



DISH WIRELESS SITE NAME:

SCE GREENLEAF

DISH WIRELESS SITE ID:

LALAX04273B

DISH WIRELESS SITE ADDRESS:

**7006 1/2 LONG BEACH BLVD.
LONG BEACH, CA 90805**

SCE TOWER # LINE NAME:

**M1-T5 LIGHTHIPE-REDONDO 220KV T/L (BUILT 1929)
TOP OF (P) DISH WIRELESS ANTENNAS- 61'-0"**

SITE INFORMATION		PROJECT DIRECTORY	
PROPERTY OWNER:	SOUTHERN CALIFORNIA EDISON	APPLICANT:	DISH WIRELESS 16812 ARMSTRONG AVENUE SUITE 200 IRVINE, CA. 92606
PROJECT ADDRESS:	7006 1/2 LONG BEACH BLVD. LONG BEACH, CA 90805	CONSTRUCTION MANAGER:	DISH WIRELESS JOHN ROGERS (909) 821-2501
PROJECT TYPE:	TOWER	RF ENGINEER:	DISH WIRELESS LORRIAN LANDICHO (209) 640-0444 lorrian.landicho@dish.com
DISH WIRELESS SITE ID:	LALAX04273B	PLANNING:	MOTIVE INFRASTRUCTURE SOLUTIONS 17260 NEWHOPE STREET FOUNTAIN VALLEY, CA. 92708 CONTACT: PATRICK GRIFFIN (714) 752-4263
COUNTY:	LOS ANGELES COUNTY	ARCHITECT:	MOTIVE INFRASTRUCTURE SOLUTIONS 17260 NEWHOPE STREET FOUNTAIN VALLEY, CA. 92708 CONTACT: MARTIN DOUBEK (714) 752-4263
LATITUDE (NAD 83):	33° 52' 52.08" N (33.881133)	SURVEYOR:	CALVADA SURVEYING, INC. 411 JENKS CIRCLE SUITE 205 CORONA, CA. 92880 CONTACT: RAMON GONZALEZ
LONGITUDE (NAD 83):	118° 12' 05.68" W (-118.201578)	POWER COMPANY:	SCE
ZONING JURISDICTION:	CITY OF LONG BEACH	FIBER COMPANY:	AT&T
ZONING DISTRICT:	PUBLIC RIGHT-OF-WAY	DISH WIRELESS CONSTRUCTION TYPE:	V
PARCEL NUMBER:	7304-001-802		
OCCUPANCY GROUP:	U		



16812 ARMSTRONG AVENUE
SUITE 200
IRVINE, CA. 92606



17260 NEWHOPE ST., FOUNTAIN VALLEY, CA 92708
PHONE: (714) 752-4263 FAX: (949) 760-3931

PROJECT DESCRIPTION

THIS IS NOT AN ALL INCLUSIVE LIST. CONTRACTOR SHALL UTILIZE SPECIFIED EQUIPMENT PART OR ENGINEER APPROVED EQUIVALENT. CONTRACTOR SHALL VERIFY ALL NEEDED EQUIPMENT TO PROVIDE A FUNCTIONAL SITE. THE PROJECT GENERALLY CONSISTS OF THE FOLLOWING:

SCOPE OF WORK:

- INSTALL (1) CMU EQUIPMENT ENCLOSURE UNDER (E) SCE TOWER.
- INSTALL (1) EQUIPMENT CABINET ON (P) CONCRETE PAD UNDER (E) SCE TOWER.
- INSTALL MISC POWER AND FIBER EQUIPMENT ON (P) GROUND MOUNTED H-FRAME.
- INSTALL (6) 6' PANEL ANTENNAS ON (E) SCE TOWER.
- INSTALL (12) RRU's ON (P) MOUNTING PIPE (EQUIPMENT WILL BE PAINTED TO MATCH).
- INSTALL (3) RAYCAP SURGE SUPPRESSORS ON (P) ANTENNA FRAME.
- INSTALL (1) GPS ANTENNA ON (P) GROUND MOUNTED H-FRAME.
- INSTALL (3) HYBRID CABLES.

CALIFORNIA - CODE COMPLIANCE

ALL WORK SHALL BE PERFORMED AND MATERIALS INSTALLED IN ACCORDANCE WITH THE CURRENT EDITIONS OF THE FOLLOWING CODES AS ADOPTED BY THE LOCAL GOVERNING AUTHORITIES. NOTHING IN THESE PLANS IS TO BE CONSTRUED TO PERMIT WORK NOT CONFORMING TO THESE CODES:

- | | |
|---------------------------------|-------------------------------------|
| 2019 CALIFORNIA ENERGY CODE | 2019 CALIFORNIA GREEN BUILDING CODE |
| 2019 CALIFORNIA BUILDING CODE | 2019 CALIFORNIA MECHANICAL CODE |
| 2019 CALIFORNIA ELECTRICAL CODE | 2019 CALIFORNIA PLUMBING CODE |
| 2019 CALIFORNIA FIRE CODE | |

SITE PHOTO



DIRECTIONS

FROM: DISH WIRELESS
16812 ARMSTRONG AVENUE
SUITE 200
IRVINE, CA. 92606

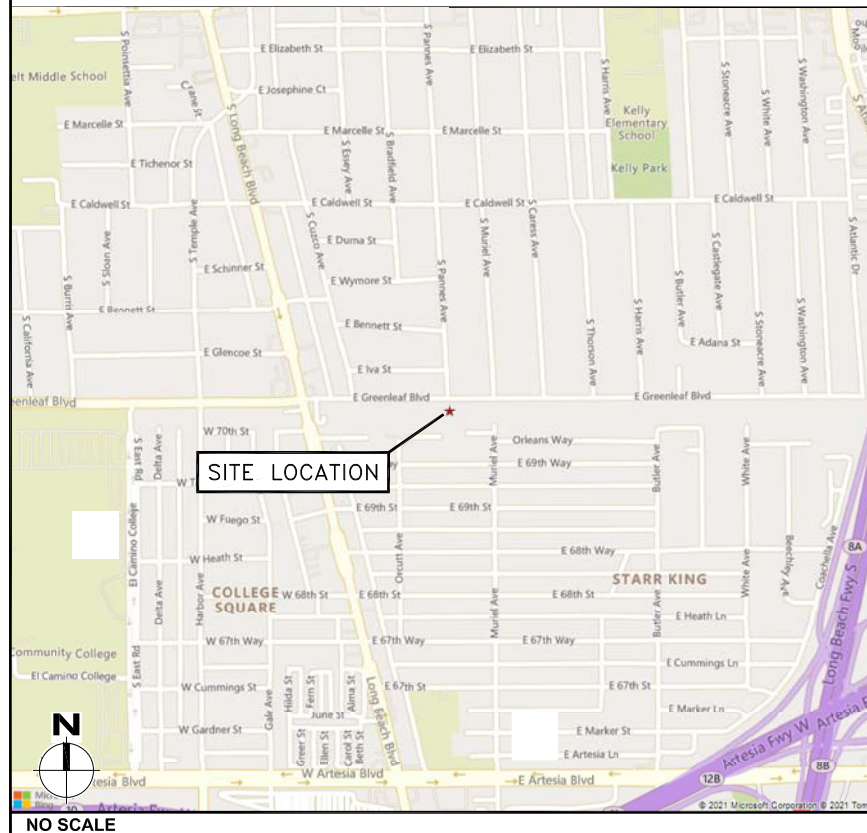


TO: 7006 1/2 LONG BEACH BLVD.
LONG BEACH, CA 90805

SHEET INDEX

SHEET NO.	SHEET TITLE
T-1	TITLE SHEET
C-1	TOPOGRAPHIC SURVEY
1A	1-A ACCURACY CERTIFICATION
A-1	SITE PLAN
A-2	PROPOSED EQUIPMENT & ANTENNA LAYOUT PLANS
A-3	PROPOSED EAST AND NORTH ELEVATIONS
A-4	PROPOSED SOUTH AND WEST ELEVATIONS

VICINITY MAP



IT IS A VIOLATION OF LAW FOR ANY PERSON, UNLESS THEY ARE ACTING UNDER THE DIRECTION OF A LICENSED PROFESSIONAL ENGINEER, TO ALTER THIS DOCUMENT.

DRAWN BY:	CHECKED BY:	APPROVED BY:
NP/MW	MBD	MBD

RFDS REV #: 1 ISSUED: 08/25/2021

ZONING DRAWINGS

REV	DATE	DESCRIPTION
A	09/10/2021	90% ZD'S
0	11/30/2021	100% ZD'S
1	10/06/2022	ADDITIONAL DRM COMMENTS

A&E PROJECT NUMBER
11700160

DISH WIRELESS PROJECT INFORMATION
LALAX04273B
7006 1/2 LONG BEACH BLVD.
LONG BEACH, CA 90805

SHEET TITLE
TITLE SHEET

SHEET NUMBER
T-1

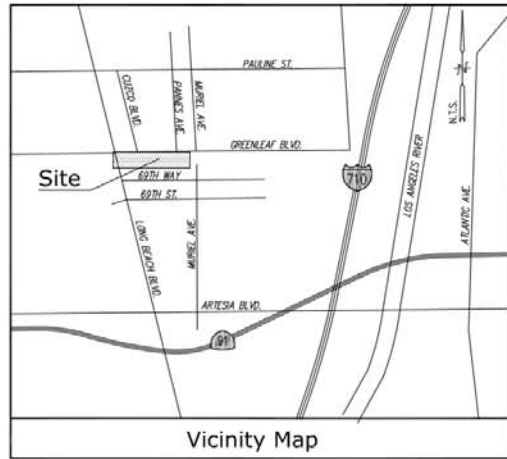
UNDERGROUND SERVICE ALERT
UTILITY NOTIFICATION CENTER OF CALIFORNIA
(800) 422-4133
WWW.CALIFORNIA811.ORG
CALL 2-14 WORKING DAYS UTILITY NOTIFICATION PRIOR TO CONSTRUCTION



GENERAL NOTES
THE FACILITY IS UNMANNED AND NOT FOR HUMAN HABITATION. A TECHNICIAN WILL VISIT THE SITE AS REQUIRED FOR ROUTINE MAINTENANCE. THE PROJECT WILL NOT RESULT IN ANY SIGNIFICANT DISTURBANCE OR EFFECT ON DRAINAGE. NO SANITARY SEWER SERVICE, POTABLE WATER, OR TRASH DISPOSAL IS REQUIRED AND NO COMMERCIAL SIGNAGE IS PROPOSED.

11"x17" PLOT WILL BE HALF SCALE UNLESS OTHERWISE NOTED

CONTRACTOR SHALL VERIFY ALL PLANS, EXISTING DIMENSIONS, AND CONDITIONS ON THE JOB SITE, AND SHALL IMMEDIATELY NOTIFY THE ENGINEER IN WRITING OF ANY DISCREPANCIES BEFORE PROCEEDING WITH THE WORK.



Title Report

PREPARED BY: COMMONWEALTH LAND TITLE COMPANY
 ORDER NO.: 92018453
 DATED: JULY 6, 2022

Legal Description

ALL THAT CERTAIN REAL PROPERTY SITUATED IN THE COUNTY OF LOS ANGELES, STATE OF CALIFORNIA, DESCRIBED AS FOLLOWS:
 THAT PORTION OF RANCHO SAN PEDRO, IN THE CITY OF LONG BEACH, COUNTY OF LOS ANGELES, STATE OF CALIFORNIA, SHOWN AS ASSESSORS PARCEL NUMBER 7304-001-802.

Assessor's Parcel Nos.

7304-001-802 & 7304-001-803

Easements

1. - EASEMENT FOR UNDERGROUND 72-INCH INSIDE DIAMETER PIPE LINE AND APPURTENANT STRUCTURES, INCLUDING MANHOLES EXTENDING NO MORE THAN TWELVE (12) INCHES ABOVEGROUND, FOR THE TRANSPORTATION OF WATER RECORDED JUNE 18, 1953 AS DOCUMENT NO. 11452-11 AND JULY 3, 1953 AS INSTRUMENT NO. 3855 OF OFFICIAL RECORDS (NOT PLOTTED, EXACT LOCATION AND EXTENT NOT DISCLOSED PER REQUIRE).

Access & Utility Routes/Lease Area/Proposed Parking Stall

AS SHOWN

Geographic Coordinates at Existing Tower

1983 DATUM: LATITUDE 33° 52' 52.08"N LONGITUDE 118° 12' 05.68"W
 ELEVATION = 82.2 FEET ABOVE MEAN SEA LEVEL

CERTIFICATION:
 THE LATITUDE AND LONGITUDE SHOWN ABOVE ARE ACCURATE TO WITHIN +/- 15 FEET HORIZONTALLY AND THAT THE ELEVATIONS SHOWN ABOVE ARE ACCURATE TO WITHIN +/- 3 FEET VERTICALLY. THE HORIZONTAL DATUM (GEOGRAPHIC COORDINATES) IS IN TERMS OF THE NORTH AMERICAN DATUM OF 1983 (NAD 83) AND IS EXPRESSED IN DEGREES (°), MINUTES (') AND SECONDS ("). TO THE NEAREST HUNDRETH OF A SECOND. THE VERTICAL DATUM (ELEVATIONS) IS IN TERMS OF THE NORTH AMERICAN VERTICAL DATUM OF 1988 (NAVD 88) AND IS DETERMINED TO THE NEAREST TENTH OF A FOOT.

Basis of Bearings

THE BEARINGS SHOWN HEREON ARE BASED UPON THE CALIFORNIA COORDINATE SYSTEM OF 1983, CC583, ZONE 5, (2020.00) IN ACCORDANCE TO THE CALIFORNIA PUBLIC RESOURCES CODE SECTIONS 8801-8819. SAID BEARINGS ARE DETERMINED LOCALLY UPON FIELD-OBSERVED TIES TO THE FOLLOWING LEICA SMARTNET NORTH AMERICA REFERENCE NETWORK STATIONS (C.O.R.S.):

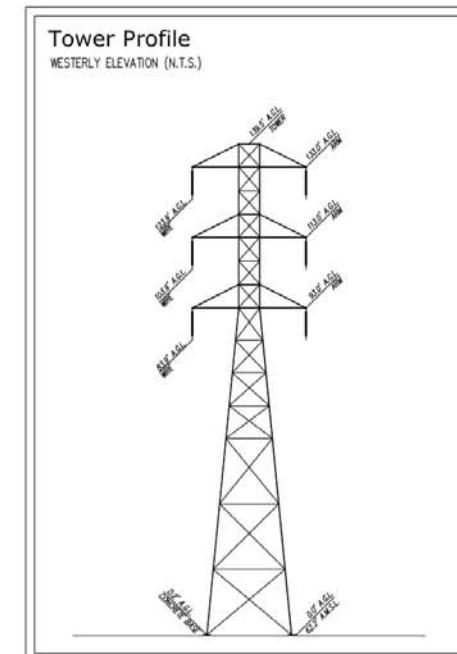
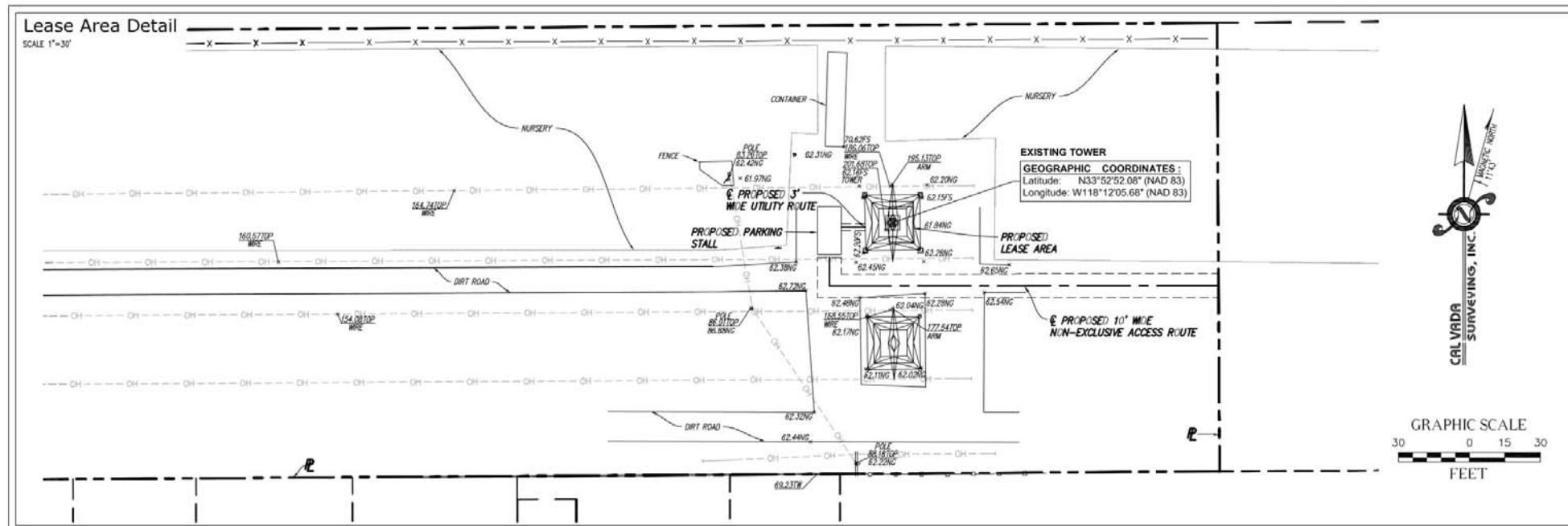
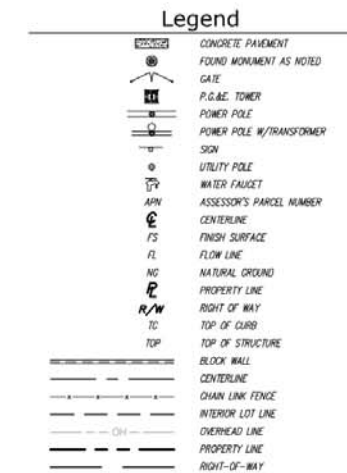
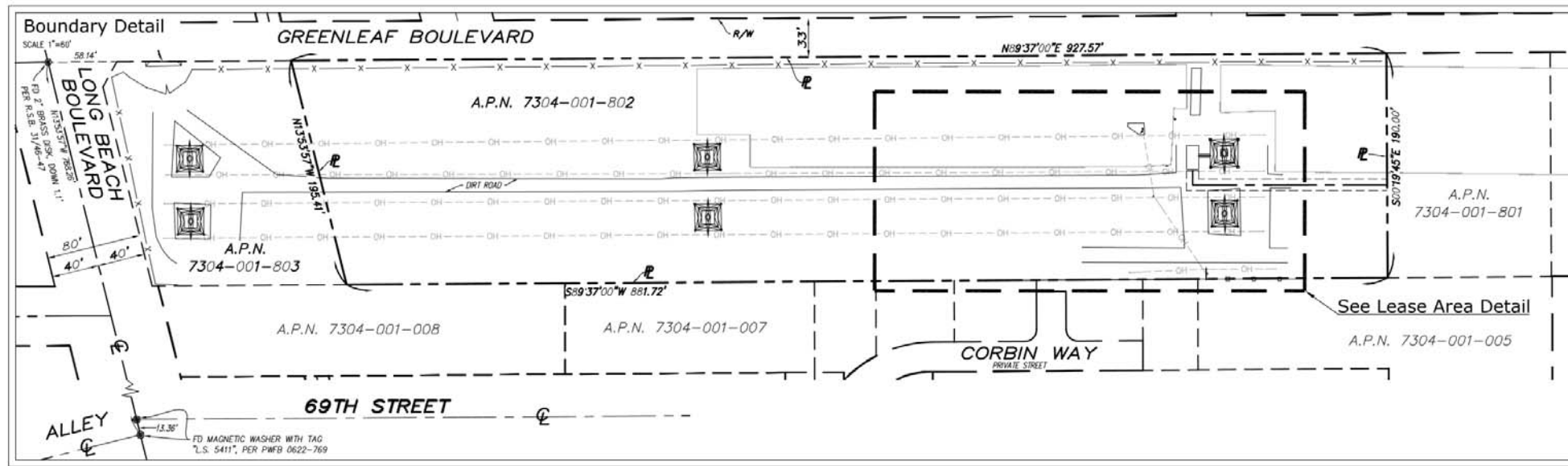
S.N.A. CASP: NORTHING = 1800797.41' EASTING = 6537292.73'
 S.N.A. CAPE: NORTHING = 1730270.25' EASTING = 6476524.37'

Benchmark

THE SMARTNET NORTH AMERICA C.O.R.S. CASP, ELEVATION 157.94 FEET (NAVD 88).

Date of Survey

AUGUST 24, 2021.



17250 NEWHOPE STREET, FOUNTAIN VALLEY, CA 926708

PROPRIETARY INFORMATION

THE INFORMATION CONTAINED IN THIS SET OF CONSTRUCTION DOCUMENTS IS PROPRIETARY BY NATURE. ANY USE OR DISCLOSURE OTHER THAN THAT WHICH RELATES TO DISH IS STRICTLY PROHIBITED.

CONSULTANT CALVADA SURVEYING, INC.

411 Jenks Cr., Suite 205, Corona, CA 92880
 Phone: 951-280-9990 Fax: 951-280-8748
 Toll Free: 800-CALVADA www.calvada.com
 JOB NO. 21812



PREPARED FOR



APPROVALS

R.F.	DATE
SAC AND ZONING	DATE
CM	DATE
CM	DATE
OWNER APPROVAL	DATE

PROJECT SITE

LALAX04273B

SCE ROW LOCATED S/O GREENLEAF BLVD.
 AND E/O N. LONG BEACH BLVD.
 LONG BEACH, CA 90805
 LOS ANGELES COUNTY

DATE	DESCRIPTION	BY
09/02/21	SUBMITTAL	VF
11/23/21	ZONING DRAWINGS/FINAL	HP
08/30/22	TITLE REPORT/FINAL	HP

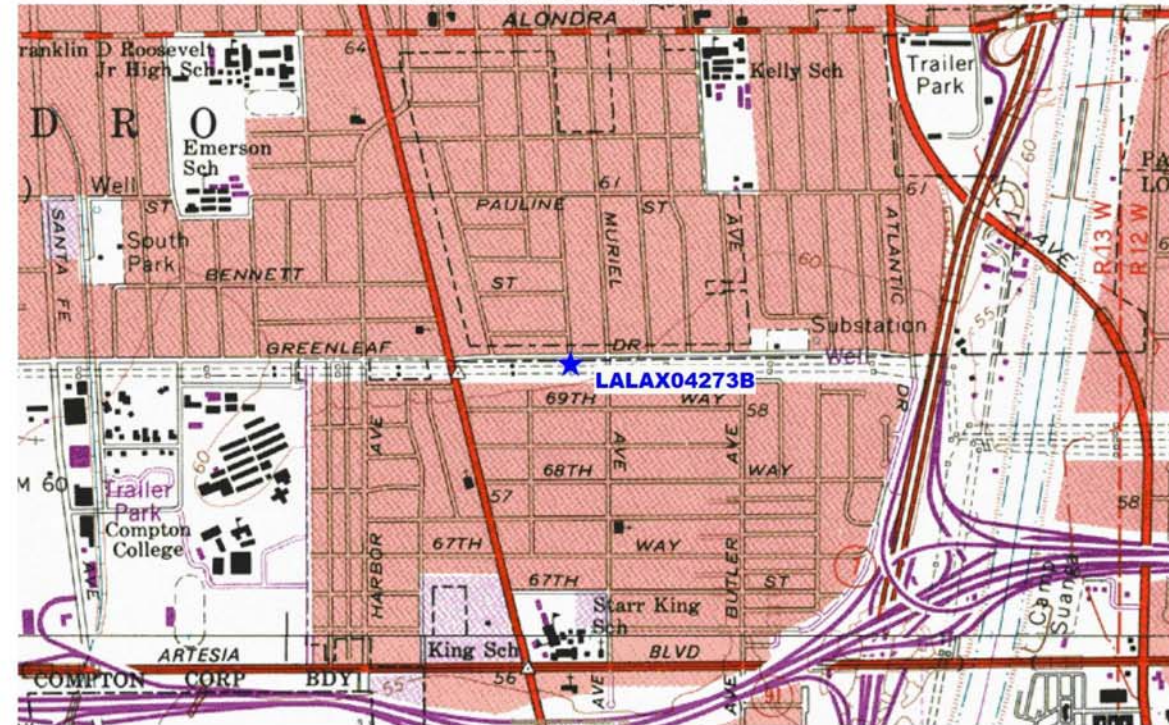
SHEET TITLE

TOPOGRAPHIC SURVEY

C-1

SHEET 1 OF 1

1-A ACCURACY CERTIFICATION



**Geographic Coordinates at Existing Tower
(NAD 83)**

LATITUDE: 33° 52' 52.08" N (33.881133 DD)
LONGITUDE: 118° 12' 05.68" W (-118.201578 DD)

Elevations (NAVD 88)

Ground Elevation at Existing Tower 62.2 Feet A.M.S.L. (± 62' - 2")
Top of Existing Tower 139.5 Feet A.G.L. (± 139' - 6")
Overall Height: Top of Existing Tower 139.5 Feet A.G.L. (± 139' - 6")

Site Name: LALAX04273B
Site Address: SCE ROW located S/O Greenleaf Blvd.
and E/O N. Long Beach Blvd., Long Beach, CA 90805
Los Angeles County
Survey Date: August 24, 2021
Data Source: The Smartnet North America C.O.R.S. "CASF"



I hereby certify that the **latitude** and **longitude** shown above are accurate to within +/- 20 feet horizontally and that the **elevation** shown above are accurate to within +/- 3 feet vertically. The horizontal datum (Geographic Coordinates) is in terms of the North American Datum of 1983 (NAD 83) and is expressed in degrees (°), minutes (') and seconds ("), to the nearest hundredth of a second. The vertical datum (Elevations) is in terms of the North American Vertical Datum of 1988 (NAVD 88) and is determined to the nearest tenth of a foot.

Note: DD indicates Decimal Degrees.

IT IS A VIOLATION OF LAW FOR ANY PERSON,
UNLESS THEY ARE ACTING UNDER THE DIRECTION
OF A LICENSED PROFESSIONAL ENGINEER,
TO ALTER THIS DOCUMENT.

DRAWN BY:	CHECKED BY:	APPROVED BY:
NP/MW	MBD	MBD

RFDS REV #: 1 ISSUED: 08/25/2021

**ZONING
DRAWINGS**

SUBMITTALS		
REV	DATE	DESCRIPTION
A	09/10/2021	90% ZD'S
0	11/30/2021	100% ZD'S
1	10/06/2022	ADDITIONAL DRM COMMENTS

A&E PROJECT NUMBER
11700160

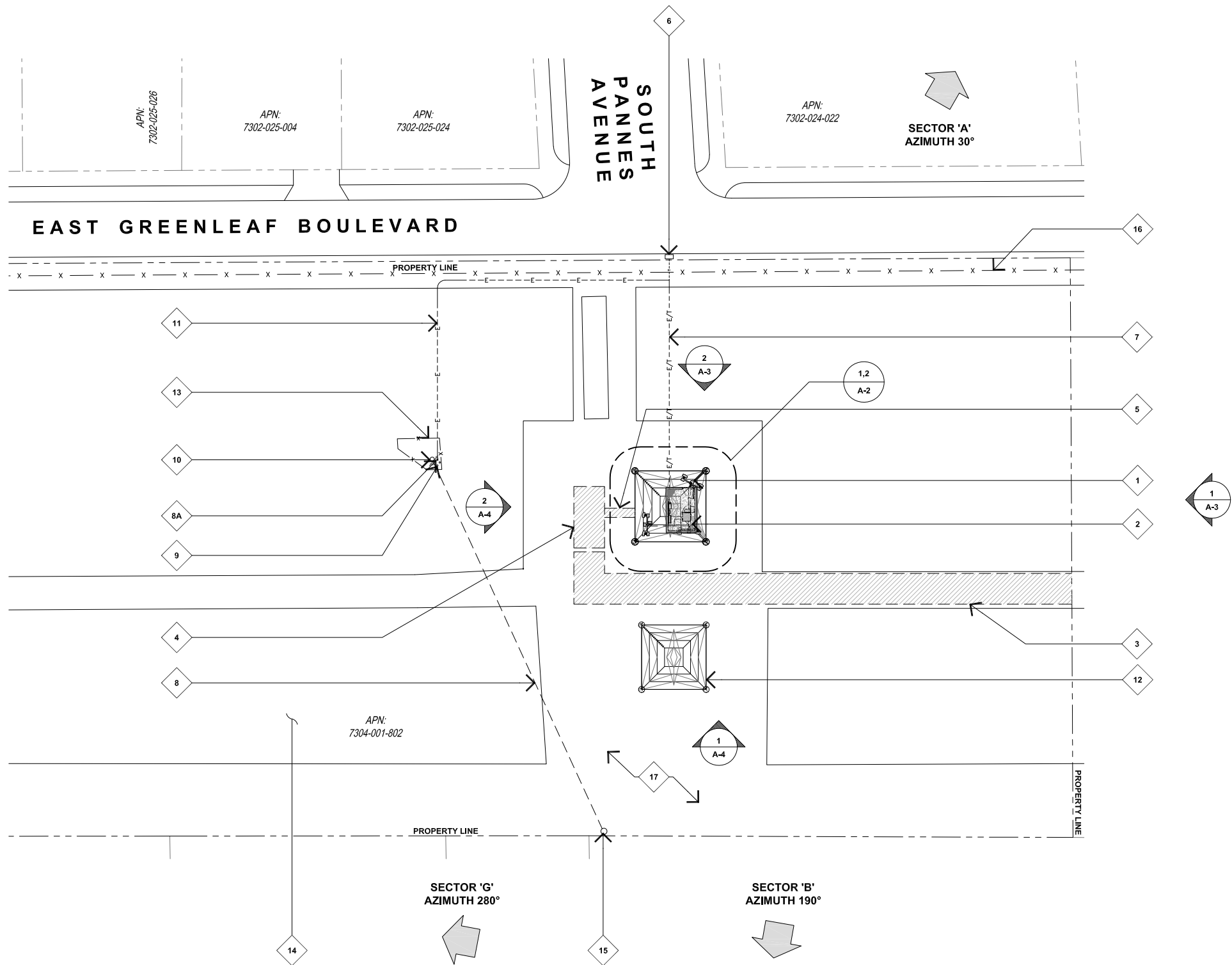
DISH WIRELESS PROJECT INFORMATION
LALAX04273B
7006 1/2 LONG BEACH BLVD.
LONG BEACH, CA 90805

SHEET TITLE
**1-A ACCURACY
CERTIFICATION**

SHEET NUMBER
1-A

KEYNOTES

- 1 (P) DISH WIRELESS PANEL ANTENNA, RRU AND RAYCAP MOUNTED ON (E) SCE TOWER, TYP., SEE A-2.
- 2 (P) DISH WIRELESS 10'-0"X15'-0" EQUIPMENT LEASE AREA UNDER (E) SCE TOWER, SEE A-2.
- 3 (P) 10' WIDE VEHICULAR ACCESS PATH TO A NON-EXCLUSIVE PARKING SPACE.
- 4 (P) NON-EXCLUSIVE PARKING SPACE.
- 5 (P) PEDESTRIAN ACCESS PATH TO A (P) DISH WIRELESS LEASE AREA.
- 6 (P) DISH WIRELESS FIBER MMP HAND HOLE LOCATED IN (E) RIGHT OF WAY.
- 7 (P) DISH WIRELESS POWER AND FIBER CONDUITS ROUTED IN JOINT TRENCH.
- 8 (P) AERIAL POWER DROP TO (E) WOOD POLE.
- 8A (P) DISH WIRELESS METER ON (P) H-FRAME NEAR EXISTING METER.
- 9 (P) PROTECTIVE BOLLARDS, TYP. OF (2).
- 10 (E) WOOD DROP POLE.
- 11 (P) DISH WIRELESS UNDERGROUND POWER CONDUIT ROUTED FROM (P) METER TO (P) DISH WIRELESS LEASE AREA. (232'-0")
- 12 (E) SCE TOWER, TYP.
- 13 (E) CHAIN LINK FENCE ENCLOSURE.
- 14 (E) PLANT MATERIALS IN CONTAINERS.
- 15 (E) UTILITY POLE, (P) P.O.C FOR DISH WIRELESS POWER SERVICE.
- 16 (E) BOUNDARY CHAIN LINK FENCE.
- 17 (E) RAW LAND.



16812 ARMSTRONG AVENUE
SUITE 200
IRVINE, CA, 92606



17260 NEWHOPE ST., FOUNTAIN VALLEY, CA 92708
PHONE: (714) 752-4263 FAX: (949) 760-3931

IT IS A VIOLATION OF LAW FOR ANY PERSON, UNLESS THEY ARE ACTING UNDER THE DIRECTION OF A LICENSED PROFESSIONAL ENGINEER, TO ALTER THIS DOCUMENT.

DRAWN BY:	CHECKED BY:	APPROVED BY:
NP/MW	MBD	MBD

RFDS REV #: 1 ISSUED: 08/25/2021

ZONING DRAWINGS

SUBMITTALS		
REV	DATE	DESCRIPTION
A	09/10/2021	90% ZD'S
0	11/30/2021	100% ZD'S
1	10/06/2022	ADDITIONAL DRM COMMENTS

A&E PROJECT NUMBER
11700160

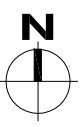
DISH WIRELESS PROJECT INFORMATION
LALAX04273B
7006 1/2 LONG BEACH BLVD.
LONG BEACH, CA 90805

SHEET TITLE
SITE PLAN

SHEET NUMBER
A-1

SITE PLAN

11X17 SCALE: 1"=40'
24X36 SCALE: 1"=20'

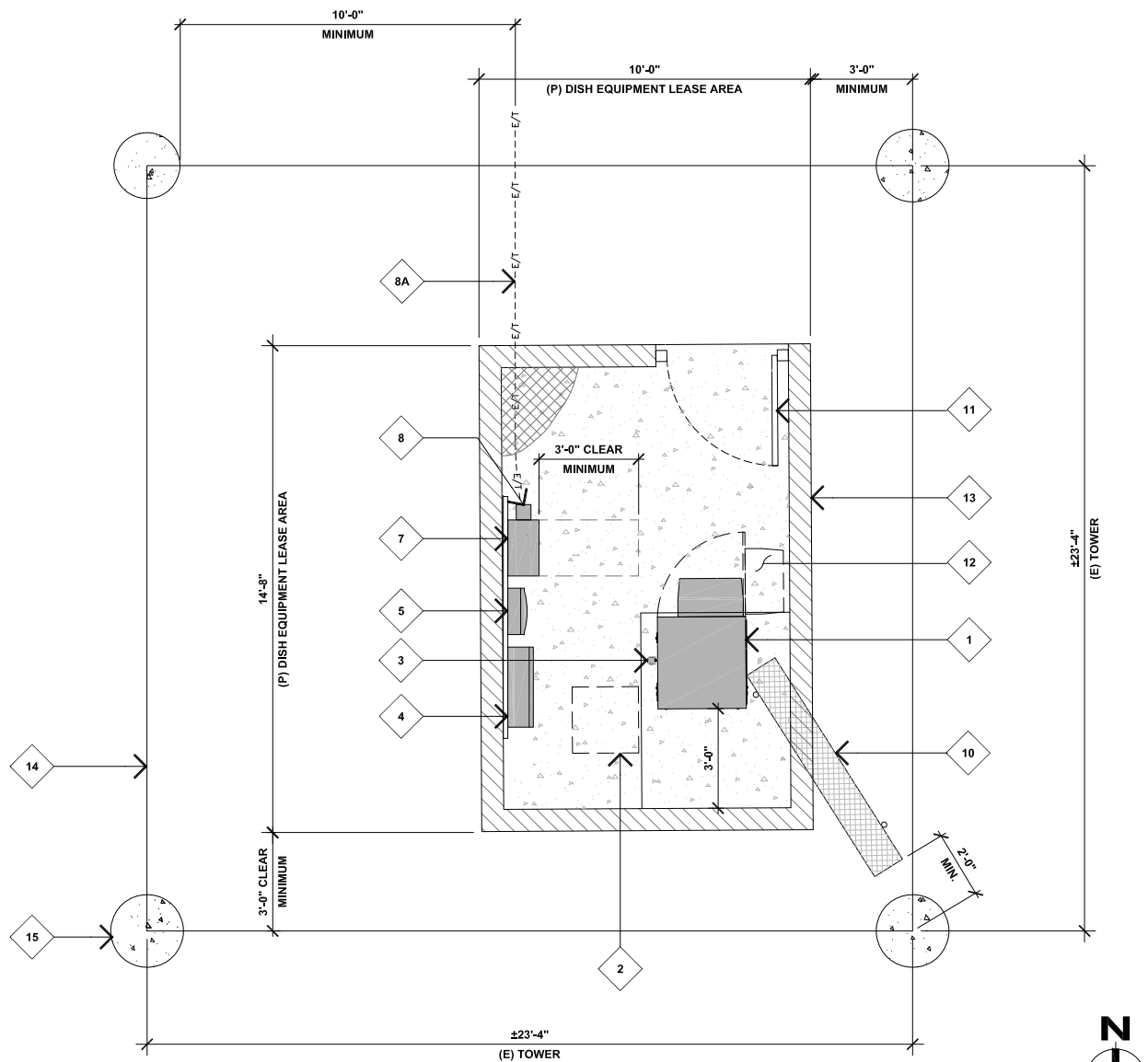


1

KEYNOTES

- 1 (P) DISH WIRELESS EQUIPMENT CABINET ON (P) HOUSEKEEPING PAD.
- 2 (P) DISH WIRELESS STEP DOWN TRANSFORMER (IF REQUIRED).
- 3 (N) DISH WIRELESS GPS ANTENNA MOUNTED ON (N) EQUIPMENT CABINET.
- 4 (P) DISH WIRELESS FIBER ENCLOSURE MOUNTED ON (P) H-FRAME.
- 5 (P) DISH WIRELESS CIENA BOX MOUNTED ON (P) H-FRAME.
- 6 NOT USED.
- 7 (P) DISH WIRELESS POWER PROTECTIVE CABINET MOUNTED ON (P) H-FRAME.
- 8 (P) DISH WIRELESS GEN PLUG.
- 8A (P) DISH WIRELESS UNDERGROUND UTILITY CONDUITS.
- 9 NOT USED.
- 10 (P) CABLE ICE BRIDGE FROM EQUIPMENT CABINET TO (E) RISER LEG. (P) ICE BRIDGE TO BE 8'-0" AGL AND 24" MINIMUM FROM TOWER STEEL.
- 11 (N) 4'-0" WIDE SINGLE SWING SOLID METAL ACCESS GATE WITH LOCK.
- 12 (P) DISH WIRELESS 7'-0" x 8'-0" CONCRETE PAD.
- 13 (N) 8'-0" HIGH CMU WALL ENCLOSURE WITH SECURITY LID. WALL TO BE MINIMUM OF 24" CLEAR FROM EXISTING TOWER STEEL.
- 14 (E) TOWER FRAMING.
- 15 (E) CONCRETE TOWER CAISSON, TYP. OF (4).

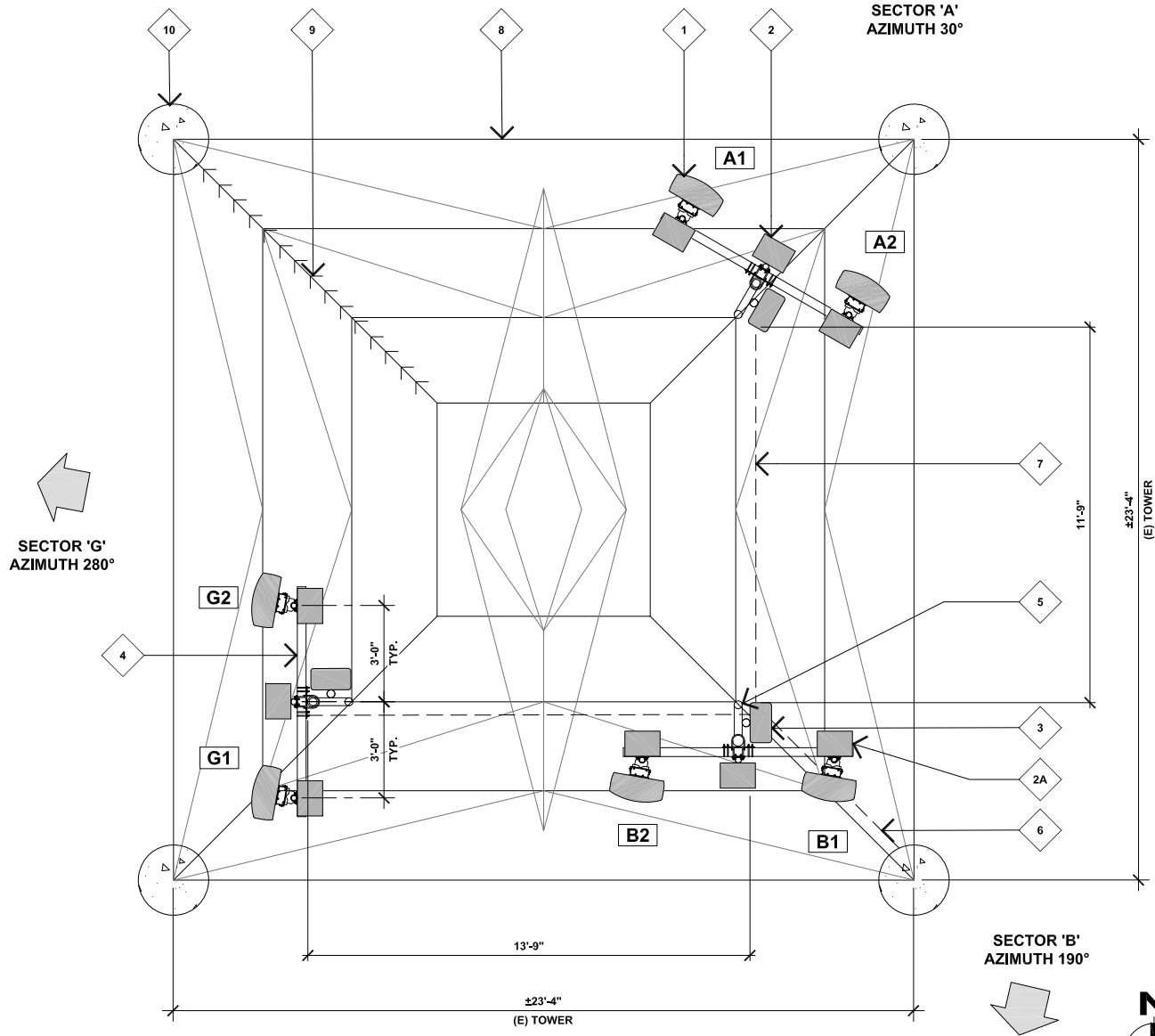
NOTE:
(P) FENCING AND ICE BRIDGE TO BE A MINIMUM OF 24" FROM EXISTING TOWER STEEL.
ALL UNDERGROUND CONDUITS TO BE A MINIMUM OF 10'-0" CLEAR FROM EXISTING TOWER CAISSONS.



KEYNOTES

- 1 (P) DISH WIRELESS 6FT PANEL ANTENNAS, TYP. (2) PER SECTOR, (6) TOTAL MOUNTED ON (P) ANTENNA MOUNTING PIPE.
- 2 (P) DISH WIRELESS RRUs ON MIDDLE MOUNTING PIPE, TYP. OF (2) STACKED, TYP. AT EACH SECTOR.
- 2A (P) DISH WIRELESS RRUs BEHIND (P) ANTENNAS, TYP. (1) PER ANTENNA AT EACH SECTOR.
- 3 (P) DISH WIRELESS RAYCAP SURGE SUPPRESSOR MOUNTED ON (P) VERTICAL MOUNTING PIPE, TYP. (1) PER SECTOR, (3) TOTAL.
- 4 (P) DISH WIRELESS ANTENNA MOUNTING FRAME, TYP.
- 5 (P) VERTICAL MOUNTING PIPE PROVIDED BY SCE, TYP.
- 6 (P) DISH WIRELESS HYPERFLEX CABLES ROUTED UP (E) RISER LEG TO ANTENNAS ABOVE.
- 7 (P) DISH WIRELESS HYPERFLEX ROUTED ON HORIZONTAL TOWER MEMBERS TO (P) ANTENNA SECTORS, TYP.
- 8 (E) SCE TOWER FRAMING.
- 9 (E) TOWER CLIMBING LEG.
- 10 (E) CONCRETE TOWER CAISSON BELOW, TYP.

NOTE:
(P) DISH WIRELESS ANTENNA ARRAY TO BE 12" CLEAR FROM EXISTING TOWER STEEL.



SECTOR	POSITION	ANTENNA SCHEDULE		TRANSMISSION CABLE
		AZIMUTH	RAD CENTER	
ALPHA	A1	30°	58'-0"	(1) HYBRID CABLE
	A2			
BETA	B1	190°	58'-0"	(1) HYBRID CABLE
	B2			
GAMMA	G1	280°	58'-0"	(1) HYBRID CABLE
	G2			



16812 ARMSTRONG AVENUE
SUITE 200
IRVINE, CA, 92606



17260 NEWHOPE ST., FOUNTAIN VALLEY, CA 92708
PHONE: (714) 752-4263 FAX: (949) 760-3931

IT IS A VIOLATION OF LAW FOR ANY PERSON, UNLESS THEY ARE ACTING UNDER THE DIRECTION OF A LICENSED PROFESSIONAL ENGINEER, TO ALTER THIS DOCUMENT.

DRAWN BY:	CHECKED BY:	APPROVED BY:
NP/MW	MBD	MBD

RFDS REV #: 1 ISSUED: 08/25/2021

ZONING DRAWINGS

SUBMITTALS		
REV	DATE	DESCRIPTION
A	09/10/2021	90% ZD'S
0	11/30/2021	100% ZD'S
1	10/06/2022	ADDITIONAL DRM COMMENTS

A&E PROJECT NUMBER
11700160

DISH WIRELESS PROJECT INFORMATION
LALAX04273B
7006 1/2 LONG BEACH BLVD.
LONG BEACH, CA 90805

SHEET TITLE
PROPOSED ANTENNA AND EQUIPMENT LAYOUT PLANS

SHEET NUMBER
A-2

PROPOSED EQUIPMENT LAYOUT PLAN

11x17 SCALE: 3/16"=1'-0"
24x36 SCALE: 3/8"=1'-0"
0 1' 2' 3' 6'

2

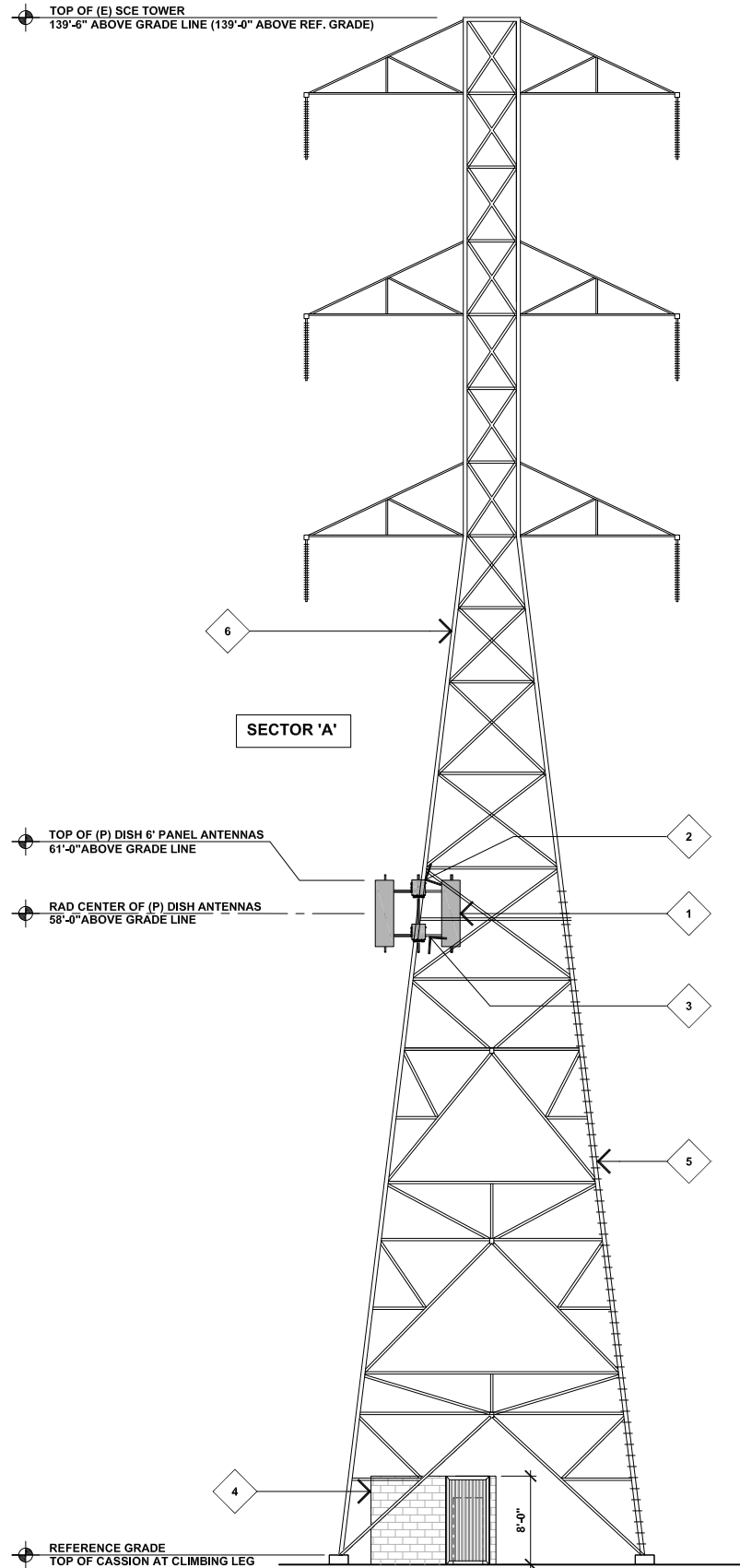
PROPOSED ANTENNA LAYOUT PLAN

11x17 SCALE: 3/16"=1'-0"
24x36 SCALE: 3/8"=1'-0"
0 1' 2' 3' 6'

1

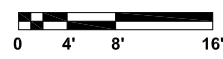
KEYNOTES

- 1 (P) DISH WIRELESS 6' PANEL ANTENNAS, TYP. (2) PER SECTOR.
- 2 (P) DISH WIRELESS RRU's, TYP. (4) PER SECTOR. (RRU'S MOUNTED BEHIND (P) ANTENNAS NOT VISIBLE IN THIS VIEW).
- 3 (P) DISH WIRELESS ANTENNA MOUNTING FRAME.
- 4 (N) 8'-0" HIGH CMU WALL ENCLOSURE WITH SECURITY LID, WALL TO BE MINIMUM OF 24" CLEAR FROM EXISTING TOWER STEEL.
- 5 (E) TOWER CLIMBING LEG.
- 6 (E) SCE TOWER.



PROPOSED NORTH ELEVATION

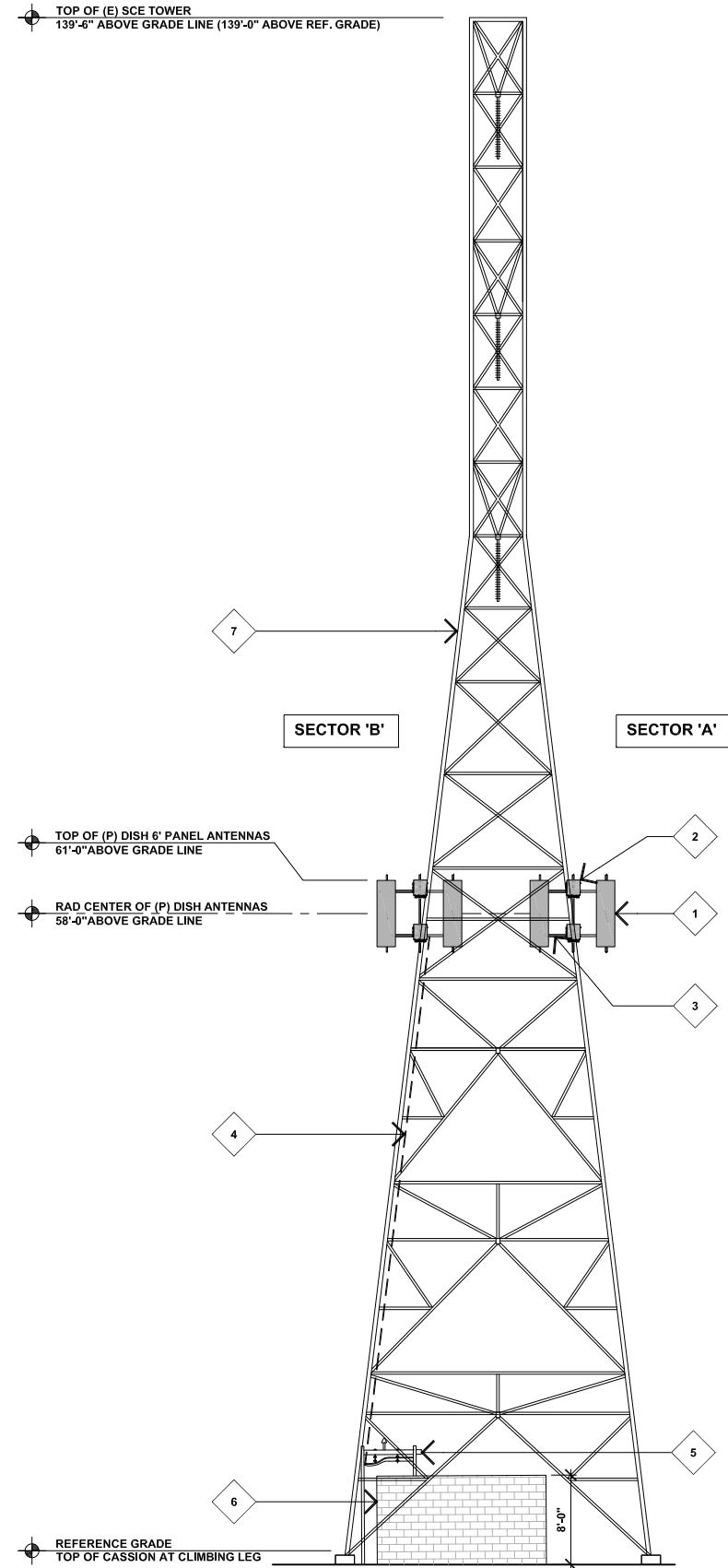
11x17 SCALE: 1/16"=1'-0"
24x36 SCALE: 1/8"=1'-0"



2

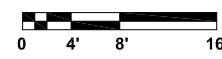
KEYNOTES

- 1 (P) DISH WIRELESS 6' PANEL ANTENNAS, TYP. (2) PER SECTOR.
- 2 (P) DISH WIRELESS RRU's, TYP. (4) PER SECTOR. (RRU'S MOUNTED BEHIND (P) ANTENNAS NOT VISIBLE IN THIS VIEW).
- 3 (P) DISH WIRELESS ANTENNA MOUNTING FRAME.
- 4 (P) DISH WIRELESS HYPERFLEX CABLES ROUTED UP (E) RISER LEG TO (P) ANTENNAS ABOVE.
- 5 (P) CABLE ICE BRIDGE FROM EQUIPMENT CABINET TO (E) RISER LEG. (P) ICE BRIDGE TO BE 8'-0" AGL AND 24" FROM TOWER STEEL, MINIMUM.
- 6 (N) 8'-0" HIGH CMU WALL ENCLOSURE WITH SECURITY LID, WALL TO BE MINIMUM OF 24" CLEAR FROM EXISTING TOWER STEEL.
- 7 (E) SCE TOWER.



PROPOSED EAST ELEVATION

11x17 SCALE: 1/16"=1'-0"
24x36 SCALE: 1/8"=1'-0"



1



16812 ARMSTRONG AVENUE
SUITE 200
IRVINE, CA. 92606



17260 NEMHOPE ST., FOUNTAIN VALLEY, CA 92708
PHONE: (714) 752-4263 FAX: (949) 760-3931

IT IS A VIOLATION OF LAW FOR ANY PERSON, UNLESS THEY ARE ACTING UNDER THE DIRECTION OF A LICENSED PROFESSIONAL ENGINEER, TO ALTER THIS DOCUMENT.

DRAWN BY:	CHECKED BY:	APPROVED BY:
NP/MW	MBD	MBD

RFDS REV #: 1 ISSUED: 08/25/2021

ZONING DRAWINGS

SUBMITTALS		
REV	DATE	DESCRIPTION
A	09/10/2021	90% ZD'S
0	11/30/2021	100% ZD'S
1	10/06/2022	ADDITIONAL DRM COMMENTS

A&E PROJECT NUMBER
11700160

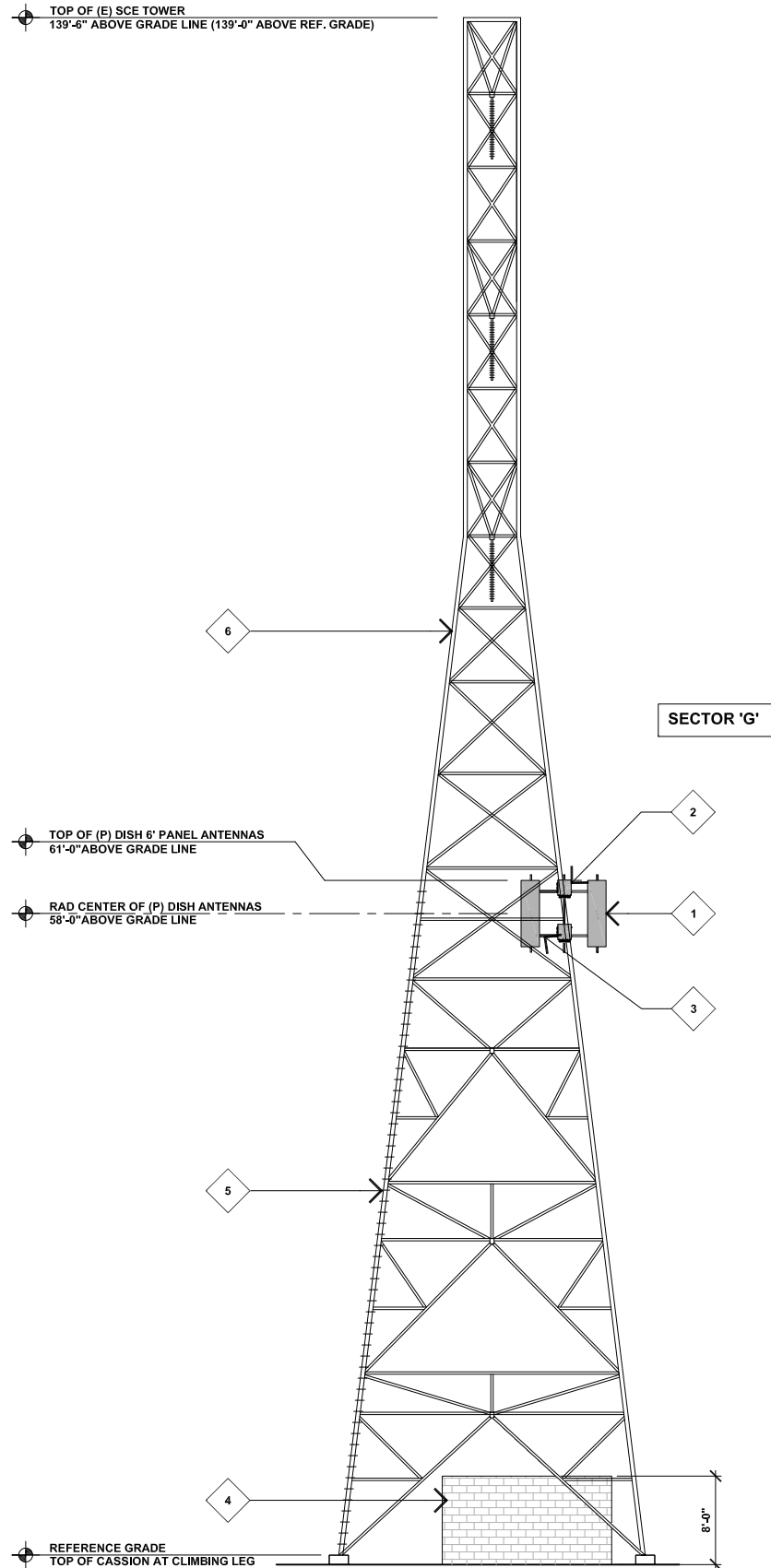
DISH WIRELESS PROJECT INFORMATION
LALAX04273B
7006 1/2 LONG BEACH BLVD.
LONG BEACH, CA 90805

SHEET TITLE
PROPOSED EAST AND NORTH ELEVATIONS

SHEET NUMBER
A-3

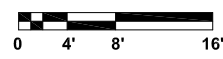
KEYNOTES

- 1 (P) DISH WIRELESS 6' PANEL ANTENNAS, TYP. (2) PER SECTOR.
- 2 (P) DISH WIRELESS RRU's, TYP. (4) PER SECTOR. (RRU'S MOUNTED BEHIND (P) ANTENNAS NOT VISIBLE IN THIS VIEW).
- 3 (P) DISH WIRELESS ANTENNA MOUNTING FRAME.
- 4 (N) 8'-0" HIGH CMU WALL ENCLOSURE WITH SECURITY LID. WALL TO BE MINIMUM OF 24" CLEAR FROM EXISTING TOWER STEEL.
- 5 (E) TOWER CLIMBING LEG.
- 6 (E) SCE TOWER.



PROPOSED WEST ELEVATION

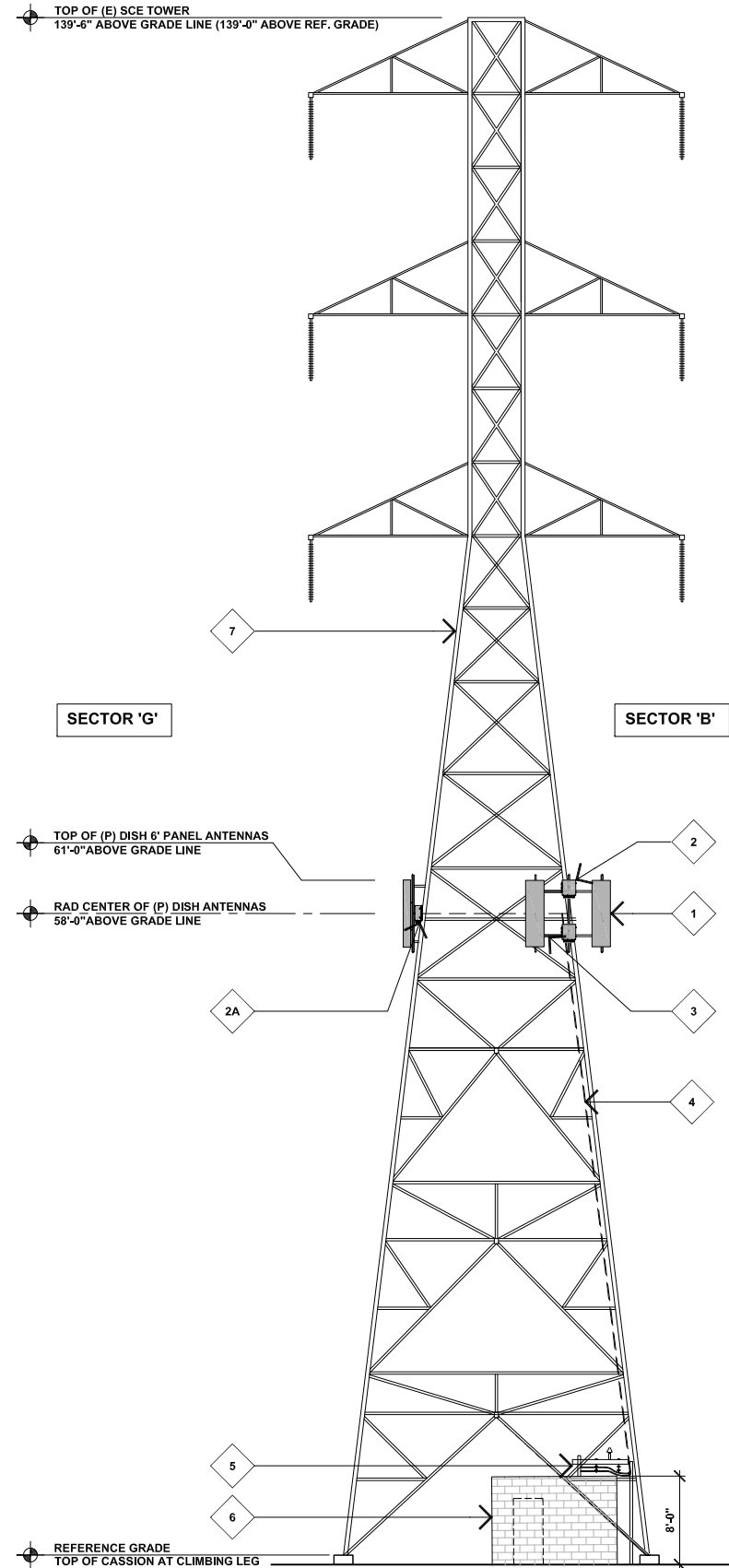
11x17 SCALE: 1/16"=1'-0"
24x36 SCALE: 1/8"=1'-0"



2

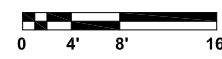
KEYNOTES

- 1 (P) DISH WIRELESS 6' PANEL ANTENNAS, TYP. (2) PER SECTOR.
- 2 (P) DISH WIRELESS RRU'S ON MIDDLE MOUNTING PIPE, TYP. OF (2).
- 2A (P) DISH WIRELESS RRU MOUNTED BEHIND (P) ANTENNA.
- 3 (P) DISH WIRELESS ANTENNA MOUNTING FRAME.
- 4 (P) DISH WIRELESS HYPERFLEX CABLES ROUTED UP (E) RISER LEG TO (P) ANTENNAS ABOVE.
- 5 (P) CABLE ICE BRIDGE FROM EQUIPMENT CABINET TO (E) RISER LEG. (P) ICE BRIDGE TO BE 8'-0" AGL AND 24" FROM TOWER STEEL, MINIMUM.
- 6 (N) 8'-0" HIGH CMU WALL ENCLOSURE WITH SECURITY LID. WALL TO BE MINIMUM OF 24" CLEAR FROM EXISTING TOWER STEEL.
- 7 (E) SCE TOWER.



PROPOSED SOUTH ELEVATION

11x17 SCALE: 1/16"=1'-0"
24x36 SCALE: 1/8"=1'-0"



1



16812 ARMSTRONG AVENUE
SUITE 200
IRVINE, CA, 92606



17260 NEWHOPE ST., FOUNTAIN VALLEY, CA 92708
PHONE: (714) 752-4263 FAX: (949) 760-3931

IT IS A VIOLATION OF LAW FOR ANY PERSON, UNLESS THEY ARE ACTING UNDER THE DIRECTION OF A LICENSED PROFESSIONAL ENGINEER, TO ALTER THIS DOCUMENT.

DRAWN BY:	CHECKED BY:	APPROVED BY:
NP/MW	MBD	MBD

RFDS REV #: 1 ISSUED: 08/25/2021

ZONING DRAWINGS

SUBMITTALS		
REV	DATE	DESCRIPTION
A	09/10/2021	90% ZD'S
0	11/30/2021	100% ZD'S
1	10/06/2022	ADDITIONAL DRM COMMENTS

A&E PROJECT NUMBER
11700160

DISH WIRELESS PROJECT INFORMATION
LALAX04273B
7006 1/2 LONG BEACH BLVD.
LONG BEACH, CA 90805

SHEET TITLE
PROPOSED SOUTH AND WEST ELEVATIONS

SHEET NUMBER
A-4