

## Airport Advisory Commission

**Phyllis Ortman**  
Chair

**Roland B. Scott, Jr.**  
Vice Chair

**Elizabeth Cruz**

**Hal Gosling**

**Bob Luskin**

**Gerald Mineghino**

**Karen Sherman**

**Carol Soccio**

## Airport Management

**Mario Rodriguez**  
Airport Director

**Ken Mason**  
Executive Assistant

**Carolyn Carlton-Lowe**  
Operations & Facilities  
Bureau Manager

**JC Squires**  
Manager, Finance  
& Administration

**Claudia Lewis**  
Administrative Officer

**Fred Pena**  
Facilities Management Officer  
Airside Operations Superintendent

**Mario Fabila**  
Noise Compliance &  
Environmental Affairs Officer

**John Blood**  
Chief of Security

**Kerry Gerot**  
Public Affairs Officer



**LONG BEACH  
AIRPORT**

Building a Better Way to Fly



# Long Beach Airport Monthly Noise Report January 2012

**COMMERCIAL AIRCRAFT LATE NIGHT ACTIVITY**  
**LGB Current Month & Calendar Year-To-Date Statistics (10 PM- 7AM)**  
**January 2012**

				<b>January</b>			<b>CY-T-D 2012</b>		
<b>10PM - 11PM Activity</b>	<b>2012</b>	<b>2011</b>	<b>Change</b>	<b>2012</b>	<b>2011</b>	<b>Change</b>	<b>2012</b>	<b>2011</b>	<b>Change</b>
(									
<b>Air Carrier &amp; Commuter Operations</b>									
Alaska / Horizon	0	0		0	0		0	0	
Allegiant	0	1		0	1		0	1	
Delta / Skywest	1	3	-66.7%	1	3	-66.7	1	3	-66.7
FedEx	0	0		0	0		0	0	
Frontier	0	1		0	1		0	1	
JetBlue	12	26	-53.8%	12	26	-53.8%	12	26	-53.8%
UPS	0	0		0	0		0	0	
US Airways	4	4		4	4		4	4	
<b>Subtotal 10PM-11PM</b>	<b>17</b>	<b>35</b>	<b>-51.4%</b>	<b>17</b>	<b>35</b>	<b>-51.4%</b>	<b>17</b>	<b>35</b>	<b>-51.4%</b>
<b>11PM- 7AM Activity</b>									
	<b>2012</b>	<b>2011</b>	<b>Change</b>	<b>2012</b>	<b>2011</b>	<b>Change</b>	<b>2012</b>	<b>2011</b>	<b>Change</b>
Alaska / Horizon	0	0		0	0		0	0	
Allegiant	0	1		0	1		0	1	
Delta / Skywest	0	0		0	0		0	0	
FedEx	0	0		0	0		0	0	
Frontier	0	0		0	0		0	0	
JetBlue	8	3	166.7%	8	3	166.7%	8	3	166.7%
UPS	0	0		0	0		0	0	
US Airways	2	1	100.0%	2	1	100.0%	2	1	100.0%
<b>Subtotal 11PM-7AM</b>	<b>10</b>	<b>5</b>	<b>100.0%</b>	<b>10</b>	<b>5</b>	<b>100.0%</b>	<b>10</b>	<b>5</b>	<b>100.0%</b>
<b>TOTAL</b>	<b>27</b>	<b>40</b>	<b>-32.5%</b>	<b>27</b>	<b>40</b>	<b>-32.5%</b>	<b>27</b>	<b>40</b>	<b>-32.5%</b>

**AIRPORT OPERATIONS & AIRCRAFT NOISE VIOLATIONS**  
**LGB Current Month & Calendar Year-To-Date Statistics**  
**January 2012**

	January			CY-T-D 2012		
Air Carrier Noise Violations	2012	2011	Change	2012	2011	Change
Allegiant	0	2		0	2	
FedEx	0	0		0	0	
Frontier	0	0		0	0	
JetBlue	11	9	22.2%	11	9	22.2%
UPS	0	0		0	0	
US Airways	1	0		1	0	
<b>Subtotal</b>	<b>12</b>	<b>11</b>	<b>9.1%</b>	<b>12</b>	<b>11</b>	<b>9.1%</b>
Commuter Noise Violations	2012	2011	Change	2012	2011	Change
Alaska / Horizon	0	0		0	0	
Delta / Skywest	0	0		0	0	
US Airways	0	0		0	0	
<b>Subtotal</b>	<b>0</b>	<b>0</b>		<b>0</b>	<b>0</b>	
Non-Commercial Noise Violations	2012	2011	Change	2012	2011	Change
All GA, Charter & Other	10	17	-41.2%	10	17	-41.2
<b>TOTAL</b>	<b>22</b>	<b>28</b>	<b>-21.4%</b>	<b>22</b>	<b>28</b>	<b>-21.4%</b>
Monetary Fines						
LBMC 16.43.090E Airport Surcharges	\$1,800	\$2,900		\$1,800	\$2,900	
LBMC 16.43.100 JBU Consent Decree	\$18,000	\$6,000		\$18,000	\$6,000	
<b>TOTAL</b>	<b>\$19,800</b>	<b>\$8,900</b>		<b>\$19,800</b>	<b>\$8,900</b>	
Airport Operations (FAA)	2012	2011	Change	2012	2011	Change
Air Carrier + Commuter Carriers	0	0		0	0	
Air Taxi + General Aviation	0	0		0	0	
Military Operations	0	0		0	0	
<b>Total Aircraft Operations</b>	<b>0</b>	<b>0</b>		<b>0</b>	<b>0</b>	

Notes:

40% (4 of the 10) of JetBlue's violations for YTD 2012 can be attributed to activity between 10 PM - 11PM. This activity did not meet the criteria for Unanticipated Delay, and therefore a LBMC 16.43 violation of \$300

# January 2012

OWNER NAME	DATE	TIME	A/D	RWY	A/C TYPE	NMTID	SEL	LIMIT	STATUS
MCWATHMY Air	1/1/2012	9:28:59 AM	D	07L	B35	1	90.3	88.0	VIOLATION
JetBlue Airways Corporation	1/1/2012	10:14:02 PM	D	30	A320	9	94.7	90.0	VIOLATION
JetBlue Airways Corporation	1/2/2012	11:04:01 PM	A	30	A320	10	92.8	90.0	VIOLATION
JetBlue Airways Corporation	1/2/2012	11:44:16 PM	A	30	A320	10	93.9	79.0	ALT ENF & VIO
JetBlue Airways Corporation	1/2/2012	11:59:22 PM	D	30	A320	9	94.5	79.0	ALT ENF & VIO
JetBlue Airways Corporation	1/9/2012	10:09:14 PM	D	30	A320	9	92.7	90.0	VIOLATION
Sirio S.P.A.	1/16/2012	4:44:58 AM	A	30	FA7X	10	90.1	79.0	VIOLATION
JetBlue Airways Corporation	1/16/2012	10:18:20 PM	D	30	A320	9	95.8	90.0	VIOLATION
Prestige Air LLC	1/16/2012	11:39:58 PM	A	30	A109E	10	87.1	79.0	VIOLATION
JetBlue Airways Corporation	1/17/2012	12:15:00 AM	A	30	A320	10	91.8	79.0	ALT ENF & VIO
So Cal Flyers LLC	1/17/2012	11:56:37 PM	A	30	C510	10	86.9	79.0	VIOLATION
Private Owner	1/18/2012	11:38:13 PM	A	30	DA42	10	82.6	79.0	VIOLATION
JetBlue Airways Corporation	1/19/2012	11:15:45 PM	A	30	A320	10	93.3	79.0	ALT ENF & VIO
US Airways	1/20/2012	11:11:10 PM	A	30	CRJ9	10	91.4	79.0	VIOLATION
Span Construction & Engineering Inc.	1/20/2012	11:30:44 PM	D	30	C550	9	88.4	79.0	VIOLATION
Hillsboro Air Services Inc.	1/21/2012	11:19:42 PM	D	30	C525	9	86.4	79.0	VIOLATION
AML Leasing LLC	1/23/2012	12:01:15 AM	A	30	GLF5	10	87.1	79.0	VIOLATION
JetBlue Airways Corporation	1/23/2012	10:32:10 PM	A	30	A320	10	94.1	90.0	VIOLATION
JetBlue Airways Corporation	1/23/2012	11:24:06 PM	D	30	A320	9	94.4	79.0	ALT ENF & VIO
Zoom Zoom Zoom Aviation Inc.	1/25/2012	11:13:18 PM	D	30	LJ35A	9	81.3	79.0	VIOLATION
JetBlue Airways Corporation	1/29/2012	12:44:32 AM	A	30	A320	10	90.3	79.0	ALT ENF & VIO
Kalitta Charters II LLC	1/31/2012	9:28:09 PM	D	30	B722	9	112.9	102.5	VIOLATION

**DEFINITIONS:**

**A/D** — Arrival and Departure

**RWY** — Runway

**A/C Type** — Aircraft Type

**SEL** — SENEL — Single Event Noise Equivalent Level

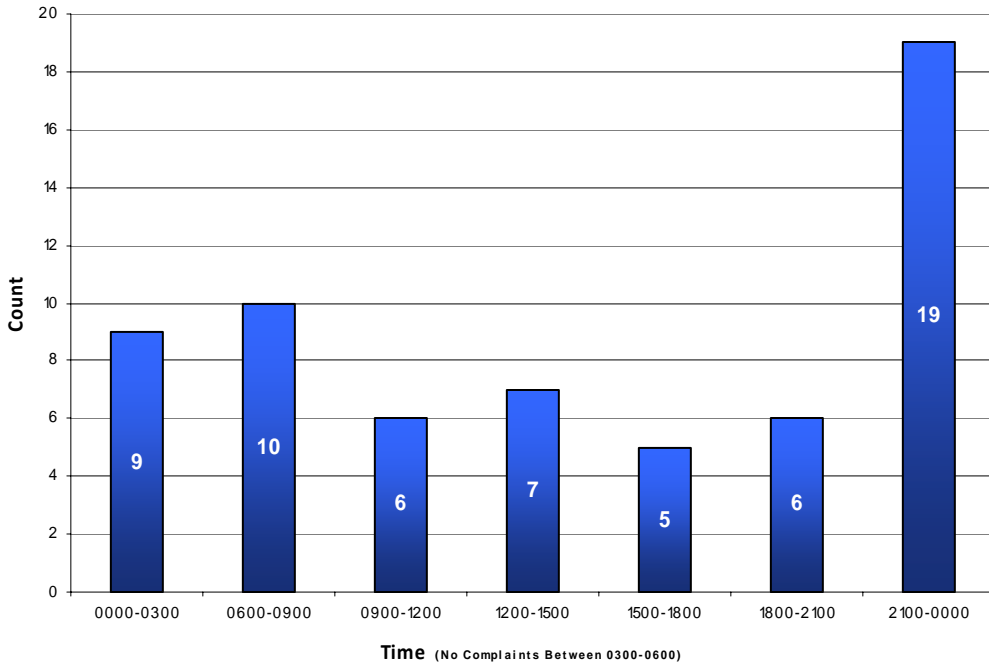
**ALT ENF** — Alternative Enforcement

**NMTID** — Noise Monitor

# January 2012

## LGB AIRCRAFT NOISE COMPLAINTS

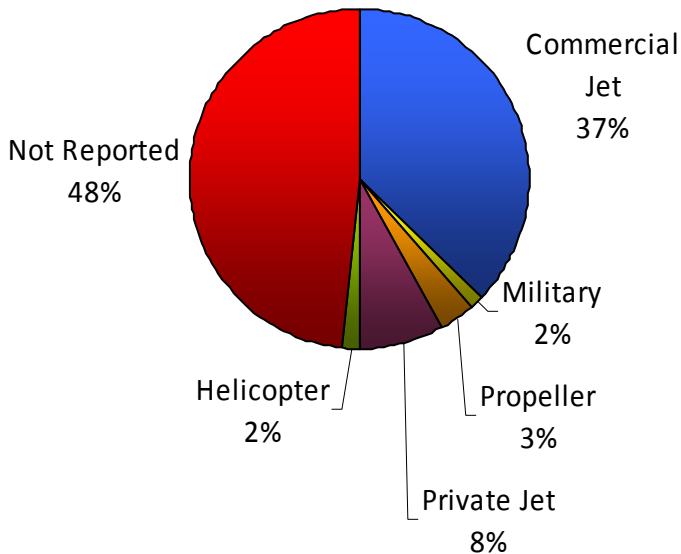
### Complaints per Hour



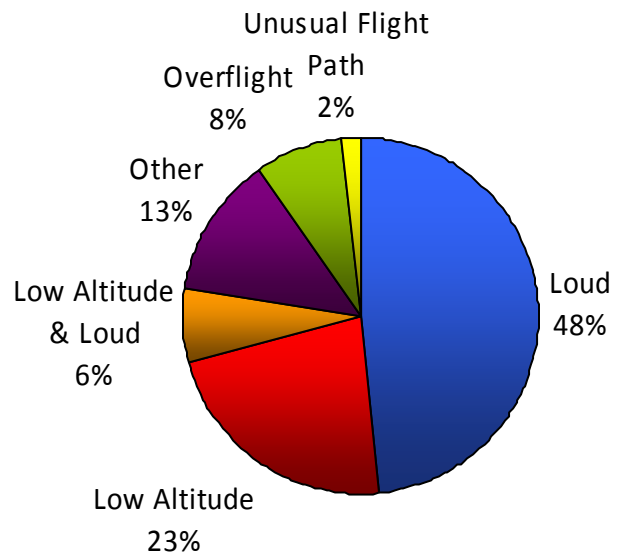
### Complaints By Zip Code

90740	2
90805	13
90807	17
90808	1
90815	3
92626	13
92649	2
Not Reported	11
<b>Grand Total</b>	<b>62</b>

### Complaints by Type of Aircraft



### Complaints by Type of Concern





# LONG BEACH AIRPORT

Building a Better Way to Fly



## Long Beach Airport

4100 E. Donald Douglas Drive, Long Beach, CA 90808

[www.lgb.org](http://www.lgb.org) • [lgbapt@longbeach.gov](mailto:lgbapt@longbeach.gov)

Administration • (562) 570-2619