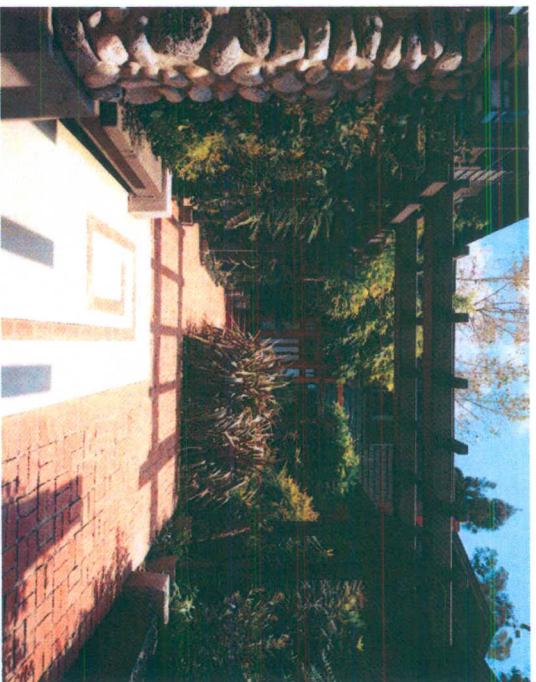


PRECEDENT STUDIES

Long Beach has a proud tradition of Craftsman-style houses throughout the city. Many of the gardens of such homes seemed to recall a wild landscape, with planting that complemented the buildings with a wide variety of plant colors and textures. Porches and patios surrounded by lush gardens enhanced with vine covered trellises and privacy fences, knit the house into the gardens and encouraged outdoor living.

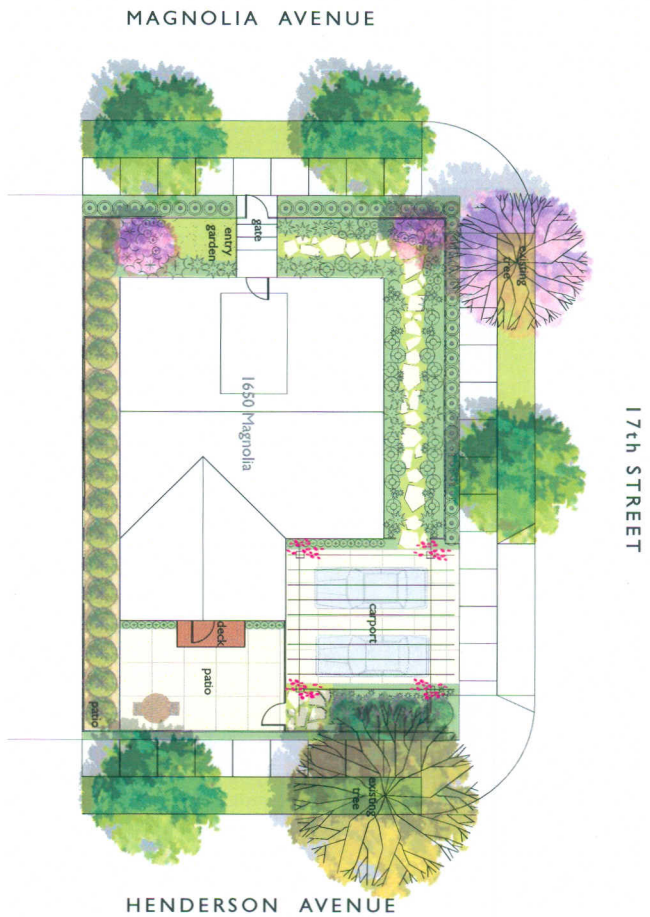




PLANTING DESIGN GOALS

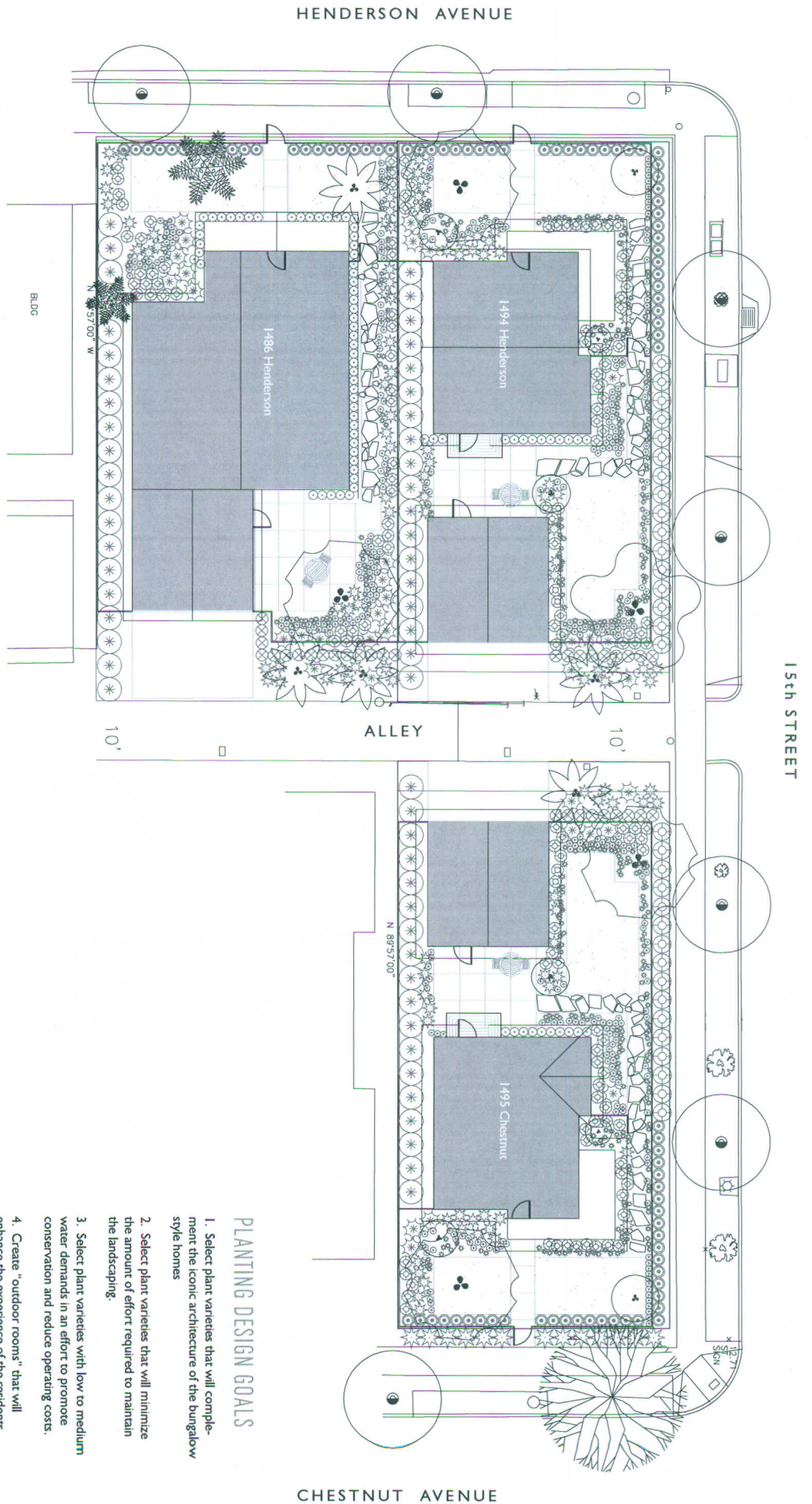
1. Select plant varieties that will complement the iconic architecture of the bungalow style homes
2. Select plant varieties that will minimize the amount of effort required to maintain the landscaping.
3. Select plant varieties with low to medium water demands in an effort to promote conservation and reduce operating costs.
4. Create "outdoor rooms" that will enhance the experience of the residents.





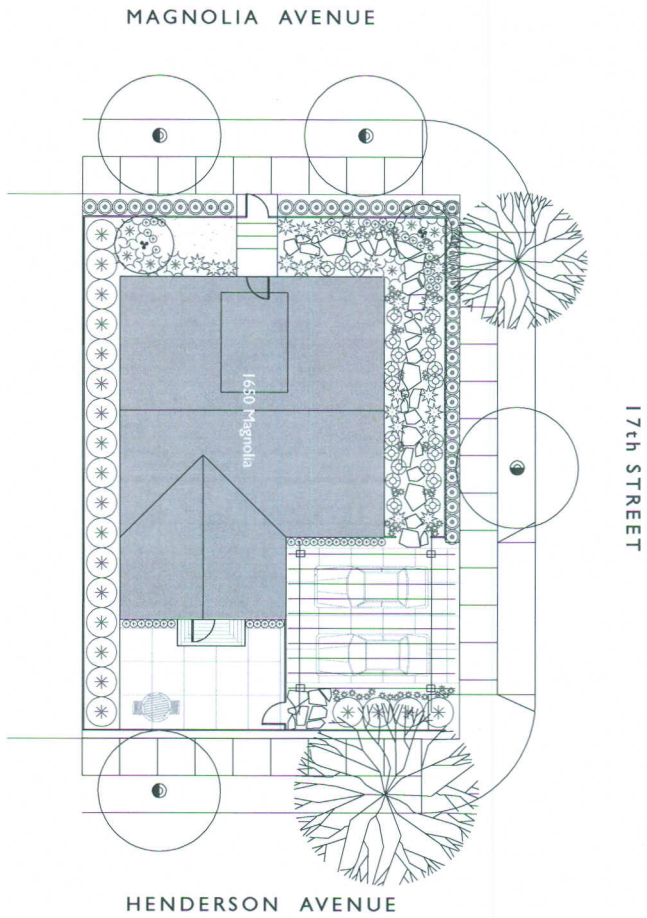
PLANTING DESIGN GOALS

1. Select plant varieties that will complement the iconic architecture of the Dunelow style homes
2. Select plant varieties that will minimize the amount of effort required to maintain the landscaping.
3. Select plant varieties with low to medium water demands in an effort to promote conservation and reduce operating costs.
4. Create "outdoor rooms" that will enhance the experience of the residents.



PLANTING DESIGN GOALS

1. Select plant varieties that will complement the iconic architecture of the bungalow style homes
2. Select plant varieties that will minimize the amount of effort required to maintain the landscaping.
3. Select plant varieties with low to medium water demands in an effort to promote conservation and reduce operating costs.
4. Create "outdoor rooms" that will enhance the experience of the residents.



PLANTING DESIGN GOALS

1. Select plant varieties that will complement the iconic architecture of the Bungalow style homes
2. Select plant varieties that will minimize the amount of effort required to maintain the landscaping.
3. Select plant varieties with low to medium water demands in an effort to promote conservation and reduce operating costs.
4. Create "outdoor rooms" that will enhance the experience of the residents.

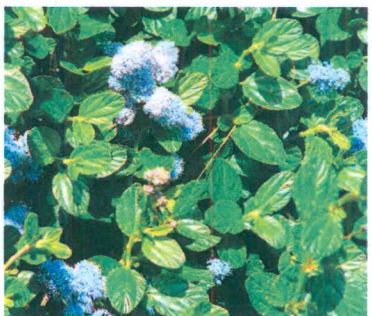




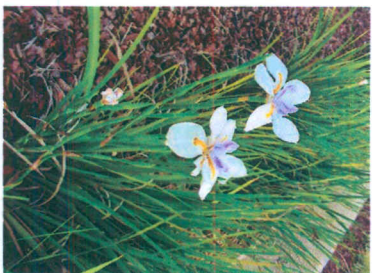
S-1 *Echium fastuosum*
Pride-of-Madaira



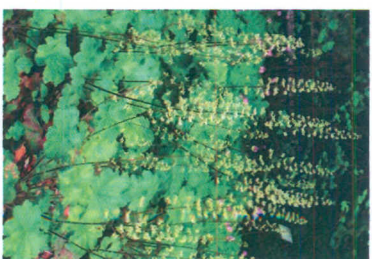
S-2 *Angozanthos 'Pink Joey'*
Kangaroo Paw



S-3 *Ceanothus 'Jankee Point'*
California Lilac



S-4 *Dietes vegeta*
Fornight Lily



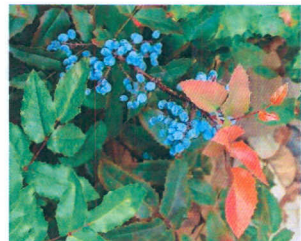
S-5 *Heuchera maxima*
Island Alum Root



S-6 *Dodonea viscosa 'Purpurea'*
Purple Hop Bush



S-7 *Phormium 'Jack Sprat'*
Dwarf Flax



S-8 *Malonia aquifolium*
Oregon Grape



S-9 *Phormium 'Maori Maiden'*
Flax



S-10 *Pennisetum rubrum*
Purple Fountain Grass



GC-1 *Dymondia marginata*
N.C.N.



GC-2 "No mow" Fescue
Lawn substitute



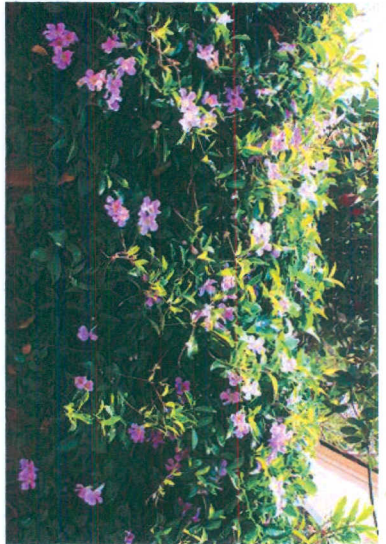
GC-3 *Cerastium tomentosum*
Snow-in-Summer



GC-4 *Senecio mandraliccae*
Blue Chalksticks



GC-5 *Stachys byzantina*
Lamb's Ears



V-1 *Cyrtosoma callistegioides*
Lavender Trumpet Vine



T-1 *Arbutus unedo*
Strawberry Tree



T-2 *Platanus racemosa*
California Sycamore



T-3 *Tristramia conferta*
Brisbane Box



T-4 *Cercis occidentalis*
Western Redbud



Gravel: Bark Brown - size 2"
Supplier: Sunburst Rock



Paver: Rainbow color
Supplier: Sunburst Rock



Privacy fence and trellis designed to
complement Craftsman style