



# City of Long Beach Health Equity Investment Framework



# Agenda

- Background
- Introducing The Health Equity Investment Framework
- The Framework in Practice: COVID-19
- Health Equity Proposal Response and Results
- Questions and Reactions



# The Long Beach Context

- The City of Long Beach is a diverse community of 465,000 people.
- The diversity is reflected in the community's race and ethnicity, income, sexual orientation, access to health care and healthy lifestyle supports, housing access and so much more.
- Life expectancy differs by 17 years across 4 miles.
- COVID-19 highlighted and exacerbated health disparities in the City
- Through CARES Act and American Recovery Act funding, we sought a new approach to addressing these disparities.
- We created our Health Equity Investment Framework.





A map of Los Angeles County illustrating the distribution of the Healthy Places Index Percentile across various census tracts. The map uses four color-coded categories: dark green for the highest percentile (75.1% - 100%), light green for the second-highest (50.1% - 75%), yellow for the third-highest (25.1% - 50%), and red/pink for the lowest (0% - 25%). Major cities like Paramount, Long Beach, Signal Hill, and Redondo are labeled. A legend in the top right corner defines the color coding. At the bottom left, there is a scale bar indicating distances from 0 to 5 miles. On the bottom right, a compass rose shows cardinal directions (N, S, E, W). The Pacific Ocean and San Pedro Bay are visible at the southern edge of the county.

**Legend**  
**Hosp Per 10,000**

10.6 - 27
27.1 - 55
55.1 - 82
82.1 - 625

**Legend**

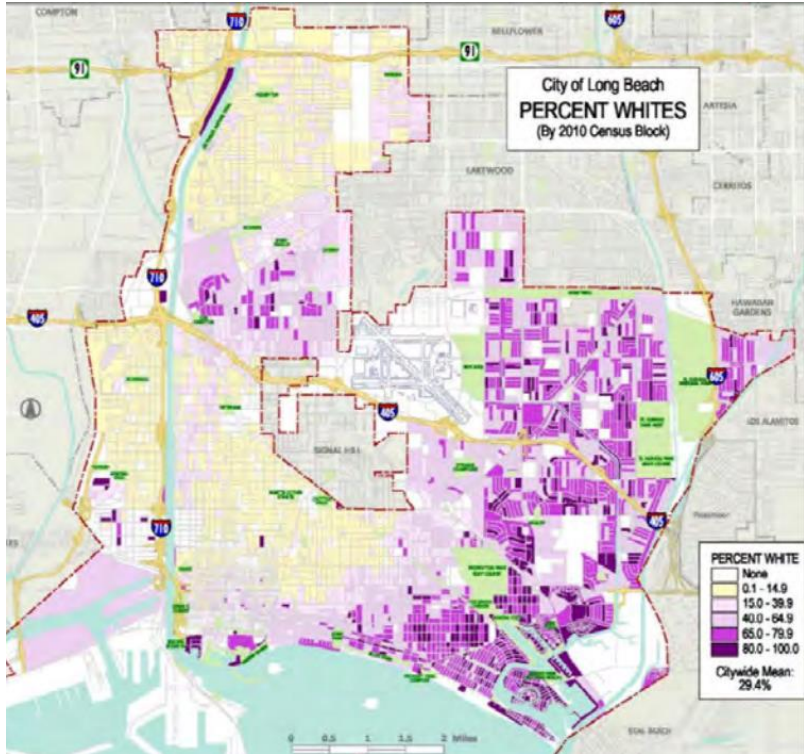
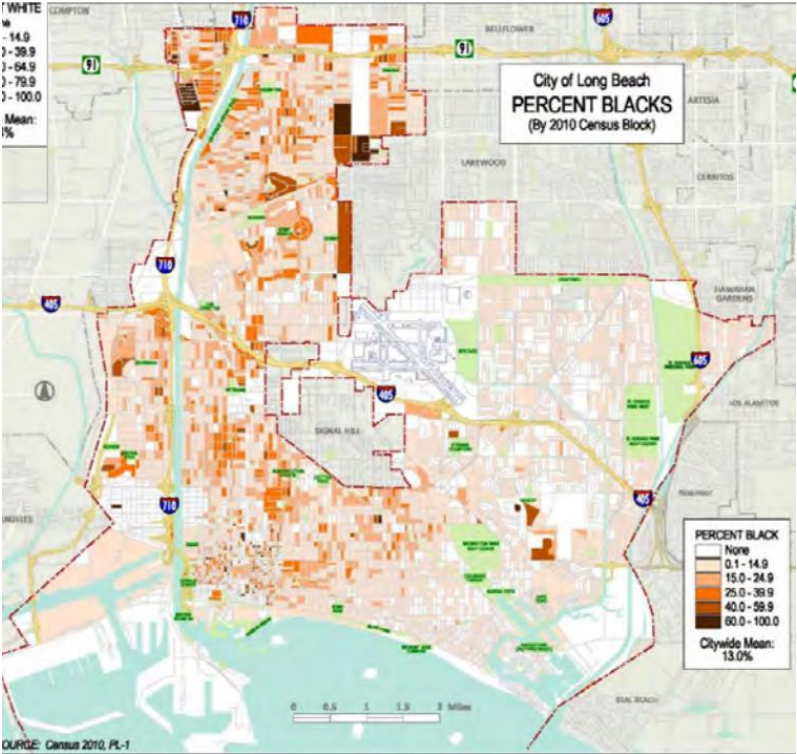
**Percent of Pop. With Diabetes**

- 0 - 7.7%
- 7.8% - 9.9%
- 10% - 11.5%
- 11.6% - 26.4%

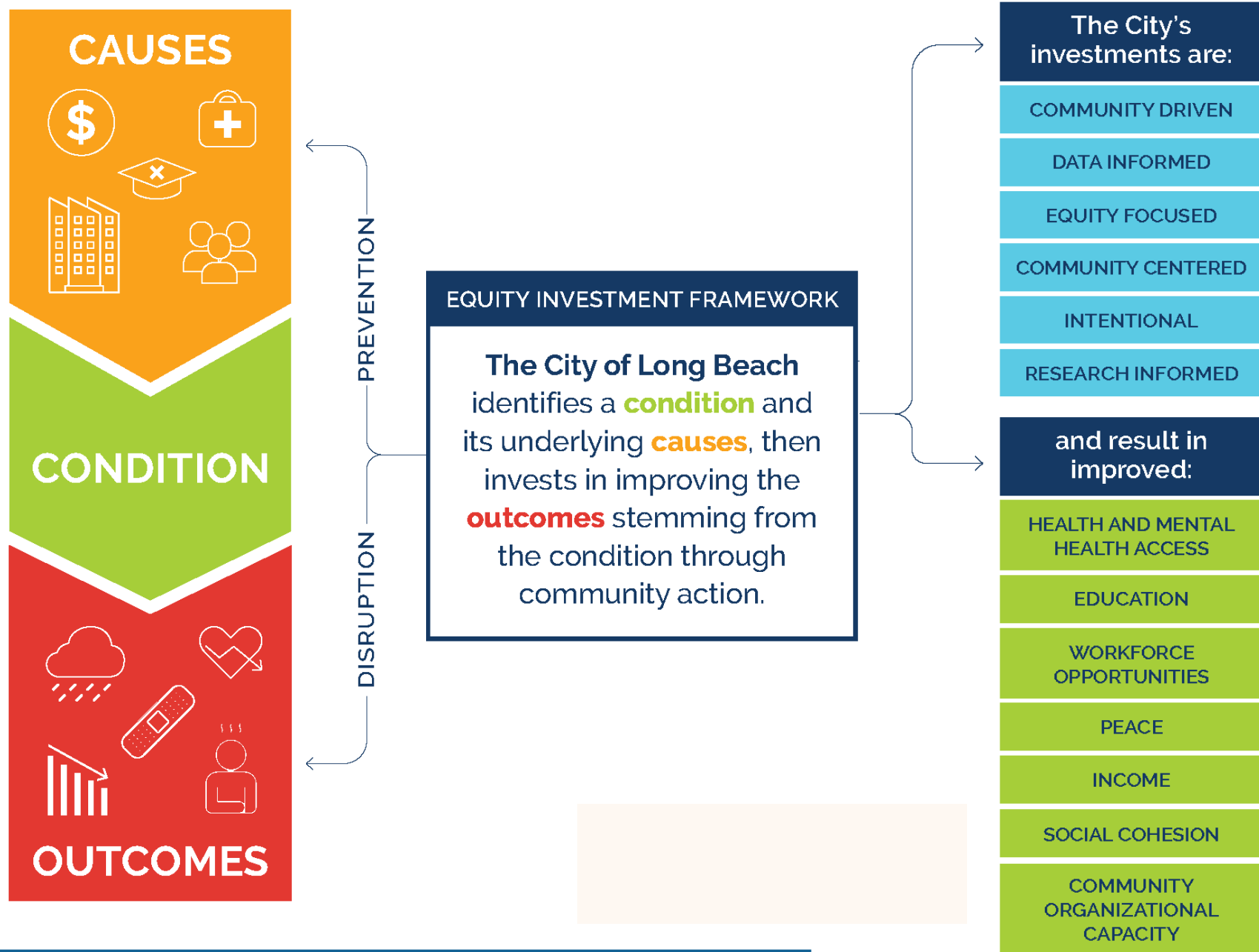
Sources: BLS-HMCS; Census 2000; Highway Department; F. H. Hayes Co. (Japan); NCT; Civ. China (Hong Kong); Civ. Korea; Civ. (Thailand); NGCC; SO; OpenStreetMap contributors; and the Global Community.

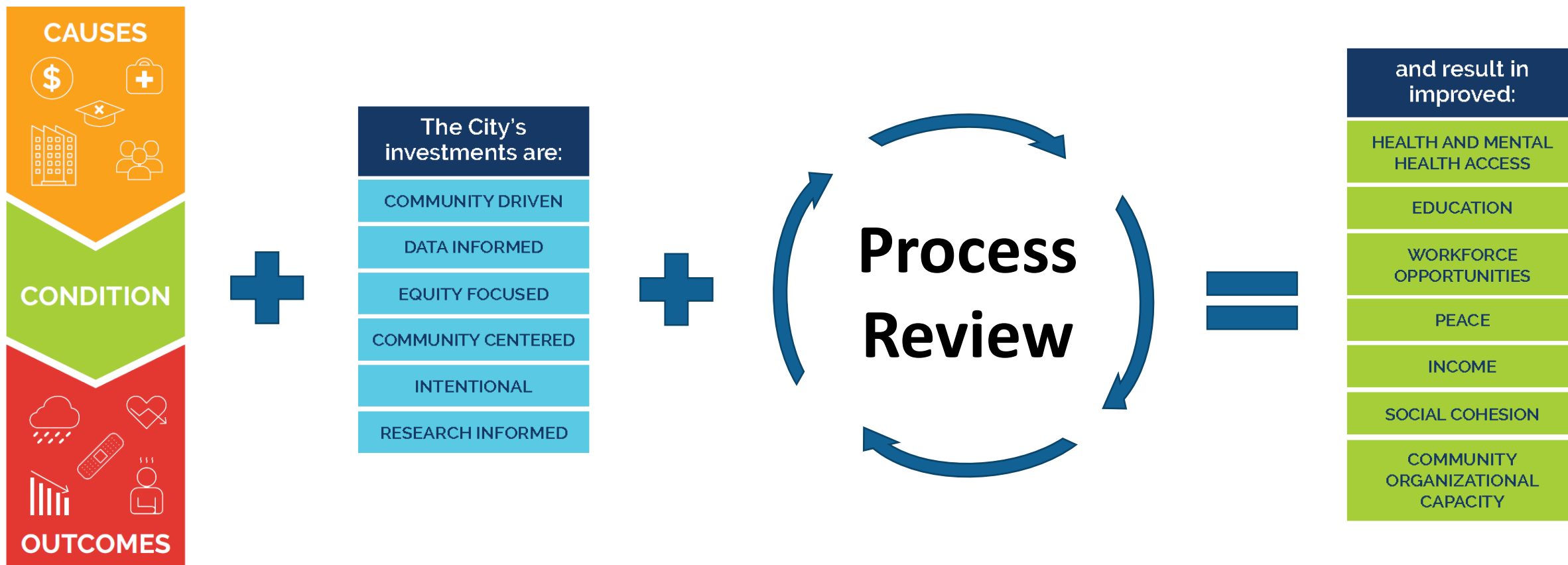


# Race and Ethnicity Distribution









Introducing The Framework – What's Different?



## Condition of Interest

COVID-19 Hospitalizations

### Contributing Factors

- Underlying health conditions (diabetes and hypertension)
- Race/Ethnicity
- Neighborhood/social condition
- COVID-19 vaccination status

### Impacts of the Condition

- Negative health impacts
- Poorer mental health
- Nutrition insecurity
- Income loss
- Increased violence
- Trauma
- Isolation

### Invest in Prevention & Addressing Outcomes

COVID-19 Education and Vaccine Outreach; Nutrition Security; Meeting Basic Needs; Mental Health Supports and Trauma Informed Responses; Safe Neighborhoods and Violence Prevention; Parent and Child Health, Physical Activity Engagement; Economic Inclusion and Resilience; Health Education and Outreach; Chronic Disease Prevention and Management

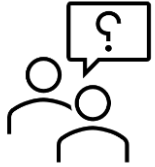
# Framework in Practice: Health Equity Community Projects RFP

- Streamlined and simplified the RFP language and processes to improve the ability of organizations to apply for funding
- Focused on outreach and engagement
- Invested in technical assistance to build the capacity of smaller and newer organizations to build a stronger network of providers across Long Beach





# Early Impacts: Investments in Technical Assistance



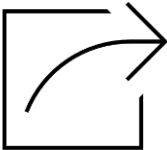
## 23 Organizations sought Technical Assistance

- 37% had never applied to the City for funding
- 65% were small organizations with a maximum of 5 paid staff



## 114 prospective bidders and 63 proposers to the RFP

- 55% conversion percentage which is above average for City procurements



## 93 projects submitted by 63 organizations

- 1 of 5 organizations had never applied to the City before
- 45% had never received a contract/funding from the City previously

# Summary of Proposals Received by Category

93

Total proposals received



\$19,620,162

Total amount requested

Category	# Proposals	Funding Requested
Mental Health Supports or Trauma Informed Responses	21	\$4.2M
COVID-19 Edu and Vax Outreach	15	\$3.0M
Economic Inclusion and Resiliency	12	\$3.0M
Physical Activity Engagement	11	\$2.5M
Safe Neighborhoods and Violence Prevention	11	\$2.5M
Meeting Basic Needs	8	\$2.1M
Chronic Disease Prevention/Management	7	\$1.7M
Health Education and outreach	5	\$978K
Parent and Child Health	3	\$547K
<b>Total</b>	<b>93</b>	<b>\$19.6M</b>



# Summary of Funding Gaps

93



Total proposals received

18



Unfunded  
contract-ready  
proposals

8

Tier 3 organizations  
requiring capacity  
building before project  
implementation

21



Proposals funded with existing  
funding sources

\$3,027,921

Total amount we are funding

- Health, mental health, and basic needs
- Educational enrichment activities
- Youth development
- Community advocacy
- Systems navigation/CHW model

# Summary of Unfunded Contract-Ready (Tiers 1 and 2) Projects

18



Unfunded contract-ready proposals



Contract-ready unfunded amount

**\$3,777,539**

Category	# Proposals	Funding Requested
Mental Health Supports or Trauma Informed Responses	8	\$1.3M
Physical Activity Engagement	3	\$606K
Meeting Basic Needs	3	\$844K
Chronic Disease Prevention/Management	2	\$454K
COVID-19 Edu and Vax Outreach	1	\$465K
Economic Inclusion and Resiliency	1	\$50K
<b>Total</b>	<b>18</b>	<b>\$3.8M</b>



# Summary of Tier 3 Organizations

## Tier 3 Organizations

(Organizations requiring capacity building trainings before funding and project implementation)

- African American Cultural Center of Long Beach
- AOC7 Neighborhood Organization
- Global Refugee Awareness Healing Center
- Indigenous Circle of Wellness
- MORE Mothers
- New Generations, Inc.
- Puente Latino Association Inc.
- The RightWay Foundation

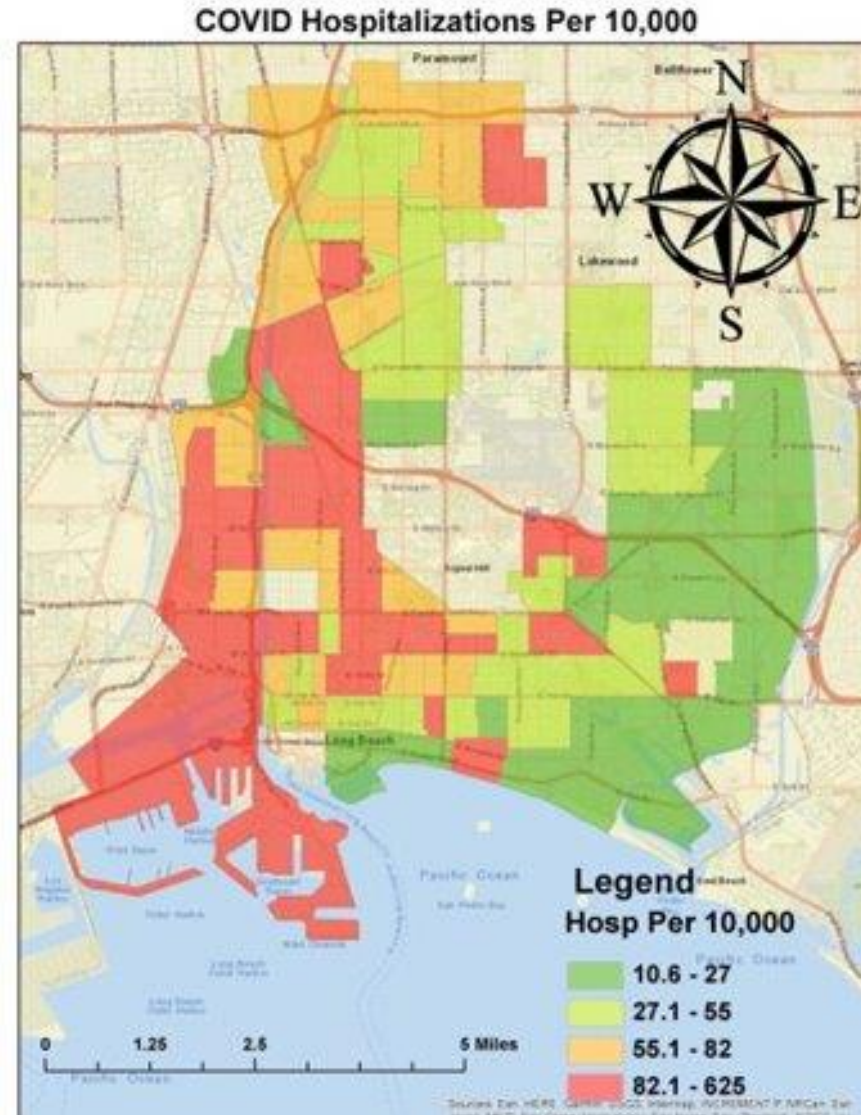
## Technical Assistance

(Examples of types listed below)

- Budget development
- Program evaluation and data management
- Grant writing
- Program development

Total Proposed Budget: \$1.5M

# Addressing Health Disparities

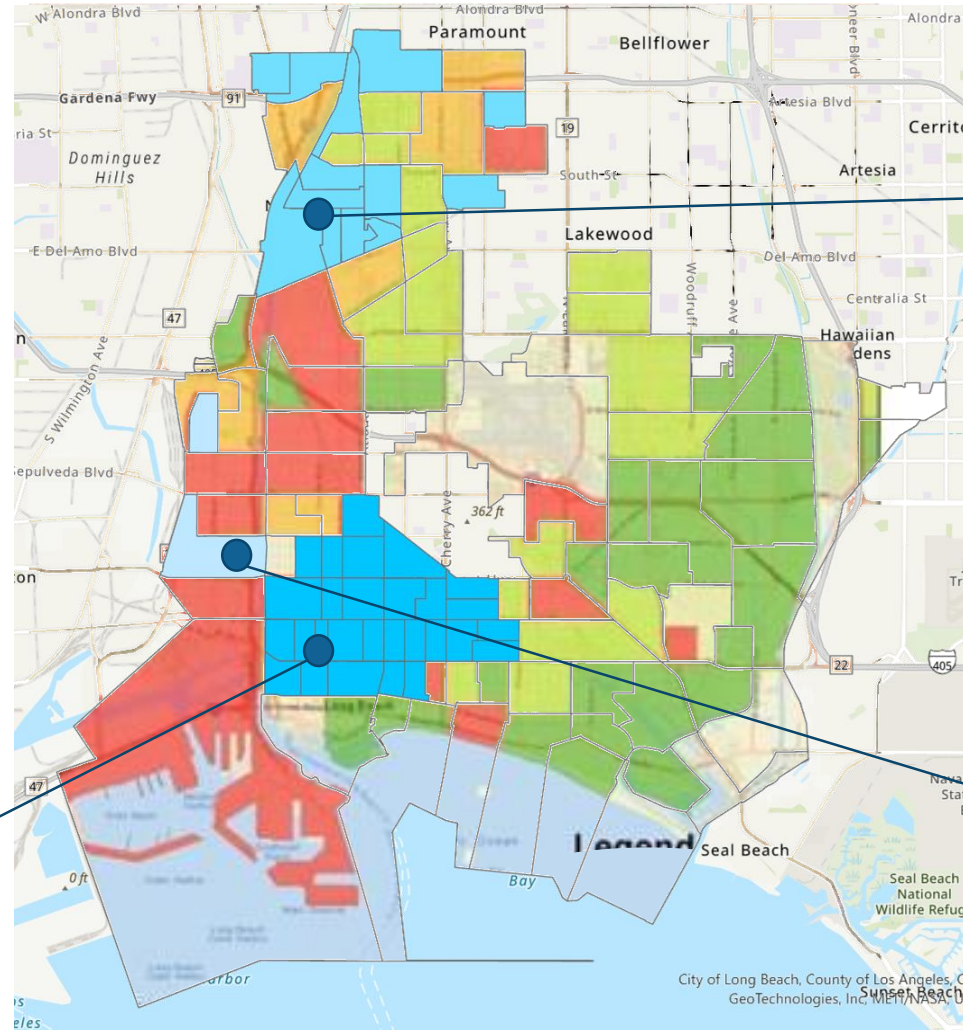


## Health Equity Proposal Response and Results

# Addressing Health Disparities

Proportion of Funded Proposals Focused on Region

- 32.3% (West)
- 35.5% (North)
- 38.7% (Central)



## North

1. Mental Health Supports or Trauma-Informed Responses
- 2a. COVID-19 Education and Vaccination Outreach
- 2b. Chronic Disease Prevention and/or Management

## Central

1. COVID-19 Education and Vaccination Outreach
2. Mental Health Supports

## West

1. Mental Health Supports or Trauma-Informed Responses
2. COVID-19 Education and Vaccination Outreach



# Opportunities for Impact

- Funded projects
  - Supplement budgets
- Unfunded projects
  - Connect to opportunities for funding
- Tier 3 organizations
  - Help find support for ongoing capacity building

26%

Average budget cut for projects requesting \$100,000+

36%

Average budget cut for projects requesting \$200,000+