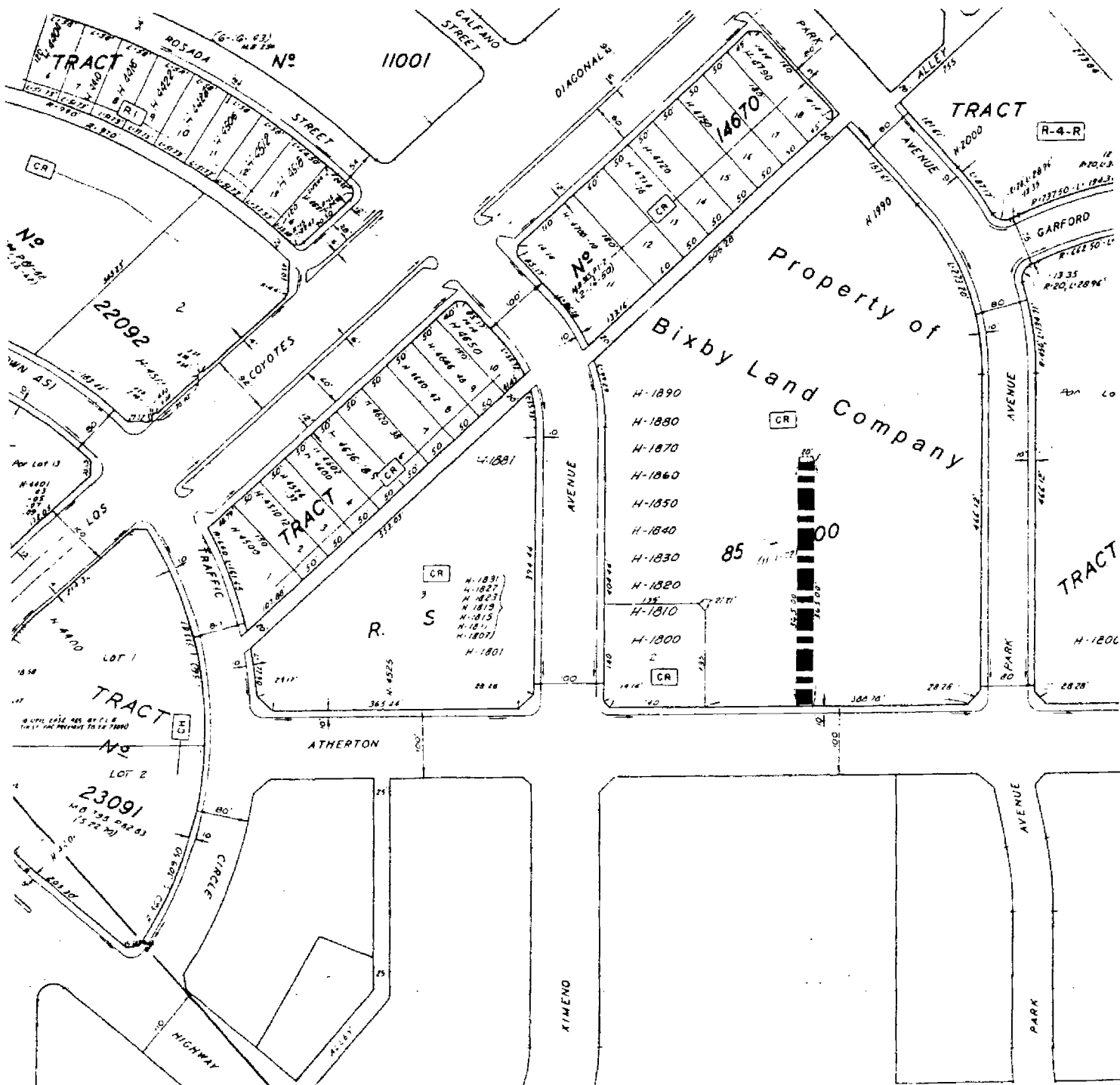


C-15

SKETCH NO. 207QC



EASEMENT AREA TO BE QUITCLAIMED

EXHIBIT A



EXHIBIT "B"

Sketch to Accompany Legal Description



PARCELS
R.S.B. 85/100

40'

PARK AVENUE
TO LOS COYOTES DIAGONAL

40'

T.P.O.B.

3'

36.00'
N89°54'59"W

50.00'
N00°05'01"E

50'

50'

P.O.B.

N89°54'59"W 287.00'

← TO XIMENO AVENUE

ATHERTON STREET



HUNSAKER & ASSOCIATES
IRVINE, INC.
PLANNING • ENGINEERING • SURVEYING
Three Hughes • Irvine, CA 92618 • PH: (949) 583-1010 • FX: (949) 583-0759

FIRE HYDRANT EASEMENT

IN THE CITY OF LONG BEACH, COUNTY OF LOS ANGELES, STATE OF CALIFORNIA

DATE: 11-01-02	REV. DATE: NONE	DWG By: V. Edge	CK'd By: R. Williams	SCALE: 1" = 50'	W.O. 2123.1X
I:\BixbyLB-Circle\LD\5616\sht01.dwg			H&A LEGAL No. 5616	SHEET 1 OF 1	