

**R-38**

# CITY OF LONG BEACH

DEPARTMENT OF PARKS, RECREATION & MARINE

2760 N. Studebaker Road, Long Beach, CA 90815-1697  
(562) 570-3100 • FAX (562) 570-3109  
www.LBParks.org



selected  
**best in the nation**

June 15, 2010

HONORABLE MAYOR AND CITY COUNCIL  
City of Long Beach  
California

## RECOMMENDATION:

Authorize the City Manager to accept a non-monetary donation of planning, labor, materials, and improvements, equivalent to approximately \$46,000, for Phase II construction of Rosie the Riveter Park, located on the southwest corner of Clark Avenue and Conant Street; and execute a right-of-entry permit and any related documents with the Long Beach Rosie the Riveter Foundation. (District 5)

## DISCUSSION

On September 18, 2008, the Parks and Recreation Commission (Commission) unanimously approved Master Plan improvements for Rosie the Riveter Park, located on the southwest corner of Clark Avenue and Conant Street, which is more particularly described in the Commission staff report (attachment). The project is intended to memorialize and honor the efforts of the tens of thousands of women who produced military aircraft during World War II, and who were known as "Rosie the Riveter." The project began October 26, 2009, and consists of two phases. Phase I of the project was completed by the Department of Parks, Recreation and Marine (PRM), and was funded by a \$100,000 grant from the Los Angeles County Regional Park and Open Space District, Excess Funds program. Phase II funding will be solicited by the Long Beach Rosie the Riveter Foundation (LBRRF), a 501(c)(3) corporation, which was established to raise money for this project.

In 2010, LBRRF received a \$46,000 grant from the Long Beach Navy Memorial Heritage Association to complete Phase II of the project. Phase II will consist of the installation of a walking path, interpretive signage, benches, and memorabilia. LBRRF will be solely responsible for the selection, contracting, and management of the Phase II contractors, and will work closely with PRM, who will maintain general oversight of the project.

HONORABLE MAYOR AND CITY COUNCIL

June 15, 2010

Page 2

This matter was reviewed by Deputy City Attorney Gary J. Anderson on May 20, 2010, and Budget Management Officer Victoria Bell on May 25, 2010.

TIMING CONSIDERATIONS

City Council action is requested on June 15, 2010, in order to enable the execution of the right-of-entry permit, to allow LBRRF to proceed with the selection of contractors, and to obtain all applicable approvals to begin Phase II construction from the City's Department of Development Services and/or the Department of Parks, Recreation and Marine.

FISCAL IMPACT

Since the project is funded in its entirety by grants or third-party solicited funds, PRM anticipates no impact from Phase II construction to the General Fund (GP) in the Department of Parks, Recreation and Marine (PR). PRM will maintain the park under its existing maintenance contract; therefore, PRM expects no additional maintenance costs related to this project. The recommended action will result in a positive impact on jobs. This project will provide jobs in the construction and trades industries. However, because PRM will have no control over the selection, contracting, and management of the Phase II contractors, it is not known at this time how many jobs will be created.

SUGGESTED ACTION

Approve recommendation.

Respectfully submitted,




PHIL T. HESTER  
DIRECTOR OF PARKS, RECREATION AND MARINE

PTH:SJG:ak

Attachment

APPROVED:



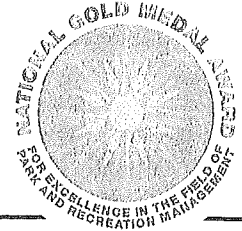
---

PATRICK H. WEST  
CITY MANAGER



# CITY OF LONG BEACH

DEPARTMENT OF PARKS, RECREATION & MARINE



2760 N. Studebaker Road, Long Beach, CA 90815-1697  
(562) 570-3100 • FAX (562) 570-3109  
www.LBParks.org

selected  
**best in the nation**

September 18, 2008

MEMBERS OF THE PARKS AND RECREATION COMMISSION

RECOMMENDATION:

Approve the Master Plan Improvements for Rosie the Riveter Park.

## DISCUSSION

The action before the Parks and Recreation Commission relative to this project is stated in the City Charter section 902 (b), of the powers and duties of the Parks and Recreation Commission, as follows:

(b) Recommend to the City Manager, City Council, and Planning Commission the approval or rejection of plans for improvement of parkland for public recreation and for other purposes....

**Background.** The City Charter does not provide any specific guidelines for the Parks and Recreation Commission to use in carrying out its powers and duties relative to park improvement plans. Thus, personnel experience and expertise are the appropriate guides to such decisions.

Rosie the Riveter Park is a 2.6-acre passive park located at the southwest corner of Clark Avenue and Conant Street (Attachment #1). Councilwoman Gerrie Schipske formed a Rosie the Riveter Task Force in 2006, to advise the Councilwoman and City staff on events and future plans for the park. In 2007, the City received \$100,000 in grant funds from the Los Angeles Park and Open Space District Excess Funds program for improvements at the park. Following the grant award, Planning and Development Bureau staff secured the services of a landscape architectural consultant to prepare a Master Plan for Rosie the Riveter Park. The attached proposed Master Plan (Attachment #2) is a result of collaboration between the Council office, the task force, and City staff.

The Commission is asked to recommend on the suitability of the proposed Master Plan. The existing park is passive, consisting primarily of turf and trees. The intent of the task force master plan design was to maintain the passive nature of the park, while also memorializing and celebrating the countless women that served as "Rosie's" at the adjacent historic Douglas Aircraft plant that was in operation during World War II, specifically focusing on the construction of the B-17 (see attached master plan).

The improvements to the park include the following:

- Memorial Plaza with prefabricated steel cage structures representing both bombardier and tail sections of a B-17 aircraft;
- Sculptural interpretive markers with historical information on Rosie the Riveter;
- Rose garden with seating;
- Steel shade structure with history panels depicting women in the workforce during WWII;
- Meandering pedestrian walkway with lighting circling the park;
- Nine parking spaces and one (1) van accessible space;
- Adjacent 39 space parking lot for special events.

SUGGESTED ACTION:

Approve recommendation.

Respectfully submitted,



DENNIS ESCHEN  
MANAGER OF PLANNING & DEVELOPMENT BUREAU

APPROVED:



PHIL T. HESTER  
DIRECTOR

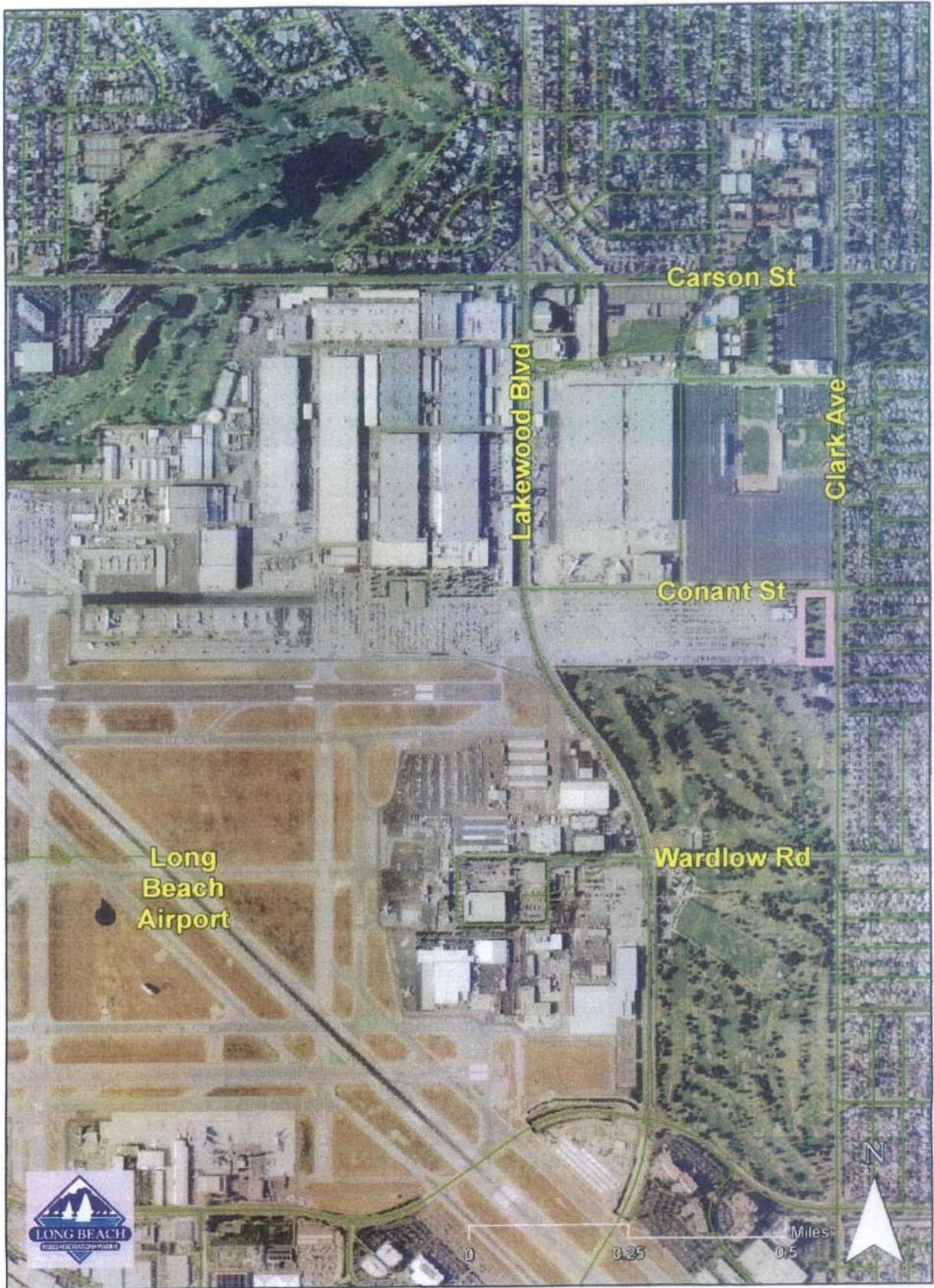
PTH:DLE:amm  
P:\P&R\Letters\091808RosietheRiveterDesign.doc

Attachments: Aerial Photo of Rosie the Riveter Park  
Rosie the Riveter Master Plan



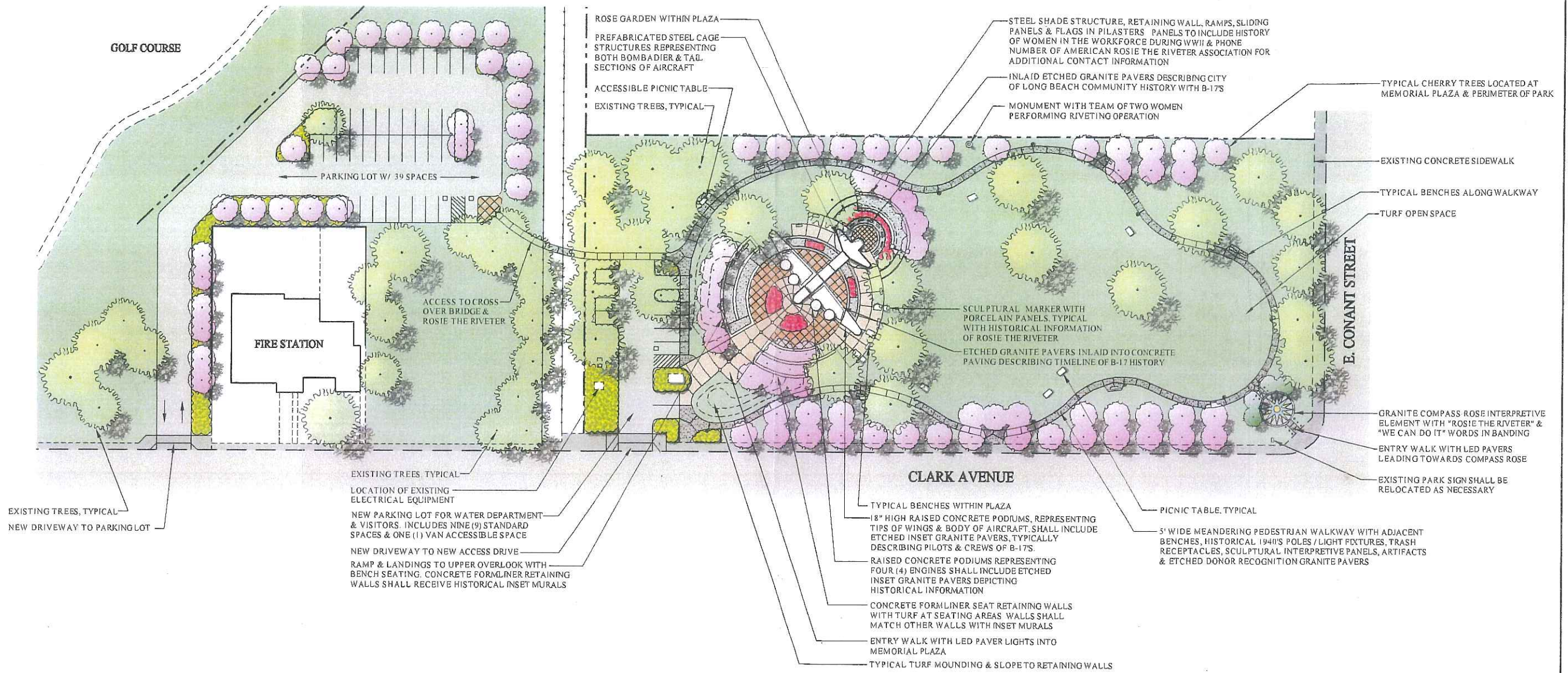
# Rosie the Riveter Park

Attachment 1



Rosie the Riveter 06-12-2007.mxd sg



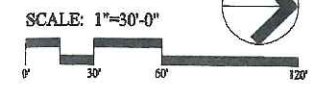


Preliminary Layout Plan

# Rosie the Riveter Park

Long Beach, CA

CITY OF LONG BEACH PARKS, RECREATION & MARINE



**NÜVIS**  
 LANDSCAPE ARCHITECTURE  
 AND PLANNING  
 P: 714.754.7344  
 F: 714.754.7511  
 CA 1226  
 06-221.01 07-21-2008  
 SHT 1 OF 1