

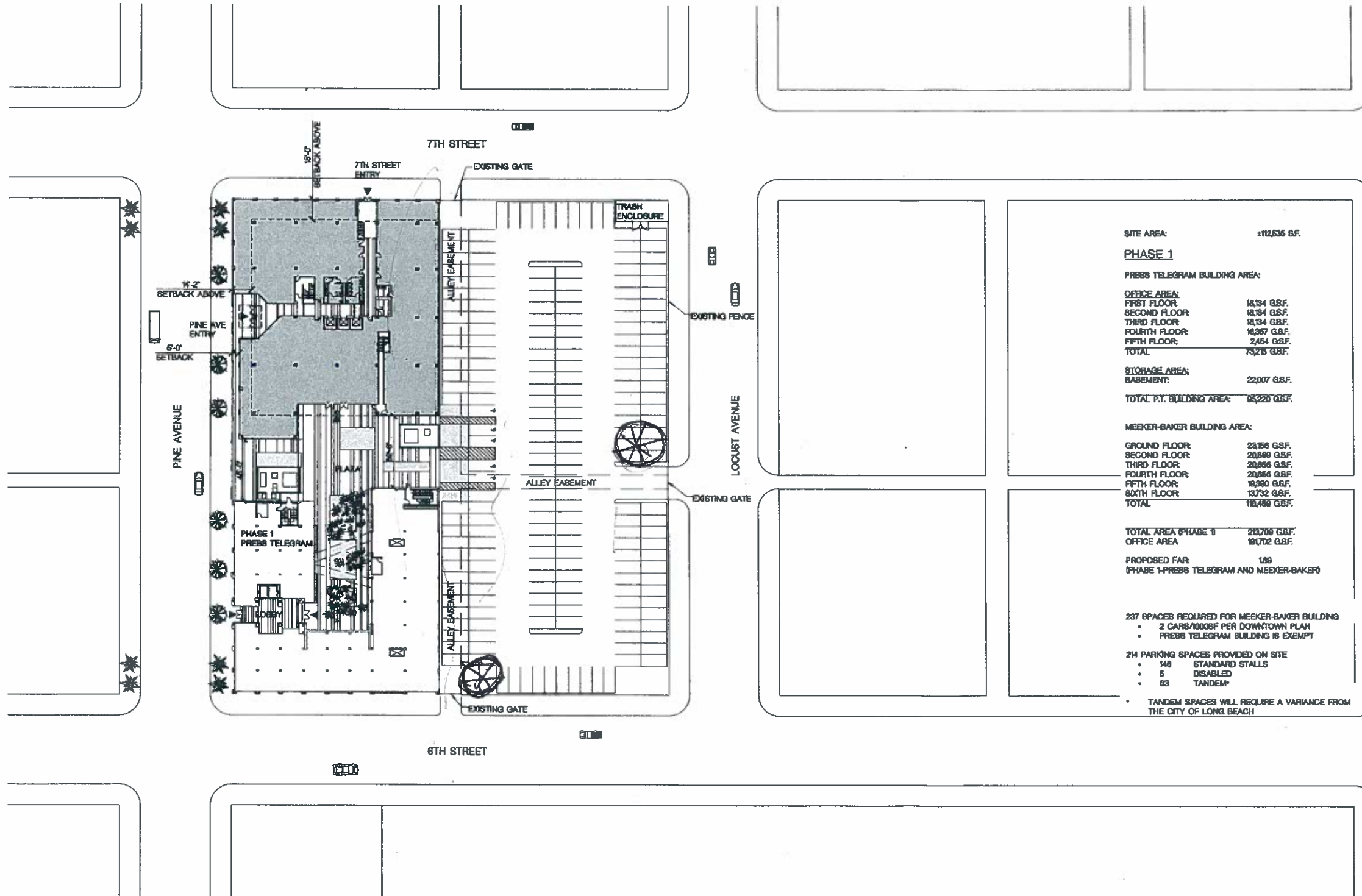
# 7th. and PINE OFFICE BUILDING

12044 - 06.06.2012

Meeker Baker

7th & Pine  
Long Beach, California





SITE AREA: ±12,636 SF.

**PHASE 1**

**PRESS TELEGRAM BUILDING AREA:**

OFFICE AREA:  
 FIRST FLOOR: 18,314 G.S.F.  
 SECOND FLOOR: 18,314 G.S.F.  
 THIRD FLOOR: 18,314 G.S.F.  
 FOURTH FLOOR: 18,317 G.S.F.  
 FIFTH FLOOR: 2,484 G.S.F.  
 TOTAL: 75,256 G.S.F.

STORAGE AREA:  
 BASEMENT: 22,007 G.S.F.

TOTAL P.T. BUILDING AREA: 97,263 G.S.F.

**MEEKER-BAKER BUILDING AREA:**

GROUND FLOOR: 23,166 G.S.F.  
 SECOND FLOOR: 20,899 G.S.F.  
 THIRD FLOOR: 20,856 G.S.F.  
 FOURTH FLOOR: 20,856 G.S.F.  
 FIFTH FLOOR: 18,980 G.S.F.  
 SIXTH FLOOR: 13,732 G.S.F.  
 TOTAL: 118,489 G.S.F.

TOTAL AREA (PHASE 1): 215,752 G.S.F.

OFFICE AREA: 191,702 G.S.F.

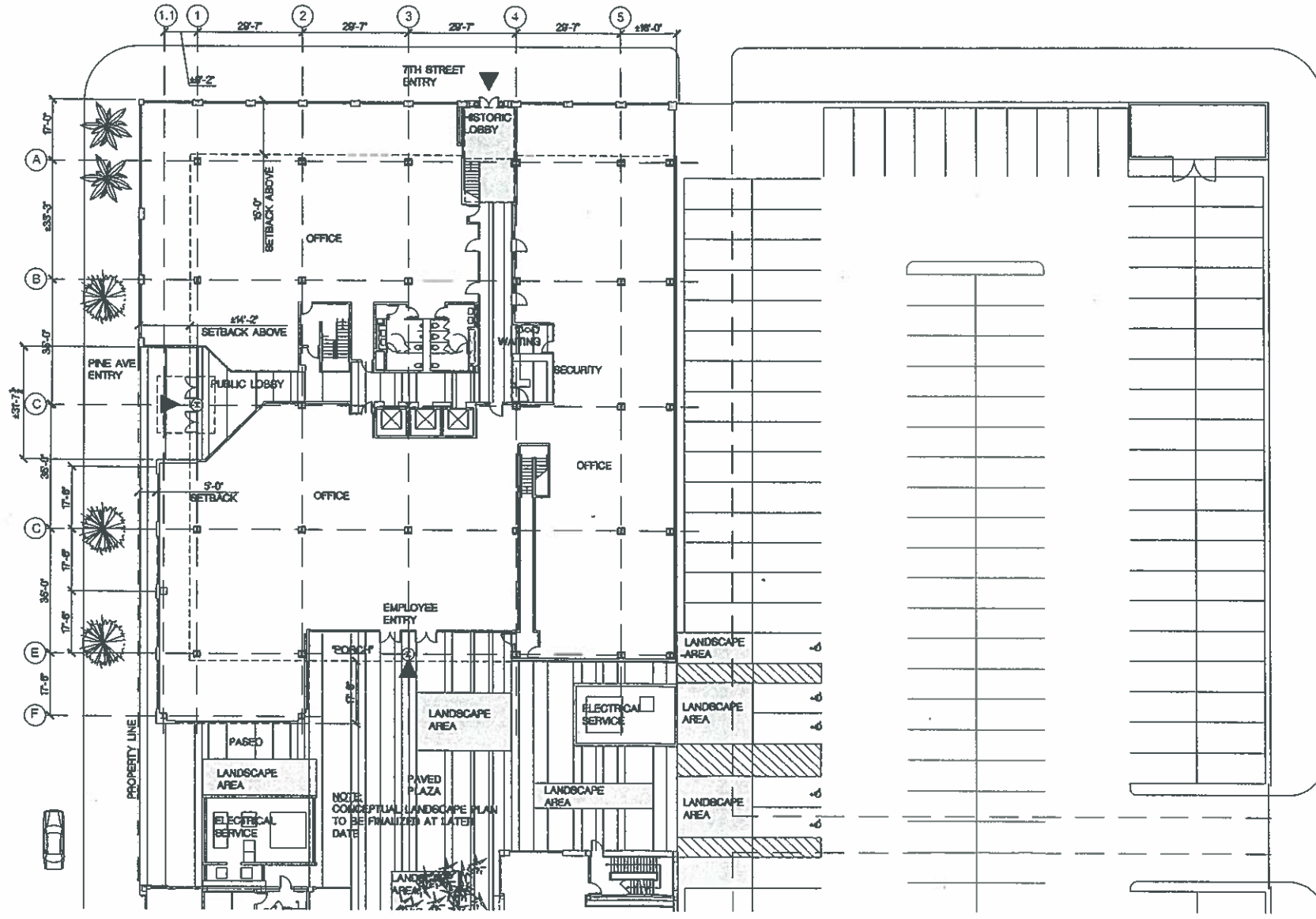
PROPOSED FAR: 1.89  
 (PHASE 1-PRESS TELEGRAM AND MEEKER-BAKER)

237 SPACES REQUIRED FOR MEEKER-BAKER BUILDING  
 • 2 CARB/1000SF PER DOWNTOWN PLAN  
 • PRESS TELEGRAM BUILDING IS EXEMPT

214 PARKING SPACES PROVIDED ON SITE  
 • 148 STANDARD STALLS  
 • 6 DISABLED  
 • 60 TANDEM\*

\* TANDEM SPACES WILL REQUIRE A VARIANCE FROM THE CITY OF LONG BEACH

A-1



A-2

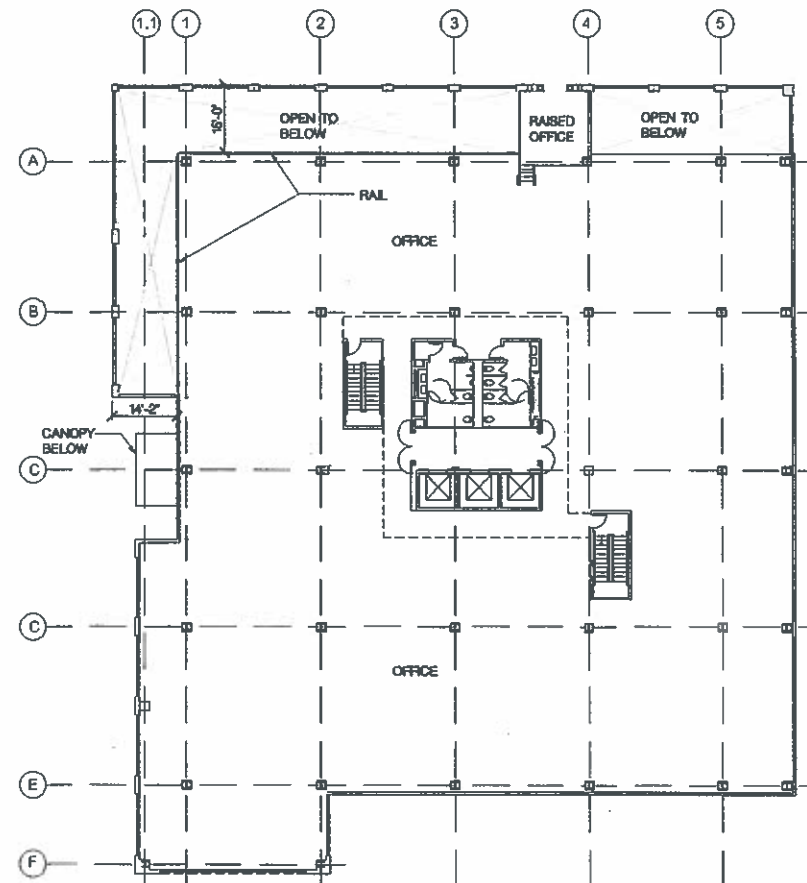
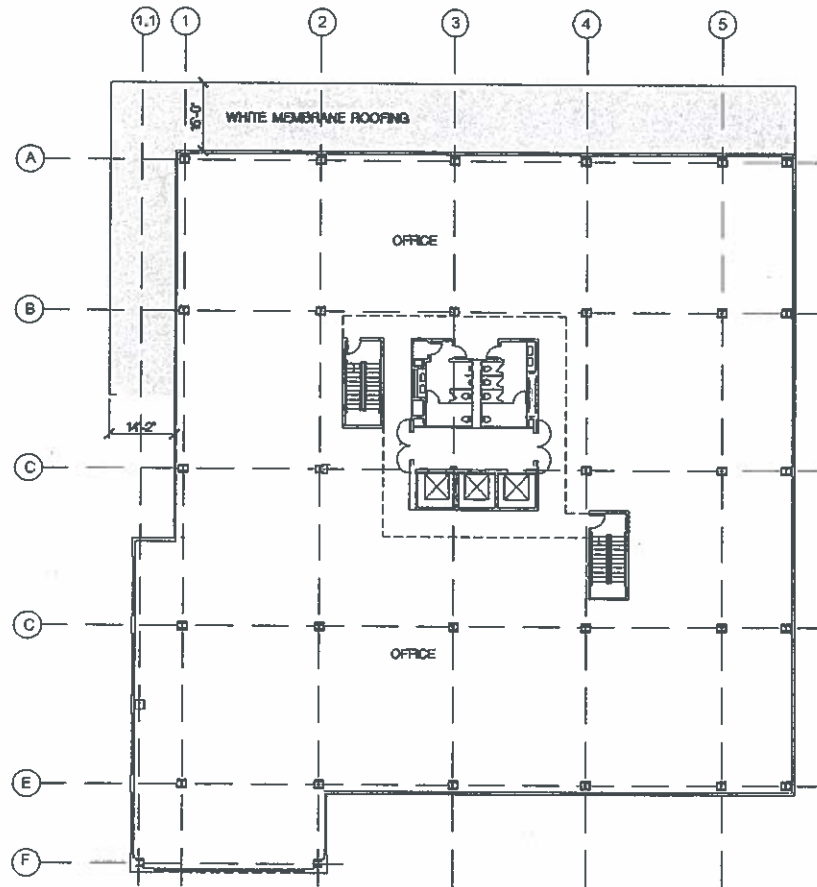
12044 - 06.06.2012

1st Floor SCALE: 1/16"=1'-0" 1

Meeker Baker

7th & Pine  
Long Beach, California





A-3

12044 - 06.05.2012

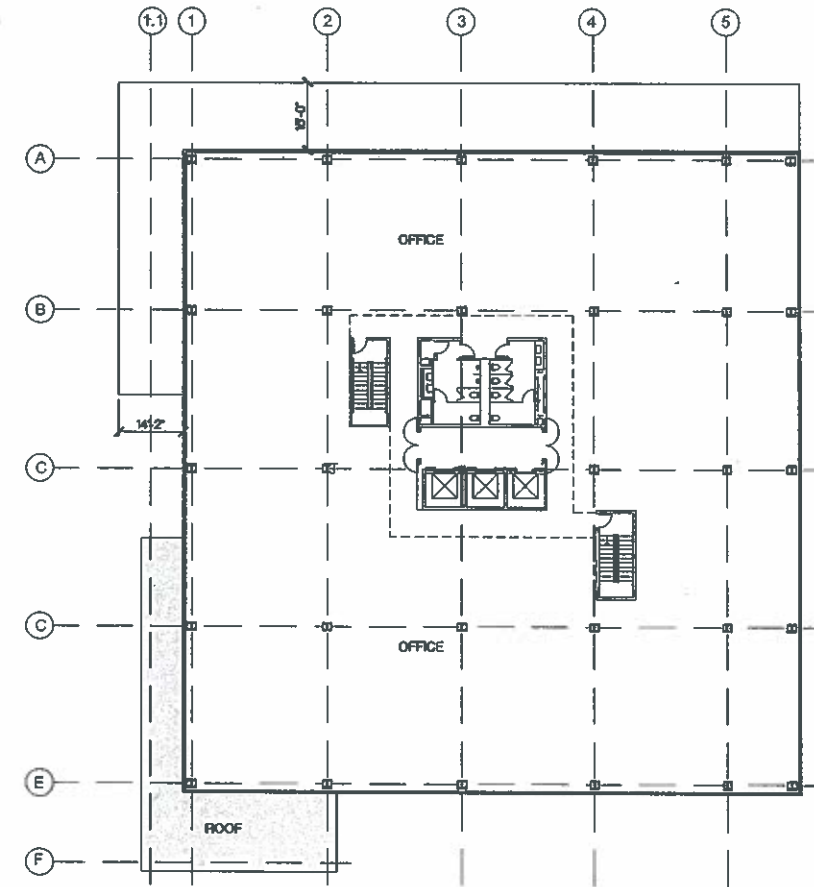
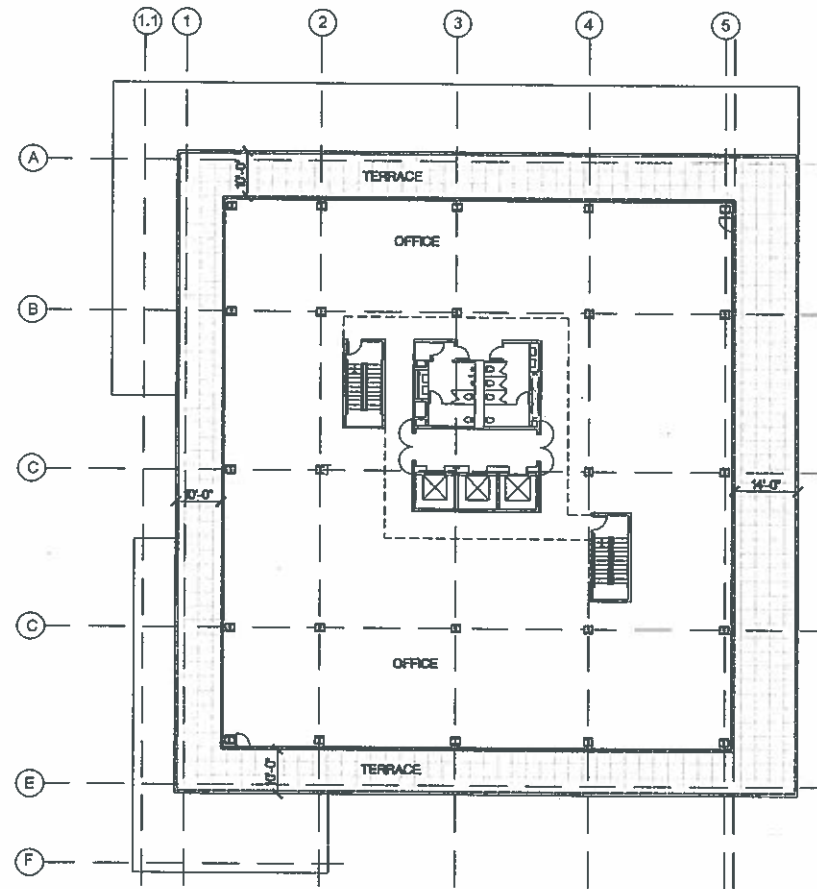
3rd / 4th Floor SCALE: 1/16"=1'-0" 2

2nd Floor SCALE: 1/16"=1'-0" 1

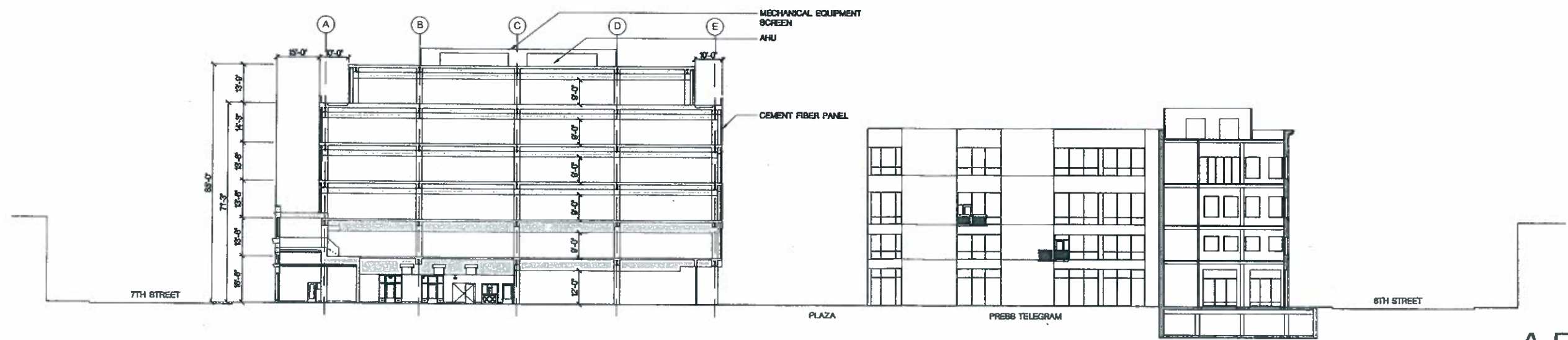
Meeker Baker

7th & Pine  
Long Beach, California





A-4



0 18' 36' 48'  
 NORTH/SOUTH SECTION SCALE: 1/16"=1'-0" 1

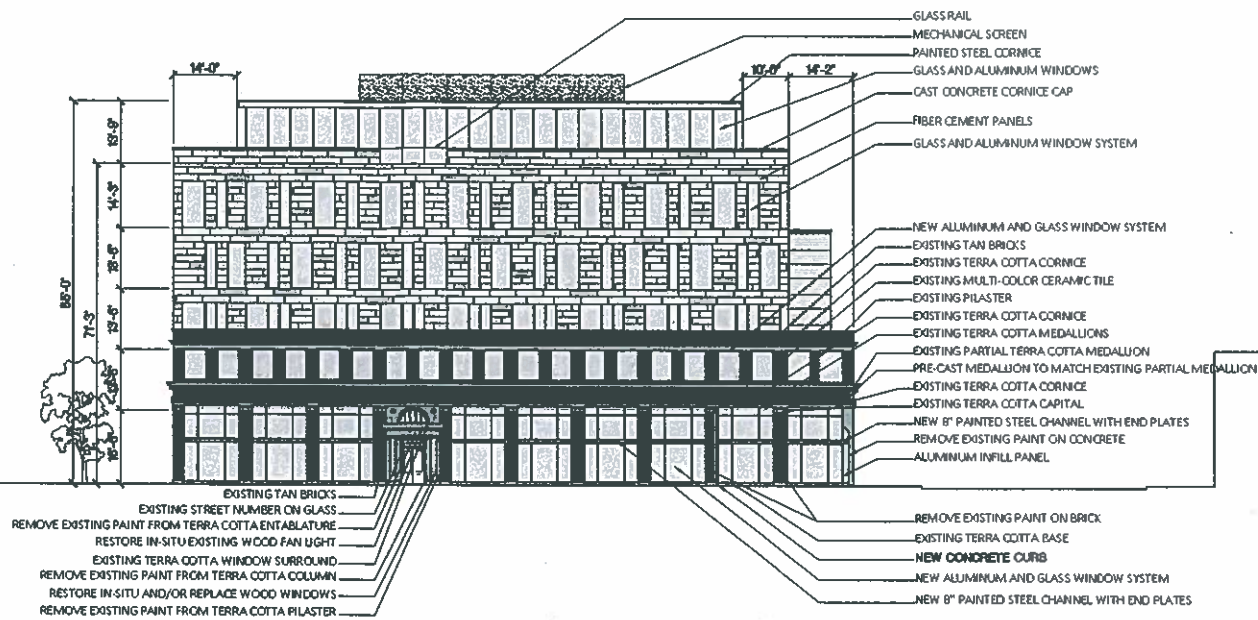
A-5

12044 - 06.06.2012

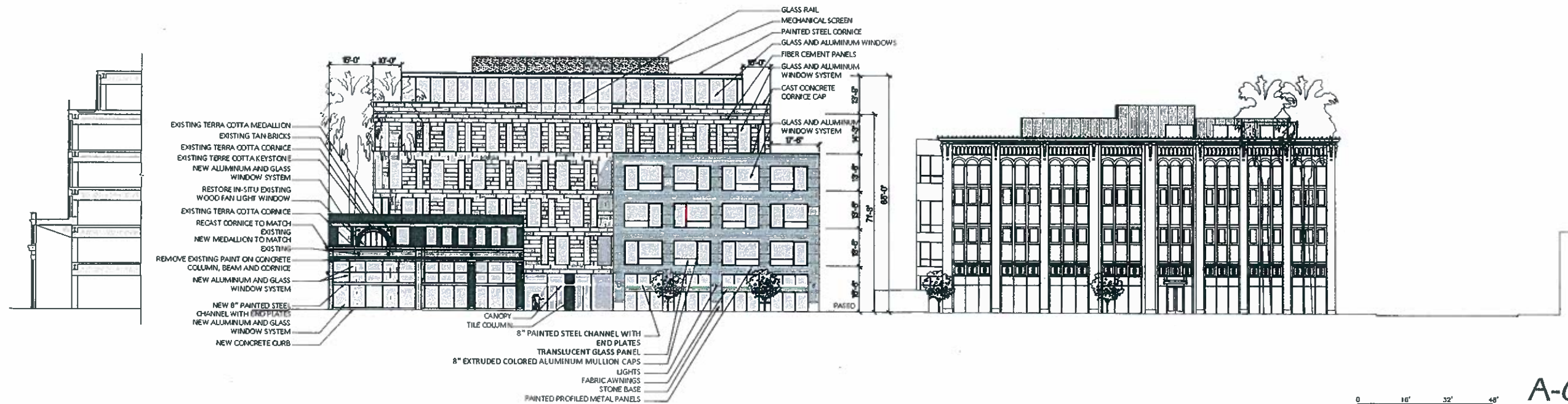
Meeker Baker

7th & Pine  
 Long Beach, California





0 16 32 48  
**NORTH ELEVATION** SCALE: 1/16"=1'-0" 2



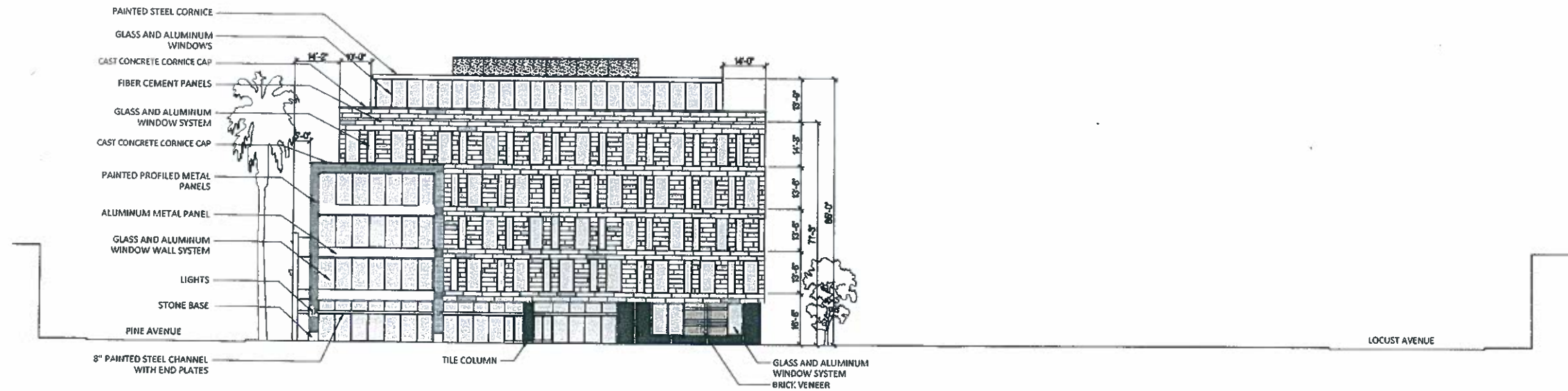
0 16 32 48  
**WEST ELEVATION** SCALE: 1/16"=1'-0" 1

12044 - 06.06.2012

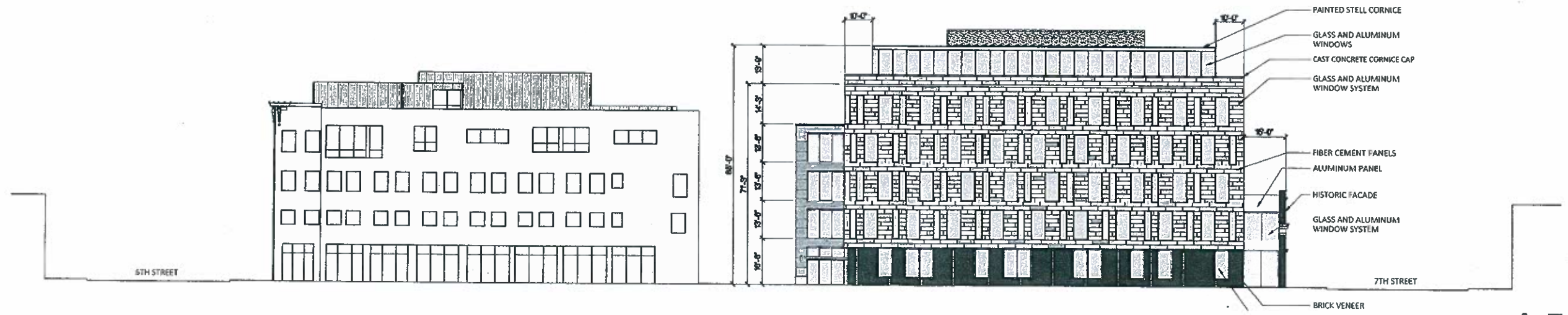
Meeker Baker

7th & Pine  
 Long Beach, California





0 18' 32' 48'  
**SOUTH ELEVATION** SCALE: 1/16"=1'-0" 2



0 18' 32' 48' **A-7**  
**EAST ELEVATION** SCALE: 1/16"=1'-0" 1

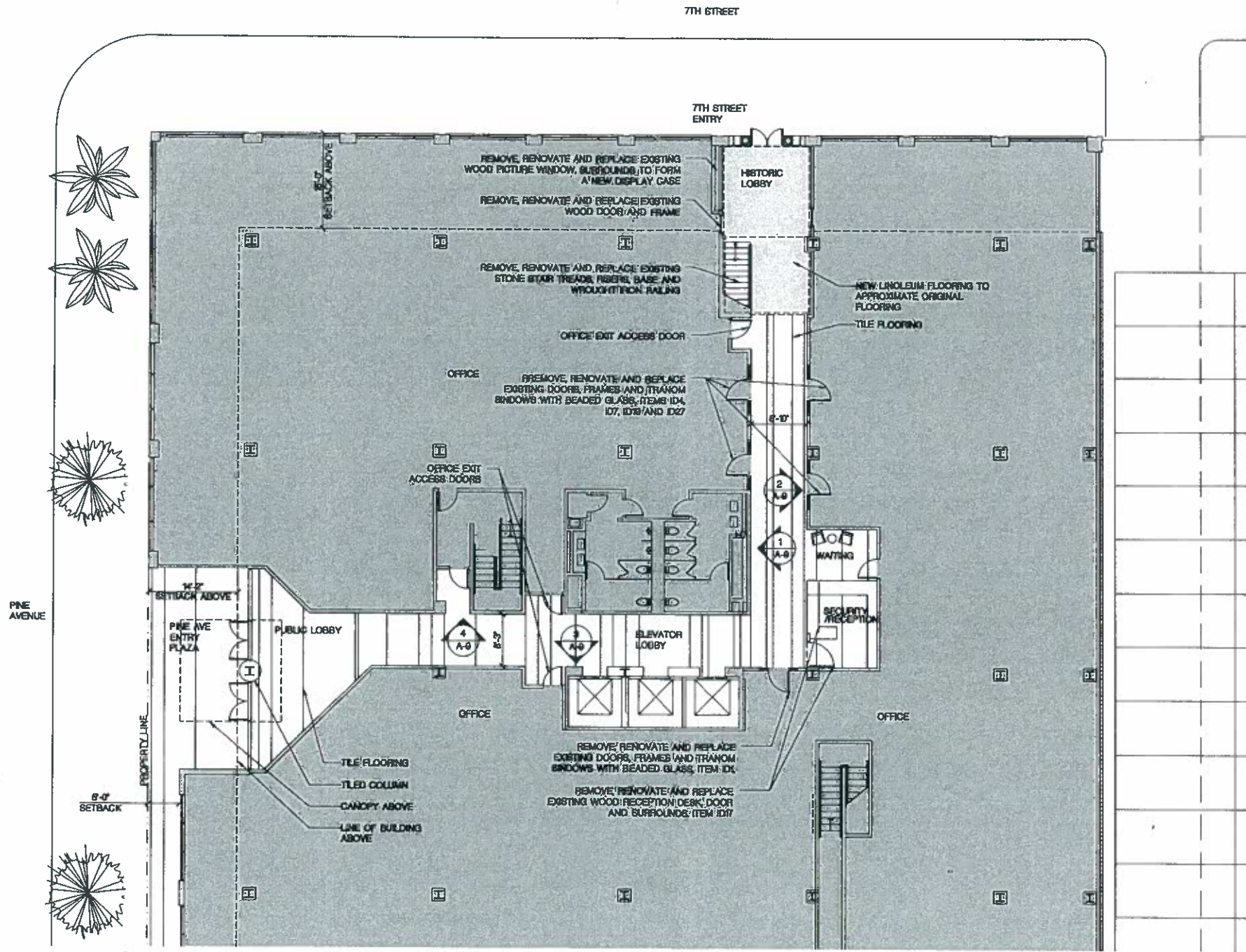
12044 - 06.06.2012

Meeker Baker

7th & Pine  
 Long Beach, California







0 8' 16' 24'

**A-8**

LOBBY ENLARGED PLAN

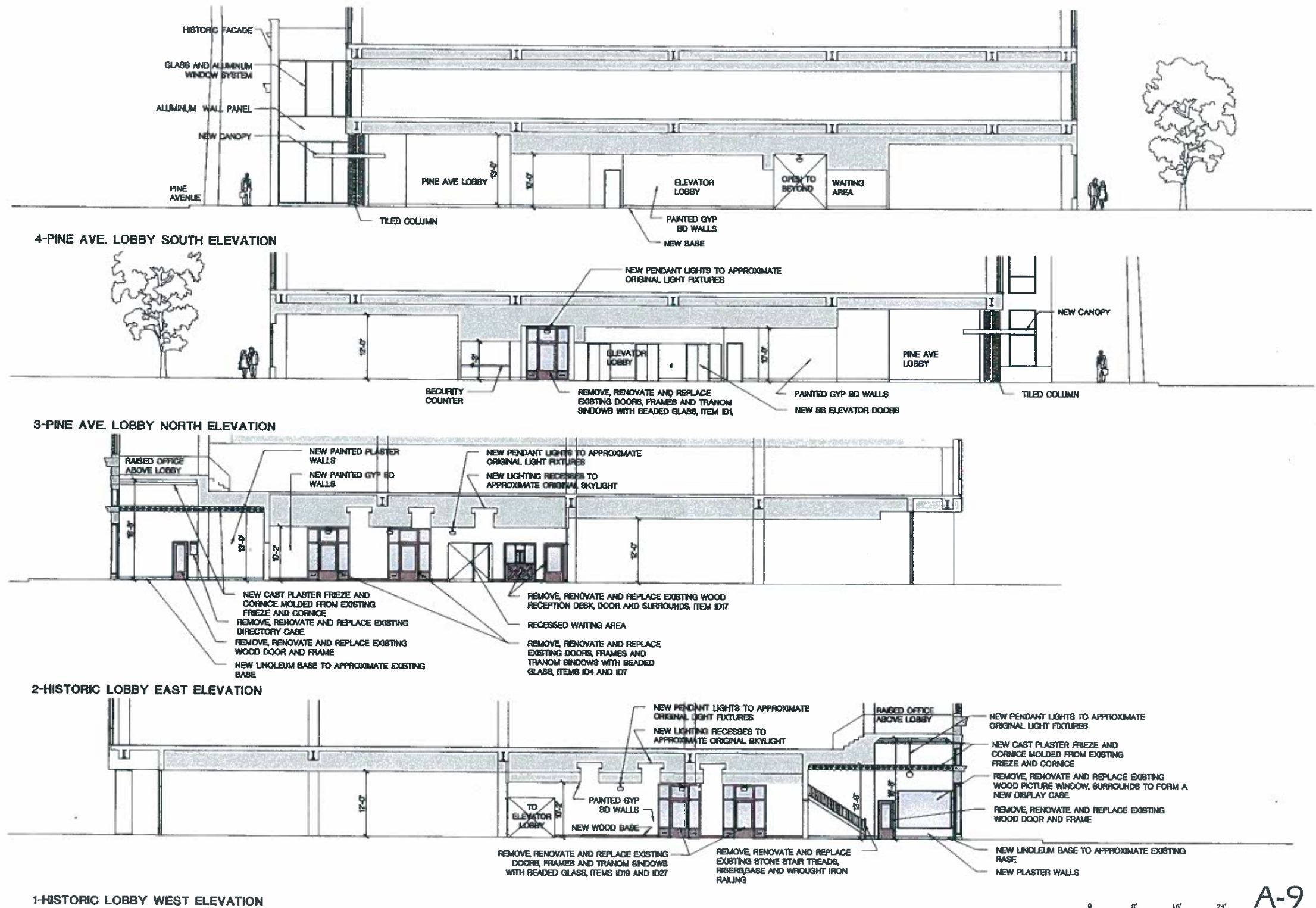
SCALE:	1
1/8" = 1'-0"	

12044 - 06.06.2012

Meeker Baker

7th & Pine  
Long Beach, California





12044 - 06.06.2012

INTERIOR LOBBY ELEVATIONS

A-9

SCALE: 1/8"=1'-0" 1

Meeker Baker

7th & Pine  
Long Beach, California







STREET VIEW AT 7TH AND PINE

3D VIEW A-10

12044 - 06.06.2012

Meeker Baker

7th & Pine  
Long Beach, California







STREET VIEW ACROSS PINE

3D VIEWS A-11

12044 - 06.06.2012

Meeker Baker

7th & Pine  
Long Beach, California

