

Los Angeles County
Metropolitan Transportation Authority

Air Quality Action Plan for Gateway Cities

Project Update
Presented to the Long Beach I-710 Oversight
Committee

June 14, 2011

 GATEWAY CITIES
FOR SOUTHERN CALIFORNIA

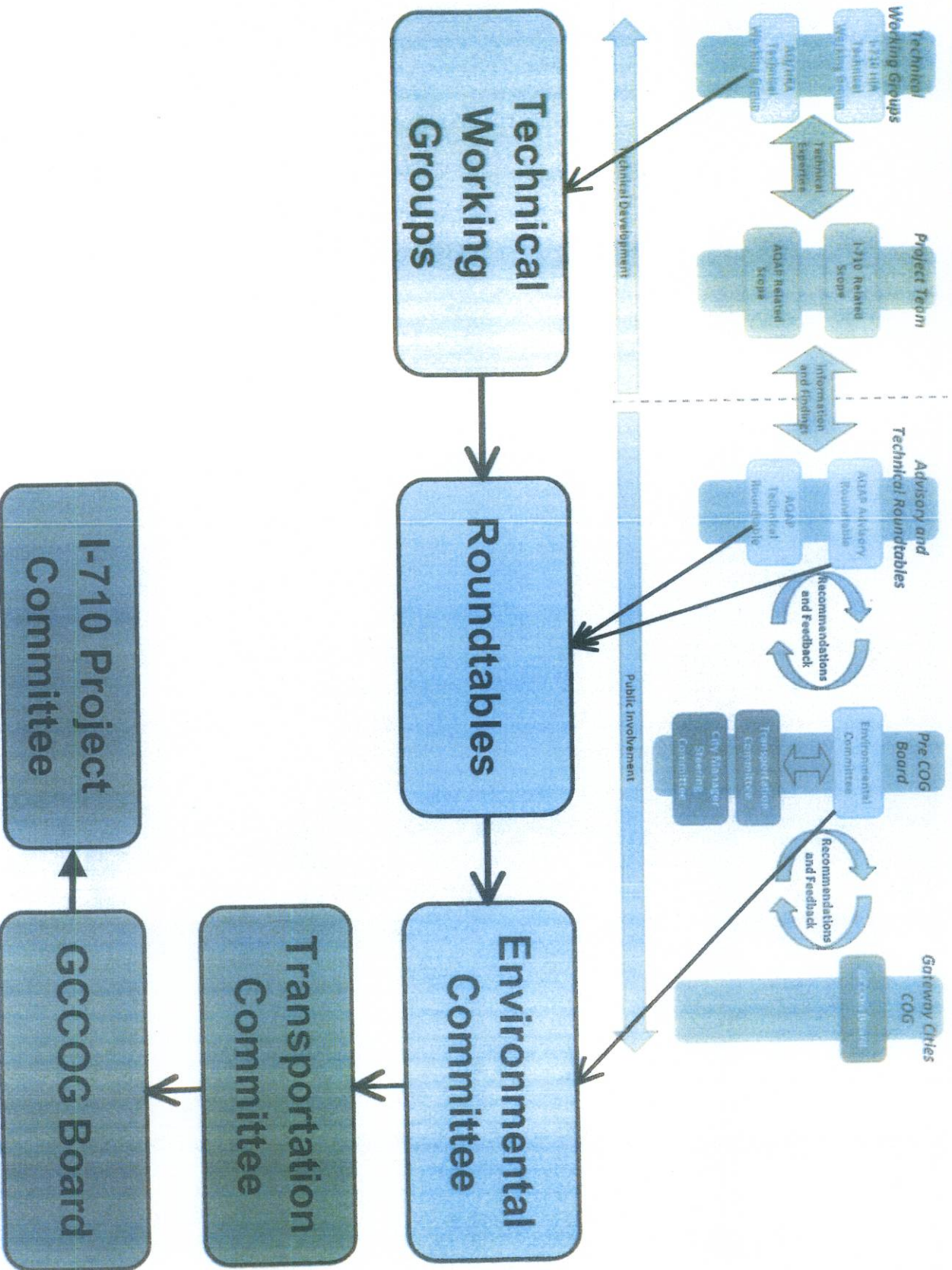
Made possible with support from
 Metro

 ICF
INTERNATIONAL

Presentation Outline

- General Activities
- Task Update
- Upcoming Activities
- Project Schedule
- Questions and Comments

General Activities - Participation Framework



Task Update

Technical Tasks	Status
Task 2 – Comm. Medical Needs, Near Roadway Modeling, AQ Protocol, Compendium Update,	In Process
Task 3 – Quantitative AQ Analysis	In Process
Task 4 – Health Impact Assessment	In Process
Task 5 – Health Risk Assessment	In Process
Task 6 – Develop AQ Strategies	In Process
Task 7 – Develop New AQ Measures	Task start in September
Task 8 – Early Action Support	Task start in September
Task 9 – Develop AQAP Report	Task start in April 2012
Task 10 – Public Outreach	In Process

Task Update (May – June) cont.

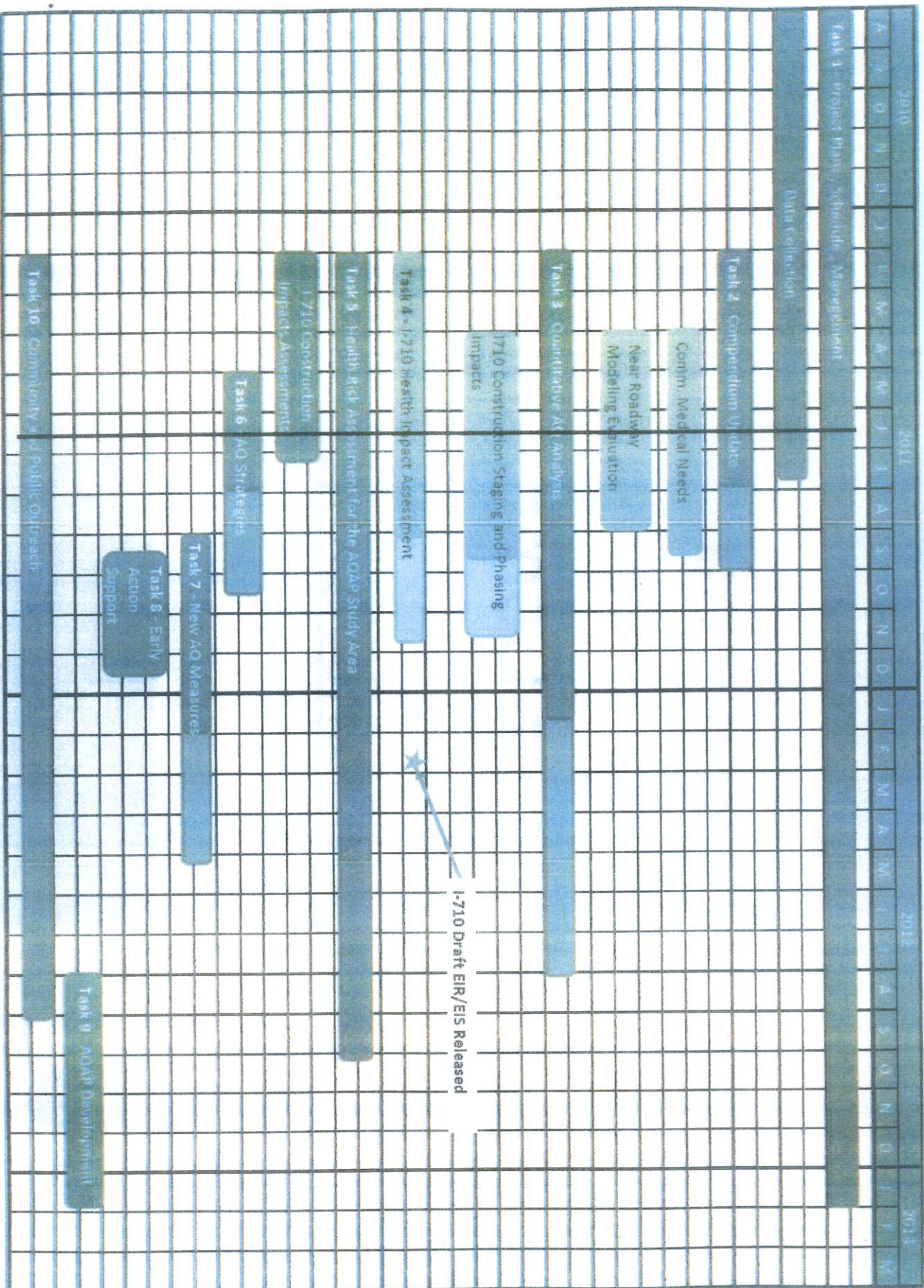
Task 2

- Community Medical Needs Assessment
 - Draft scope prepared, data collection underway
- Near Roadway Modeling Assessment
 - Data Analysis plan submitted
 - Data gathered from SCAQMD and USC
 - Acquired meteorological data from SCAQMD

Upcoming Activities (June – September)

- All scheduled tasks are ongoing. Many documents will be going through the participation framework (roundtables, etc.)
- Compendium Update
- AQ/HRA Protocol
- HIA Scope of Work
- Community Medical Needs Assessment
- Near Roadway Modeling
- Ultrafines
- I-710 Construction Staging and Phasing

Project Schedule



Thank You

Questions or Comments

www.metro.net/gcaqap



GATEWAY CITIES
COUNCIL OF GOVERNMENTS

Made possible with support from



Metro

