



CITY OF LONG BEACH

DEPARTMENT OF PARKS, RECREATION & MARINE

C-12

2760 N. Studebaker Road, Long Beach, CA 90815-1697

(562) 570-3100 • FAX (562) 570-3109

www.lbparcs.org

October 17, 2006

HONORABLE MAYOR AND CITY COUNCIL
City of Long Beach
California

RECOMMENDATION:

Authorize the City Manager to execute a right of entry permit with Partners of Parks, a non-profit organization, to allow access to construct a playground at Orizaba Park on December 16, 2006. (District 4)

DISCUSSION

Partners of Parks recently submitted a grant application to KaBOOM!, a non-profit organization based in Washington, D.C., to replace the old play equipment at Orizaba Park. KaBOOM!, whose mission is to provide a great place to play within walking distance of every child in America, teams up with their national funding partners and local community organizations to build playgrounds. These playgrounds are built by the community, as KaBOOM! believes that the experience of organizing and creating a community-built play space is as important as the play space itself. As such, they partner with community organizations instead of with public agencies. The local community will be involved in the planning and organization of the build day activity, as well as the actual construction of the playground. Attached are photos of the playground recently built by KaBOOM! at 14th Street Park (Attachment A).

The playground at Orizaba Park is well used and the equipment is among the oldest in the City. There are over 11,000 children within a half-mile radius of Orizaba Park who have easy access to only this playground. New play equipment at this location will provide a safe, exciting, and interesting place to play for the neighborhood children.

The community-built playground will be a collaboration between Partners of Parks, the Department of Parks, Recreation and Marine (PRM), the Community Development Department, and the West Eastside Community Association surrounding Orizaba Park.

One of the requirements of the KaBOOM! grant application is that the community partner (Partners of Parks) must demonstrate ownership of the property where the playground is to be constructed or authority from the property owner (City of Long Beach) to build a playground at the site. An agreement between the City and Partners of Parks is required to authorize the construction of the playground on City property. If approved, the agreement would include the terms on the following page.

HONORABLE MAYOR AND CITY COUNCIL

October 17, 2006

Page 2

- Location: Existing playground at Orizaba Park (Attachment B).
- Term: One community build day on December 16, 2006.
- Volunteers: All volunteers organized by Partners of Parks shall complete City volunteer applications and sign City Volunteer Waiver forms, as required by the City's Risk Manager.
- Play Equipment and Play Surfacing: All material and equipment for the playground shall be approved by PRM prior to the community build day.
- Maintenance: Upon completion of the new playground, PRM will maintain the playground and equipment.

This matter was reviewed by Senior Deputy City Attorney Donna F. Gwin on October 4, 2006, and Acting Budget Officer Greg Sorensen on October 4, 2006.

TIMING CONSIDERATIONS

City Council action is requested on October 17, 2006, to enable the KaBOOM! community build day to occur at Orizaba Park on December 16, 2006.

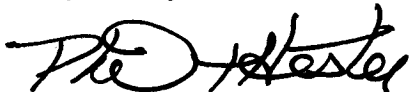
FISCAL IMPACT

The City will be the beneficiary of the donated playground equipment and volunteer services. The Department will not incur any additional expenses with the maintenance of the playground and equipment. There will be no cost to the City.

SUGGESTED ACTION:

Approve recommendation.

Respectfully submitted,



PHIL T. HESTER
DIRECTOR OF PARKS, RECREATION AND MARINE

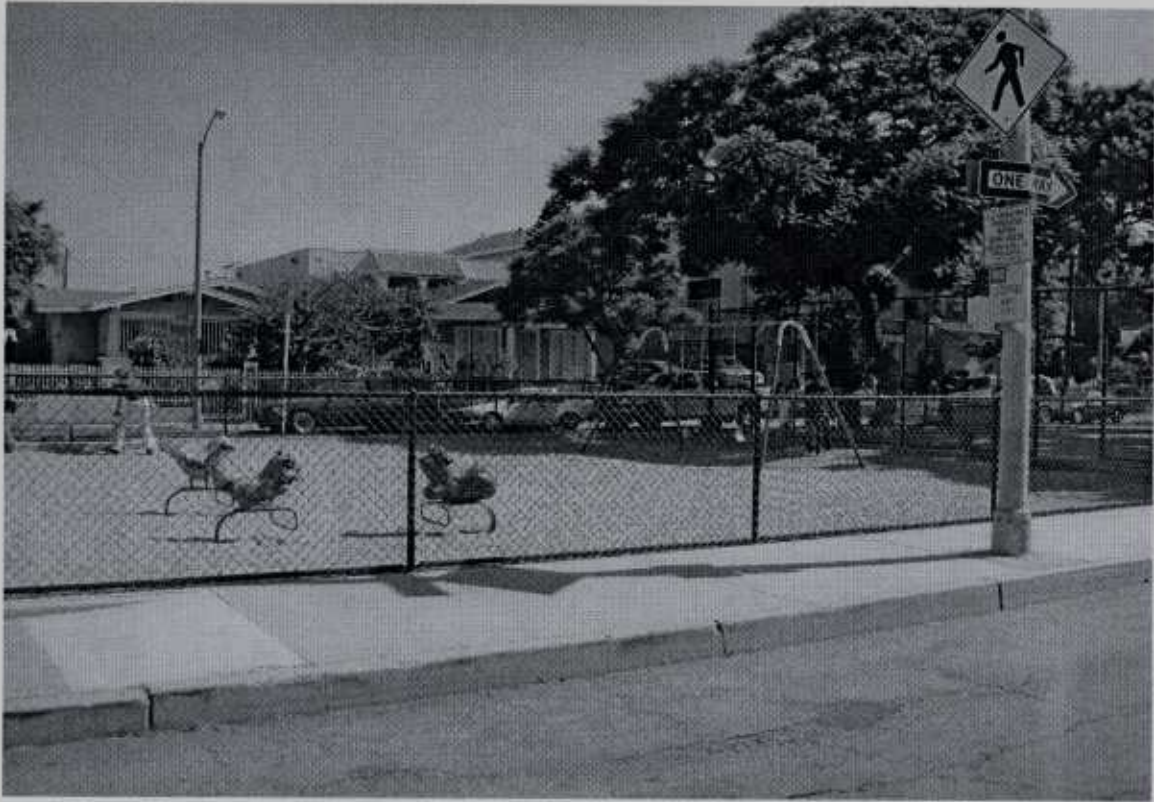
PTH:AMM:jca

Attachments

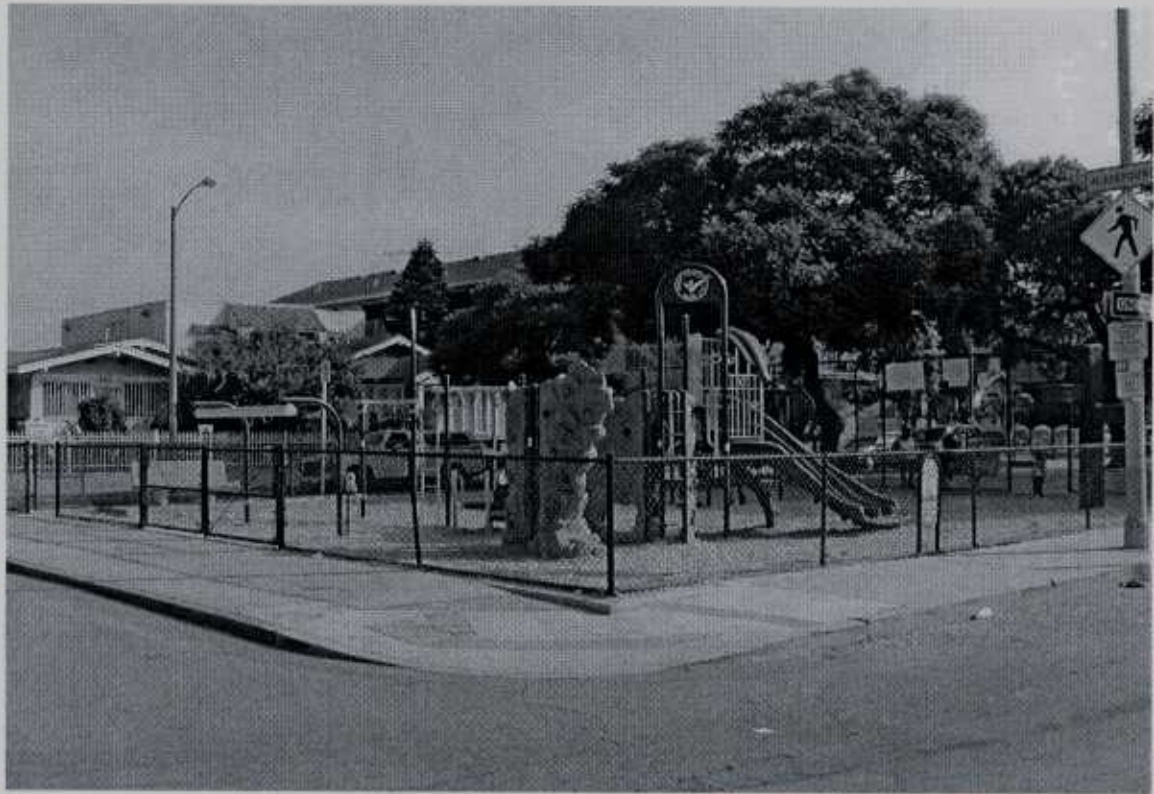
APPROVED:



GERALD R. MILLER
CITY MANAGER



14th Street Park Playground Before KaBOOM



14th Street Park Playground After KaBOOM

Attachment B

