

## Airport Advisory Commission

**Phyllis Ortman**  
Chair

**Roland B. Scott, Jr.**  
Vice Chair

**Bruce Alton**

**Elizabeth Cruz**

**Hal Gosling**

**Bob Luskin**

**Gerald Mineghino**

**Karen Sherman**

**Carol Soccio**



**LONG BEACH  
AIRPORT**

Building a Better Way to Fly



## Airport Management

**Mario Rodriguez**  
Airport Director

**Ken Mason**  
Executive Assistant

**Carolyn Carlton-Lowe**  
Operations & Facilities  
Bureau Manager

**JC Squires**  
Manager, Finance  
& Administration

**Claudia Lewis**  
Administrative Officer

**Nancy Trent**  
Facilities Management Officer

**Fred Peña**  
Airside Operations Superintendent

**Mario Fabila**  
Noise Compliance Officer

**John Blood**  
Chief of Security

**Kerry Gerot**  
Public Affairs Officer



# Long Beach Airport Monthly Noise Report September 2011

**COMMERCIAL AIRCRAFT LATE NIGHT ACTIVITY**  
**LGB Current Month & Calendar Year-To-Date Statistics (10 PM- 7AM)**  
**September 2011**

September				CY-T-D 2011		
10PM - 11PM Activity	2011	2010	Change	2011	2010	Change
<b>(August Data)</b>						
<b>Air Carrier &amp; Commuter Operations</b>	<b>2,674</b>	<b>2,544</b>	<b>5.1%</b>	<b>19,121</b>	<b>19,326</b>	<b>-1.1%</b>
(September Data)						
Alaska / Horizon	0	0		2	0	200.0%
Allegiant	1	0	200.0%	8	0	800.0%
Delta / Skywest	2	0	200.0%	11	3	266.7%
FedEx	0	0		0	0	
Frontier	0	0		1	1	0.0%
JetBlue	20	25	-20.0%	261	277	-4.4%
UPS	0	0		0	3	-100.0%
US Airways	0	0		19	7	171.4%
<b>Subtotal 10PM-11PM</b>	<b>23</b>	<b>25</b>	<b>-8.0%</b>	<b>302</b>	<b>291</b>	<b>3.8%</b>
11PM- 7AM Activity	2011	2010	Change	2011	2010	Change
Alaska / Horizon	0	0		0	0	
Allegiant	0	0		10	0	1000.0%
Delta / Skywest	0	0		0	0	
FedEx	0	0		0	0	
Frontier	0	0		1	1	0.0%
JetBlue	4	9	-55.6%	95	90	5.6%
UPS	0	0		0	1	
US Airways	1	0	100.0%	6	1	500.4%
<b>Subtotal 11PM-7AM</b>	<b>5</b>	<b>9</b>	<b>-44.4%</b>	<b>112</b>	<b>84</b>	<b>20.4%</b>
<b>TOTAL</b>	<b>28</b>	<b>34</b>	<b>-17.9%</b>	<b>414</b>	<b>350</b>	<b>7.8%</b>

**NOTES:**

- 2.4% (64 of 2,674) of total commercial operations occurred between 10pm - 7am.
- 2.1 flights - Nightly average for all late night commercial flights, includes unanticipated delays.
- 0.61 flights - Nightly average for commercial flights after 11 PM.

# AIRPORT OPERATIONS & AIRCRAFT NOISE VIOLATIONS

## LGB Current Month & Calendar Year-To-Date Statistics

### September 2011

September				CY-T-D 2011		
Air Carrier Noise Violations	2011	2010	Change	2011	2010	Change
Allegiant	0	0		11	0	100.0%
FedEx	0	0		0	0	
Frontier	0	0		0	0	
JetBlue	9	12		132	134	
UPS	0	1		0	6	
US Airways	0	0		2	1	100.0%
<b>Subtotal</b>	<b>9</b>	<b>13</b>		<b>145</b>	<b>142</b>	<b>2.1%</b>
Commuter Noise Violations	2011	2010	Change	2011	2010	Change
Alaska / Horizon	-	-		-	-	
Delta / Skywest	-	-		-	-	
US Airways	-	-		-	-	
<b>Subtotal</b>	<b>0</b>	<b>0</b>		<b>0</b>	<b>0</b>	
Non-Commercial Noise Violations	2011	2010	Change	2011	2010	Change
All GA, Charter & Other	14	15	-6.7%	120	138	-13.0%
<b>TOTAL</b>	<b>23</b>	<b>28</b>	<b>-17.9%</b>	<b>265</b>	<b>280</b>	<b>-5.4%</b>
Monetary Fines						
LBMC 16.43.090E Airport Surcharges	\$2,400	\$2,800		\$24,400	\$23,500	
LBMC 16.43.100 JBU Consent Decree	\$24,000	\$42,000		\$462,000	\$438,000	
<b>TOTAL</b>	<b>\$26,400</b>	<b>\$44,800</b>		<b>\$486,000</b>	<b>\$461,500</b>	
August Airport Operations (FAA)	2011	2010	Change	2011	2010	Change
Air Carrier + Commuter Carriers	2,674	2,544	5.1%	11,249	11,876	-5.3%
Air Taxi + General Aviation	25,971	27,669	-6.1%	117,907	118,348	-0.4%
Military Operations	66	71	7.0%	307	440	-30.2%
<b>Total Aircraft Operations</b>	<b>28,711</b>	<b>30,284</b>	<b>-5.2%</b>	<b>207,294</b>	<b>218,294</b>	<b>-4.9%</b>

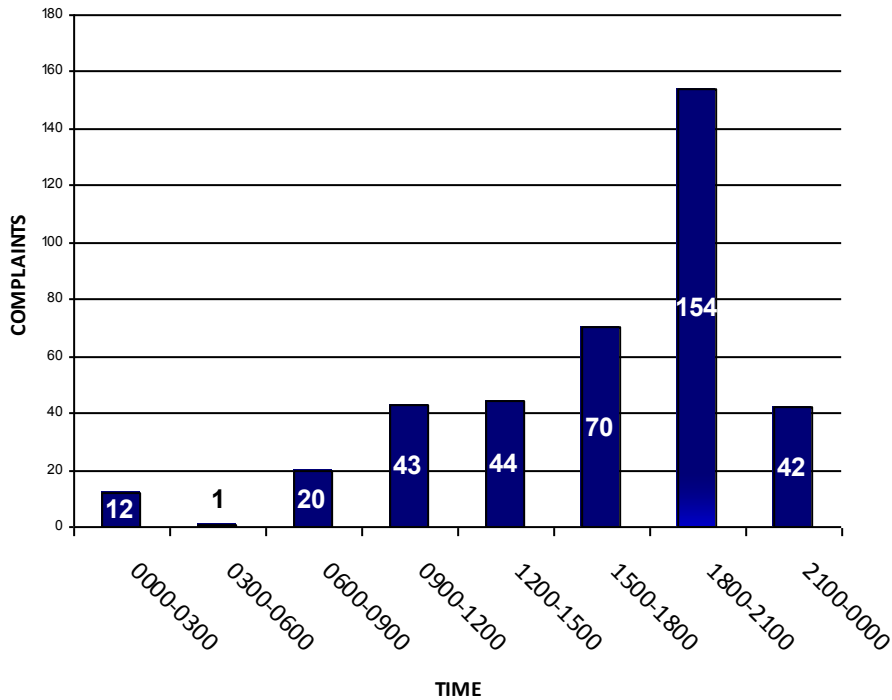
#### NOTES:

- 0.1% (39 of 28,711) of the Airport's total aircraft operations (Commercial & GA) resulted in an aircraft noise violation.
- 1.0% (27 of 2,674) of the Airport's Commercial operations (Commercial & Commuter) resulted in an aircraft noise violation.
- 21.8% (44 of the 201) of JetBlue's violations for YTD 2011 can be attributed to activity between 10 PM - 11PM. This activity did not meet the criteria for Unanticipated Delay, and therefore a LBMC 16.43 violation of \$300 was issued for each occurrence.

# September 2011

## LGB AIRCRAFT NOISE COMPLAINTS

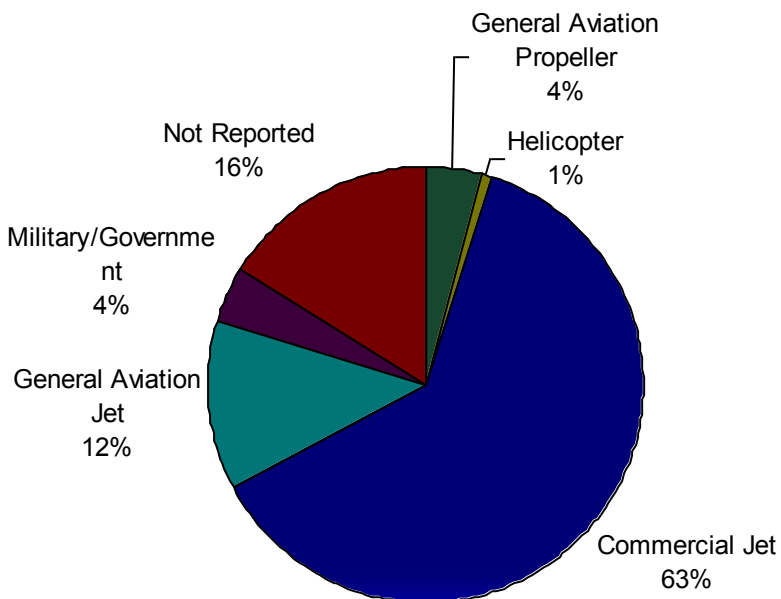
### Complaints per Hour



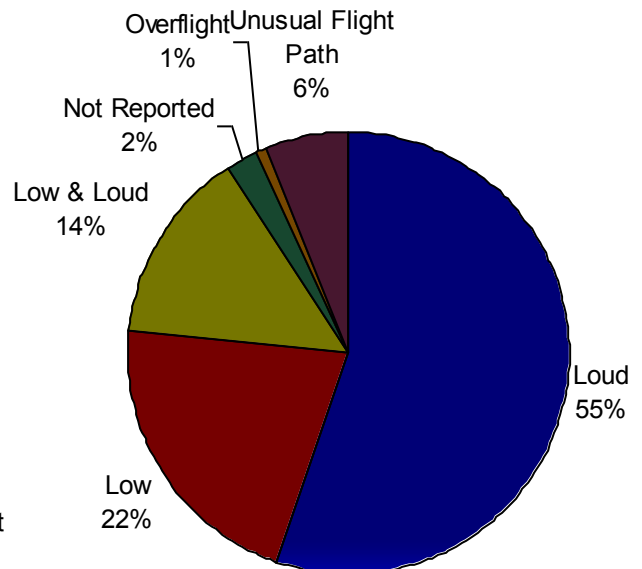
### Complaints By Zip Code

90720	1
90740	32
90805	3
90807	21
90808	4
90815	11
92626	225
92646	1
92647	6
92649	5
92780	1
97040	4
97055	1
Not Reported	71
<b>Grand Total</b>	<b>386</b>

### Complaints by Type of Aircraft



### Complaints by Type of Concern



## September 2011

OWNER NAME	DATE	TIME	A/D	RWY	A/C TYPE	NMTID	SEL	LIMIT	STATUS
Golden Eagle Flyers, LLC	9/1/2011	11:53:30 AM	A	25R	421B	1	90.4	88.0	VIOLATION
Chieftain Development Enterprises LLC	9/2/2011	12:52:13 AM	A	30	PA-31T	10	84.2	79.0	VIOLATION
Metrojet Ltd.	9/2/2011	2:00:48 AM	D	30	G-IV	9	87.9	79.0	VIOLATION
JetBlue Airways Corporation	9/4/2011	10:40:43 PM	D	30	A320	9	93.6	90.0	VIOLATION
JetBlue Airways Corporation	9/4/2011	11:09:38 PM	A	30	A320	10	92.9	79.0	ALT ENF & VIO
JetBlue Airways Corporation	9/5/2011	10:47:24 PM	D	30	A320	9	95.9	90.0	VIOLATION
AvantAir Inc.	9/6/2011	3:25:59 PM	A	25R	P180	1	94.8	88.0	VIOLATION
JetBlue Airways Corporation	9/6/2011	11:12:38 PM	A	30	A320	10	93.1	79.0	ALT ENF & VIO
JetBlue Airways Corporation	9/8/2011	11:43:12 PM	D	30	A320	9	92.1	79.0	ALT ENF & VIO
JetBlue Airways Corporation	9/9/2011	12:27:37 AM	D	25R	A320	6	101.7	79.0	ALT ENF & VIO
JetBlue Airways Corporation	9/9/2011	10:21:14 PM	D	30	A320	9	95.0	90.0	VIOLATION
JetBlue Airways Corporation	9/9/2011	10:34:52 PM	D	30	A320	9	96.4	90.0	VIOLATION
Diamond Capital Investments Co. Ltd	9/10/2011	5:05:58 AM	A	30	GIV-X	10	89.0	79.0	VIOLATION
Embee Inc	9/10/2011	11:44:40 PM	D	12	FA20	10	81.3	79.0	VIOLATION
Pelican Development G-IV LLC	9/14/2011	11:10:40 PM	D	30	GLF4	9	85.6	79.0	VIOLATION
JetBlue Airways Corporation	9/16/2011	10:07:45 PM	A	30	A320	10	92.9	90.0	VIOLATION
Entrepreneurial Asset Management	9/17/2011	12:31:38 AM	A	30	GLF3	10	89.8	79.0	VIOLATION
Paradigm Air Carriers Inc.	9/20/2011	4:29:50 PM	D	30	B727-223	9	107.6	102.5	VIOLATION
Tyson Foods Inc.	9/21/2011	6:18:40 AM	D	30	FA50	9	93.2	90.0	VIOLATION
Gorilla Aviation LLC	9/24/2011	5:28:46 PM	D	30	LJ28	9	105.6	102.5	VIOLATION
Amerijet International	9/26/2011	11:05:35 AM	D	30	B722	9	108.5	102.5	VIOLATION
Aero World Aviation LLC	9/30/2011	2:20:53 AM	A	30	H25B	10	94.8	79.0	VIOLATION
Meisner Aircraft Inc.	9/30/2011	11:10:28 PM	D	30	ASTRA SPX	9	91.1	79.0	VIOLATION

### DEFINITIONS:

**A/D** — Arrival and Departure

**RWY** — Runway

**A/C Type** — Aircraft Type

**SEL** — SENEL — Single Event Noise Equivalent Level

**ALT ENF** — Alternative Enforcement

**NMTID** — Noise Monitor



# LONG BEACH AIRPORT

Building a Better Way to Fly



## Long Beach Airport

4100 E. Donald Douglas Drive, Long Beach, CA 90808

[www.lgb.org](http://www.lgb.org) • [lgbapt@longbeach.gov](mailto:lgbapt@longbeach.gov)

Administration • (562) 570-2619