

1 MEMORANDUM OF UNDERSTANDING

2 **30312**

3 THIS MEMORANDUM OF UNDERSTANDING (this "MOU") is made and
4 entered, in duplicate, as of October 23, 2007 for reference purposes only, pursuant to a
5 minute order adopted by the City Council of the City of Long Beach at its meeting on
6 October 9, 2007, by and between the AQUARIUM OF THE PACIFIC, a California
7 nonprofit organization, with a place of business at 100 Aquarium Way, Long Beach,
8 California 90802 ("Aquarium"), and the CITY OF LONG BEACH, a municipal corporation
9 ("City").

10 WHEREAS, City currently possess certain pieces of artwork comprising the
11 exhibit entitled "From Sea to Shining Sea: 200 Years of Charting America's Coasts" (the
12 "Artwork") on loan from the Smithsonian Institution; and

13 WHEREAS, Aquarium desires to display the Artwork at its facility and City
14 has agreed to allow Aquarium to display the Artwork pursuant to the terms and conditions
15 in this MOU.

16 NOW, THEREFORE, in consideration of the mutual terms, covenants, and
17 conditions in this MOU, the parties agree as follows:

18 1. ARTWORK. City hereby agrees to loan to Aquarium the Artwork
19 described on Exhibit "A", attached to this MOU and incorporated by this reference, for
20 display at Aquarium's facility.

21 2. TERM AND TERMINATION. The term of this MOU shall commence
22 at midnight on October 4, 2007, and shall terminate at 11:59 p.m. on December 7, 2007,
23 unless sooner terminated as provided in this MOU. City reserves the right to demand
24 delivery of the Artwork at any time during the term of this MOU upon giving Aquarium
25 thirty (30) days' written notice, in which event this MOU shall terminate when the Artwork
26 has been redelivered to City as provided in Section 3 below.

27 3. DELIVERY AND REDELIVERY OF ARTWORK. On commencement
28 of this MOU, City shall arrange for delivery of the Artwork to Aquarium. On termination or

OFFICE OF THE CITY ATTORNEY
ROBERT E. SHANNON, City Attorney
333 West Ocean Boulevard, 11th Floor
Long Beach, CA 90802-4664

1 expiration of this MOU, Aquarium shall redeliver the Artwork to City at 333 West Ocean
2 Boulevard, Long Beach, California 90802, Attn: City Manager, or such other address as
3 may be designated by City's City Manager or his designee. City shall pay all costs of
4 delivery and Aquarium shall pay all costs of redelivery of the Artwork.

5 4. EXHIBITION GUIDELINES. Aquarium acknowledges receipt of the
6 "From Sea to Shining Sea: 200 Years of Charting America's Coasts" Exhibitor
7 Handbook, attached to this MOU as Exhibit "B" and incorporated by this reference, and
8 agrees to abide by all of the provisions therein.

9 5. MAINTENANCE AND REPAIR. Aquarium, at its cost, shall provide a
10 suitable public display of the Artwork at such locations as may be approved in writing by
11 City's City Manager or his designee. In addition, Aquarium shall exercise due care for
12 the safekeeping, maintenance and repair of the Artwork so that it shall not be damaged,
13 lost or stolen. In no event shall Aquarium exercise a degree of care less than that degree
14 of care it would exercise over its own property.

15 6. INSURANCE.

16 A. As a condition precedent to the effectiveness of this MOU, Aquarium
17 shall procure and maintain, at Aquarium's expense for the duration of this MOU, from
18 insurance companies that are admitted to write insurance in California and have ratings
19 of or equivalent to A:V by A.M. Best Company or from authorized non-admitted insurance
20 companies subject to Section 1763 of the California Insurance Code and that have
21 ratings of or equivalent to A:VIII by A.M. Best Company, commercial general liability
22 insurance (equivalent in scope to ISO form CG 00 01 11 85 or CG 00 01 10 93) in an
23 amount not less than \$1,000,000 per each occurrence and \$2,000,000 general
24 aggregate. This coverage shall include but not be limited to broad form contractual
25 liability, cross liability, independent contractors liability, and products and completed
26 operations liability. City, its boards and commissions, and their officials, employees and
27 agents shall be named as additional insureds by endorsement (on City's endorsement
28 form or on an endorsement equivalent in scope to ISO form CG 20 10 11 85 or CG 20 26

1 11 85), and this insurance shall contain no special limitations on the scope of protection
2 given to City, its boards and commissions, and their officials, employees and agents.
3 This policy shall be endorsed to state that the insurer waives its right of subrogation
4 against City, its boards and commissions, and their officials, employees and agents.

5 B. Any self-insurance program, self-insured retention, or deductible must
6 be separately approved in writing by City's Risk Manager or designee and shall protect
7 City, its officials, employees and agents in the same manner and to the same extent as
8 they would have been protected had the policy or policies not contained retention or
9 deductible provisions.

10 C. Each insurance policy shall be endorsed to state that coverage shall not
11 be reduced, non-renewed or canceled except after thirty (30) days prior written notice to
12 City, shall be primary and not contributing to any other insurance or self-insurance
13 maintained by City, and shall be endorsed to state that coverage maintained by City shall
14 be excess to and shall not contribute to insurance or self-insurance maintained by
15 Aquarium. Aquarium shall notify City in writing within five (5) days after any insurance
16 has been voided by the insurer or cancelled by the insured.

17 D. If this coverage is written on a "claims made" basis, it must provide for
18 an extended reporting period of not less than one hundred eighty (180) days,
19 commencing on the date this MOU expires or is terminated, unless Aquarium guarantees
20 that Aquarium will provide to City evidence of uninterrupted, continuing coverage for a
21 period of not less than three (3) years, commencing on the date this MOU expires or is
22 terminated.

23 E. Prior to taking possession of the Artwork, Aquarium shall deliver to City
24 certificates of insurance and the endorsements for approval as to sufficiency and form. In
25 addition, Aquarium shall, within thirty (30) days prior to expiration of the insurance,
26 furnish to City certificates of insurance and endorsements evidencing renewal of the
27 insurance. City reserves the right to require complete certified copies of all policies of
28 Aquarium at any time. Aquarium shall make available to City's Risk Manager or designee

1 all books, records and other information relating to this insurance, during normal business
2 hours.

3 F. Any modification or waiver of these insurance requirements shall only be
4 made with the approval of City's Risk Manager or designee. Not more frequently than
5 once a year, City's Risk Manager or designee may require that Aquarium change the
6 amount, scope or types of coverages required in this Section if, in his or her sole opinion,
7 the amount, scope or types of coverages are not adequate.

8 G. The procuring or existence of insurance shall not be construed or
9 deemed as a limitation on liability relating to Aquarium's performance or as full
10 performance of or compliance with the indemnification provisions of this MOU.

11 7. WAIVER OF CLAIMS AND INDEMNITY. Neither City nor any of its
12 boards, commissions, officials, employees or agents shall be liable, and Aquarium waives
13 all claims, for damage to persons or property sustained by Aquarium, its agents,
14 employees, volunteers, visitors or patrons resulting from the condition of the Artwork or
15 Aquarium's use thereof. Aquarium shall defend, indemnify, and hold harmless City, its
16 boards, commissions, officials, employees and agents from all damages or liability arising
17 out of any damage to any person or property (including property owned by City and the
18 Artwork itself) arising out of Aquarium's use of the Artwork.

19 8. TITLE. At no time shall Aquarium acquire any right, title or interest in
20 or to the Artwork, other than as specifically set forth in this MOU. Aquarium shall not
21 transfer or deliver the Artwork to any person or entity other than City without the prior
22 written consent of City's City Manager.

23 9. NOTICES. Any notice or approval required by this MOU shall be in
24 writing and personally delivered or deposited in the U.S. Postal Service, first class,
25 postage prepaid, addressed to Aquarium at the address first stated above, and to City at
26 333 West Ocean Boulevard, Long Beach, California 90802, Attn: City Manager. Notice of
27 change of address shall be given in the same manner as stated for other notices. Notice
28 shall be deemed given on the date deposited in the mail or on the date personal delivery

1 is made, whichever occurs first.

2 10. AMENDMENT. This MOU, including all Exhibits, shall not be
3 amended, nor any provision or breach waived, except in writing signed by the parties
4 which expressly refers to this MOU.

5 11. ASSIGNMENT. Aquarium may not assign, voluntarily or by
6 operation of law, this MOU or any portion hereof.

7 12. AMBIGUITY. In the event of any conflict or ambiguity between this
8 MOU and any Exhibit, the provisions of this MOU shall govern.

9 13. LAW. This MOU shall be governed by and construed pursuant to the
10 laws of the State of California (except those provisions of California law pertaining to
11 conflicts of laws).

12 14. COSTS. If there is any legal proceeding between the parties to
13 enforce or interpret this MOU or to protect or establish any rights or remedies under it,
14 the prevailing party shall be entitled to its costs, including reasonable attorneys' fees.

15 ///

16 ///

17 ///

18 ///

19 ///

20 ///

21 ///

22 ///

23 ///

24 ///

25 ///

26 ///

27 ///

28 ///

1
2
3
4
5
6
7
8
9
10
11
12
13
14
15
16
17
18
19
20
21
22
23
24
25
26
27
28

IN WITNESS WHEREOF, the parties have caused this document to be duly executed with all formalities required by law as of the date first stated above.

AQUARIUM OF THE PACIFIC, a California nonprofit organization

10/25, 2007

By Barbara Long

Barbara Long
(Type or Print Name)

10/25, 2007

By Janetta Lewis

Vanessa Lewis
(Type or Print Name)

"Aquarium"

EXECUTED PURSUANT TO SECTION 301 OF THE CITY CHARTER.

CITY OF LONG BEACH, a municipal corporation

11/1, 2007

By Christine F. Shuppey
City Manager

ASSISTANT

"City"

This Agreement is approved as to form on 10/25, 2007.

ROBERT E. SHANNON, City Attorney

By Rowla Conway
Deputy

OFFICE OF THE CITY ATTORNEY
ROBERT E. SHANNON, City Attorney
333 West Ocean Boulevard, 11th Floor
Long Beach, CA 90802-4664

LAC:bg
07-04411

EXHIBIT A

Exhibition Checklist

Title Poster

POSTER 1 From Sea to Shining Sea: *200 Years of Charting America's Coasts*

Exhibition Introduction

POSTER 2 The Coast Survey: *Growing with the Nation*

POSTER 3 The Coast Survey: *Working for You*

People

POSTER 4 Thomas Jefferson (1743–1826): *President with Foresight*

POSTER 5 Ferdinand R. Hassler (1770–1843): *Charting the Course*

POSTER 6 Alexander Dallas Bache (1806–1867): *The Survey Spreads Its Wings*

POSTER 7 George Davidson (1825–1911): *Mapping the Wild Pacific Coast*

Changing Tools and Technology

POSTER 8 Latitude and Longitude: *Where on Earth Are You?*

POSTER 9 Triangulation: *How Does Surveying Work?*

POSTER 10 Nautical Charts: *How Do Mariners Plot a Safe Course?*

POSTER 11 Ocean Mapping: *What Lies Below the Surface?*

POSTER 12 Tides and Currents: *Why Are They Important?*

Case Studies

POSTER 13 New York Harbor: *The Charting Begins*

POSTER 14 From Coast to Coast: *Mapping the Continent*

POSTER 15 Alaska: *Carrying the Flag Far North*

POSTER 16 Philippines: *Charting Tropical Waters*

POSTER 17 World War II: *On the Front Lines*

POSTER 18 Long Island, New York: *Locating Loved Ones Lost at Sea*

POSTER 19 U.S. Gulf Coast: *Responding to Large-Scale Disaster*

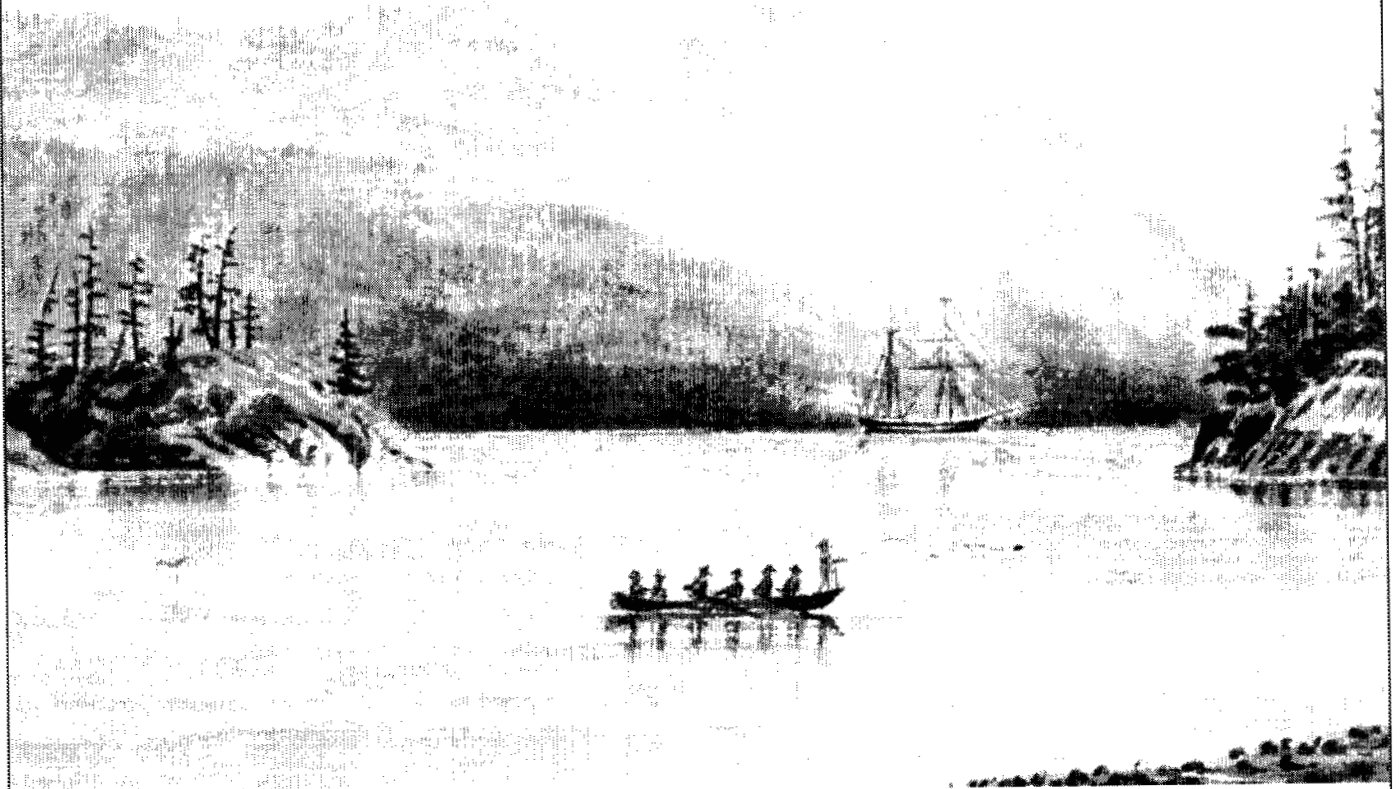
Conclusion and Credits

POSTER 20 200 Years Later: *Still Going Strong*

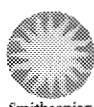
EXHIBIT B

FROM SEA TO SHINING SEA

200 YEARS OF CHARTING AMERICA'S COASTS



Exhibitor Handbook



Smithsonian

May 2007

The Smithsonian Institution Traveling Exhibition Service (SITES) and the National Oceanic and Atmospheric Administration (NOAA) are delighted that your organization is hosting *From Sea to Shining Sea: 200 Years of Charting America's Coasts*. The exhibition tells the story of America's first federal science agency, the Coast Survey, and its direct descendant, NOAA.

This handbook provides information about mounting, installing, and promoting the exhibition. It also gives you ideas on how to augment the posters with materials from your own collection and to create programs and activities that bring the exhibition stories to life. Please share this information with colleagues who will be working with this exhibition.

On pages 13-14, you will find an Exhibitor Feedback Report that you'll need to complete and return (along with copies of the publicity you receive) to the address on the form.

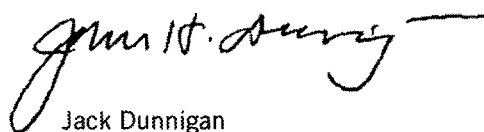
We look forward to opening this innovative program at 200 venues across the country on June 21, the first day of summer and World Hydrography Day. If you have any questions about the posters or how to present them, please contact SITES project director Jennifer Bine at 202.633.3106 or fromseatoshiningsea@si.edu.

We look forward to hearing about your success with *From Sea to Shining Sea*.

Sincerely,



Anna R. Cohn
Director
Smithsonian Institution
Traveling Exhibition Service



Jack Dunnigan
Assistant Administrator
National Ocean Service
National Oceanic and Atmospheric Administration

Exhibition Content	2
Exhibition Checklist	3
Mounting and Installation	4
Public Relations	5
Programming	10
Exhibitor Feedback Report	13

Exhibitors are invited to duplicate
this handbook for their own use.

Cover: *Strawberry Harbor, Straits of Rosario*
(San Juan Islands, WA) (detail)
by James Madison Alden, 1854
Courtesy Burke Museum of Natural History
and Culture (catalog number L-3369/2)

Exhibition Content

From Sea to Shining Sea will be delivered via FedEx the week of June 4, 2007, to the street address you provided on your application form.

In the meantime, you may download the following exhibition-related materials from the two sites listed below:

Poster Designs

Exhibition Script

Host Venues

Sample Press Release

Press Images and Logos

Exhibitor Feedback Report

Exhibitor Handbook

<http://www.sites.si.edu/host/fromseatoshiningsea.htm>

<ftp://sitesguest:9getfiles9@ftp.si.edu>

When prompted, enter the username [sitesguest] and password [9getfiles9].

The files are located within the *From Sea to Shining Sea* folder. If you have problems accessing the site, check your web browser to be sure that "Passive FTP" is enabled.

Exhibition Checklist

Title Poster

POSTER 1 From Sea to Shining Sea: *200 Years of Charting America's Coasts*

Exhibition Introduction

POSTER 2 The Coast Survey: *Growing with the Nation*

POSTER 3 The Coast Survey: *Working for You*

People

POSTER 4 Thomas Jefferson (1743–1826): *President with Foresight*

POSTER 5 Ferdinand R. Hassler (1770–1843): *Charting the Course*

POSTER 6 Alexander Dallas Bache (1806–1867): *The Survey Spreads Its Wings*

POSTER 7 George Davidson (1825–1911): *Mapping the Wild Pacific Coast*

Changing Tools and Technology

POSTER 8 Latitude and Longitude: *Where on Earth Are You?*

POSTER 9 Triangulation: *How Does Surveying Work?*

POSTER 10 Nautical Charts: *How Do Mariners Plot a Safe Course?*

POSTER 11 Ocean Mapping: *What Lies Below the Surface?*

POSTER 12 Tides and Currents: *Why Are They Important?*

Case Studies

POSTER 13 New York Harbor: *The Charting Begins*

POSTER 14 From Coast to Coast: *Mapping the Continent*

POSTER 15 Alaska: *Carrying the Flag Far North*

POSTER 16 Philippines: *Charting Tropical Waters*

POSTER 17 World War II: *On the Front Lines*

POSTER 18 Long Island, New York: *Locating Loved Ones Lost at Sea*

POSTER 19 U.S. Gulf Coast: *Responding to Large-Scale Disaster*

Conclusion and Credits

POSTER 20 200 Years Later: *Still Going Strong*

Mounting and Installation

The 20 posters in this exhibition are printed in full color on glossy 80# cover stock. Each poster measures 19.5" x 28.5". Your mounting options range from framing, to dry-mounting, to thumb-tacking them to your walls. The method you choose should reflect your anticipated use of the posters as well as your budget.

Framing.

Standard metal-section frames come in a variety of lengths. Do-it-yourself framing could cost as little as \$35 from a retail store, while custom-made frames in wood or enameled metal may cost up to \$100 each. If you plan to circulate framed posters, make certain to use acrylic glazing rather than glass. You may also frame dry-mounted posters without any glazing.

Dry Mounting.

Museums, schools, photography studios, sign shops, and commercial framing shops are equipped with dry-mounting presses. Similar to large irons, these presses use a heat-activated, pressure-sensitive tissue to form a permanent bond between graphic material and a backing material—illustration board, Fome-cor, or other lightweight substrate. If you use a flexible substrate, you may wish to mount a piece of paper on the back of the substrate to prevent warping.

Film Lamination.

You may wish to permanently protect the posters from the elements by laminating them, especially if they will be shown outdoors or moved frequently. Nearly every city will have "laminating" listed in the yellow pages of its telephone book. In addition, many school systems may have laminators or receive special rates from contract companies.

Hanging.

Any frame that you choose will have suggested hanging hardware. You may also attach dry-mounted or laminated posters to your walls using double-sided or foam tape, escutcheon pins or thumb tacks, or a hanging wire affixed to the back of the posters.

Installation.

Although you are free to hang the posters in any order that works for your institution, we suggest the arrangement shown in the Exhibition Checklist.

Public Relations

From Sea to Shining Sea will provide you with many excellent opportunities for media coverage and promotional activities. This section of the handbook is designed to make your job in promoting the exhibition as easy as possible using strategies that have been effective for past SITES exhibitions. As you use these PR materials, please stay in touch so that we can provide you with the support and information you need to make your showing a great success.

If you have any questions about any part of this section, please contact Miriam Keegan, SITES Director of Public Relations, at 202.633.3123 or keeganm@si.edu.

Exhibition Credit Line.

All exhibition-related promotional materials must contain the exhibition credit line:

From Sea to Shining Sea: 200 Years of Charting America's Coasts is brought to you courtesy of the National Oceanic and Atmospheric Administration and the Smithsonian Institution.

Examples of such materials include (but are not limited to) invitations, banners, signage, posters, public program brochures, postcards, and printed, video, internet, and audio announcements.

Logo Guidelines.

The SITES and NOAA logos must appear on all publicity materials including (but not limited to) press releases, flyers, poster copy, press preview invitations, scripts of public service announcements, advertising copy, banners, posters, etc. The SITES and NOAA logos must be visually equivalent in size and at least the same size as that of your institution.

These logos may be downloaded from the two sites referenced on page 2.

Smithsonian Logo Guidelines. You may use the logo either in black and white or in color. The Pantone colors used in the color emblem are Blue 3135C and UC (uncoated) and Yellow 116C and 109UC. The font for the lettering is Minion. Color specifications for other uses are available at <http://www.si.edu/silogo/>.



Smithsonian Institution
Traveling Exhibition Service



Smithsonian Institution
Traveling Exhibition Service

- ☞ The Sunburst is made up of the sun and the circular sky background. Do not use the Sunburst without the accompanying logotype.
- ☞ The Sunburst itself should *never* be black. The circular sky background may be printed in black.

- ☞ When reversed out of a dark background and used without the “sky,” the sun will be white. If a light-colored stock or background is used, the black-and-white version must be used. If the background is dark, the white sun alone must be used.
- ☞ When printing the black-and-white version of the logo on colored paper, the sun will be the color of the paper on which it is printed.

NOAA Logo Guidelines. You may use the logo either in color or in black and white. The Pantone colors used in the color emblem are PMS Process Blue and PMS Reflex Blue. The font for the lettering around the emblem is Helvetica Medium (generic Arial or Univers may be substituted).



Press Images.

For press, marketing, and web purposes, several images have been selected to represent the exhibition. You and your press contacts may download these images, a caption sheet, and the exhibition title block from the two sites referenced on page 2.

Please make sure that all images used are properly credited, per the instructions on Press Images & Captions on page 9.

Please note that large digital image files such as the ones on the site are often too large to send as e-mail attachments.

Publicity Ideas.

When planning your media relations strategy, remember that the SITES Public Relations Office is a resource. We are happy to offer strategies that we have seen work at other venues or simply to brainstorm what types of promotions might work best in your region. Consider some of the following suggestions as you prepare your media campaign.

Newspapers. A suggested press release, information about downloading digital images, and links to general background material are included in this handbook. In addition to sending the press release to your area newspapers, consider the following ideas:

- ☞ Send the news release to the attention of the editor or reporter who has the most interest in this information.
- ☞ Ask the editor of your daily newspaper to place an article or photographs in the Sunday photo magazine or supplemental section. These sections often reach more people than a weekly paper.
- ☞ Contact the state Associated Press and United Press International wire services. Information of statewide interest can be telephoned in and will be carried in newspapers throughout the state. Wire service offices are generally located in the state capital and in large metropolitan areas.

Radio and Television. Radio and television stations will air public service announcements (PSAs), written or taped. If you have a small exhibition budget, send local stations a written 30-second media spot announcement. For example:

[*Your Venue Name*] invites area residents to a special exhibition—*From Sea to Shining Sea: 200 Years of Charting America's Coasts*. The exhibition is brought to you courtesy of the National Oceanic and Atmospheric Administration and the Smithsonian Institution.

The exhibition opens on [Date] and is on view through [Date]. [Your Venue Name] is open [Days & Times].

- ☞ Invite the media to cover special events and public programs. These are community news items that bring attention to your organization and the exhibition.

Local Calendars of Events. In addition to contacting your local newspaper editors and feature reporters, ask the Calendar editors to include a short item and photograph on the exhibition.

- ☞ Area colleges and universities have newspapers that can print both calendar entries and articles on the exhibition.
- ☞ Local chambers of commerce, visitors' bureaus, and convention centers have monthly publications that list local community activities.

Sample Press Release

[VENUE] Presents Smithsonian Poster Exhibit Celebrating 200th Anniversary of NOAA Predecessor



Every day, cruise ships sail from Miami; coal ships deliver to power plants along the shores of the Great Lakes; crabbing boats harvest Alaskan king crab in the Bering Sea; and weekenders prepare their boats for leisurely afternoons on the Chesapeake Bay. Each one of these mariners uses the resources of NOAA's Navigation Services to safely navigate U.S. coastal waters.

In recognition of this landmark 200th anniversary of the establishment of the Survey of the Coast, NOAA and the Smithsonian Institution Traveling Exhibition Service (SITES) have created the exhibit, "From Sea to Shining Sea: 200 Years of Charting America's Coasts," which opens June 21 at the [VENUE, CITY, STATE]. The [museum, lighthouse, center, etc.] is one of 200 venues nationwide to be a part of this special celebration. To view a complete list of host organizations, visit www.sites.si.edu/host/fromseatoshiningsea.htm.

In 1807, President Thomas Jefferson recognized the need to chart the coastal waters of this country as vital to the independence and prosperity of the economy and to the security of this fledgling Nation. With his foresight, Jefferson compelled Congress to pass an Act establishing "the Survey of the Coast," a predecessor agency of today's National Oceanic and Atmospheric Administration. The Survey of the Coast charted the nation's ports and waterways, researched physical characteristics of the ocean bottom and explored many of the world's oceans. The organization was known for a tradition of perseverance, scientific integrity, engraving and charting skills, and courage.

This exhibit, which will be shown in maritime museums, ports, aquaria, nature centers, schools, libraries and lighthouses, celebrates the history accomplishments and scientific contributions of the nation's first science agency. The 20 colorful posters are illustrated with photos, charts and artwork from the Survey's archives.

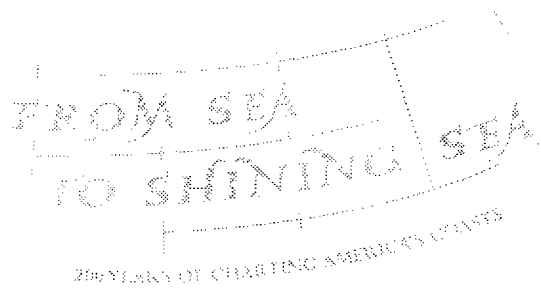
"This year we are proud to be holding a yearlong celebration of 200 years of science, service, and stewardship to the nation originating with the Survey of the Coast," said Captain Steven R. Barnum, director of NOAA Office of Coast Survey, which is one of the four offices that continues to carry out the original agency's mission. "We are honored that our partnership with the Smithsonian Institution has produced this vibrant depiction of our history to help us commemorate this distinguished occasion."

Today, waterborne commerce remains the backbone of the U.S. economy, contributing more than 13 million jobs and \$1 trillion annually. In the past two centuries, the Survey has mapped more than 95,000 miles of coastline, produced more than 20,000 nautical maps and charts, installed more than 6,000 tide stations, helped predict the movement of oil spills, established the Pacific Tsunami Warning System and maintained the national network of more than 1,000 GPS reference sites. Though the methods have changed throughout time, Jefferson's legacy lives on in NOAA's navigation services as they continue to benefit safety, national security and economic competitiveness.

An agency of the U.S. Commerce Department, NOAA is dedicated to enhancing economic security and national safety through the prediction and research of weather and climate-related events and information service delivery for transportation, and by providing environmental stewardship of our nation's coastal and marine resources. Through the emerging Global Earth Observation System of Systems (GEOSS), NOAA is working with its federal partners, more than 60 countries and the European Commission to develop a global monitoring network that is as integrated as the planet it observes, predicts and protects." "From Sea from Sea to Shining Sea" is part of a series of anniversary events sponsored by NOAA. For more information, visit www.noaa.gov and www.celebrating200years.noaa.gov.

SITES has been sharing the wealth of Smithsonian collections and research programs with millions of people outside Washington, D.C., for more than 50 years. SITES connects Americans to their shared cultural heritage through a wide range of exhibitions about art, science and history, which are shown wherever people live, work and play. Exhibition descriptions and tour schedules are available at www.sites.si.edu.

Press Images & Captions



Unless otherwise noted, all images should be credited "Courtesy NOAA."
Images may be downloaded from the two sites referenced on page 2.



/// Strawberry Harbor, Straits of Rosario
James Madison Alden, 1854
Courtesy Burke Museum of Natural History and Culture
Surveyors heave a weighted line to measure the depths of a harbor in this early watercolor.



/// Taking Measurements
Working under rugged conditions with only basic tools, early Coast Survey teams laid the foundation of knowledge about the nation's coastlines. In this 1921 photo, surveyors in Southeast Alaska take coastline measurements.



/// Alexander Bache
Alexander Bache, the Coast Survey's second superintendent, peers through a sextant, an instrument used to determine location by measuring angular distances to the stars.



/// Golden Gate Bridge with Cranes
Golden Gate Bridge with Cranes
Courtesy 111th Aerial Photography Squadron
With little room to spare, a shipload of cranes passes under San Francisco's Golden Gate Bridge. A nearby tide gauge provides real-time readings to ship captains so they know when it's safe to pass.



/// Katrina Aftermath
NOAA's National Geodetic Survey collected aerial images of Katrina's destruction, providing emergency responders critical information in affected areas. This image shows shipping vessels stranded in Empire, La.

Programming

The following information is provided to assist in enhancing the educational mission of *From Sea to Shining Sea*. We hope this material will inform your institution's educational initiatives, public programs, handouts, etc.

Local Speakers with NOAA and Coast Survey Experience.

Your best source of NOAA speakers and regional information is your NOAA Regional Coordinator, listed below. (Note that New York, Pennsylvania, and Florida fall into two regions.)

Alaska Region

(AK)

David Zezula

NOAA, National Ocean Service
Anchorage, AK
907.786.7004
David.J.Zezula@noaa.gov

North Atlantic Region

(CT, DE, MA, MD, ME, NH, NJ,
NY, PA, RI, VA, VT)

Jennifer Costanza

NOAA, National Marine Fisheries
Gloucester, MA
978.281.9388
Jennifer.Costanza@noaa.gov

Central Region

(AR, CO, IA, KS, KY, MO, ND, NE,
OK, SD, TN, WV, WY)

Michael Hudson

NOAA, National Weather Service
Kansas City, MO
816.268.3132
Michael.Hudson@noaa.gov

Pacific Islands Region

(GU, HI)

Delores Clark

Delores.Clark@noaa.gov
NOAA, National Ocean Service
808.532.6411
Honolulu, HI

Great Lakes Region

(IL, IN, MI, MN, NY, OH, PA, WI)

Brian Link

NOAA, National Ocean Service
Muskegon, MI
231.759.1252
Brian.Link@noaa.gov

South Atlantic Region

(FL, GA, NC, SC)

Steven O'Shields

NOAA National Ocean Service
Charleston, SC
843.740.1242
Steven.O'Shields@noaa.gov

Gulf of Mexico Region

(AL, FL, LA, MI, TX)

Tim Osborn

NOAA, National Ocean Service
Lafayette, LA
337.291.2111
Tim.Osborn@noaa.gov

Western Region

(AZ, CA, ID, MT, NM, NV, OR, UT, WA)

Claudia Cox

NOAA, National Weather Service
Salt Lake City, UT
801.524.6295
Claudia.Cox@noaa.gov

Making the Local Connection.

While *From Sea to Shining Sea* will provide your visitors a thorough introduction to the work of the Coast Survey, the 20 posters obviously cannot touch on the experiences of every region of the country. That's where you come in. While each collection is different, it is likely that you have early maps and charts of your community and possibly even surveying equipment, boats, or boat models that you can share with your visitors.

If your institution doesn't hold such materials, contact your county surveyor's office or local maritime association to see if you may borrow or reproduce early surveys of your area. Or purchase charts of your local waterways from a local nautical chart agent to give the exhibit a local flavor. To find a local chart agent, visit <http://www.naco.faa.gov/Agents.asp>. To find available charts of your area visit, <http://nauticalcharts.noaa.gov/mcd/ccatalogs.htm>.

- ☛ Contact the NOAA Regional Coordinator and ask for a NOAA expert to give a presentation on a local ocean or atmospheric issue.
- ☛ Many organizations are looking for places to hold navigation and boating safety classes. Yours might be just the space they need. Invite local boating safety organizations to speak on interpreting charts or other relevant topics.
- ☛ Members of the military, Coast Survey, and merchant marines are scattered across our country. Solicit their memories and materials related to the challenges and hazards of life at sea. Check with your local VFW and American Legion posts for ideas.
- ☛ Contact a local surveying or ocean mapping company and ask its staff to give a presentation on the tools and techniques used in modern surveying.

NOAA Websites.

Your best resource for information, additional downloadable materials, and support about celebrating the 200th anniversary of the Coast Survey and NOAA's 200 years of science, service, and stewardship can be found at <http://celebrating200years.noaa.gov/>.

You'll find a Coast Survey/NOAA historical timeline at <http://www.history.noaa.gov/legacy/time1800.html>. Spanning 1807 to 2000, the timeline notes the Survey's greatest leaders and best-known contributors, its numerous technological and scientific accomplishments, and how the agency has changed over the past 200 years.

Visit <http://oceanservice.noaa.gov/education> and <http://celebrating200years.noaa.gov/education.html> to find a variety of education materials, activities, and ideas that you can put to use in your organization and community. Click on "Discovery Classroom" for a collection of formal lesson plans based on the major thematic areas of the National Ocean Service (NOS). All of the lessons emphasize hands-on activities using online data resources and are correlated to National Science Education Standards and the American Association for the Advancement of Science Benchmarks for Science Literacy. Click on "*Discovery Classroom*" for

a collection of formal lesson plans based on the major thematic areas of the National Ocean Service (NOS). All of the lessons emphasize hands-on activities using online data resources and are correlated to National Science Education Standards and the American Association for the Advancement of Science Benchmarks for Science Literacy.

Exhibitor Feedback Report

From Sea to Shining Sea: 200 Years of Charting America's Coasts

To help SITES better serve you, we ask that you complete and return this form by September 1, 2007. Your feedback is critical to the success of future projects. Thank you in advance for your time.

Please return this form and any enclosures to:
Smithsonian Institution Traveling Exhibition Service
Attention: Jennifer Bine
PO Box 37012, MRC 941 Washington, DC 20013-7012

Name of Host Facility _____

City, State _____

Contact Name and Title _____

Email _____

Phone number _____

Opening Date _____

Closing Date _____

How did you mount and display the posters? _____

How many people do you estimate saw the posters? _____



The National Oceanic and Atmospheric Administration is dedicated to enhancing economic security and national safety through the prediction and research of weather and climate-related events and information service delivery for transportation, and by providing environmental stewardship of our nation's coastal and marine resources. Through the emerging Global Earth Observation System of Systems (GEOSS), NOAA is working with its federal partners, more than 60 countries, and the European Commission to develop a global monitoring network that is as integrated as the planet it observes, predicts, and protects. www.noaa.gov



Smithsonian Institution Traveling Exhibition Service

SITES has been sharing the wealth of Smithsonian collections and research programs with millions of people outside Washington, DC, for more than 50 years. SITES connects Americans to their shared cultural heritage through a wide range of exhibitions about art, science, and history, which are shown wherever people live, work and play. www.sites.si.edu

© 2007 Smithsonian Institution
Design by Catalone Design Co. LLC | www.catalonedesign.com