

1 PHASING PLAN - 3
 0' 10' 20' 30' 40' 50' 60' 70' 80' 90' 100'
 1/8"=1'-0"
 NORTH

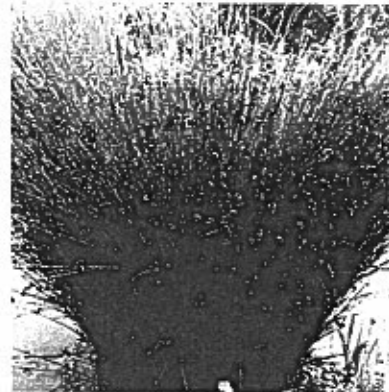
NO. R - 6015		DATE		DESCRIPTION	
JOB NO AP1035-01		DATE		DESCRIPTION	
DRAWING C-113		DATE		DESCRIPTION	
SHEET		DATE		DESCRIPTION	
OF XXX		DATE		DESCRIPTION	
DRAWING NO. B-4487		DATE		DESCRIPTION	
FOLD BOOK LC22		PAGE 378-445		SCALE	
TITLE		PROJECT		DRAWING	
LONG BEACH AIRPORT		TERMINAL AREA IMPROVEMENT - PHASE I		PHASING PLAN - 3	
SITE PLAN REVIEW SUBMITTAL - NOT FOR CONSTRUCTION					



Washingtonia filifera - California Fan Palm



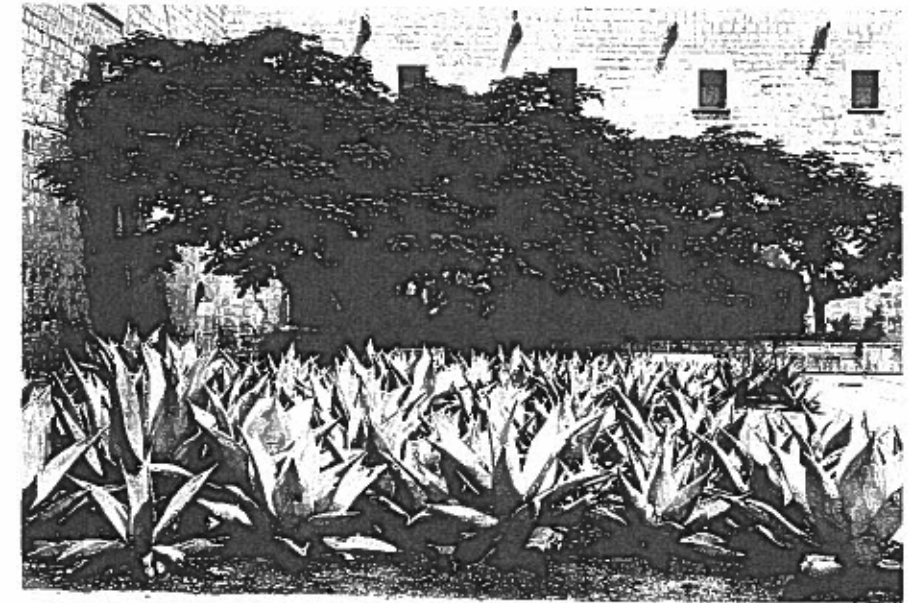
Chonropetalum tectorum - Cape Bush



Juncus patens 'Carman's Grey' - California Grey Bush

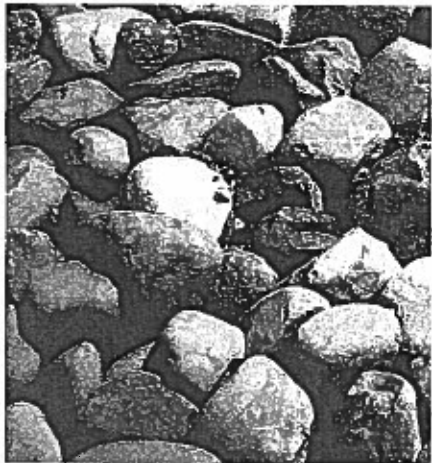


Pennisetum 'Eaton Canyon' - Dwarf Red Fountain Grass



Agave tequilana - Blue Agave

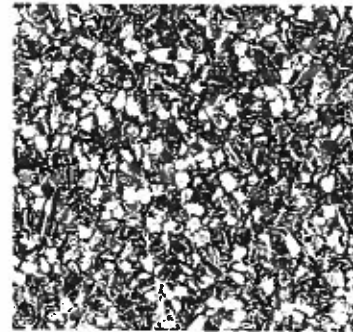
PLANT MATERIAL



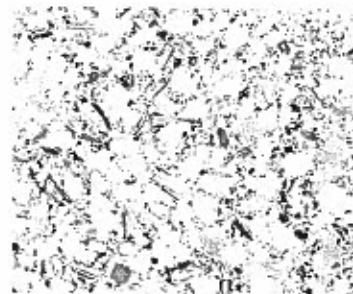
Arroyo Cobble



Timber Paving



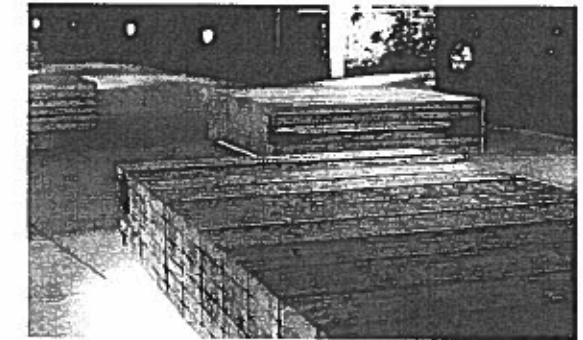
Mother of Pearl Aggregate



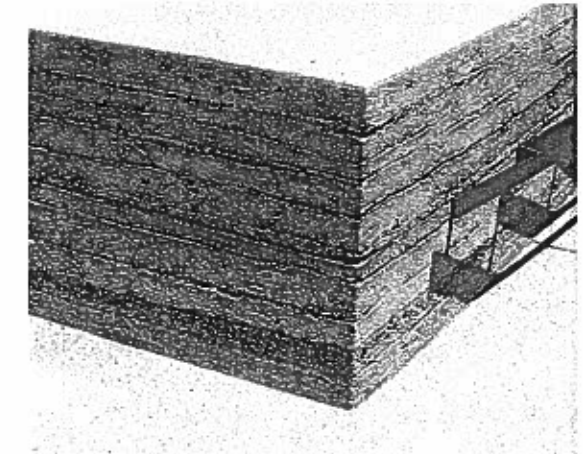
Abalone Shell Aggregate



Narrow Concrete Modular Pavers



Stacked Timber Benches with Integral Lighting



'Sedimentary' Concrete Plinth

HARDSCAPE MATERIAL

TIMBER PAVING
REMINISCENT OF
HISTORIC BRIDGES,
BOARDWALK AND PIERS

BOULDERS
(LINEAR, +/- 18-24" HT.)
TYP. 1 OF 9

LOS ANGELES RIVER
WALK EXPERIENCE:
ORNAMENTAL GRASSES
& ARROYO COBBLE

ARROYO COBBLE
BANDS, TYP. 1 OF 6
LOCATIONS

LONG BEACH "SHORELINE":
SEA OF BLUE AGAVE

ART PLINTHS, 1 OF 8, TYP.
OPPORTUNITY TO DISPLAY ART
OR ARTIFACTS W/ NARRATIVE
GRAPHICS TO CREATE AN
INTERPRETIVE EXPERIENCE
ALONG THE EDGE OF THE SPACE
(STONE OR CONCRETE TO
COORDINATE WITH BOULDERS
AND ARROYO COBBLE)

CALIFORNIA FAN PALMS,
TYP. 1 OF 14

SAND-COLORED INTEGRAL
COLOR CONCRETE W/ EXPOSED
AGGREGATE FINISH (ABALONE
SHELL OR BEACH GLASS).
AGGREGATE EVOKES COASTAL
CHARACTER AND REMINDS
VISITORS OF PROXIMITY TO BEACH

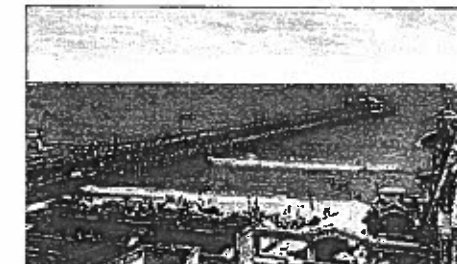
SAN GABRIEL RIVER
WALK EXPERIENCE:
ORNAMENTAL GRASSES
& ARROYO COBBLE

LINEAR CONCRETE UNIT
PAVERS. COLOR COORDINATES
WITH, OR MATCHES
SAND-COLORED CONCRETE TO
PROVIDE TEXTURAL RELIEF.
LINEAR ARCHITECTURAL
PAVERS INSTALLED TO LOOK
LIKE TRACKS CROSSING THE
SAND.

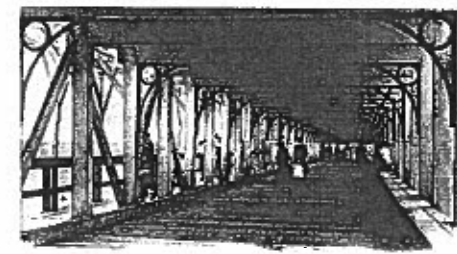
CUSTOM STACKED
TIMBER BENCHES
WITH INTEGRAL LIGHTING,
TYP. 1 OF 10



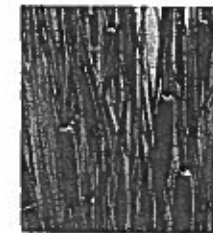
LONG BEACH HARBOR UNDER CONSTRUCTION, LONG BEACH, CALIFORNIA, (P. M. KOSKOFF, LOS ANGELES, NO. 20611)

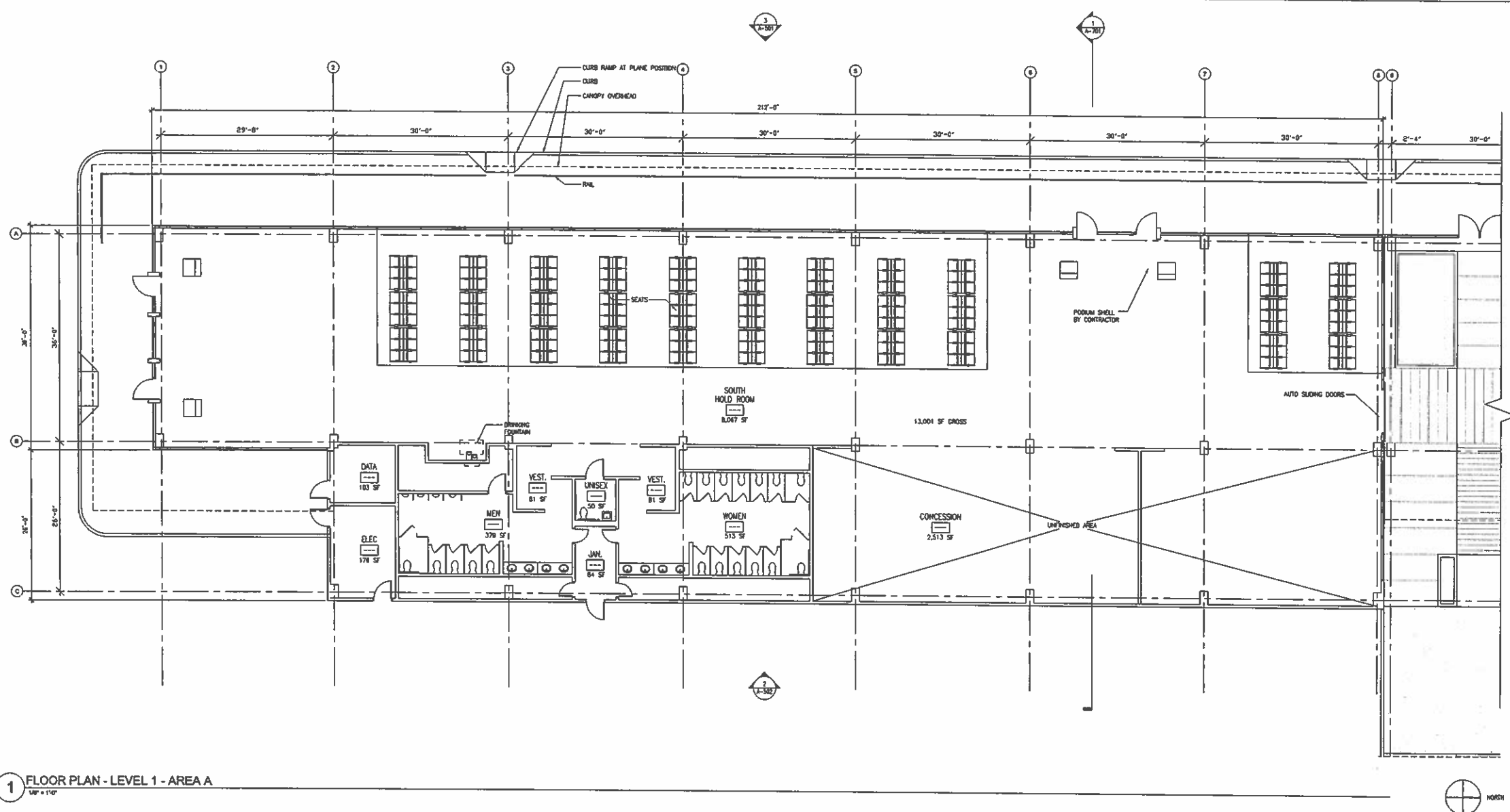


THE PIER, LONG BEACH, CALIFORNIA, (P. CALIFORNIA POSTCARD CO., LOS ANGELES, NO. 24015)

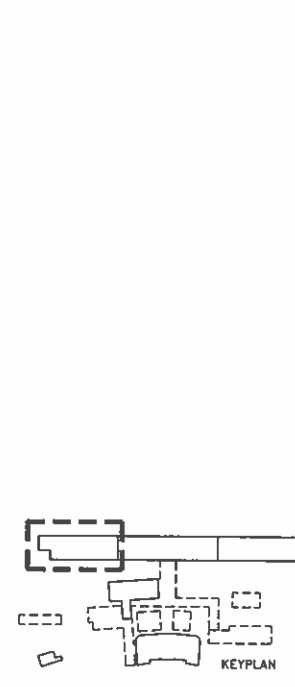


THE PIER, LONG BEACH, CALIFORNIA

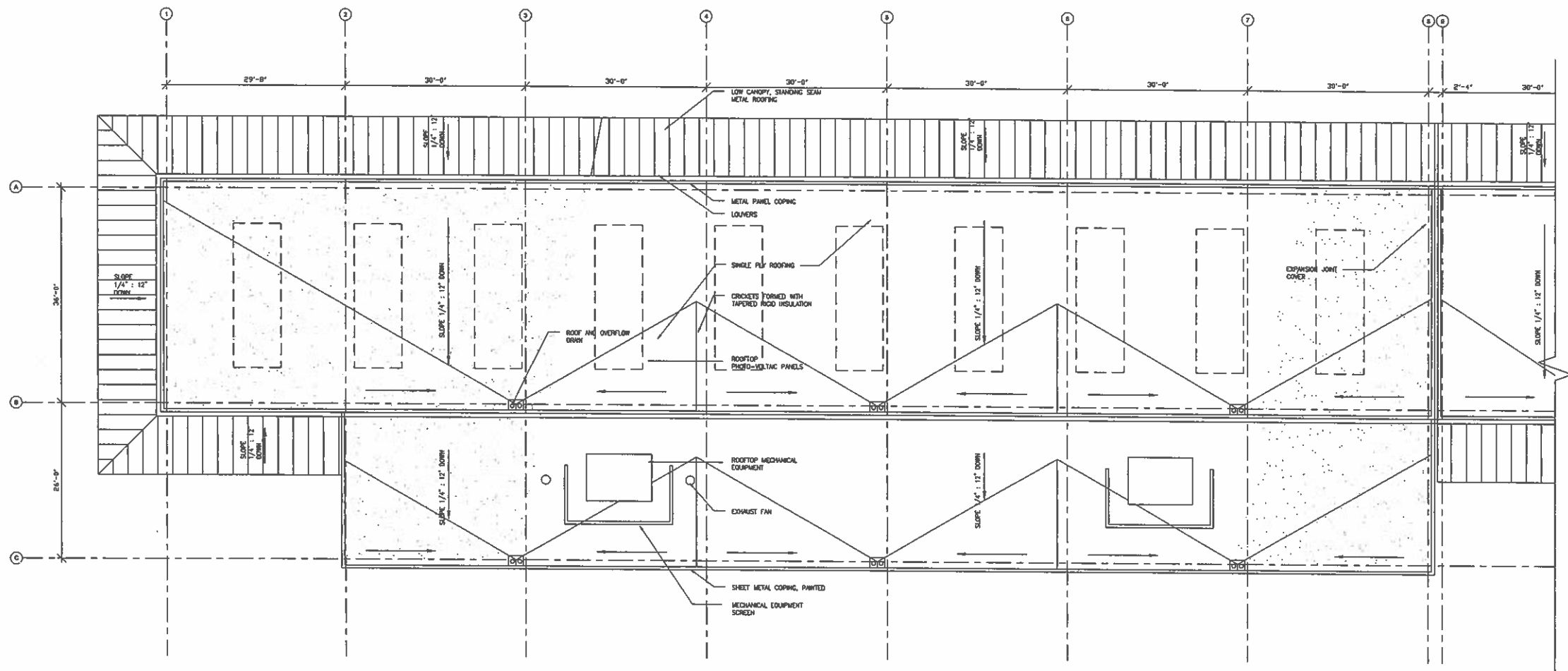




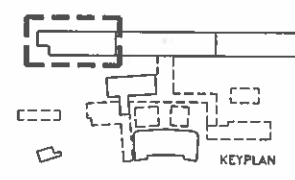
1 FLOOR PLAN - LEVEL 1 - AREA A
 1/8" = 1'-0"



SITE PLAN REVIEW SUBMITTAL - NOT FOR CONSTRUCTION LONG BEACH AIRPORT TERMINAL AREA IMPROVEMENT - PHASE I		NO. R- 6815 JOB NO. AP1035-01 DISCIPLINE A-21A SHEET OF XXX DRAWING NO. B-4487
FLOOR PLAN AREA A	PAGE 378-455 LC22	GRAPHIC SCALE
REVISIONS NO. DATE DESCRIPTION	REVISIONS NO. DATE DESCRIPTION	PLANNING SUBMITTAL 211.05



1 ROOF PLAN - AREA A
1/8" = 1'-0"



SITE PLAN REVIEW SUBMITTAL - NOT FOR CONSTRUCTION LONG BEACH AIRPORT TERMINAL AREA IMPROVEMENT - PHASE I		REVISIONS NO. DATE SHEET DESCRIPTION 12.11.08 PLANNING SUBMITTAL
FIELD BOOK LC22 PHASE 376-458 DRAWING SCALE 1" = 20' 0 10 20 30 40 50 60 70 80 90 100	ROOF PLAN AREA A	REVISIONS NO. DATE SHEET DESCRIPTION 12.11.08 PLANNING SUBMITTAL
NO. R- 6815 JOB NO. AP1035-01 DISCIPLINE A-2RA SHEET of XXX	DRAWING NO. B-4487	REVISIONS NO. DATE SHEET DESCRIPTION 12.11.08 PLANNING SUBMITTAL

