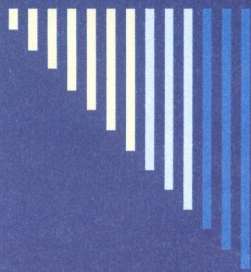


28



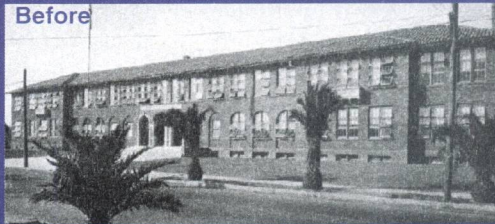
# Natural Hazards Mitigation Plan

City of Long Beach



## 1933 Long Beach Earthquake

- Magnitude 6.4
- March 10, 1933
- 5:55pm
- 120 deaths
- \$50 million in damages (1933 dollars)







## 1994 Northridge Earthquake

- Magnitude 6.7
- \$25 billion in damages
- 72 deaths
- 11,846 people received hospital treatment for quake related injuries.



3



## What is Mitigation?

- FEMA defines Mitigation as:
  - Sustained actions taken to reduce or eliminate long-term risk to people and property from hazards and their secondary effects.

4

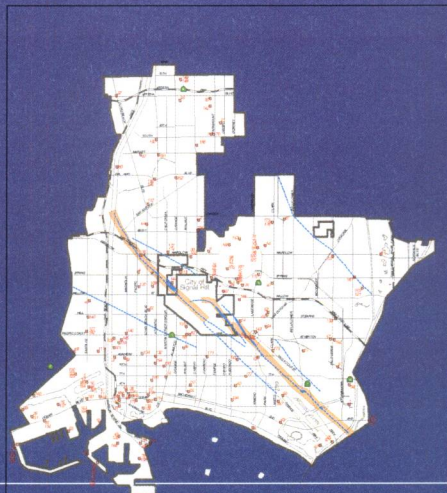


## Mitigation Planning Process

- Step #1: Organize Resources
  - Public Participation
- Step #2: Assess Risks
  - Identify Hazards and Vulnerability
- Step #3: Develop a Mitigation Plan
  - Develop Goals and Action Items
- Step #4: Implement the Plan
  - Adopt the Plan
  - Implement the Plan
  - Update the Plan

5

## “Most Probable Source” Newport-Inglewood M7.0




6

 **City of Long Beach California**  
Critical & Essential Facilities  
Earthquake Hazard Area

**Legend**


- Critical & Essential Facilities
- Earthquake Fault Location Marked
- Fault Location of Long Beach Invasiveness
- Long Beach Major Streets
- Major Road
- Major - Special Studies Zone
- City of Long Beach Boundary



## Plan Goals & Mitigation Actions

- Goals
  - Protect Life & Property
  - Increase Public Awareness
  - Strengthen Partnerships
  - Enhance Environmental & Historical Preservation
  - Improve City Emergency Services
- Mitigation Action Items

7



## Thank You

Any Questions?