



# CITY OF LONG BEACH

# C-5

## DEPARTMENT OF PUBLIC WORKS

333 WEST OCEAN BOULEVARD • LONG BEACH, CA 90802 • (562) 570-6383 • FAX (562) 570-6012

August 11, 2009

HONORABLE MAYOR AND CITY COUNCIL  
City of Long Beach  
California

### RECOMMENDATION:

Request the City Manager or designee to accept an easement deed for alley widening and a corner cut at 601 West Willow Street. (District 7)

### DISCUSSION

It is the goal of the Department of Public Works to widen streets and alleys to the standards established in the City's General Plan. When significant new development is proposed, the public rights-of-way adjacent to the site are reviewed for sufficiency to accommodate the new development. For the construction of a 1,998 square foot convenience market at an existing gasoline station at 601 West Willow Street, the dedication of additional alley width and a corner cut is recommended. In particular, the dedications recommended are as follows:

The existing 15-foot wide alley should be widened on the south side by 2.5 feet, to a total width of 17.5 feet. The standard alley width of 20 feet will be achieved when property on the north side of the alley is improved and a public alley dedication of 2.5 feet is recorded.

A nine-foot by nine-foot corner cut should be dedicated and improved at the southeast corner of the property in order to provide the flat path around the curb ramp needed to meet ADA requirements.

The developer of the subject property agreed to development conditions that include the above-described dedication, although neither the project nor the improvements listed above have been constructed yet.

**DIRECTOR'S OFFICE  
BUDGET & PERSONNEL**  
333 W. Ocean Blvd., 9<sup>th</sup> Floor  
Long Beach, CA 90802  
Ph. (562) 570-6383  
Fax (562) 570-6012

**ENGINEERING**  
333 W. Ocean Blvd., 9<sup>th</sup> Floor  
Long Beach, CA 90802  
Ph. (562) 570-6634  
Fax (562) 570-6012

**ENVIRONMENTAL  
SERVICES**  
2929 E. Willow Street  
Long Beach, CA 90806  
Ph. (562) 570-2850  
Fax (562) 570-2861

**FLEET SERVICES**  
2600 Temple Avenue  
Long Beach, CA 90806  
Ph. (562) 570-5400  
Fax (562) 570-5414

**PUBLIC SERVICE**  
1601 San Francisco Avenue  
Long Beach, CA 90813  
Ph. (562) 570-2782  
Fax (562) 570-2729

In conformance with the California Environmental Quality Act, Categorical Exemption No. CE-07-09 was issued for this project.

This matter was reviewed by Deputy City Attorney Linda Trang on March 17, 2009, and by Budget and Performance Management Bureau Manager David Wodynski on July 21, 2009.

TIMING CONSIDERATIONS

City Council action on this matter is not time critical.

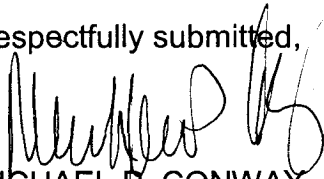
FISCAL IMPACT

A document processing fee of \$490 was paid by the developer and deposited in the General Fund (GP 100) in the Department of Public Works (PW).

SUGGESTED ACTION:

Approve recommendation.

Respectfully submitted,



MICHAEL P. CONWAY  
DIRECTOR OF PUBLIC WORKS

APPROVED:

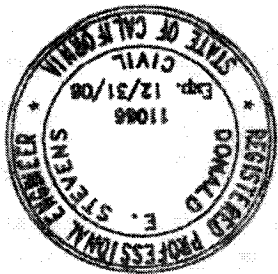


PATRICK H. WEST  
CITY MANAGER

EXHIBIT A

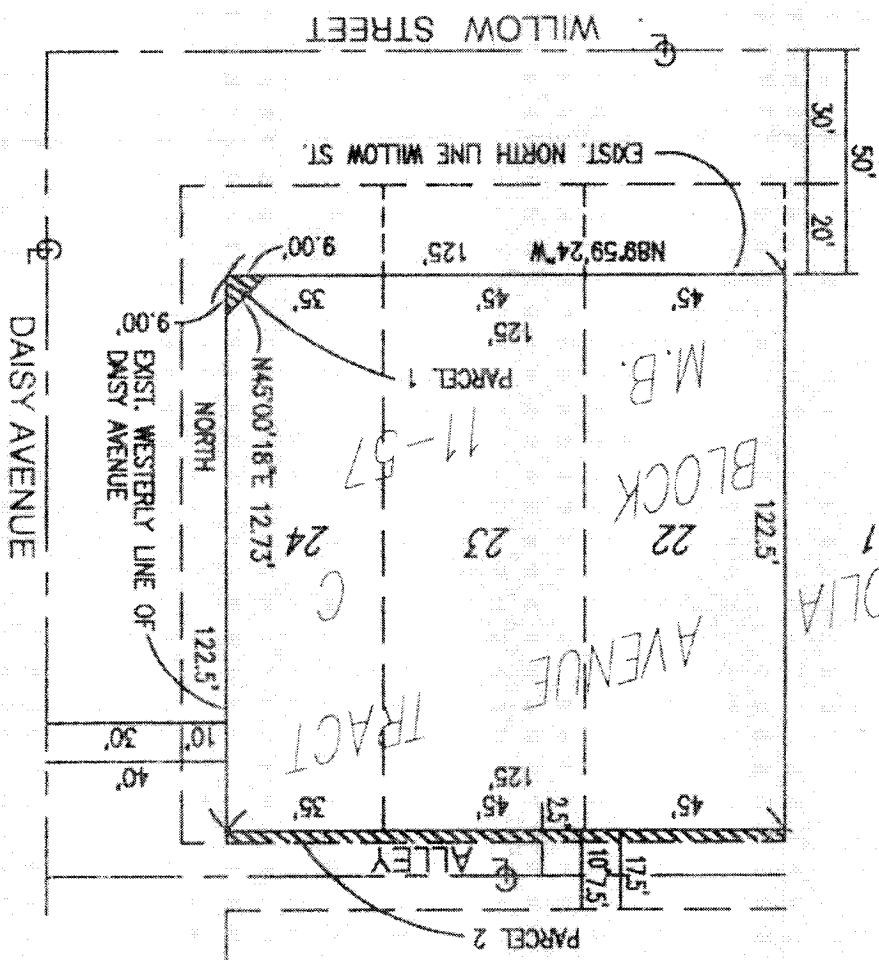
DATE DONALD E. STEVENS R.C.E. 11066

*Donald E. Stevens 9-24-68*



AREA TO BE DEDICATED

LEGEND:



SCALE: 1" = 40'

MAGNOLIA AVENUE TRACT  
601 W. WILLOW STREET