



# CITY OF LONG BEACH

# R-40

## DEPARTMENT OF PUBLIC WORKS

333 West Ocean Boulevard • Long Beach, CA 90802 • (562) 570-6383 • FAX (562) 570-6012

May 15, 2007

HONORABLE MAYOR AND CITY COUNCIL  
City of Long Beach  
California

### RECOMMENDATION:

Receive and file the attached Airport activities report. (District 5)

### DISCUSSION

Included is the Monthly Airport Activity Report for February and March 2007.

**Airport Passenger, General Aviation (GA) and Cargo Activity** - The Monthly Airport Activity Report provides monthly and year-to-date statistics for airline passengers (total and enplaned), aircraft operations by user category, and cargo carrier tonnage. Total passenger counts through March were 659,395 compared to last year's 672,464 a decrease of 1.9%. The decrease in total passengers is attributed primarily to the discontinuance of service by American Airlines. GA operations, year-to-date, compared to last year are up 22.9%, (97,346 operations vs. 79,194). Cargo volumes, year-to-date, are down 7.9% (12,018 tons vs. 13,056).

**Noise Activity** - The Monthly Airport Noise Statistics Report includes four separate reports with current month and year-to-date totals. The four reports are as follows:

- Noise Complaints – Summarizes noise complaint information for commercial (which includes cargo carriers), GA, and other operations.
- Noise Complaint Plot Map – Identifies the origin of the complaint.
- Commercial Late Night Activity – Summarizes activity between 10:00 p.m. to 11:00 p.m. and 11:00 p.m. to 7:00 a.m. by airline.
- Noise Violations – Summarizes violations for airline and GA operations. Provides a complete listing of each violation, includes violator's name, date and time of violation, aircraft type, aircraft noise level, and the time specific allowable noise level.

The Airport's Noise Office receives and investigates noise inquiries and complaints from local residents and residents who live outside of Long Beach. For the month of

ADMINISTRATION,  
PLANNING & FACILITIES  
333 W. Ocean Blvd., 9<sup>th</sup> Floor  
Long Beach, CA 90802  
Ph. (562) 570-6383  
Fax (562) 570-6012

AIRPORT  
4100 Donald Douglas Dr.  
Long Beach, CA 90808  
Ph. (562) 570-2600  
Fax (562) 570-2601

ENGINEERING & STREET  
MAINTENANCE  
333 W. Ocean Blvd., 9<sup>th</sup> Floor  
Long Beach, CA. 90802  
Ph. (562) 570-6634  
Fax (562) 570-6012

ENVIRONMENTAL  
SERVICES  
2929 E. Willow Street  
Long Beach, CA 90806  
Ph. (562) 570-2850  
Fax (562) 570-2861

FLEET SERVICES  
2600 Temple Avenue  
Long Beach, CA 90806  
Ph. (562) 570-5400  
Fax (562) 570-5414

TRAFFIC &  
TRANSPORTATION  
333 W. Ocean Blvd., 10<sup>th</sup> Floor  
Long Beach, CA 90802  
Ph. (562) 570-6331  
Fax (562) 570-7161

February, the Noise Office received 226 complaints compared to 239 complaints received during the same period in 2006.

Further analysis of the February noise complaints revealed the following:

- Total number of complainants: 57
- 61% (138 of 226) of the complaints were related to operations between 10:00 p.m. and 7:00 a.m.
- 15% (40 of 226) of the complainants reside in Seal Beach or Huntington Beach.

For the month of March, the Noise Office received 185 complaints compared to 171 complaints received during the same period in 2006.

Further analysis of the March noise complaints revealed the following:

- Total number of complainants: 52
- 63% (117 of 185) of the complaints were related to operations between 10:00 p.m. and 7:00 a.m.
- 10% (19 of 185) of the complainants reside in Seal Beach or Huntington Beach.

The above referenced information is displayed on the Airport's website ([www.lgb.org](http://www.lgb.org)).

**Southern California Regional Airport Authority Update** – The Southern California Regional Airport Authority (SCRAA) Board of Directors is scheduled to meet on June 14th, to consider input received from the City of Long Beach, Orange County, and others regarding suggested changes to the SCRAA Joint Powers Agreement, in the areas of governance, mission, responsibilities, voting/approval protocols, including the option of vacating the Joint Powers Agreement in favor of a structured Memorandum of Understanding. SCRAA staff (Los Angeles World Airports staff, until SCRAA obtains its own staff at some point in the future) has been working with staff from other interested parties, including the City of Long Beach via Long Beach Airport Bureau staff in coordination with the Office of the City Attorney, to develop options for SCRAA Board consideration. These options intend to address concerns expressed by Long Beach (Mayoral letters dated January 2, 2007, February 28, 2007, and by unanimous adoption of Resolution RES-07-0044 on April 3, 2007) and others. These options/alternatives will be made available for review in advance of the June 14th Board meeting.

TIMING CONSIDERATIONS

City Council action is not time critical.


FISCAL IMPACT

None.

SUGGESTED ACTION:

Approve recommendation.


Respectfully submitted,

  
CHRISTINE F. ANDERSEN  
DIRECTOR OF PUBLIC WORKS

CFA: SDJ: bp  
P:\ccltrs\fy0607\May\Airport Monthly Activity Reports

Attachments

APPROVED:

  
*for* \_\_\_\_\_  
GERALD R. MILLER  
CITY MANAGER



**City of Long Beach**  
Working Together to Serve

**Memorandum**

**Date:** Meeting Cancelled  
**To:** Airport Advisory Commission  
**From:** Dennis Rambeau, Noise Office Manager, Airport Bureau  
**Subject:** MONTHLY AIRPORT ACTIVITY REPORTS FOR FEBRUARY 2007

---

**Please find attached the following reports:**

- **Airport Activity Report**
- **Noise Complaint Report**
- **Plot of Complainants**
- **Late Night Activity**
- **Noise Violation Report**
- **Noise Violation List**



# MONTHLY AIRPORT ACTIVITY REPORT

## February 2007

### Current Month and Calendar Year To Date Statistics

	February			January through February		
	2007	2006	%Change	2007	2006	%Change
<b><u>Total Passenger Traffic</u></b>	201,218	202,456	-0.6%	412,251	433,299	-4.9%
<b><u>Enplaned Passengers</u></b>	<b><u>Load</u></b>	<b><u>Load</u></b>		<b><u>Load</u></b>	<b><u>Load</u></b>	
	<b><u>Factor</u></b>	<b><u>Factor</u></b>		<b><u>Factor</u></b>	<b><u>Factor</u></b>	
Alaska	59% 10,414	78% 8,431	23.5%	56% 18,578	70% 16,134	15.1%
US Airways/America West	66% 6,852	74% 7,811	-12.3%	59% 13,089	69% 15,554	-15.8%
American Airlines	0% 0	77% 6,248	-100.0%	0% 0	71% 17,442	-100.0%
Delta/Skywest	87% 4,358	0% 0		85% 8,744	0% 0	
JetBlue Airways	73% 79,014	82% 79,262	-0.3%	73% 165,298	82% 167,450	-1.3%
Total	71% 100,638	81% 101,752	-1.1%	70% 205,709	79% 216,580	-5.0%
<b><u>Airline Landings</u></b>	1,050	894	17.4%	2,181	1,942	12.3%
<b><u>Aircraft Operations (FAA)</u></b>						
Air + Commuter Carriers	1,958	1,969	-0.6%	4,143	4,290	-3.4%
Air Taxi & General Aviation	29,622	24,861	19.2%	59,460	51,344	15.8%
Military	106	57	86.0%	148	109	35.8%
Total	31,686	26,887	17.8%	63,751	55,743	14.4%
<b><u>Air Cargo</u></b>						
US Tons	3,668	4,055	-9.5%	7,712	8,217	-6.1%
Metric Tons	3,327	3,678	-9.5%	6,995	7,453	-6.1%

**Note:**

During the month, LGB airport had 41 allocated air carrier flight slots- Alaska (5), US Airways/America West (4), JetBlue (28), Airborne (1), FedEx (1), UPS (2) and 5 allocated commuter carrier flight slots - US Airways/America West (1), Delta (4). In addition, 20 commuter carrier flight slots- BAG (17) & Horizon (3) have been allocated & expected to start service by late this year.

**Definitions:**

**Total Passenger Traffic** – Total number of airline passengers both enplaned (departing) and deplaned (arriving).

**Aircraft Operations** – Aircraft takeoff, landing, or transition through the airspace controlled by the FAA's Long Beach air traffic control tower.

**Air Carrier** – A scheduled carrier, certificated under FAA Regulations (FAR) Parts 121, 125 or 135, max. takeoff weight of 75,000 lbs (passengers or cargo) or over.

**Commuter Carrier** - A scheduled carrier, certificated under FAA Regulations (FAR) Parts 121, 125 or 135, max. takeoff weight under 75,000 lbs

**Air Taxi** – Aircraft that provide public transportation of persons and/or property on-demand.

**General Aviation** – Aviation activity other than scheduled air carriers flights, flights by industrial operators or by charter and flights by public aircraft

**Air Cargo** – Cargo carried by aircraft, both inbound and outbound.



**LONG BEACH AIRPORT MONTHLY REPORT  
NOISE COMPLAINTS  
February 2007**

**Current Month and CY-T-D Statistics for Long Beach Airport**

	February 2007			CY-T-D 2007		
	2007	2006	%Change	2007	2006	%Change
<b><u>Air Carrier &amp; Commuter Complaints</u></b>						
Passenger & Cargo Aircraft	167	180	-7.2%	252	297	-15.2%
<b><u>Non-Commercial Complaints</u></b>						
Jets	43	38	13.2%	66	138	-52.2%
Props	13	16	-18.8%	17	23	-26.1%
Helicopters	3	5	-40.0%	7	9	-22.2%
Other	0	0		0	0	
Subtotal	<b>59</b>	<b>59</b>		<b>90</b>	<b>170</b>	<b>-47.1%</b>
<b>TOTAL NOISE COMPLAINTS</b>	<b>226</b>	<b>239</b>	<b>-5.4%</b>	<b>342</b>	<b>467</b>	<b>-26.8%</b>
<b><u>Airport Operations (FAA)</u></b>						
Air Carrier + Commuter Carriers	1,958	1,969	-0.6%	4,143	4,290	-3.4%
Air Taxi + General Aviation	29,622	24,861	19.2%	59,460	51,344	15.8%
Military Operations	106	57	86.0%	148	109	35.8%
<b>TOTAL AIRCRAFT OPERATIONS</b>	<b>31,686</b>	<b>26,887</b>	<b>17.8%</b>	<b>63,751</b>	<b>55,743</b>	<b>14.4%</b>

**Notes:**

**Number of Complainants: 57**

**61% (138 of 226) of the complaints were related to operations between 10pm and 7am**

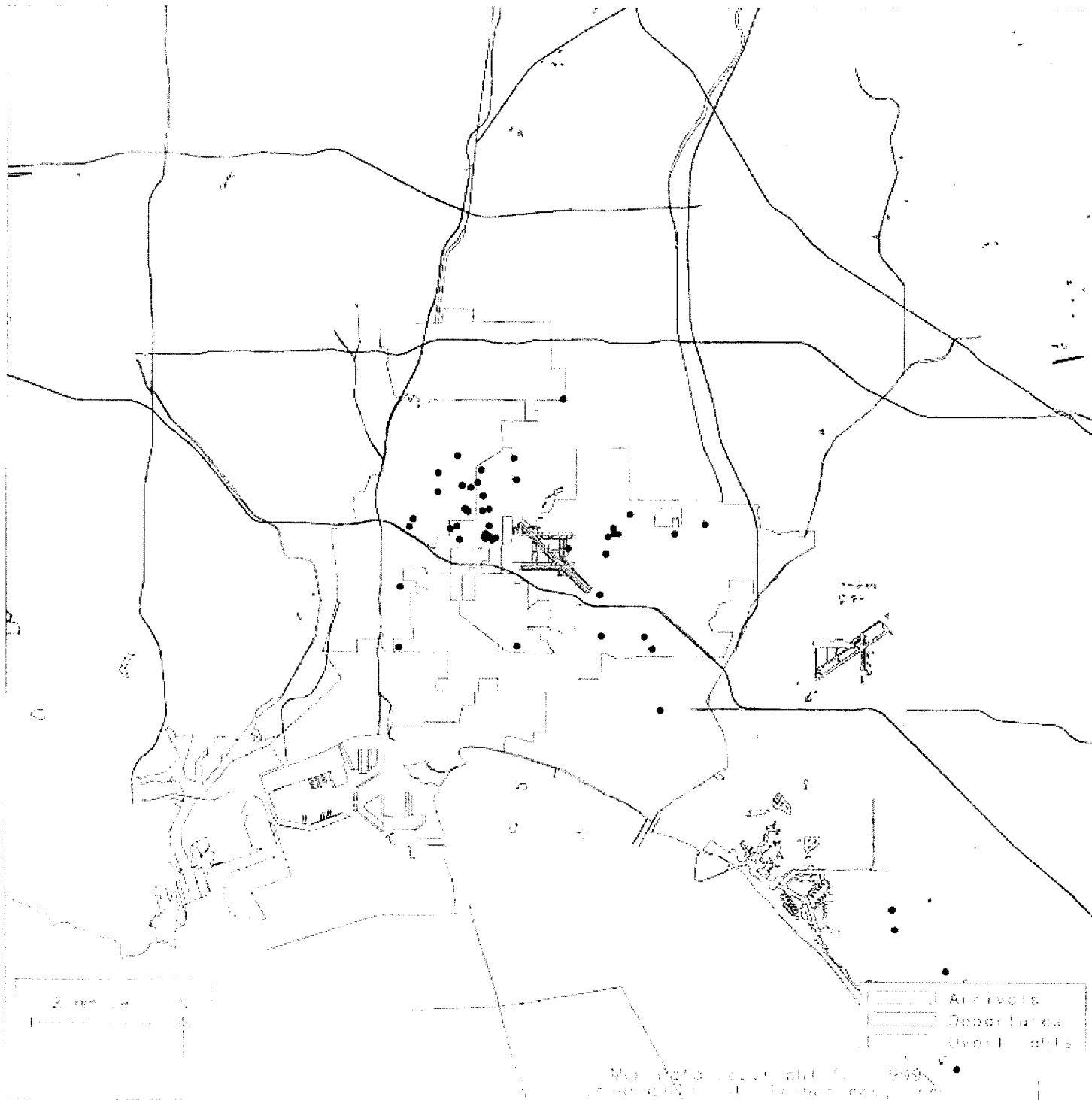
**15% ( 40 of 226) of the complaints came from complainants residing in Seal Beach or Huntington Beach**

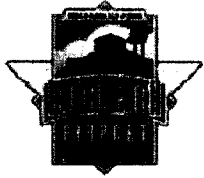
**\* City Noise Ordinance currently allows for 41 air carrier and 25 commuter carrier flight slots, for a total of 66 daily flights.**



LONG BEACH  
AIRPORT

Noise Complainants  
February 2007





**LONG BEACH AIRPORT MONTHLY REPORT**  
**COMMERCIAL LATE NIGHT ACTIVITY (10pm - 7am)**  
**February 2007**

**Current Month and CY-T-D Statistics for Long Beach Airport**

	February 2007			CY-T-D 2007		
	2007	2006	%Change	2007	2006	%Change
<b><u>Air Carrier &amp; Commuter Operations</u></b>	1,958	1,969	-0.6%	4,143	4,290	-3.4%
<b>10pm - 11pm Operations</b>						
Alaska	1	5	-80.0%	6	11	-45.5%
Delta/SkyWest	0	0		0	0	
DHL/Airborne	0	0		0	0	
FedEx	0	0		0	0	
JetBlue Airways	31	43	-27.9%	68	65	4.6%
UPS	0	0		1	0	
US Airways/America West	0	1		0	1	
<b>Total</b>	<b>32</b>	<b>49</b>	<b>-34.7%</b>	<b>75</b>	<b>77</b>	<b>-2.6%</b>
<b>11pm - 7am Operations</b>						
Alaska	0	0		0	0	
Delta/SkyWest	0	0		0	0	
DHL/Airborne	0	0		0	0	
FedEx	0	0		0	0	
JetBlue Airways	14	25	-44.0%	19	28	-32.1%
US Airways/America West	0	0		0	0	
UPS	0	0		0	0	
<b>Total</b>	<b>14</b>	<b>25</b>	<b>-44.0%</b>	<b>19</b>	<b>28</b>	<b>-32.1%</b>
<b>10 pm - 7 am Grand Total</b>	<b>46</b>	<b>74</b>	<b>-37.8%</b>	<b>94</b>	<b>105</b>	<b>-10.5%</b>

**Notes:**

1.4 % (32 of 2,185) of total commercial operations occurred between 10pm - 7am.

1.6 flights - Nightly average for ALL late night commercial flights, includes unanticipated delays.

0.5 flights - Nightly average for commercial flights after 11 PM.





## LONG BEACH AIRPORT MONTHLY REPORT NOISE VIOLATIONS

February 2007

Current Month and CY-T-D Statistics for Long Beach Airport  
February 2007

CY-T-D 2007

	2007	2006	%Change	2007	2006	%Change
<b><u>Air Carrier Violations</u></b>						
Alaska	0	0		0	1	
American Airlines	0	0		0	0	
DHL/Airborne	0	0		0	0	
FedEx	0	0		0	0	
JetBlue Airways*	13	24	-45.8%	18	27	-33.3%
UPS	0	1		0	1	
US Airways/America West	0	0		0	0	
<b>Total</b>	<b>13</b>	<b>25</b>	<b>-48.0%</b>	<b>18</b>	<b>29</b>	<b>-37.9%</b>
<b><u>Commuter Violations</u></b>						
Delta/SkyWest	1	0		1	0	
US Airways/America West	0	0		0	0	
<b>Total</b>	<b>1</b>	<b>0</b>		<b>1</b>	<b>0</b>	
<b><u>Non-Commercial Violations</u></b>						
All GA, Charter & other	17	21	-19.0%	33	50	-34.0%
<b>TOTAL NOISE VIOLATIONS</b>	<b>31</b>	<b>46</b>	<b>-32.6%</b>	<b>52</b>	<b>79</b>	<b>-34.2%</b>
<b><u>Airport Monetary Fines Issued</u></b>	<b>\$2,300</b>	<b>\$2,900</b>	<b>-20.7%</b>	<b>\$4,100</b>	<b>\$4,500</b>	<b>-8.9%</b>
<b><u>Consent Decree Fines Issued</u></b>	<b>\$75,000</b>	<b>\$135,000</b>	<b>-44.4%</b>	<b>\$90,000</b>	<b>\$144,000</b>	<b>-37.5%</b>
<b>TOTAL MONETARY FINES ISSUED</b>	<b>\$77,300</b>	<b>\$137,900</b>	<b>-43.9%</b>	<b>\$94,100</b>	<b>\$148,500</b>	<b>-36.6%</b>
<b><u>Airport Operations (FAA)</u></b>						
Air Carrier + Commuter Carriers	1,958	1,969	-0.6%	4,143	4,290	-3.4%
Air Taxi + General Aviation	29,622	24,861	19.2%	59,460	51,344	15.8%
Military Operations	106	57	86.0%	148	109	35.8%
<b>TOTAL AIRCRAFT OPERATIONS</b>	<b>31,686</b>	<b>26,887</b>	<b>17.8%</b>	<b>63,751</b>	<b>55,743</b>	<b>14.4%</b>

**Notes:**

0.1% (31 of 31,686) of the Airport's total aircraft operations (Commercial & GA) resulted in a noise violation.

0.7% ( 14 of 1958) of the Airport's Commercial operations (Commercial & Commuter) resulted in a noise violation.

1 of JetBlue's 11 pm - 7 am operations was within 5 minutes of 11 PM and therefore considered an unanticipated delay.



## LONG BEACH AIRPORT MONTHLY REPORT NOISE VIOLATIONS February 2007

OWNERNAME	DATE	TIME	A/D	RWY	A/C TYPE	RMTID	SEL	LIMIT	STATUS
Flight Investments LLC.	2/4/2007	1:02:57 AM	A	30	C550	10	86.6	79.0	VIOLATION
Wells Fargo Bank Northwest Na Trustee	2/4/2007	11:31:58 PM	A	30	G5	10	86.4	79.0	VIOLATION
Pacware Software Development Inc.	2/9/2007	11:44:34 PM	D	30	C310	9	81.3	79.0	VIOLATION
Flight Options Inc	2/9/2007	11:53:40 PM	A	30	BE40	10	93.3	79.0	VIOLATION
ACM Aviation, LLC	2/9/2007	11:57:44 PM	A	30	G5	10	88.6	79.0	VIOLATION
JetBlue Airways Corporation	2/14/2007	11:32:25 PM	A	30	A320	10	92.7	79.0	ALT ENF
JetBlue Airways Corporation	2/14/2007	11:49:45 PM	D	30	A320	9	94.7	79.0	ALT ENF
JetBlue Airways Corporation	2/14/2007	11:51:02 PM	D	30	A320	9	90.2	79.0	ALT ENF
JetBlue Airways Corporation	2/15/2007	12:25:16 AM	D	30	A320	9	88.2	79.0	ALT ENF
ASJET AVIATION INC.	2/15/2007	12:28:21 AM	A	30	LJ55	10	86.3	79.0	VIOLATION
ASJET AVIATION INC.	2/15/2007	12:38:37 AM	D	30	LJ55	9	84.4	79.0	VIOLATION
JetBlue Airways Corporation	2/15/2007	11:26:43 PM	D	30	A320	9	95.2	79.0	ALT ENF
Citation Ten LLC.	2/15/2007	11:29:01 PM	A	30	C750	10	87.3	79.0	VIOLATION
Invest-Air	2/15/2007	11:44:36 PM	A	30	C750	10	87.3	79.0	VIOLATION
JetBlue Airways Corporation	2/16/2007	12:09:39 AM	D	30	A320	9	93.6	79.0	ALT ENF
JetBlue Airways Corporation	2/16/2007	12:50:08 AM	A	30	A320	10	93.6	79.0	ALT ENF
JetBlue Airways Corporation	2/16/2007	1:30:42 AM	A	30	A320	10	93.1	79.0	ALT ENF
JetBlue Airways Corporation	2/16/2007	5:06:30 AM	A	30	A320	10	94.2	79.0	ALT ENF
JetBlue Airways Corporation	2/17/2007	12:08:04 AM	D	30	A320	9	94.7	79.0	ALT ENF
JetBlue Airways Corporation	2/17/2007	2:48:42 AM	A	30	A320	10	93.3	79.0	ALT ENF
JetBlue Airways Corporation	2/17/2007	5:16:15 AM	A	30	DC10	10	101	79.0	ALT ENF
JetBlue Airways Corporation	2/17/2007	11:06:41 PM	D	30	A320	9	92.9	79.0	ALT ENF
Excel ventures LLC	2/19/2007	5:31:35 AM	D	30	C560	9	86.3	79.0	VIOLATION
Victoria Racing LLC	2/21/2007	11:24:09 PM	A	30	LJ45	10	91.4	79.0	VIOLATION
Victoria Racing LLC	2/22/2007	1:42:56 AM	A	30	LJ45	10	84	79.0	VIOLATION
Sovereign Air LLC	2/22/2007	5:31:12 AM	A	30	LJ31	10	83.4	79.0	VIOLATION
King Air 928 LLC	2/22/2007	6:52:07 AM	A	30	BE20	10	92.9	90.0	VIOLATION
CITATIONSHARES SALES INC	2/23/2007	6:33:05 AM	A	30	C560	10	92.5	90.0	VIOLATION
Summit Supply Inc.	2/23/2007	11:34:48 PM	A	30	C560	10	86.5	79.0	VIOLATION
Skywest Airlines	2/24/2007	12:00:44 AM	A	30	CRJ2	10	90.6	79.0	VIOLATION
Flying M Llc	2/25/2007	6:33:32 AM	D	30	C650	9	94.2	90.0	VIOLATION
Private	2/26/2007	8:11:40 AM	D	25L	C337	5	99.4	95.0	VIOLATION
Private	2/28/2007	8:44:45 AM	D	25R	C182	6	95.3	92.0	VIOLATION



**City of Long Beach**  
Working Together to Serve

**Memorandum**

**Date:** April 19, 2007  
**To:** Airport Advisory Commission  
**From:** Dennis Rambeau, Noise Office Manager, Airport Bureau  
**Subject:** MONTHLY AIRPORT ACTIVITY REPORTS FOR MARCH 2007

---

**Please find attached the following reports:**

- **Airport Activity Report**
- **Noise Complaint Report**
- **Plot of Complainants**
- **Late Night Activity**
- **Noise Violation Report**
- **Noise Violation List**



## MONTHLY AIRPORT ACTIVITY REPORT March 2007

### Current Month and Calendar Year To Date Statistics

	March			January through March		
	2007	2006	%Change	2007	2006	%Change
<b><u>Total Passenger Traffic</u></b>	247,144	239,165	3.3%	659,395	672,464	-1.9%
<b><u>Enplaned Passengers</u></b>	<b><u>Load</u></b>	<b><u>Load</u></b>		<b><u>Load</u></b>	<b><u>Load</u></b>	
	<b><u>Factor</u></b>	<b><u>Factor</u></b>		<b><u>Factor</u></b>	<b><u>Factor</u></b>	
Alaska	56% 11,494	74% 8,914	28.9%	56% 30,072	72% 25,048	20.1%
US Airways/America West	82% 9,515	77% 8,916	6.7%	67% 22,604	72% 24,470	-7.6%
American Airlines	0% 0	82% 6,919	-100.0%	0% 0	74% 24,361	-100.0%
Delta/Skywest	91% 5,236	90% 3,206	63.3%	89% 13,980	90% 3,206	336.1%
JetBlue Airways	82% 97,998	90% 92,789	5.6%	76% 263,296	85% 260,239	1.2%
Total	79% 124,243	87% 120,744	2.9%	73% 329,952	82% 337,324	-2.2%
<b><u>Airline Landings</u></b>	1,179	1,036	13.8%	3,360	2,978	12.8%
<b><u>Aircraft Operations (FAA)</u></b>						
Air + Commuter Carriers	2,245	2,160	3.9%	6,388	6,480	-1.4%
Air Taxi & General Aviation	37,886	27,850	36.0%	97,346	79,194	22.9%
Military	106	81	30.9%	254	190	33.7%
Total	40,237	30,091	33.7%	103,988	85,864	21.1%
<b><u>Air Cargo</u></b>						
US Tons	4,306	4,840	-11.0%	12,018	13,056	-7.9%
Metric Tons	3,906	4,390	-11.0%	10,901	11,842	-7.9%

**Note:**

During the month, LGB airport had 41 allocated air carrier flight slots- Alaska (5), US Airways/America West (4), JetBlue (28), Airborne (1), FedEx (1), UPS (2) and 5 allocated commuter carrier flight slots - US Airways/America West (1), Delta (4).

In addition, 17 commuter carrier flight slots have been allocated to BAG & expected to start service by late this year.

**Definitions:**

**Total Passenger Traffic** – Total number of airline passengers both enplaned (departing) and deplaned (arriving).

**Aircraft Operations** – Aircraft takeoff, landing, or transition through the airspace controlled by the FAA's Long Beach air traffic control tower.

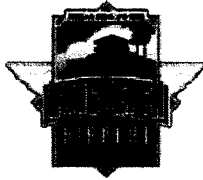
**Air Carrier** – A scheduled carrier, certificated under FAA Regulations (FAR) Parts 121, 125 or 135, max. takeoff weight of 75,000 lbs (passengers or cargo) or over.

**Commuter Carrier** - A scheduled carrier, certificated under FAA Regulations (FAR) Parts 121, 125 or 135, max. takeoff weight under 75,000 lbs

**Air Taxi** – Aircraft that provide public transportation of persons and/or property on-demand.

**General Aviation** – Aviation activity other than scheduled air carriers flights, flights by industrial operators or by charter and flights by public aircraft

**Air Cargo** – Cargo carried by aircraft, both inbound and outbound.



## LONG BEACH AIRPORT MONTHLY REPORT NOISE COMPLAINTS

March 2007

### Current Month and CY-T-D Statistics for Long Beach Airport

	March 2007			CY-T-D 2007		
	2007	2006	%Change	2007	2006	%Change
<b><u>Air Carrier &amp; Commuter Complaints</u></b>						
Passenger & Cargo Aircraft	133	101	31.7%	385	398	-3.3%
<b><u>Non-Commercial Complaints</u></b>						
Jets	32	45	-28.9%	98	183	-46.4%
Props	12	9	33.3%	29	32	-9.4%
Helicopters	8	16	-50.0%	15	25	-40.0%
Other	0	0		0	0	
Subtotal	<b>52</b>	<b>70</b>		<b>142</b>	<b>240</b>	-40.8%
<b>TOTAL NOISE COMPLAINTS</b>	<b>185</b>	<b>171</b>	8.2%	<b>527</b>	<b>638</b>	-17.4%
<b><u>Airport Operations (FAA)</u></b>						
Air Carrier + Commuter Carriers	2,245	2,160	3.9%	6,388	6,480	-1.4%
Air Taxi + General Aviation	37,886	27,850	36.0%	97,346	79,194	22.9%
Military Operations	106	81	30.9%	254	190	33.7%
<b>TOTAL AIRCRAFT OPERATIONS</b>	<b>40,237</b>	<b>30,091</b>	33.7%	<b>103,988</b>	<b>85,864</b>	21.1%

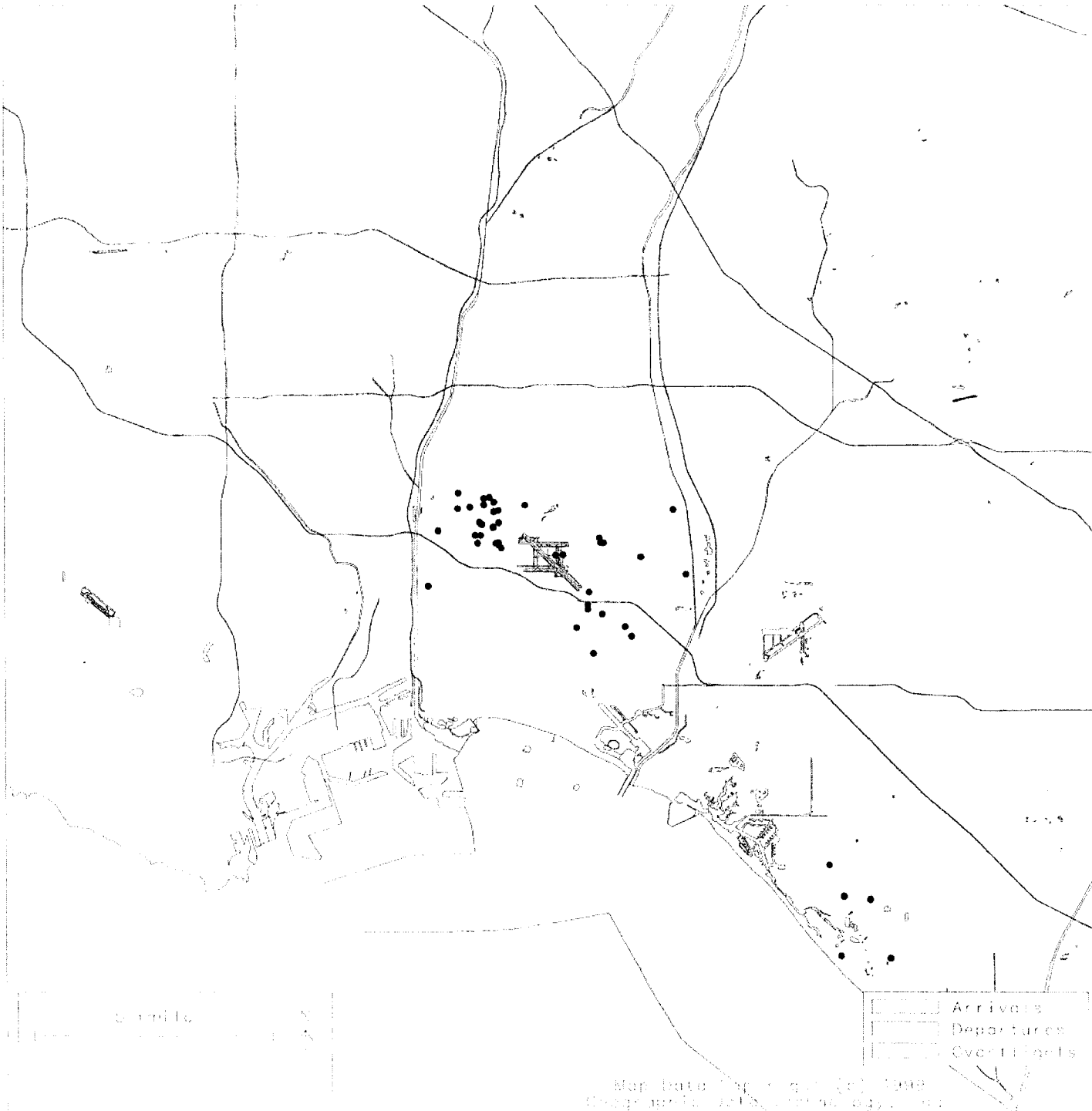
**Notes:**

Number of Complainants: 52

63% (117 of 185) of the complaints were related to operations between 10pm and 7am

10% ( 19 of 185) of the complaints came from complainants residing in Seal Beach or Huntington Beach

\* City Noise Ordinance currently allows for 41 air carrier and 25 commuter carrier flight slots, for a total of 66 daily flights.



LONG BEACH  
AIRPORT

Noise Complainants  
March 2007



**LONG BEACH AIRPORT MONTHLY REPORT**  
**COMMERCIAL LATE NIGHT ACTIVITY (10pm - 7am)**  
**March 2007**

**Current Month and CY-T-D Statistics for Long Beach Airport**

	March 2007			CY-T-D 2007		
	2007	2006	%Change	2007	2006	%Change
<b><u>Air Carrier &amp; Commuter Operations</u></b>	2,245	2,160	3.9%	6,388	6,480	-1.4%
<b>10pm - 11pm Operations</b>						
Alaska	5	2	150.0%	11	13	-15.4%
Delta/SkyWest	0	0		0	0	
DHL/Airborne	0	0		0	0	
FedEx	0	0		0	0	
JetBlue Airways	37	24	54.2%	105	89	18.0%
UPS	0	0		1	0	
US Airways/America West	0	0		0	1	
<b>Total</b>	<b>42</b>	<b>26</b>	<b>61.5%</b>	<b>117</b>	<b>103</b>	<b>13.6%</b>
<b>11pm - 7am Operations</b>						
Alaska	0	0		0	0	
Delta/SkyWest	0	0		0	0	
DHL/Airborne	0	0		0	0	
FedEx	0	0		0	0	
JetBlue Airways	5	2	150.0%	24	30	-20.0%
US Airways/America West	0	0		0	0	
UPS	0	0		0	0	
<b>Total</b>	<b>5</b>	<b>2</b>	<b>150.0%</b>	<b>24</b>	<b>30</b>	<b>-20.0%</b>
<b>10 pm - 7 am Grand Total</b>	<b>47</b>	<b>28</b>	<b>67.9%</b>	<b>141</b>	<b>133</b>	<b>6.0%</b>

**Notes:**

1.9 % (42 of 2,245) of total commercial operations occurred between 10pm - 7am.

1.5 flights - Nightly average for ALL late night commercial flights, includes unanticipated delays.

0.16 flights - Nightly average for commercial flights after 11 PM.



## LONG BEACH AIRPORT MONTHLY REPORT NOISE VIOLATIONS

March 2007

Current Month and CY-T-D Statistics for Long Beach Airport  
March 2007

	March 2007			CY-T-D 2007		
	2007	2006	%Change	2007	2006	%Change
<b><u>Air Carrier Violations</u></b>						
Alaska	0	0		0	1	
American Airlines	0	0		0	0	
DHL/Airborne	0	0		0	0	
FedEx	0	0		0	0	
JetBlue Airways	7	1		25	28	-10.7%
UPS	0	1		0	1	
US Airways/America West	0	1		0	0	
<b>Total</b>	<b>7</b>	<b>3</b>	<b>133.3%</b>	<b>25</b>	<b>29</b>	<b>-13.8%</b>
<b><u>Commuter Violations</u></b>						
Delta/SkyWest	0	0		1	0	
US Airways/America West	0	0		0	0	
<b>Total</b>	<b>0</b>	<b>0</b>		<b>1</b>	<b>0</b>	
<b><u>Non-Commercial Violations</u></b>						
All GA, Charter & other	14	21	-33.3%	47	71	-33.8%
<b>TOTAL NOISE VIOLATIONS</b>	<b>21</b>	<b>24</b>	<b>-12.5%</b>	<b>73</b>	<b>100</b>	<b>-27.0%</b>
<b><u>Airport Monetary Fines Issued</u></b>	<b>\$900</b>	<b>\$2,200</b>	<b>-59.1%</b>	<b>\$5,000</b>	<b>\$6,700</b>	<b>-25.4%</b>
<b><u>Consent Decree Fines Issued</u></b>	<b>\$30,000</b>	<b>\$6,000</b>	<b>400.0%</b>	<b>\$120,000</b>	<b>\$150,000</b>	<b>-20.0%</b>
<b>TOTAL MONETARY FINES ISSUED</b>	<b>\$30,900</b>	<b>\$8,200</b>	<b>276.8%</b>	<b>\$125,000</b>	<b>\$156,700</b>	<b>-20.2%</b>
<b><u>Airport Operations (FAA)</u></b>						
Air Carrier + Commuter Carriers	2,245	2,160	3.9%	6,388	6,480	-1.4%
Air Taxi + General Aviation	37,886	27,850	36.0%	97,346	79,194	22.9%
Military Operations	106	81	30.9%	254	190	33.7%
<b>TOTAL AIRCRAFT OPERATIONS</b>	<b>40,237</b>	<b>30,091</b>	<b>33.7%</b>	<b>103,988</b>	<b>85,864</b>	<b>21.1%</b>

**Notes:**

0.05% (21 of 40,237) of the Airport's total aircraft operations (Commercial & GA) resulted in a noise violation.

0.3% ( 7 of 2245) of the Airport's Commercial operations (Commercial & Commuter) resulted in a noise violation.

2 of JetBlue's 7 violations were unexcused unanticipated delay requests.





## LONG BEACH AIRPORT MONTHLY REPORT NOISE VIOLATIONS March 2007

OWNERNAME	DATE	TIME	A/D	RWY	A/C TYPE	RMTID	SEL	LIMIT	STATUS
JetBlue Airways Corporation	3/2/2007	1:30:13 AM	A	25R	A320	1	91.2	79.0	ALT ENF
Vertical Corp	3/2/2007	5:17:16 AM	A	30	AS35	10	82.1	79.0	VIOLATION
JetBlue Airways Corporation	3/3/2007	1:24:06 AM	A	30	A320	10	92.6	79.0	ALT ENF
Chipola Aviation Inc.	3/6/2007	5:31:51 AM	D	30	LJ35	9	87	79.0	VIOLATION
Berger Dean Marketing LLC.	3/7/2007	11:29:50 PM	A	30	G2	10	90.4	79.0	VIOLATION
Wilmington Trust Company Trustee	3/8/2007	11:20:39 PM	A	30	C525	10	86.3	79.0	VIOLATION
Private	3/11/2007	11:21:02 PM	D	12	SR22	10	83.5	79.0	VIOLATION
ASJET AVIATION INC.	3/14/2007	11:22:17 PM	D	30	LJ55	9	83.9	79.0	VIOLATION
Pelican Development II LLC	3/16/2007	11:15:09 PM	A	30	H25B	10	89.8	79.0	VIOLATION
JetBlue Airways Corporation	3/16/2007	11:23:59 PM	A	30	A320	10	93.6	79.0	ALT ENF
Private	3/20/2007	12:04:00 AM	A	30	PA44	10	82.8	79.0	VIOLATION
Wilmington Trust Company Trustee	3/20/2007	11:38:34 PM	A	30	G5	10	88.3	79.0	VIOLATION
JetBlue Airways Corporation	3/21/2007	11:14:18 PM	D	30	A320	9	92.9	79.0	ALT ENF
JetBlue Airways Corporation	3/23/2007	10:16:24 PM	D	30	A320	9	96.2	90.0	VIOLATION
Private	3/23/2007	11:51:55 PM	D	30	C172	9	85.9	79.0	VIOLATION
M/V FORGER INC.	3/24/2007	12:52:06 AM	A	30	C441	10	83.9	79.0	VIOLATION
Silverlake Aviation Inc.	3/25/2007	11:17:21 AM	D	25R	BE55	6	95.6	92.0	VIOLATION
Jet Makers Inc.	3/25/2007	6:45:38 PM	D	30	LJ25	9	106	102.5	VIOLATION
JetBlue Airways Corporation	3/28/2007	11:12:26 PM	A	30	A320	10	93.5	79.0	ALT ENF
Aries Aviation LLC	3/28/2007	11:21:17 PM	A	30	BE30	10	85.6	79.0	VIOLATION
JetBlue Airways Corporation	3/31/2007	10:13:13 PM	D	30	A320	9	94.5	90.0	VIOLATION