

35313

FIRST AMENDMENT TO IN BUILDING RADIO DISTRIBUTION AGREEMENT

This First Amendment to In Building Radio Distribution Agreement (“Amendment”) is hereby entered into by and between Los Angeles SMSA Limited Partnership, a California limited partnership dba Verizon Wireless (“Licensee”) and the City of Long Beach (“Licensor”).

A. Licensee and Licensor are parties to that certain In Building Radio Distribution Agreement last executed on July 30, 2019 (the “**Agreement**”) for the installation, maintenance and operation by Licensee of a distributed antenna system (“**System**”) at Licensor’s property located at 411 and 415 West Ocean Boulevard, Long Beach, California (“**Property**”).

B. Licensee and Licensor now desire to amend the Agreement to permit Licensee to modify the System and install additional equipment in connection with expanding coverage at Public Safety Parking Structure located at 115 Chestnut Avenue, Long Beach, California, also owned by Licensor and to be categorized as Property in accordance with this Agreement.

NOW, THEREFORE, in consideration of the facts contained in the Recitals above, the mutual covenants and conditions below, and other good and valuable consideration, the receipt and sufficiency of which are hereby acknowledged, the parties agree as follows:

1. **Equipment.** The in-building equipment shall be expanded to include the equipment, antennas, repeaters, amplifiers, base station equipment, cables, wiring, and associated network devices as described and depicted in Attachment 1 attached hereto and incorporated herein by this reference.

2. **Property.** Licensor and Licensee acknowledge and agree that the definition of “Property” shall hereinafter include that certain real property located at 115 Chestnut Avenue, Long Beach, California.


3. **Entire Amendment.** Except as specifically modified by this Amendment, all of the terms and conditions of the Agreement shall remain in full force and effect. In the event of a conflict between any term or provision of the Agreement and this Amendment, the terms and provisions of this Amendment shall control. Any capitalized terms used in this Amendment that are not defined herein shall have the meanings given those terms in the Agreement. All captions are for reference purposes only and shall not be used in the construction or interpretation of this Amendment.

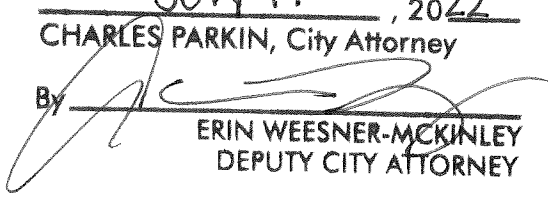
[Signatures appear on next page]

IN WITNESS WHEREOF, Verizon Wireless and Licensor have caused this Amendment to be executed by each party's duly authorized representative effective as of the date last written below.

LICENSOR:

City of Long Beach


By: 
Name: Tom Modica
Title: City Manager
Date: July 21, 2022

APPROVED AS TO FORM
July 19, 2022
CHARLES PARKIN, City Attorney
By: 
ERIN WEESNER-MCKINLEY
DEPUTY CITY ATTORNEY

LICENSEE:

Los Angeles SMSA Limited Partnership, a
California limited partnership dba Verizon Wireless

By: AirTouch Cellular Inc., its General Partner

By: 
Name: Jill Flynn
Title: Senior Real Estate Manager
Date: 07-12-2022

Attachment 1

Equipment List

Licensor Name: City of Long Beach

Property Address: 411 and 415 West Ocean Boulevard and 115 Chestnut Avenue, Long Beach, California

See attached

Equipment List Report

Project name: Long Beach PD Garage
Project creation date: 2/15/2021

Design company: Enhanced Cellular Design
Designer: CN

Type	Manufacturer	Model	Description	Inventory#	Qty
2217-	Ericsson	Radio 2217 - 2x20W	Ericsson Radio 2217 - 2x20 watts	N/A	2
Antenna	Galtronics	PEAR S5490i - 4.3-10 DIN	Directional Outdoor/In-Building Antenna, V-Pol: 698-2700 MHz, 1x 4.3-10 DIN Female with Cable - P/N: 02130261-05490	N/A	1
Antenna	Galtronics	PEAR GI0801-T6971 Pigtail - 4.3-10 DIN(F)	Small Form Factor Wideband SISO Antenna, 617-4200 MHz, 1x Pigtail 4.3-10 DIN(F). Omni directional antenna for in-building coverage applications such as DAS. Wide band SISO antenna for 5G coverage in 600MHz - 3.5GHz	N/A	14
Cable	Times Microwave Systems	SPF25043M43M 3.0F	3ft - 50 Ohm Low Loss, Low PIM Fire Retardant Coaxial Jumper Cable	N/A	48
Cable	CommScope	LDF4-50A	HELIAX® Low Density Foam Coaxial Cable, corrugated copper, 1/2 in, black PE jacket	N/A	1521.46 feet
Cable	Times Microwave Systems	SPO25043M43M R3.0F	3ft - 50 Ohm Low Loss, Low PIM Outdoor Rated Coaxial Jumper Cable	N/A	7
Connector	CommScope	L4HM-D	4.3-10 Male for 1/2 in AL4RPV-50, LDF4-50A, HL4RPV-50 cable	N/A	48
Hybrid Matrix	Microlab/FXR	CM-141E	Hybrid Matrix, Ultra-wideband 4x4, 617-5,925 MHz, 100W/input, 4.3-10 Connectors, Low PIM <-16dBc, IP67, <Last Modified: 06-15-21>	N/A	1
Splitter	Westell	CS64-001-024LP (SPW2-600-6G/4310)	Wilkinson Style 2 Way power Divider, -161 PIM Low Power 50W (600-6000 MHz) 4.3-10 female	CS64-001-024LP	1
Splitter	Westell	CS65-004-084 (DC8/575-6G/4310)	Directional Coupler 8dB, -161dBc PIM, 4.3-10, 575-6000MHz	CS65-004-084	1
Splitter	Westell	CS65-007-154 (DC15/575-6G/4310)	Directional Coupler 15dB, -161dBc PIM, 4.3-10, 575-6000MHz	CS65-007-154	1
Splitter	Westell	CS65-001-054 (DC5/575-6G/4310)	Directional Coupler 5dB, -161dBc PIM, 4.3-10, 575-6000MHz	CS65-001-054	5
Splitter	Westell	CS65-005-104 (DC10/575-6G/4310)	Directional Coupler 10dB, -161dBc PIM, 4.3-10, 575-6000MHz	CS65-005-104	3
Splitter	Westell	CS65-002-064 (DC6/575-6G/4310)	Directional Coupler 6dB, -161dBc PIM, 4.3-10, 575-6000MHz	CS65-002-064	1

Verizon / 700 MHz - LTE / 1 Sectors
Verizon / 1900 MHz - PCS - LTE / 1 Sectors
Verizon / 2100 MHz - AWS - LTE / 1 Sectors

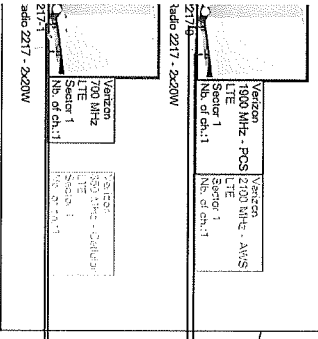
Calculations Legend
Verizon - 700 MHz - LTE
Verizon - 1900 MHz - PCS - LTE
Verizon - 2100 MHz - AWS - LTE
Verizon - 700 MHz - LTE
Verizon - 1900 MHz - PCS - LTE
Verizon - 2100 MHz - AWS - LTE
Verizon - 700 MHz - LTE
Verizon - 1900 MHz - PCS - LTE
Verizon - 2100 MHz - AWS - LTE

Kios Legend
LDFA-50A
SPT2504M4M3A.0P
SPT2504M4M3R3.0P

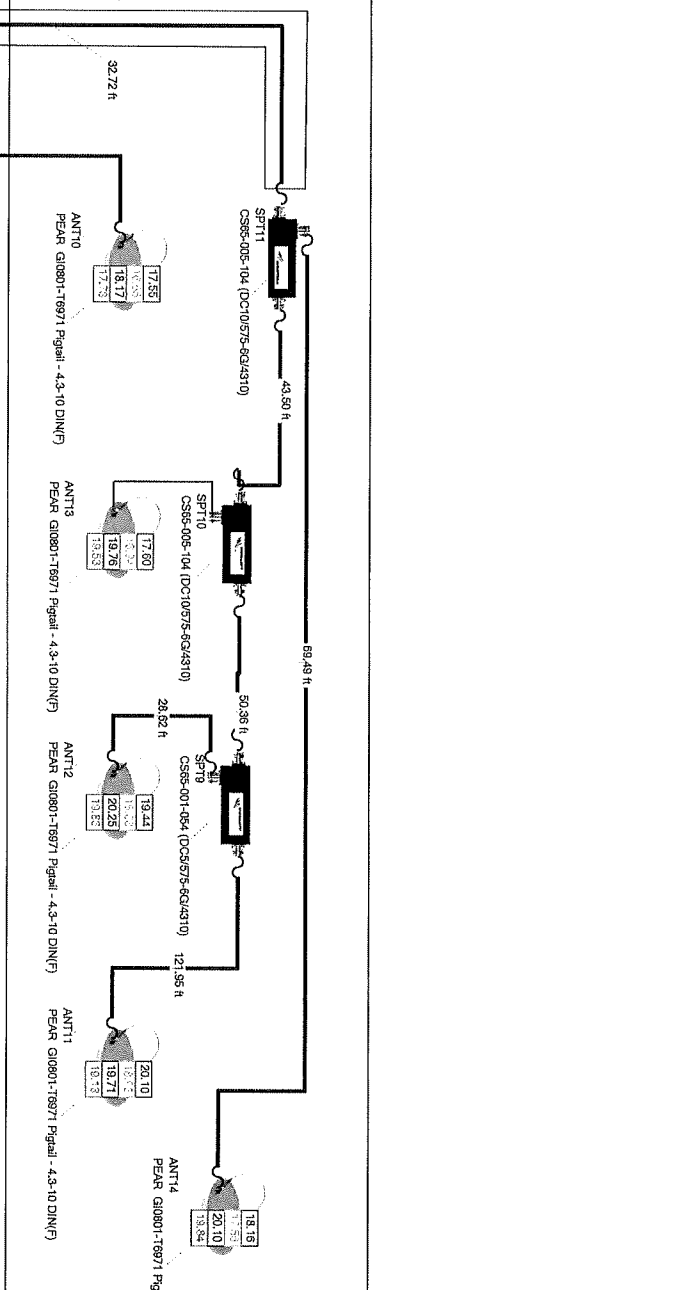
Only vertical riser shown, reference layout plans for horizontal conduit details see P1 Level.

2" EMT riser between floors using existing core

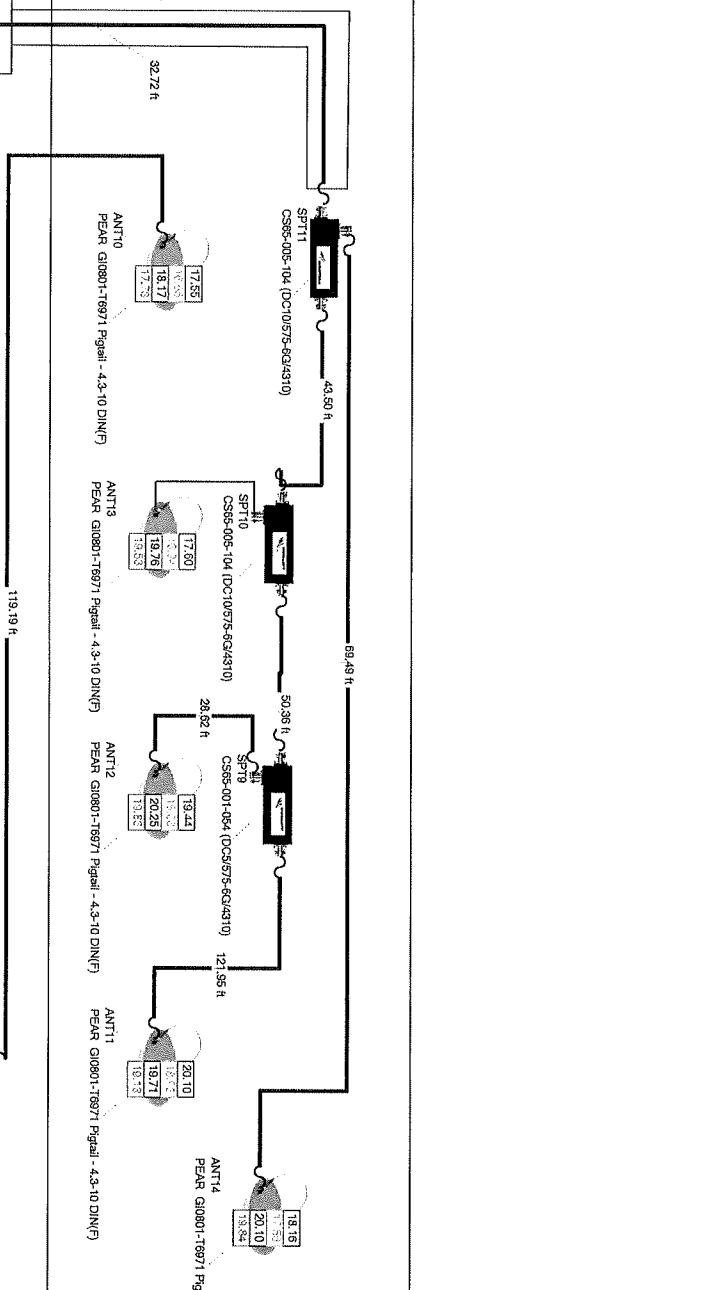
Arizona supplied equipment, located on P1 level of garage in IDF room. Demarkation joint is output of female 4-3-10 for mote radio head.



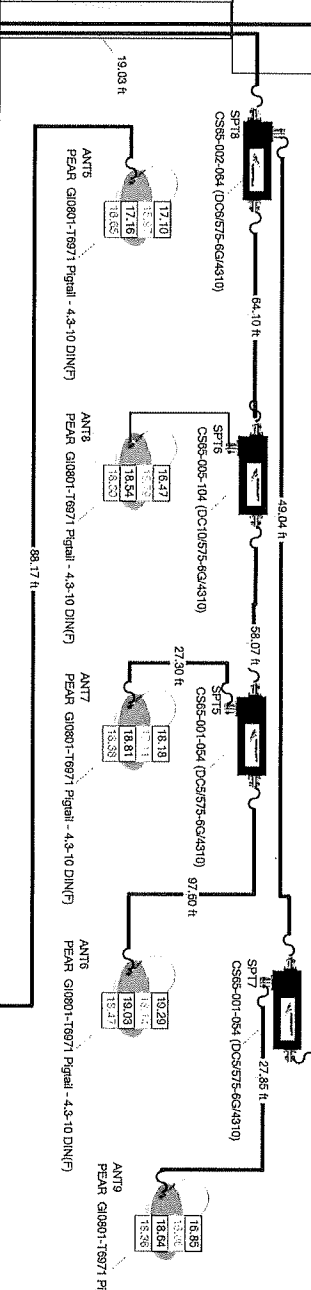
P3 Level



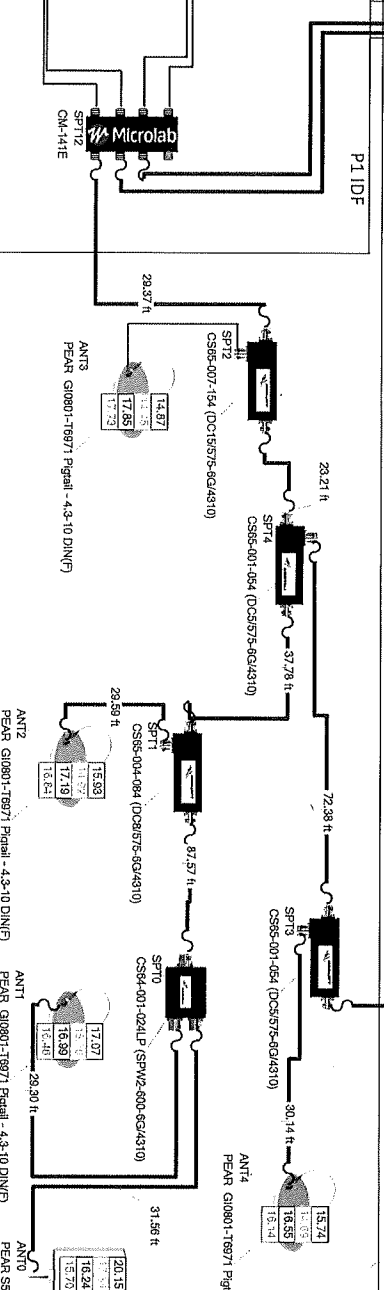
P4 Level



P2 Level



P1 Level



Revision history	CN
Rev 1 7/26/2021	CN
Rev 2 11/5/2021	CN
Updated to RFR and added conduit details	CN
Rev 3 11/17/2021	CN
Removed P1 Level equipment	CN
Project name	Long Beach PD Garage
Designer name	CN
Part name	Design plan

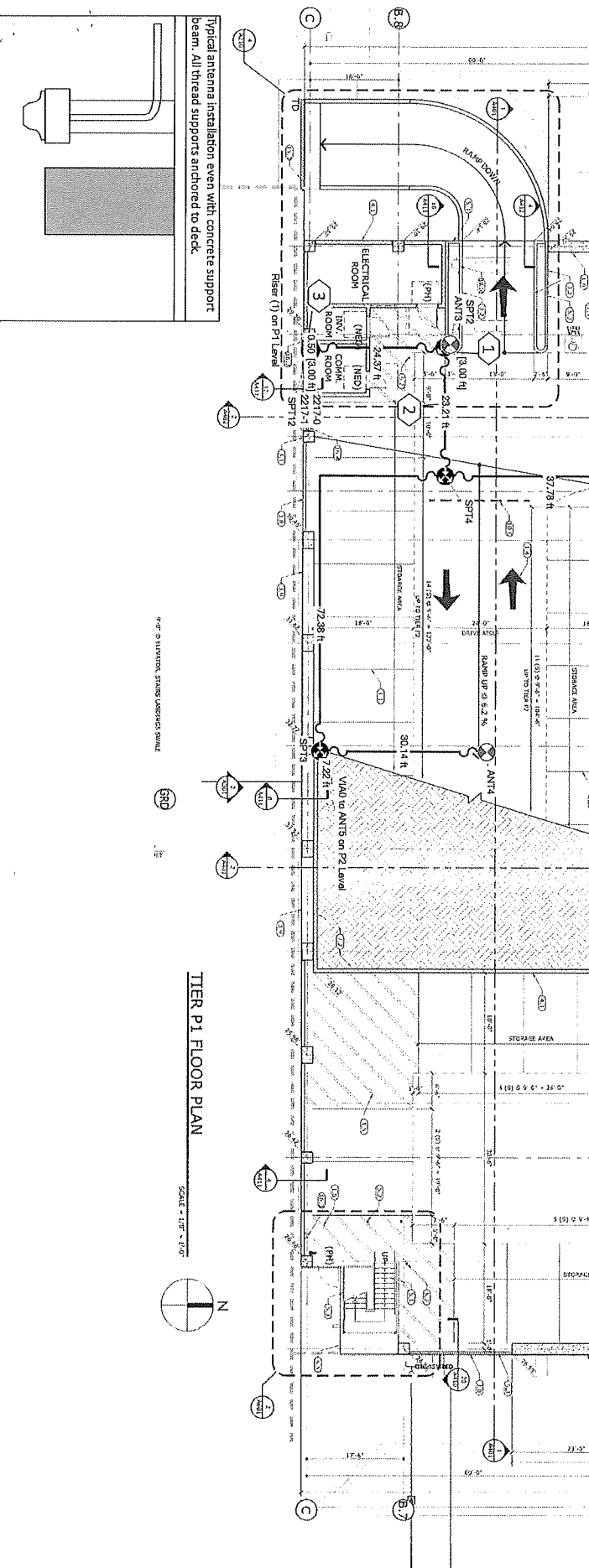
- Antenna - 700 MHz - LTE / 1 Sectors
- Antenna - 700 MHz - LTE
- Antenna - 800 MHz - Cellular - LTE
- Antenna - 900 MHz - PCS - LTE
- Antenna - 1900 MHz - PCS - LTE / 1 Sectors
- Antenna - 2100 MHz - AWS - LTE / 1 Sectors
- Antenna - 2100 MHz - AWS - LTE

- Cellular Legend
- Antenna - 700 MHz - LTE
- Antenna - 800 MHz - Cellular - LTE
- Antenna - 900 MHz - PCS - LTE
- Antenna - 1900 MHz - PCS - LTE
- Antenna - 2100 MHz - AWS - LTE

- Antenna Legend
- Antenna
- Hybrid Mux
- Riser
- Splitter
- Via

- Notes
- Antenna
- Hybrid Mux
- Riser
- Splitter
- Via

NOTES:
 - 12X12X6" NEMA 1 1-Box
 - 1 1/2" EMT
 - 2" EMT



TIER P1 FLOOR PLAN

SCALE - 1/8" = 1'-0"



Typical antenna installation even with concrete support beam. All thread supports anchored to deck.

Revision	Number	Description
1	7/25/2021	Initial System Design
2	7/25/2021	Updated to reflect on deck console detail
3	7/25/2021	Removed P1 Level equipment
Project Name: Long Beach PD Garage Designer Name: CN Sheet Name: P1 Level Date: 2/15/2021		

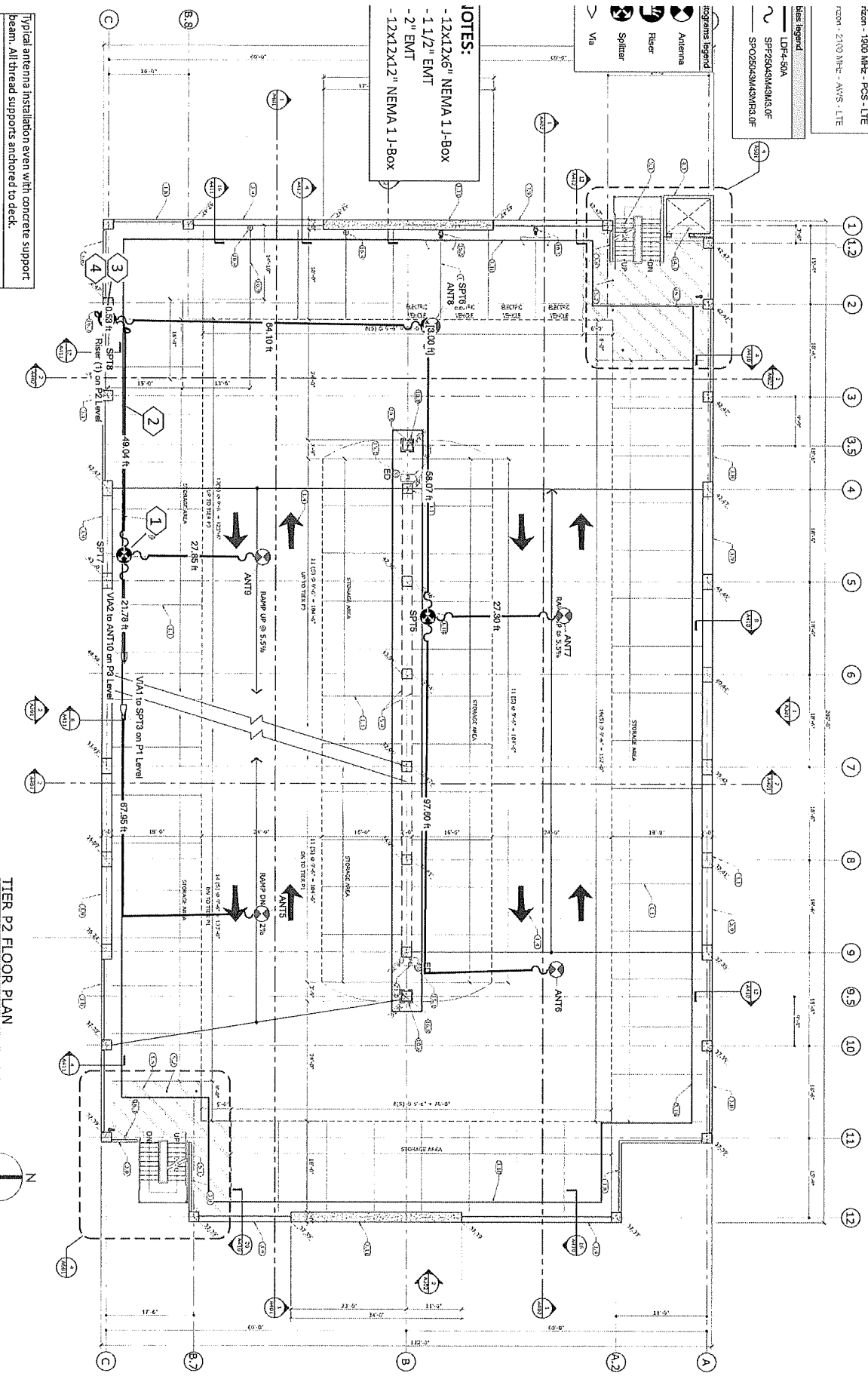
- Room / 700 MHz - LTE / 1 Sector
- Room / 1000 MHz - PCS - LTE / 1 Sector
- Room / 2100 MHz - AWS - LTE / 1 Sector

- Antenna
- Riser
- Splitter
- Via

- Antenna
- Riser
- Splitter
- Via

- Antenna
- Riser
- Splitter
- Via

NOTES:
 -12x12x6" NEMA 1 J-BOX
 -1 1/2" EMT
 -2" EMT
 -12x12x12" NEMA 1 J-BOX

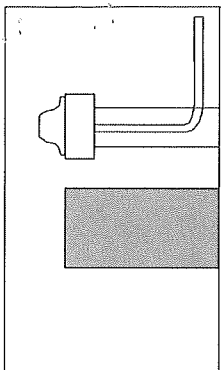


TIER P2 FLOOR PLAN

SCALE = 1/16" = 1'-0"



Typical antenna installation even with concrete support beam. All thread supports anchored to deck.



Indoor prediction legend

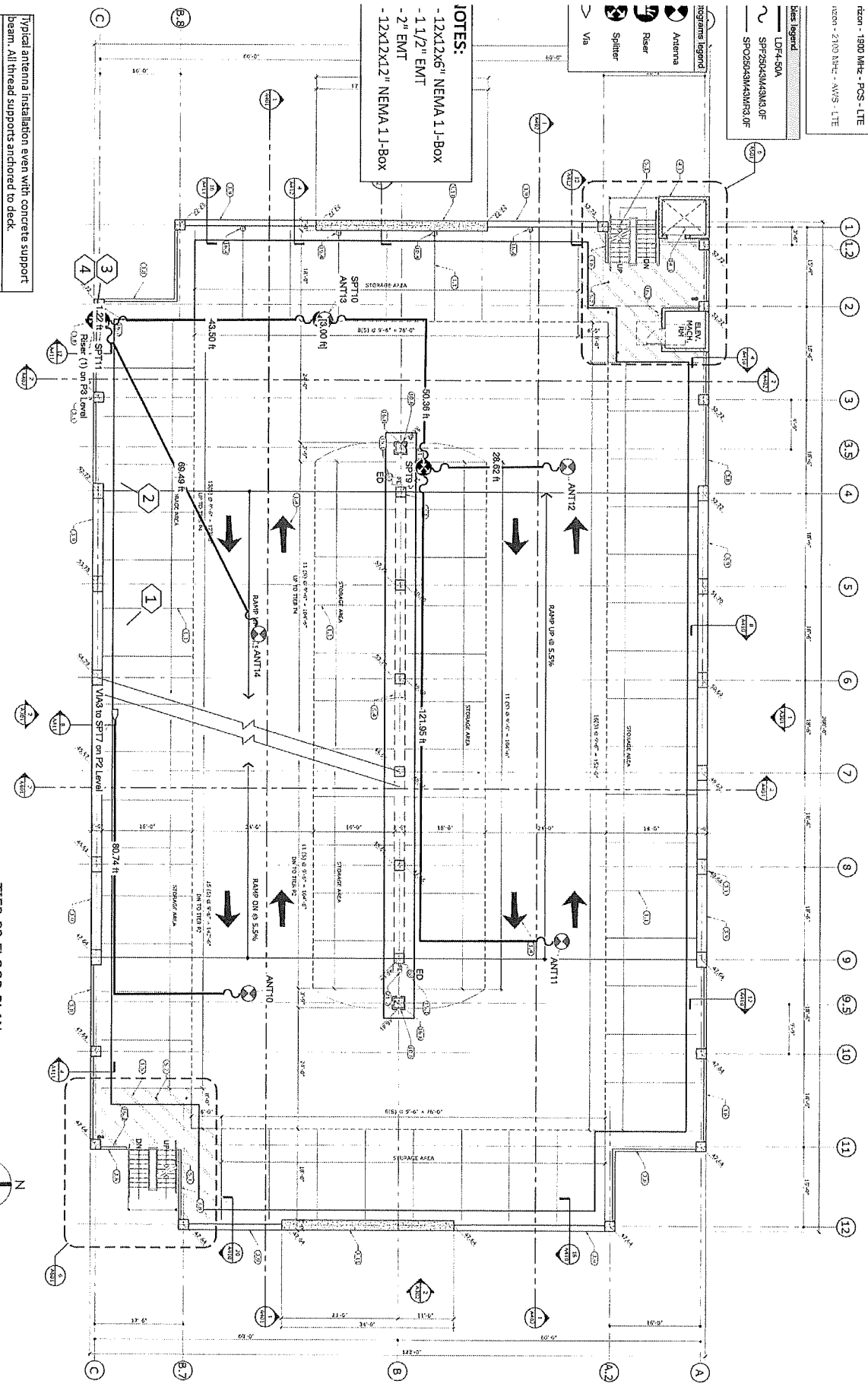
Project Name	Long Beach, PD Garage
Design Date	CN
Sheet Name	P2 Level
Revision	
Author	
Checked	
Design	
Drawn	
Scale	
Date	2/15/2021

- Room / 700 MHz - LTE / 1 Sector
- Room / 1900 MHz - PCS - LTE
- Room / 1900 MHz - PCS - LTE / 1 Sector
- Room / 2100 MHz - AWS - LTE / 1 Sector
- Room / 2100 MHz - AWS - LTE / 1 Sector

- Antenna
- Riser
- Splitter
- Via

- Blue Legend
- LD-F-50A
- SPT25024M43M3.0F
- SPT25024M43M3.0F

NOTES:
 -12X12X6" NEMA 1 J-Box
 -1 1/2" EMT
 -2" EMT
 -12X12X12" NEMA 1 J-Box



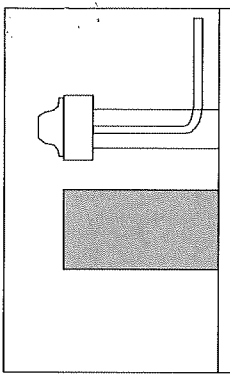
TIER P3 FLOOR PLAN

SCALE = 1/8" = 1'-0"

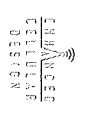


3" x 6" x 6" ELEVATION STUDY LANDING SWALL.

Typical antenna installation even with concrete support beam. All thread supports anchored to deck.



Indoor Prediction Legend

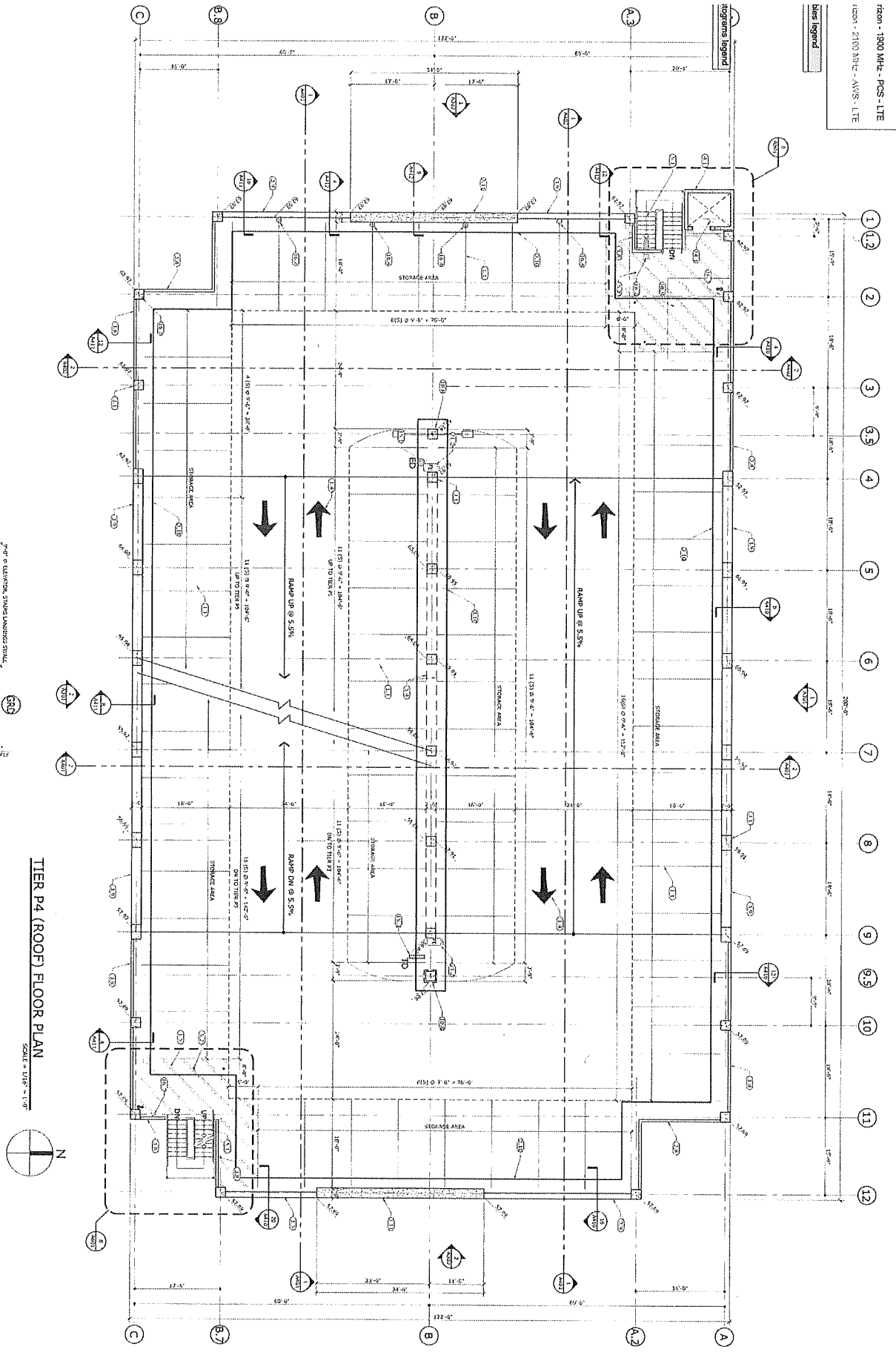


Enhanced Cellular Design

Project Name	Long Beach PD Garage
Designer	CN
Room	P3 Level
Revision	
Revision 1	11/17/2021 CN
Revision 2	11/17/2021 CN
Revision 3	11/17/2021 CN
Revision 4	11/17/2021 CN
Revision 5	11/17/2021 CN
Revision 6	11/17/2021 CN
Revision 7	11/17/2021 CN
Revision 8	11/17/2021 CN
Revision 9	11/17/2021 CN
Revision 10	11/17/2021 CN
Revision 11	11/17/2021 CN
Revision 12	11/17/2021 CN
Revision 13	11/17/2021 CN
Revision 14	11/17/2021 CN
Revision 15	11/17/2021 CN
Revision 16	11/17/2021 CN
Revision 17	11/17/2021 CN
Revision 18	11/17/2021 CN
Revision 19	11/17/2021 CN
Revision 20	11/17/2021 CN
Revision 21	11/17/2021 CN
Revision 22	11/17/2021 CN
Revision 23	11/17/2021 CN
Revision 24	11/17/2021 CN
Revision 25	11/17/2021 CN
Revision 26	11/17/2021 CN
Revision 27	11/17/2021 CN
Revision 28	11/17/2021 CN
Revision 29	11/17/2021 CN
Revision 30	11/17/2021 CN
Revision 31	11/17/2021 CN
Revision 32	11/17/2021 CN
Revision 33	11/17/2021 CN
Revision 34	11/17/2021 CN
Revision 35	11/17/2021 CN
Revision 36	11/17/2021 CN
Revision 37	11/17/2021 CN
Revision 38	11/17/2021 CN
Revision 39	11/17/2021 CN
Revision 40	11/17/2021 CN
Revision 41	11/17/2021 CN
Revision 42	11/17/2021 CN
Revision 43	11/17/2021 CN
Revision 44	11/17/2021 CN
Revision 45	11/17/2021 CN
Revision 46	11/17/2021 CN
Revision 47	11/17/2021 CN
Revision 48	11/17/2021 CN
Revision 49	11/17/2021 CN
Revision 50	11/17/2021 CN

- Icon / 700 MHz - LTE / 7 Sectors
- Icon / 800 MHz - PCS - LTE / 1 Sector
- Icon / 1900 MHz - PCS - LTE / 1 Sector
- Icon / 2100 MHz - AWS - LTE / 1 Sector

- Cellular Legend
- Icon - 700 MHz - LTE
- Icon - 800 MHz - PCS - LTE
- Icon - 1900 MHz - PCS - LTE
- Icon - 2100 MHz - AWS - LTE



TIER P4 (ROOF) FLOOR PLAN
SCALE = 1/8" = 1'-0"

3/8" x 3/8" ELECTRIC, STEEL LANDING SQUALL

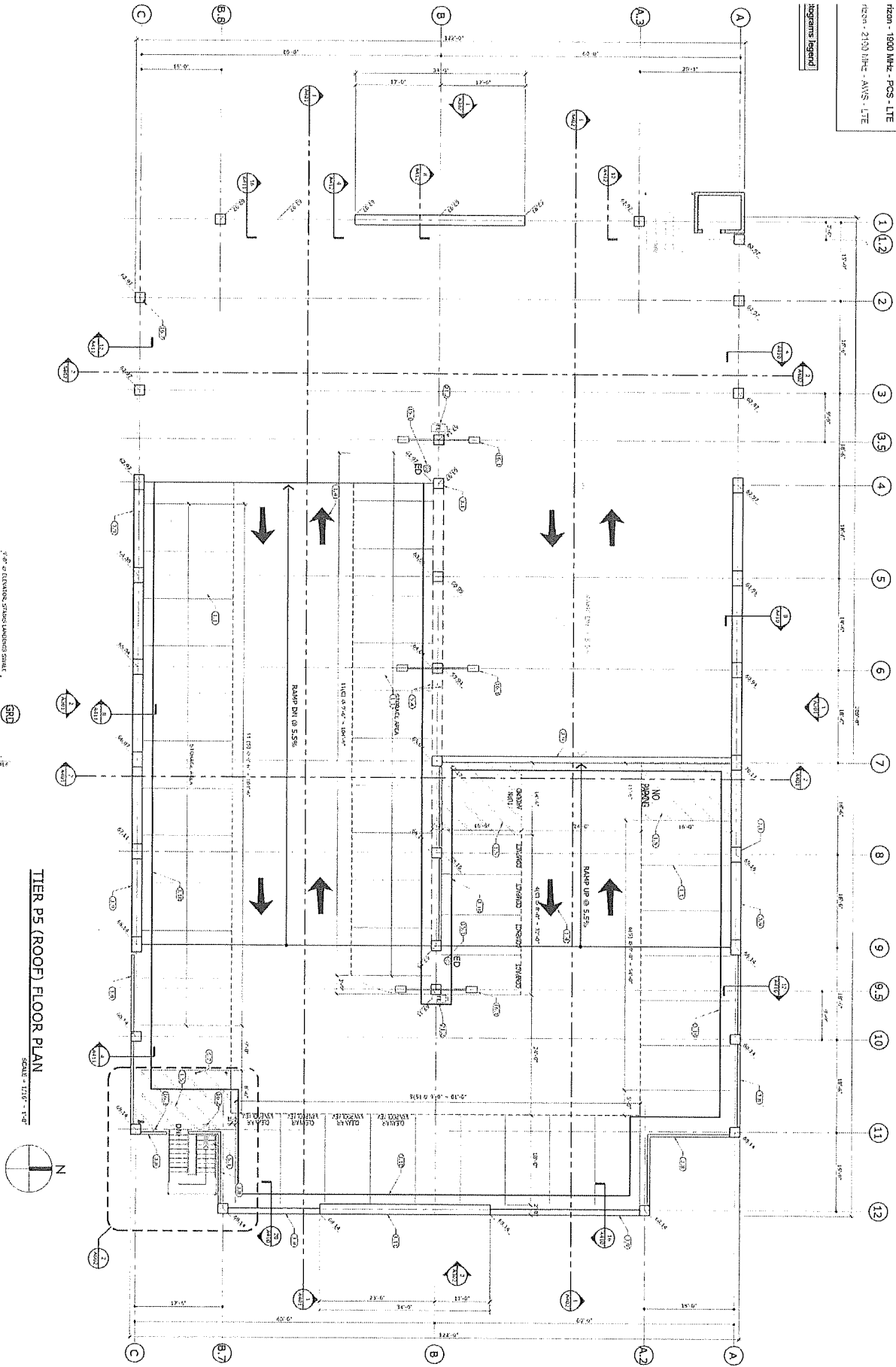
No equipment on this floor

Indoor Prediction Legend

Revision	Author	Date	Description
1	JW	11/15/2021	Initial Design
2	JW	11/15/2021	Updated to RFP and added conduit detail
3	JW	11/17/2021	Removed 17' level equipment
4	JW	11/15/2021	Final Design
<p>Project Name: Long Beach PO Garage</p> <p>Client: CN</p> <p>Site: P4 Level</p>			
<p>2/15/2021</p>			

- nsom / 700 MHz - LTE / 1 Sectors
- nsom / 800 MHz - LTE / 1 Sectors
- nsom / 900 MHz - PCS - LTE / 1 Sectors
- nsom / 2100 MHz - AWS - LTE / 1 Sectors

- cellular legend**
- nsom - 700 MHz - LTE
 - nsom - 800 MHz - LTE
 - nsom - 900 MHz - PCS - LTE
 - nsom - 2100 MHz - AWS - LTE



No equipment on this floor

TIER P5 (ROOF) FLOOR PLAN
SCALE = 1/16" = 1'-0"

3'-0" x 3'-0" SQUARE STUD WALLING SYSTEM

Revision history	NO
Drawn by	1/25/2021
Checked by	1/25/2021
Approved by	1/25/2021
Project name	Long Beach PD Garage
Design name	CN
Plan name	P5 Level