



# CITY OF LONG BEACH

## DEPARTMENT OF PUBLIC WORKS

# C-24

333 West Ocean Boulevard • Long Beach, CA 90802 • (562) 570-6383 • FAX (562) 570-6012

April 15, 2008

HONORABLE MAYOR AND CITY COUNCIL  
City of Long Beach  
California

### RECOMMENDATION:

Request the City Attorney or its designee to accept an easement deed for existing street right-of-way and improvements adjacent to 130 East First Street. (District 2)

### DISCUSSION

In 1987, the Redevelopment Agency (Agency) was involved in the assembly of land for the construction of the Transit Mall and Metro Blue Line rail system on First Street between Long Beach Boulevard and Pacific Avenue. As a part of that effort, the Agency purchased land at the southeast corner of Pine Avenue and First Street. When First Street was widened to accommodate the Transit Mall, the street and sidewalk were constructed over this property that the Agency owned.

Currently, Long Beach Transit is preparing to construct their Visitor Information Center (VIC) at this location on land conveyed to them by the Agency. Portions of street and sidewalk that will not be incorporated into the VIC should be dedicated as public right-of-way. The area to be dedicated is shown with respect to the curb line and the VIC boundary on Exhibit A. Exhibit B shows the boundary detail of the parcel being dedicated.

This matter was reviewed by Deputy City Attorney Lori A. Conway on December 10, 2007 and Budget Management Officer Victoria Bell on April 1, 2008. In conformance with the California Environmental Quality Act, Categorical Exemption Number CEP-560-04 was issued for this project.

### TIMING CONSIDERATIONS

This action is not time sensitive.

**ADMINISTRATION,  
PLANNING & FACILITIES**  
333 W. Ocean Blvd., 9<sup>th</sup> Floor  
Long Beach, CA 90802  
Ph. (562) 570-6383  
Fax (562) 570-6012

**AIRPORT**  
4100 Donald Douglas Dr.  
Long Beach, CA 90808  
Ph. (562) 570-2600  
Fax (562) 570-2601

**ENGINEERING & STREET  
MAINTENANCE**  
333 W. Ocean Blvd., 9<sup>th</sup> Floor  
Long Beach, CA. 90802  
Ph. (562) 570-6634  
Fax (562) 570-6012

**ENVIRONMENTAL  
SERVICES**  
2929 E. Willow Street  
Long Beach, CA 90806  
Ph. (562) 570-2850  
Fax (562) 570-2861

**FLEET SERVICES**  
2600 Temple Avenue  
Long Beach, CA 90806  
Ph. (562) 570-5400  
Fax (562) 570-5414

**TRAFFIC &  
TRANSPORTATION**  
333 W. Ocean Blvd., 10<sup>th</sup> Floor  
Long Beach, CA 90802  
Ph. (562) 570-6331  
Fax (562) 570-7161

HONORABLE MAYOR AND CITY COUNCIL

April 15, 2008

Page 2

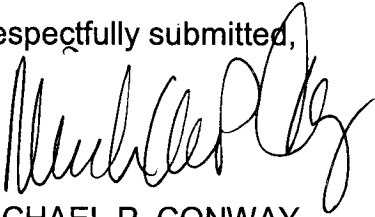
FISCAL IMPACT

A document processing fee of \$490 was paid by the Long Beach Redevelopment Agency and deposited in the General Fund (GP 100) in the Department of Public Works (PW).

SUGGESTED ACTION:

Approve recommendation.

Respectfully submitted,



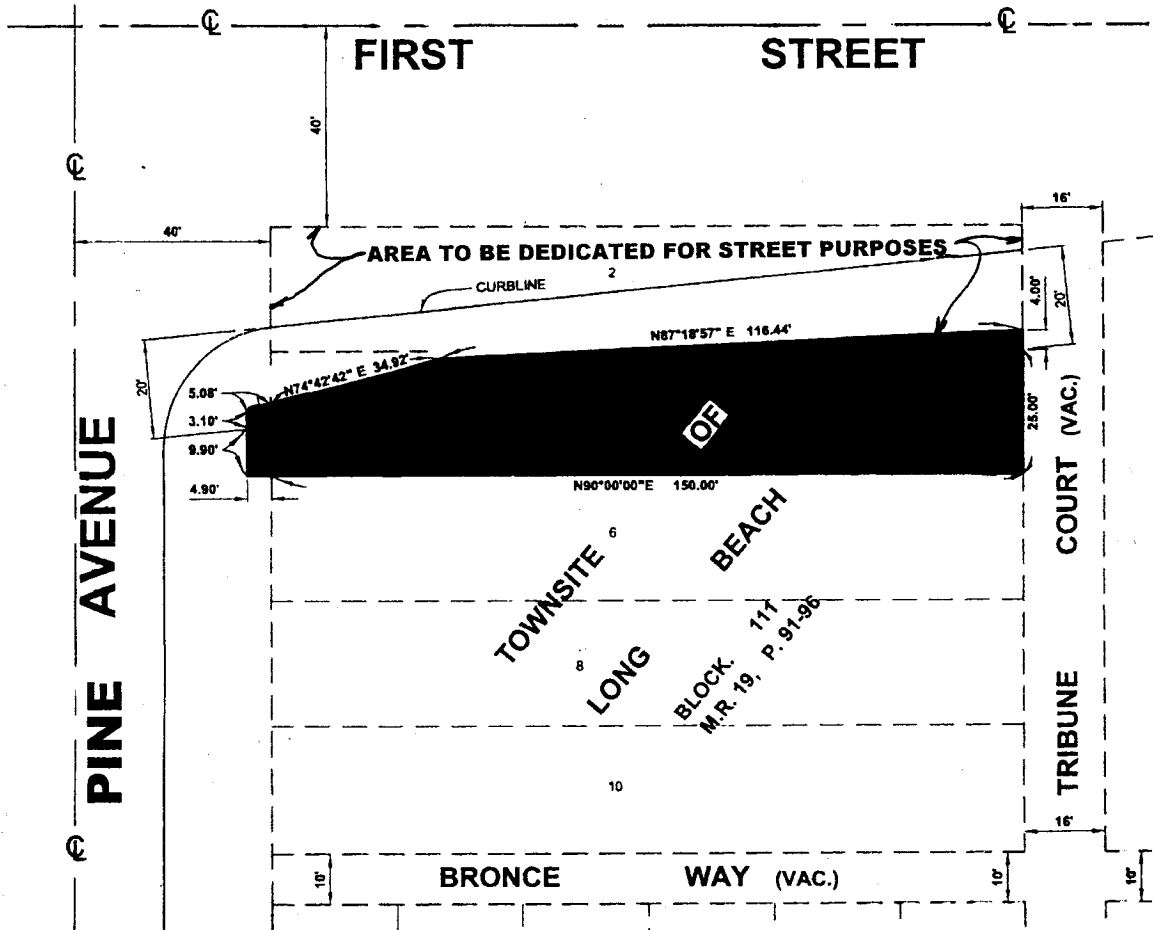
MICHAEL P. CONWAY  
DIRECTOR OF PUBLIC WORKS

P:\CL\Easement 130 E 1st St  
GMM:SC:db

Attachments

APPROVED:

  
PATRICK H. WEST  
CITY MANAGER



**LONG BEACH TRANSIT  
VISITOR'S INFORMATION CENTER  
PARCEL**

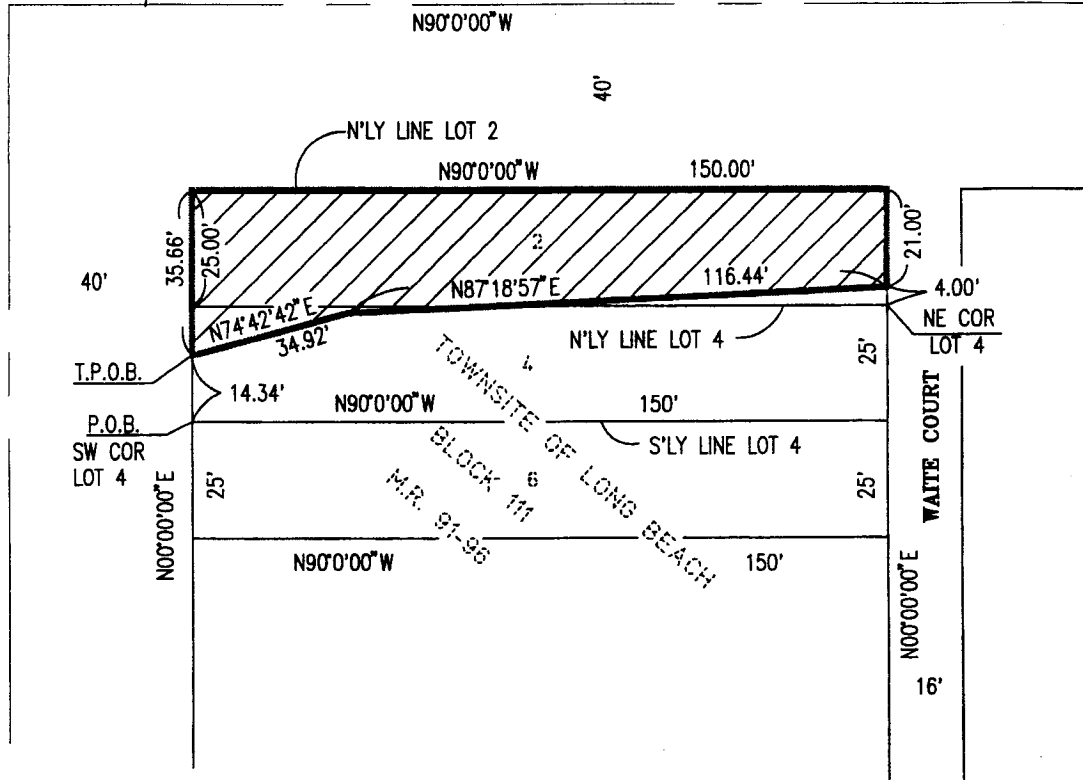


**EXHIBIT SHOWING THE LAND TO BE DEDICATED  
WITH RESPECT TO CURBLINE AND THE  
LONG BEACH TRANSIT VISITOR'S INFORMATION CENTER**

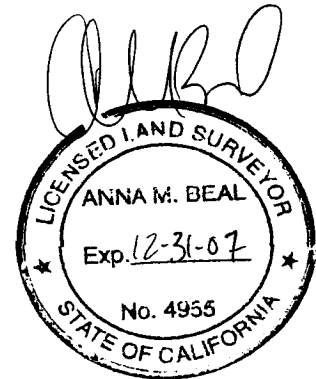
**EXHIBIT A**

CL FIRST STREET

CL PINE AVENUE



 SHOWS PORTION TO BE DEDICATED



SCALE: 1"=40'



2001 EAST FIRST STREET  
SANTA ANA, CA. 92705  
(714) 568-7300

**EXHIBIT B**

BEARING AND DISTANCES SHOWN HEREON  
ARE BASED UPON RECORD DATA.

**CITY OF LONG BEACH**

**130 E. FIRST STREET DEDICATION**