

Pacific Coast Highway

Capital Preventive Maintenance Project

Route 1 PM 0.0/18.0

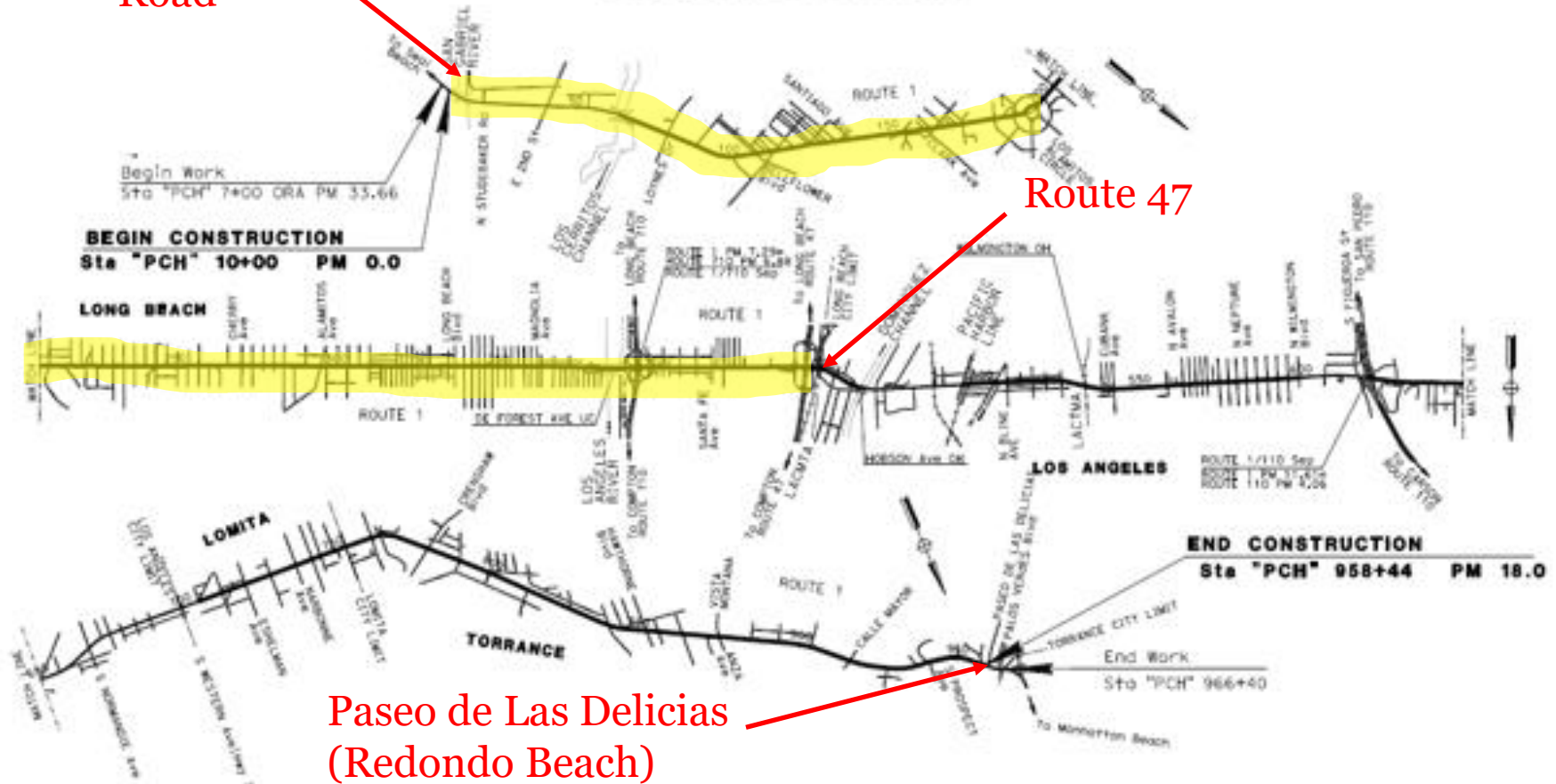
September 19, 2023

STATE OF CALIFORNIA
DEPARTMENT OF TRANSPORTATION

PROJECT PLANS FOR CONSTRUCTION ON
STATE HIGHWAY
IN LOS ANGELES COUNTY

FROM STUDEBAKER ROAD TO PASEO DE LAS DELICIAS

TO BE SUPPLEMENTED BY STANDARD PLANS DATED 2022



Studebaker
Road

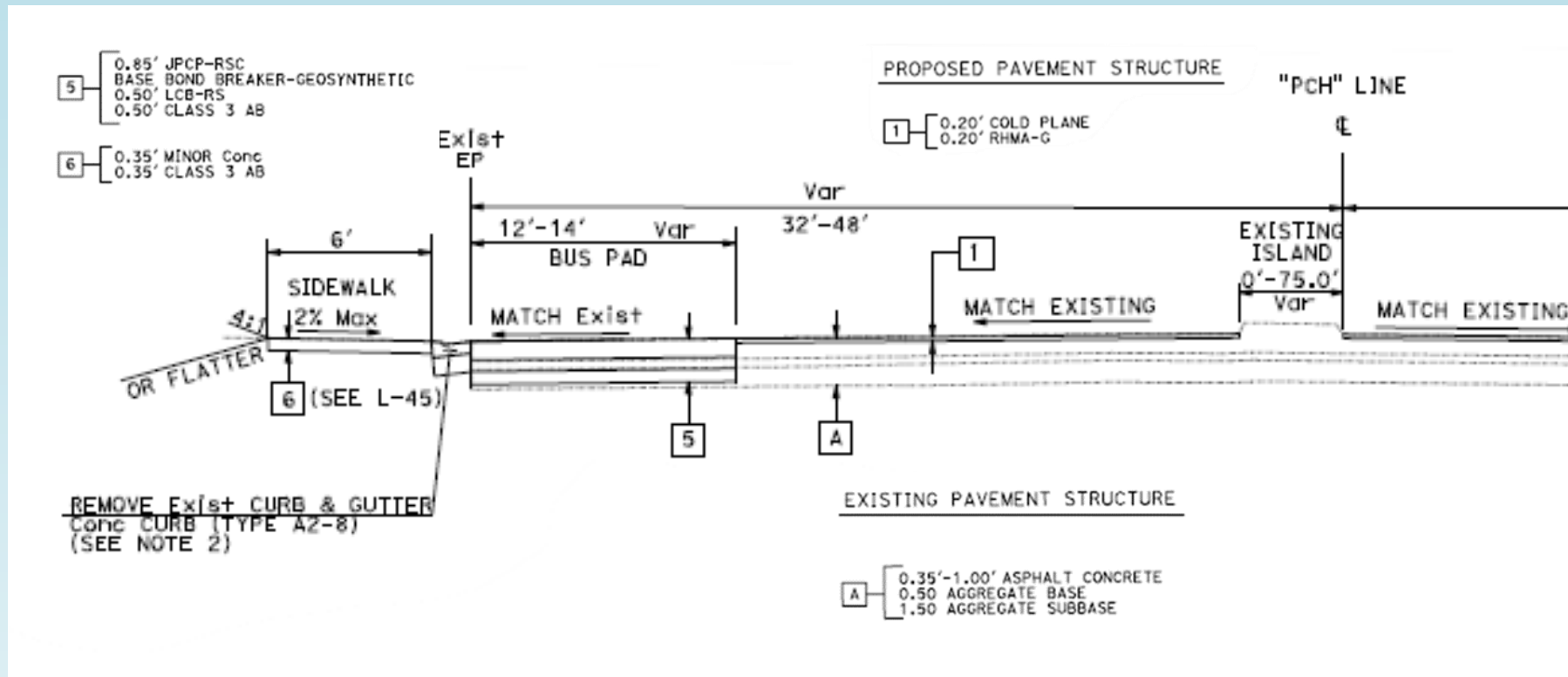
Route 47

Paseo de Las Delicias
(Redondo Beach)

Project Overview and Limits

- **EA 32160 PCH PM 0.0 to 18.0**
(Studebaker Road to just south of Palos Verdes Blvd.) \$36 million Engineers Estimate
- **Schedule:** Currently in Advertisement, Bid Date: September 28, 2023, Construction Phase Begins Winter 2023, Ends Spring 2026
- **Project Scope:**
- Cold Plane and Overlay Asphalt Concrete Pavement (99.4 Lane miles)
- Upgrade ADA Curb Ramps to meet current standards (159 ramps) 52 curb ramps within City of Long Beach.
- Complete Street Elements

Cold plane and overlay asphalt concrete



Sample of proposed cold plane overlay cross section

Cold plane and Overlay in Field



Grinding of road surface

Photo credit: <https://constructionmentor.net/asphalt-pavement-planing/>

Overlaying new road surface

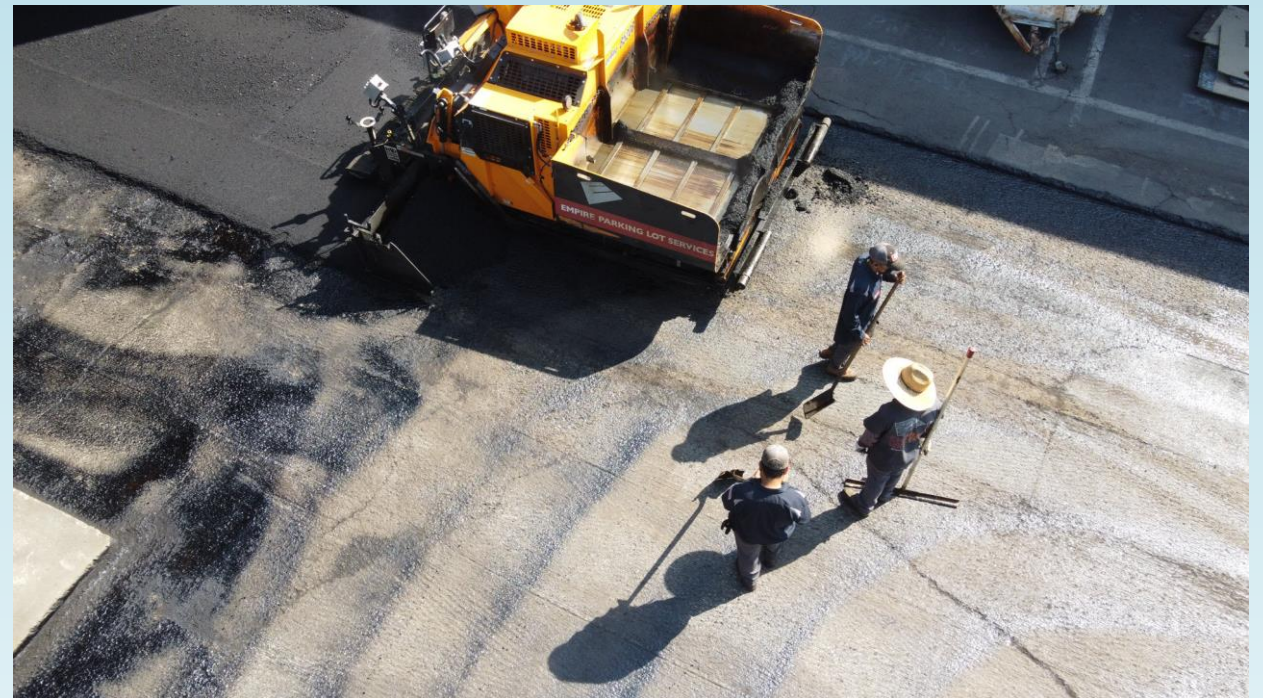
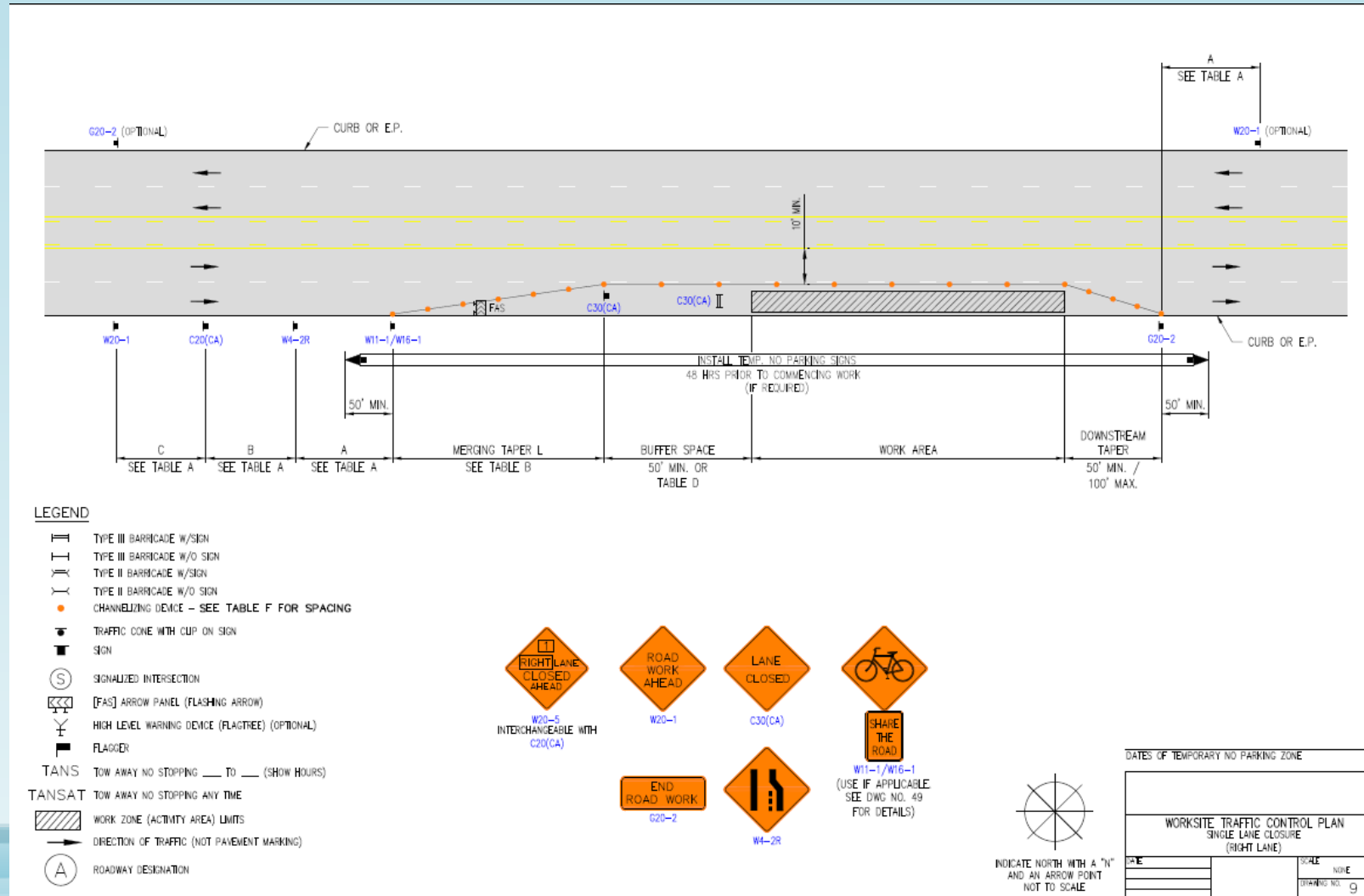


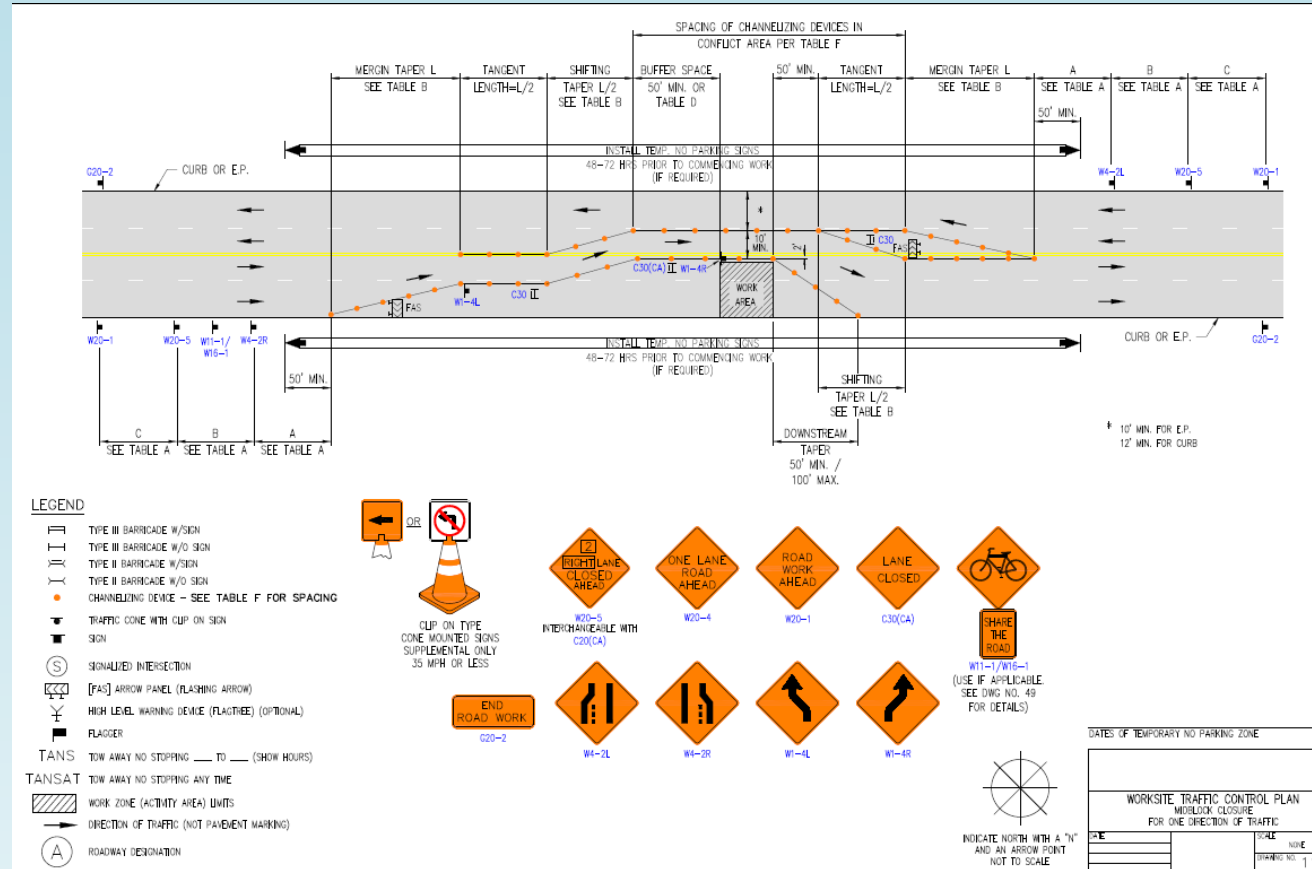
Photo credit: <https://www.empirepls.com/blog/asphalt-overlay>

<https://www.youtube.com/watch?v=vyDsDbglbkw>

Lane closure during cold plane and overlay

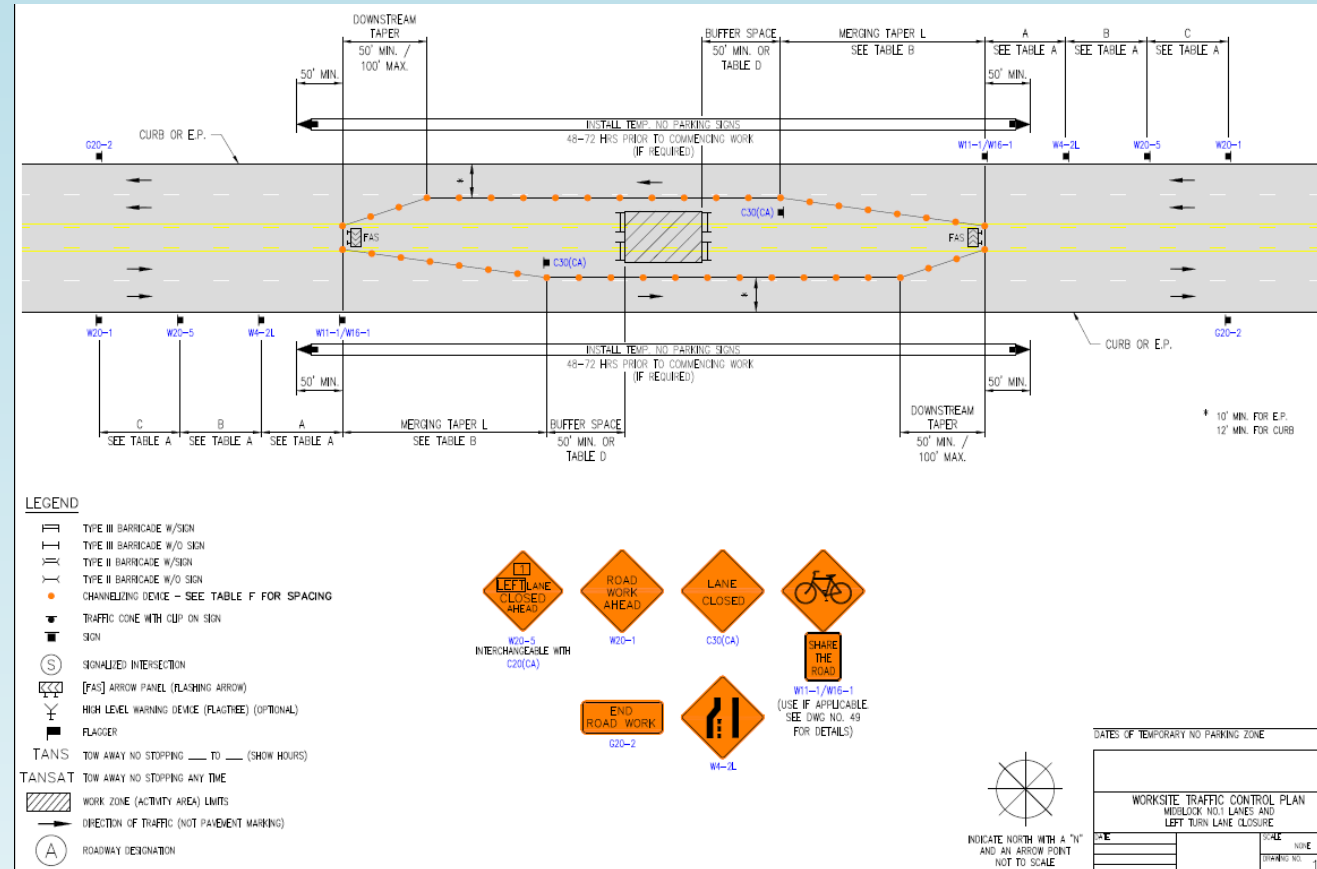


Lane closure during drainage cross over



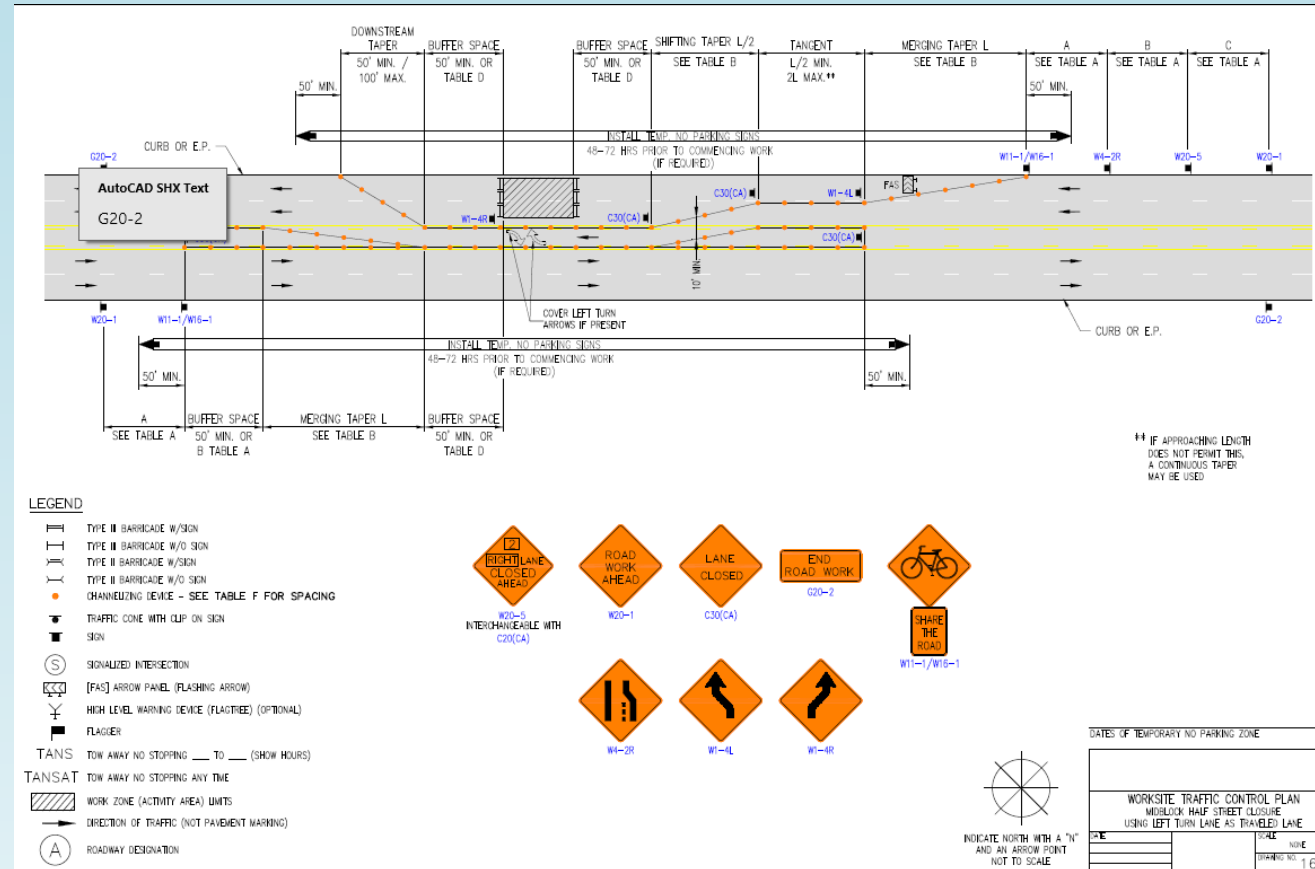
Stage 1

Lane closure during drainage cross over



Stage 2

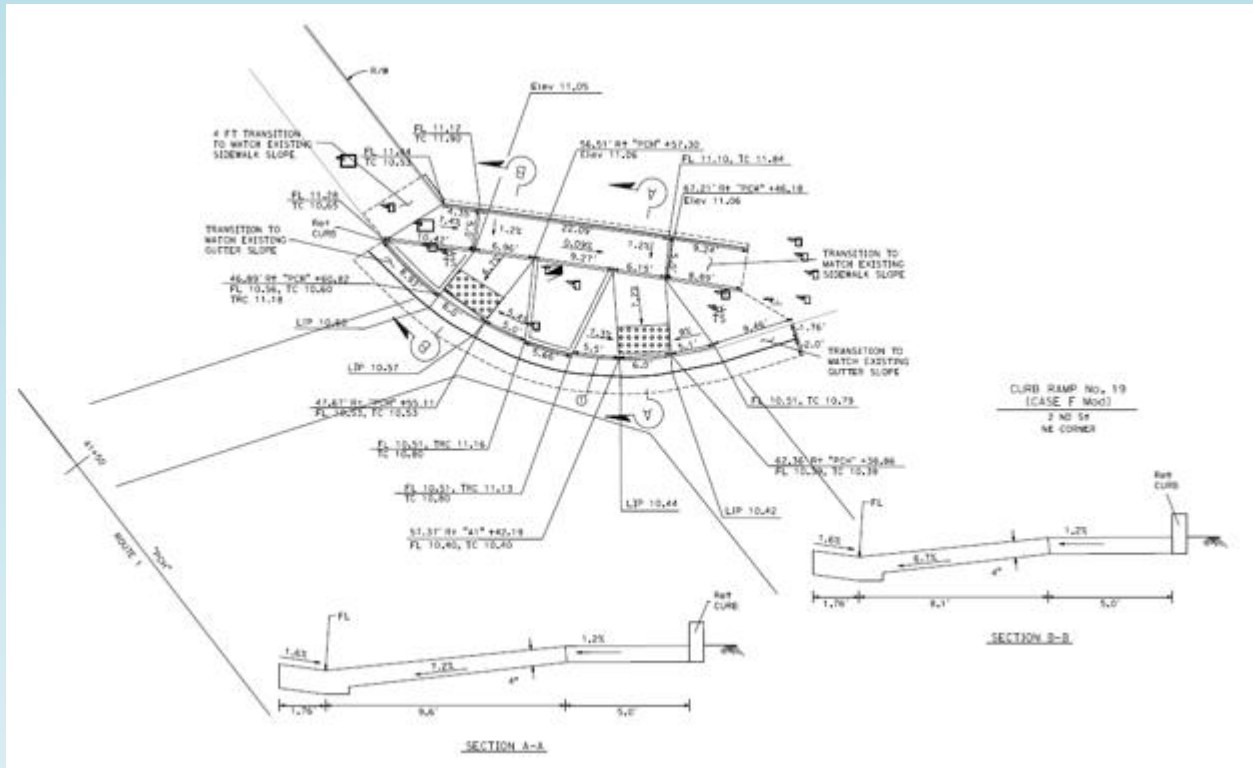
Lane closure during drainage cross over



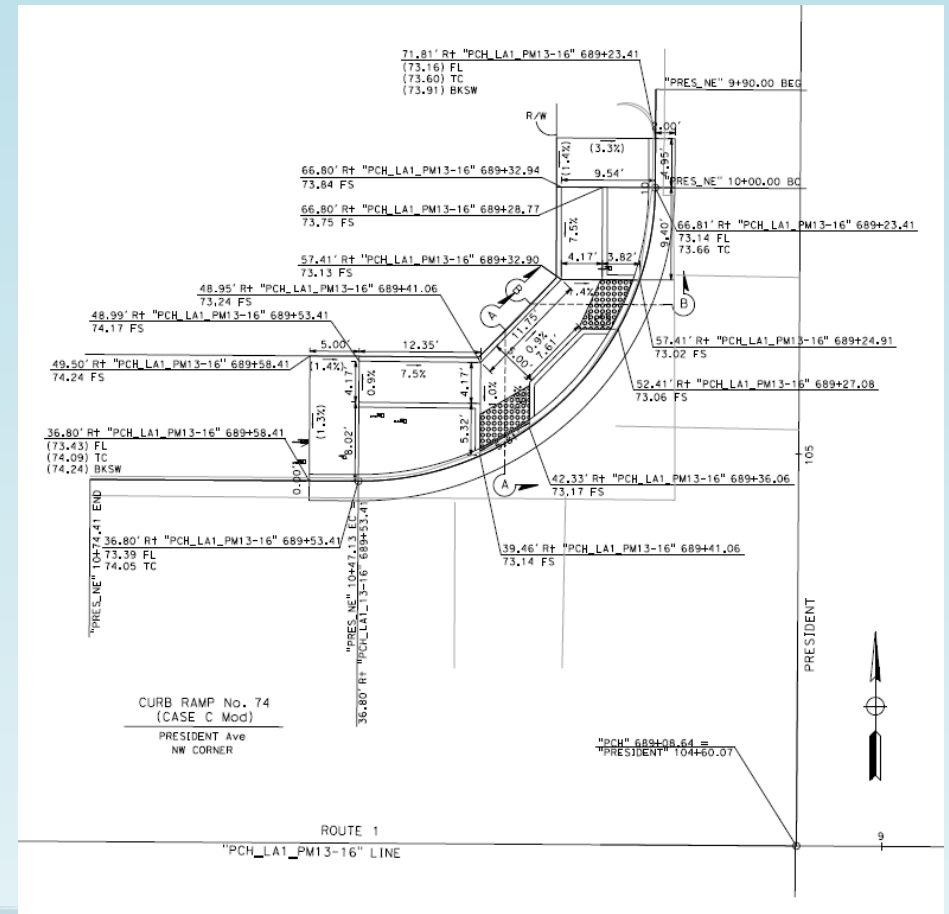
Stage 3

Upgrade ADA curb ramps

Dual directional curb ramps (Case F)



Dual directional curb ramps (Case A/F)



Example of upgraded ADA curb ramps



Dual directional curb ramps (Case A/C)

Single curb ramp in one direction for cross street (Case A)



Traffic control during ramp construction

NOTES:

1. Only signs related to pedestrians are shown. For all other signs see appropriate T-sheets.
2. Barricades closing sidewalk shall cover the full width of the sidewalk. Use R9-11 sign when there are destination points between the detour and the work area. Locate the R9-11 sign to allow pedestrian access.
3. Advance warning sign is not required if the work area is within the limits of a larger work zone. Sign shall be equipped with at least two flags for daytime closure. Each flag shall be orange or fluorescent red-orange in color.

NOTES:

See Standard Plan T9 for tables.

Use cone spacing X for taper segment, Y for tangent segment or Z for conflict situations, as appropriate, per Table 1 unless X, Y, or Z cone spacing is shown on this sheet.

LEGEND:

- † BARRICADE
- TRAFFIC CONE
- ✱ PORTABLE FLASHING BEACON
- ⊥ TEMPORARY TRAFFIC CONTROL SIGN
- ⊥ TEMPORARY TRAFFIC CONTROL SIGN ON BARRICADE

SIGN PANEL SIZE (Min)

SIGN DESIGNATION	SIGN OR PLAQUE	SIGN SIZE
R9-9	SIDEWALK CLOSED	24" x 12"
R9-10	SIDEWALK CLOSED USE OTHER SIDE	24" x 12"
R9-11	SIDEWALK CLOSED AHEAD CROSS HERE	24" x 18"
R9-11a	SIDEWALK CLOSED CROSS HERE	24" x 12"
W11-2	PEDESTRIAN	36" x 36"
W16-7P	DIAGONAL DOWNWARD POINTING ARROW (PLAQUE)	24" x 12"
W16-9P	AHEAD (PLAQUE)	24" x 12"
W20-1	ROAD WORK AHEAD	36" x 36"

**STATE OF CALIFORNIA
DEPARTMENT OF TRANSPORTATION**

**TEMPORARY PEDESTRIAN ACCESS ROUTES
TYPICAL SIDEWALK/CROSSWALK CLOSURE
AND PEDESTRIAN DETOUR**

NO SCALE

T32

Chas. P. Sigo
REGISTERED CIVIL ENGINEER
May 1, 2023
PLANS APPROVAL DATE
No. 44309
Exp. 3-31-24
THE STATE OF CALIFORNIA OR ITS OFFICERS OR AGENTS SHALL NOT BE RESPONSIBLE FOR THE ACCURACY OR COMPLETENESS OF DRAWN COPIES OF THIS PLAN SHEET.

Complete Street Elements

- Enhanced Visibility Paint at Crosswalks
- Bicycle & Pedestrian Signage
- Shared-Lane Markings – for bicyclist
- Conflict zone green paint – in bike lanes
- Class II buffered bike lane

Complete street elements



Enhanced continental crosswalk

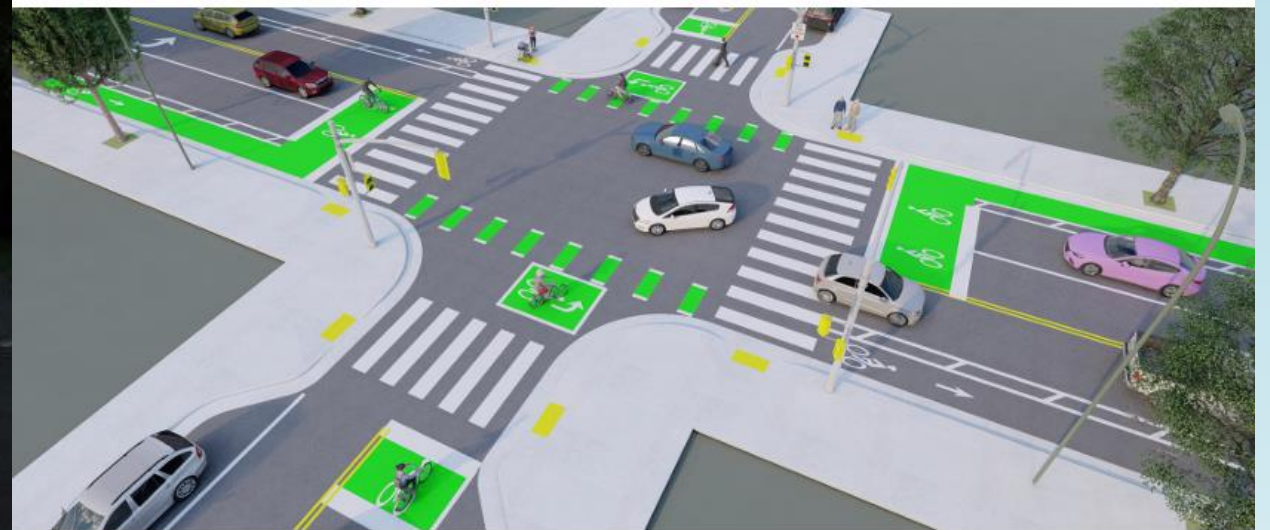


Bicycle signage

Complete street elements



Class II buffer bike lane



Conflict zone green paint

Schedule in Long Beach Limits

- **Route 1 PCH I-110 to I-710 Segment Priority**
- **Schedule:** Currently in Advertisement
Construction Phase Begins Fall 2023 & Ends Spring 2025
- **Project Type:**
- Cold Plane and Overlay Asphalt Concrete Pavement (roughly about 40 lane miles)
- Upgrade ADA Curb Ramps to meet current standards (52 curb ramps in Long Beach)
- Complete Street Elements

Upcoming

Future Projects Along Rte 1 -PCH

- **EA 36480 Rte. 1- PM 4.5/7.1**
ADA Compliant Curb, Sidewalk and Driveways:
Construction Phase Begins October 2026
- **EA 35200 Rte. 1- PM 4.8/6.6**
Upgrade Traffic Signals and ADA Ramps at following intersections: Junipero Ave, Gaviota Ave., MLK Ave and Cedar Ave.
Construction Phase Begins October 2022
- Other ADA Curb Ramp Projects in planning phase

Pacific Coast Highway

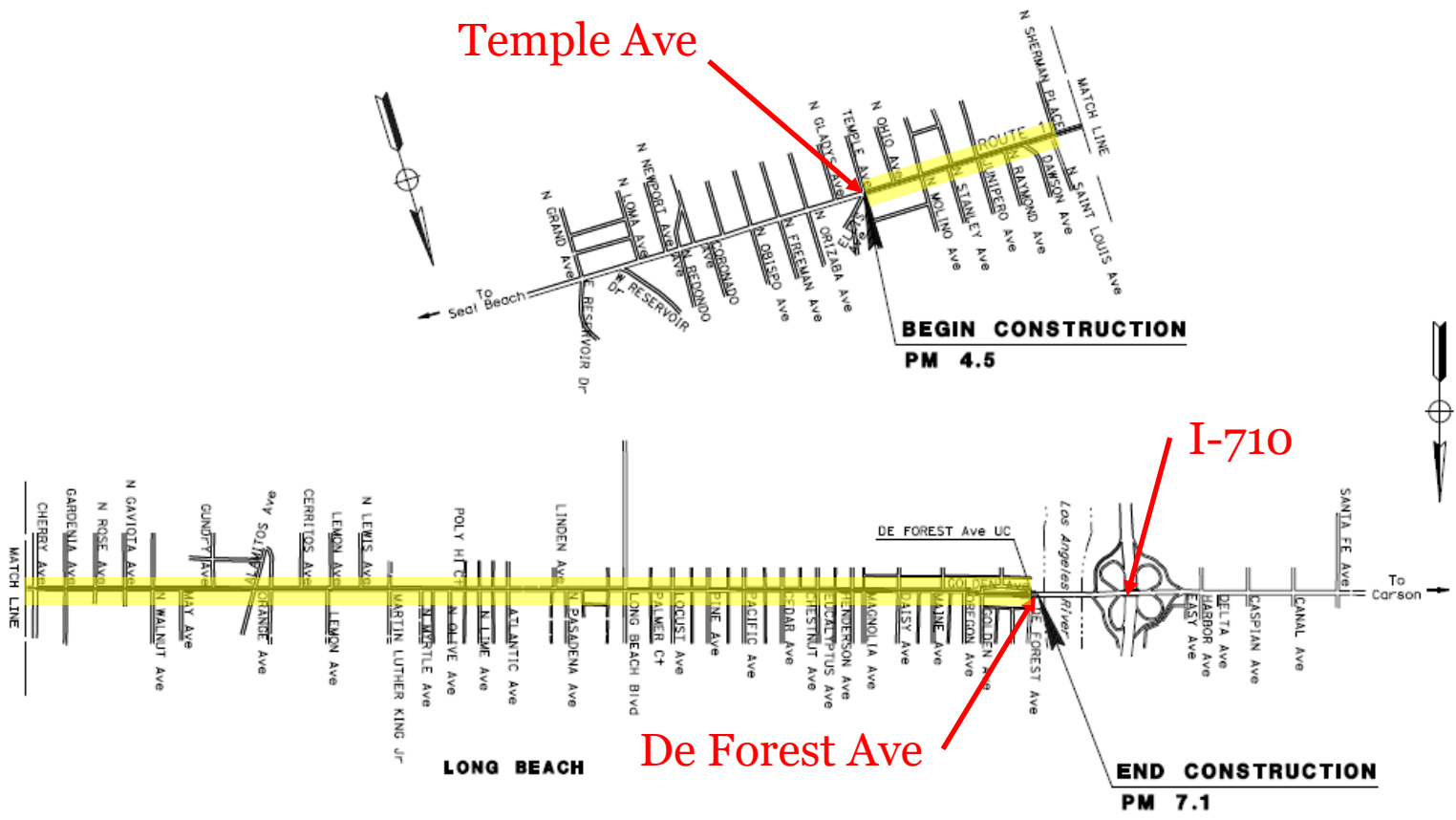
ADA Improvement Project

Route 1 PM 4.5/7.1

September 19, 2023

STATE OF CALIFORNIA
DEPARTMENT OF TRANSPORTATION
PROJECT PLANS FOR CONSTRUCTION ON
STATE HIGHWAY
IN LOS ANGELES COUNTY
IN LONG BEACH
ON ROUTE 1
FROM TEMPLE AVENUE TO
DE FOREST AVENUE UNDERCROSSING

TO BE SUPPLEMENTED BY STANDARD PLANS DATED 2020



Project Overview and Limits

- EA 36480 PCH PM 4.5 to 7.1
(Temple Ave to De Forest Ave UC)
- Fill the gap of pedestrian connectivity.
 - Reconstruct leftover curb ramps, driveways, and sidewalk to provide ADA accessible network and enhance pedestrian safety.
- Challenges Faced:
 - Utility conflicts
 - Right of Way

Project Overview and Limits

- **Schedule:** Currently in PAED
 - PAED: Dec 29th, 2023
 - PS&E: Feb 27th, 2026
 - Ready To List: Mar 30th, 2026
 - Bids Open: Sep 30th, 2026
 - Begin Construction: Dec 15th, 2026
 - End Construction: July, 2028

Project Overview and Limits

Project Scope:

- Upgrade ADA curb ramps (103), driveways (126), and sidewalk.
- Widening sidewalks at various locations toward the roadway by 1’.
- Install/upgrade APS (36).
- Upgrade crosswalk striping.
- Upgrade traffic signal systems (4). Relocate traffic signal poles (4).
- Relocate street light poles (51).
- Reconstruct drainage inlets (19).

Example of Upgraded ADA Curb Ramps



Dual direction curb ramps (Case A/C)



Single directional curb ramp (Case A)

Example of Upgraded Driveways



Depressed driveway



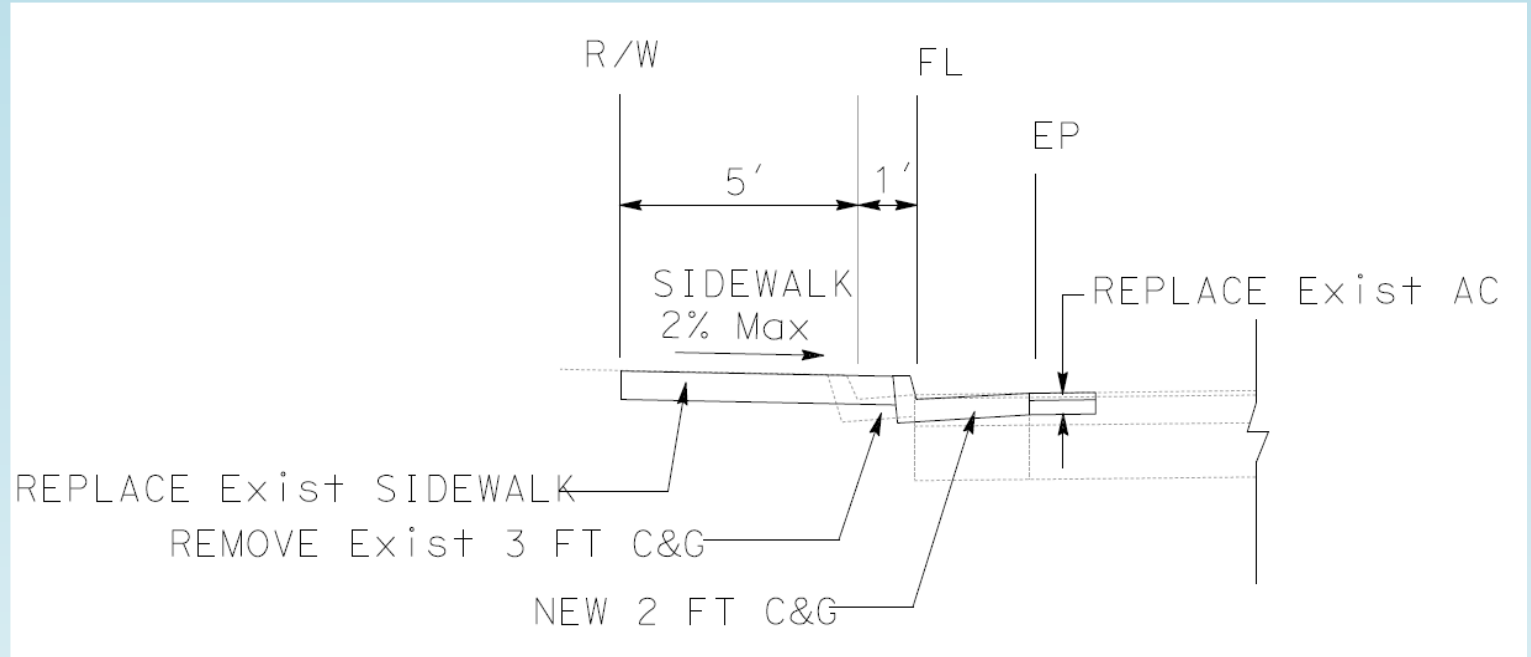
Driveway with sidewalk at the back

ADA Sidewalk

- Widen sidewalk width to address substandard clear path width



Only 30” for existing condition



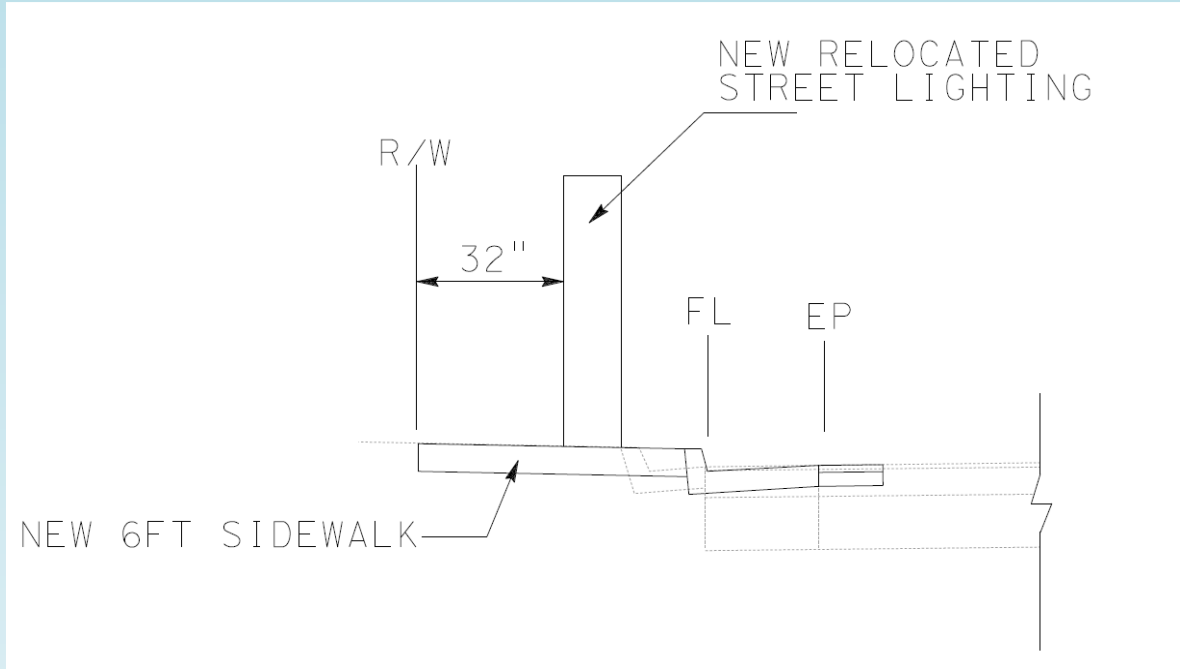
- Widening sidewalks toward the roadway for 1’ to provide minimum ADA clear path width.
- Edge of pavement remain in place.

ADA Sidewalk

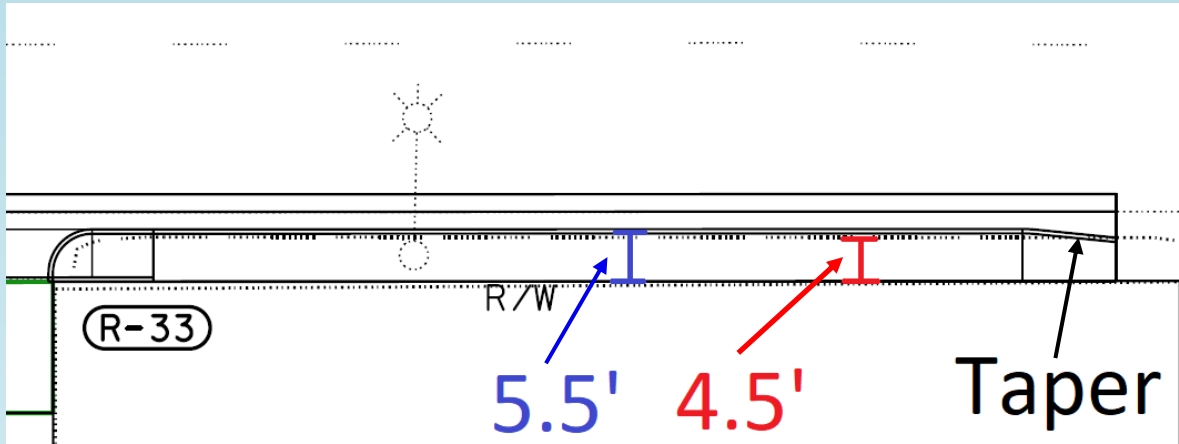
- New 6 ft sidewalk with standard clear path width



Only 30" for existing condition



ADA Sidewalk



- Widening sidewalk by 1'
- Taper or construct new curb return



- Provide sidewalk behind
- Require highway easement

Example of Upgraded Crosswalk



Enhanced Continental Crosswalk

- Proposed to upgrade 54 crosswalks within this project limit.

Questions & Answers

- **Please raise your hand to speak. You will be unmuted. Thank you!**

