



CITY OF LONG BEACH

OFFICE OF THE CITY MANAGER

333 West Ocean Boulevard • Long Beach, CA 90802 • (562) 570-6711 FAX (562) 570-7650

January 20, 2015

HONORABLE MAYOR AND CITY COUNCIL
City of Long Beach
California

RECOMMENDATION:

Authorize the City Manager to execute a Revocable Permit granting the Grand Prix Association of Long Beach permission to occupy and use certain areas for parking and hospitality during the staging of the 2015 Toyota Grand Prix of Long Beach. (District 2)

DISCUSSION

On April 17 through 19, 2015, the 41st Annual Toyota Grand Prix of Long Beach will take place on the streets of Long Beach. The Grand Prix Association of Long Beach (Association) has requested the use of certain areas adjacent to the race circuit for general and recreational vehicle parking (Exhibit A) and hospitality areas (Exhibit B) for approximately 175,000 race fans who will come to watch this year's event. The proposed Revocable Permit grants permission to occupy these areas and it establishes the conditions and fees for their use. This request is consistent with previous requests from the Association, which has conducted the race in Long Beach for 40 years.

This year's Revocable Permit will allow the Association to use the Alamitos Beach parking lot, the northern section of the Shoreline Marina parking lot, and the western end of Shoreline Drive, including center median areas for general motor vehicle parking and storage. Hospitality areas will be established at the Rainbow Lagoon and Marina Green areas. These are the same areas granted under the permit last year.

Health and Human Services and Fire Department personnel will be present during all days of the Long Beach Grand Prix and will perform continual inspections of the permitted areas.

This matter was reviewed by Deputy City Attorney Richard Anthony on December 16, 2014, and Budget Management Officer Victoria Bell on December 17, 2014.

HONORABLE MAYOR AND CITY COUNCIL

January 20, 2015

Page 2 of 2

TIMING CONSIDERATIONS

City Council action is requested on January 20, 2015, in order to expedite the issuance of the Revocable Permit. Construction for the 2015 Toyota Grand Prix of Long Beach begins on February 16, 2015.

FISCAL IMPACT

Parking charges of \$15,074 will be assessed for use of parking areas (Exhibit C) under the Revocable Permit and will be deposited into the Tidelands Operations Fund (TF 401) in the City Manager Department (CM). The City shall be reimbursed for all City expenses associated with this event. There is no local job impact associated with the recommended action.

SUGGESTED ACTION:

Approve recommendation.

Respectfully submitted,



(PATRICK H. WEST
CITY MANAGER

TD:js

Attachments: Exhibits A-C

EXHIBIT A - PARKING PERMIT ACCESS

2015 TOYOTA GRAND PRIX OF LONG BEACH CIRCUIT MAP

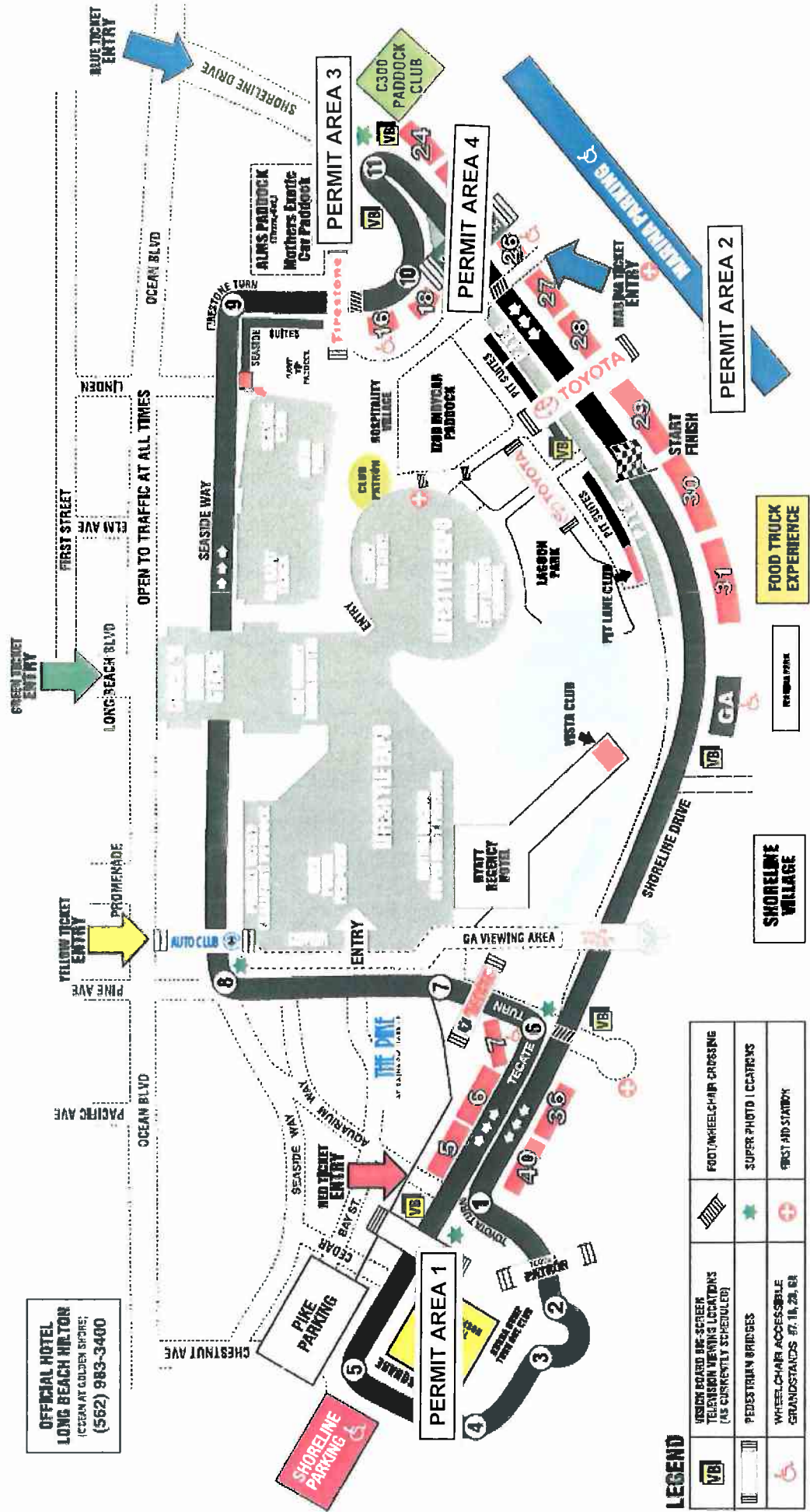


EXHIBIT B - HOSPITALITY AREAS

2015 TOYOTA GRAND PRIX OF LONG BEACH CIRCUIT MAP

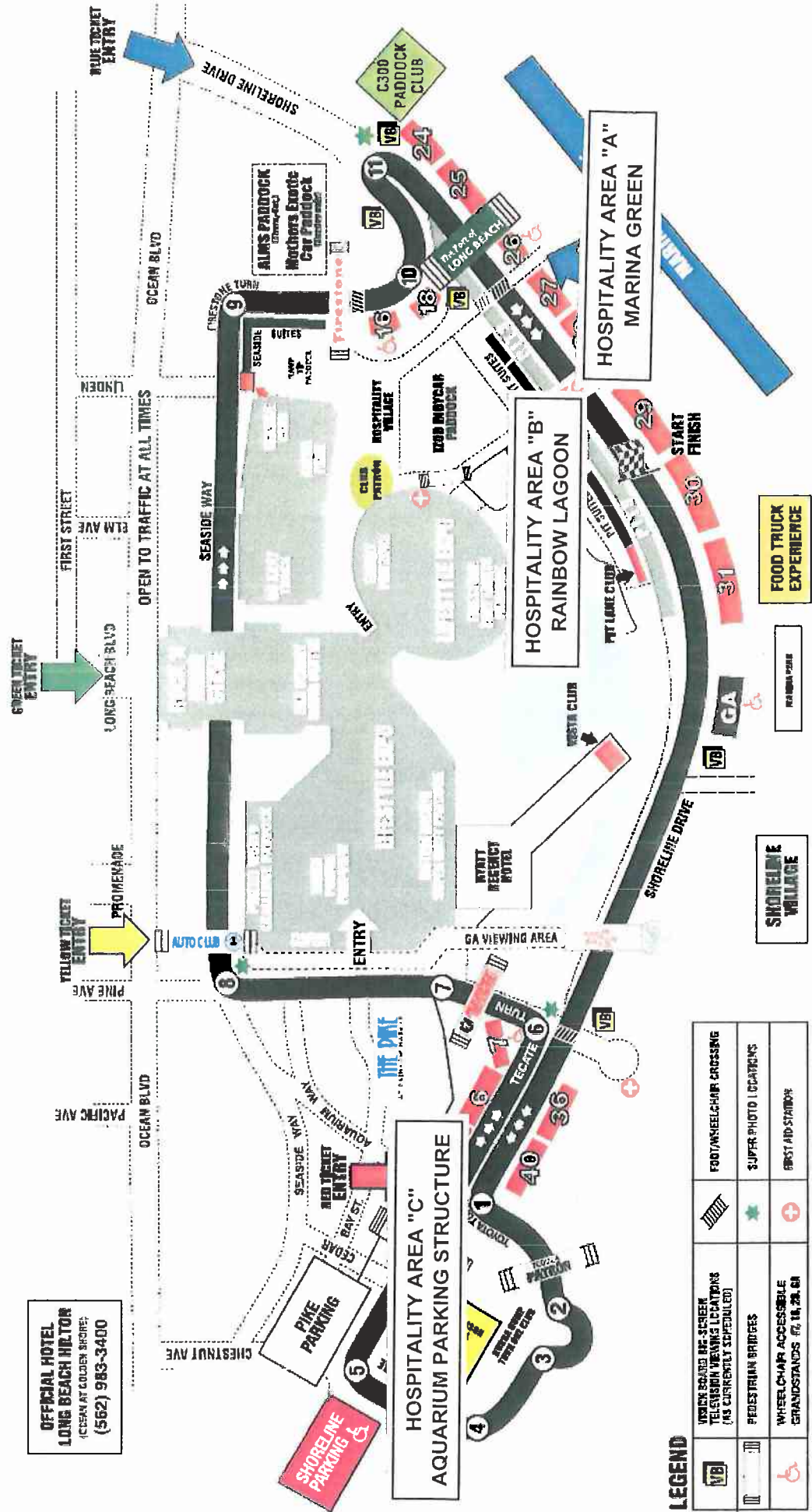


EXHIBIT C

2015 Grand Prix Revocable Permit

PARKING CHARGES

Beach Parking	\$ 4,500.00
Alamitos Lot Parking	\$ 2,628.00
Access Road Parking	\$ 5,994.00
Boat Owner Parking	<u>\$ 1,952.00</u>
TOTAL:	\$15,074.00 *

* Per Grand Prix Association of Long Beach, LLC Amended and Restated Agreement Friday-Sunday Expense Cap (Exhibit B).