

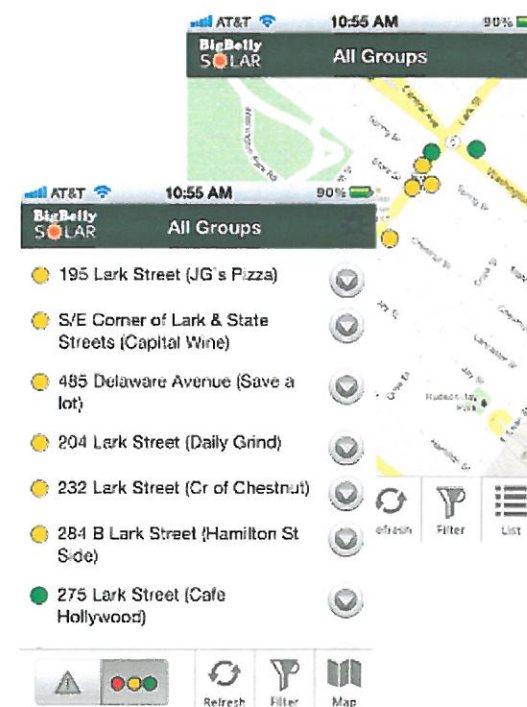
# Long Beach – Belmont Shore



Location Type	Number of Stations
BB3 + Classic Recycler Software Contract	1 double station (purchased June 2010) June 15 2011
BB4 + Classic Recycler Software Contract	9 double stations (purchased Oct 2011) Oct 2013

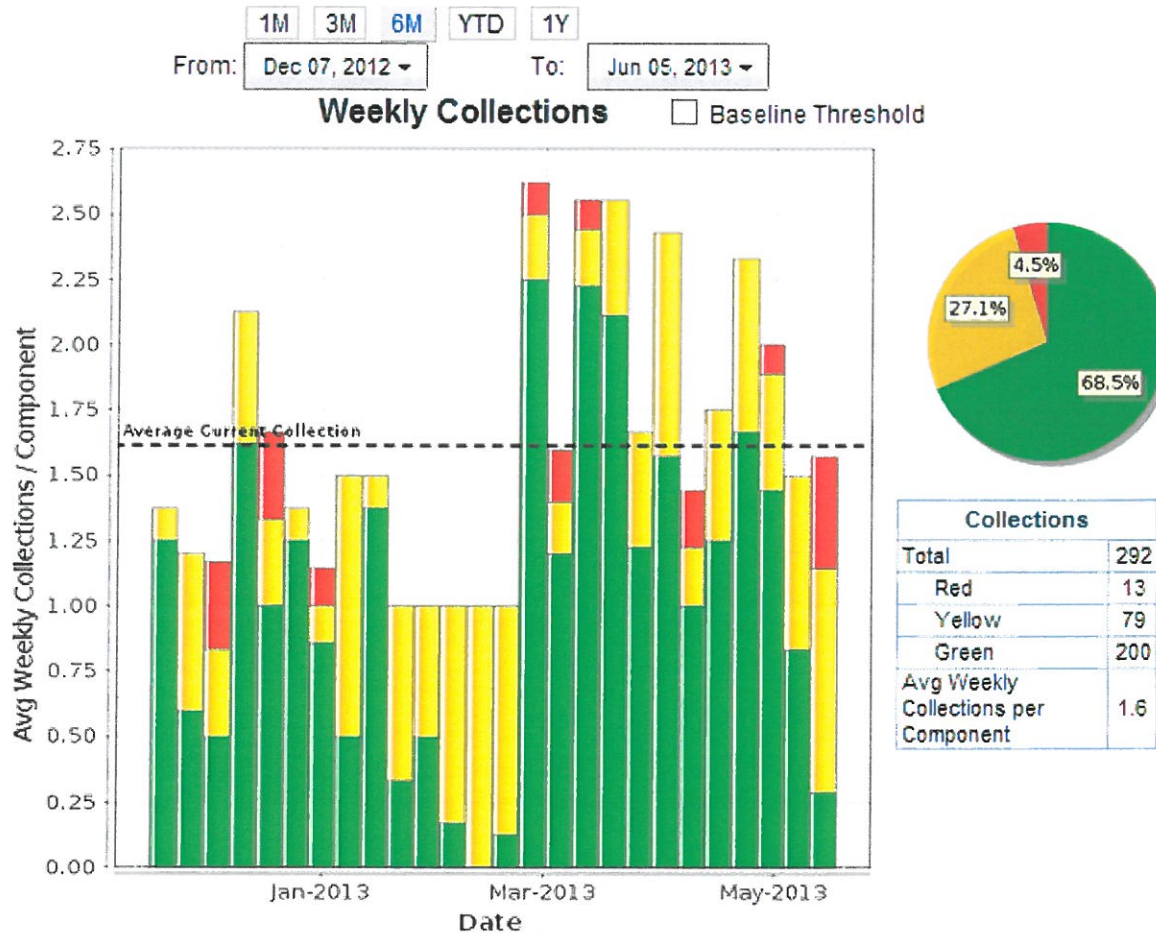
# Currently enabled with CLEAN software license

Real time data  
Historical Analysis  
Heat mapping  
Automatic fullness notifications  
Anywhere access, any time.



...eliminate overflowing bins, and unnecessary collections by knowing exactly when to pick up

# Operational Performance

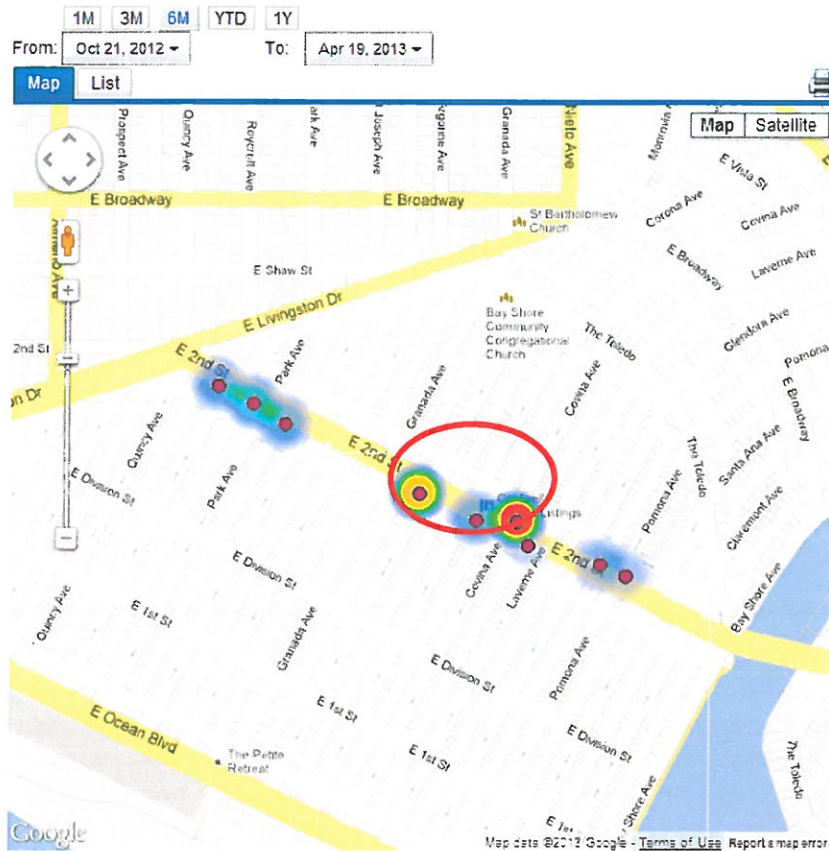


- 2.93 tons of garbage on 9 receptacles in 6 months
- Color indicates fullness at pick up

Software utilization has dropped collections down to 1.6 times per week!

# Operational Performance

## Heat mapping



### Five Highest Frequency Locations (past 6 months)

ID	Description	Gallons
2400065	Starbucks	3000
2400067	Rite Aid	2880
2400064	Starbucks	1530
2400062	Saga and Jills	1410
2400070	YogurtLand	1410

### Lowest Frequency Locations (past 6 months)

2400063		1350
2400066	Paradis Ice Cream	990
2400071	Pomona Ave, Aromadi Room	750
2400061	BJ's	480

*Decision making data...*