

## Airport Advisory Commission

**Phyllis Ortman**  
Chair

**Roland B. Scott, Jr.**  
Vice Chair

**Elizabeth Cruz**

**Hal Gosling**

**Bob Luskin**

**Gerald Mineghino**

**Karen Sherman**

**Carol Soccio**

## Airport Management

**Mario Rodriguez**  
Airport Director

**Ken Mason**  
Executive Assistant

**Carolyn Carlton-Lowe**  
Operations & Facilities  
Bureau Manager

**JC Squires**  
Manager, Finance  
& Administration

**Claudia Lewis**  
Administrative Officer

**Fred Pena**  
Facilities Management Officer  
Airside Operations Superintendent

**Mario Fabila**  
Noise Compliance &  
Environmental Affairs Officer

**John Blood**  
Chief of Security

**Kerry Gerot**  
Public Affairs Officer



# Long Beach Airport Monthly Noise Report December 2011

**COMMERCIAL AIRCRAFT LATE NIGHT ACTIVITY**  
**LGB Current Month & Calendar Year-To-Date Statistics (10 PM- 7AM)**  
**December 2011**

				December			CY-T-D 2011		
10PM - 11PM Activity	2011	2010	Change	2011	2010	Change	2011	2010	Change
(									
<b>Air Carrier &amp; Commuter Operations</b>	<b>0</b>	<b>0</b>		<b>0</b>	<b>0</b>		<b>0</b>	<b>0</b>	
Alaska / Horizon	0	0		2	1		13	0	
Allegiant	0	0		13	8	62.5%	0	0	
Delta / Skywest	1	4	-75.0%	13	8	62.5%	0	0	
FedEx	0	0		0	0		1	3	-66.7
Frontier	0	1		1	3	-66.7	293	356	-17.7%
JetBlue	12	46	-73.9%	293	356	-17.7%	0	4	
UPS	0	1		0	4		22	11	
US Airways	0	0	-75.0%	22	11				
<b>Subtotal 10PM-11PM</b>	<b>13</b>	<b>52</b>	<b>-75.0%</b>	<b>344</b>	<b>383</b>	<b>10.2%</b>			
11PM- 7AM Activity	2011	2010	Change	2011	2010	Change	2011	2010	Change
Alaska / Horizon	0	0		0	0		10	0	
Allegiant	0	0		0	1		0	0	
Delta / Skywest	0	0		0	0		1	2	-50.0%
FedEx	0	0		0	0		114	114	
Frontier	0	0		1	2	-50.0%	0	1	
JetBlue	8	12	66.7%	114	114		6	1	
UPS	0	0		0	1				
US Airways	0	0		6	1				
<b>Subtotal 11PM-7AM</b>	<b>8</b>	<b>12</b>	<b>-33.3%</b>	<b>132</b>	<b>119</b>	<b>10.9%</b>			
<b>TOTAL</b>	<b>21</b>	<b>64</b>	<b>-67.2%</b>	<b>476</b>	<b>502</b>	<b>-5.2%</b>			

# AIRPORT OPERATIONS & AIRCRAFT NOISE VIOLATIONS

## LGB Current Month & Calendar Year-To-Date Statistics

### December 2011

December				CY-T-D 2011		
Air Carrier Noise Violations	2011	2010	Change	2011	2010	Change
Allegiant	0	0		13	1	
FedEx	0	0		0	0	
Frontier	0	0		0	1	-100.0%
JetBlue	10	24	-58.3%	142	150	-5.3%
UPS	1	0		1	6	-83.3%
US Airways	0	0		2	1	100.0%
<b>Subtotal</b>	<b>11</b>	<b>24</b>	<b>-54.2%</b>	<b>151</b>	<b>150</b>	<b>0.7%</b>
Commuter Noise Violations	2011	2010	Change	2011	2010	Change
Alaska / Horizon	0	0		0	0	
Delta / Skywest	0	0		0	1	-100.0%
US Airways	0	0		0	0	
<b>Subtotal</b>	<b>0</b>	<b>0</b>		<b>0</b>	<b>1</b>	
Non-Commercial Noise Violations	2011	2010	Change	2011	2010	Change
All GA, Charter & Other	8	22	-63.6%	149	173	-13.9%
<b>TOTAL</b>	<b>19</b>	<b>46</b>	<b>-63.6%</b>	<b>307</b>	<b>333</b>	<b>-7.8%</b>
Monetary Fines						
LBMC 16.43.090E Airport Surcharges	\$1,800	\$4,200		\$26,200	\$27,700	
LBMC 16.43.100 JBU Consent Decree	\$36,000	\$72,000		\$498,000	\$480,000	
<b>TOTAL</b>	<b>\$37,800</b>	<b>\$76,200</b>		<b>\$524,200</b>	<b>\$507,700</b>	
Airport Operations (FAA)	2011	2010	Change	2011	2010	Change
Air Carrier + Commuter Carriers	0	0		0	0	
Air Taxi + General Aviation	0	0		0	0	
Military Operations	0	0		0	0	
<b>Total Aircraft Operations</b>	<b>0</b>	<b>0</b>		<b>0</b>	<b>0</b>	

**NOTES:**

- 21.7% (49 of the 225) of JetBlue's violations for YTD 2011 can be attributed to activity between 10 PM - 11PM. This activity did not meet the criteria for Unanticipated Delay, and therefore a LBMC 16.43 violation of \$300 was issued for each occurrence.

# December 2011

OWNER NAME	DATE	TIME	A/D	RWY	A/C TYPE	NMTID	SEL	LIMIT	STATUS
Desert Rain Aviation Inc.	12/3/2011	11:49:45 PM	A	30	C525	9	83.9	79.0	VIOLATION
ATI Jet Sales	12/7/2011	11:07:56 PM	D	30	LJ55	9	90.3	79.0	VIOLATION
BW Industries LLC	12/7/2011	11:12:25 PM	A	30	WW24	10	85.3	79.0	VIOLATION
S & P Air LLC	12/9/2011	11:12:46 PM	D	30	BE20	9	83.5	79.0	VIOLATION
JetBlue Airways Corporation	12/14/2011	11:09:00 PM	D	30	A320	9	95.6	79.0	ALT ENF & VIO
UPS	12/15/2011	5:22:07 PM	A	30	B763	10	105	101.5	VIOLATION
JetBlue Airways Corporation	12/16/2011	1:29:04 AM	A	25R	A320	1	92.8	79.0	ALT ENF & VIO
JetBlue Airways Corporation	12/16/2011	10:42:19 PM	D	30	A320	10	94.3	90.0	VIOLATION
Sunwest Aviation Ltd.	12/17/2011	4:44:56 AM	A	30	C560	10	88	79.0	VIOLATION
GE Capital CF Mexico S.A. de C.V	12/21/2011	12:19:21 AM	A	30	GLF4	10	87.4	79.0	VIOLATION
JetBlue Airways Corporation	12/21/2011	11:29:24 PM	D	30	A320	9	94.9	79.0	ALT ENF & VIO
JetBlue Airways Corporation	12/21/2011	11:35:46 PM	D	30	A320	9	96.4	79.0	ALT ENF & VIO
JetBlue Airways Corporation	12/22/2011	12:07:41 AM	A	30	A320	10	92.7	79.0	ALT ENF & VIO
Leavitt Leasing Co. Inc.	12/22/2011	1:30:07 AM	D	30	C525B	9	87.9	79.0	VIOLATION
JetBlue Airways Corporation	12/28/2011	10:08:25 PM	A	30	A320	10	93.2	90.0	VIOLATION
JetBlue Airways Corporation	12/28/2011	10:31:25 PM	A	30	A320	10	93.3	90.0	VIOLATION
JetBlue Airways Corporation	12/28/2011	11:03:07 PM	D	30	A320	9	95.7	90.0	VIOLATION
Applied Science Services	12/29/2011	12:43:33 AM	A	30	DA42	10	82.9	79.0	VIOLATION
JetBlue Airways Corporation	12/29/2011	11:18:15 PM	D	30	A320	9	93.4	79.0	ALT ENF & VIO

**DEFINITIONS:**

**A/D** — Arrival and Departure

**RWY** — Runway

**A/C Type** — Aircraft Type

**SEL** — SENEL — Single Event Noise Equivalent Level

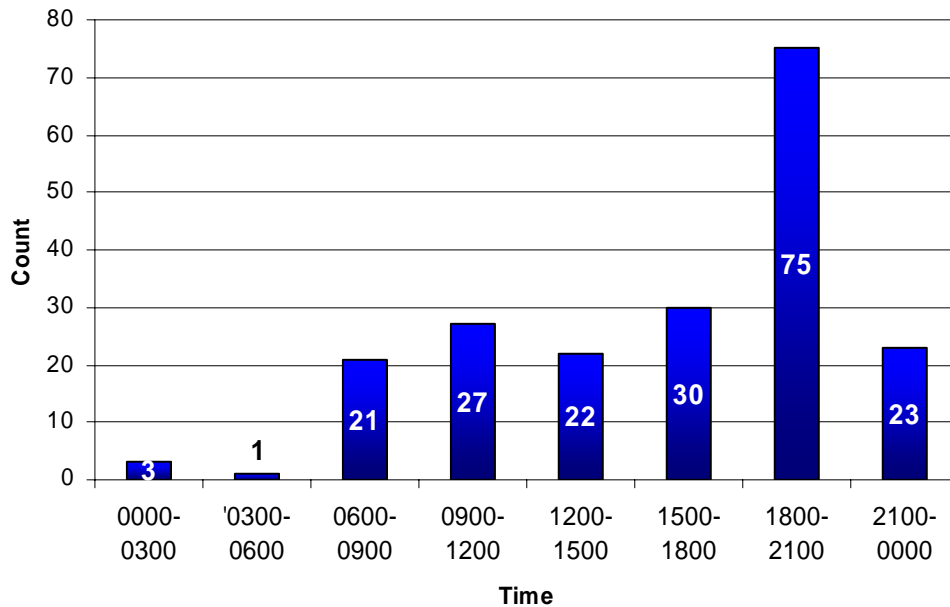
**ALT ENF** — Alternative Enforcement

**NMTID** — Noise Monitor

# December 2011

## LGB AIRCRAFT NOISE COMPLAINTS

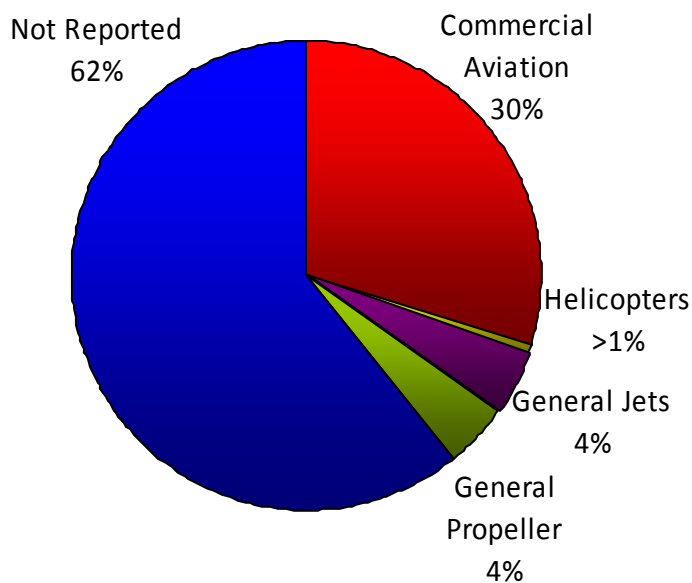
### Complaints per Hour



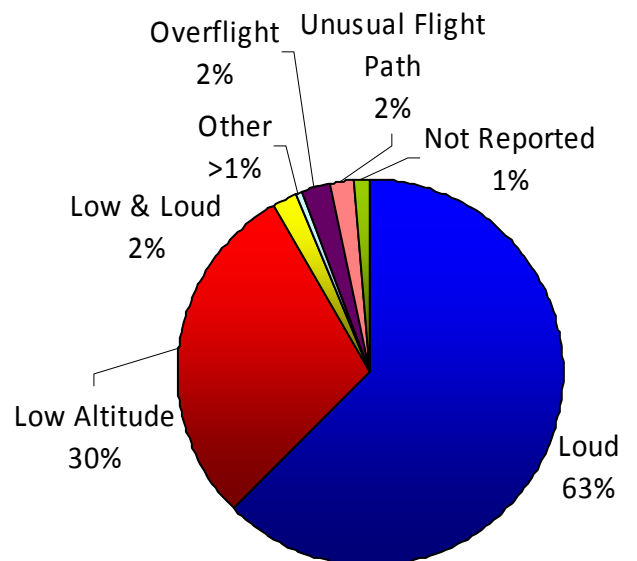
### Complaints By Zip Code

90740	8
90805	3
90807	7
92626	167
92649	3
92648	1
92782	1
Not Reported	12
<b>Grand Total</b>	<b>202</b>

### Complaints by Type of Aircraft



### Complaints by Type of Concern





# LONG BEACH AIRPORT

Building a Better Way to Fly



## Long Beach Airport

4100 E. Donald Douglas Drive, Long Beach, CA 90808

[www.lgb.org](http://www.lgb.org) • [lgbapt@longbeach.gov](mailto:lgbapt@longbeach.gov)

Administration • (562) 570-2619