



S U S T A I N A B L E

L O N G B E A C H

HISTORIC PAST

INNOVATIVE PRESENT

SUSTAINABLE FUTURE

Graywater Pilot Program Update

*Environmental Committee Meeting
June 26, 2012*

Larry Rich
Sustainability Coordinator



SUSTAINABLE
LONG BEACH

HISTORIC PAST

INNOVATIVE PRESENT

SUSTAINABLE FUTURE

Background

- March 22, 2011: City Council approves Graywater Pilot Program to install simple laundry to landscape graywater systems
- 172 applications received by Sept. 30, 2011
- Opportunity Drawing held October 27, 2011
- Four winners and four alternates selected from each city council district
- Total 36 installations funded by Water Dept.



Implementation

- November 2011 to January 2012: assessment meetings at property to determine suitability for a new system
 - Number of loads
 - Type of loads
 - Washer type
 - Size of landscape
 - Plants and trees for irrigation
 - 12 conditions of the Graywater Code
 - Property disqualified if deemed unsuitable
 - Alternate contacted for an assessment

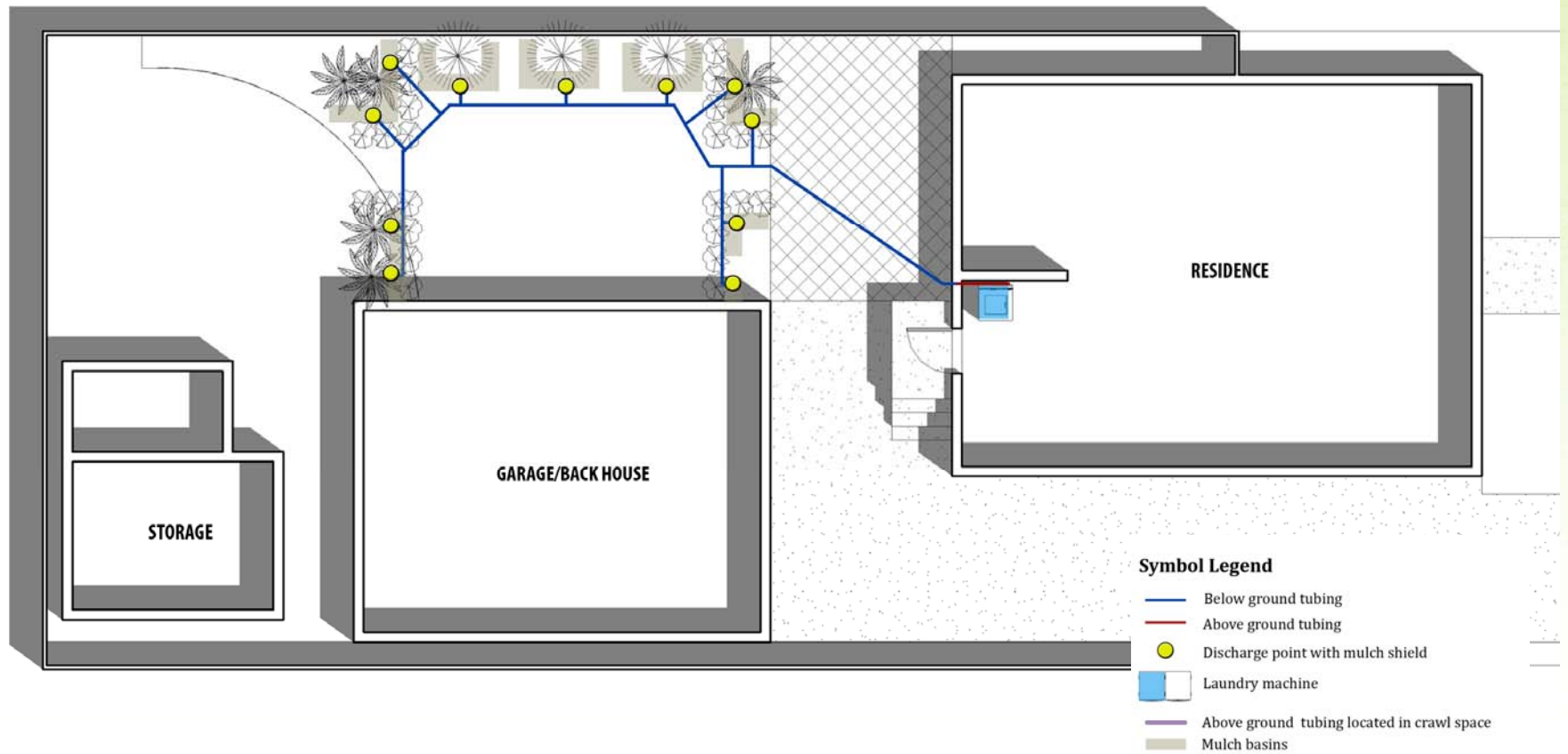


Pre-Installation Meetings

- Pre-installation meetings (ongoing)
 - System design and specifications finalized
 - Owner signs agreement
 - Installation date set based on homeowner availability and installation difficulty



Plot Plan



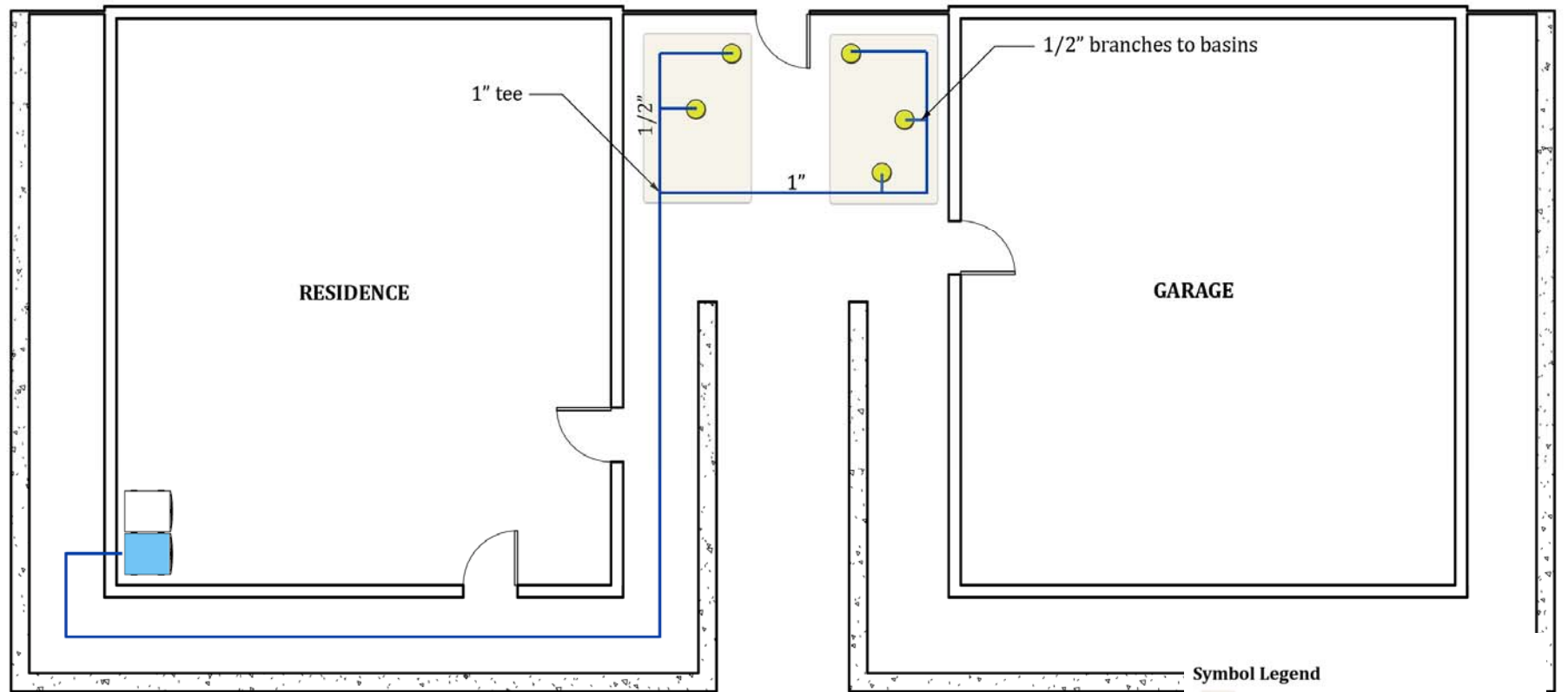
SUSTAINABLE
LONG BEACH

HISTORIC PAST

INNOVATIVE PRESENT

SUSTAINABLE FUTURE

Plot Plan



- Symbol Legend**
- Area of mulch basin (oval shaped trench)
 - Below ground tubing
 - Above ground tubing
 - Discharge point with mulch shield
 - Laundry machine
 - Above ground tubing located in crawl space



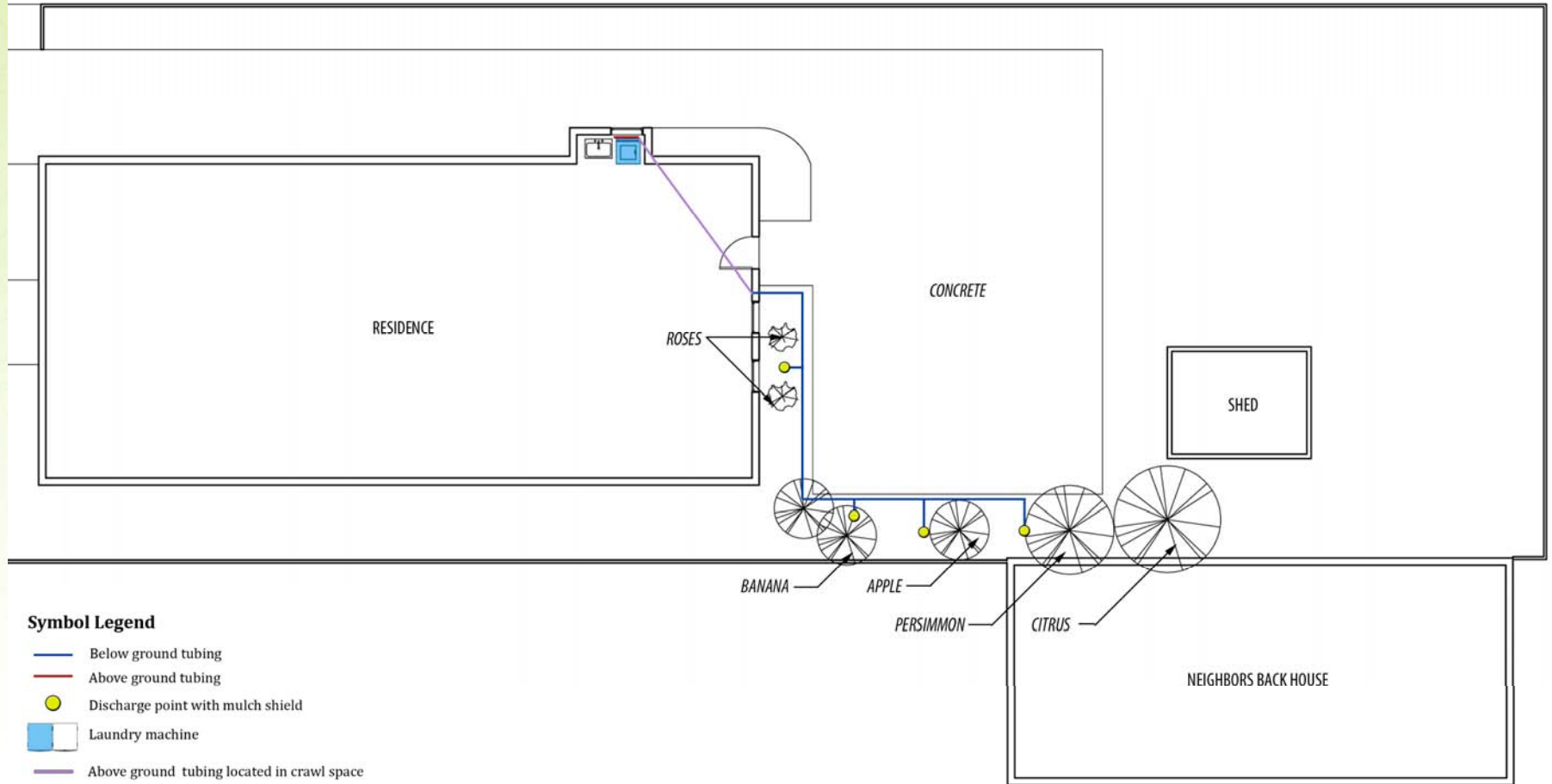
**SUSTAINABLE
LONG BEACH**

HISTORIC PAST

INNOVATIVE PRESENT

SUSTAINABLE FUTURE

Plot Plan



SUSTAINABLE
LONG BEACH

HISTORIC PAST

INNOVATIVE PRESENT

SUSTAINABLE FUTURE

Installations

- Installations
 - First installation Friday, February 24, 2012
 - Friday June 22, 2012 – 11th installation completed
 - One day installations
 - Completed by Green Job Trainees and Licensed Plumber
 - 6 scheduled for June / July
 - Every Friday until end of November 2012



Installations



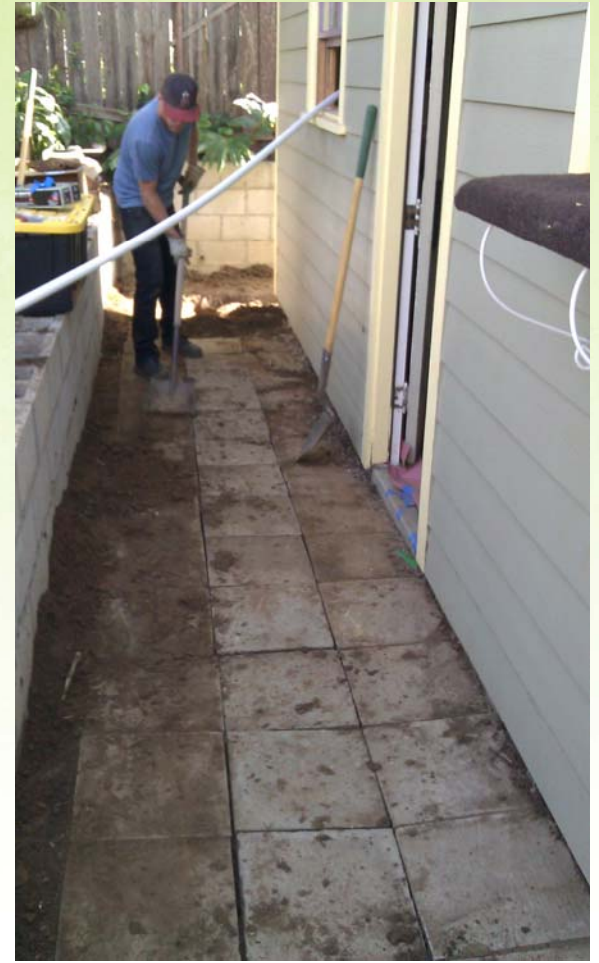
**SUSTAINABLE
LONG BEACH**

HISTORIC PAST

INNOVATIVE PRESENT

SUSTAINABLE FUTURE

Installations



**SUSTAINABLE
LONG BEACH**

HISTORIC PAST

INNOVATIVE PRESENT

SUSTAINABLE FUTURE

Installations



SUSTAINABLE
LONG BEACH

HISTORIC PAST

INNOVATIVE PRESENT

SUSTAINABLE FUTURE



**SUSTAINABLE
LONG BEACH**

HISTORIC PAST

INNOVATIVE PRESENT

SUSTAINABLE FUTURE



**SUSTAINABLE
LONG BEACH**

HISTORIC PAST

INNOVATIVE PRESENT

SUSTAINABLE FUTURE



**SUSTAINABLE
LONG BEACH**

HISTORIC PAST

INNOVATIVE PRESENT

SUSTAINABLE FUTURE

Moving Forward

- 11 down, 25 more to go
 - Projected completion Jan/Feb 2013
- Final Report on experiences during Pilot
- Development of DIY graywater manual

