

**CITY OF LONG BEACH  
ALAMITOS BAY MARINA  
MARINA  
REHABILITATION  
PROJECT**

MARK	DATE	DESCRIPTION
PROJ NO:	P506060024	
SCALE:	1" = 80'	
DATE:	1/15/08	
DESIGNED BY:		
DRAWN BY:	J.S.Y.	
CHECKED BY:		

SHEET TITLE

**PROJECT  
AREA**

C-01



**LEGEND**

- AREA TO BE DREDGED
- PARKING AREA TO BE REPAVED (NO ISLANDS TO BE REMOVED)
- ALL EXISTING DOCKS AND GANGWAYS TO BE REPLACED. (NEW DOCK LAYOUT SHOWN)
- EXISTING RESTROOM TO BE DEMOLISHED
- NEW RESTROOM
- EXISTING RESTROOM TO BE REFINISHED
- NEW BOAT HOIST

I:\ConMan\Cad\10310\dwg\Alamos Bay Marina\Planning Fig 08-01-14\C-03.dwg, Plotted: Feb 25, 2008 - 8:55am





CONSULTANTS:

ALAMITOS BAY MARINA  
 LANDSIDE IMPROVEMENT PROJECT  
 LONG BEACH, CALIFORNIA

REVISIONS:	MARK	DATE	BID DOCUMENTS	DESCRIPTION

PROJ NO: P506060024  
 SCALE: 1" = 20'  
 DATE: 10/01/07  
 DESIGNED BY:  
 DRAWN BY: J.S.Y./D.G.  
 CHECKED BY: C.O.D.

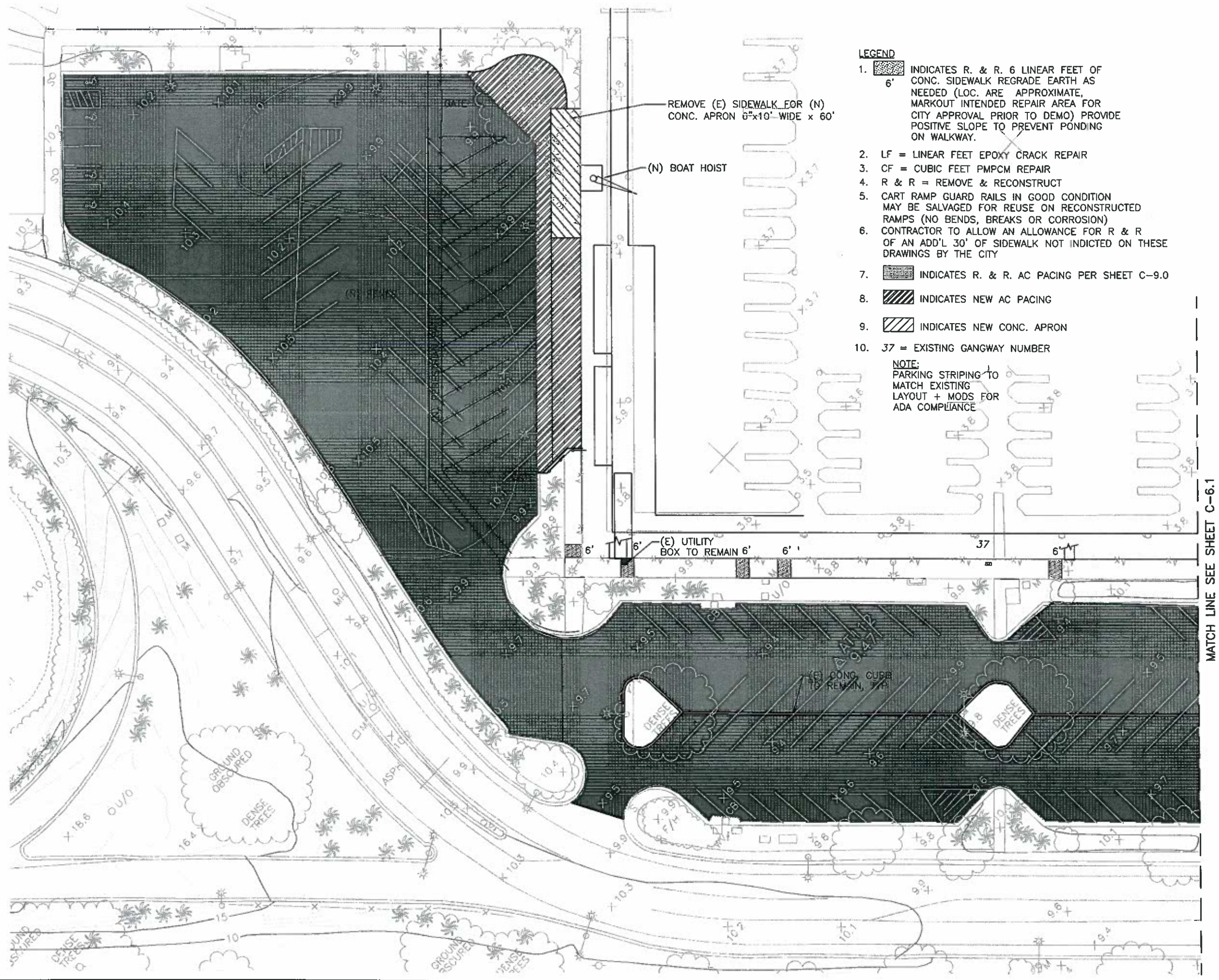
SHEET TITLE:  
**DEMOLITION  
 PLAN  
 BASIN 4**

SHEET NO.  
**C-6.0**  
 SHEET 17 OF 49

**LEGEND**



- 6' INDICATES R. & R. 6 LINEAR FEET OF CONC. SIDEWALK REGRADE EARTH AS NEEDED (LOC. ARE APPROXIMATE, MARKOUT INTENDED REPAIR AREA FOR CITY APPROVAL PRIOR TO DEMO) PROVIDE POSITIVE SLOPE TO PREVENT PONDING ON WALKWAY.
- LF = LINEAR FEET EPOXY CRACK REPAIR
- CF = CUBIC FEET PMPCM REPAIR
- R & R = REMOVE & RECONSTRUCT
- CART RAMP GUARD RAILS IN GOOD CONDITION MAY BE SALVAGED FOR REUSE ON RECONSTRUCTED RAMPS (NO BENDS, BREAKS OR CORROSION)
- CONTRACTOR TO ALLOW AN ALLOWANCE FOR R & R OF AN ADD'L 30' OF SIDEWALK NOT INDICATED ON THESE DRAWINGS BY THE CITY
- INDICATES R. & R. AC PACING PER SHEET C-9.0
- INDICATES NEW AC PACING
- INDICATES NEW CONC. APRON
- 37 = EXISTING GANGWAY NUMBER

NOTE:  
 PARKING STRIPING TO MATCH EXISTING LAYOUT + MODS FOR ADA COMPLIANCE

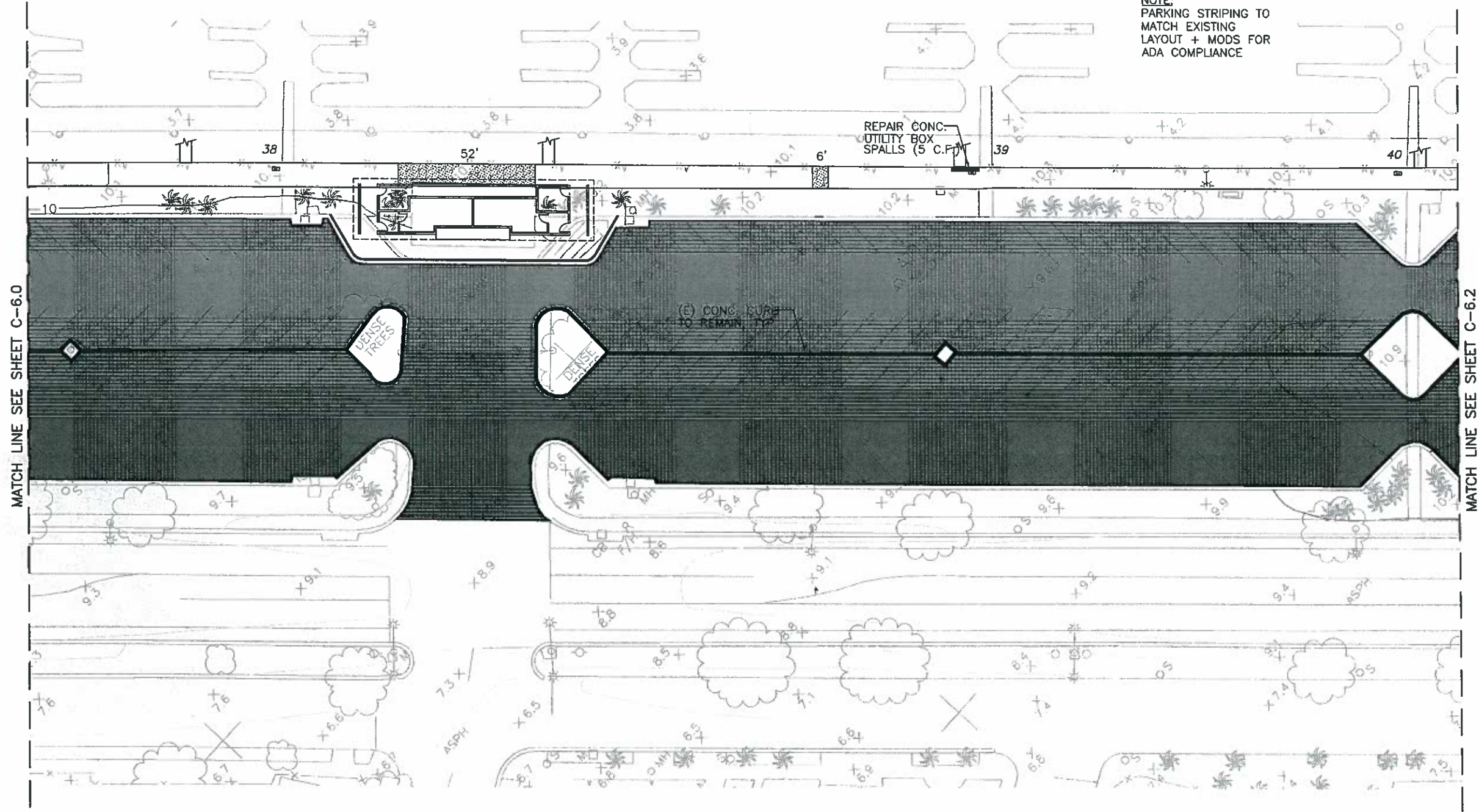




**LEGEND**

1.  INDICATES R. & R. 6 LINEAR FEET OF CONC. SIDEWALK REGRADE EARTH AS NEEDED (LOC. ARE APPROXIMATE, MARKOUT INTENDED REPAIR AREA FOR CITY APPROVAL PRIOR TO DEMO) PROVIDE POSITIVE SLOPE TO PREVENT PONDING ON WALKWAY.
2. LF = LINEAR FEET EPOXY CRACK REPAIR
3. CF = CUBIC FEET PMPCM REPAIR
4. R & R = REMOVE & RECONSTRUCT
5.  INDICATES R. & R. AC PAVING PER SHEET C-9.0
6. 39 = EXISTING GANGWAY NUMBER

**NOTE:**  
PARKING STRIPING TO MATCH EXISTING LAYOUT + MODS FOR ADA COMPLIANCE



**Trap Systems**  
8700 E. Pacific Coast Highway Suite 201  
Long Beach, California 90803  
PHONE: 562-494-6874  
FAX: 562-594-4875

CONSULTANTS:

ALAMITOS BAY MARINA  
LANDSIDE IMPROVEMENT PROJECT  
LONG BEACH, CALIFORNIA

REVISIONS:	MARK	DATE	BID DOCUMENTS	DESCRIPTION

PROJ NO: P506060024  
SCALE: 1" = 20'  
DATE: 10/1/07  
DESIGNED BY:  
DRAWN BY: J.S.Y.J.G.  
CHECKED BY: C.D.D.



SHEET TITLE:  
**DEMOLITION PLAN + BASIN 4**

SHEET NO.  
C-6.1  
SHEET 18 OF 49

C:\ProgramData\CadSoft\AutoCAD 2007\Projects\Basin 4\10-1-07\Basin 4.dwg, Plotter: Feb 20, 2008, 8:52am

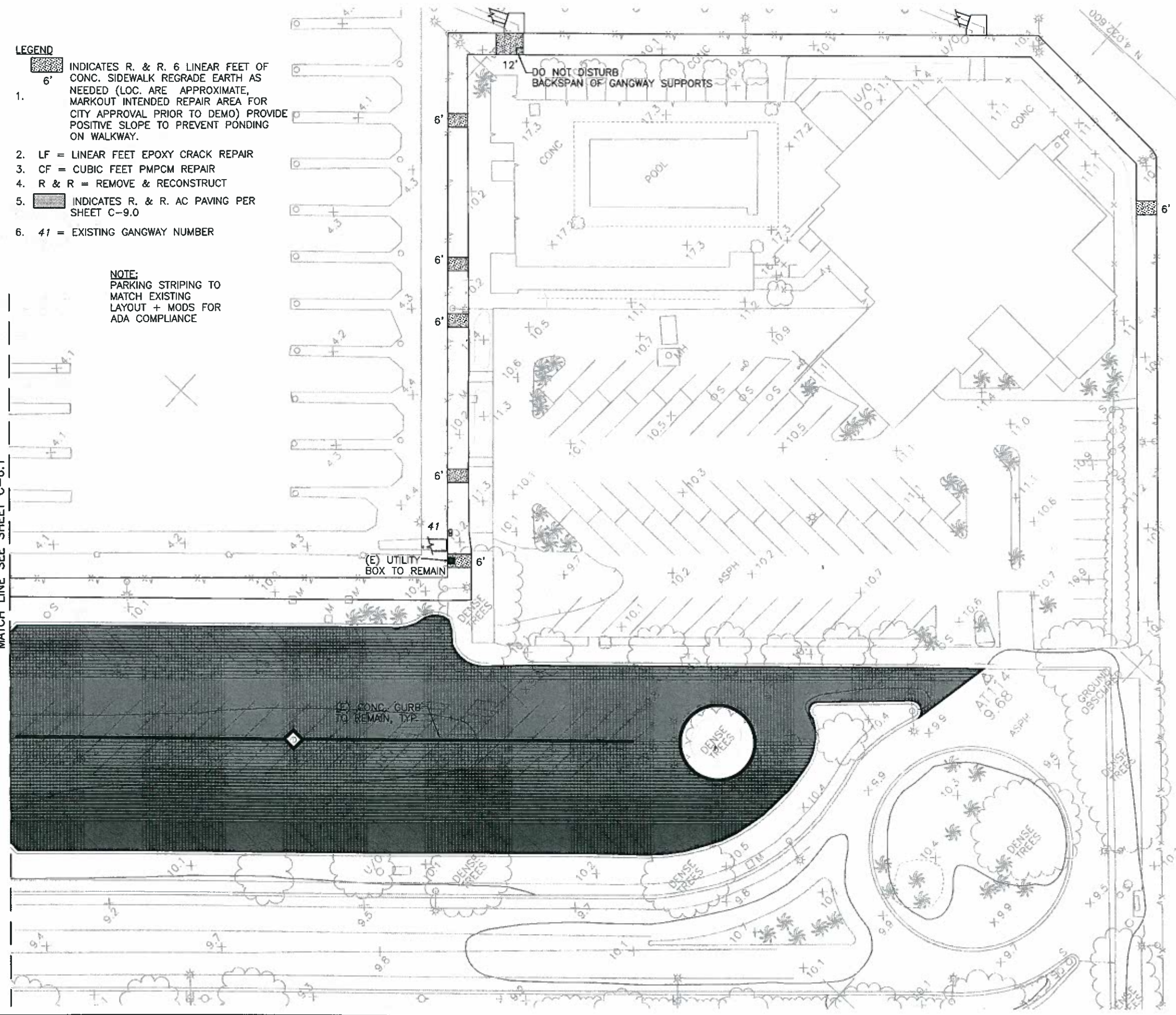


**LEGEND**

1.  INDICATES R. & R. 6 LINEAR FEET OF CONC. SIDEWALK REGRADE EARTH AS NEEDED (LOC. ARE APPROXIMATE, MARKOUT INTENDED REPAIR AREA FOR CITY APPROVAL PRIOR TO DEMO) PROVIDE POSITIVE SLOPE TO PREVENT PONDING ON WALKWAY.
2. LF = LINEAR FEET EPOXY CRACK REPAIR
3. CF = CUBIC FEET PMPCM REPAIR
4. R & R = REMOVE & RECONSTRUCT
5.  INDICATES R. & R. AC PAVING PER SHEET C-9.0
6. 41 = EXISTING GANGWAY NUMBER

**NOTE:**  
PARKING STRIPING TO MATCH EXISTING LAYOUT + MODS FOR ADA COMPLIANCE

MATCH LINE SEE SHEET C-6.1



**TransSystems**  
 6700 E. Pacific Coast Highway Suite 201  
 Long Beach, California 90803  
 PHONE: 562-594-6974  
 FAX: 562-594-6975

CONSULTANTS:

ALAMITOS BAY MARINA  
 LANDSIDE IMPROVEMENT PROJECT  
 LONG BEACH, CALIFORNIA

REVISIONS:	MARK	DATE	BID DOCUMENTS	DESCRIPTION

PROJ NO: P506060024  
 SCALE: 1" = 20'  
 DATE: 10/01/07  
 DESIGNED BY:  
 DRAWN BY: J.S.Y./D.G.  
 CHECKED BY: C.D.D.

SHEET TITLE:  
**DEMOLITION PLAN BASIN 4**

SHEET NO.  
**C-6.2**  
 SHEET 19 OF 49

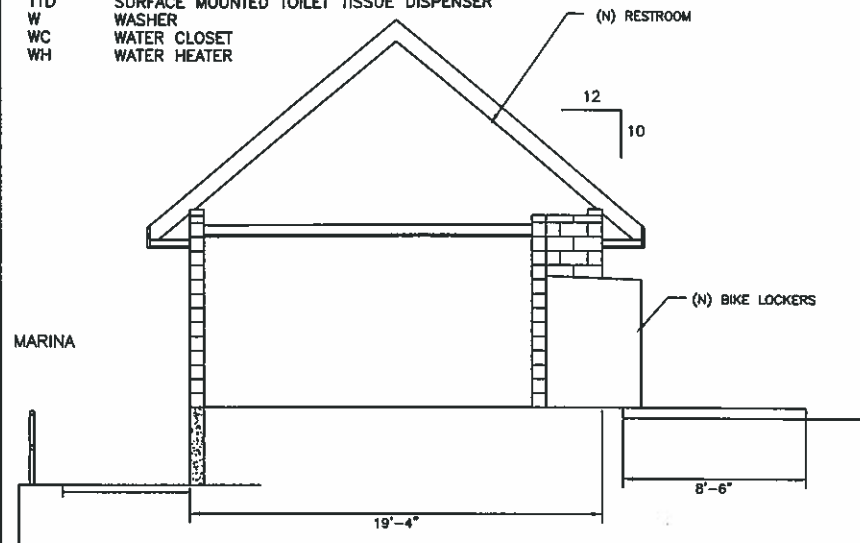






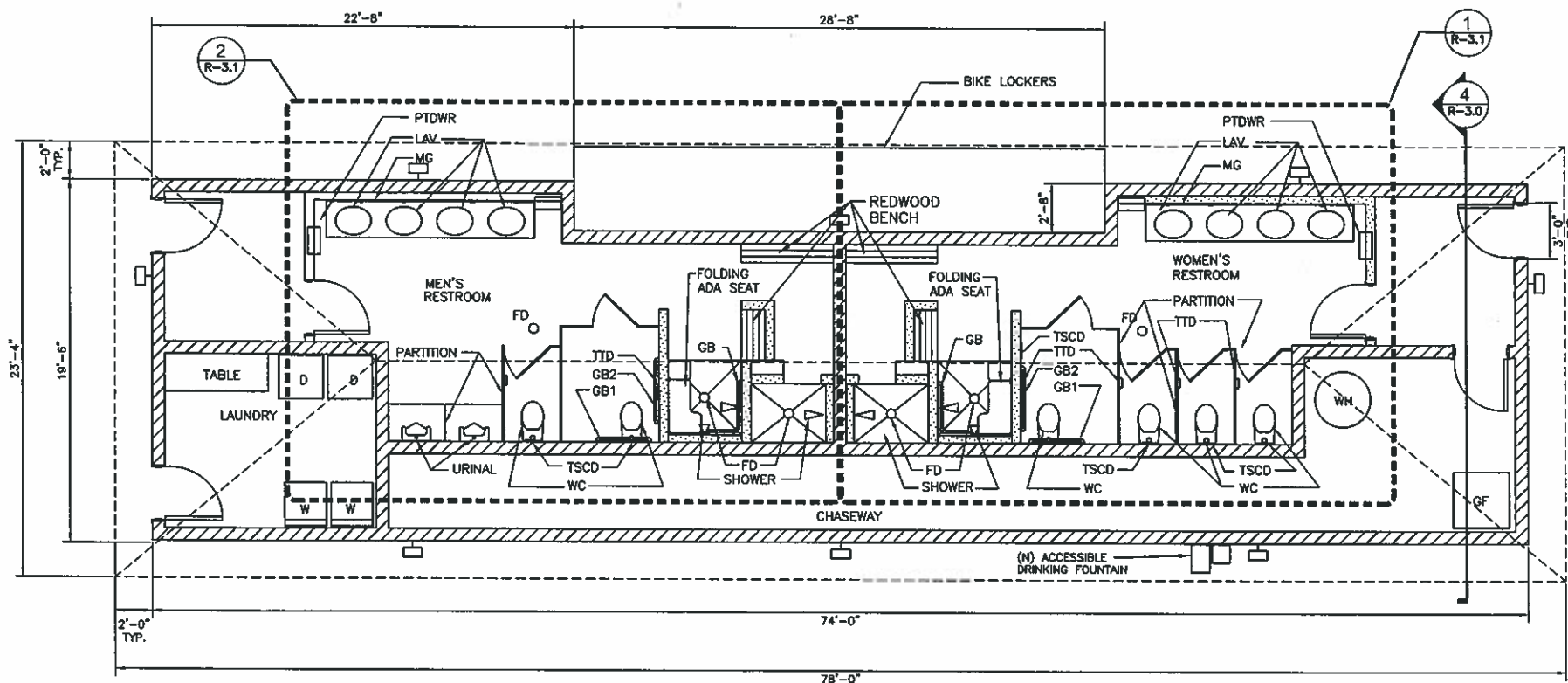
**TOILET ACCESSORY ABBREVIATIONS:**

- CMU CONCRETE MASONRY UNIT
- D DRYER
- FD FLOOR DRAIN
- GF GAS FURNACE EXCEPT BASIN 4
- GB1 36" GRAB BAR
- GB2 42" GRAB BAR
- LAV LAVATORY
- MG MIRROR, GLASS
- PTDWR PAPER TOWEL DISPENSER WITH WASTE RECEPTACLE
- TSCD SURFACE MOUNTED TOILET SEAT COVER DISPENSER
- TTD SURFACE MOUNTED TOILET TISSUE DISPENSER
- W WASHER
- WC WATER CLOSET
- WH WATER HEATER



**SECTION**  
SCALE: 1/4" = 1'-0"

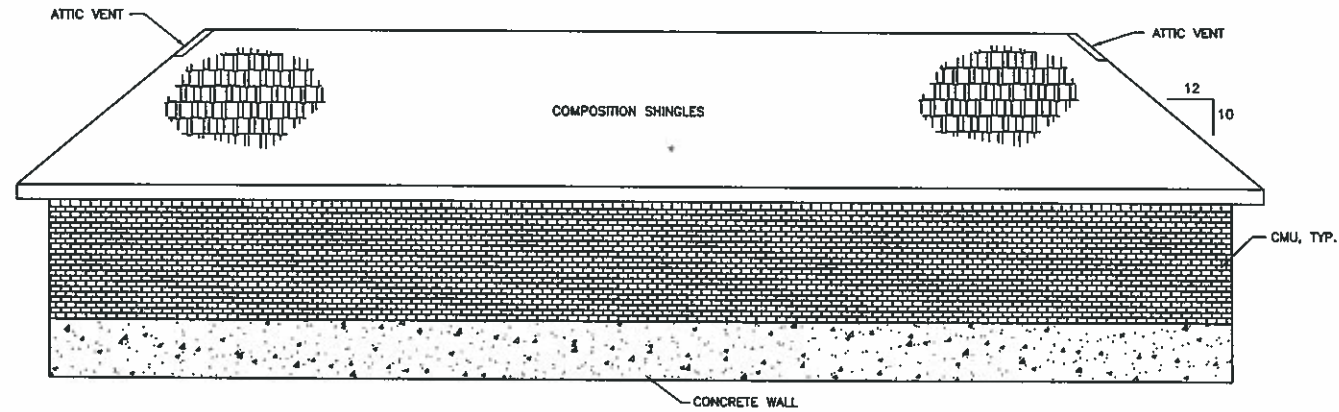
4



**NEW RESTROOM PLAN**  
SCALE: 1/4" = 1'-0"

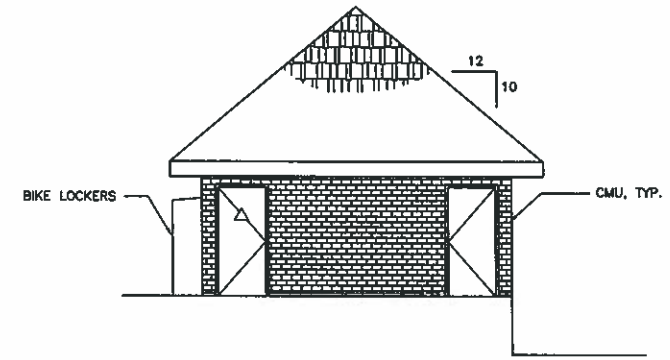
1

- CMU WALL
- STUD WALL



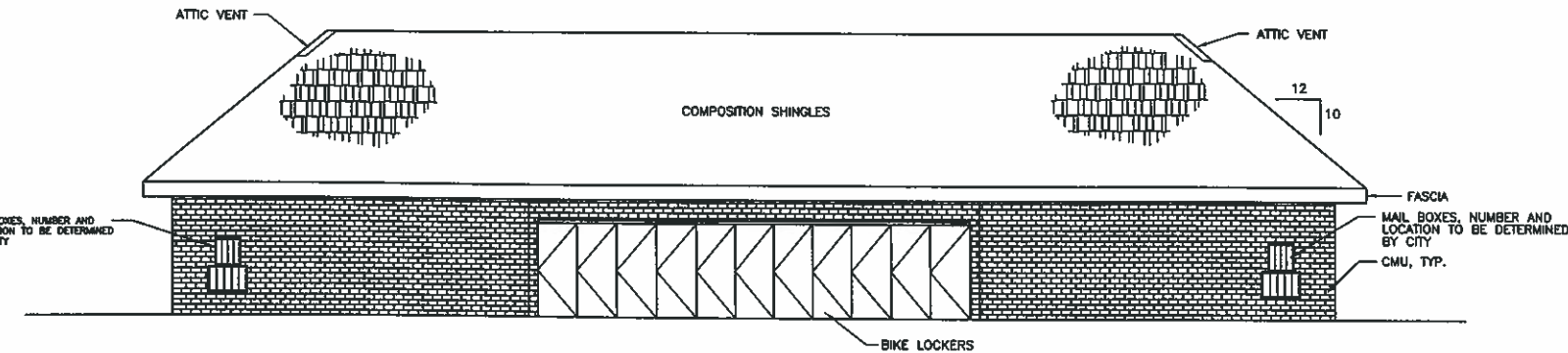
**FRONT ELEVATION**  
SCALE: 3/16" = 1'-0"

5



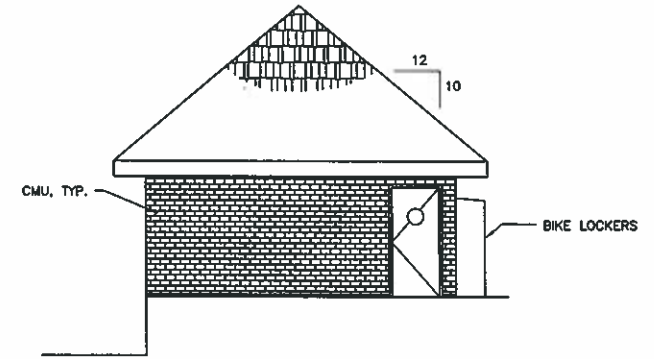
**RIGHT ELEVATION**  
SCALE: 3/16" = 1'-0"

2



**REAR ELEVATION**  
SCALE: 3/16" = 1'-0"

6



**LEFT ELEVATION**  
SCALE: 3/16" = 1'-0"

3

**TranSystems**  
8700 E. Pacific Coast Highway, Suite 201  
Long Beach, California 90803  
PHONE: 562-594-8974  
FAX: 562-594-8975

CONSULTANTS:

ALAMITOS BAY MARINA  
RESTROOM RECONSTRUCTION PROJECT  
LONG BEACH, CALIFORNIA

REVISIONS:	MARK	DATE	DESCRIPTION

PROJ NO: PS06060024  
SCALE: AS SHOWN  
DATE: 10/01/07  
DESIGNED BY:  
DRAWN BY: J.S.Y.  
CHECKED BY: C.D.D.

SHEET TITLE:  
**NEW RESTROOM  
PLAN, ELEVATIONS,  
& SECTION**

SHEET NO.  
**R-3.0**  
SHEET 3 OF 40

