



02/27/2020

29538

Re: EL-082-00(SM116) – LONG BEACH SENIOR CENTER, USID# 51804, FA# 10068086,  
1150 4<sup>th</sup> Street, Long Beach, CA 90802

Department of Parks Recreation and Marine  
1150 4<sup>th</sup> Street  
Long Beach, CA 90802

Subject: AT&T RF Safety Policy

You have been identified as the owner, manager, or operator of a property where AT&T maintains a cell site. As you may know, cell sites operate using radio frequency (“RF”) energy and exposure to this energy is regulated by the Federal Communications Commission (“FCC”). This letter is intended to inform you of AT&T’s RF Safety Plan for complying with those regulations at this site. An RF Safety Plan may include barriers or other physical mitigation to minimize exposure to RF energy, education about the potential for RF exposure and how to avoid it, or a program to entry to areas where RF exposure could occur.

**AT&T’s RF Safety Policy.** This policy requires a qualified RF safety engineer to periodically review AT&T’s cell sites to confirm compliance with FCC RF exposure rules. For some sites, barriers are needed to restrict public or worker access to RF energy in excess of maximum permissible levels. For other sites, Informational signs or Alerting signs (i.e. Notice, Caution, or Warning) may notify workers and the public that may have access to areas near the antennas of the presence and risks of RF energy. AT&T periodically conducts audits to evaluate their continued presence and integrity. Where appropriate, these preventative measures should also be combined with the entry restrictions discussed below, such as locks at all access points. The sections below explain the RF Safety Plan for this site.

**Entry Restrictions.** Because barriers cannot be placed to restrict entry into areas around one or more antennas at this site, cooperation between you and AT&T is needed to keep potential RF exposure below FCC imposed maximum permissible levels. If followed, these instructions below will prevent excess RF exposure to workers who need to access the areas around the antennas.

- *Restrict Access.* Restrict access to areas in and around where AT&T antennas are located by implementing the following measures:
  - Maintain a single access point and ensure that it remains locked/secured at all times. Use ladder guards if ladders are needed to access the area.
  - Have a single point of contact for accessing the area, such as a security guard or building management contact; and
  - Allow entry to only those persons who need to perform work.



- *Administrative Procedures.*
  - Provide a person who needs to access the controlled area, before they enter the area, with a copy of the RF Safety Information document attached as Exhibit A and ensure that they review the diagram provided with the location of the antennas.
  - Utilize sign-in, sign-out procedures to monitor who is accessing the controlled area and provide the list to AT&T upon request. An example of a log for workers to sign-in and sign-out is provided as attached Exhibit B.
  - If other providers' antennas are located on the property, contact those providers for guidance about their antennas.
  
- *Shut-Down Antennas.*
  - Contact AT&T's Mobility National Reporting Center (MNRC) at 800.638.2822 and follow the prompts for RF Safety to request the turn down of antennas at least two weeks before any scheduled work needs to be performed in the area near AT&T antennas. If work must be performed in an emergency, advise the MNRC of that fact.
  - Contact the MNRC when the worker has completed work in the controlled area so that the antennas can be reactivated.
  - Contact the MNRC if any signs and/or barriers that were located at the site have been damaged, destroyed, or rearranged by any person or by weather.

Please sign below and return to me acknowledging receipt of this letter and your agreement to follow these processes to control entry to the area where AT&T's antennas are located. Please do not hesitate to contact me if you have any additional questions.

Sincerely,

Essie Polard  
 Senior RF Safety Engineer  
 100 W. Alondra Blvd. Gardena CA. 90248  
[ep8041@att.com](mailto:ep8041@att.com)

LINDA F. TATUM

Landlord Name (printed)

**EXECUTED PURSUANT  
 TO SECTION 301 OF  
 THE CITY CHARTER**

Linda F. Tatum

Landlord Signature

7/6/20 Date

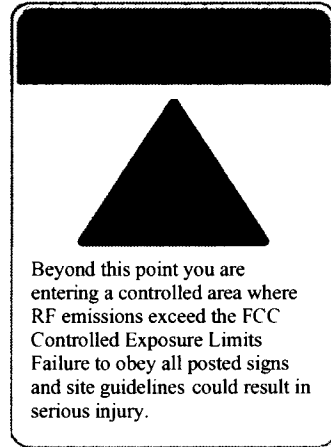
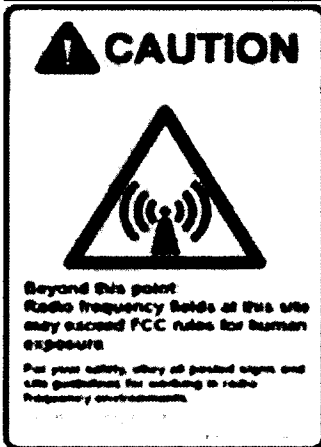
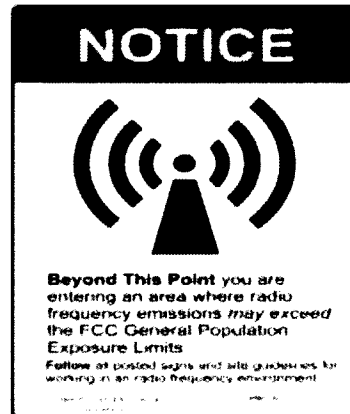
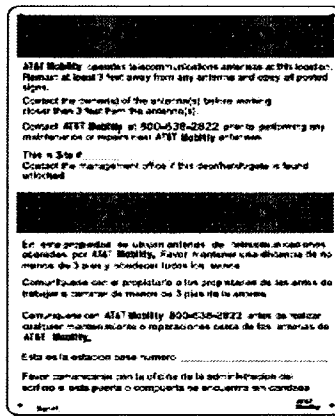
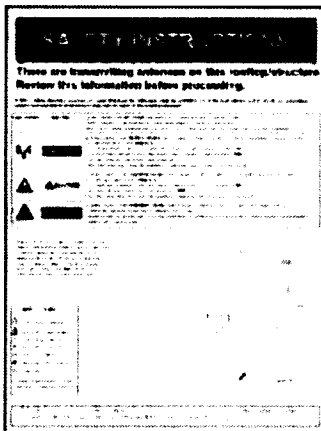
APPROVED AS TO FORM  
APRIL 30, 2020  
 CHARLES PARKIN, City Attorney  
 By [Signature]  
 ARTURO D. SANCHEZ  
 DEPUTY CITY ATTORNEY



## Exhibit A RF Safety Information AT&T Cell Sites on Third Party Property

**FCC Rules.** The Federal Communications Commission (“FCC”), which has sole jurisdiction to address RF safety issues, has adopted rules that limit **exposure** to RF energy from cell sites. Wireless carriers, such as AT&T, must confirm compliance with those rules prior to operating any cell site. For its part, AT&T maintains a rigorous RF Safety policy that requires a qualified RF safety engineer, on a regular basis, to review AT&T’s cell sites to ensure compliance with the FCC RF safety rules.

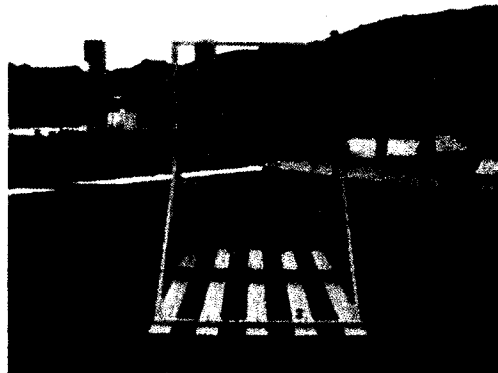
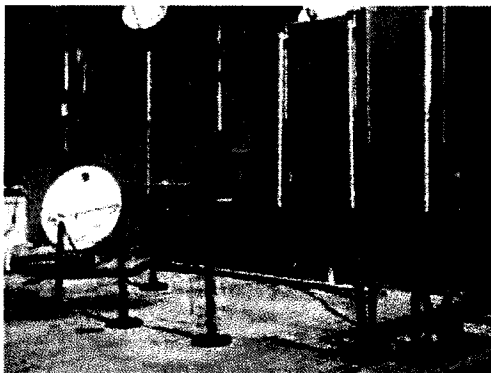
**Measures to Mitigate RF Exposure.** For some cell sites, particularly those on rooftops and other areas where antennas are easy to access, exposure can be limited by adopting mitigation measures at the site, such as placing barriers and/or signs. Signs may consist of Information only signs or Alerting signs, such as Notice, Caution, and Warning signs, which notify workers and the public that access to certain areas may or do present a risk of exposure to RF energy. Those signs may also direct the worker or public of how to contact the provider to shut down the site while work occurs. The following pictures provide examples of these signs.





It is crucial that you read and abide by the instructions on these signs and that you contact AT&T if you have any questions or need the power turned down within the area where the signs are present to perform any tasks.

At some sites, barriers may also be used to restrict access to areas near antennas to insure that workers and the public are not exposed to excessive RF energy. Barriers can take many forms. Here are some examples:



Signs and barriers are placed where needed to protect you from exposure to excess RF energy. It is crucial that you allow these measures to serve their purpose and not access areas beyond any physical or visual barriers. You should also not move any stanchions, signs, or other barriers that may be present at the site. If you need to perform any work within an area that has been marked by signs or barriers, you should contact AT&T at the number provided on the signs.

**Access to the Controlled Area.** Prior to accessing the areas where AT&T's antennas may be located, make sure and follow the procedures of the Landlord or Property Manager for accessing the area so that control is maintained. You should also follow the instructions below on Working in the Controlled Area. When you leave the controlled area, please make sure to close doors, hatches, or other manner in which you accessed the area and secure those access points (e.g. lock the doors, padlock the cage or hatch, etc.).



**Working in the Controlled Area.** The attached diagram/map shows the location of AT&T antennas, signs, and/or barriers on the property, the access points to the controlled area where access is restricted, and the areas (highlighted) where access should be restricted to minimize RF exposure. Review this diagram/map carefully so that you understand the location of the antennas relative to the location of the work you need to perform. If you need to enter a highlighted area or any other areas at the property that are marked with signs or barriers, you or the Landlord or property manager should contact AT&T's Mobility National Reporting Center (MNRC) at **800.638.2822**, follow the prompts for RF Safety, and request a power down of the antenna(s) at your location. The deactivation of AT&T transmitters may take up to 7 days and should be planned at least 2 weeks in advance of any scheduled work. When you or the Landlord make the request, please provide the MNRC with the following site id (USID# 51804) and the sector from the drawing (e.g. A, B, C, etc.) you would like turned down. It is important to note the AT&T MNRC can only coordinate the turning down of AT&T transmitters. Other wireless carriers and non-AT&T transmitters may be present at your location and should also be evaluated. You may need to contact those other wireless carriers. Please make sure and advise the Landlord or property manager when your work in the controlled area is completed so that they may notify AT&T and allow for the reactivation of the antennas.

**RF Exposure.** Guidance on the potential risks of exposure to RF emissions can be found in the FCC's publication OET 56-Questions and Answers about Biological Effects and Potential Hazards of Radiofrequency Electromagnetic Fields (1999), which may be accessed via this link: [http://transition.fcc.gov/Bureaus/Engineering\\_Technology/Documents/bulletins/oet56/oet56e4.pdf](http://transition.fcc.gov/Bureaus/Engineering_Technology/Documents/bulletins/oet56/oet56e4.pdf). The FCC's RF exposure rules are at 47 CFR §1.1307(b) and can be accessed at: [http://www.ecfr.gov/cgi-bin/text-idx?c=ecfr&tpl=/ecfrbrowse/Title47/47cfrv1\\_02.tpl](http://www.ecfr.gov/cgi-bin/text-idx?c=ecfr&tpl=/ecfrbrowse/Title47/47cfrv1_02.tpl).



**DO NOT WORK IN FRONT OF AREAS IN BLUE ZONE OR WHERE INDICATED  
BELOW WITH A RED ARROW UNTIL THE SITE IS SHUT DOWN**

RF Exposure Simulation For EL-082-0015M1161 - LONG BEACH SENIOR CENTER  
Composite Diagram - Detailed View

