



CITY OF LONG BEACH

DEPARTMENT OF PARKS, RECREATION & MARINE

2760 N. Studebaker Road, Long Beach, CA 90815-1697
(562) 570-3100 • FAX (562) 570-3109
www.LBParks.org



selected
best in the nation

March 8, 2016

HONORABLE MAYOR AND CITY COUNCIL
City of Long Beach
California

RECOMMENDATION:

Authorize the City Manager to execute the Funding Agreement between the County of Los Angeles and the City of Long Beach, for community engagement activities related to the Countywide Parks Needs Assessment; receive and file the project lists from the five Planning Areas and two regional parks in the City of Long Beach; and,

Increase appropriations in the General Fund (GF) in the Parks, Recreation and Marine Department (PR) by \$12,500. (Citywide)

DISCUSSION

On February 3, 2015, the Los Angeles County Board of Supervisors approved a plan to produce a Countywide Comprehensive Park and Recreation Needs Assessment (Assessment) to analyze current public parks, open space, and cultural and recreational assets and needs. Participants include all 88 cities in Los Angeles County (County), state and local agencies, and nonprofit organizations based in the County. The goal of the Assessment is to conduct a comprehensive assessment of the park and recreation needs and opportunities in the County. The Assessment is on an aggressive timeline, with the final summary report, including a prioritized list of park projects and funding needs from across the County, due in June 2016.

The Department of Parks, Recreation and Marine (PRM) is serving as the lead agency on the Assessment for the City of Long Beach (City), and is responsible for providing data on the condition of park amenities in the City, hosting six community outreach workshops, and bringing the community's prioritized list of park projects to the City Council for approval.

In August and September 2015, PRM staff performed an inventory of existing conditions of all park amenities in regional parks, community parks, neighborhood parks, and pocket parks. This information, along with park location and acreage information, was provided to the County. The City also prepared project lists for each Planning Area that reflected priority capital and rehabilitation projects for presentation in community outreach workshops.

"We create community and enhance the quality of life through people, places, programs and partnerships"

HONORABLE MAYOR AND CITY COUNCIL

March 8, 2016

Page 2

The County required at least one community outreach workshop be held in each Planning Area (areas of roughly equal population) for the purpose of gathering comparable information throughout the County. A stipend of \$2,500 per Planning Area is available from the County to defray event costs. The City must enter into the Funding Agreement for Community Engagement Activities Related to the Countywide Parks Needs Assessment (Funding Agreement) in order to be eligible for the stipend. The process for the community outreach workshops was established by the County through an Outreach Toolkit to ensure a consistent feedback process across all 188 Planning Areas throughout the County. The City was divided into five Planning Areas: North, East, South, West, and Central. In addition to holding one outreach workshop in each Planning Area, PRM held a Spanish-language workshop at Admiral Kidd Park. Attached are maps showing Planning Areas Countywide (Attachment A), and Long Beach Planning Areas overlaid on Long Beach Council Districts (Attachment B).

In January and February 2016, PRM facilitated six community outreach workshops designed to engage the community in the County's Assessment process, and to prioritize the community's list of park projects in each Planning Area. The Long Beach outreach workshops were held:

- Wednesday, January 6, 2016, at Veterans Park Community Center (West)
- Monday, January 11, 2016, at the Miller Family Health Education Center (Central)
- Thursday, January 14, 2016, at Houghton Park Community Center (North)
- Thursday, January 21, 2016, at Bixby Park Community Center (South)
- Monday, January 25, 2016, at Whaley Park Community Center (East)
- Monday, February 1, 2016, at Admiral Kidd Park Community Center (Spanish language)

The County's process required up to ten of the community's park projects be provided for each Planning Area. For the purposes of this Assessment, the County categorized projects into three types: 1) repairing existing park amenities; 2) adding or replacing amenities in an existing park; and 3) creating a new park or specialty amenity (creation of a new park would be counted as three projects). The result of each outreach workshop was a list of the community's prioritized projects for that Planning Area. Prioritized projects from the Spanish-language outreach workshop were merged with the lists for the individual Planning Areas. The projects included on the lists from the six Long Beach community outreach workshops reflect the community's input about local priorities and do not necessarily coincide in all cases with the City's list of projects (Attachment C).

Regional parks and nature centers are being addressed separately from other parks. The County has identified two Long Beach parks as being regional parks: El Dorado Regional Park and Heartwell Park. Up to five projects may be submitted for each regional park and up to three projects may be submitted for each nature center. Attached are lists of the community's prioritized projects for each of the five Long Beach Planning Areas, along with the City's projects for El Dorado Regional Park, Heartwell Park, and the El Dorado Nature Center (Attachment D).

Once the County receives the lists of prioritized projects from all Planning Areas across Los Angeles County, total costs of the submitted projects will be estimated based on land acquisition costs, park amenity costs, and existing infrastructure needs. The County will develop a Summary Report that will include an executive summary, an introduction and

HONORABLE MAYOR AND CITY COUNCIL

March 8, 2016

Page 3

description of the planning context, a description of existing conditions, the community outreach strategy, a list of future park projects, and an appendix containing the full list of projects Countywide. The results of the Assessment may be used by the County to inform potential future Countywide park funding and park planning decisions. Should future County park funding become available, the County has indicated funding will not be limited or restricted to the submitted projects, and would consider all funding priorities from cities.

This matter was reviewed by Deputy City Attorney Linda T. Vu on February 9, 2016 and by Budget Management Officer Victoria Bell on February 11, 2016.

TIMING CONSIDERATIONS

City Council action is requested on March 8, 2016, in order to submit the Funding Agreement and the lists of prioritized projects to the County of Los Angeles by the established deadline.

FISCAL IMPACT

Contract costs for the outreach workshops, translation services, and tabulation of community input totaled \$19,050, and are currently unbudgeted. The requested appropriation increase will offset \$12,500 of these costs, and the Department of Parks, Recreation and Marine will absorb the remaining \$6,550 in its General Fund (GF). An appropriation increase in the amount of \$12,500 is requested in the General Fund (GF) in the Parks, Recreation and Marine Department (PR). There is no local job impact associated with this recommendation.

SUGGESTED ACTION:

Approve recommendation.

Respectfully submitted,



STEPHEN P. SCOTT
INTERIM DIRECTOR OF PARKS, RECREATION AND MARINE

SS:AGM:MR:sg

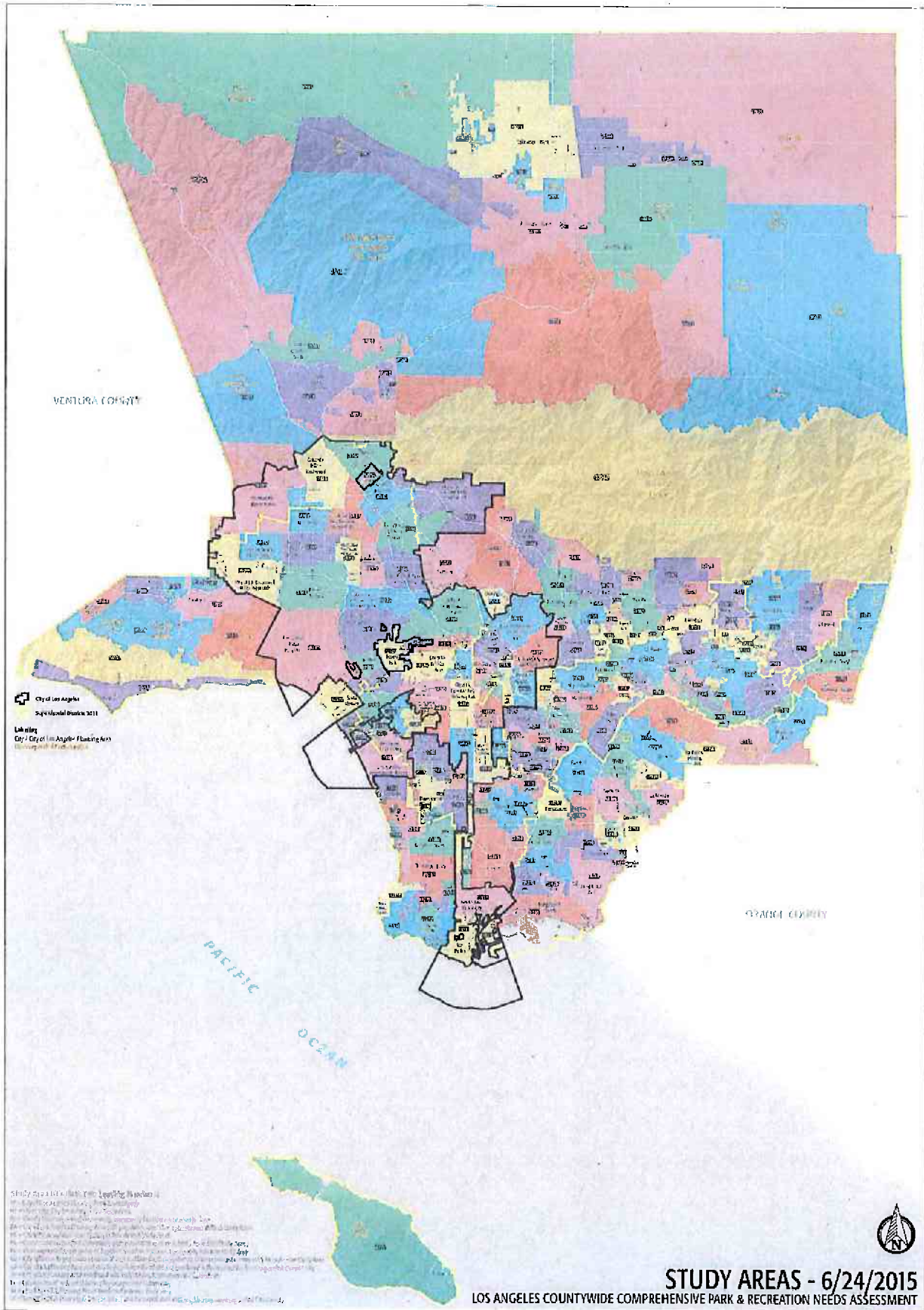
Attachments: Attachment A: Countywide Planning Areas
Attachment B: Long Beach Planning Areas and Council Districts
Attachment C: City List of Projects
Attachment D: Community Prioritized Projects

APPROVED:

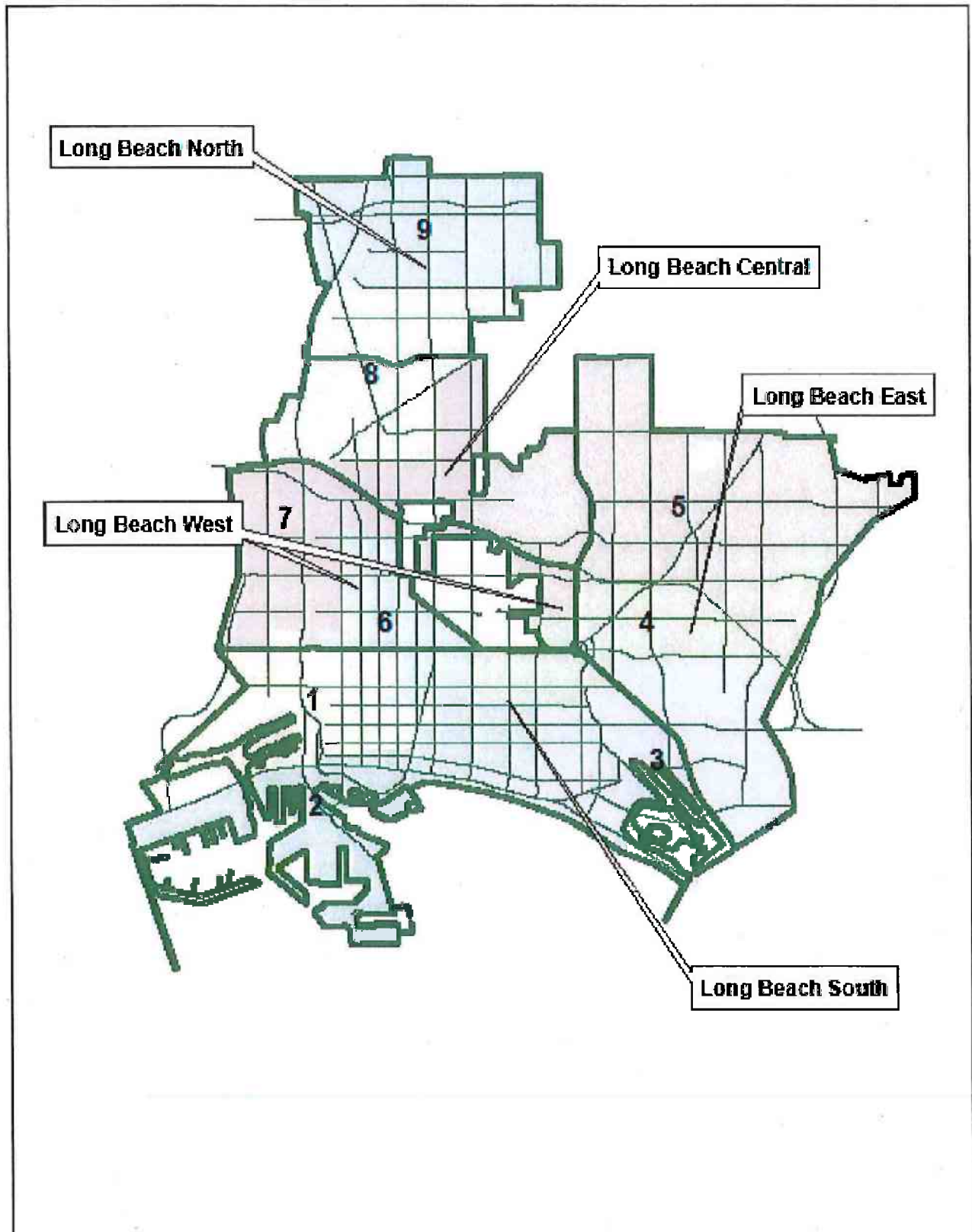


PATRICK H. WEST
CITY MANAGER

Attachment A. Countywide Planning Areas




Attachment B. Long Beach Planning Areas and Council Districts

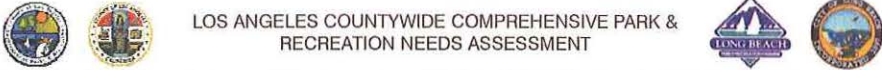


we all need
PARKS
for healthy, thriving and engaged communities

City of Long Beach West
January 6, 2016



LOS ANGELES COUNTYWIDE COMPREHENSIVE PARK & RECREATION NEEDS ASSESSMENT



Potential Park Projects



SILVERADO PARK

- Silverado Baseball Fields
Refurbish baseball fields (Repair Existing)
- Silverado Indoor Sports Courts
Roof repair of indoor sports courts. (Repair Existing)
- Silverado Kitchen Upgrade
Refurbish kitchen in community center. (Repair Existing)
- Silverado Skate Park
Refurbish existing skate park. (Repair Existing)

Los Angeles Countywide Comprehensive Park & Recreation Needs Assessment

Potential Park Projects



SILVERADO PARK

Silverado Pool Door Replacement
 Replace the doors to the pool at Silverado Park.
 (Repair Existing)

Silverado Game Court Lighting
 Replace lighting of outdoor game courts. (Add or Replace)

Silverado Playground
 New playground to replace existing. (Add or Replace)

Silverado Restroom
 Replace freestanding restroom. (Add or Replace)

Los Angeles Countywide Comprehensive Park & Recreation Needs Assessment

Potential Park Projects



VETERANS MEMORIAL PARK

Veterans Park Playground
 New playground to replace existing. (Add or Replace)

Veterans Park Tennis
 Rehabilitate existing tennis court. (Repair Existing)

Veterans Park Playing Fields
 Rehabilitate turf areas at Veterans Park. (Repair Existing)

Los Angeles Countywide Comprehensive Park & Recreation Needs Assessment

Potential Park Projects



HUDSON PARK

Hudson Park Soccer Field
Repair existing soccer field. (Repair Existing)

Los Angeles Countywide Comprehensive Park & Recreation Needs Assessment

Potential Park Projects



NAACP FREEDOM PARK

NAACP Park Irrigation
Repair irrigation system. (Repair Existing)

Los Angeles Countywide Comprehensive Park & Recreation Needs Assessment

Potential Park Projects



MARTIN LUTHER KING JR. PARK

MLK Pool
Replace existing swimming pool.
(Add or Replace)

Los Angeles Countywide Comprehensive Park & Recreation Needs Assessment

Potential Park Projects



FELLOWSHIP PARK

Fellowship Park Playground
Replace existing playground with new playground.
(Add or Replace)

Los Angeles Countywide Comprehensive Park & Recreation Needs Assessment

Potential Park Projects



CHITTICK PARK

Chittick Field Lighting
 Add field lighting to Chittick Field.
 (Add or Replace)

Los Angeles Countywide Comprehensive Park & Recreation Needs Assessment

Potential Park Projects



SANTA FE

New Parks

Santa Fe/47 Park
 Between Santa Fe Ave & 47 Freeway
 Land acquisition and development of new park
 (Build New Park or Special Facility)

Santa Fe/710 Park
 Between Santa Fe Ave & 710 Freeway
 Land acquisition and development of new park
 (Build New Park or Special Facility)

ATLANTIC /710


New Park

Atlantic/710 Park
 Between Atlantic Ave & 710 Freeway
 Land acquisition and development of new park
 (Build New Park or Special Facility)

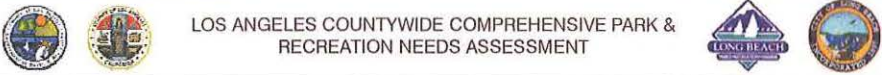
Los Angeles Countywide Comprehensive Park & Recreation Needs Assessment

we all need
PARKS
for healthy, thriving and engaged communities

City of Long Beach Central
January 11, 2016




LOS ANGELES COUNTYWIDE COMPREHENSIVE PARK & RECREATION NEEDS ASSESSMENT



Potential Park Projects

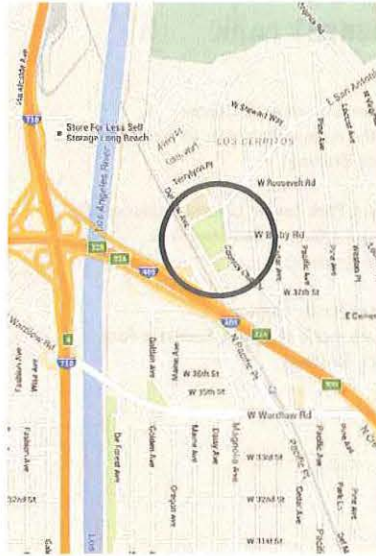
CHERRY PARK

Cherry Park baseball field
Repair baseball field at Cherry Park.
(Repair Existing)



Los Angeles Countywide Comprehensive Park & Recreation Needs Assessment

Potential Park Projects



LOS CERRITOS PARK

Los Cerritos Park Playground Replacement
New playground to replace existing one at Los Cerritos Park.
 (Add or Replace)

Los Cerritos Picnic Shelter
Repair the picnic shelter at Los Cerritos Park.
 (Repair Existing)

Los Angeles Countywide Comprehensive Park & Recreation Needs Assessment

Potential Park Projects



SCHERER PARK

Scherer Park Community Center Rehab
Rehabilitation the Community Center at Scherer Park, including roof replacement.
 (Repair Existing)

Scherer Park Gym
New Gymnasium at Scherer Park
 (New)

Scherer Park Lake
Repair the lake aeration system for Scherer Park Lake including replacing the pump.
 (Repair Existing)

Scherer Park Restroom/Storage Area Rehab
Rehabilitate the building housing the restroom and storage area at Scherer Park.
 (Repair Existing)

Los Angeles Countywide Comprehensive Park & Recreation Needs Assessment

Potential Park Projects



SOMERSET PARK

Somerset Community Center
Repair the community center at Somerset Park.
 (Replace Existing)

Somerset Park Sewer Lateral Replacement
New sewer lateral at Somerset Park.
 (Add or Replace)

Somerset Picnic Shelter
Repair the picnic shelter at Somerset Park.
 (Replace Existing)

Los Angeles Countywide Comprehensive Park & Recreation Needs Assessment

Potential Park Projects



NEW PARK

Long Beach Blvd / 710 Freeway
Land acquisition and development of new park between the 710 Freeway and Long Beach Blvd.
 (Build New Park or Special Facility)

Los Angeles Countywide Comprehensive Park & Recreation Needs Assessment

Potential Park Projects



MULTI-PURPOSE FIELDS

*New multipurpose fields at Los Cerritos and Scherer Parks.
(New)*



Los Angeles Countywide Comprehensive Park & Recreation Needs Assessment

we all need
PARKS
for healthy, thriving and engaged communities

City of Long Beach North
January 14, 2016



LOS ANGELES COUNTYWIDE COMPREHENSIVE PARK & RECREATION NEEDS ASSESSMENT



Potential Park Projects



COOLIDGE PARK

Coolidge Park Playground Replacement
 Replace the playground equipment at Coolidge Park
 (Add or Replace)

Coolidge Park Turf Repair
 Repair lawn and turf areas in Coolidge Park.
 (Repair Existing)

Los Angeles Countywide Comprehensive Park & Recreation Needs Assessment

Potential Park Projects



DAVENPORT PARK

Davenport Park Infrastructure
 Repair general infrastructure, including walkways, parking lot, lighting, irrigation, landscape, and park furniture.
 (Repair Existing)

Davenport Park Phase II
 Expand Davenport Park in the area between the park and Paramount Blvd.
 (New)

Davenport Park Picnic Shelter
 Repair picnic shelter at Davenport Park.
 (Repair Existing)

Los Angeles Countywide Comprehensive Park & Recreation Needs Assessment

Potential Park Projects



DeFOREST PARK

DeForest Park Community Center Painting
 Repair the community center at DeForest Park.
 (Repair Existing)

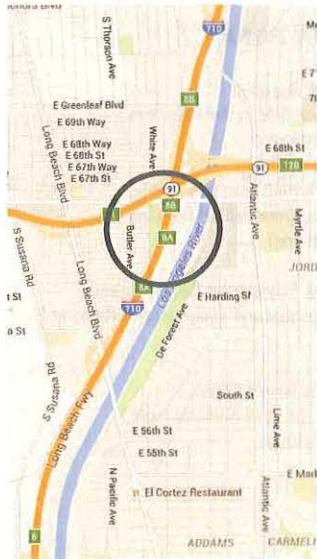
DeForest Park Dog Park
 New dog park at DeForest Park.
 (Add or Replace)

DeForest Park Lawn
 Replace the open lawn area at DeForest Park.
 (Add or Replace)

DeForest Park Multipurpose Fields
 Rehabilitate multipurpose fields at DeForest Park.
 (Repair Existing)

Los Angeles Countywide Comprehensive Park & Recreation Needs Assessment

Potential Park Projects



DeFOREST PARK

DeForest Park Playground Replacement
 Replace the playground equipment at DeForest Park.
 (Add or Replace)

DeForest Park Restroom Rehabilitation (2 restrooms)
 Rehabilitate the restrooms at DeForest Park.
 (Repair Existing)

DeForest Tennis Courts
 Repair tennis courts at DeForest Park.
 (Repair Existing)

Los Angeles Countywide Comprehensive Park & Recreation Needs Assessment

Potential Park Projects

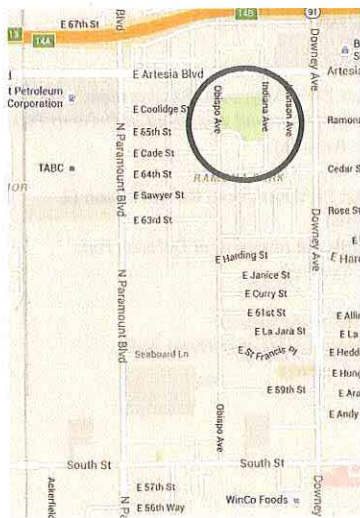


GRACE PARK

Grace Park Infrastructure
 Repair general infrastructure, including walkways,
 irrigation, landscape, and park furniture.
 (Repair and Replace)

Los Angeles Countywide Comprehensive Park & Recreation Needs Assessment

Potential Park Projects

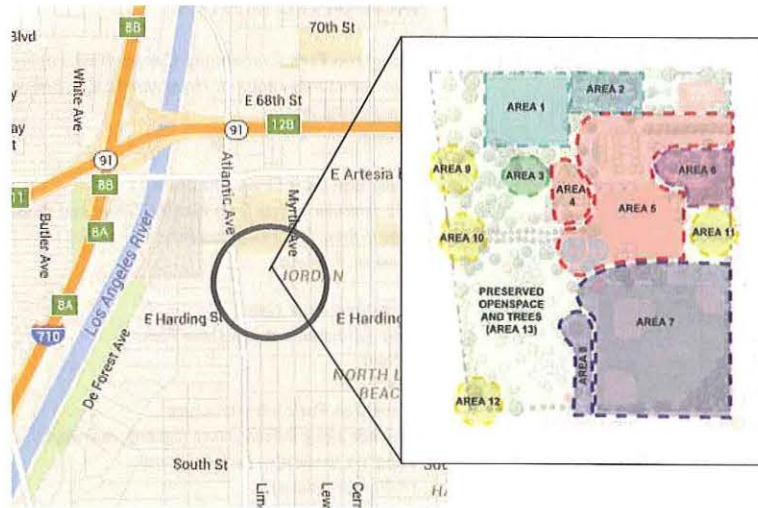


RAMONA PARK

- Ramona Park Baseball
 Repair baseball field at Ramona Park.
 (Replace Existing)
- Ramona Park Multipurpose Field
 Repair multipurpose field at Ramona Park.
 (Replace Existing)
- Ramona Park Playground Replacement
 Replace the playground equipment at Ramona Park.
 (New)
- Ramona Park Tennis Court
 Repair tennis court at Ramona Park.
 (Replace Existing)

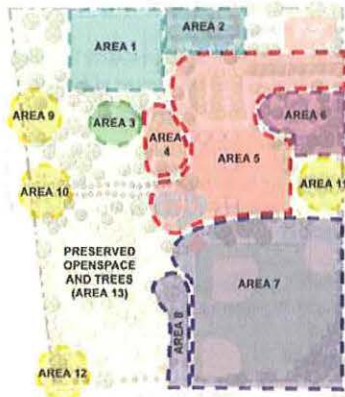
Los Angeles Countywide Comprehensive Park & Recreation Needs Assessment

Potential Park Projects



Los Angeles Countywide Comprehensive Park & Recreation Needs Assessment

Potential Park Projects



HOUGHTON PARK

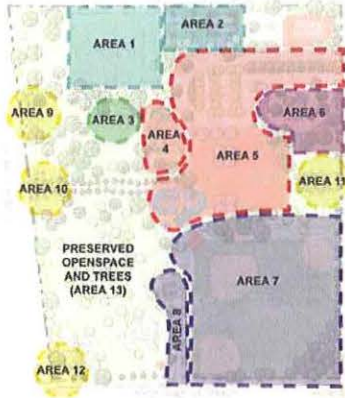
Houghton Park Basketball Court New
Add a new basketball court in Area 2 at Houghton Park.
(Add or Replace)

Houghton Park Basketball Court Rehab
Refurbish the existing basketball court in Area 2 at Houghton Park.
(Repair or Replace)

Houghton Park Civic Entrance
New civic entrance to Houghton Park in Area 10 including an electronic reader board, art, and landscape planting.
(Add or Replace)

Los Angeles Countywide Comprehensive Park & Recreation Needs Assessment

Potential Park Projects



HOUGHTON PARK

Houghton Park Community Center Replacement
 New community center at Houghton Park, including new parking lot.
 (New)

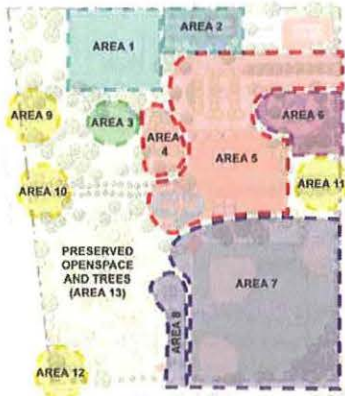
Houghton Park Drop-Off Zone
 Add vehicular access from Harding Street and drop-off area in Area 8 at Houghton Park.
 (Add or Replace)

Houghton Park Gym
 New gymnasium at Houghton Park.
 (New)

Houghton Park Infrastructure
 Upgrade aging infrastructure (lighting, walkways, irrigation, landscape, park furniture).
 (Add or Replace)

Los Angeles Countywide Comprehensive Park & Recreation Needs Assessment

Potential Park Projects



HOUGHTON PARK

Houghton Park Monument Signs
 Install new park monument signs on Atlantic Ave (Area 9), Myrtle Ave (Area 11), and the corner of Atlantic and Harding (Area 12) at Houghton Park.
 (Add or Replace)

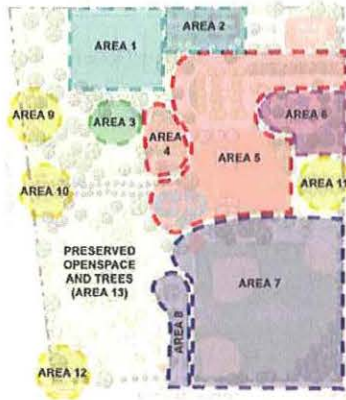
Houghton Park North Soccer Field
 Replace north soccer field in Area 1 at Houghton Park.
 (Add or Replace)

Houghton Park Open Space & Trees
 Replace turf and irrigation system in Area 13 at Houghton Park.
 (Add or Replace)

Houghton Park Outdoor Classroom
 New outdoor classroom in Area 4 at Houghton Park including seating, lighting, landscaping, and irrigation.
 (Add or Replace)

Los Angeles Countywide Comprehensive Park & Recreation Needs Assessment

Potential Park Projects

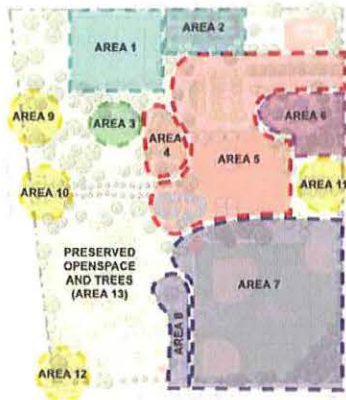


HOUGHTON PARK

- Houghton Park Picnic Area
New picnic area in Area 6 at Houghton Park.
(Add or Replace)
- Houghton Park Playground Replacement
New playground in Area 5 at Houghton Park.
(New)
- Houghton Park Restroom Rehabilitation
Refurbish the freestanding restroom at Houghton Park.
(Replace Existing)
- Houghton Park Shade Structures
Add shade structures at the Fitness Zone.
(Add or Replace)
- Houghton Park Security Cameras
Add security cameras to Houghton Park
(Add or Replace)

Los Angeles Countywide Comprehensive Park & Recreation Needs Assessment

Potential Park Projects



HOUGHTON PARK

- Houghton Park Sports Fields
Replace sports fields and associated infrastructure (concrete, lighting, landscaping, irrigation) in Area 7 at Houghton Park.
(Add or Replace)
- Houghton Park Tennis Courts
Refurbish the existing tennis courts in Area 2 at Houghton Park.
(Repair)

Los Angeles Countywide Comprehensive Park & Recreation Needs Assessment

Potential Park Projects



JACKSON PARK

Jackson Park Playground
Replace the playground equipment at Jackson Park.
(New)

Los Angeles Countywide Comprehensive Park & Recreation Needs Assessment

Potential Park Projects

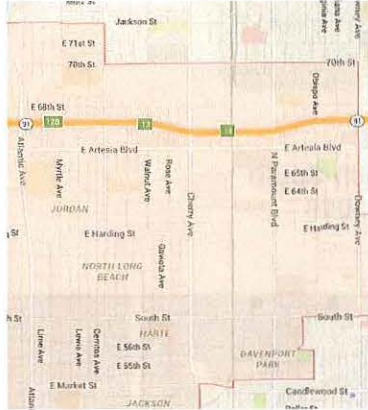


NEW PARK

North of 91 Park
Land acquisition and development of new park north of the 91 Freeway.
(Build New Park or Special Facility)

Los Angeles Countywide Comprehensive Park & Recreation Needs Assessment

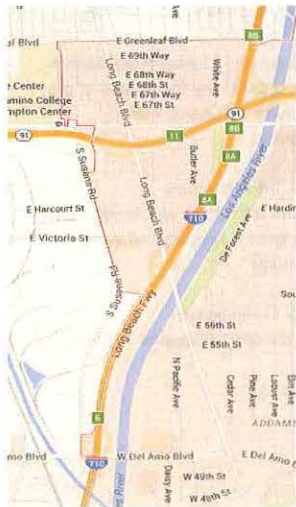
Potential Park Projects



NEW PARK


West of Downey Ave Park
Land acquisition and development of new park west of Downey Ave.
 (Build New Park or Special Facility)

Potential Park Projects


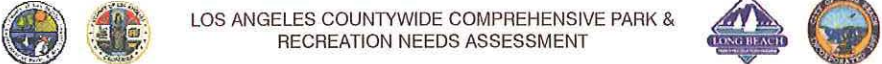


NEW PARK

West of Long Beach Blvd Park
Land acquisition and development of new park west of Long Beach Blvd.
 (Build New Park or Special Facility)




City of Long Beach South
January 21, 2016

LOS ANGELES COUNTYWIDE COMPREHENSIVE PARK & RECREATION NEEDS ASSESSMENT

Potential Park Projects



CESAR E. CHAVEZ PARK

Chavez Community Center Roof Repair
Repair the roof (including the beams) of the community center at Chavez Park.
(Repair Existing)

Chavez Park Infrastructure
Repair the infrastructure at Chavez Park including irrigation, lighting, and walkways.
(Repair Existing)

Chavez Park Open Space
Rehabilitate the open lawn area at Chavez Park.
(Repair Existing)

Map labels: Merriam Capital Corporation (ATM), W 5th St, W 6th St, W 7th St, W 8th St, W 9th St, W 10th St, W 11th St, W 12th St, W 13th St, W 14th St, W 15th St, W 16th St, W 17th St, W 18th St, W 19th St, W 20th St, W 21st St, W 22nd St, W 23rd St, W 24th St, W 25th St, W 26th St, W 27th St, W 28th St, W 29th St, W 30th St, W 31st St, W 32nd St, W 33rd St, W 34th St, W 35th St, W 36th St, W 37th St, W 38th St, W 39th St, W 40th St, W 41st St, W 42nd St, W 43rd St, W 44th St, W 45th St, W 46th St, W 47th St, W 48th St, W 49th St, W 50th St, W 51st St, W 52nd St, W 53rd St, W 54th St, W 55th St, W 56th St, W 57th St, W 58th St, W 59th St, W 60th St, W 61st St, W 62nd St, W 63rd St, W 64th St, W 65th St, W 66th St, W 67th St, W 68th St, W 69th St, W 70th St, W 71st St, W 72nd St, W 73rd St, W 74th St, W 75th St, W 76th St, W 77th St, W 78th St, W 79th St, W 80th St, W 81st St, W 82nd St, W 83rd St, W 84th St, W 85th St, W 86th St, W 87th St, W 88th St, W 89th St, W 90th St, W 91st St, W 92nd St, W 93rd St, W 94th St, W 95th St, W 96th St, W 97th St, W 98th St, W 99th St, W 100th St, W Broadway, W Etc.

Los Angeles Countywide Comprehensive Park & Recreation Needs Assessment

Potential Park Projects



CESAR E. CHAVEZ PARK

Chavez Park Painting
 Repaint the community center & freestanding restroom at Chavez Park.
 (Repair Existing)

Chavez Park Playgrounds
 Replace the playgrounds at Chavez Park.
 (Add or Replace)

Los Angeles Countywide Comprehensive Park & Recreation Needs Assessment

Potential Park Projects



DRAKE PARK

Drake Park Basketball Court
 Repair the basketball court at Drake Park.
 (Repair Existing)

Drake Park Community Center Rehabilitation
 Rehabilitate the community center at Drake Park.
 (Repair Existing)

Drake Park Infrastructure
 Replace the infrastructure at Drake Park including irrigation, lighting, and walkways.
 (Add or Replace)

Los Angeles Countywide Comprehensive Park & Recreation Needs Assessment

Potential Park Projects



DRAKE PARK

Drake Park Lawn
Rehabilitate the open lawn area at Drake Park.
 (Repair Existing)

Drake Park New Freestanding Restroom
New freestanding restroom at Drake Park.
 (Add or Replace)

Drake Park Playground
New playground at Drake Park.
 (Add or Replace)

Los Angeles Countywide Comprehensive Park & Recreation Needs Assessment

Potential Park Projects



DRAKE PARK

Drake Park Skate Park
New skate park at Drake Park.
 (Add or Replace)

Drake Park Soccer Field
Rehabilitate the soccer field at Drake Park.
 (Repair Existing)

Drake Park Tennis Courts
Repair the tennis courts at Drake Park.
 (Repair Existing)

Drake/Chavez Greenbelt
Acquire the remaining land and develop the greenbelt between Drake Park and Chavez Park.
 (Add or Replace)

Los Angeles Countywide Comprehensive Park & Recreation Needs Assessment

Potential Park Projects

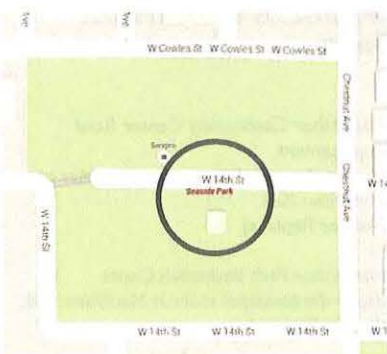


DOUGLAS MacARTHUR PARK

MacArthur Park Lawn
Replace the open lawn area at MacArthur Park.
(Add or Replace)

MacArthur Park Restroom Replacement
Replace the freestanding restroom at MacArthur Park.
(Add or Replace)

Potential Park Projects



SEASIDE PARK

Seaside Park Infrastructure
Repair the infrastructure at Seaside Park including irrigation, lighting, and walkways.
(Repair Existing)

Seaside Park Lawn
Replace the open lawn area at Seaside Park.
(Add or Replace)

Seaside Park Picnic Shelter
Replace the picnic shelter at Seaside Park.
(Add or Replace)

Seaside Park Playground
Repair the playground at Seaside Park.
(Repair Existing)

Potential Park Projects



ROTARY CENTANIAL PARK

Rotary Park Infrastructure
 Repair the infrastructure at Rotary Park including irrigation, lighting, and walkways.
 (Repair Existing)

Rotary Park Lawn
 Rehabilitate the open lawn area at Rotary Park.
 (Repair Existing)

Rotary Park Picnic Shelter
 Repair the picnic shelter at Rotary Park.
 (Repair Existing)

Rotary Park Playground
 Repair the playground at Rotary Park.
 (Repair Existing)

Los Angeles Countywide Comprehensive Park & Recreation Needs Assessment

Potential Park Projects



MARINA VISTA PARK

Marina Vista Ball Field Rehabilitation
 Rehabilitate the ball fields at Marina Vista Park.
 (Repair Existing)

Marina Vista Irrigation Rehabilitation
 Rehabilitate the irrigation system at Marina Vista Park.
 (Repair Existing)

Marina Vista Park Lawn
 Rehabilitate the open lawn area at Marina Vista Park.
 (Repair Existing)

Los Angeles Countywide Comprehensive Park & Recreation Needs Assessment

Potential Park Projects



LIVINGSTON PARK

Livingston Park Playground
Repair the playground at Livingston Park.
(Repair Existing)

Los Angeles Countywide Comprehensive Park & Recreation Needs Assessment

Potential Park Projects

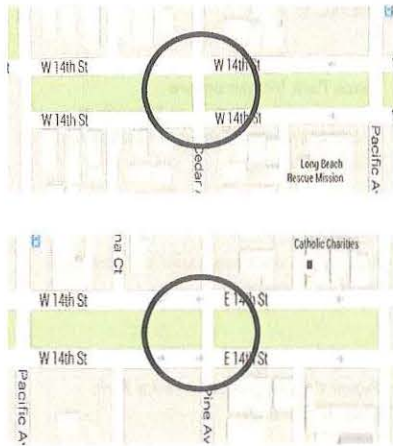


LOMA VISTA PARK

Loma Vista Park Lawn
Rehabilitate the open lawn area at Loma Vista Park.
(Repair Existing)

Los Angeles Countywide Comprehensive Park & Recreation Needs Assessment

Potential Park Projects



14TH STREET PARK

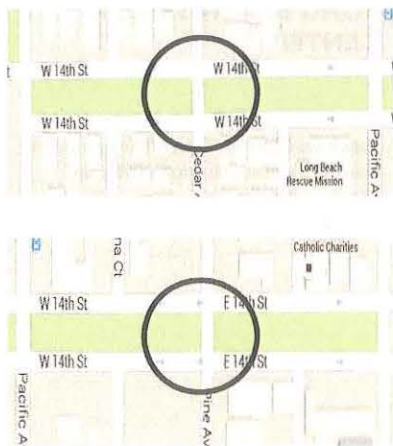
14th Street Basketball Courts
 Rehabilitate the basketball courts at 14th Street Park.
 (Repair Existing)

14th Street Park Expansion
 Expand 14th Street Park to Long Beach Blvd.
 (New)

14th Street Park Infrastructure
 Replace the infrastructure at 14th Street Park including irrigation, lighting, and walkways.
 (Add or Replace)

Los Angeles Countywide Comprehensive Park & Recreation Needs Assessment

Potential Park Projects



14TH STREET PARK

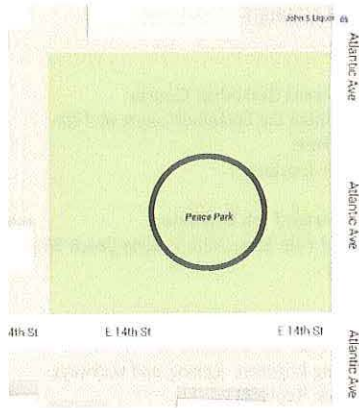
14th Street Park Lawn
 Rehabilitate the open lawn area at 14th Street Park.
 (Repair Existing)

14th Street Skate Park
 Repair Michael K. Green Skate Park at 14th Street Park.
 (Repair Existing)

14th Street Park Playground
 Replace the playground at 14th Street Park.
 (Add or Replace)

Los Angeles Countywide Comprehensive Park & Recreation Needs Assessment

Potential Park Projects



PEACE PARK

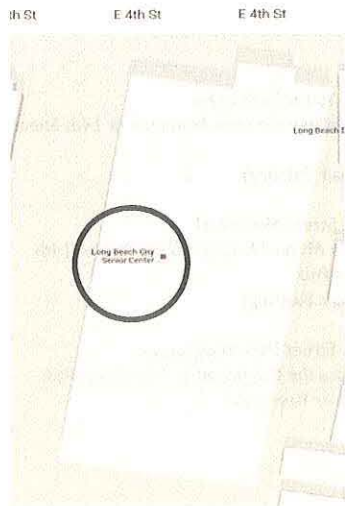
Peace Park Infrastructure
 Repair the infrastructure at Peace Park including irrigation, lighting, and walkways. (Repair Existing)

Peace Park Lawn
 Replace the open lawn area at Peace Park. (Add or Replace)

Peace Park Playground
 Repair the playground at Peace Park. (Repair Existing)

Los Angeles Countywide Comprehensive Park & Recreation Needs Assessment

Potential Park Projects

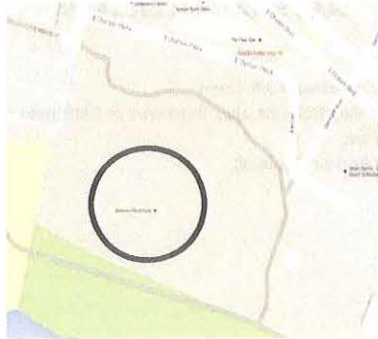


LONG BEACH SENIOR CENTER

4th Street Senior Center Repairs
 Repair the LB Senior Center building including painting, plumbing, electrical, HVAC, roof, kitchen, and restrooms. (Repair Existing)

Los Angeles Countywide Comprehensive Park & Recreation Needs Assessment

Potential Park Projects



BELMONT POOL

Belmont Pool
New aquatic complex to replace demolished Belmont Pool.
(New)

Los Angeles Countywide Comprehensive Park & Recreation Needs Assessment

Potential Park Projects

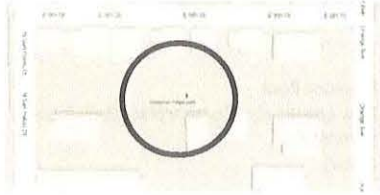


BIXBY PARK

Bixby Park Skate Park Expansion
Expand the skate park (including adjacent landscaping) at Bixby Park in accordance with the Master Plan.
(Add or Replace)

Los Angeles Countywide Comprehensive Park & Recreation Needs Assessment

Potential Park Projects

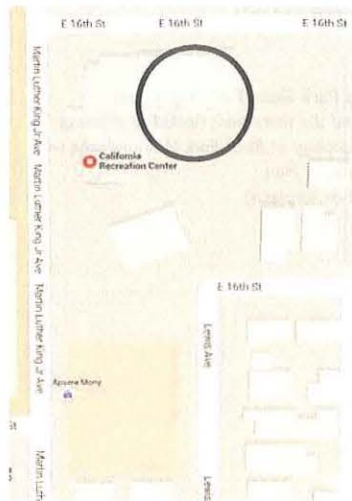


CRAFTSMAN VILLAGE PARK

Craftsman Park Lawn
Rehabilitate the open lawn area at Craftsman Park.
(Add or Replace)

Los Angeles Countywide Comprehensive Park & Recreation Needs Assessment

Potential Park Projects



McBRIDE PARK

McBride Community Center Rehabilitation
Rehabilitate the older community center (Cal Rec) at McBride Park.
(Add or Replace)

Los Angeles Countywide Comprehensive Park & Recreation Needs Assessment

Potential Park Projects



ORIZABA PARK

Orizaba Park Picnic Shelters
*Repair the picnic shelters at Orizaba Park.
(Repair or Replace)*

Los Angeles Countywide Comprehensive Park & Recreation Needs Assessment

Potential Park Projects



PLAZA ZAFARIA

Plaza Zafaria Lawn
*Rehabilitate the open lawn area at Plaza Zafaria.
(Repair Existing)*

Los Angeles Countywide Comprehensive Park & Recreation Needs Assessment

Potential Park Projects



RECREATION PARK

Recreation Park Bandshell Painting
Repaint the historic bandshell at Recreation Park.
(Repair Existing)

Los Angeles Countywide Comprehensive Park & Recreation Needs Assessment

Potential Park Projects



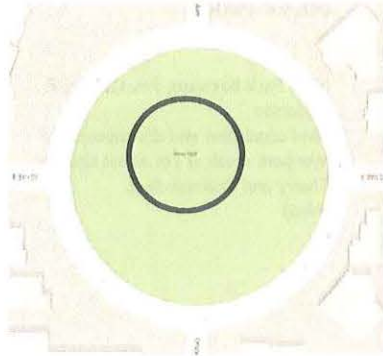
ROSA PARKS PARK

Rosa Parks Park Infrastructure
Repair the infrastructure at Rosa Parks Park including irrigation, lighting, and walkways.
(Repair Existing)

Rosa Parks Park Lawn
Replace the open lawn area at Rosa Parks Park.
(Add or Replace)

Los Angeles Countywide Comprehensive Park & Recreation Needs Assessment

Potential Park Projects



ROSE PARK

Rose Park Infrastructure
Repair the infrastructure at Rose Park including irrigation, lighting, and walkways.
(Repair Existing)

Los Angeles Countywide Comprehensive Park & Recreation Needs Assessment

Potential Park Projects



NEW PARK

Shoemaker Bridge Park
New park on Shoemaker Bridge following 710 Freeway realignment.
(New)

Los Angeles Countywide Comprehensive Park & Recreation Needs Assessment

Potential Park Projects

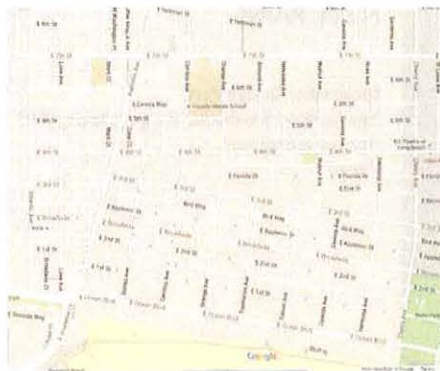


NEW PARK

New Park between 7th, Cherry, & Redondo
Land acquisition and development of new park north of 7th Street between Cherry and Redondo Aves.
(New)

Los Angeles Countywide Comprehensive Park & Recreation Needs Assessment

Potential Park Projects



NEW PARK

New Park between Ocean, Atlantic, & Cherry
Land acquisition and development of new park north of Ocean Blvd. between Atlantic and Cherry Aves.
(New)

Los Angeles Countywide Comprehensive Park & Recreation Needs Assessment

Potential Park Projects



NEW PARK

New Park West of Pacific Ave
*Land acquisition and development of
new park west of Pacific Ave.
(New)*

Los Angeles Countywide Comprehensive Park & Recreation Needs Assessment

we all need
PARKS
for healthy, thriving and engaged communities

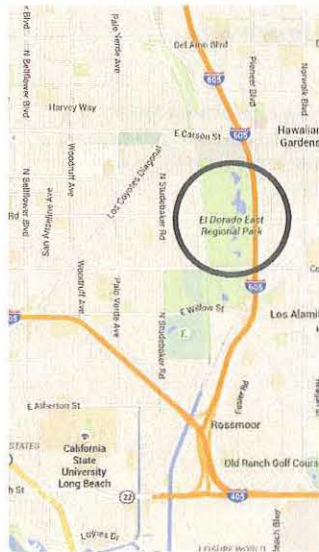
City of Long Beach East
January 25, 2016



LOS ANGELES COUNTYWIDE COMPREHENSIVE PARK &
RECREATION NEEDS ASSESSMENT



Potential Park Projects - Regional



EL DORADO REGIONAL PARK

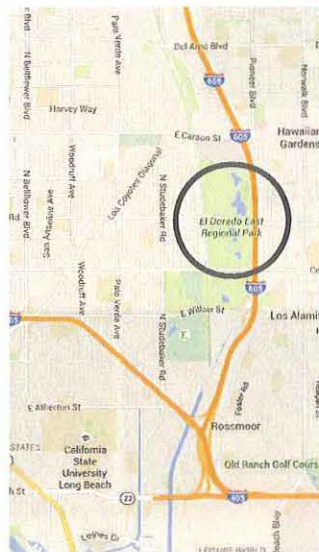
El Dorado Regional Park Infrastructure
Repair the infrastructure at El Dorado Regional Park including irrigation, lighting, and walkways.
 (Repair Existing)

El Dorado Regional Park Picnic Shelters
Repair the picnic shelters in El Dorado Regional Park.
 (Repair Existing)

El Dorado Regional Park Turf
Rehabilitate the open turf area in El Dorado Regional Park.
 (Repair Existing)

Los Angeles Countywide Comprehensive Park & Recreation Needs Assessment

Potential Park Projects - Regional



EL DORADO REGIONAL PARK

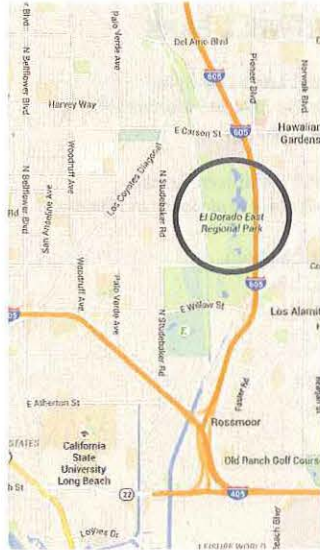
El Dorado Regional Park Campground Rehab
Rehabilitate the campground in El Dorado Regional Park.
 (Repair Existing)

El Dorado Regional Park Lake Dredging
Dredge the 4 lakes in El Dorado Regional Park.
 (Repair Existing)

El Dorado Regional Park Lake Edge Repair
Repair the concrete edges around the lakes in El Dorado Regional Park.
 (Repair Existing)

Los Angeles Countywide Comprehensive Park & Recreation Needs Assessment

Potential Park Projects - Regional



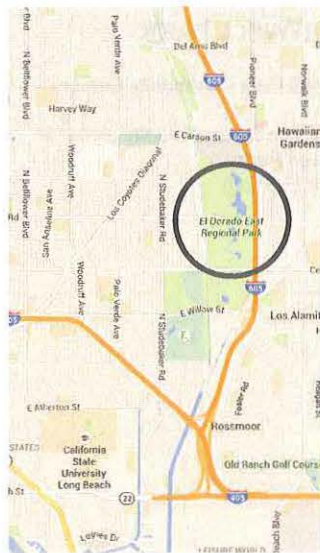
EL DORADO REGIONAL PARK

El Dorado Regional Park Old Ranger Station
Rehabilitate the old Ranger Station in El Dorado Regional Park and convert to new use.
 (Repair Existing)

El Dorado Regional Park Playground
Replace the playground at the campground in El Dorado Regional Park.
 (Add or Replace)

Los Angeles Countywide Comprehensive Park & Recreation Needs Assessment

Potential Park Projects - Regional



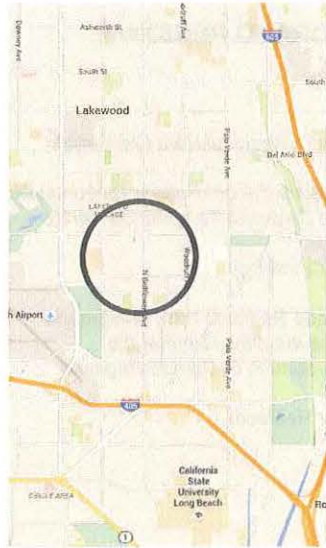
EL DORADO REGIONAL PARK

El Dorado Regional Park Restroom Replacement
Replace 7 restrooms in El Dorado Regional Park with new restrooms.
 (Add or Replace)

El Dorado Regional Park Roads & Parking
Repair the roads and parking lots in El Dorado Regional Park.
 (Repair Existing)

Los Angeles Countywide Comprehensive Park & Recreation Needs Assessment

Potential Park Projects - Regional



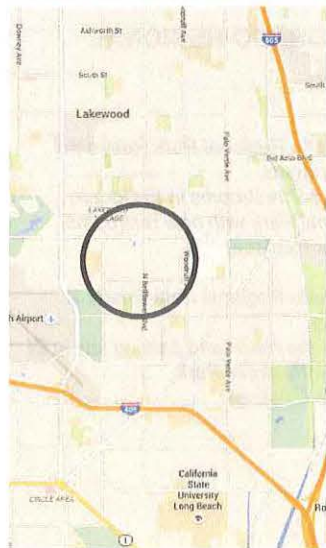
HEARTWELL PARK

Heartwell Lake Dredging
Dredge the lake in Heartwell Park.
(Repair Existing)

Heartwell Restroom Rehab
Rehabilitate 4 restrooms in Heartwell Park.
(Repair Existing)

Los Angeles Countywide Comprehensive Park & Recreation Needs Assessment

Potential Park Projects

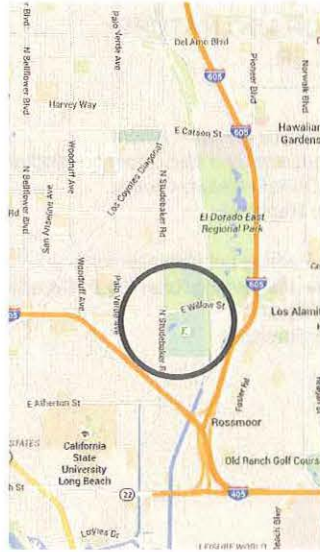


HEARTWELL PARK

Heartwell Park Community Center
Rehab
Rehabilitate the community center at Heartwell Park.
(Repair Existing)

Los Angeles Countywide Comprehensive Park & Recreation Needs Assessment

Potential Park Projects



EL DORADO PARK WEST

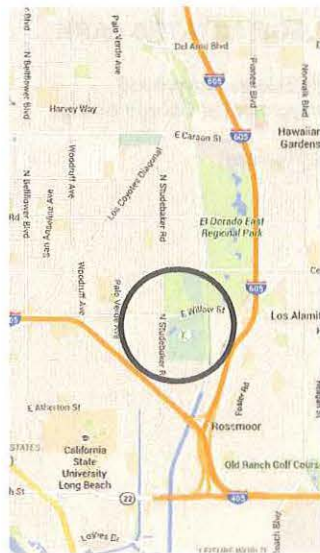
El Dorado Park West Infrastructure
Repair the infrastructure at El Dorado Park West including irrigation, lighting, and walkways.
 (Repair Existing)

El Dorado Park West Turf
Rehabilitate the open turf area in El Dorado Park West.
 (Repair Existing)

El Dorado Park West
 Community/Senior Center Rehab
Roof repair & HVAC replacement at the Community/Senior Center in El Dorado Park West.
 (Repair Existing)

Los Angeles Countywide Comprehensive Park & Recreation Needs Assessment

Potential Park Projects



EL DORADO PARK WEST

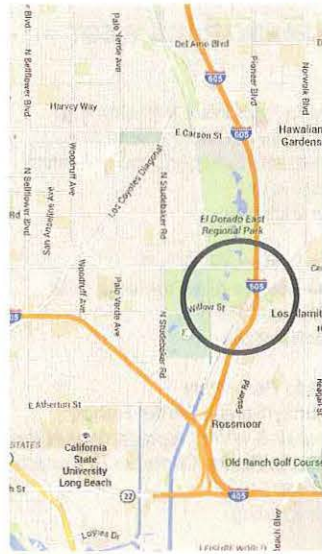
El Dorado Park West Duck Pond
 Playground
Repair the playground near the Duck Pond in El Dorado Park West.
 (Repair Existing)

El Dorado Park West Duck Pond
 Rehab
Rehabilitate the Duck Pond in El Dorado Park West.
 (Repair Existing)

El Dorado Park West Duck Pond
 Restroom
Repair the restroom near the Duck Pond in El Dorado Park West.
 (Repair Existing)

Los Angeles Countywide Comprehensive Park & Recreation Needs Assessment

Potential Park Projects



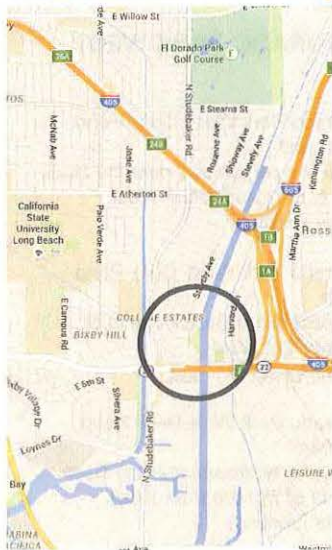
EL DORADO NATURE CENTER

EDNC Building Replacement
New museum and classroom building at the El Dorado Nature Center.
 (Add or Replace)

EDNC Parking Lot Replacement
Replace the parking lot at the El Dorado Nature Center.
 (Add or Replace)

Los Angeles Countywide Comprehensive Park & Recreation Needs Assessment

Potential Park Projects

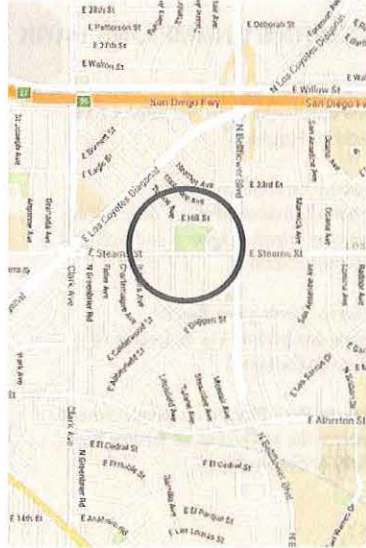


COLLEGE ESTATES PARK

College Estates Playground
New playground at College Estates Park.
 (Add or Replace)

Los Angeles Countywide Comprehensive Park & Recreation Needs Assessment

Potential Park Projects



LOS ALTOS PARK

Los Altos Park Playground Surfacing Repairs
 Repair the safety surfacing in the playground at Los Altos Park.
 (Repair Existing)

Potential Park Projects



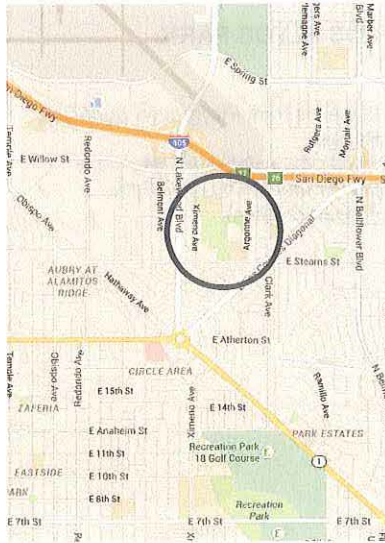
PAN AMERICAN PARK

Pan American Park Basketball Rehab
 Rehabilitate the basketball court at Pan American Park.
 (Repair Existing)

Pan American Park Gym
 Rehabilitate the gymnasium (including the restroom) at Pan American Park.
 (Repair Existing)

Rehab Pan American Park Roof Repair
 Roof repair of the gym and Community Center at Pan American Park.
 (Repair Existing)

Potential Park Projects



STEARNS CHAMPIONS PARK

Stearns Community Center Replacement
New community center at Stearns Park.
 (Add or Replace)

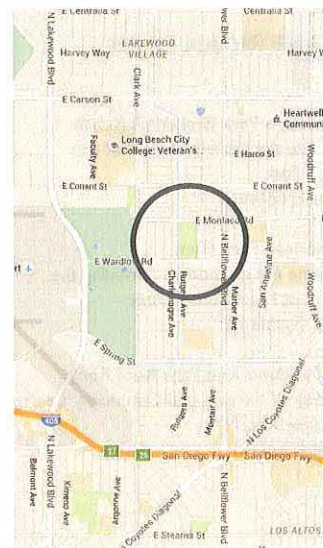
Stearns Park Infrastructure
Repair the infrastructure at Stearns Park including irrigation, lighting, and walkways.
 (Repair Existing)

Stearns Parking Lot Repair
Repair the parking lots at Stearns Park.
 (Repair Existing)

Stearns Park Playground Replacement
Replace the playground at Stearns Park.
 (Add or Replace)

Los Angeles Countywide Comprehensive Park & Recreation Needs Assessment

Potential Park Projects



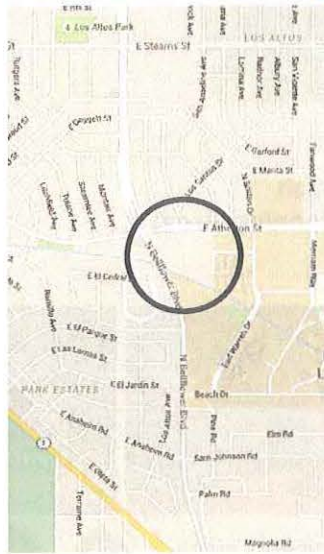
WARDLOW PARK

Wardlow Community Center Roof Replacement
New roof for the community center at Wardlow Park.
 (Repair Existing)

Wardlow Park Multipurpose Fields Rehab
Rehabilitate the multipurpose fields at Wardlow Park.
 (Repair Existing)

Los Angeles Countywide Comprehensive Park & Recreation Needs Assessment

Potential Park Projects



WHALEY PARK

Whaley Park Community Center
New community center at Whaley Park.
 (Add or Replace)

Whaley Park HVAC
Repair the heating, ventilation, and air conditioning system at Whaley Park Community Center.
 (Repair Existing)

Whaley Park Kitchen Upgrade
Repair the Whaley Park Community Center kitchen.
 (Repair Existing)

Whaley Park Playground Replacement
Replace the playground at Whaley Park.
 (Add or Replace)

Los Angeles Countywide Comprehensive Park & Recreation Needs Assessment

Potential Park Projects


SPLASH PAD REPLACEMENT

Stearns Champions Park, Heartwell Park, & Wardlow Park
Replace non-working splash pads with appropriate new amenities.
 (Add or Replace)

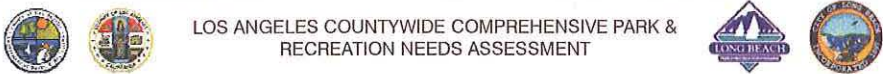
Los Angeles Countywide Comprehensive Park & Recreation Needs Assessment

we all need
PARKS
for healthy, thriving and engaged communities

**City of Long Beach
Citywide Projects (Any Planning Area)**



LOS ANGELES COUNTYWIDE COMPREHENSIVE PARK & RECREATION NEEDS ASSESSMENT



Potential Park Projects



NEW SWIMMING POOL

Build a new swimming pool at a park in the Planning Area.
(Add or Replace)



Potential Park Projects



SENIOR CENTER

Land acquisition and development of new senior center.
(Build New Park or Special Facility)



Los Angeles Countywide Comprehensive Park & Recreation Needs Assessment

Potential Park Projects



DOG PARKS

New Dog Parks
Add dog parks at one or more existing parks.
(Add or Replace)



New Dog Parks
Land acquisition and development of one or more new dog parks.
(Build New Park or Special Facility)

Los Angeles Countywide Comprehensive Park & Recreation Needs Assessment

Potential Park Projects

CITYWIDE PROJECTS

Citywide Park Fencing
Repair fencing at parks Citywide.
 (Repair Existing)

Citywide Irrigation Upgrades
Upgrade irrigation systems and controllers to better manage water use through centralized control.
 (Repair Existing)

Citywide Park Lighting Upgrades
Upgrade lighting at parks Citywide for increased visibility and reduced electricity use.
 (Repair Existing)

Park Restrooms
Repair existing park restrooms.
 (Repair Existing)

Citywide Park Plumbing
Repair plumbing at parks Citywide. This does not include irrigation systems or restroom rehabilitation.
 (Repair Existing)

Citywide Park Roof Repair
Repair roofs of park buildings Citywide.
 (Repair Existing)

Citywide Park Tree Trimming
Trim trees at parks Citywide.
 (Repair Existing)

Citywide Drinking Fountains
Replace drinking fountains at parks Citywide. Install hydration stations where feasible.
 (Add or Replace)

Attachment D: Community Prioritized Projects

Planning Areas

Long Beach North

91 Freeway Green Belt: Provide a new walking path/green belt next to the 91 Freeway including benches and solar lighting. This counts as 3 projects.
DeForest Park ADA Accessibility: Extend accessibility farther into the park facilities at DeForest Park.
Davenport Park Phase II: Expand Davenport Park so that it extends to Paramount Blvd. This counts as 3 projects.
Dog Park Lighting: Add lighting at dog parks Citywide to extend usable hours into the evenings.
Houghton Park Community Center Replacement: New community center at Houghton Park, including a new parking lot.
Houghton Park Infrastructure: Upgrade the aging infrastructure (lighting, walkways, irrigation, landscape, park furniture) throughout Houghton Park.

Long Beach West *

Admiral Kidd Skate Park: New skate park in Admiral Kidd Park.
Hudson Park Baseball Diamonds: 2 new baseball fields with lighting and security cameras.
Oil Operators Site Park: New park on the site known as the "Oil Operators Property." This counts as 3 projects.
Park Lighting Upgrades: Upgrade lighting at parks throughout the Planning Area for increased visibility and reduced electricity use.
Park Restroom Repairs: Repair existing park restrooms throughout the Planning Area.
Terminal Island Freeway Replacement: New park on the site of the Terminal Island Freeway. This counts as 3 projects.

Community prioritized projects listed in alphabetical order. Projects included on lists from the five Long Beach community outreach workshops reflect the community's priorities and do not necessarily coincide in all cases with citywide priority projects.

Long Beach South *

Belmont Pool: New aquatic complex to replace demolished Belmont Pool.
Chavez Park Infrastructure: Repair the infrastructure at Chavez Park including irrigation, lighting, and walkways.
Drake Park Community Center Rehabilitation: Rehabilitate the community center at Drake Park.
Drake/Chavez Greenbelt: Acquire the remaining land and develop the greenbelt between Drake Park and Chavez Park. This counts as 3 projects.
Park Lighting Upgrades: Upgrade lighting at parks throughout the Planning Area for increased visibility and reduced electricity use.
Park Restroom Repairs: Repair existing park restrooms throughout the Planning Area.
Promenade Park: New playground in Promenade Park.
Senior Center Enhancements: Remodel the Long Beach Senior Center into a state-of-the-art facility utilizing universal design and technological solutions to issues of access and communications; and providing recreational, educational, and social services resources.

Long Beach East

Athletic Fields for Soccer and Lacrosse: Acquire new park land at a to-be-determined location within the Planning Area for construction of athletic fields for open field sports such as soccer and lacrosse. This counts as 3 projects.
College Estates Park Playground: New playground at College Estates Park.
El Dorado Park West Duck Pond Rehab: Rehabilitate the Duck Pond in El Dorado Park West.
New Swimming Pool: Build a new swimming pool in a to-be-determined park in the Planning Area.
Picnic Shelters: Upgrade picnic shelters in parks throughout the Planning Area.
Stearns Park Trash Facilities: Replace and reposition trash receptacles in Stearns Park to accommodate current usage of the park facilities.
Walking/Jogging Trails: Add trails in parks composed of materials that are appropriate for walking and jogging (not concrete).
Whaley Park HVAC: Repair the heating, ventilation, and air conditioning system at Whaley Park Community Center.

Community prioritized projects listed in alphabetical order. Projects included on lists from the five Long Beach community outreach workshops reflect the community's priorities and do not necessarily coincide in all cases with citywide priority projects.

Long Beach Central

Cherry Park Concession & Maintenance Facility: New concession and maintenance facility in Cherry Park including a restroom and kitchen.
Cherry Park Baseball: Repair the baseball field at Cherry Park.
Scherer Park New Baseball Field: New baseball field for youth baseball/softball at Scherer Park including fencing, dugouts, and lights.
Equestrian Central Control: Add features such as signage to a to-be-determined park in the Planning Area to create an equestrian friendly park.
New Skate Parks: Add skate parks in Bixby Knolls Park, Cherry Park, and Los Cerritos Park.
Scherer Park Lake: Repair the lake aeration system for Scherer Park Lake including replacing the pump.
Dog Waste Stations: Add dog waste bag dispensers and trash receptacles at parks throughout the Planning Area.
Scherer Park Community Center Rehab: Rehabilitate the Community Center at Scherer Park, including replacing the roof.
Scherer Park Restroom/Storage Area Rehab: Rehabilitate the building housing the restroom and storage area at Scherer Park.
Security Call Boxes: Add security call boxes throughout parks in the Planning Area, including along trails and in parking areas.

Regional Parks

El Dorado Regional Park

Horseshoe Lake Bridge: Construct a bridge over the stream that connects the two lakes in Area 2 of El Dorado Regional Park to eliminate water flowing over the roadway.
Lake Edge Repair: Repair the concrete edges around the lakes in El Dorado Regional Park.
Lake Dredging: Dredge the lakes in El Dorado Regional Park for improved water quality and better storm water retention.
Park Restrooms: Replace 7 restrooms in El Dorado Regional Park with new restrooms.
Picnic Shelters: Repair the picnic shelters in El Dorado Regional Park.

Community prioritized projects listed in alphabetical order. Projects included on lists from the five Long Beach community outreach workshops reflect the community's priorities and do not necessarily coincide in all cases with citywide priority projects.

Heartwell Park

Heartwell Park Community Center Rehab: Rehabilitate the community center at Heartwell Park.

Nature Centers

El Dorado Nature Center

EDNC Building Replacement: Replace the building that houses the museum, classrooms, gift shop, restrooms, and staff offices at the El Dorado Nature Center.

EDNC Parking Lot Replacement: Replace the parking lot at the El Dorado Nature Center with a new parking lot designed using Low Impact Design principles and utilizing passive treatment techniques to eliminate runoff to the storm drain and cleanse runoff entering the Nature Center lakes.
--

EDNC Restroom Replacement: Replace the freestanding restroom on the 2-mile trail at the El Dorado Nature Center.
--

* Lists for the Long Beach West and Long Beach South Planning Areas include projects prioritized in the Spanish-language workshop.

Community prioritized projects listed in alphabetical order. Projects included on lists from the five Long Beach community outreach workshops reflect the community's priorities and do not necessarily coincide in all cases with citywide priority projects.