



CITY OF LONG BEACH

R-33

DEPARTMENT OF PUBLIC WORKS

333 West Ocean Boulevard • Long Beach, CA 90802 • (562) 570-6383 • FAX (562) 570-6012

March 13, 2007

HONORABLE MAYOR AND CITY COUNCIL
City of Long Beach
California

RECOMMENDATION:

Receive and file the attached Airport activities report. (District 5)

DISCUSSION

Included is the Monthly Airport Activity Report for January 2007.

Airport Passenger, General Aviation (GA) and Cargo Activity - The Monthly Airport Activity Report provides monthly and year-to-date statistics for airline passengers (total and enplaned), aircraft operations by user category, and cargo carrier tonnage. Total passenger counts through January were 211,033 compared to last year's 230,843 a decrease of 8.6. The decrease in total passengers is attributed primarily to the discontinuance of service by American Airlines. GA operations, year-to-date, compared to last year are up 12.7%, (29,838 operations vs. 26,483). Cargo volumes, year-to-date, are down 8.0% (4,044 tons vs. 4,162).

Noise Activity - The Monthly Airport Noise Statistics Report includes four separate reports with current month and year-to-date totals. The four reports are as follows:

- Noise Complaints – Summarizes noise complaint information for commercial (which includes cargo carriers), GA, and other operations.
- Noise Complaint Plot Map – Identifies the origin of the complaint.
- Commercial Late Night Activity – Summarizes activity between 10:00 p.m. to 11:00 p.m. and 11:00 p.m. to 7:00 a.m. by airline.
- Noise Violations – Summarizes violations for airline and GA operations. Provides a complete listing of each violation, includes violator's name, date and time of violation, aircraft type, aircraft noise level, and the time specific allowable noise level.

The Airport's Noise Office receives and investigates noise inquiries and complaints from local residents and residents who live outside of Long Beach. For the month of January,

ADMINISTRATION,
PLANNING & FACILITIES
333 W. Ocean Blvd., 9th Floor
Long Beach, CA 90802
Ph. (562) 570-6383
Fax (562) 570-6012

AIRPORT
4100 Donald Douglas Dr.
Long Beach, CA 90808
Ph. (562) 570-2600
Fax (562) 570-2601

ENGINEERING & STREET
MAINTENANCE
333 W. Ocean Blvd., 9th Floor
Long Beach, CA. 90802
Ph. (562) 570-6634
Fax (562) 570-6012

ENVIRONMENTAL
SERVICES
2929 E. Willow Street
Long Beach, CA 90806
Ph. (562) 570-2850
Fax (562) 570-2861

FLEET SERVICES
2600 Temple Avenue
Long Beach, CA 90806
Ph. (562) 570-5400
Fax (562) 570-5414

TRAFFIC &
TRANSPORTATION
333 W. Ocean Blvd., 10th Floor
Long Beach, CA 90802
Ph. (562) 570-6331
Fax (562) 570-7161

the Noise Office received 116 complaints compared to 228 complaints received during the same period in 2006.

Further analysis of the January noise complaints revealed the following:

- Total number of complainants: 30
- 70% (81 of 116) of the complaints were related to operations between 10:00 p.m. and 7:00 a.m.
- 13% (15 of 116) of the complainants reside in Seal Beach or Huntington Beach.

The above referenced information is displayed on the Airport's website (www.lgb.org).

Other Airport Activity

▪ CONSTRUCTION UPDATES

Taxiway Rehabilitation Projects – Over the next three years, Taxiway L and Taxiway C will undergo a complete rehabilitation. Construction work on Taxiway Lima began in February 2007 with the complete removal of the asphalt surface. The removed asphalt is being stockpiled on the airfield and will be recycled and processed for reuse on Taxiway Lima. The total project cost, \$24 million dollars, is being funded through FAA Airport Improvement Program (AIP) grants and Passenger Facility Charges (PFC).

Concession Upgrades - Creative Host Services (CHS) is expected to begin the remodel of the Airport's first floor snack bar. Once completed, the snack bar will provide greater food selections and new furnishings. During the remodeling, an interim food kiosk will be operational in the Terminal ticketing area. Additionally, a new outdoor food kiosk is scheduled to open at the south end of the Terminal. Products from local vendors Polly's and Sweet Jill's will be featured in both venues.

Once the work is completed on the snack bar, CHS will begin the complete remodeling of the restaurant located on the second floor of the terminal building. The new Legends of Aviation restaurant is expected to open in summer 2007.

CHS was awarded the concession contract for the concessions in the terminal in 2005. The above-mentioned remodeling project is a part of the existing contract and is separate from the proposed terminal improvement project.

▪ REGIONAL ISSUES

The City of Long Beach has been actively monitoring and participating in the efforts of the Southern California Regional Airport Authority (SCRAA) to "reconstitute" its structure, to make it more effective in encouraging airport capacity and airline service at outlying

airports, where the activity is desired. Mayor Foster sent a letter dated January 2, 2007, suggesting that certain of the organization's powers under its Joint Powers Authority governance be deleted, such as eminent domain and the ability to operate airports. Based on solicitation from SCRAA for further input, the Mayor sent another letter with more detailed suggestions for appropriate governance protocols, in order to maximize the organization's effectiveness, clearly identify its role and mission, and optimize participation by public entities within the region, including the City of Long Beach as a voting member. Members of the City Council have been provided a copy of both letters from the Mayor to SCRAA. The City's and other input will be considered at SCRAA's next meeting, scheduled for March 8, 2007.

▪ **COMMUNITY OUTREACH**

Five groups, for a total of 214 visitors participated in Airport tours during the month of February. The tour groups included Roosevelt Elementary School, the Tiger and Cub Scout troops and Veritas Christian School. Additionally, staff provided an airport tour for Matt Chiller, the new Legislative Director for Congresswoman Juanita Millender-McDonald. Airport staff participated in the Young Eagles Day of Flight, and made a presentation to the Military Officers of America.

TIMING CONSIDERATIONS

City Council action is not time critical.

FISCAL IMPACT

None.

SUGGESTED ACTION:

Approve recommendation.

Respectfully submitted,



CHRISTINE F. ANDERSEN
DIRECTOR OF PUBLIC WORKS

APPROVED:



GERALD R. MILLER
CITY MANAGER

CFA: SDJ: bp
P:\ccltrs\fy0607\Mar\Airport Monthly Activity Reports

Attachment



City of Long Beach
Working Together to Serve

Memorandum

Date: February 15, 2007
To: Airport Advisory Commission
From: Dennis Rambeau, Operations Specialist II, Airport Bureau
Subject: MONTHLY AIRPORT ACTIVITY REPORTS FOR JANUARY 2007

Please find attached the following reports:

- **Airport Activity Report**
- **Noise Complaint Report**
- **Plot of Complainants**
- **Late Night Activity**
- **Noise Violation Report**
- **Noise Violation List**



MONTHLY AIRPORT ACTIVITY REPORT January 2007

Current Month and Calendar Year To Date Statistics

	January			January		
	2007	2006	%Change	2007	2006	%Change
<u>Total Passenger Traffic</u>	211,033	230,843	-8.6%	211,033	230,843	-8.6%
<u>Enplaned Passengers</u>						
	<u>Load Factor</u>	<u>Load Factor</u>		<u>Load Factor</u>	<u>Load Factor</u>	
Alaska	53% 8,164	64% 7,703	6.0%	53% 8,164	64% 7,703	6.0%
US Airways/America West	53% 6,237	65% 7,743	-19.4%	53% 6,237	65% 7,743	-19.4%
American Airlines	0% 0	68% 11,194	-100.0%	0% 0	68% 11,194	-100.0%
Delta/Skywest	80% 4,386	0% 0		80% 4,386	0% 0	
JetBlue Airways	73% 86,284	82% 88,188	-2.2%	73% 86,284	82% 88,188	-2.2%
Total	69% 105,071	78% 114,828	-8.5%	69% 105,071	78% 114,828	-8.5%
<u>Airline Landings</u>	1,131	1,048	7.9%	1,131	1,048	7.9%
<u>Aircraft Operations (FAA)</u>						
Air + Commuter Carriers	2,185	2,321	-5.9%	2,185	2,321	-5.9%
Air Taxi & General Aviation	29,838	26,483	12.7%	29,838	26,483	12.7%
Military	42	52	-19.2%	42	52	-19.2%
Total	32,065	28,856	11.1%	32,065	28,856	11.1%
<u>Air Cargo</u>						
US Tons	4,044	4,162	-2.8%	4,044	4,162	-2.8%
Metric Tons	3,668	3,775	-2.8%	3,668	3,775	-2.8%

Note:

During the month, LGB airport had 41 allocated air carrier flight slots- Alaska (5), US Airways/America West (4), JetBlue (28), Airborne (1), FedEx (1), UPS (2) and 5 allocated commuter carrier flight slots - US Airways/America West (1), Delta (4). In addition, 20 commuter carrier flight slots- BAG (17) & Horizon (3) have been allocated & expected to start service by late this year.

Definitions:

Total Passenger Traffic – Total number of airline passengers both enplaned (departing) and deplaned (arriving).

Aircraft Operations – Aircraft takeoff, landing, or transition through the airspace controlled by the FAA's Long Beach air traffic control tower.

Air Carrier – A scheduled carrier, certificated under FAA Regulations (FAR) Parts 121, 125 or 135, max. takeoff weight of 75,000 lbs (passengers or cargo) or over.

Commuter Carrier - A scheduled carrier, certificated under FAA Regulations (FAR) Parts 121, 125 or 135, max. takeoff weight under 75,000 lbs

Air Taxi – Aircraft that provide public transportation of persons and/or property on-demand.

General Aviation – Aviation activity other than scheduled air carriers flights, flights by industrial operators or by charter and flights by public aircraft

Air Cargo – Cargo carried by aircraft, both inbound and outbound.



LONG BEACH AIRPORT MONTHLY REPORT

NOISE COMPLAINTS

January 2007

Current Month and CY-T-D Statistics for Long Beach Airport

	January 2007			CY-T-D 2007		
	2007	2006	%Change	2007	2006	%Change
<u>Air Carrier & Commuter Complaints</u>						
Passenger & Cargo Aircraft	85	117	-27.4%	85	117	-27.4%
<u>Non-Commercial Complaints</u>						
Jets	23	100	-77.0%	23	100	-77.0%
Props	4	7	-42.9%	4	7	-42.9%
Helicopters	4	4	0.0%	4	4	0.0%
Other	0	0		0	0	
Subtotal	31	111		31	111	-72.1%
TOTAL NOISE COMPLAINTS	116	228	-49.1%	116	228	-49.1%
<u>Airport Operations (FAA)</u>						
Air Carrier + Commuter Carriers	2,185	2,321	-5.9%	2,185	2,321	-5.9%
Air Taxi + General Aviation	29,838	26,483	12.7%	29,838	26,483	12.7%
Military Operations	42	52	-19.2%	42	52	-19.2%
TOTAL AIRCRAFT OPERATIONS	32,065	28,856	11.1%	32,065	28,856	11.1%

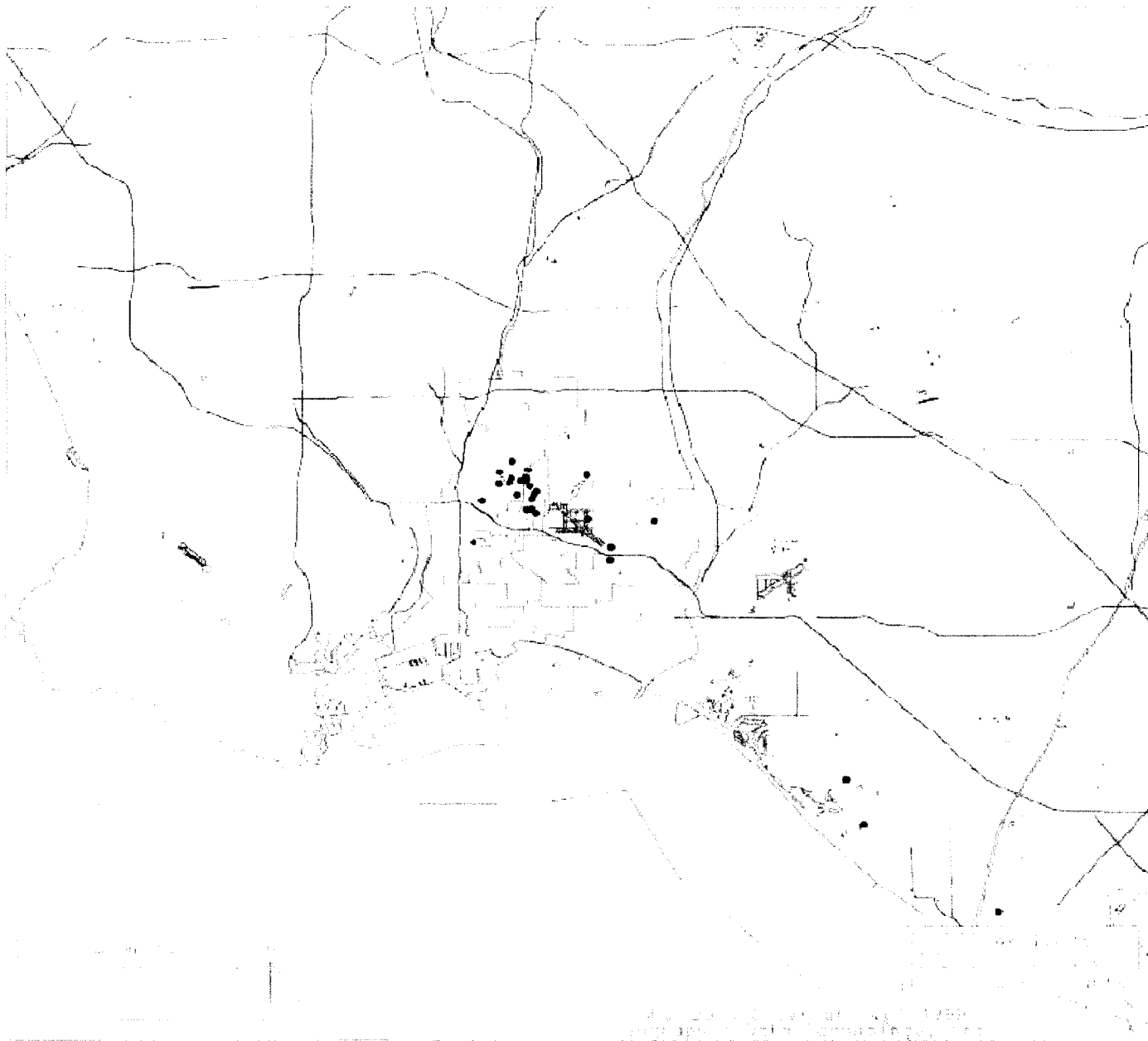
Notes:

Number of Complainants: 30

70% (81 of 116) of the complaints were related to operations between 10pm and 7am

13% (15 of 116) of the complaints came from complainants residing in Seal Beach or Huntington Beach

*** City Noise Ordinance currently allows for 41 air carrier and 25 commuter carrier flight slots, for a total of 66 daily flights.**



LONG BEACH
A I R P O R T

Noise Complainants
January 2007

Map prepared by the City of Long Beach
Department of Public Works, Planning and Community Development



**LONG BEACH AIRPORT MONTHLY REPORT
COMMERCIAL LATE NIGHT ACTIVITY (10pm - 7am)
January 2007**

Current Month and CY-T-D Statistics for Long Beach Airport

	January 2007			CY-T-D 2007		
	2007	2006	%Change	2007	2006	%Change
<u>Air Carrier & Commuter Operations</u>	2,185	2,321	-5.9%	2,185	2,321	-5.9%
10pm - 11pm Operations						
Alaska	5	6	-16.7%	5	6	-16.7%
Delta/SkyWest	0	0		0	0	
DHL/Airborne	0	0		0	0	
FedEx	0	0		0	0	
JetBlue Airways	37	22	68.2%	37	22	68.2%
UPS	1	0		1	0	
US Airways/America West	0	0		0	0	
Total	43	28	53.6%	43	28	53.6%
11pm - 7am Operations						
Alaska	0	0		0	0	
Delta/SkyWest	0	0		0	0	
DHL/Airborne	0	0		0	0	
FedEx	0	0		0	0	
JetBlue Airways	5	3	66.7%	5	3	66.7%
US Airways/America West	0	0		0	0	
UPS	0	0		0	0	
Total	5	3	66.7%	5	3	66.7%
10 pm - 7 am Grand Total	48	31	54.8%	48	31	54.8%

Notes:

2.2 % (48 of 2,185) of total commercial operations occurred between 10pm - 7am.

1.5 flights - Nightly average for ALL late night commercial flights, includes unanticipated delays.

0.16 flights - Nightly average for commercial flights after 11 PM.



LONG BEACH AIRPORT MONTHLY REPORT NOISE VIOLATIONS

January 2007

Current Month and CY-T-D Statistics for Long Beach Airport

January 2007

CY-T-D 2007

	2007	2006	%Change		2007	2006	%Change
<u>Air Carrier Violations</u>							
Alaska	0	1			0	1	
American Airlines	0	0			0	0	
DHL/Airborne	0	0			0	0	
FedEx	0	0			0	0	
JetBlue Airways	5	3	66.7%		5	3	66.7%
UPS	0	0			0	0	
US Airways/America West	0	0			0	0	
Total	5	4	25.0%		5	4	25.0%
<u>Commuter Violations</u>							
Delta/SkyWest	0	0			0	0	
US Airways/America West	0	0			0	0	
Total	0	0			0	0	
<u>Non-Commercial Violations</u>							
All GA, Charter & other	16	29	-44.8%		16	29	-44.8%
TOTAL NOISE VIOLATIONS	21	33	-36.4%		21	33	-36.4%
<u>Airport Monetary Fines Issued</u>	\$1,800	\$1,600	12.5%		\$1,800	\$1,600	12.5%
<u>Consent Decree Fines Issued</u>	\$15,000	\$9,000	66.7%		\$15,000	\$9,000	66.7%
TOTAL MONETARY FINES ISSUED	\$16,800	\$10,600	58.5%		\$16,800	\$10,600	58.5%
<u>Airport Operations (FAA)</u>							
Air Carrier + Commuter Carriers	2,185	2,321	-5.9%		2,185	2,321	-5.9%
Air Taxi + General Aviation	29,838	26,483	12.7%		29,838	26,483	12.7%
Military Operations	42	52	-19.2%		42	52	-19.2%
TOTAL AIRCRAFT OPERATIONS	32,065	28,856	11.1%		32,065	28,856	11.1%

Notes:

0.06% (21 of 32,065) of the Airport's total aircraft operations (Commercial & GA) resulted in a noise violation.

0.2% (5 of 2185) of the Airport's Commercial operations (Commercial & Commuter) resulted in a noise violation.

