

Airport Advisory Commission

Phyllis Ortman
Chair

Roland B. Scott, Jr.
Vice Chair

Bruce Alton

Elizabeth Cruz

Hal Gosling

Bob Luskin

Gerald Mineghino

Karen Sherman

Carol Soccio

Airport Management

Mario Rodriguez
Airport Director

Ken Mason
Executive Assistant

Carolyn Carlton-Lowe
Operations & Facilities
Bureau Manager

JC Squires
Manager, Finance
& Administration

Claudia Lewis
Administrative Officer

Fred Pena
Facilities Management Officer
Airside Operations Superintendent

Mario Fabila
Noise Compliance &
Environmental Affairs Officer

John Blood
Chief of Security

Kerry Gerot
Public Affairs Officer



**LONG BEACH
AIRPORT**

Building a Better Way to Fly



Long Beach Airport Monthly Noise Report October 2011

COMMERCIAL AIRCRAFT LATE NIGHT ACTIVITY
LGB Current Month & Calendar Year-To-Date Statistics (10 PM- 7AM)
October 2011

				October			CY-T-D 2011		
10PM - 11PM Activity	2011	2010	Change	2011	2010	Change			
(September Data)									
Air Carrier & Commuter Operations	2,540	2,491	2.0%	21,661	21,817	-0.7%			
(October Data)									
Alaska / Horizon	0	0		2	0				
Allegiant	2	0		10	0				
Delta / Skywest	0	0		11	3	266.7%			
FedEx	0	0		0	0				
Frontier	0	0		1	1				
JetBlue	11	17	-35.3%	272	294	-7.5%			
UPS	0	0		0	3				
US Airways	2	4	-50.0%	21	11	90.9%			
Subtotal 10PM-11PM	15	21	-28.6%	317	312	1.6%			
11PM- 7AM Activity	2011	2010	Change	2011	2010	Change			
Alaska / Horizon	0	0		0	0				
Allegiant	0	0		10	0				
Delta / Skywest	0	0		0	0				
FedEx	0	0		0	0				
Frontier	0	0		1	1	0.0%			
JetBlue	5	3	-66.7%	95	90	7.5%			
UPS	0	0		0	1				
US Airways	0	0		6	1	500.0%			
Subtotal 11PM-7AM	5	3	-66.7%	117	96	21.9%			
TOTAL	20	24	-16.7%	434	408	7.8%			

AIRPORT OPERATIONS & AIRCRAFT NOISE VIOLATIONS
LGB Current Month & Calendar Year-To-Date Statistics
October 2011

October				CY-T-D 2011		
Air Carrier Noise Violations	2011	2010	Change	2011	2010	Change
Allegiant	2	1	100.0%	13	1	1200.0%
FedEx	0	0		0	0	
Frontier	0	0		0	1	
JetBlue	4	7	-42.9%	136	141	-3.5%
UPS	0	0		0	6	
US Airways	0	0		2	1	100.0%
Subtotal	6	8	-25.0%	151	150	0.7%
Commuter Noise Violations	2011	2010	Change	2011	2010	Change
Alaska / Horizon	-	-		-	-	
Delta / Skywest	-	-		-	-	
US Airways	-	-		-	-	
Subtotal	0	0		0	0	
Non-Commercial Noise Violations	2011	2010	Change	2011	2010	Change
All GA, Charter & Other	12	15	-20.0%	132	153	-13.7%
TOTAL	18	23	-21.7%	283	303	-6.6%
Monetary Fines						
LBMC 16.43.090E Airport Surcharges	\$1,600	\$1,800		\$26,000	\$25,300	
LBMC 16.43.100 JBU Consent Decree	\$9,000	\$9,000		\$471,000	\$447,000	
TOTAL	\$10,600	\$10,800		\$497,000	\$472,300	
September Airport Operations (FAA)	2011	2010	Change	2011	2010	Change
Air Carrier + Commuter Carriers	2,540	2,491	2.0%	21,661	21,817	-0.7%
Air Taxi + General Aviation	23,691	25,746	-8.0%	211,766	224,105	-5.5%
Military Operations	110	52	111.5%	579	661	-12.4%
Total Aircraft Operations	26,341	38,289	-6.9%	234,006	246,583	-5.1%

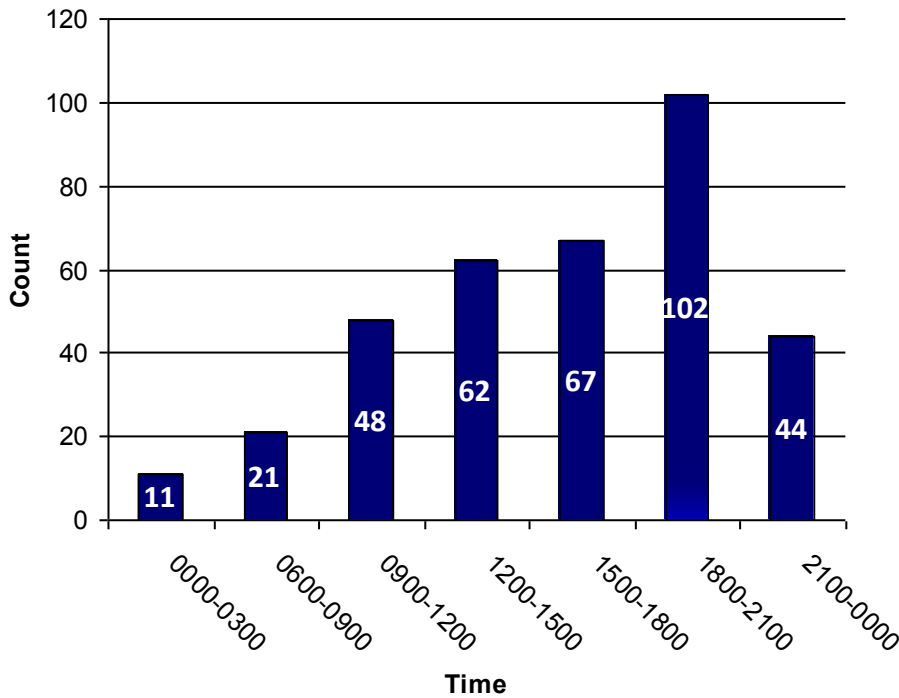
NOTES:

- 21.4% (45 of the 210) of JetBlue's violations for YTD 2011 can be attributed to activity between 10 PM - 11PM. This activity did not meet the criteria for Unanticipated Delay, and therefore a LBMC 16.43 violation of \$300 was issued for each occurrence.

October 2011

LGB AIRCRAFT NOISE COMPLAINTS

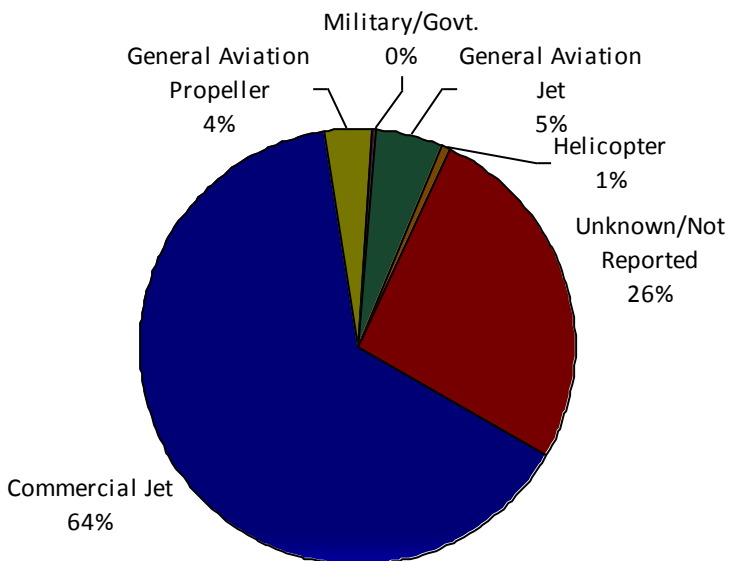
Complaints per Hour



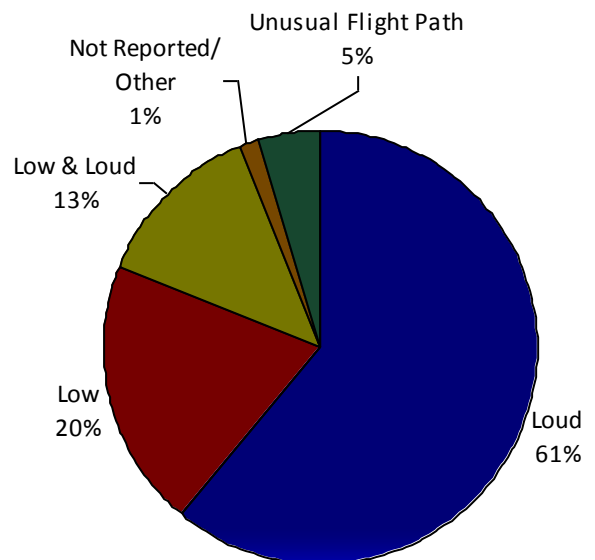
Complaints By Zip Code

90278	4
90713	1
90740	10
90755	3
90805	27
90807	17
90808	7
90815	1
92614	1
92626	231
92648	1
92649	3
Not Reported	49
Grand Total	355

Complaints by Type of Aircraft



Complaints by Type of Concern



October 2011

OWNER NAME	DATE	TIME	A/D	RWY	A/C TYPE	NMTID	SEL	LIMIT	STATUS
JF LLC	10/2/2011	12:28:55 AM	D	30	C525C	9	89.0	79.0	VIOLATION
Private	10/2/2011	11:47:58 PM	A	30	TB21	10	83.2	79.0	VIOLATION
Western Oilfields Supply Co.	10/3/2011	5:45:53 AM	A	30	C525A	10	89.8	79.0	VIOLATION
Audrey Enterprise LLC	10/4/2011	11:17:37 PM	A	30	G-IV	10	89.0	79.0	VIOLATION
Allegiant Air LLC	10/6/2011	11:59:05 PM	D	07L	MD83	1	100.7	79.0*	VIOLATION
Allegiant Air LLC	10/7/2011	12:06:51 AM	D	07L	MD83	1	97.7	79.0*	VIOLATION
XUCLA19 LLC	10/12/2011	12:00:34 AM	A	30	PA-34-220	10	83.1	79.0	VIOLATION
Univ. of Arkansas Board of Trustees	10/12/2011	11:33:59 PM	A	30	B200	10	85.4	79.0	VIOLATION
JetBlue Airways Corporation	10/14/2011	11:32:27 PM	D	30	A320	9	95.5	79.0	ALT ENF & VIO
Rapid Leasing Inc.	10/15/2011	6:37:40 AM	D	30	FA20	9	94.0	90.0	VIOLATION
K and L Aviation Incorporated	10/16/2011	5:42:31 PM	D	25L	C206	5	99.3	95.0	VIOLATION
Bank of Utah Trustee	10/16/2011	10:27:27 PM	A	30	GLF3	10	92.1	90.0	VIOLATION
JetBlue Airways Corporation	10/20/2011	12:48:41 AM	A	30	A320	10	93.4	79.0	ALT ENF & VIO
Paradigm Air Carriers Inc.	10/23/2011	9:07:24 PM	D	30	B727-223	9	109.1	102.5	VIOLATION
JetBlue Airways Corporation	10/23/2011	10:12:27 PM	A	30	A320	10	94.1	90.0	VIOLATION
SKA Consulting LLC	10/26/2011	12:55:00 AM	A	30	PC12	10	88.7	79.0	VIOLATION
Thomas and Betts Corp	10/27/2011	6:53:55 AM	D	30	H25B	9	92.9	90.0	VIOLATION
JetBlue Airways Corporation	10/29/2011	11:25:02 PM	A	30	A320	10	92.7	79.0	ALT ENF & VIO

DEFINITIONS:

A/D — Arrival and Departure

RWY — Runway

A/C Type — Aircraft Type

SEL — SENEL — Single Event Noise Equivalent Level

ALT ENF — Alternative Enforcement

NMTID — Noise Monitor



LONG BEACH AIRPORT

Building a Better Way to Fly



Long Beach Airport

4100 E. Donald Douglas Drive, Long Beach, CA 90808

www.lgb.org • lgbapt@longbeach.gov

Administration • (562) 570-2619