



CITY OF LONG BEACH

C-19

DEPARTMENT OF PUBLIC WORKS

333 West Ocean Boulevard 9th Floor • Long Beach, CA 90802 • (562) 570-6383 • Fax (562) 570-6012

October 6, 2015

HONORABLE MAYOR AND CITY COUNCIL
City of Long Beach
California

RECOMMENDATION:

Authorize the City Manager to accept an easement deed for the installation of a double check detector valve as part of the improvement plans to the commercial building located at 3705 East South Street; and adopt and accept Categorical Exemption CE-14-021. (District 9)

DISCUSSION

When significant new development is proposed, the Long Beach Water Department (LBWD) evaluates its facilities for sufficiency. For the renovation of a retail commercial property located at 3705 East South Street, the LBWD requires the installation of a double check detector valve to accommodate the proposed new use of this facility. It is necessary that the LBWD receive an easement on the property, as indicated on the attachment, in order to allow for the installation of this LBWD detector valve. This assembly is a backflow prevention device designed to protect water supplies from contamination. Improvements to the exterior and interior of the 127,337 square-foot building, for an anchor tenant, were recently completed. An additional 8,144 square feet of retail commercial space for other tenants, and additional parking spaces, are under construction.

The customary investigation was conducted involving public utilities and interested City of Long Beach (City) departments, and there were no objections to the proposed Grant of Easement. In conformance with the California Environmental Quality Act, Categorical Exemption CE-14-021 was issued for this project on March 7, 2014.

This matter was reviewed by Deputy City Attorney Linda Vu on May 6, 2015, and by Budget Management Officer Victoria Bell on September 11, 2015.

TIMING CONSIDERATIONS

City Council action on this matter is not time critical.

FISCAL IMPACT

A grant of easement processing fee in the amount of \$2,044 was deposited into the General Fund (GF) in the Public Works Department (PW). Approval of this matter will provide continued support to the local economy.

HONORABLE MAYOR AND CITY COUNCIL

October 6, 2015

Page 2

SUGGESTED ACTION:

Approve recommendation.

Respectfully submitted,



ARA MALOYAN, P.E.
DIRECTOR OF PUBLIC WORKS

AM:SC:sj

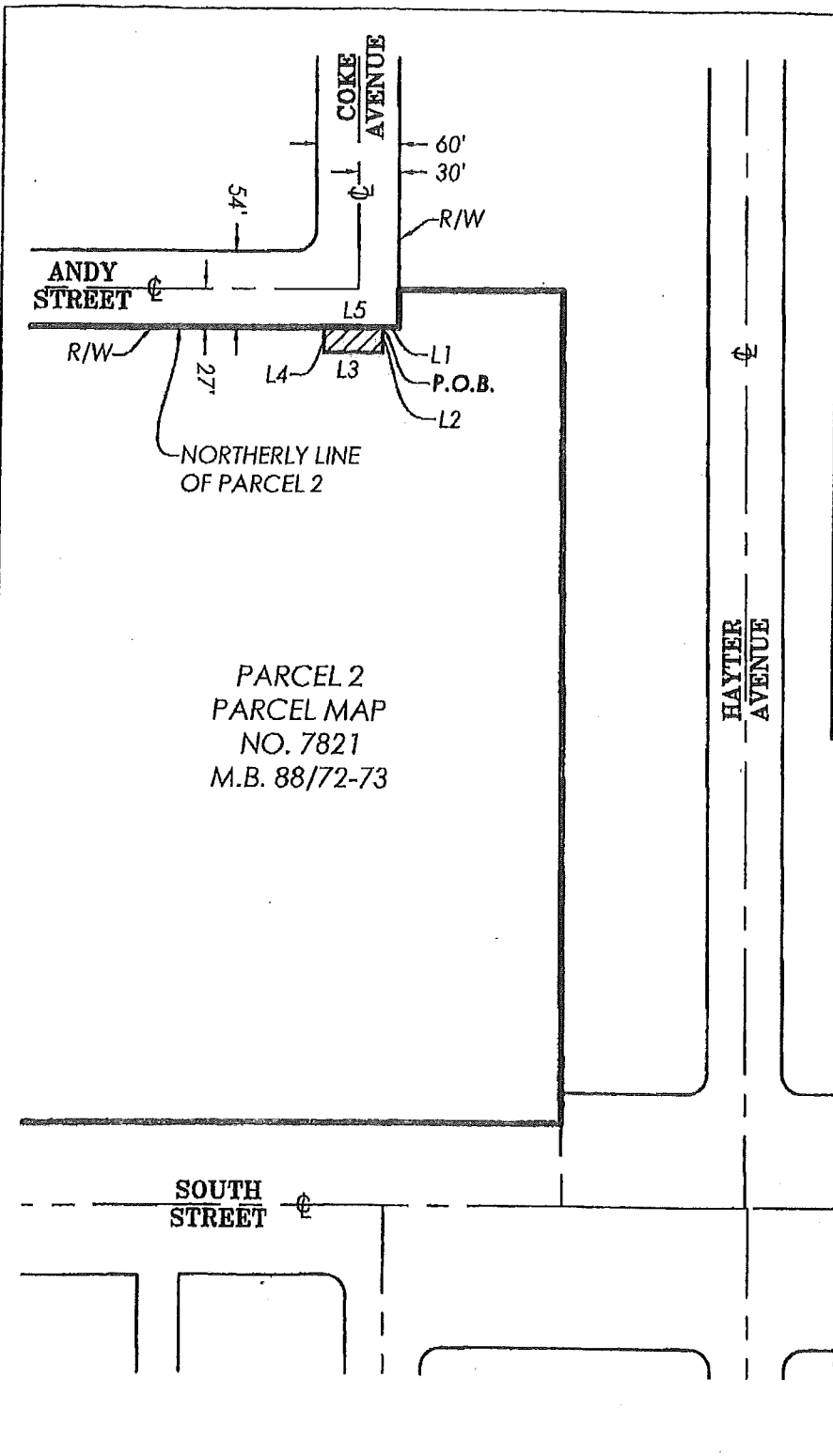
P: 3705 E. South Street

Attachments: Sketch

APPROVED:



PATRICK H. WEST
CITY MANAGER

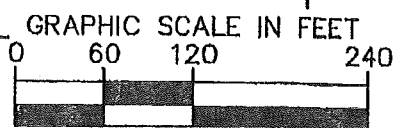
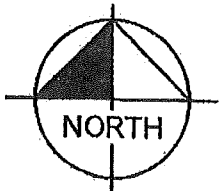


PARCEL 2
 PARCEL MAP
 NO. 7821
 M.B. 88/72-73

LEGEND:

- INDICATES LAND DESCRIBED
756 SQ. FT. / 0.017 ACRES
- P.O.B. POINT OF BEGINNING
- R/W RIGHT OF WAY
- ⊕ CENTER LINE

LINE DATA TABLE		
-	LENGTH	BEARING
L1	12.00'	S89° 41' 56"W
L2	18.00'	S0° 18' 04"E
L3	42.00'	S89° 41' 56"W
L4	18.00'	N0° 18' 04"W
L5	42.00'	N89° 41' 56"E



DESCRIPTION: THAT PORTION OF PARCEL 2 OF PARCEL MAP NO. 7821, M.B. 88, PAGES 72 AND 73.	LOCATION: CITY OF LONG BEACH COUNTY OF LOS ANGELES STATE OF CALIFORNIA	SHEET 1 OF 1
		SCALE: 1"=120'
WATER DISTRICT EASEMENT DEDICATION	Kimley»Horn <small>Engineering, Planning and Environmental Consultants 401 B Street - Suite 800 - San Diego, Ca. - 92101 Tel: (619) 234-8411</small>	DRAFTED: WMJ
		CHECKED: MJK
		DATE: 01/22/2015
		JOB NO: 094507093