



Dee Andrews  
City of Long Beach  
Councilmember, Sixth District

**R-12**

---

**Date:** December 8, 2015

**To:** Honorable Mayor and Members of the City Council

**From:** Vice Mayor Suja Lowenthal, Second District *SL*  
Councilmember Dee Andrews, Sixth District *DA*  
Councilmember Lena Gonzalez, First District *LG*

**Subject:** 6<sup>th</sup> District Trail of Infinite Hope

---

**RECOMMENDATION:**

Request City Manager to direct staff to implement the 6<sup>th</sup> District Trail of Infinite Hope.

**DISCUSSION:**

The Central area of Long Beach is very rich in its diversity, as it is with its many staples of hope. This includes individuals that have overcome some of the most oppressive obstacles to reach their goals, as well as, designated areas that once hosted these dreamers and/or honors them today. To raise attention to these inspirations of our community and to encourage others to keep hope alive, it is our desire goal to create a conduit that connect these historical locations within the central area. The conduit will be called the 6<sup>th</sup> District Trail of Infinite Hope.

The 6<sup>th</sup> District Trail of Infinite Hope will include a walking loop connecting historical sites where hope was founded, grew, and continues to inspire. The walking loop is based on similar walking trails in other communities created to highlight history, architecture, culture, and the arts. Initially, there would be one loop with the potential for future loops based on specific themes or for shorter walks. The walking loops will be identified by markers on the sidewalk that connects each location. A pamphlet is created to summarize each site and how it became a staple of hope for the residents of Long Beach. (EXHIBIT A)

The walking loops will be based on previous community efforts that identify those landmarks that make Central Long Beach unique. The loops include McBride Skate Park, where professional skaters like Tony Hawk helped to fund the park and Long Beach professional skater Terry Kennedy visits to inspire our youth. The Ernest S. McBride, Sr. Park, properly named after the founder of the Long Beach Branch of the NAACP whose struggles to fight for equality helped shape the diversity of Long Beach. Long Beach Polytechnic High School, the home of stars, scholars and athletes such as Willie Martin, Billie Jean King, Willie McGinest, Snoopy Dogg, Cameron Diaz, and Jenni Rivera...to name a few.

The loop will also highlight the Poly Walk of Fame which honors the extraordinary students that continue to prevail. Rosa Parks Park, honoring the courage and brave actions of an American Hero. The walking loop will also include major city assets like Long Beach Community College and Chittick Field where baseball great Babe Ruth once played.

The Pacific Electric greenbelt will form the northern edge of the loop, crossing through Jenni Rivera Memorial Park honoring a young lady from the *barrios* of Long Beach who ascended to become one of the top Hispanic singers in the world. NAACP Freedom Park, the nation's first park named after the legendary organization that helped change the face of America through equality. The walking loop will continue through to Martin Luther King, Jr. Park, honoring the man and the dream that continues to inspire generation after generation. The loop will also include the World Famous VIP Records, the location where legendary rappers Nate Dogg, Snoop Dogg, and Warren G got their start.

The intention of this walking loop is to raise awareness for residents and visitors alike of how Central Long Beach was formed to honor cultures locally and across the globe. It will inspire younger generations and continue to create a consciousness of hope within the community. This being done while promoting walking as a form of healthy physical activity, an important part of improving the health and wellness of residents in Central Long Beach. The Department of Health and Human Services has specifically dedicating resources to promote walking in the Central area through the Healthy Active Long Beach CX3 Project.

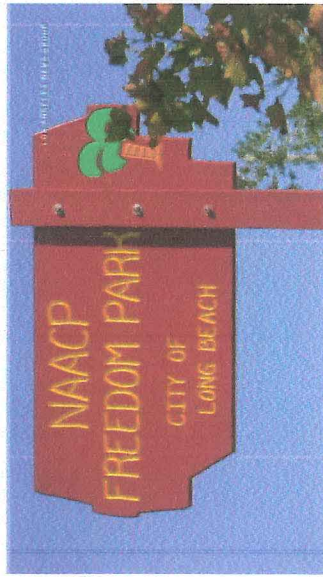
FISCAL IMPACT:

At this time there is no significant cost for this item. There will be a future cost of placards that share the history in which one-time funds will be requested to cover the cost.



### 7 - Jenni Rivera Memorial Park

Jenni Rivera was a Latin singer, songwriter, actress, television producer, and entrepreneur. Also an Alumnus of Poly High School, she was inducted into the Poly Walk of Fame in 2012 for her career achievements and charitable work. On December 16, 2014, the Long Beach City Council voted unanimously to approve naming a park in her honor. A 125-foot-long mural in tribute of Jenni Rivera's life and love of her hometown, Long Beach, stands at the park.



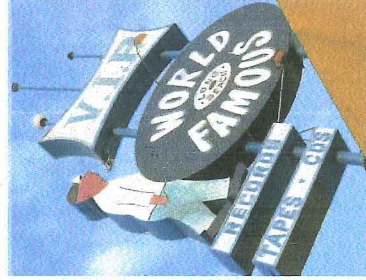
### 8 - NAACP Freedom Park

The first park in the world named in honor of the NAACP, the nation's oldest, largest and most widely recognized grassroots-based civil rights organization. Its mission is "to ensure the political, educational, social, and economic equality of rights of all persons and to eliminate racial hatred and racial discrimination."



### 9 - Martin Luther King, Jr. Park

The 19th Street Playground was renamed in honor of revolutionary spirit of one of America's most prominent advocates for racial justice and equality, Dr. Martin Luther King Jr. The park commemorates the courage, humility, and ultimate sacrifice of the historical civil rights activist. The park also features the Peace Garden, a provided space for our community to give back, to be creative, to learn, to love and to really live out a healthy life of what they have been called to do.



### 10 - VIP Records

VIP Records is an iconic music store in the heart of District 6. In the early 90's, after the success of Long Beach rappers Snoop Dogg, Warren G, and Nate Dogg, the owner of VIP Records remodeled a room in the back of his store and turned it in a recording studio for kids in the neighborhood to come out and learn how to rap, sing, DJ and produce. Despite adversity, VIP Records has been able to stay in business and it continues to be an advocate for youth and musical arts.



## 6th District Trail of Infinite Hope

The central area of Long Beach is very rich in its diversity, as it is with its many staples of hope. This includes individuals that have overcome some of the most opposing obstacles to reach their goals, as well as, designated areas that once hosted these dreamers and/or honors them today. To raise attention to these inspirations of our community and to encourage others to keep hope alive, it is our duty to create a conduit to connect these historical locations within the central area. The conduit is called the 6th District Trail of Infinite Hope. The trail includes a walking loop that connects historical sites where hope was founded, where it grew, and further continues to inspire

For more information on the 6th District Trail of Infinite Hope log onto:  
[www.longbeach.gov/district6](http://www.longbeach.gov/district6)



**Councilman  
Dee Andrews  
Sixth District**



### 1 - Ernest S. McBride, Sr. Skate Park

McBride Skate Park opened in 2012, its design involved local youth and Long Beach pro-skater Tony Hawk, who funded part of the project as well. Long Beach resident professional skater Terry Kennedy visits to inspire the youth as well.



### 2 - Ernest S. McBride, Sr. Park

The park is named in honor of Ernest S. McBride, Sr., the founder of the Long Beach Branch of the NAACP. Mr. McBride was a local leader and civil rights pioneer who worked endlessly to end discrimination in housing, schools, and the workplace. His integration efforts stretched across our city boundaries, from the Long Beach Police Department to the Naval Shipyard. His continued efforts brought our metropolis to the status of "One City".

McBride Park includes amenities such as a Youth Recreation Center, a Teen Center, and a Senior Center, as well as, a basketball court and a playground graciously donated by the LA Clippers.

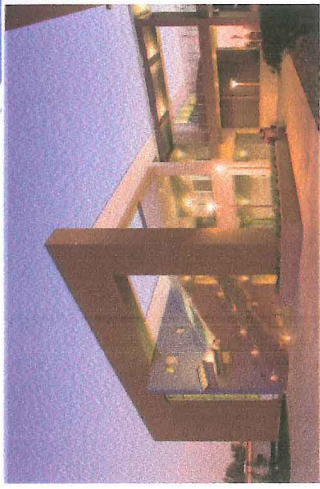
### 3 - Polytechnic High School Poly Walk of Fame

Poly High School founded in 1895, has a mission of supporting "the personal and intellectual success of every student, every day". Known for its academics and athletics, Poly has famous alumni such as Cameron Diaz, Snoop Dogg, Jenni Rivera, and Willie Martin. It also host the Poly Walk of Fame, designed to pay tribute to the famous alumni who have obtained great career success and honored Poly over the years. Current stars include Billie Jean King (Tennis Pro), Thelma Houston (Entertainer), Beverly O'Neil (Former 3 Term Long Beach Mayor), Willie Brown (Football), and Jenni Rivera (Entertainer)



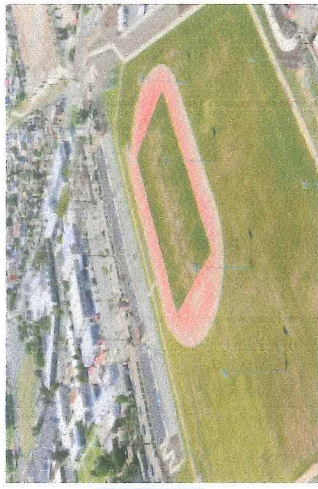
### 4 - Rosa Parks Park

Named in honor of the woman that continues to encourage others to speak up for their rights. Rosa Parks Park is a source of pride for the entire City of Long Beach. This park continues to bring people together to celebrate a courageous icon in the battle for equal rights.



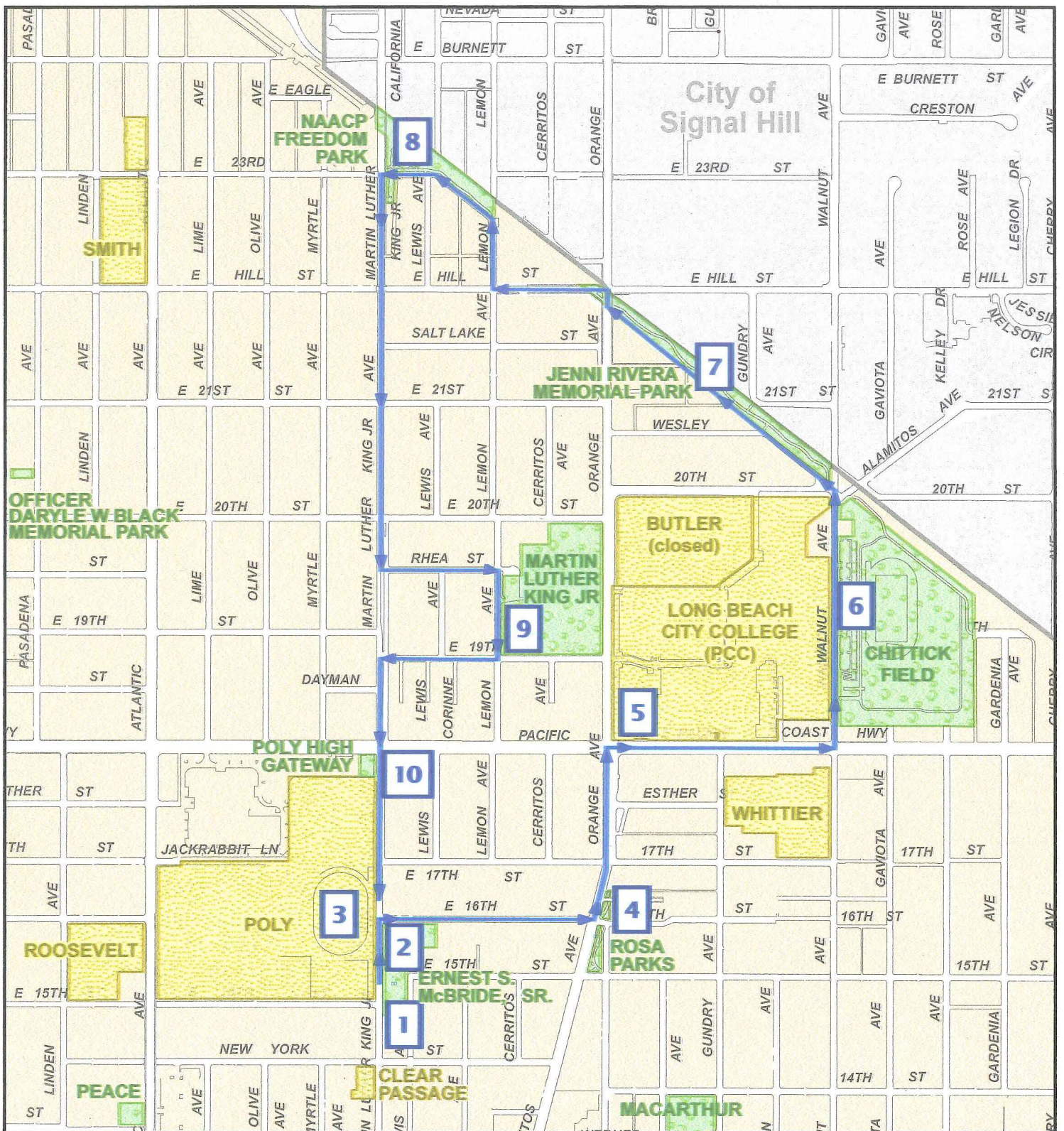
### 5 - Long Beach City College

Long Beach City College promotes equitable student learning and achievement, academic excellence, and workforce development by delivering high quality educational programs and support services to our diverse communities. With its Pacific Coast Campus at the center of District 6, we are proud to include this landmark as part of the trail of hope: many community members have pursued higher education at this institution.



### 6 - Chittick Field

The Chittick Field created a new sports complex that includes a football field, track and field facilities, three soccer fields, a parking lot, restroom, bleacher areas, sports lighting and landscaping. Chittick Field has become the home of pop-warner football. Sports greats such as Babe Ruth played on this field and NFL 3-time Super Bowl great, Willie McGinest trained here too.



## 6th District Trail of Infinite Hope

- 1) McBride Skate Park 2) Ernest S. McBride, Sr. Park, 0.04 miles  
 3) Long Beach Polytechnic High School, 0.07 miles 4) Rosa Parks Park, 0.3 miles  
 5) Long Beach City College PCC, 0.53 miles 6) Chittick Field, 0.9 miles  
 7) Jenni Rivera Memorial Park, 1.2 miles 8) NAACP Freedom Park, 1.7 miles  
 9) Martin Luther King, Jr. Park, 2.3 miles 10) VIP Records, 2.6 miles

