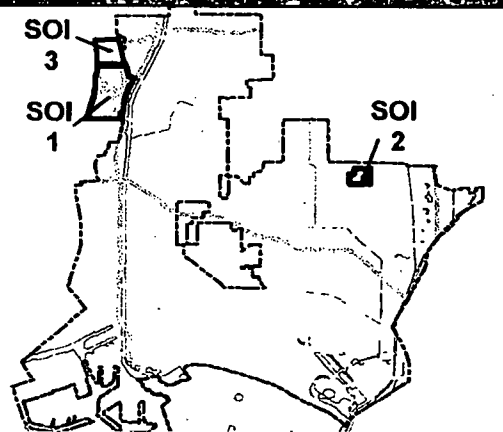


City of Long Beach  
Spheres of Influence



1 RESOLUTION NO. C-  
2

3 A RESOLUTION OF THE CITY COUNCIL OF THE  
4 CITY OF LONG BEACH SUPPORTING AND URGING THE  
5 RETENTION OF THE CITY'S EXISTING SPHERE OF  
6 INFLUENCE (SOI) AREA LOCATED EAST OF ALAMEDA  
7 STREET BETWEEN DEL AMO BOULEVARD AND VICTORIA  
8 STREET, AND AN ADDITION TO THE CITY'S EXISTING  
9 SPHERE OF INFLUENCE IN REGARD TO AN AREA  
10 LOCATED EAST OF ALAMEDA STREET BETWEEN  
11 VICTORIA STREET AND THE I-91 ARTESIA FREEWAY;  
12 AND INSTRUCTING THE DIRECTOR OF PLANNING AND  
13 BUILDING TO SUBMIT THIS RESOLUTION TO THE LOS  
14 ANGELES COUNTY LOCAL AGENCY FORMATION  
15 COMMISSION (LAFCO)  
16

17 WHEREAS, the Cortese-Knox-Hertzberg Local Government  
18 Reorganization Act of 2000 set forth in Government Code Sections 56000 et seq.  
19 governs the organization and reorganization of cities and special districts by local  
20 agency formation commissions established in each county (unless otherwise indicated  
21 all statutory references are to the Government Code); and

22 WHEREAS, Section 56425 et seq. provides that the local agency  
23 formation commission in each county shall develop and determine the sphere of  
24 influence of each local governmental agency within the county, and enact policies  
25 designed to promote the logical and orderly development of areas within the spheres of  
26 influence, as more fully specified in Sections 56425 et seq.; and

27 WHEREAS, Section 56430 requires that local agency formation  
28 commissions conduct a municipal service review (MSR) prior to, or in conjunction with,

1 consideration of actions to establish or update a Sphere of Influence (SOI) in  
2 accordance with Sections 56076 and 56425; and

3 WHEREAS, the Local Agency Formation Commission for Los Angeles  
4 County (the "Commission") is required by the Cortese Knox-Hertzberg Local  
5 Government Reorganization Act of 2000 to determine and update, as necessary, the  
6 Sphere of Influence of each local agency; and

7 WHEREAS, the Commission has undertaken the Municipal Service  
8 Review for the Gateway Cities Communities and Sphere of Influence Update for the  
9 City of Long Beach; and

10 WHEREAS, the Executive Officer has submitted to the Commission a  
11 draft Municipal Service Review and Sphere of Influence Update report, including  
12 proposed determinations and recommendations; and

13 WHEREAS, said report recommends a change to the current Sphere of  
14 Influence of the City of Long Beach; and

15 WHEREAS, Rancho Dominguez contains approximately 640 acres of  
16 industrial land currently designated as being within the City's existing Sphere of  
17 Influence, which area is depicted on the map attached hereto and incorporated herein  
18 by this reference as Exhibit "A"; and

19 WHEREAS, the City of Long Beach is significantly impacted by the  
20 industrial development within Rancho Dominguez; and

21 WHEREAS, community representatives of an elementary school located  
22 in the City of Long Beach and several residential areas adjacent to Rancho Dominguez  
23 have expressed support for retaining jobs within Rancho Dominguez while recognizing  
24 the need to monitor and control the environmental impacts of trucking, manufacturing,  
25 and loading activities associated with those jobs; and

26 WHEREAS, the General Plan Update for the City of Long Beach has  
27 identified preservation and maintenance of industrial areas as a key issue; and

28 WHEREAS, while most public services are presently provided to Rancho

Robert E. Shannon  
City Attorney of Long Beach  
333 West Ocean Boulevard  
Long Beach, California 90802-4664  
Telephone (562) 570-2200

1 Dominguez by the County of Los Angeles, the City of Long Beach does provide  
2 additional Fire contract services and is prepared to provide the necessary public  
3 facilities and services to support any future annexation; and

4 WHEREAS, there exists approximately 230 industrially developed acres  
5 located adjacent to the boundary of the City of Long Beach, which acreage is  
6 immediately north of the 640 acres currently designated as being within the City's  
7 existing Sphere of Influence and which is depicted on the map attached hereto and  
8 incorporated herein by this reference as Exhibit "A"; and

9 WHEREAS, said 230 acres is in such proximity to the City of Long Beach  
10 that the City is in a position to efficiently and economically offer municipal services to  
11 said area should it be annexed into the City at a future date;

12 NOW, THEREFORE, the City Council of the City of Long Beach resolves  
13 as follows:

14 Section 1. That the Local Agency Formation Commission for the County  
15 of Los Angeles is strongly urged and encouraged to retain the above described 640  
16 acres as depicted in Exhibit "A" within the City's existing Sphere of Influence.

17 Sec. 2. That the Local Agency Formation Commission for the County of  
18 Los Angeles is strongly urged and encouraged to expand the City's current Sphere of  
19 Influence to include the above described 230 acres as depicted in Exhibit "A", or, in the  
20 alternative designate said area as being within the joint Sphere of Influence of the City  
21 of Long Beach and the City of Compton.

22 Sec. 3. The Director of Planning and Building of the City of Long Beach is  
23 hereby directed to submit a certified copy of this resolution, together with appropriate  
24 supporting materials, to the Local Agency Formation Commission for the County of Los  
25 Angeles with a request for its earliest action.

26 Sec. 4. This resolution shall take effect immediately upon its adoption by  
27 the City Council, and the City Clerk shall certify to the vote adopting this resolution.

28 //

Robert E. Shannon  
City Attorney of Long Beach  
333 West Ocean Boulevard  
Long Beach, California 90802-4664  
Telephone (562) 570-2200

1  
2  
3  
4  
5  
6  
7  
8  
9  
10  
11  
12  
13  
14  
15  
16  
17  
18  
19  
20  
21  
22  
23  
24  
25  
26  
27  
28

I hereby certify that the foregoing resolution was adopted by the City Council of the City of Long Beach at its meeting of \_\_\_\_\_, 2006, by the following vote:

Ayes: Councilmembers: \_\_\_\_\_

\_\_\_\_\_

\_\_\_\_\_

\_\_\_\_\_

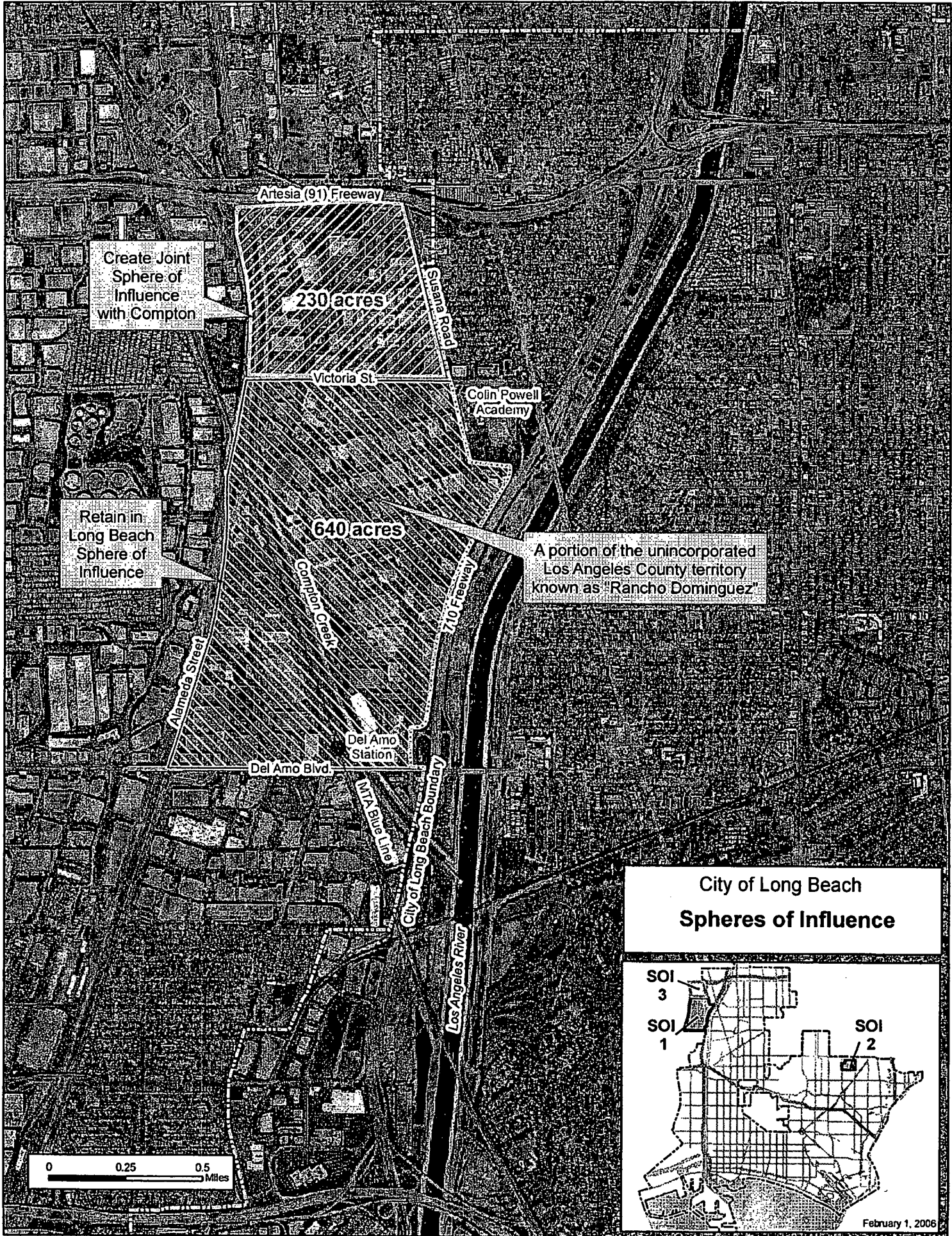
Noes: Councilmembers: \_\_\_\_\_

\_\_\_\_\_

Absent: Councilmembers: \_\_\_\_\_

\_\_\_\_\_

\_\_\_\_\_  
City Clerk



Create Joint Sphere of Influence with Compton

230 acres

Retain in Long Beach Sphere of Influence

640 acres

A portion of the unincorporated Los Angeles County territory known as "Rancho Dominguez"

**City of Long Beach  
Spheres of Influence**

