



CITY OF LONG BEACH

C-16

DEPARTMENT OF PUBLIC WORKS

333 WEST OCEAN BOULEVARD • LONG BEACH, CA 90802 • (562) 570-6383 • FAX (562) 570-6012

August 5, 2008

HONORABLE MAYOR AND CITY COUNCIL
City of Long Beach
California

RECOMMENDATION:

Request the City Manager or designee to accept an easement deed for sidewalk widening at 110 East Anaheim Street. (District 1)

It is the goal of the Department of Public Works to widen the public rights-of-way to the standards established in the City's General Plan. When significant new development is proposed, the public rights-of-way adjacent to the site are reviewed for sufficiency to accommodate the new development. For the construction of a 4,400 square-foot commercial building at 110 E. Anaheim Street, the dedication of additional sidewalk width is recommended and is shown on the attached exhibit. In particular, the dedication recommended is as follows:

A sidewalk easement should be provided on Anaheim Street along the property frontage. This action will provide for the widening the sidewalk from 7.5 to 10 feet, which is our minimum standard for major arterials. The developer of the subject property agreed to development conditions that include the described dedications and associated improvements.

This matter was reviewed by Deputy City Attorney Linda Trang on June 30, 2008, and by Budget Management Officer Victoria Bell on July 14, 2008. In conformance with the California Environmental Quality Act, Categorical Exemption No. CE-07-09 was issued for this project.

TIMING CONSIDERATIONS

City Council action on this matter is not time critical.

**DIRECTOR'S OFFICE
BUDGET & PERSONNEL**
333 W. Ocean Blvd., 9th Floor
Long Beach, CA 90802
Ph. (562) 570-6383
Fax (562) 570-6012

ENGINEERING
333 W. Ocean Blvd., 9th Floor
Long Beach, CA 90802
Ph. (562) 570-6634
Fax (562) 570-6012

**ENVIRONMENTAL
SERVICES**
2929 E. Willow Street
Long Beach, CA 90806
Ph. (562) 570-2850
Fax (562) 570-2861

FLEET SERVICES
2600 Temple Avenue
Long Beach, CA 90806
Ph. (562) 570-5400
Fax (562) 570-5414

PUBLIC SERVICE
1601 San Francisco Avenue
Long Beach, CA 90813
Ph. (562) 570-2782
Fax (562) 570-2729

HONORABLE MAYOR AND CITY COUNCIL
August 5, 2008
Page 2

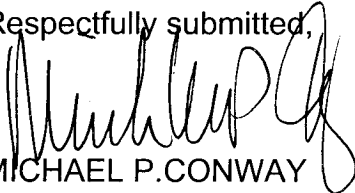
FISCAL IMPACT

A document processing fee of \$490 was paid by the developer and deposited in the General Fund (GP 100) in the Department of Public Works (PW).

SUGGESTED ACTION:

Adopt recommendation.

Respectfully submitted,



MICHAEL P. CONWAY
DIRECTOR OF PUBLIC WORKS

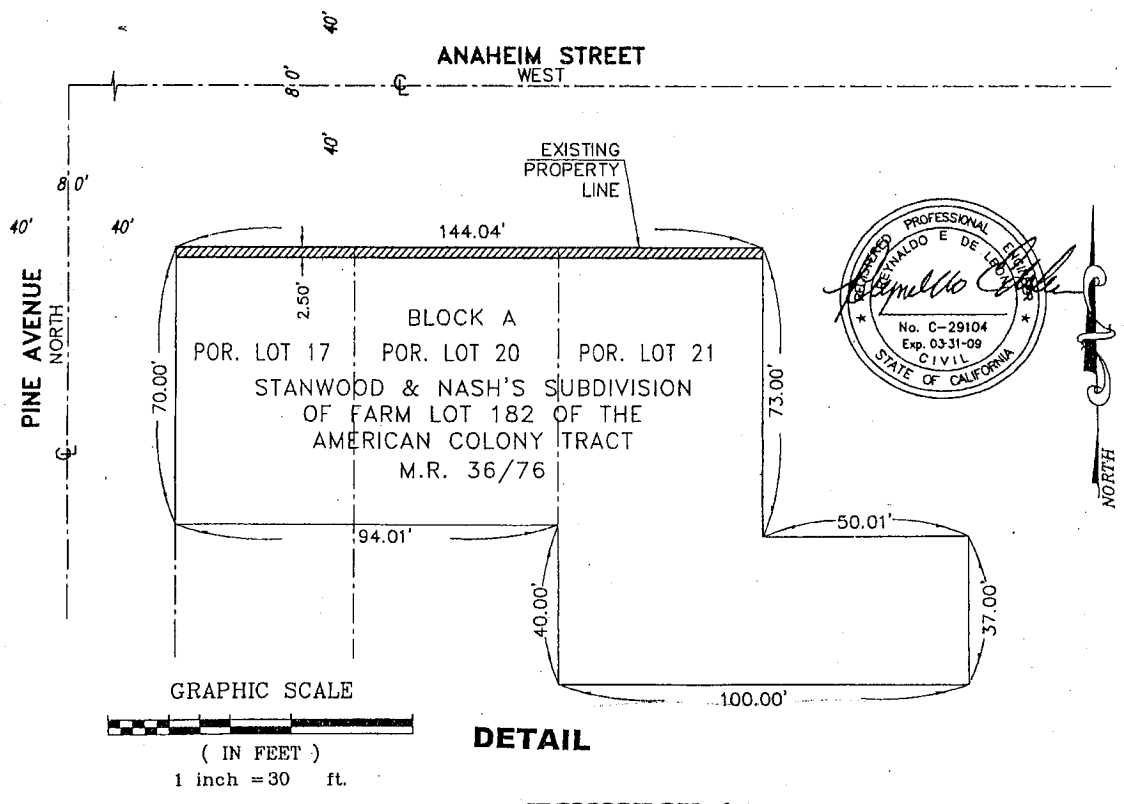
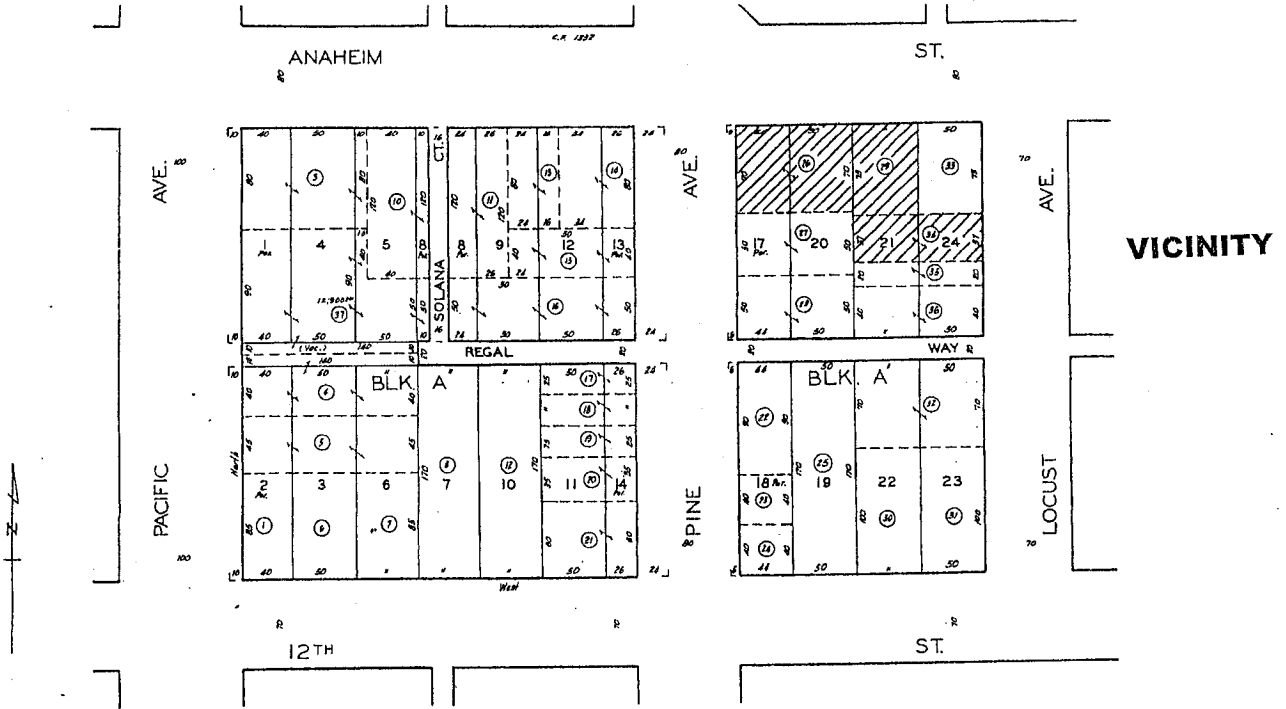
P:\CL\ROW ded 110 E Anaheim.doc
MAC:GMM:SC:db

Attachment

APPROVED:


PATRICK H. WEST
CITY MANAGER

SKETCH NO. 2050
SKETCH SHOWING PORTIONS OF LOTS 17, 20 AND 21, BLOCK A,
STANWOOD AND NASH'S SUBDIVISION, DEDICATED TO THE
CITY OF LONG BEACH FOR SIDEWALK PURPOSES.



DETAIL
EXHIBIT A