



CITY OF LONG BEACH

C-18

DEPARTMENT OF PUBLIC WORKS

333 WEST OCEAN BOULEVARD LONG BEACH, CA 90802 562.570.6383 FAX 562.570.6012

November 13, 2012

HONORABLE MAYOR AND CITY COUNCIL
City of Long Beach
California

RECOMMENDATION:

Authorize the City Manager, or designee, to grant an easement to the Aquarium of the Pacific (Aquarium), a California nonprofit public benefit corporation, to facilitate the construction of seawater intake pipeline. (District 2)

DISCUSSION

The Aquarium is requesting that the City of Long Beach grant an easement, as depicted on the attachment, to allow for the construction of a seawater intake pipeline between the Los Angeles River Estuary and the Aquarium holding tanks. The pipeline will consist of an approximately 250-foot long underground pipeline extension and a submersible pump attached to an existing fishing pier. The system will pump about 50,000 gallons of seawater per day, and no more than fifteen million gallons per year. Currently the Aquarium transports seawater by diesel-fueled barge at a cost of \$25,000 annually.

By directly providing seawater through this pipeline, other benefits include: the reduction of the Aquarium's carbon footprint by reducing particulate emissions in a highly impacted area; the reduction in operational risk by eliminating dependence on one firm to transport seawater; and increase the Aquarium's life support system operating ability to provide high quality seawater exhibits and maintain animal life in a healthy manner.

The proposed easement is primarily within a parking lot for Shoreline Aquatic Park. The project was presented to and approved by the Parks and Recreation Commission on November 18, 2010. The easement will allow for the installation, maintenance and repair of the pipeline by the Aquarium.

The Seawater Intake System was reviewed and granted a Categorical Exemption on February 29, 2011. Additionally, the Aquarium was granted a Coastal Development Permit for the project on August 14, 2012.

This matter was reviewed by Deputy City Attorney Linda Trang on November 1, 2012 and by Budget Management Officer Victoria Bell on November 2, 2012.

TIMING CONSIDERATIONS

City Council action is requested on November 13, 2012 in order to allow Aquarium staff to commence with construction activities prior to the rainy season and to hasten budget savings associated with the project.

HONORABLE MAYOR AND CITY COUNCIL

November 13, 2012

Page 2

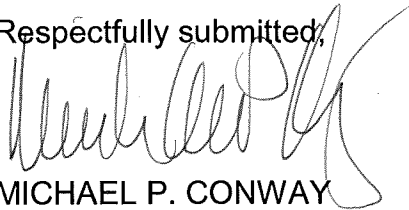
FISCAL IMPACT

There is no fiscal impact to the General Fund (GP) or Tidelands Operating Fund (TF). The pipeline construction and operating costs will be funded by the Aquarium. There is no direct local job impact associated with this recommendation for grant of easement.

SUGGESTED ACTION:

Approve recommendation.

Respectfully submitted,



MICHAEL P. CONWAY
DIRECTOR OF PUBLIC WORKS

APPROVED:



PATRICK H. WEST
CITY MANAGER

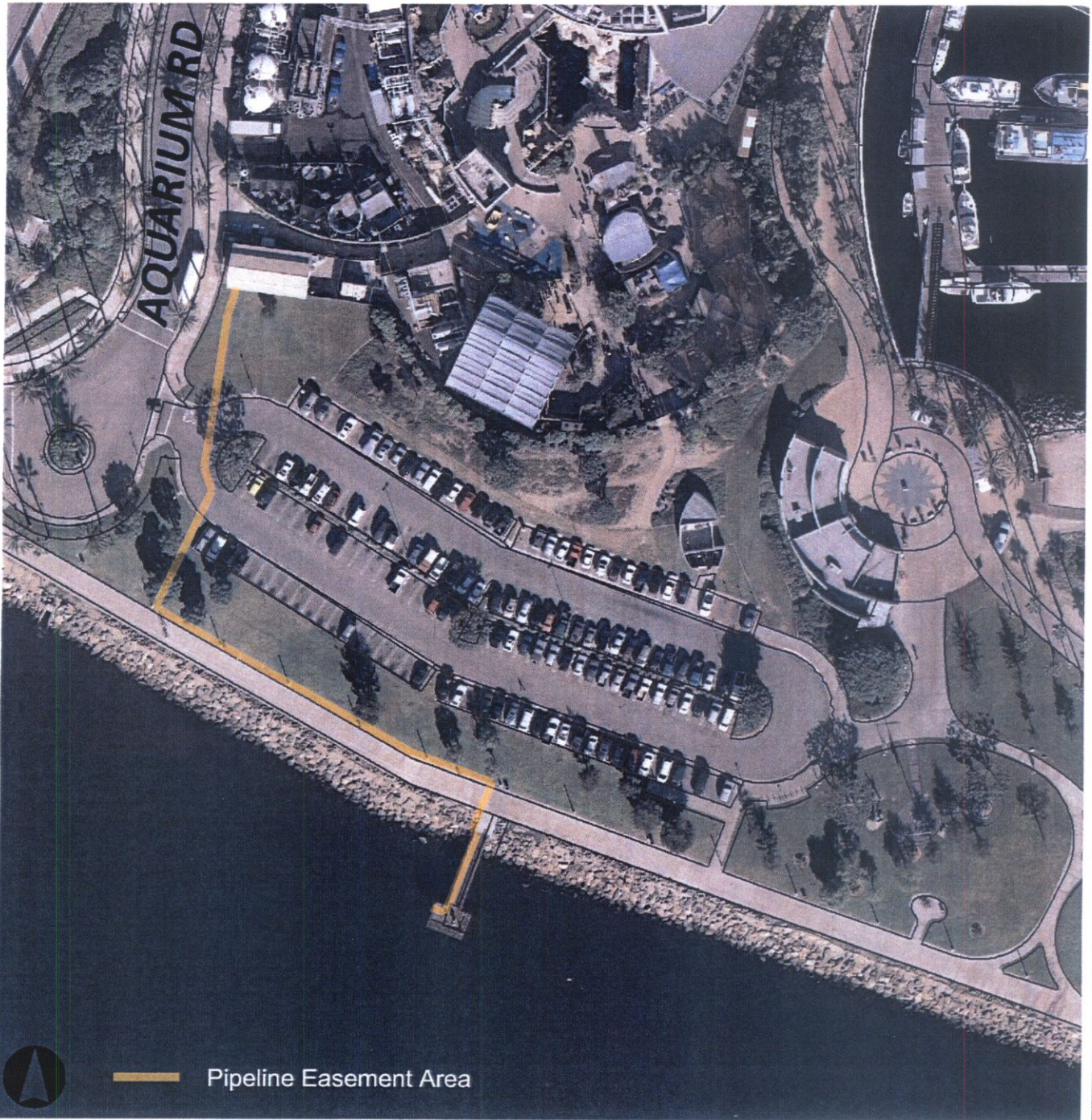
MPC:VRV:JMV:jmv
P:AoP\SeaWater Intake Rev2.doc

Attachment- Plat Map of Easement Area



city of
longbeach CA

Aquarium of the Pacific - Seawater Intake System



Attachment