



# CITY OF LONG BEACH

# C-17

## DEPARTMENT OF PUBLIC WORKS

333 WEST OCEAN BOULEVARD • LONG BEACH, CA 90802 • (562) 570-6383 • FAX (562) 570-6012

August 14, 2007

HONORABLE MAYOR AND CITY COUNCIL  
City of Long Beach  
California

### RECOMMENDATION:

Authorize the City Attorney to accept an easement deed for storm drain purposes and authorize a quitclaim of the easement to the County of Los Angeles related to the development of Douglas Park. (District 5)

### DISCUSSION

A master drainage plan was prepared for the development of Douglas Park, with the required storm drain main lines being built by the developer. Upon completion of construction, the City of Long Beach will quitclaim these public storm drain facilities to the County for permanent maintenance. Most of the drainage improvements will be constructed within the area being subdivided for this development (Tract No. 61252-1), and the required easement dedications were incorporated into that recorded map. A small portion of the storm drain facilities is located outside of the map and must be dedicated by separate instrument. It is recommended that the storm drain easement shown on Exhibit A be accepted by the City and then transferred to the County upon their acceptance of the final construction.

This matter was reviewed by Deputy City Attorney Lori A. Conway on July 26, 2007. In conformance with the California Environmental Quality Act, Environmental Impact Report No. 2001051048 was certified for this project.

### TIMING CONSIDERATIONS

City Council action on this matter is not time critical.

### FISCAL IMPACT

A document processing fee of \$490 was paid by the developer and deposited in the General Fund (GP) in the Department of Public Works (PW).

**AIRPORT**  
4100 Donald Douglas Dr.  
Long Beach, CA 90808  
Ph. (562) 570-2600  
Fax (562) 570-2601

**BUSINESS OPERATIONS  
BUREAU**  
333 W. Ocean Blvd., 9<sup>th</sup> Floor  
Long Beach, CA 90802  
Ph. (562) 570-6383  
Fax (562) 570-6012

**ENGINEERING & STREET  
MAINTENANCE**  
333 W. Ocean Blvd., 9<sup>th</sup> Floor  
Long Beach, CA 90802  
Ph. (562) 570-6634  
Fax (562) 570-6012

**ENVIRONMENTAL  
SERVICES**  
2929 E. Willow Street  
Long Beach, CA 90806  
Ph. (562) 570-2850  
Fax (562) 570-2861

**FACILITIES  
BUREAU**  
333 W. Ocean Blvd., 9<sup>th</sup> Floor  
Long Beach, CA 90802  
Ph. (562) 570-5786  
Fax (562) 570-6012

**FLEET  
SERVICES**  
2600 Temple Avenue  
Long Beach, CA 90806  
Ph. (562) 570-5400  
Fax (562) 570-5414

**TRAFFIC &  
TRANSPORTATION**  
333 W. Ocean Blvd., 10<sup>th</sup> Floor  
Long Beach, CA 90802  
Ph. (562) 570-6331  
Fax (562) 570-7161

HONORABLE MAYOR AND CITY COUNCIL

August 14, 2007

Page 2

SUGGESTED ACTION:

Approve recommendation.

Respectfully submitted,



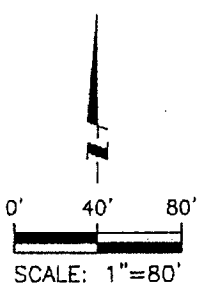
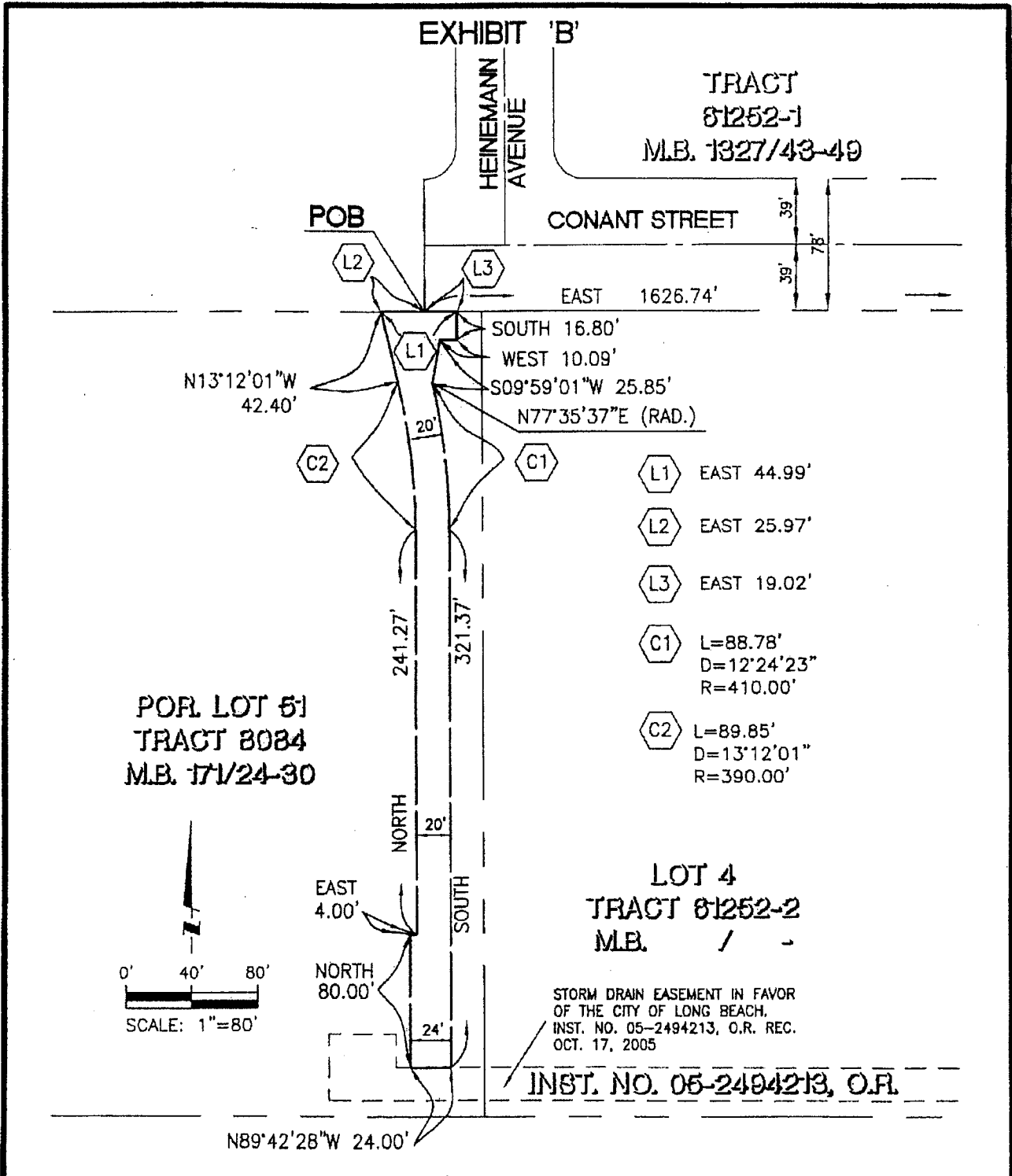
CHRISTINE F. ANDERSEN  
DIRECTOR OF PUBLIC WORKS

GMM:SC:km  
P:\CL\ROW Douglas Park storm drain 774E CL.rev2.doc

Attachment

APPROVED:

*for*   
ANTHONY W. BATTS  
CITY MANAGER



<b>DESCRIPTION:</b> STORM DRAIN EASEMENT OVER THAT PORTION OF LOT 51, TRACT 8084, M.B. 171/24-30		SHEET 1 OF 1	
		SCALE: 1" = 80'	
BOEING REALTY CORPORATION DOUGLAS PARK		<b>PSOMAS</b> 3187 Red Hill Avenue #250 Costa Mesa, California 92626 (714) 751-7373 www.psomas.com	
		DRAFTED: KVO CHECKED: PJF <i>[Signature]</i> DATE: 5/22/2007 JOB NO.: 2B0E020200 TB	

D:\2B0E020200\survey\York B\Storm Drain Easement\X-ESM-STORM.dwg Plotted by: amorgan on May 23, 2007 - 12:18:47

**EXHIBIT A**