

MAC Report

July 2021



SUBMITTED BY THE MARINE BUREAU



TABLE OF CONTENTS

1. Marinas and Waterways
2. Beaches and Waterways
3. Marine Maintenance Work Order Graphs
4. Pump Out Inspection Report
5. Tide Table



MARINAS AND WATERWAYS

Accomplishments

- ❖ Staff replaced all gale lights at Station 35.
- ❖ Staff worked in joint effort with Public Works of removing, hauling and storing multiple sculptures that have been donated to the City of Long Beach PRM dept.
- ❖ Staff repainted and stenciled red and blue curbing at Lifeguard Head Quarters Station 32.
- ❖ Staff changed the American and California flags both at Belmont Pier & Belmont Veterans parking lots.
- ❖ Staff relocated all mail boxes at the D-5 restrooms.
- ❖ Staff resurfaced floors at A-9 Public restrooms.
- ❖ Staff completed the installation of Teflon cart stops in Basin 1,2,3 and 4.
- ❖ Staff completed the painting of all benches and trash receptacles in Bixby annex park to match Bluff Park.
- ❖ Staff completed the replacement of gale lights at Lifeguard Station 21.

Projects in the works

- ❖ Staff is in the process of replacing all the damaged and missing signs throughout the Long Beach Shoreline Marina. Staff has already replaced all the “Gangway” and “No Visitor” signs. 90% completed
- ❖ Staff is in the process of retrofitting the existing twelve (12) booster pumps from a wet system to a dry fire suppression system in the Long Beach Shoreline Marina. 80% completed
- ❖ Staff is in the process of making improvements to the Alamitos Bay Marina office including: painting the interior of the building. 50% completed
- ❖ Staff is in the process of inspecting and tightening all the loose fingers throughout the Long Beach Shoreline Marina. 40% completed



MARINAS AND WATERWAYS

- ❖ Staff is in the process of inspecting and replacing all the damaged gangway water supply lines throughout Long Beach Shoreline Marina, as needed. 45% completed
- ❖ Staff is in the process of repairing the restroom plumbing throughout Long Beach Shoreline Marina. 35% completed
- ❖ Staff is in the process of repairing concrete fingers throughout Long Beach Shoreline Marina. 10% completed
- ❖ Staff is in the process of replacing all electrical components (breakers, receptacles, etc.) inside the pedestals located throughout Shoreline & Rainbow Harbor Marina's. 20% completed
- ❖ Staff is in the process of replacing exterior doors at the Belmont Pool office. 50% completed
- ❖ Staff is in the process of installing two (2) new power pedestals on long dock North. 50% completed
- ❖ Staff is in the process of fabricating new fencing at boatowner's restroom D-6. 90% completed
- ❖ Staff is in the process of painting memorial benches in ABM. 35% completed
- ❖ Staff is in the process of installing two isolation valves for all 31 Gangway's in Shoreline Marina. 5% completed
- ❖ Staff is in the process of replacing old and adding where needed "Boat owner parking only" signs as well as installing all new Bike route signs in the City. 85% completed
- ❖ Staff is in the process of installing pony gates throughout Basin 3. 20% completed
- ❖ Staff is in the process of installing two isolation valves for all 33 Gangway's in Shoreline Marina. 85% completed
- ❖ Staff is in the process of replacing old and adding where needed "Boat owner parking only" signs as well as installing all new Bike route signs on Mole Road Lot. 95% completed
- ❖ Staff is currently preparing and painting all trash enclosure doors on Mole road lot. 80% completed



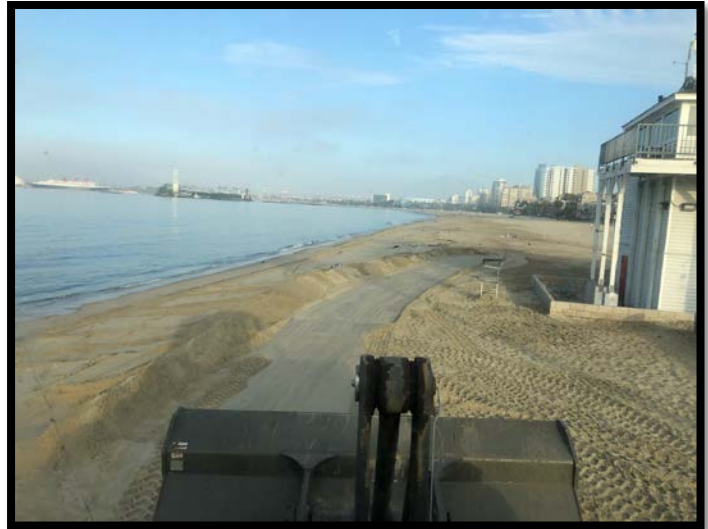
MARINAS AND WATERWAYS

- ❖ Staff is in the process of painting all curbs and poles in Marine Stadium. 90% complete
- ❖ Staff is in the process of repairing seawall on Bayshore. 55% complete
- ❖ Staff is currently in the process of retrofitting all pedestals inside of Rainbow Harbor Marina (SHM 1,2,3,4 docks 8 & 9) 35% complete

BEACHES AND WATERWAYS

Accomplishments

- ❖ Beach Maintenance staff removed over 111 tons of trash and debris from the beaches and inner bays.
- ❖ Beach Maintenance staff removed trash and debris from the beach waterline.
- ❖ Beach Maintenance staff serviced 300 trash receptacles during the month of July.
- ❖ Beach Maintenance staff built up and maintained the berm on the East Peninsula beach between 62nd – 72nd place and along the bayside.
- ❖ Beach Maintenance staff swept the bike/pedestrian path.
- ❖ Beach Maintenance staff conducted weekly cleanups of several homeless encampments throughout the beach areas.
- ❖ Beach Maintenance staff raked and cleaned throughout beach areas.
- ❖ Beach Maintenance planted nine (9) trees throughout tidelands area.
- ❖ Beach Maintenance staff mulched Shoreline center medians.
- ❖ Beach Maintenance staff conducted several irrigation repairs throughout various parks.
- ❖ Queensway Bay staff conducted a cleaning of all 60 basket filters in the Rainbow Lagoon; six days per week, twice per day. Staff replaces and cleans all 60 baskets once a month.
- ❖ Queensway Bay staff conducted daily removal of water borne debris and algae in the Rainbow Lagoon, Rainbow Harbor Marina and Long Beach Shoreline Marina using hand nets and a small skimmer boat.
- ❖ Queensway Bay staff repaired Aerator #6.
- ❖ Queensway Staff removed 7,000 gallons of water from the Rainbow Lagoon Vault B overflow, repaired ventilation motor and sub pumps.
- ❖ Queensway Bay staff removed trash from docks, three times per week.
- ❖ Queensway Bay staff conducted daily cleaning and maintenance of all trash skimmers on the docks, seven days per week.



BEACHES AND WATERWAYS

- ❖ Queensway Bay staff conducted monthly inspections on all docks throughout Rainbow Harbor Marina.
- ❖ Queensway Bay staff serviced all sewage pumps on the commercial docks.
- ❖ Queensway Bay staff conducted weekly encampment posting and cleanups.
- ❖ Queensway Bay staff cleaned and sanitized the public elevator near the bird cage.
- ❖ Queensway Bay staff completed 118 work orders and 9 Go Long Beach request for the month of July.
- ❖ Queensway Bay staff repaired the electric vault cover near Dock 3 in the Rainbow Harbor Marina.
- ❖ Queensway Bay staff replaced 1,900 ft. of rub rail on Dock 1.
- ❖ Queensway Bay staff distributed over 150 trash boxes and 4 dumpsters in preparation for 4th of July crowds.
- ❖ Queensway Bay staff replaced all lighting at the Navy Memorial sphere.
- ❖ Queensway Bay staff conducted daily graffiti removal of the entire Rainbow Harbor area, including the Queensway bridge bike path and the Pier Point parking lot.
- ❖ Queensway Bay staff performed routine maintenance on the Wave and Dolphin Fountain.
- ❖ Queensway Bay staff conducted routine maintenance on the Wave Fountain filter pumps.
- ❖ Queensway Bay staff power washed the exterior of the Wave Fountain bi-weekly.



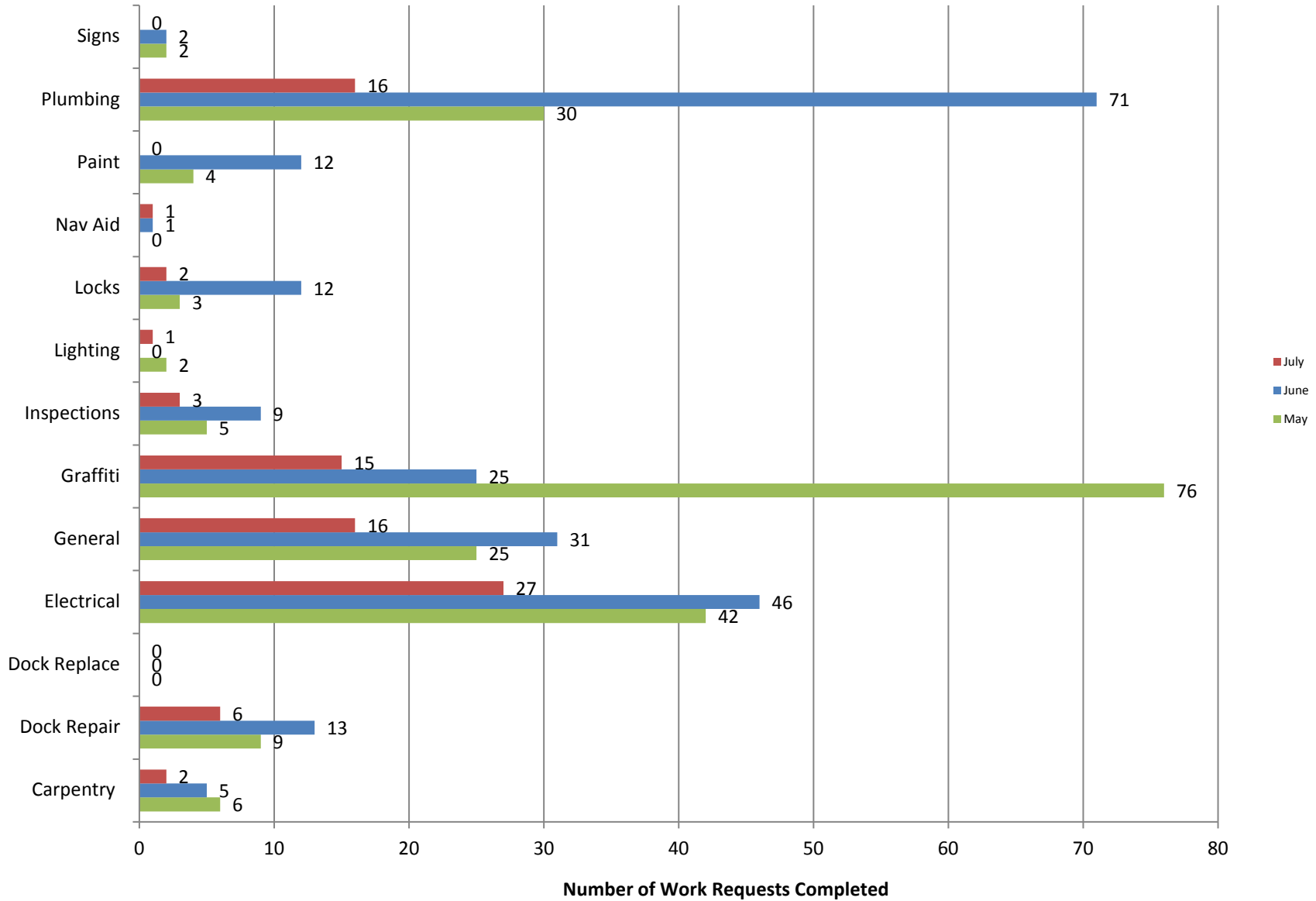
Projects in the works

- ❖ Beach Maintenance staff is continuing the process of rebuilding sections of the peninsula where erosion occurs.



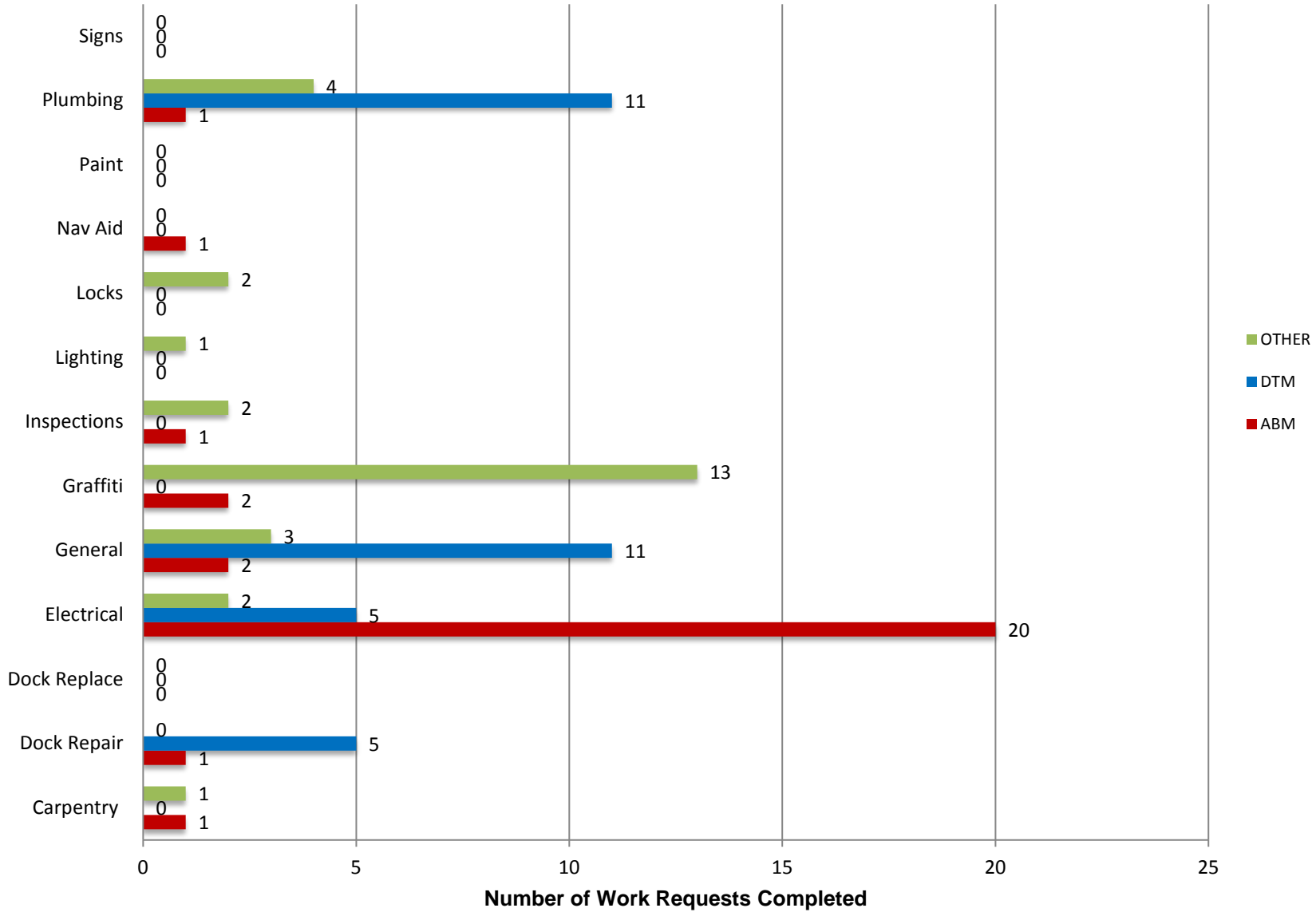
Marine Maintenance

Work Request Completed by Month



Marine Maintenance

Work Requests Completed by Location



PUMPOUT INSPECTION REPORT

Pump Out Location	Inspection Date				
	07/01/21	07/08/21	07/15/21	07/22/21	07/29/21
Gwy A, A	W	W	W	W	W
Gwy A, B	W	W	W	W	W
Parker's Public Dock, A	W	W	W	W	W
Parker's Public Dock, B	W	W	W	W	W
Parker's Public Dock, C	W	W	W	W	W
Dock 9	W	NW	NW	W	NW
Basin 6 South	W	W	W	W	W
Basin 6 North	W	W	W	W	W
Davie's Launch Ramp, A	W	W	W	W	W
Station 31, A	W	W	W	W	W
Station 31, B	W	W	W	W	W
Station 21	W	W	W	W	W
Basin 1, Gwy 2	W	W	W	W	W
Basin 1, Gwy 4	W	W	W	W	W
Basin 2, Gwy 8	W	W	W	W	W
Basin 2, Gwy 11	W	W	W	W	W
Basin 3, Gwy 16	W	W	W	W	W
Basin 3, Gwy 19	W	W	W	W	W
Basin 4, Gwy 28	W	W	W	W	W
Basin 4, Gwy 31	W	W	W	W	W
Basin 5, Gwy 33	W	W	W	W	W
Basin 5, Gwy 34	N/A	W	W	W	W

KEY
W = Working
NW = Not Working
N/A = Not Applicable

California, Los Angeles, Long Beach, Inner Harbor

August 2021

N 33° 46.3' / W 118° 12.6'

