

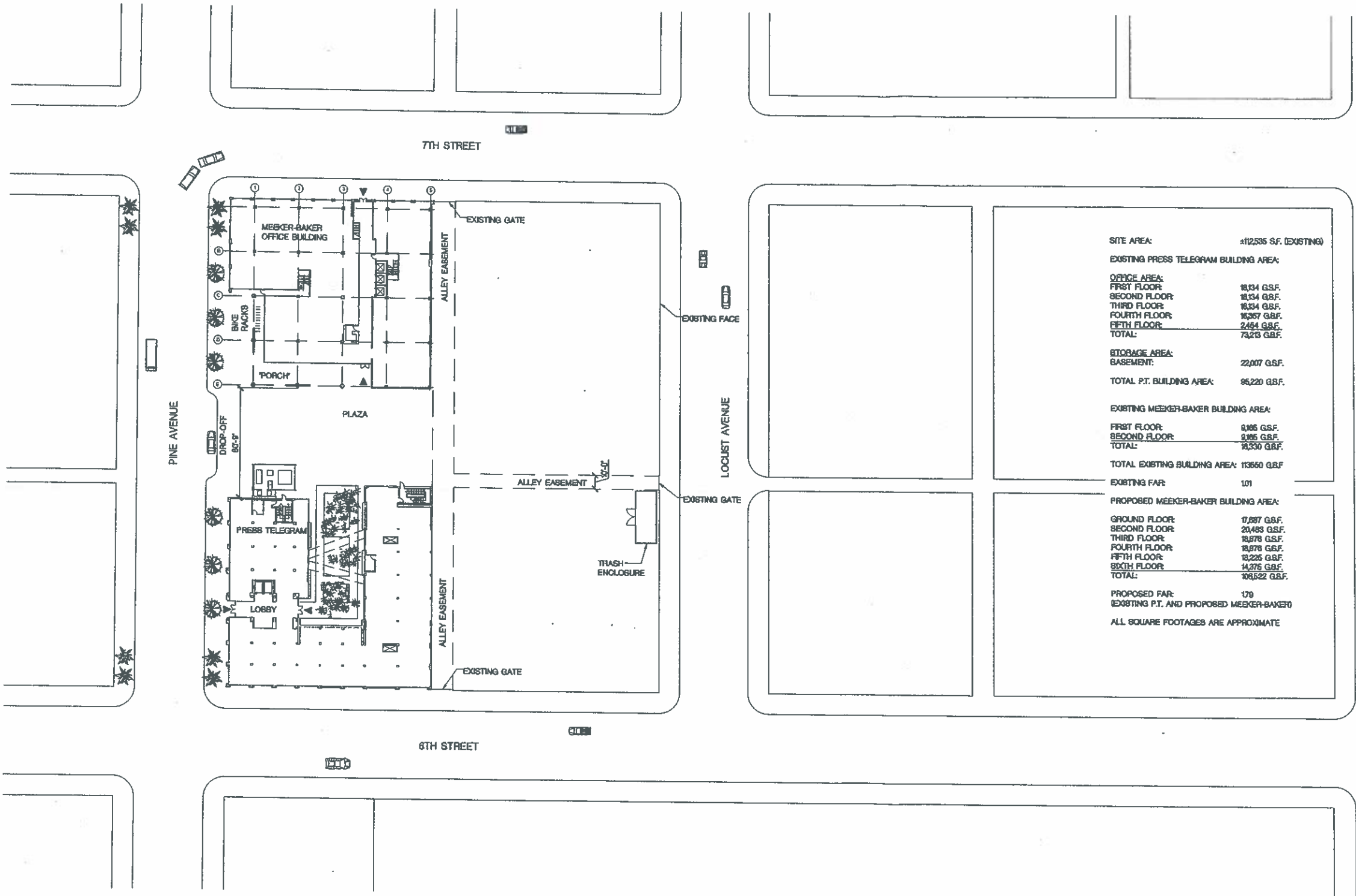
Meeker Baker Office

12044 - 03.23.2012

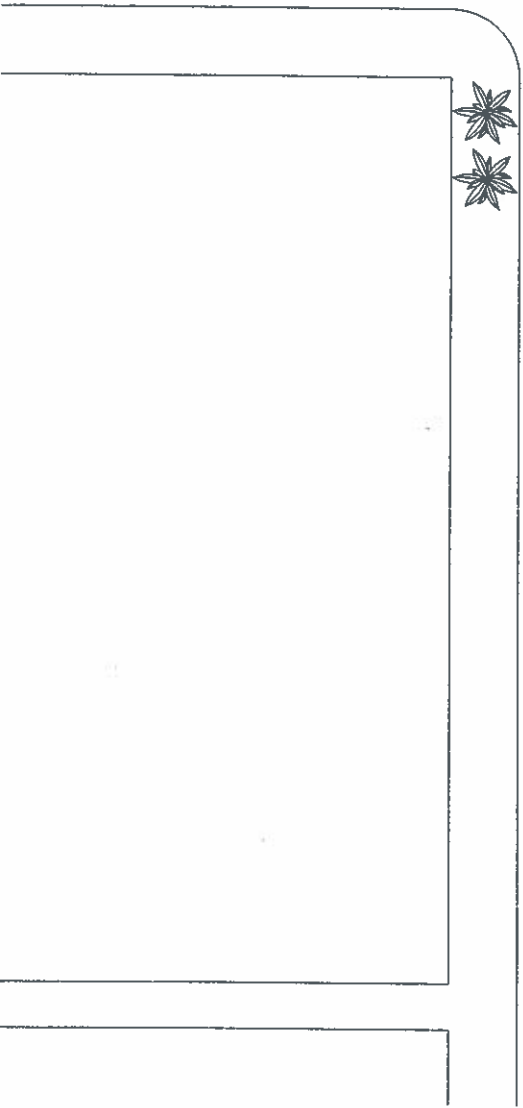
Meeker Baker

7th & Pine
Long Beach, California

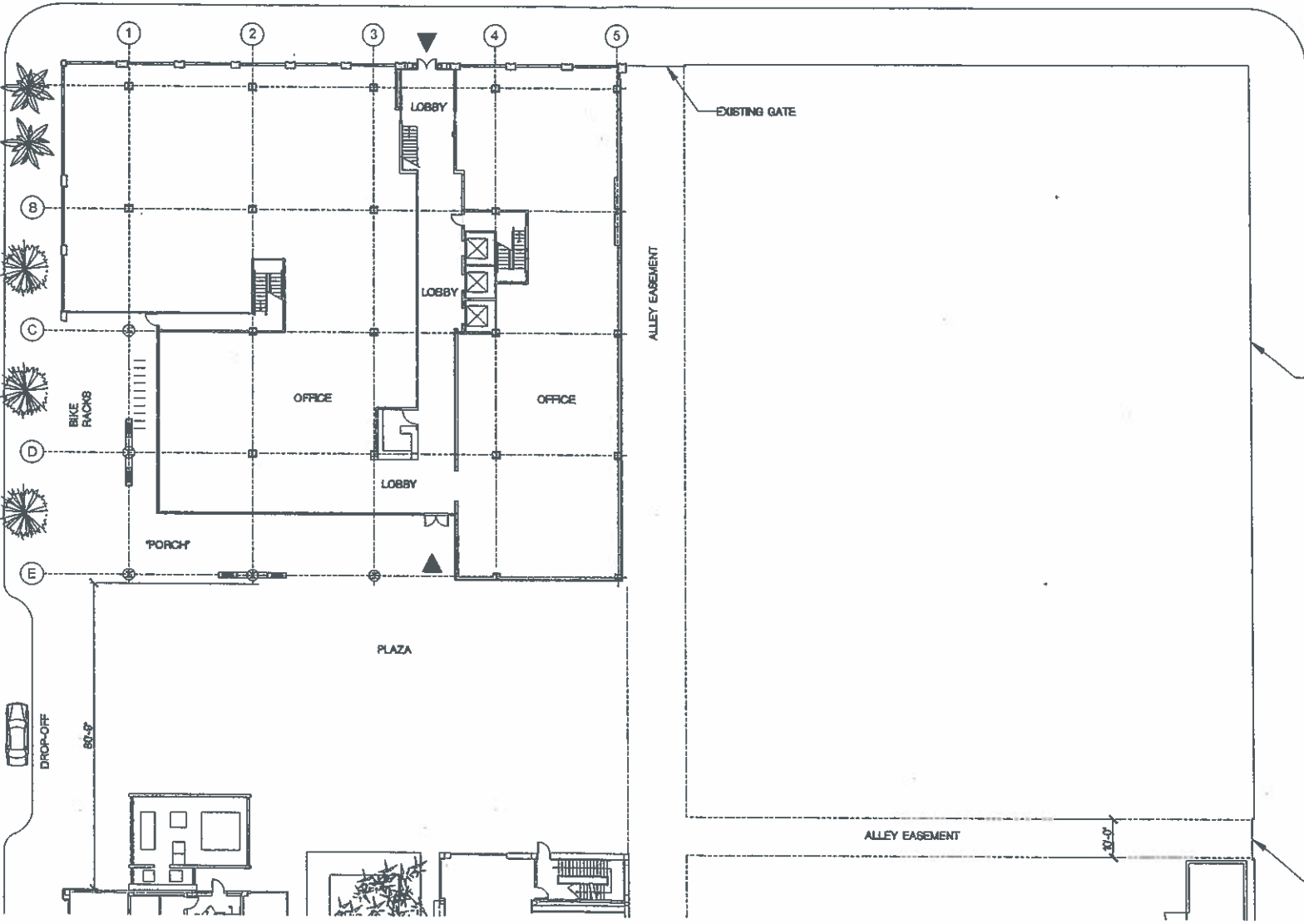
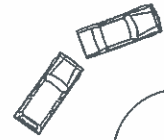




SITE AREA:	112,535 S.F. (EXISTING)
EXISTING PRESS TELEGRAM BUILDING AREA:	
OFFICE AREA:	
FIRST FLOOR:	18,134 G.S.F.
SECOND FLOOR:	18,134 G.S.F.
THIRD FLOOR:	18,134 G.S.F.
FOURTH FLOOR:	15,367 G.S.F.
FIFTH FLOOR:	2,464 G.S.F.
TOTAL:	73,233 G.S.F.
STORAGE AREA:	
BASEMENT:	22,007 G.S.F.
TOTAL P.T. BUILDING AREA:	95,220 G.S.F.
EXISTING MEEKER-BAKER BUILDING AREA:	
FIRST FLOOR:	9,165 G.S.F.
SECOND FLOOR:	9,165 G.S.F.
TOTAL:	18,330 G.S.F.
TOTAL EXISTING BUILDING AREA:	113,550 G.S.F.
EXISTING FAR:	101
PROPOSED MEEKER-BAKER BUILDING AREA:	
GROUND FLOOR:	17,887 G.S.F.
SECOND FLOOR:	20,483 G.S.F.
THIRD FLOOR:	19,878 G.S.F.
FOURTH FLOOR:	19,878 G.S.F.
FIFTH FLOOR:	13,225 G.S.F.
SIXTH FLOOR:	14,275 G.S.F.
TOTAL:	106,622 G.S.F.
PROPOSED FAR:	179
EXISTING P.T. AND PROPOSED MEEKER-BAKER	
ALL SQUARE FOOTAGES ARE APPROXIMATE	



7TH STREET



EXISTING GATE

ALLEY EASEMENT

EXISTING FACE

EXISTING GATE

PINE AVENUE

DROP-OFF

50'-0"

PORCH

PLAZA

OFFICE

OFFICE

LOBBY

LOBBY

LOBBY

ALLEY EASEMENT

50'-0"

A-2

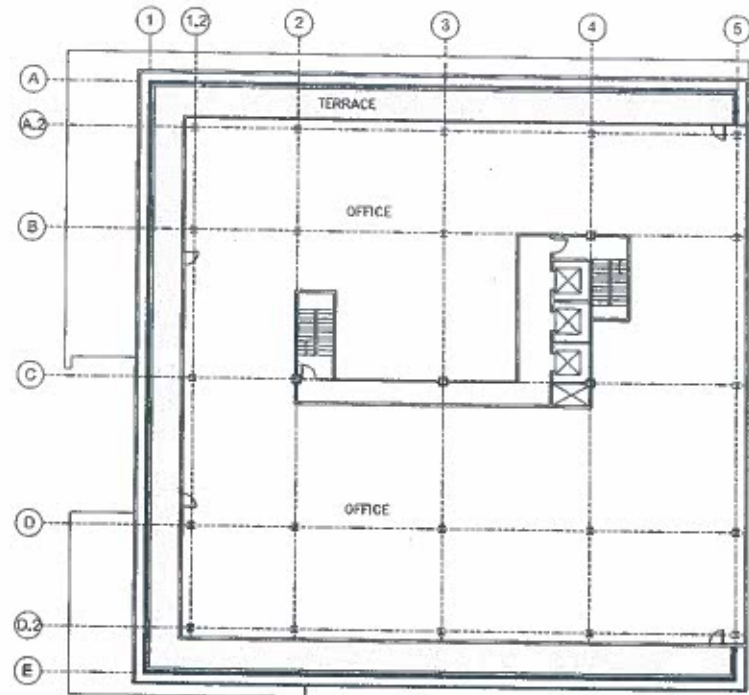
12044 - 03.23.2012

1st Floor SCALE: 1/16"=1'-0" 1

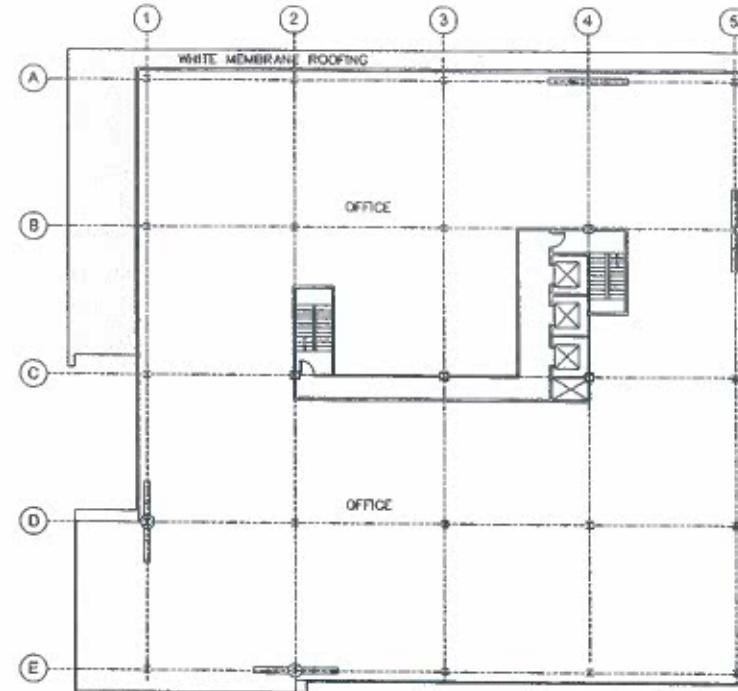
Meeker Baker

7th & Pine
Long Beach, California

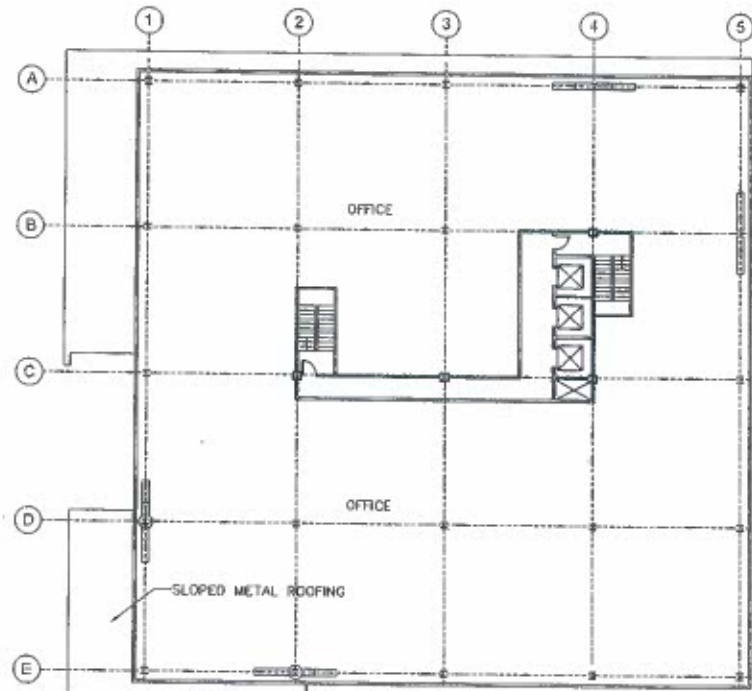




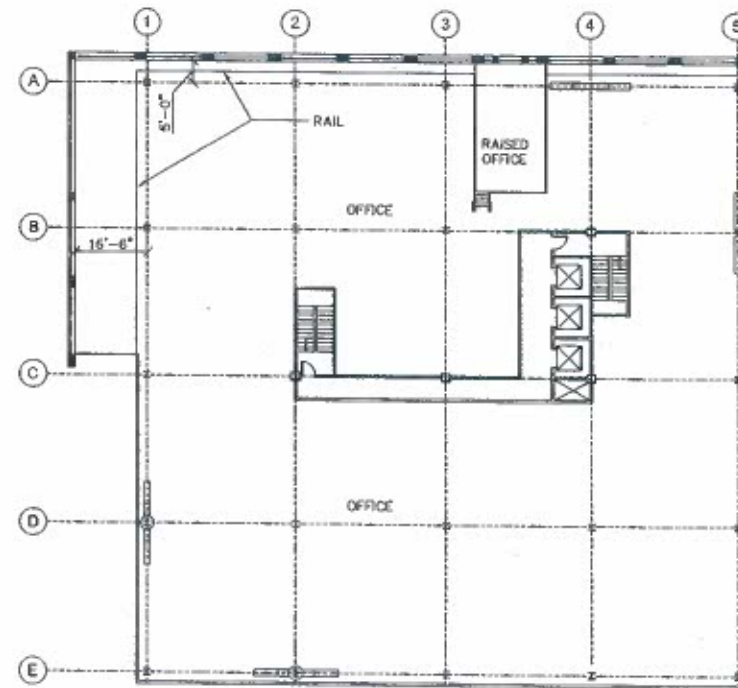
6th Floor SCALE: 1/16"=1'-0" 4



3rd / 4th Floor SCALE: 1/16"=1'-0" 2



5th Floor SCALE: 1/16"=1'-0" 3



2nd Floor SCALE: 1/16"=1'-0" 1

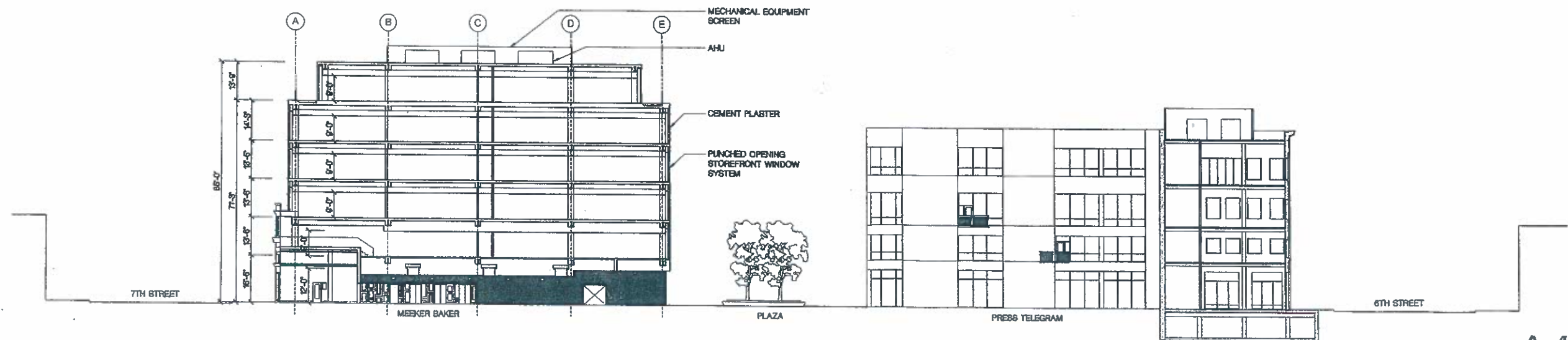
A-3

12044 - 03.23.2012

Meeker Baker

7th & Pine
Long Beach, California





12044 - 03.23.2012

0 16' 32' 48'

NORTH/SOUTH SECTION

SCALE: 1/16"=1'-0"

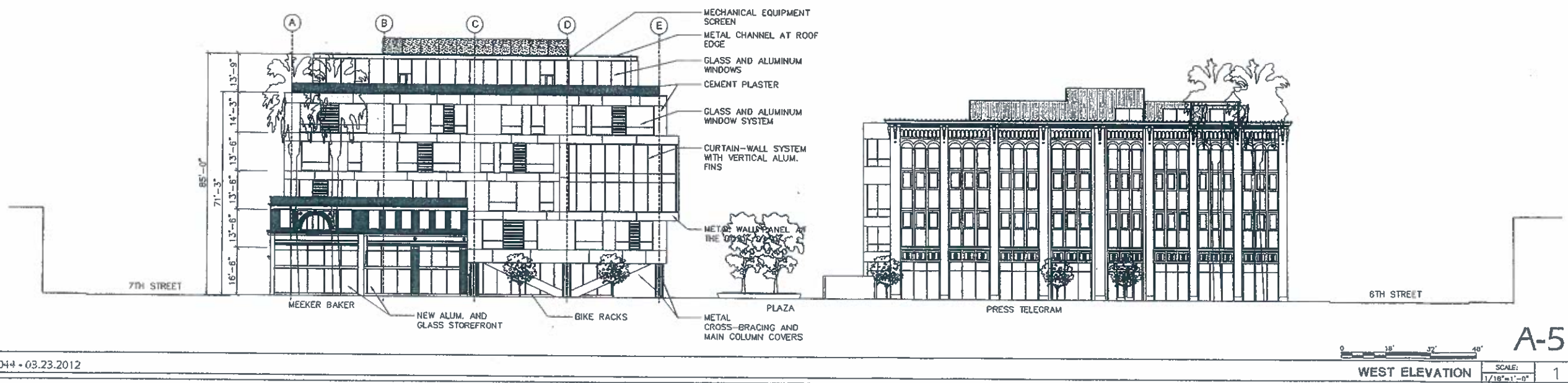
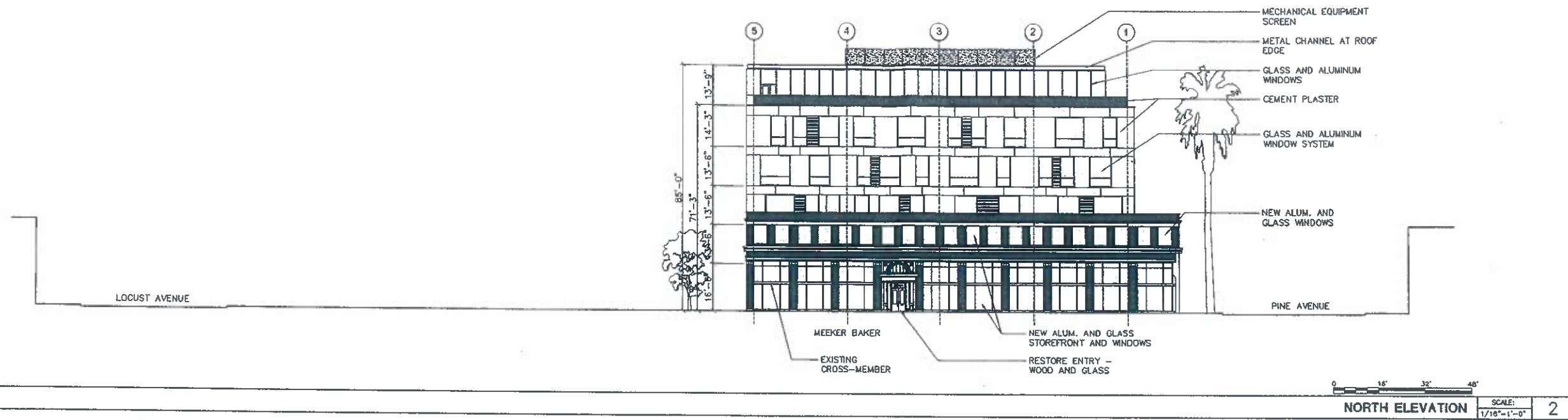
1

A-4

Meeker Baker

7th & Pine
Long Beach, California





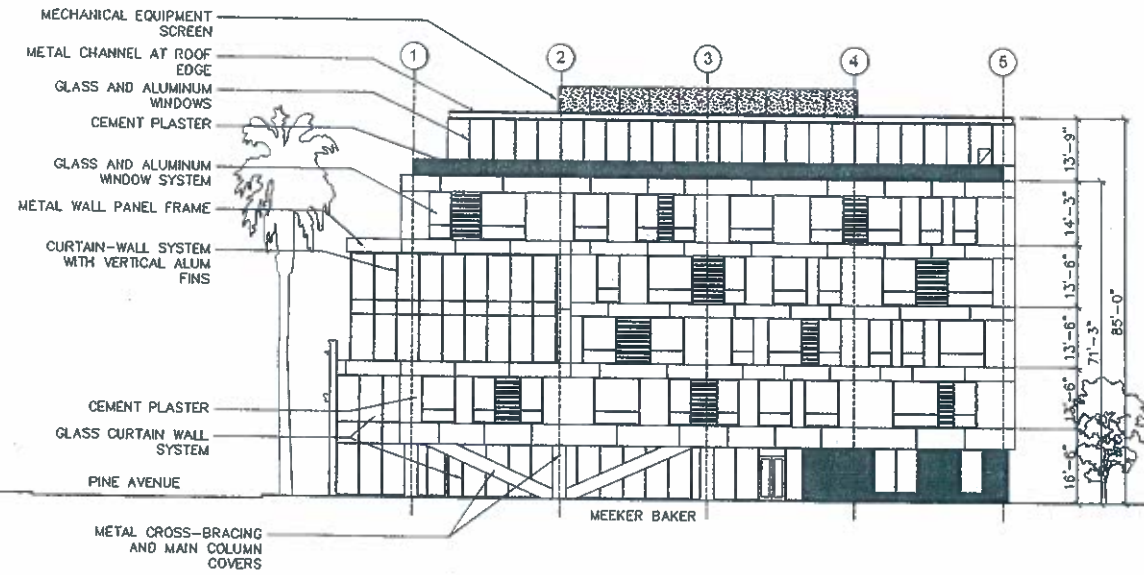
12044 • 03.23.2012

Meeker Baker

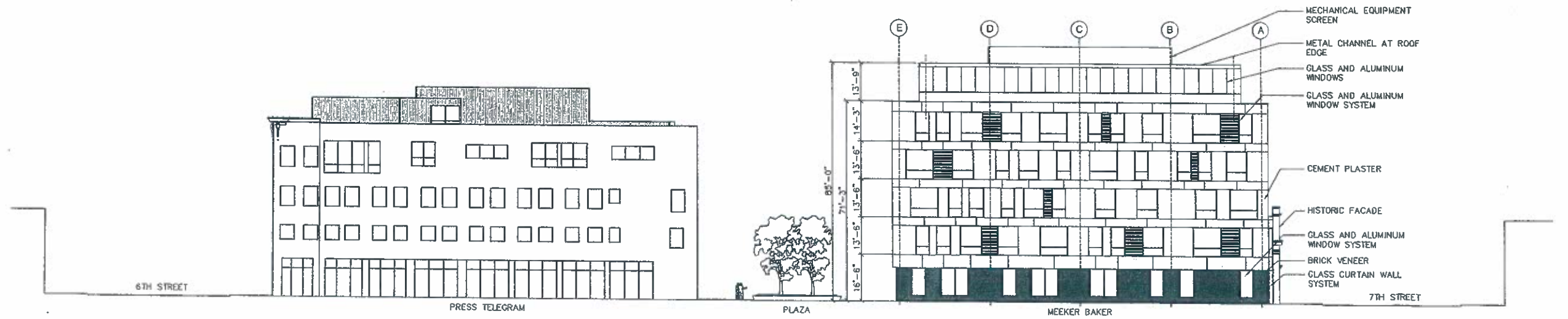
7th & Pine
Long Beach, California



A-5



0 16' 32' 48'
SOUTH ELEVATION SCALE: 1/16"=1'-0" **2**



0 16' 32' 48'
EAST ELEVATION SCALE: 1/16"=1'-0" **1**

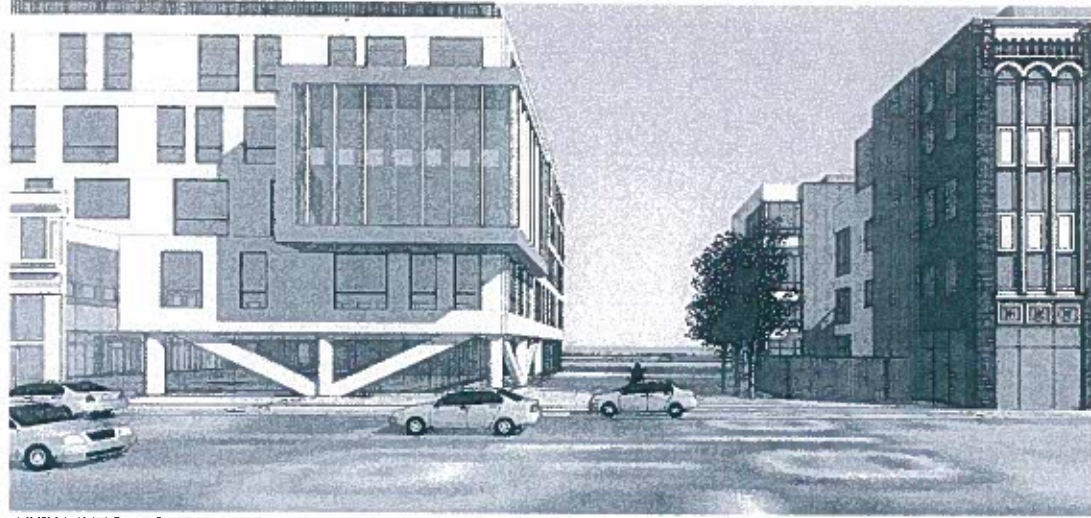
12044 - 03.23.2012

Meeker Baker

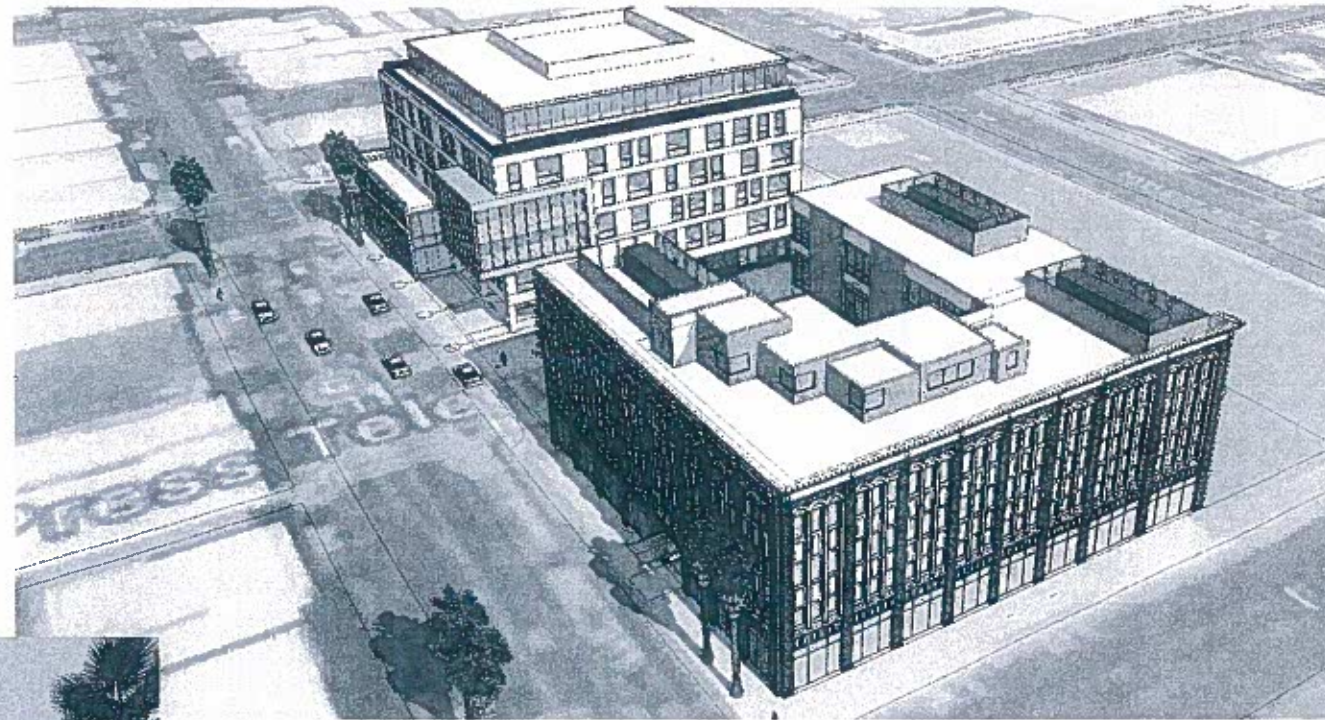
7th & Pine
 Long Beach, California



A-6



VIEW INTO COURTYARD



AERIAL VIEW AT PINE AND 6TH



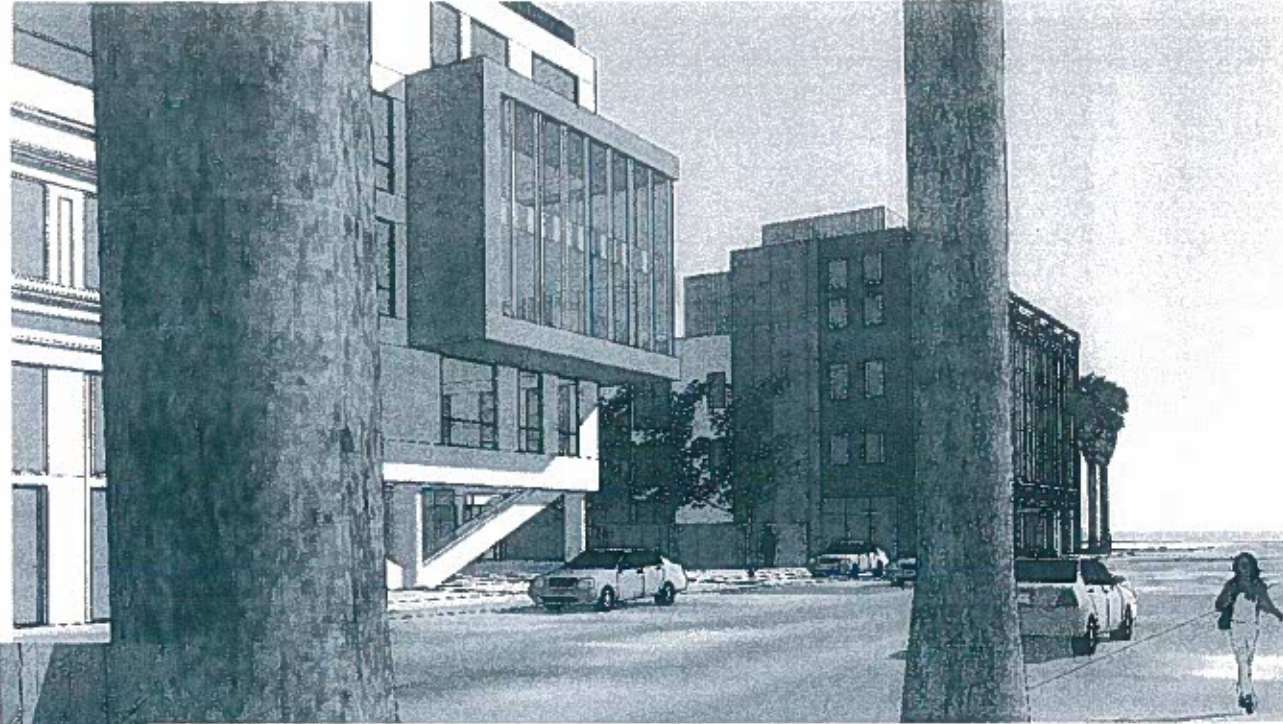
STREET VIEW AT 7TH AND PINE



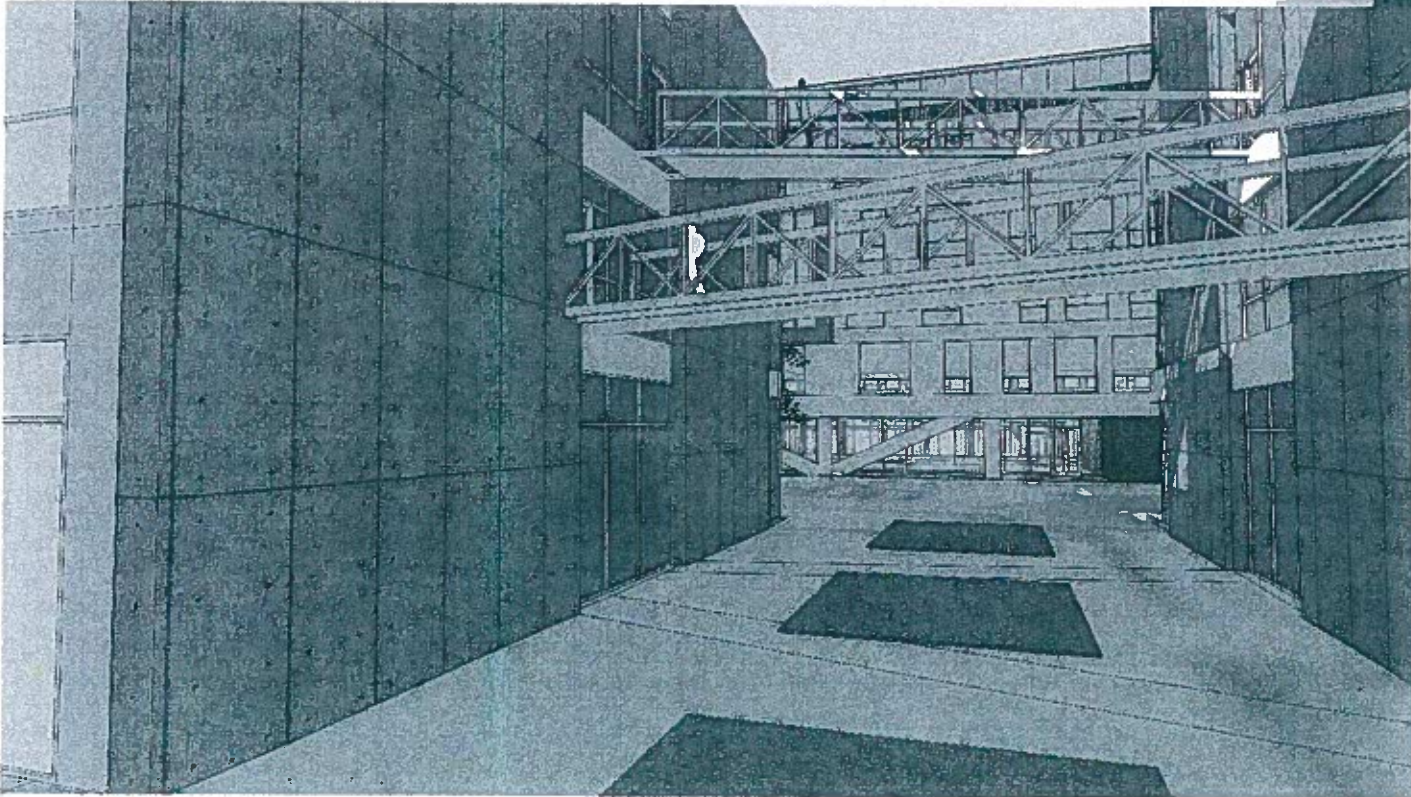
VIEW ALONG PINE



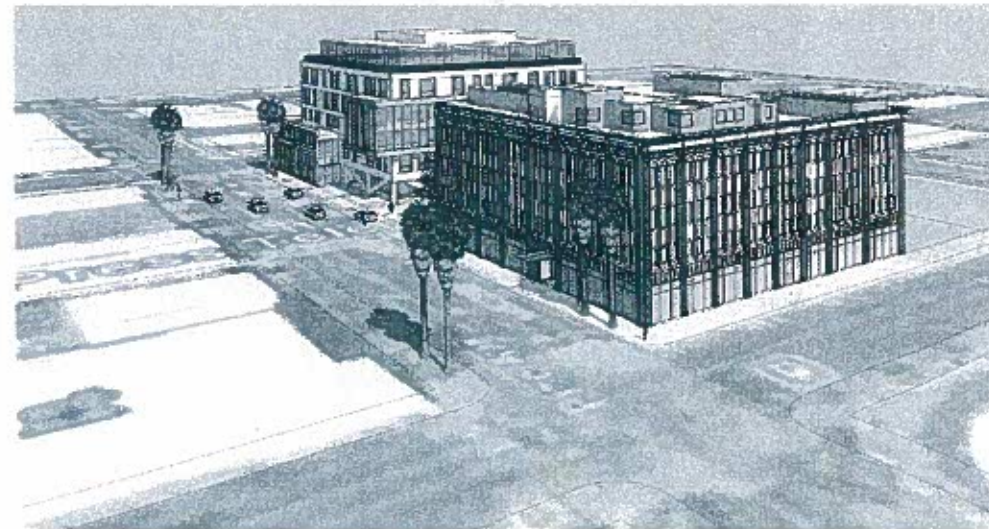
AERIAL VIEW OF MEEKER-BAKER CORNER



STREET VIEW LOOKING DOWN PINE



VIEW FROM PRESS TELEGRAM COURT



AERIAL VIEW ALONG PINE