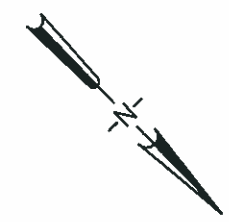


I:\ConMan\Cad\10310\dwg\Alamitos Bay Marina\Planning Fig 08-01-14\C-03.dwg, Plotted: Feb 25, 2008 - 8:55am



LEGEND

- AREA TO BE DREDGED
- PARKING AREA TO BE REPAVED (NO ISLANDS TO BE REMOVED)
- ALL EXISTING DOCKS AND GANGWAYS TO BE REPLACED. (NEW DOCK LAYOUT SHOWN)
- EXISTING RESTROOM TO BE DEMOLISHED
- NEW RESTROOM
- EXISTING RESTROOM TO BE REFURBISHED
- NEW BOAT HOIST



TranSystems
 6700 E. PACIFIC COAST HIGHWAY
 SUITE 201
 LONG BEACH, CA. 90803
 PHONE: 562-594-6974
 FAX: 562-594-6975

CONSULTANTS

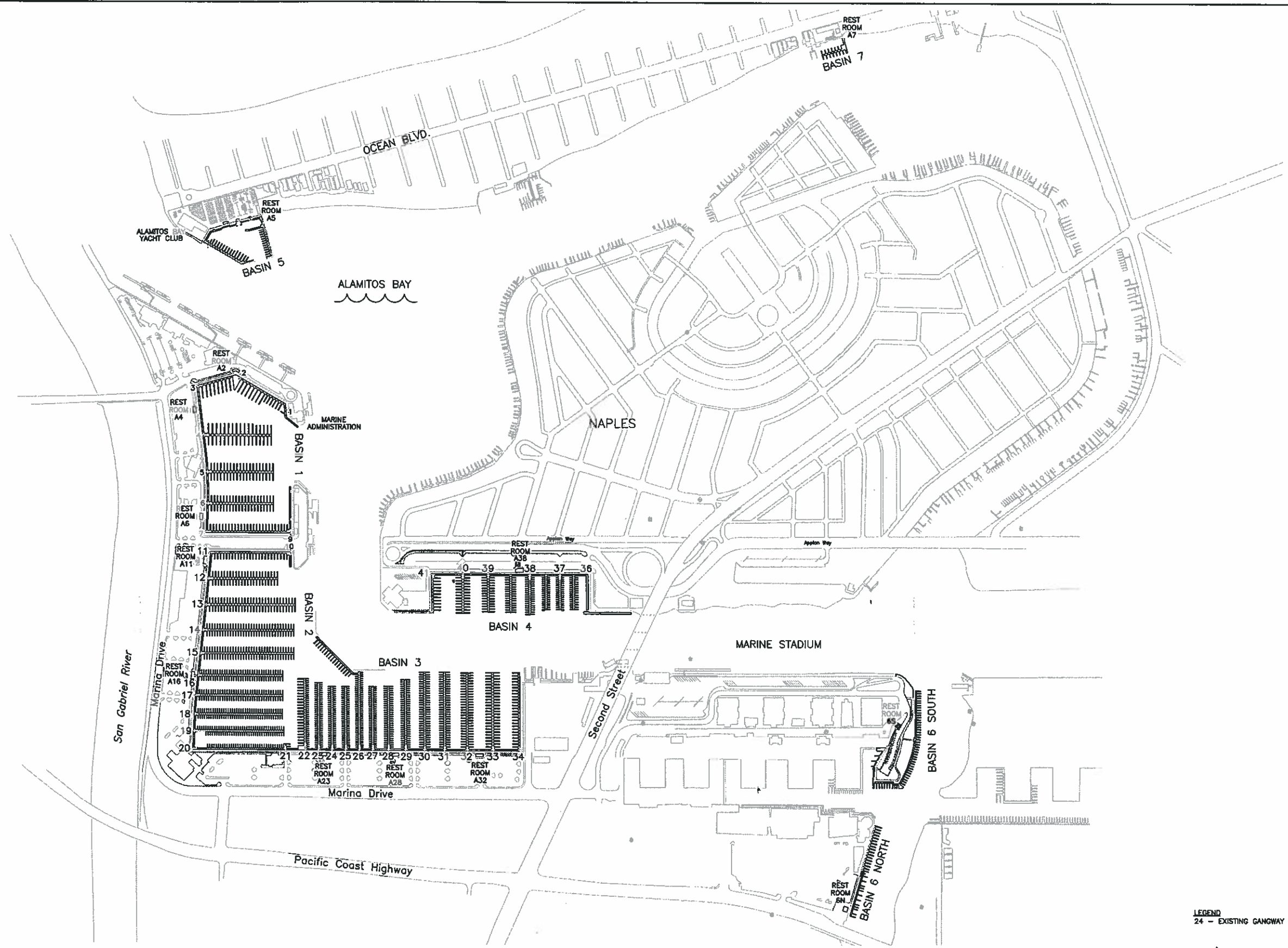
**CITY OF LONG BEACH
 ALAMITOS BAY MARINA
 MARINA
 REHABILITATION
 PROJECT**

MARK	DATE	DESCRIPTION

PROJ NO: P506060024
 SCALE: 1" = 80'
 DATE: 1/15/08
 DESIGNED BY:
 DRAWN BY: J.S.Y.
 CHECKED BY:

SHEET TITLE
PROJECT AREA

C-01



LEGEND
24 - EXISTING GANGWAY NUMBER



SCALE: 1" = 300'

Tran Systems
6700 E. Pacific Coast Highway Suite 201
Long Beach, California 90803
PHONE: 562-594-9374
FAX: 562-594-9375

CONSULTANTS:
URS
Cash & Associates

ALAMITOS BAY MARINA
MARINA REHABILITATION PROJECT
LONG BEACH, CALIFORNIA

REVISIONS:

MARK	DATE	BID DOCUMENTS	DESCRIPTION

PROJ NO: P50606024
SCALE: 1" = 300'
DATE: 10/01/07
DESIGNED BY: K.A.J.
DRAWN BY: J.S.Y.
CHECKED BY: C.D.D.

SHEET TITLE:
EXISTING LAYOUT

SHEET NO.
C-02

SHEET 2 OF 53

CONSULTANTS:

ALAMITOS BAY MARINA
 LANDSIDE IMPROVEMENT PROJECT
 LONG BEACH, CALIFORNIA

REVISIONS:	MARK	DATE	BID DOCUMENTS	DESCRIPTION

PROJ NO: P506060024
 SCALE: 1" = 20'
 DATE: 10/01/07
 DESIGNED BY:
 DRAWN BY: J.S.Y./D.G.
 CHECKED BY: C.O.D.

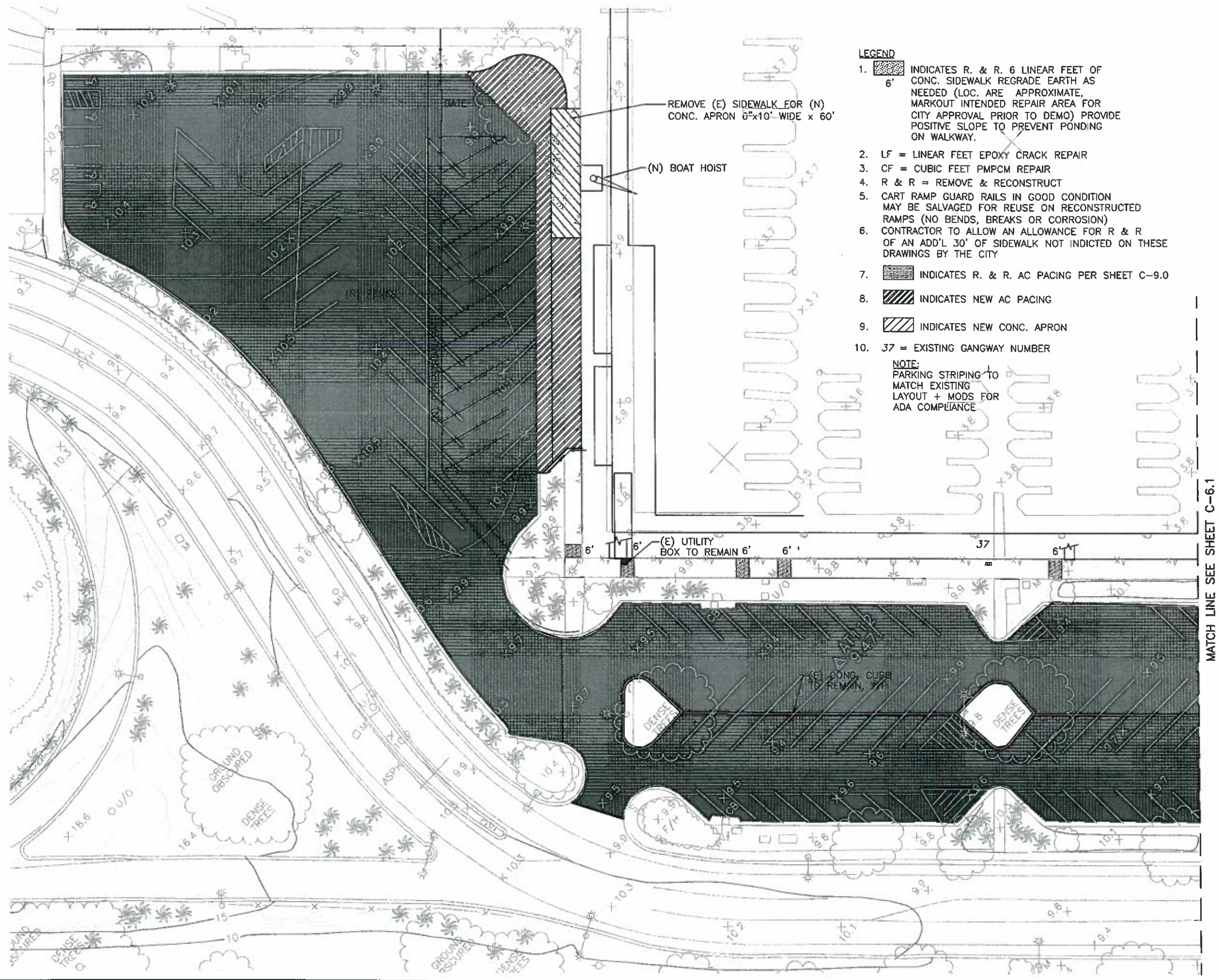
SHEET TITLE:
**DEMOLITION
 PLAN
 BASIN 4**

SHEET NO.
C-6.0
 SHEET 17 OF 49



LEGEND

- 6' INDICATES R. & R. 6 LINEAR FEET OF CONC. SIDEWALK REGRADE EARTH AS NEEDED (LOC. ARE APPROXIMATE, MARKOUT INTENDED REPAIR AREA FOR CITY APPROVAL PRIOR TO DEMO) PROVIDE POSITIVE SLOPE TO PREVENT PONDING ON WALKWAY.
- LF = LINEAR FEET EPOXY CRACK REPAIR
- CF = CUBIC FEET PMPCM REPAIR
- R & R = REMOVE & RECONSTRUCT
- CART RAMP GUARD RAILS IN GOOD CONDITION MAY BE SALVAGED FOR REUSE ON RECONSTRUCTED RAMPS (NO BENDS, BREAKS OR CORROSION)
- CONTRACTOR TO ALLOW AN ALLOWANCE FOR R & R OF AN ADD'L 30' OF SIDEWALK NOT INDICATED ON THESE DRAWINGS BY THE CITY
- INDICATES R. & R. AC PACING PER SHEET C-9.0
- INDICATES NEW AC PACING
- INDICATES NEW CONC. APRON
- 37 = EXISTING GANGWAY NUMBER

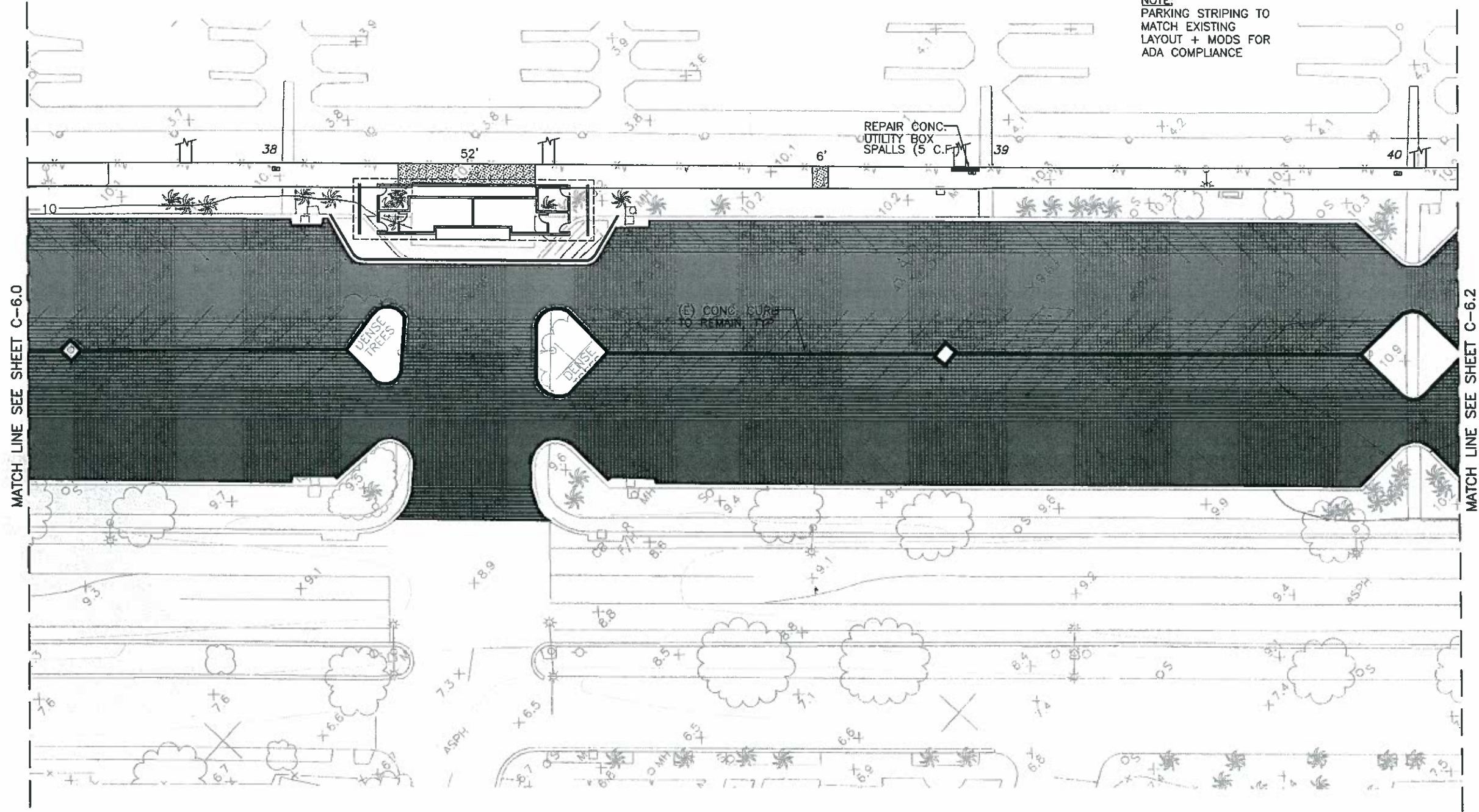
NOTE:
 PARKING STRIPING TO MATCH EXISTING LAYOUT + MODS FOR ADA COMPLIANCE



LEGEND

1.  INDICATES R. & R. 6 LINEAR FEET OF CONC. SIDEWALK REGRADE EARTH AS NEEDED (LOC. ARE APPROXIMATE, MARKOUT INTENDED REPAIR AREA FOR CITY APPROVAL PRIOR TO DEMO) PROVIDE POSITIVE SLOPE TO PREVENT PONDING ON WALKWAY.
2. LF = LINEAR FEET EPOXY CRACK REPAIR
3. CF = CUBIC FEET PMPCM REPAIR
4. R & R = REMOVE & RECONSTRUCT
5.  INDICATES R. & R. AC PAVING PER SHEET C-9.0
6. 39 = EXISTING GANGWAY NUMBER

NOTE:
PARKING STRIPING TO MATCH EXISTING LAYOUT + MODS FOR ADA COMPLIANCE



MATCH LINE SEE SHEET C-6.0

MATCH LINE SEE SHEET C-6.2

Trap Systems
8700 E. Pacific Coast Highway Suite 201
Long Beach, California 90803
PHONE: 562-494-8874
FAX: 562-594-8875

CONSULTANTS:

ALAMITOS BAY MARINA
LANDSIDE IMPROVEMENT PROJECT
LONG BEACH, CALIFORNIA

REVISIONS:	MARK	DATE	BID DOCUMENTS	DESCRIPTION



PROJ NO: P506060024
SCALE: 1" = 20'
DATE: 10/1/07
DESIGNED BY:
DRAWN BY: J.S.Y.J.G.
CHECKED BY: C.D.D.

SHEET TITLE:
**DEMOLITION PLAN
BASIN 4**

SHEET NO.
C-6.1
SHEET 18 OF 49

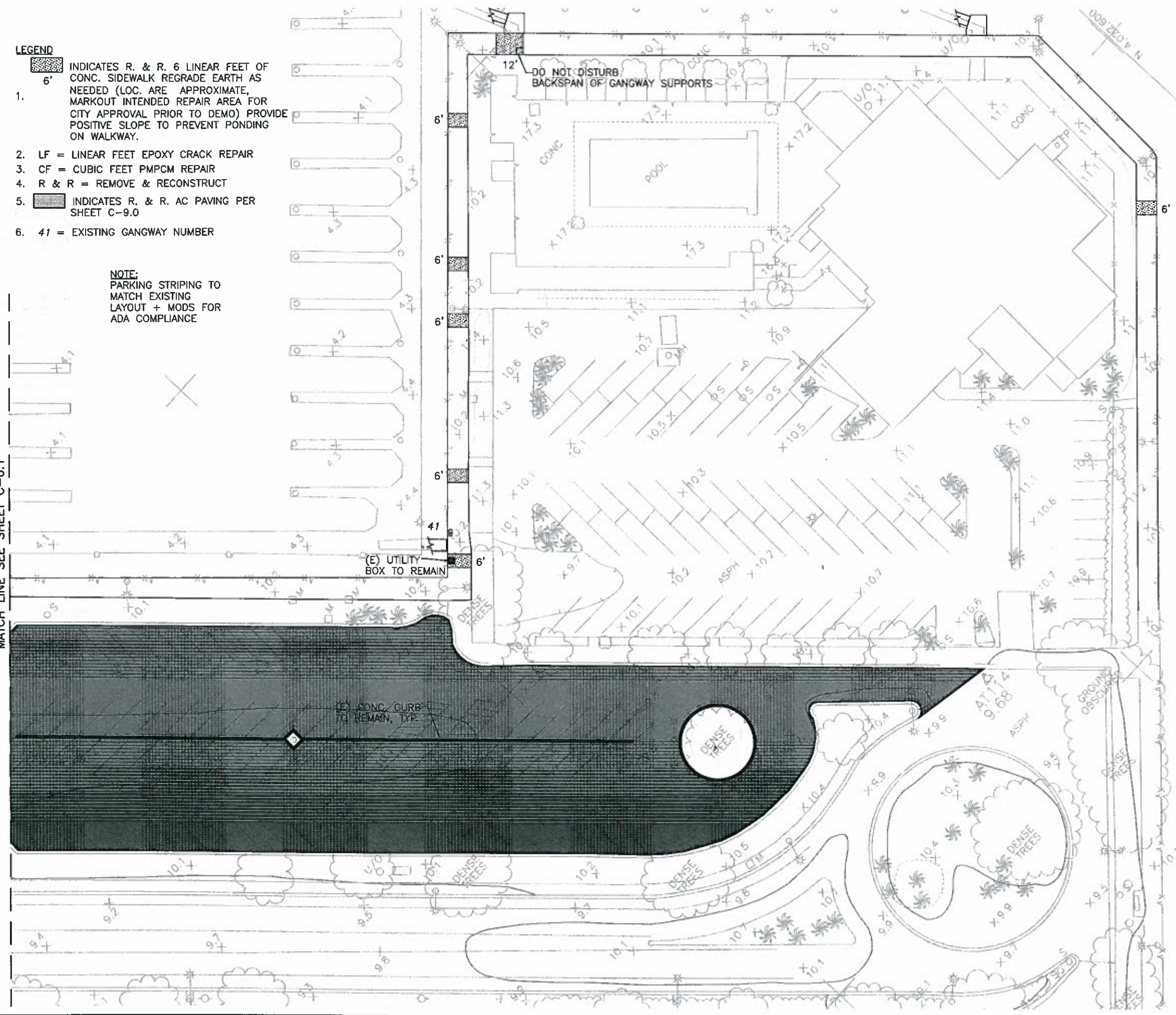
C:\ProgramData\CadSoft\AutoCAD 2007\Projects\Basin 4\10-1-07\Basin 4.dwg, Plotter: Feb 20, 2008, 8:52am

LEGEND

1.  INDICATES R. & R. 6 LINEAR FEET OF CONC. SIDEWALK REGRADE EARTH AS NEEDED (LOC. ARE APPROXIMATE, MARKOUT INTENDED REPAIR AREA FOR CITY APPROVAL PRIOR TO DEMO) PROVIDE POSITIVE SLOPE TO PREVENT PONDING ON WALKWAY.
2. LF = LINEAR FEET EPOXY CRACK REPAIR
3. CF = CUBIC FEET PMPCM REPAIR
4. R & R = REMOVE & RECONSTRUCT
5.  INDICATES R. & R. AC PAVING PER SHEET C-9.0
6. 41 = EXISTING GANGWAY NUMBER

NOTE:
PARKING STRIPING TO MATCH EXISTING LAYOUT + MODS FOR ADA COMPLIANCE

MATCH LINE SEE SHEET C-6.1



TransSystems
 6700 E. Pacific Coast Highway Suite 201
 Long Beach, California 90803
 PHONE: 562-594-6974
 FAX: 562-594-6975

CONSULTANTS:

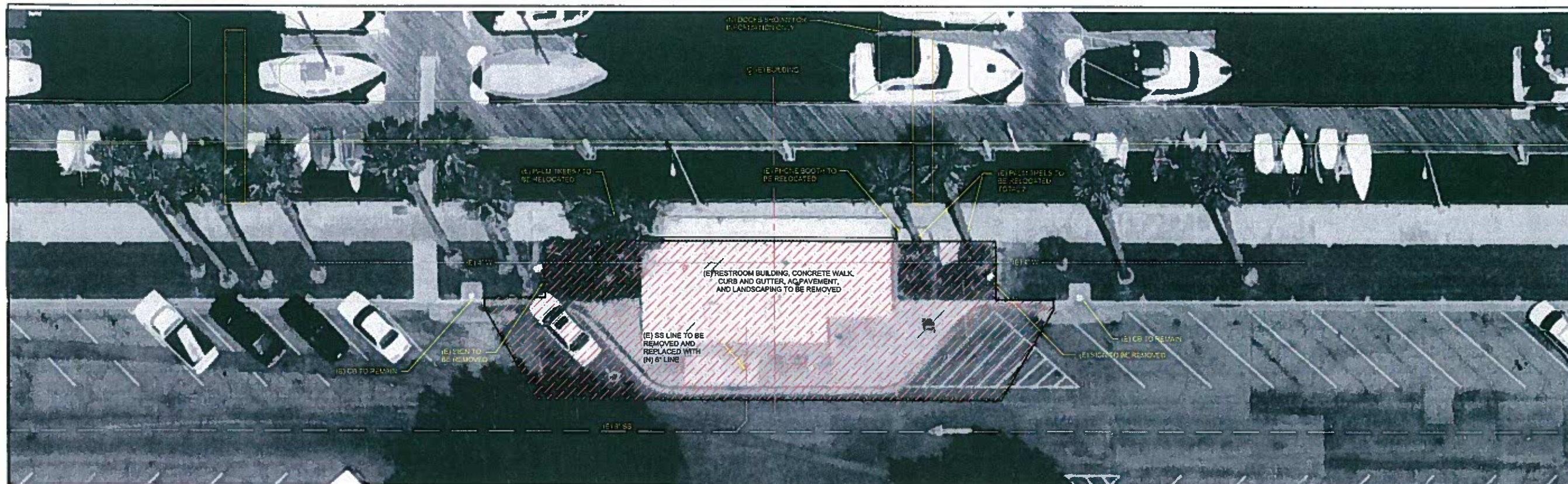
ALAMITOS BAY MARINA
 LANDSIDE IMPROVEMENT PROJECT
 LONG BEACH, CALIFORNIA

REVISIONS:	MARK	DATE	BID DOCUMENTS	DESCRIPTION

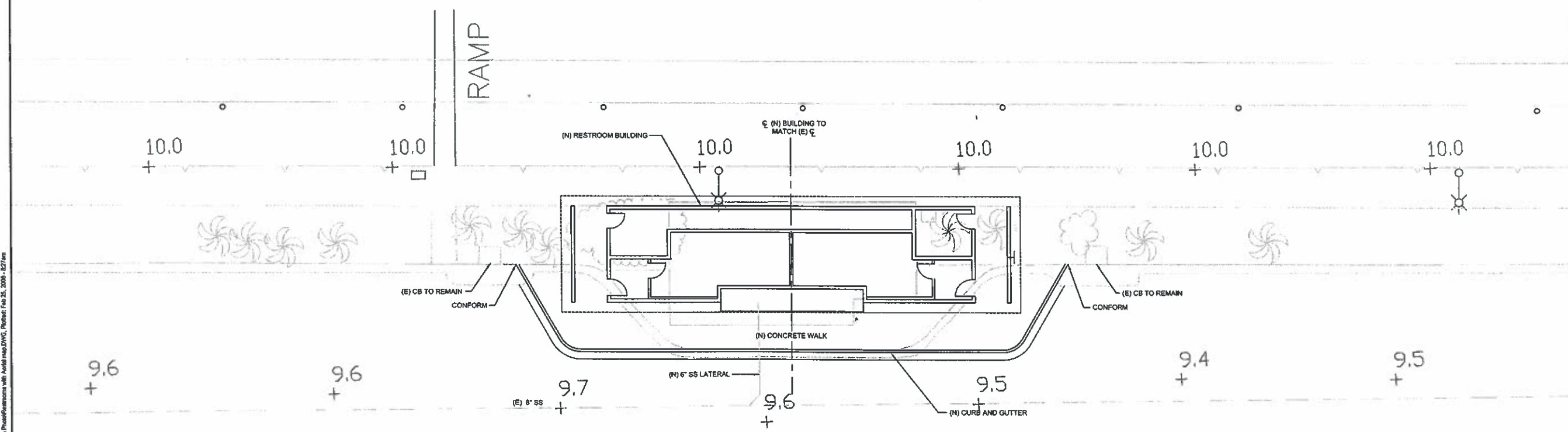
PROJ NO: P506060024
 SCALE: 1" = 20'
 DATE: 10/01/07
 DESIGNED BY:
 DRAWN BY: J.S.Y./D.G.
 CHECKED BY: C.D.D.

SHEET TITLE:
DEMOLITION PLAN BASIN 4

SHEET NO.
C-6.2
 SHEET 19 OF 49



DEMOLITION PLAN



NEW SITE PLAN

TranSystems
 4700 E. Pacific Coast Highway Suite 201
 Long Beach, California 90803
 PHONE: 562-594-8974
 FAX: 562-594-8975

REGISTERED PROFESSIONAL ENGINEER
 KEVIN A. JENKINS
 No. 20039
 CIVIL
 STATE OF CALIFORNIA
 Expires: 9/30/07

CONSULTANTS:

ALAMITOS BAY MARINA
 MARINA REHABILITATION PROJECT
 LONG BEACH, CALIFORNIA

REVISIONS:	MARK	DATE	DESCRIPTION

PROJ NO: P506060024
 SCALE: 1" = 10'
 DATE: 08/01/07
 DESIGNED BY: XXX
 DRAWN BY: J.S.Y.
 CHECKED BY: C.D.D.

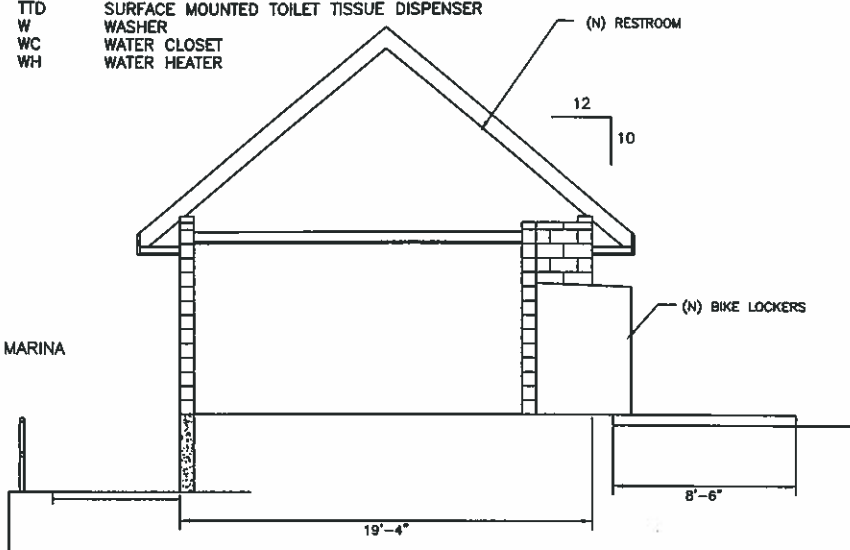
SHEET TITLE:
**BASIN 4 - RR A38
 SITE DEMOLITION
 AND NEW
 SITE PLANS**

SHEET NO.
R-4.0
 SHEET 5 OF 35

©2007 TranSystems, Inc. All rights reserved. This drawing is the property of TranSystems, Inc. and is not to be reproduced without written permission.

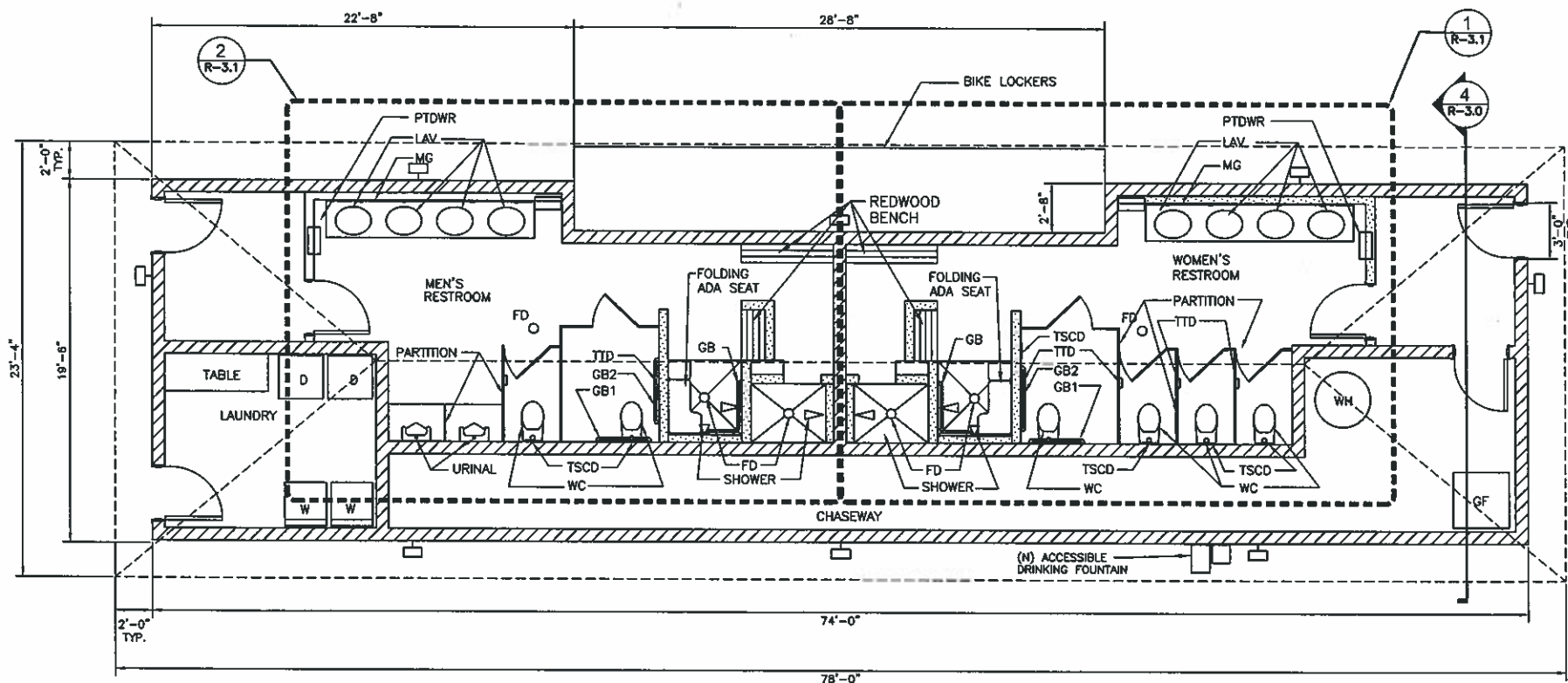
TOILET ACCESSORY ABBREVIATIONS:

- CMU CONCRETE MASONRY UNIT
- D DRYER
- FD FLOOR DRAIN
- GF GAS FURNACE EXCEPT BASIN 4
- GB1 36" GRAB BAR
- GB2 42" GRAB BAR
- LAV LAVATORY
- MG MIRROR, GLASS
- PTDWR PAPER TOWEL DISPENSER WITH WASTE RECEPTACLE
- TSCD SURFACE MOUNTED TOILET SEAT COVER DISPENSER
- TTD SURFACE MOUNTED TOILET TISSUE DISPENSER
- W WASHER
- WC WATER CLOSET
- WH WATER HEATER



SECTION
SCALE: 1/4" = 1'-0"

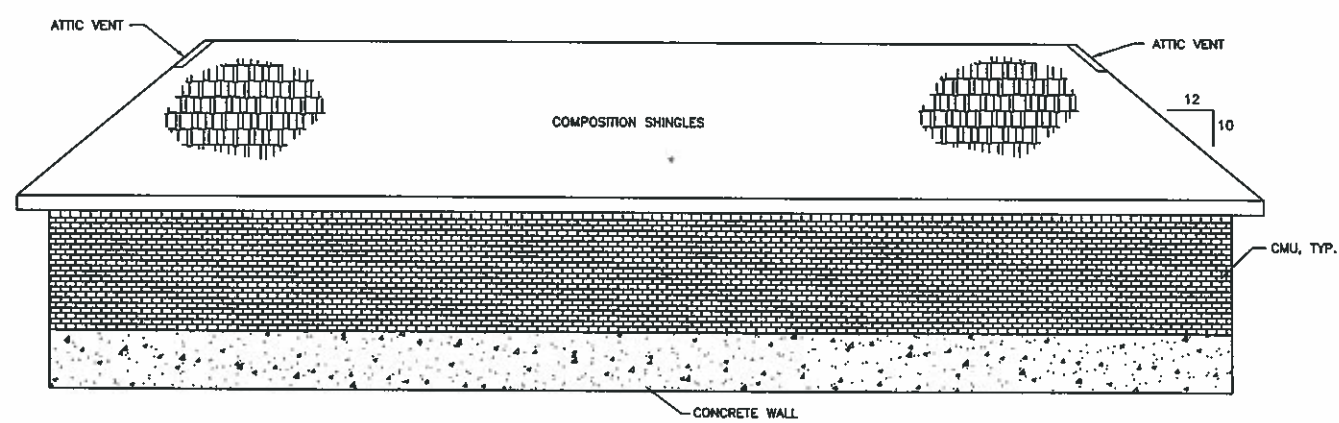
4



NEW RESTROOM PLAN
SCALE: 1/4" = 1'-0"

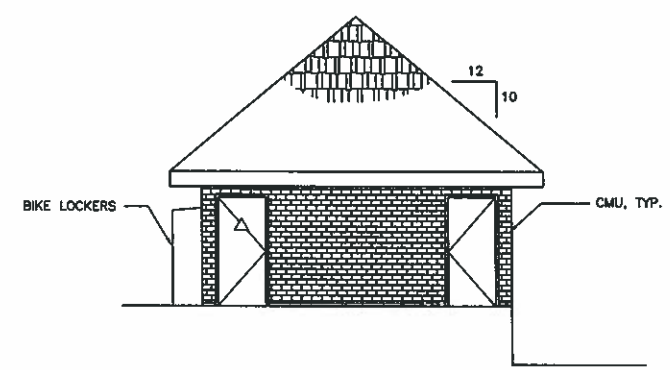
1

- CMU WALL
- STUD WALL



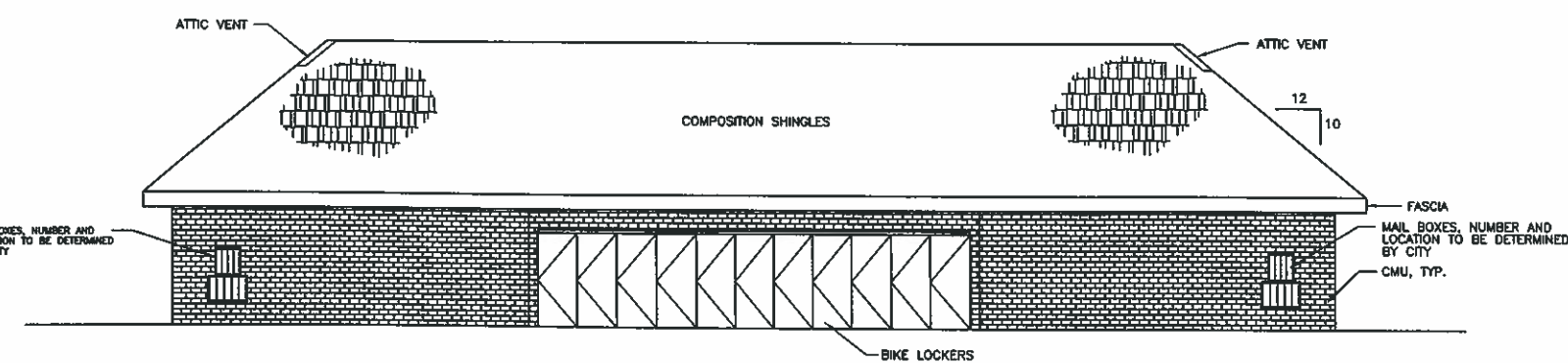
FRONT ELEVATION
SCALE: 3/16" = 1'-0"

5



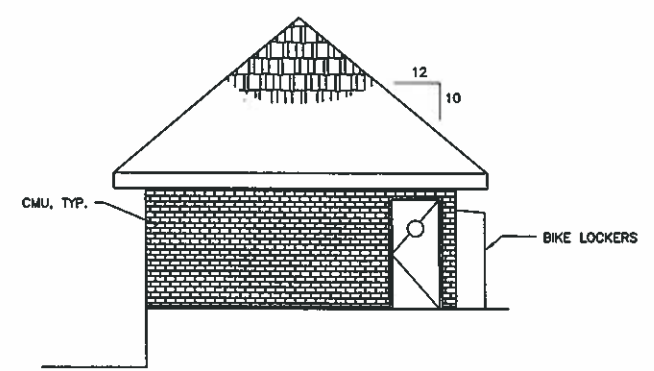
RIGHT ELEVATION
SCALE: 3/16" = 1'-0"

2



REAR ELEVATION
SCALE: 3/16" = 1'-0"

6



LEFT ELEVATION
SCALE: 3/16" = 1'-0"

3

TranSystems
9700 E. Pacific Coast Highway, Suite 201
Long Beach, California 90803
PHONE: 562-594-8974
FAX: 562-594-8975

CONSULTANTS:

ALAMITOS BAY MARINA
RESTROOM RECONSTRUCTION PROJECT
LONG BEACH, CALIFORNIA

REVISIONS:	MARK	DATE	DESCRIPTION

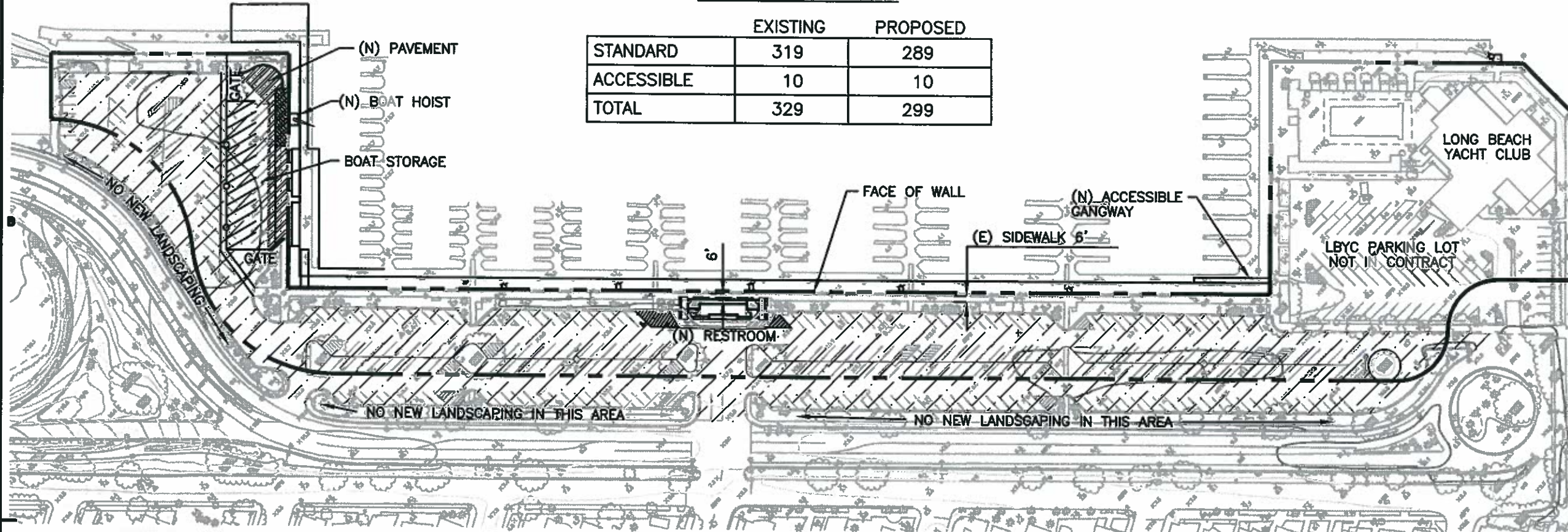
PROJ NO: PS06060024
SCALE: AS SHOWN
DATE: 10/01/07
DESIGNED BY:
DRAWN BY: J.S.Y.
CHECKED BY: C.D.D.

SHEET TITLE:
**NEW RESTROOM
PLAN, ELEVATIONS,
& SECTION**

SHEET NO.
R-3.0
SHEET 3 OF 40

PARKING SUMMARY

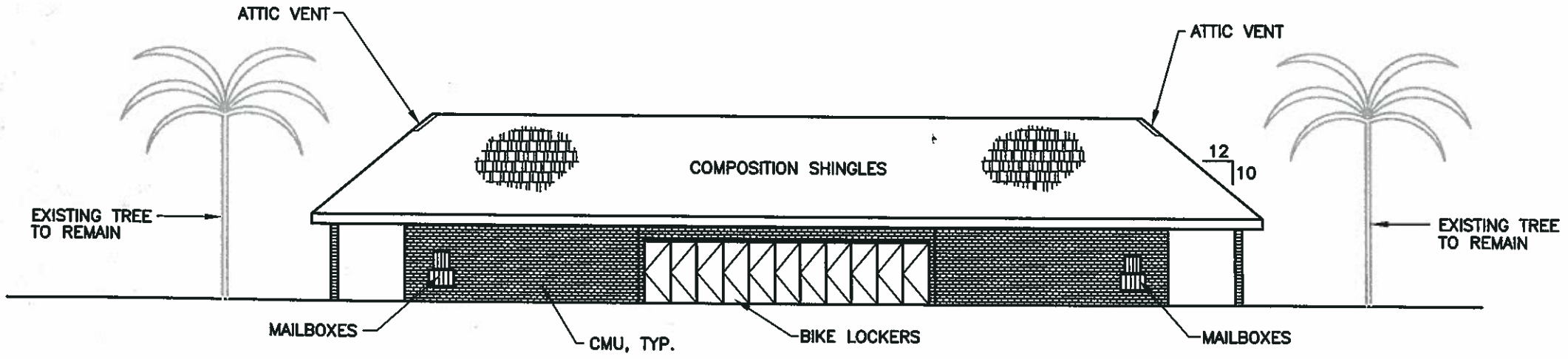
	EXISTING	PROPOSED
STANDARD	319	289
ACCESSIBLE	10	10
TOTAL	329	299



 EXISTING AC PAVEMENT TO BE WITH NEW AC PAVEMENT

SITE PLAN
SCALE: 1" = 120'

NOTE: PROPERTY LINE IS APPROXIMATE. LINE COMPILED FROM ASSESSOR'S MAP AND SEWER ATLAS.



RESTROOM ELEVATION
SCALE: 3/4" = 1'-0"



6700 E. PACIFIC COAST HIGHWAY
SUITE 201
LONG BEACH, CA. 90803
PHONE: 562-594-6974
FAX: 562-594-6975

CONSULTANTS

CITY OF LONG BEACH
ALAMITOS BAY MARINA
MARINA
REHABILITATION
PROJECT

MARK	DATE	DESCRIPTION

PROJ NO:	P506080024
SCALE:	AS SHOWN
DATE:	3/03/08
DESIGNED BY:	J.S.Y.
DRAWN BY:	J.S.Y.
CHECKED BY:	

SHEET TITLE
BASIN 4

PL-01

I:\ComMar\Cad\10310\dwg\Alamitos Bay Marina\Basin 4 Planning\Plan.dwg, Plotted: Mar 04, 2008 - 8:12am