



## Community Alternative 7

# Community Alternative 7



**NO I-710 Widening**



**Comprehensive Public Transit Element**



**Committed Zero Emission  
Freight Corridor**



**Public Private Partnership  
Employer Operated Freight System**



**River Improvements**



**Comprehensive Pedestrian and Bicycle Element**



**Community Benefits**

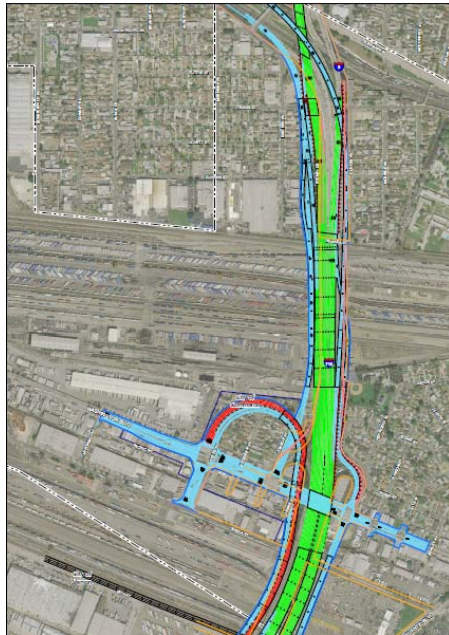
Expanded Open Space and other Community Enhancements

# No Widening

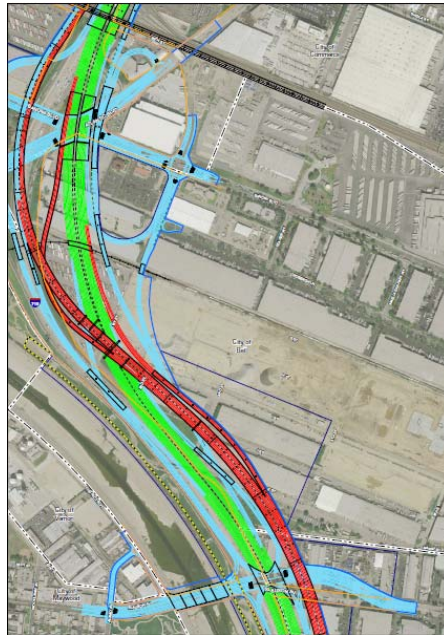
- Preserve needed resources
- Preserve local jobs
- Address mobility through public transit

# Important Resources

Commerce Houses



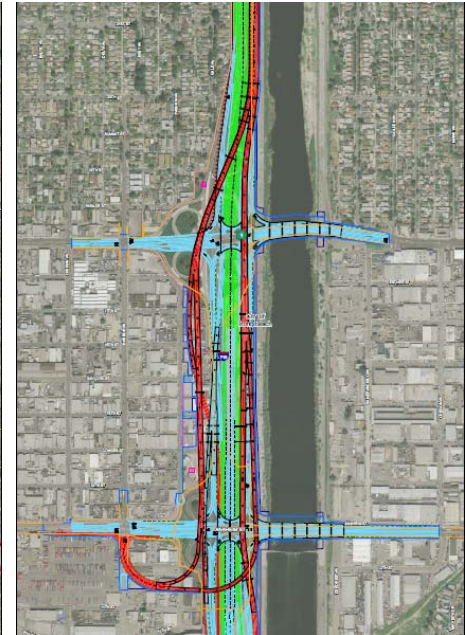
Bell Homeless Shelter



Senior Housing off Allondra



Multi-Service Center





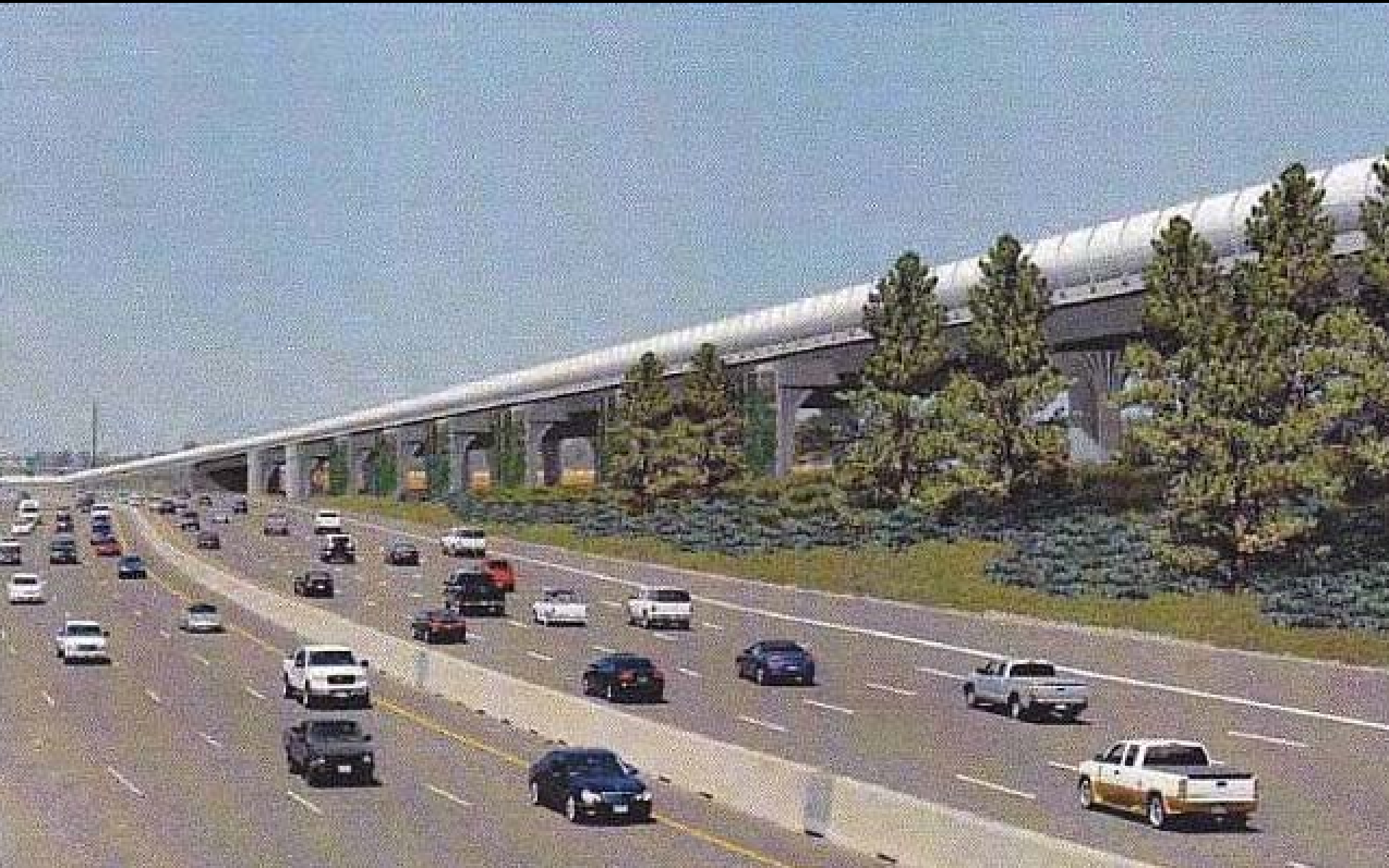
# Comprehensive Public Transit Element



# Mandatory Zero-Emission Corridor Through Public-Private Partnership



# Elevated Freight Corridor



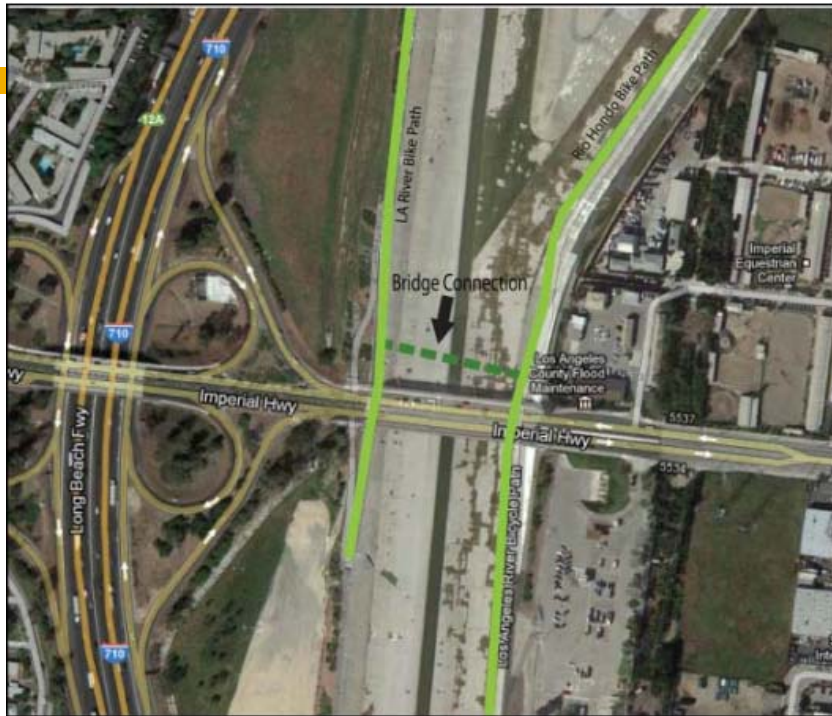


# LA River Improvements





# Comprehensive Pedestrian and Bicycle Element



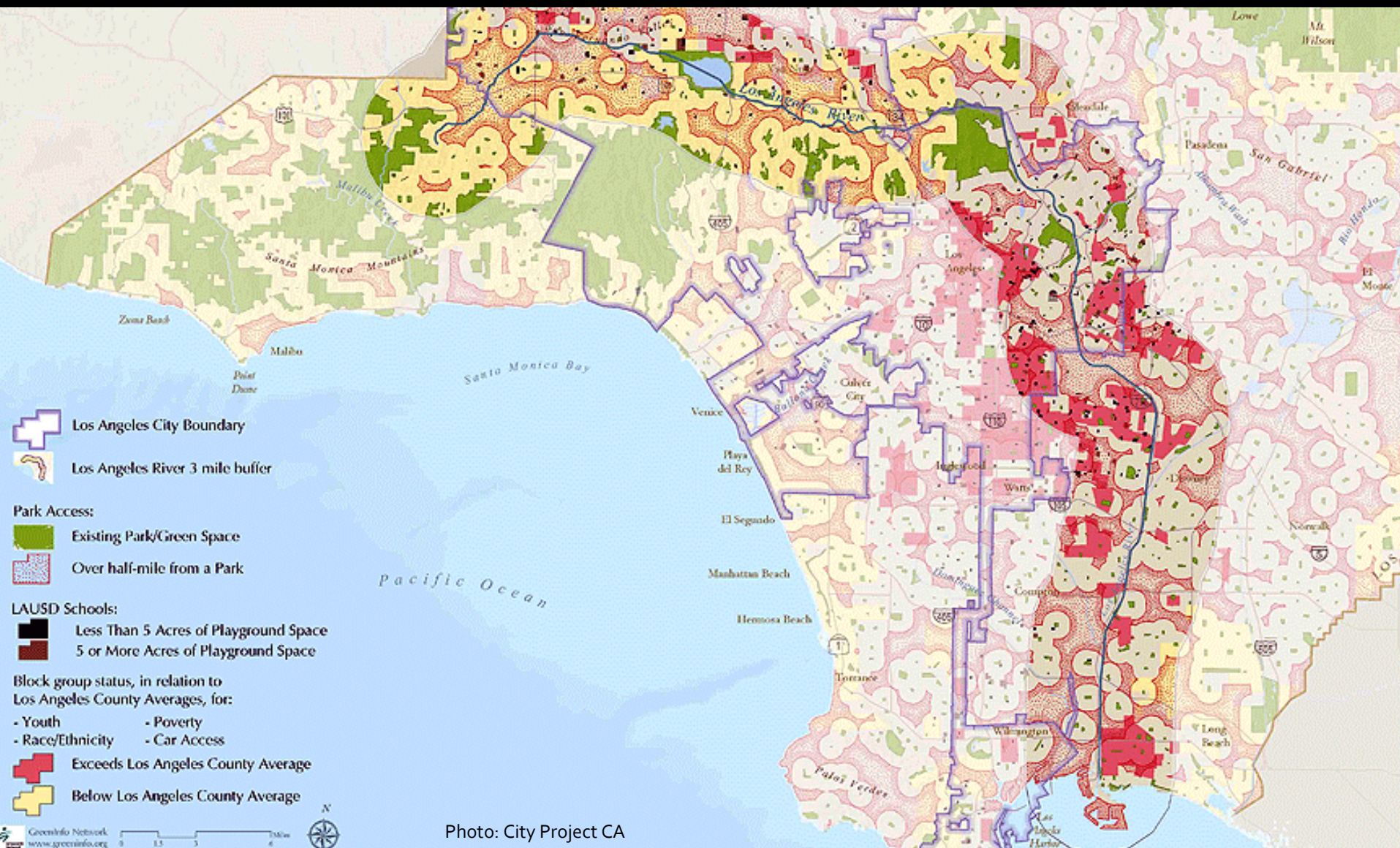
LA River and Rio Hondo Connection



LA River and Compton Creek Connection



# Community Benefits





# Community Benefits



LAPL





# During Construction

## Community Benefits

“Local Hire” and Project Labor Agreement,  
Parks, Schools and Home retrofits



**Free Public Transit  
During Construction**



**Zero/Near Zero Emission  
Construction Equipment**



**Comprehensive Pedestrian and Bicycle Safety Element**



**Dedicated funds set up for safety  
mitigation measures**

