



LONG BEACH AFRICAN AMERICAN COMMUNITY

A PROUD HERITAGE – Don't Divide Us

Most towns throughout America have a history of racism and Long Beach is no exception. Early Long Beach has been characterized as a city of almost puritanical values—a church-going citizenry that allowed no alcohol and practiced conservative ideals.

It was founded and settled by Bible belt, white, Midwesterners, conservative in their political and social views. It was famous for having the largest Bible study group in the nation and its draconian “purity” ordinances—making it illegal to wear a bathing suit that didn’t have skirts, sleeves or was too short or too tight.

Though the many churches in town preached tolerance and acceptance of blacks and other minorities, the truth was they did not want them living anywhere near them. “Property values going down,” was the most often cited reason for this exclusion, not outright racism. Deeds to property were later written to exclude blacks from purchasing homes in their community, though some did so in an outlying area close to the city called the “Negro District” (later Central Long Beach). From here they could find employment in the white community as cooks, maids, chauffeurs, and other positions whites did not want.

White settlers to Southern California neglected to see that the region was largely colonized by those with African blood. After Spain entered the slave trade in the 15th century, Africans, indigenous, and European blood mingled and many of those with mixed blood were recruited into the Spanish armed forces as conquistadores.

In Northern California, African Americans, many still slaves, helped garner the gold that brought more and more immigrants to the Golden State. Whereas Northern California was pro Union during the Civil War, the Southland was a hotbed of Southern sympathizers and not the most welcoming of places for African Americans to settle. It would not be until the 1880s that a small number of African Americans began to migrate to Southern California. From 188 African Americans in Los Angeles County, the number increased to 1,817 in 1890; to 2,841 in 1900—21 of them living in Long Beach. 1880 was also the year that the community later to be known as Long Beach came into being.

**Authored by:
Claudine Burnett**

Published 2021

“I hope the information presented here will increase your knowledge of Long Beach and Southern California history and the struggles experienced by African Americans.”

**AFRICAN AMERICANS
IN LONG BEACH
AND SOUTHERN
CALIFORNIA:
*A History***



****The corner of MLK & PCH
designated as a cornerstone, historic
landmark for the African American
community.**



Historic Black Community Points of Significance:

- 2 LBUSD School (Bobbie Smith and Mary Dell Butler)

- 4 Parks (McBride Teen

Center, MLK Park, Rosa

Parks Park, Office Daryl

Black Park, NAACP Park)

- 15 large Black Churches

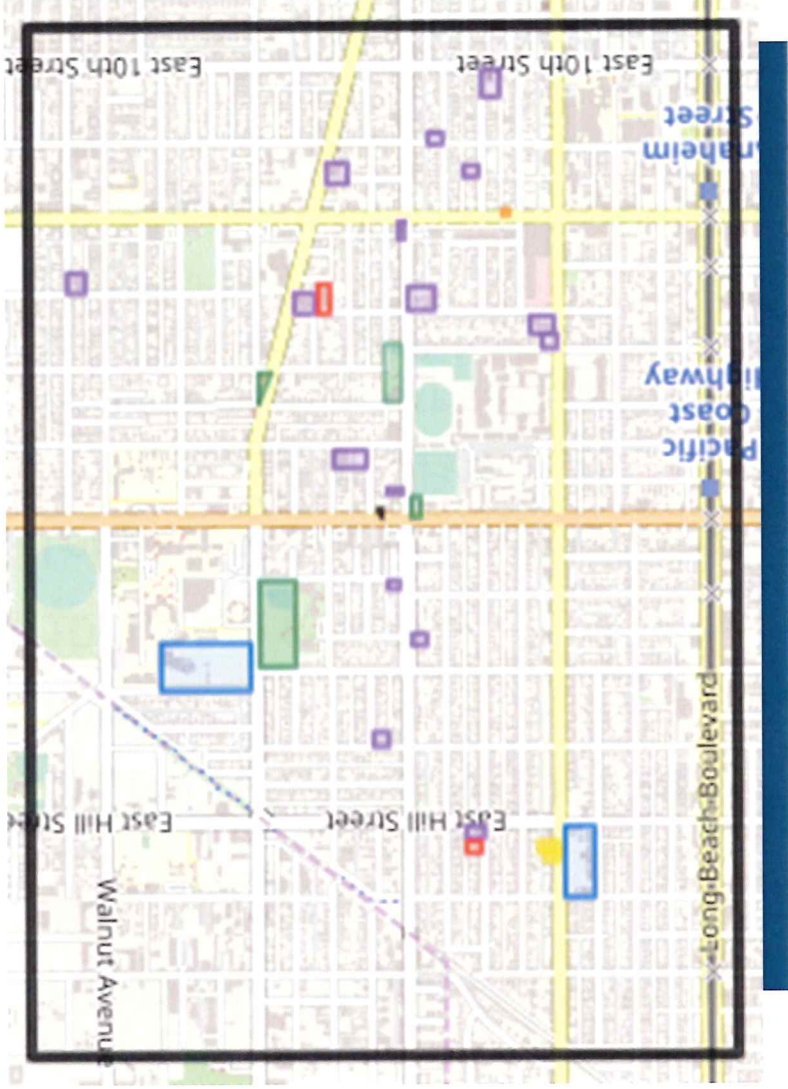
- 2 over 110 years old

- 4 over 77 years

- 7 over 65 years

- Favored home of the African American Cultural Center

✓	HERITAGE PARK AREA	✓	VIP RECORDS
✓	PAUL R WILLIAMS DESIGN	✓	MARY DELL BUTLER SCHOOL
✓	BOBBIE SMITH ELEMENTARY	✓	LOVE UNLIMITED BC
✓	GRACE MEMORIAL BC	✓	GREATER HARVEST COGIC
✓	ST VESSEL CME	✓	GRANT CHAPEL AME
✓	ROSA PARKS PARK	✓	MGBRIDE PARK
✓	KING PARK	✓	RECTANGLES FOLDER 2
✓	PAN AF ART 2	✓	COLCOTHA TRINITY BC
✓	NEW HOPE SR HOMES	✓	NEW HOPE BC
✓	LBCL	✓	1ST PROVIDENCE BC
✓	NEW LIBERTY BC	✓	WHITE ROSE COGIC
✓	ST JOHN BAPTIST	✓	MYRTLE AVE COGIC
✓	COGSEL PARKING	✓	COGSEL MEMORIAL
✓	HERITAGE PARK	✓	ST MARK BAPTIST
✓	2ND BAPTIST CHURCH		





Family & Community



Our Churches

The Role of the Black Church in Creating Change

Historically the black church has been a place for creating individual, systemic, and political change within the Black community. From its emergence in the late 18th century to its present-day relevance, the Black church has and will always serve as a safe haven for African Americans, a place to worship God together, and a place where we are motivated to rebuild our communities. You can guarantee that on Sunday between the hours of 8 a.m. (early morning service) to 3 p.m. (afternoon service) there will be a large population of Blacks attending church.

Pastors in the Black church wield much influence in our community. They fill us up with wisdom, knowledge, and of the Word of God. Our pastors pray with and for us, provide resources and tools, even visit us when we are sick. Our pastors continue to serve as our “elected” spiritual representatives.

Est.	Central Area Black Churches	Address
1903	1 st African American Mission Church formed, later became Christ 2 nd Baptist Church	
1907	Christ Second Baptist	1471 MLK Ave., 90813
1911	Grant African Methodist Episcopal (AME)	1129 Alamos Ave, 90813
1943	New Hope Baptist	1160 E. New York St, 90813
1944	St Mark Baptist	1703 Lemon Avenue, 90813
1945	White Rose Church of God in Christ (COGIC)	1001 E. Anaheim St., 90813
1945	St. Vessel Colored Methodist Episcopal (CME)	1953 MLK Ave, 90813
1952	St John Baptist	741 E. 10 th St, 90813
1956	The Greater Harvest COGIC	1144 Olive Ave, 90813
1950s	Golgotha Trinity	1630 E. 14 th St, 90813
1961	Antioch	Original-1535 Gundry Ave, 90813 Current-350 Pine Ave, 90802
1962	1 st Providence	801 E. Hill St, 90806
1960s	New Liberty	2091 Olive Ave, 90806
1960s	Myrtle Avenue Church of Christ	1076 Myrtle Ave, 90813
2000s	Love Unlimited	1760 MLK Ave, 90813
2000s	Grace Memorial Baptist Church	1021 E. 19 th St, 90806

1903 Black mission started in Long Beach by First Baptist, LA which later became Christ 2nd Baptist

**Christ Second Baptist
Church, Est. 1907**



**New Hope Baptist,
Est. 1943**



**St. Mark Baptist
Church,
Est. 1944**



**Grant Chapel AME
Est. 1911**





Proposed home for the AACCLB

Pan African Art Studio

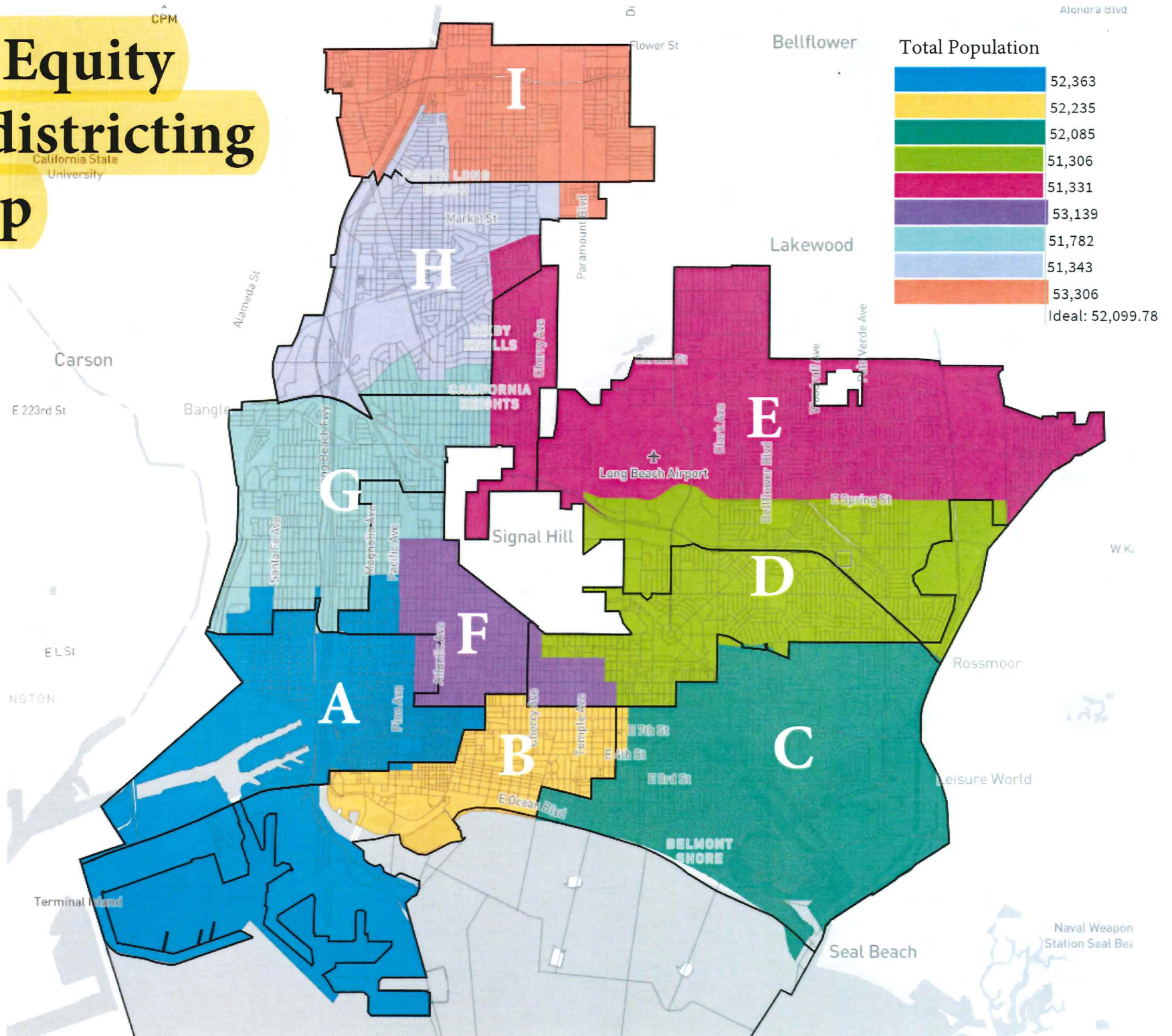


FORGOTTEN IMAGES

Arts & Culture



LB Equity Redistricting Map



Dear commissioners,

I wanted to respectfully ask the committee to dismiss the following maps since they are NOT in compliance with City Charter Amendment criterion number 1 keeping neighborhoods together:

Map 61852, 47248, 49564, and 61537

I have provided the neighborhood maps that are going to be broken apart into different districts by these proposed maps.

Map 61852 proposes Loynes as the district border. Loynes south of PCH turns into a residential street that ends with a bike lane and houses in front of you. 100 feet away, there is Elliot Street that was proposed to be the district border in all previous maps. This map breaks the exact same neighborhood that we discussed here last Wednesday

Map 47248 cuts into Alamitos Heights by cutting south from 7th street into residential Santiago and Colorado streets again taking part of the our neighborhood including Colorado Lagoon into another district.

Map 61537 cuts into the black neighborhood around Atlantic and Burnet Streets without even using a street. It just miraculously divides the neighborhood into 2 districts.

Map 49564 cuts into the neighborhood that we know as "the hole" located off of Loynes and Studebaker, this is a small neighborhood and this map proposes to break the hole in 2 districts and also break College Estate Park into 2 districts.

I respectfully ask the committee to move forward with IRC 1

Thank you for listening to every voice in Long Beach

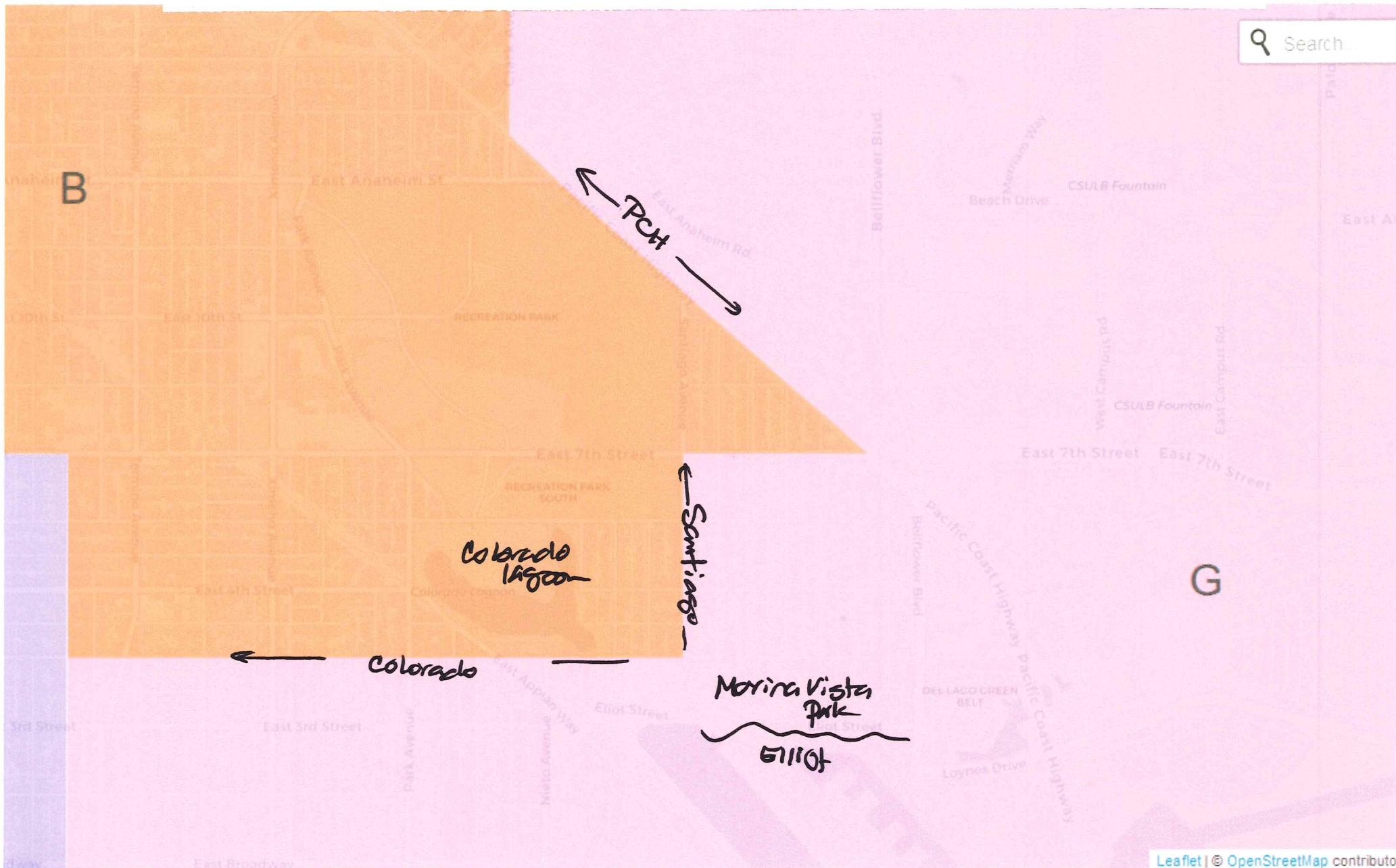
Parastou Tehrani, Bay Harbor resident

DOES NOT KEEP NEIGHBORHOODS TOGETHER

Map 61852 proposes Loynes to be the district border. Loynes south past PCH turns into a residential street that ends with a bike lane and houses in front of you. 100 feet away on your right, there is Elliot Street that was proposed to be the district border in all previous 5 maps. This map breaks the exact same neighborhood that we discussed here last Wednesday



Map 47248 cuts into our neighborhood by cutting south from 7th street into residential Santiago Street and Colorado. Again taking part of our neighborhood including Colorado Lagoon to another district



Map 61537 cuts into a black neighborhood without even using a street. It just miraculously cuts the neighborhood in 2 districts.

<https://mapit.longbeach.gov/longbeach/pubmaps/modified-draft-61537.html>



Search...

no street here

no street here

Leaflet | © OpenStreetMap contributor

search



72°F



Map 49564 cuts into the neighborhood we know as "the hole" located off of Loynes and Studebaker and College Park Estate and separate the neighborhood into 3 districts

Search

ROSSMOOR

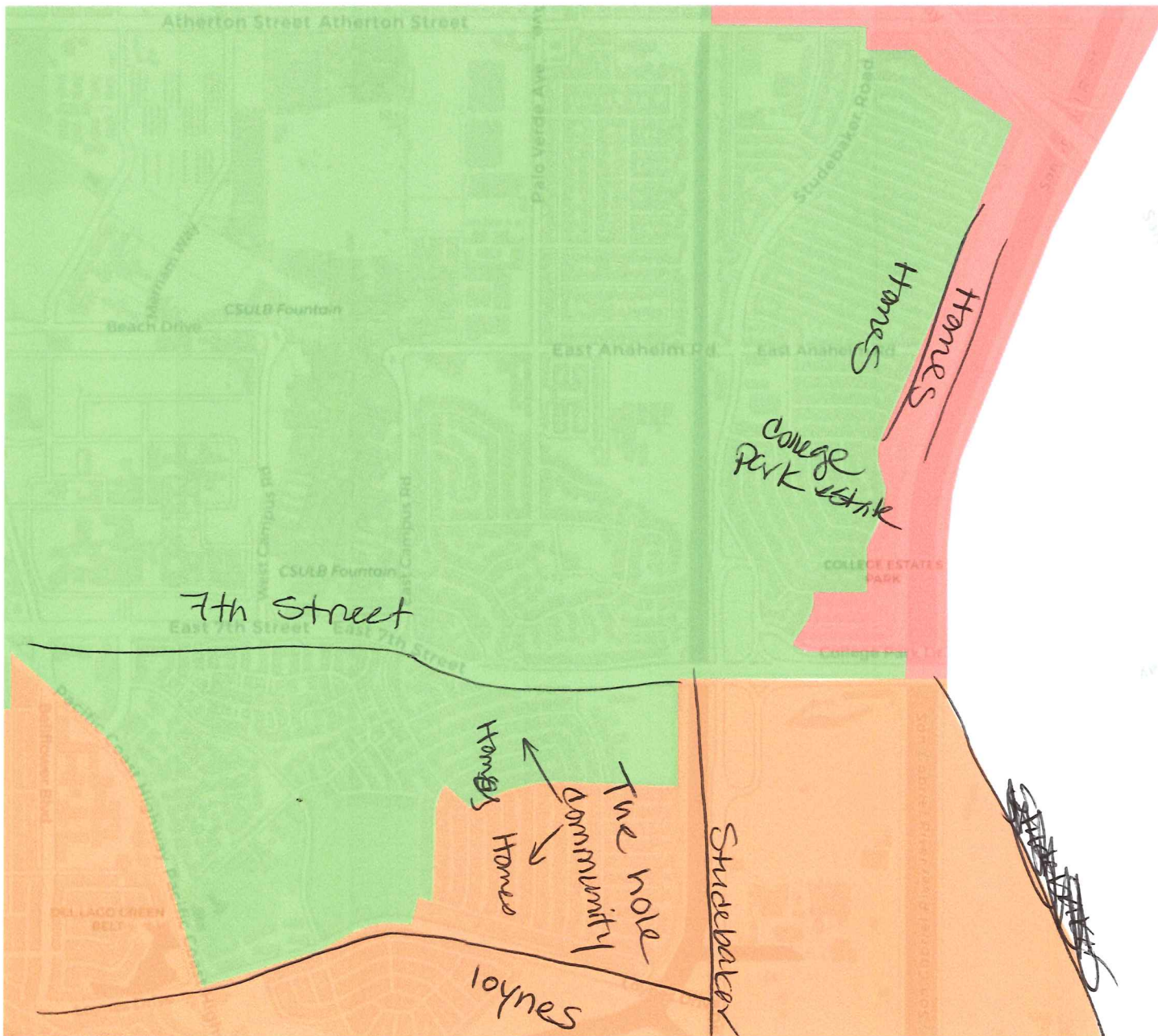
San Diego Freeway

San Diego Freeway

San Diego Freeway

LEISURE WORLD

Leaflet | © OpenStreetMap contributors



establish other deadlines for the commissioner application and selection process described in this Section.

- (k) The Commission may remove a commissioner for substantial neglect of duty, gross misconduct in office, or inability to discharge the duties of office, but only after providing the subject commissioner written notice and an opportunity for a response at a public meeting.
- (l) If a commissioner resigns or is removed from the Commission, the Chair of the Commission shall randomly select one (1) of the alternates to fill the vacancy as a voting commissioner. If the Commission is unable to act because there are fewer than nine (9) active commissioners, the City Clerk shall, within one (1) month of making this determination, recruit a pool of qualified applicants to fill the vacancies. The remaining commissioners shall, within two (2) weeks of the pool being constituted, appoint replacement commissioners from this pool by a two-thirds vote.
- (m) For purposes of this section, "diversity" includes, but is not limited to, racial, ethnic, gender, and sexual orientation diversity.

(Added by Meas. DDD, 11-6-2018, eff. 12-11-2018)

Sec. 2506. - REDISTRICTING REQUIREMENTS AND CRITERIA.

- (a) The Commission shall draw its final map so that:
 - (1) Council districts are as nearly equal as practicable in total population;
 - (2) The final map complies with the U.S. Constitution; the Federal Voting Rights Act, the California Constitution; and any other requirement of federal or state law applicable to charter cities; and
 - (3) Each Council district is geographically contiguous, to the extent practicable, and has a clearly defined boundary.
- (b) In addition to following the requirements of subsection (a), the Commission shall consider the following criteria when drawing the final map, in order of priority:
 - (1) The geographic integrity of a neighborhood should be respected in a manner that minimizes its division.
 - (2) Communities of interest. The geographic integrity of a community of interest should be respected in a manner that minimizes its division. A community of interest is a contiguous population that shares common social and economic interests that should be included within a single district for purposes of its effective and fair representation;
 - (3) Neighborhoods and communities sharing a common language, history, culture and identity should not be divided so as to dilute their voting power;
 - (4) Geography and topography: Districts should respect major topographic and geographic features of the City;
 - (5) District boundaries should be easily identifiable and understandable by voters. Districts should be bounded by natural and artificial barriers, by street lines, and/or by City boundary lines;
 - (6) Districts should be geographically compact such that nearby areas of population are not bypassed for more distant population;
 - (7) All lines must correspond to census blocks in order to preserve the validity of data and avoid arbitrary boundaries; and
 - (8) Other Commission may adopt other criteria that do not conflict with the other requirements and criteria listed in this section or with state or federal law.
- (c) The Commission shall not consider place of residence of any individual, including any incumbent or political candidate, in the creation of a map.

October 27, 2021

Dear Commissioner Alejandra Gutierrez,

Again, thank you for your acceptance of the map 61852 we submitted to the commission for your consideration. I am honored and pleased that this map, created by a small group of residents, met the requirements of consideration. I have been a resident of Long Beach since 1988, and my friend Lori has live here since 1994.

One month ago, numerous Long Beach residents received a text saying. Your voice matters!

We answered the call and attended a workshop at a local library. We created our own redistricting map guided by **both** the stated criteria **and** informed by the following beliefs:

- a. Long Beach was based upon spiritual principles of equity and inclusion as early as the 1870s through the teachings and actions of Rev. George W. Hathaway
- b. A city with a name which includes the beach ought to have the majority of districts with claim to the city's coast.

We totally understand that the map we submitted proposes a dramatic change.

However, we do have hope:

Our group has taken part in conversations with Americans from all over the country every week since September 2020. People from different religions, ethic backgrounds, belief systems – we're talking with **each other**. I had the honor and privilege to speak with Miss Nettie who was in Selma. She was just a young girl, but she cried with us as she finally got to talk about events kept quiet about for so nearly 70 years. We are finally talking **with** each other!

And we can do that here in Long Beach.

To our fellow City Council members:

We well know that if this map be approved, your constituency will change. If you are doing your job well now, then the people in your new district will know this and will re-elect you!

To the business owners and companies who will potentially be relocated to another district:

Neither your business nor clients will move. Your profits will continue but your City Hall representative may change. IF they have your interest in mind, they will secure your vote.

To the community leaders:

We want the same things that you want – a vibrant and safe community.

To our fellow Long Beach Residents:

New boundaries to existing communities have not changed, and any new community of interest can be easily incorporated into this map. What does change is who you may be talking to at the

302 E 19th St #2

GREGORY JEFFERS
Long Beach, CA 90806
gregoryjjeffers@gmail.com

562.437.6429

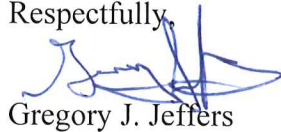
City Council town halls, or neighborhood meetings. Our group experience had shown direct conversations with others whose opinions are different has only expanded knowledge and understanding.

We believe that this is the map that Long Beach needs to define itself for the next ten years. However, we simply have submitted this map as a part of our civic honor and duty.

We believe that this a map which Long Beach needs.

We are presenting to you a strong alternative to what we have been accustomed. May we all, in this great city which was once so lovingly referred to as "Iowa by the Sea" embrace whatever changes and highlight our fantastic city in showing the rest of California and cities across the United States how wonderful a thing our democracy is!

Respectfully,



Gregory J. Jeffers

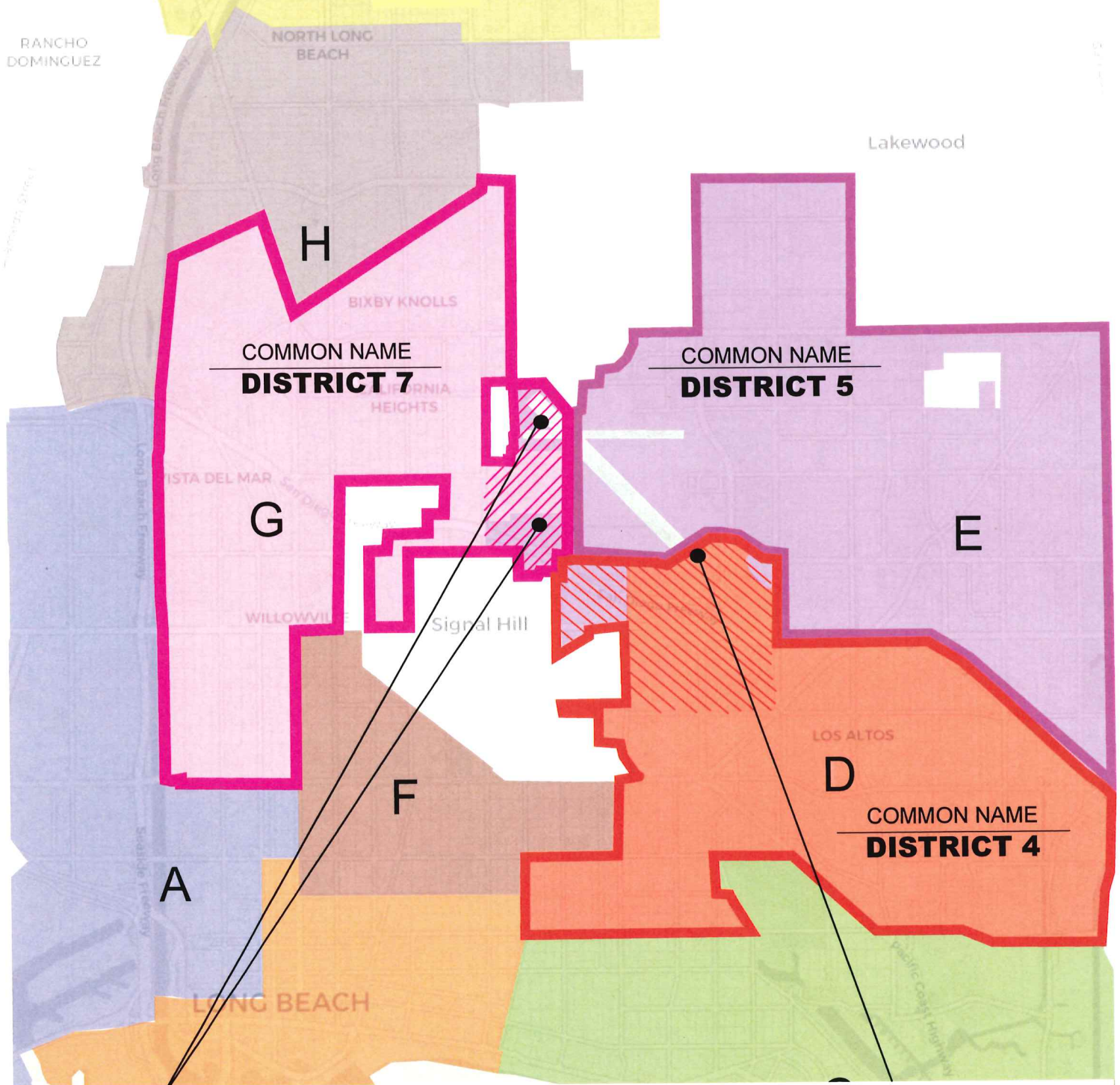
Long Beach Resident



Lori Logan

Long Beach Resident

Share The Voice with Airport Impacted Neighborhoods



Add this Airport Property
to District G (District 7)

Add this Airport Property
to District D (District 4)

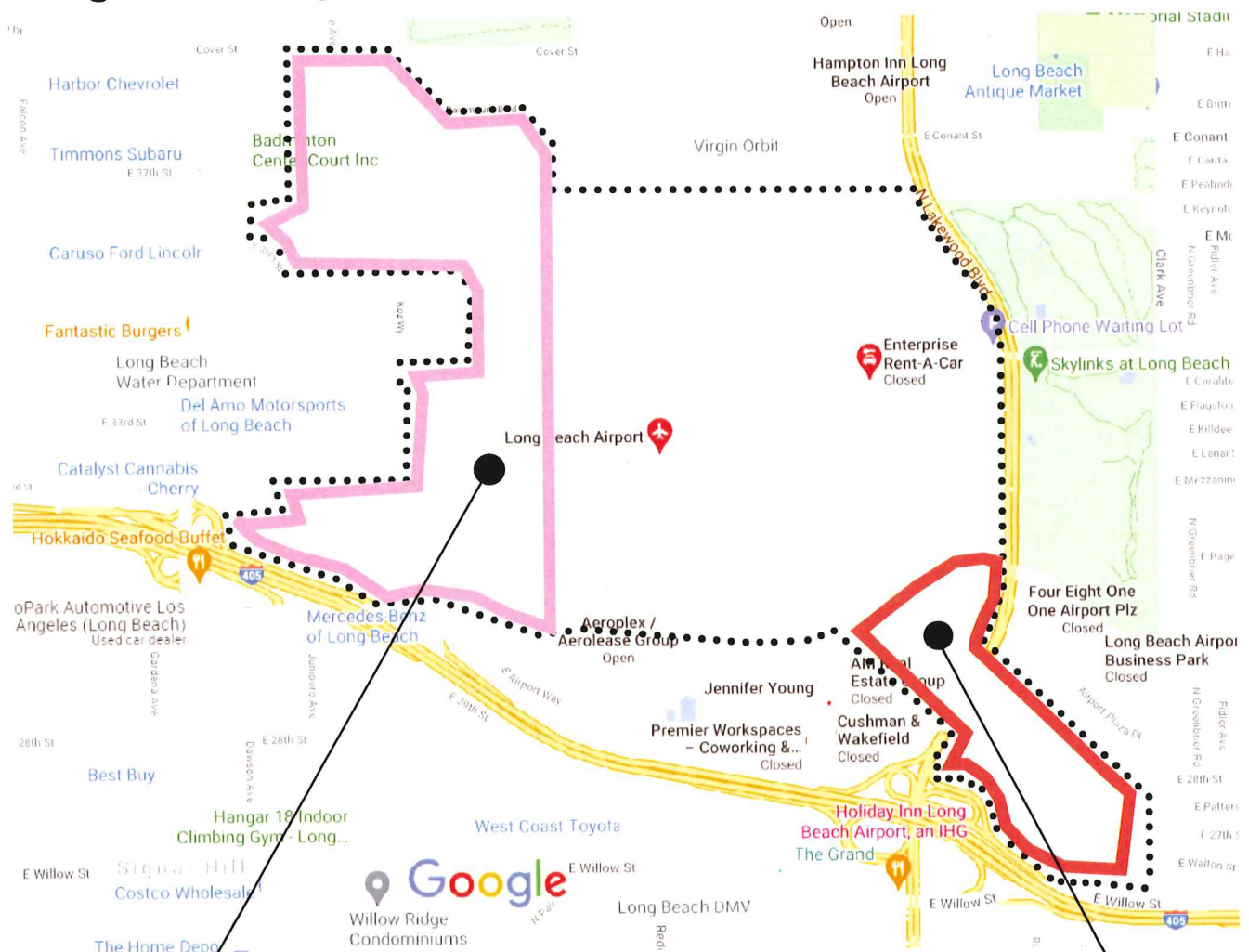
AIRPORT ADJACENT NEIGHBORHOODS GROUP COMMUNITY OF INTEREST

Share The Voice with Airport Impacted Neighborhoods

Long Beach Airport Property has complex boundaries.

Giving airport adjacent neighborhoods a voice requires an understanding of the airport property boundaries. The AANG COI asks to share the airport property between Districts.

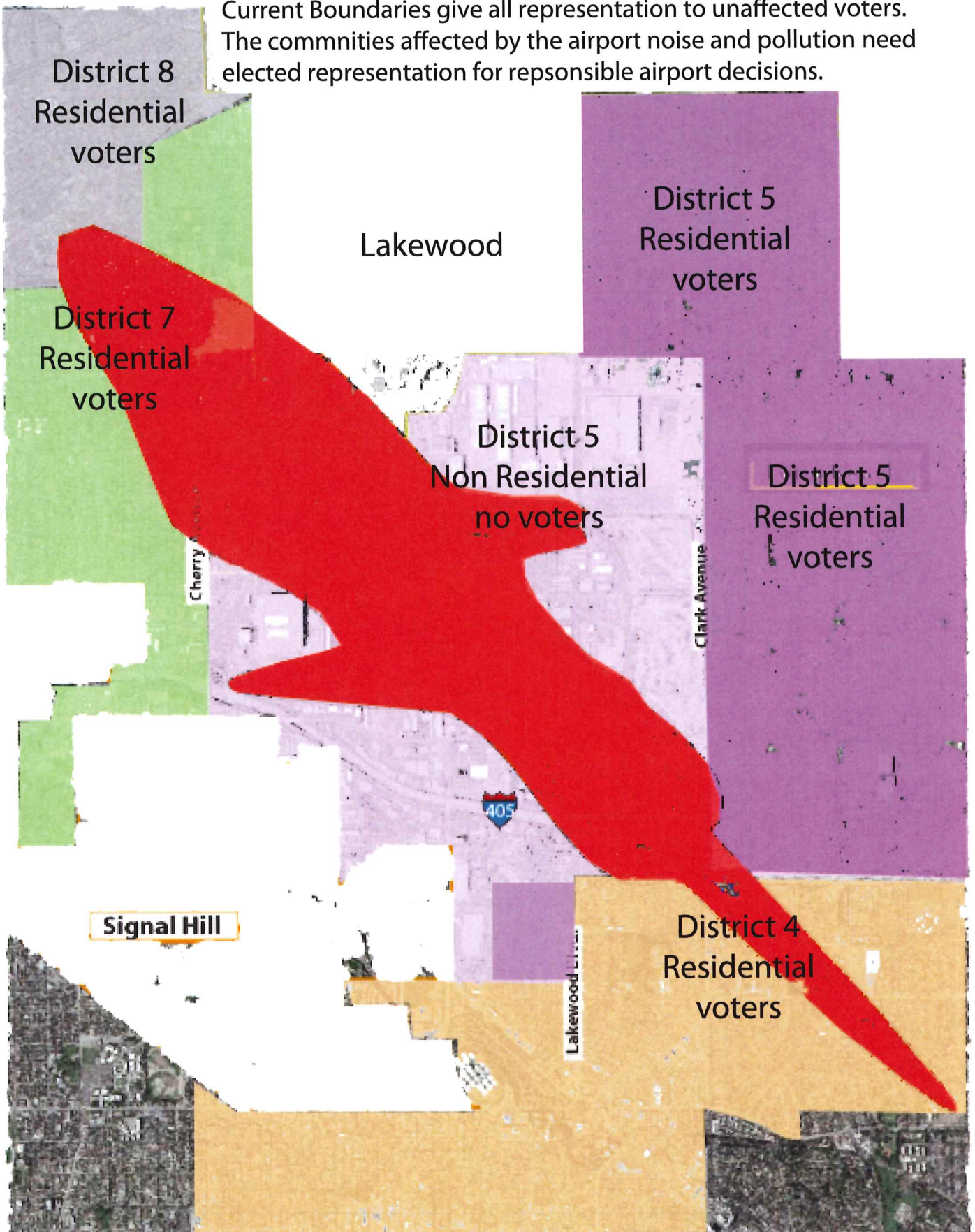
Long Beach Airport Map



Add this Airport Property to District G (District 7)

Add this Airport Property to District D (District 4)

Current Boundaries give all representation to unaffected voters.
The communities affected by the airport noise and pollution need
elected representation for responsible airport decisions.



Community of Airport Adjacent Neighborhoods need elected representation in airport.

LONG BEACH MUNICIPAL CODE
ARTICLE XXV. - COUNCILMANIC DISTRICTS AND REDISTRICTING

Sec. 2506. - REDISTRICTING REQUIREMENTS AND CRITERIA.

- Requirements**
- (a) The Commission shall draw its final map so that:
 - (1) Council districts are as nearly equal as practicable in total population;
 - (2) The final map complies with the U.S. Constitution; the Federal Voting Rights Act, the California Constitution; and any other requirement of federal or state law applicable to charter cities; and
 - (3) Each Council district is geographically contiguous, to the extent practicable, and has a clearly defined boundary.
 - (b) In addition to following the requirements of subsection (a), the Commission shall consider the following criteria when drawing the final map, **in order of priority**:
 - (1) The geographic integrity of a neighborhood should be respected in a manner that minimizes its division.
 - (2) Communities of interest. The geographic integrity of a community of interest should be respected in a manner that minimizes its division. A community of interest is a contiguous population that shares common social and economic interests that should be included within a single district for purposes of its effective and fair representation;
 - (3) Neighborhoods and communities sharing a common language, history, culture and identity should not be divided so as to dilute their voting power;
 - (4) Geography and topography: Districts should respect major topographic and geographic features of the City;
 - (5) District boundaries should be easily identifiable and understandable by voters. Districts should be bounded by natural and artificial barriers, by street lines, and/or by]City boundary lines;
 - (6) Districts should be geographically compact such that nearby areas of population are not bypassed for more distant population;
 - (7) **All lines must correspond to census blocks in order to preserve the validity of data and avoid arbitrary boundaries;** and
 - (8) Other Commission may adopt other criteria that do not conflict with the other requirements and criteria listed in this section or with state or federal law.
- Criteria in order of Priority**

C-14

November 17, 2020

HONORABLE MAYOR AND CITY COUNCIL
City of Long Beach
California

RECOMMENDATION:

Adopt Specifications No. RFP CM20-015 and award a contract to Redistricting Partners, of Sacramento, CA, for professional services to assist City staff and the Independent Redistricting Commission to establish City Council district boundaries, in accordance with the City Charter and state and federal law, for a total contract amount not to exceed \$245,000, for a period of two years, with the option to renew for an additional one-year period, at the discretion of the City Manager; and, authorize the City Manager, or designee, to execute all documents necessary to enter into a contract, including any necessary amendments. (Citywide)

DISCUSSION

City Council approval is requested to enter into a contract with Redistricting Partners for professional services to assist City staff and the Independent Redistricting Commission in establishing City Council district boundaries, in accordance with the City Charter and state and federal law.

On November 6, 2018, Long Beach voters approved Measure DDD – City of Long Beach Independent Citizens Redistricting Commission. Measure DDD amended the City Charter to create a Commission of Long Beach residents to determine the boundaries of Council Districts every ten years after the national census. The Commission will be comprised of 13 members and two alternates that will act as an independent body charged with the adoption of a map that establishes Council District boundaries within six months after census-block-level population data from a regular United States decennial census is made available to the public. To achieve the adoption of a final map, the Commission will review census-block-level population data from the 2020 Census, provide an open and fair process for public input, deliberate proposed maps, and report on progress made. Redistricting Partners will assist the Commission and City staff during the redistricting process in several ways. Professional services provided by Redistricting Partners will ensure compliance of applicable redistricting process laws throughout the process, deliver trainings to Commissioners to fulfill their duties, conduct a “communities of interest” analysis, implement and staff public meetings, and provide mapping software and services that allow for the Commission and public to create and analyze proposed maps for final adoption. Redistricting Partners will also assist the Commission with completing a report to the City Council recommending any changes including amendments to the City Charter, that could improve the redistricting process in future years.

The Request for Proposals (RFP) was advertised in the Long Beach Press-Telegram on December 23, 2019, and 380 potential proposers were notified of the RFP opportunity. Of those