

**From:** joe mello [mailto:mello.joe@gmail.com]

**Sent:** Monday, September 13, 2021 11:52 AM

**To:** Bradley Bounds <Bradley.Bounds@longbeach.gov>; Redistricting <Redistricting@longbeach.gov>

**Cc:** JT Nagayama <Jonathan.Nagayama@longbeach.gov>; City Manager <CityManager@longbeach.gov>; Tom Modica <Tom.Modica@longbeach.gov>; CityClerk <CityClerk@longbeach.gov>

**Subject:** Whaley Park on draft maps

**-EXTERNAL-**

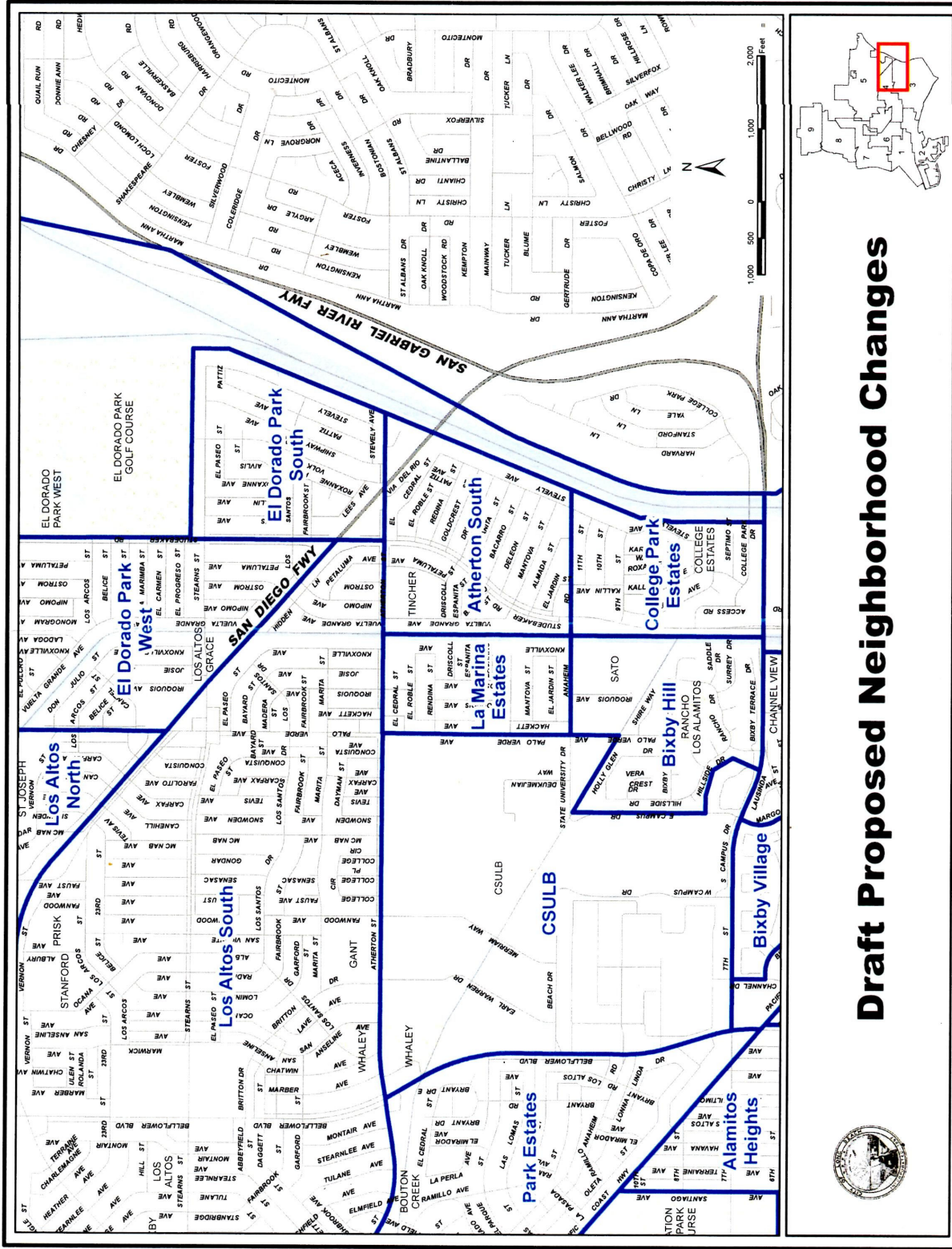
Hello Bradley

When you handed out the Draft Proposed Neighborhood Changes map (attached) , I of course focused on the Los Altos/ La Marina/ fake Palo Verde problem. However, now that I have had a chance to examine the whole map, I do want to draw your attention to the expanded CSULB portion of the draft map. Whaley Park is bisected by Atherton, a North Section of the park, and a South Section. The Whaley Park Southern Section of your map is split from the Whaley Park Northern Section - with the Southern Section placed in the now expanded CSULB draft neighborhood. If CSULB does remain in the 3rd, the Whaley Park Southern Section where the Los Altos Neighborhood amenities are located will be in the 3rd according to this draft map. That would include the Los Altos Little League field and the Whaley Park Recreation and Community Center, which is the largest city meeting room in the 4th District. It would also take the Los Altos United Church of Christ and the Los Altos YMCA out of the 4th and put them in the 3rd District. Bolton Creek has been the natural boundary between the 3rd and the 4th in that portion of the city because these neighborhood amenities serve the Los Altos neighborhoods- hence why they are all named Los Altos.

Also by splitting Whaley Park, you are decreasing the park space in the 4th District which if you consider that the Whale Tale gerrymander area of El Dorado Park is returned to the 5th will further impact the

Please include this email in the Redistricting Commissioners communication packet.

Regards  
Joe Mello  
LACAN  
Chair



# Draft Proposed Neighborhood Changes



**From:** BOB JOY [mailto:bob.joy@verizon.net]

**Sent:** Monday, September 13, 2021 4:42 PM

**To:** Redistricting <Redistricting@longbeach.gov>

**Cc:** Bradley Bounds <Bradley.Bounds@longbeach.gov>; JT Nagayama <Jonathan.Nagayama@longbeach.gov>

**Subject:** Making Districts in Maptitude

**-EXTERNAL-**

Commissioners,

I made up this set of Maptitude instructions for the AANG support group and they recommended that I also send them to you. You have my permission to use this, or a modified version, in any way you determine will benefit the redistricting process.

Maptitude allows users to edit the shape of whole districts to balance their populations but it requires that each district be initially defined by hand one census block at a time. The sequence below describes how to set up your own Plan in Maptitude, use it to create districts to be modified, edit the shapes of those districts to adjust the size & location of their populations then share your plan with all other Maptitude users or submit your plan for consideration by the Redistricting Commission.

I know this looks daunting but following these steps will save the frustration of trying to second guess the Maptitude interface. I've worked up a shortcut at the end which will save the time of having to define whole districts to get started. Feel free to pass this on to anyone you think needs it.

Bob Joy

## Maptitude District Rebalancing Sequence

1. From the login window select New Plan
2. In new plan window select Create
3. In a popup window these text lines will appear
  - o Copy selected plan
  - o to a new plan named
  - o My Long Beach Blank Map
4. Mouse on the last line which will highlight in a blue box
5. Type in a new name that will function as an overall ID for your re-balanced districts
6. Selecting OK will return you to the home screen with the new map name in the black bar at the top of the Toolbox window
7. In the Options window slide the Label Size slider all the way to the left to make labels visible. Selecting Layers>Current City Council will color code the existing council districts.
8. Each district you wish to change must first be created by selecting all its census blocks so select Target>New District and Source>All and make sure Options>Layers>Current City Council is selected
9. Use the selection tools to highlight all the census blocks currently in the district you wish to change.
10. Select the checkmark icon in the Selection Tools to get a window labeled New District Settings
11. Click to the right of District ID and type in the number of the district you have highlighted, it will appear on the map.
12. Click to the right of "Long Name" and type in a multi word description (21 letter/space limit)
13. The number of the district you just created will now show up in the Target drop down menu

14. To create additional districts repeat steps 8-12 above
15. You're created districts will show up on the map with a black box listing their number and the percentage that their population deviates from a Long Beach norm for all districts based on 2010 census data.
16. Notice that the Districts window (bottom left of Map) now shows population stats for your new districts
17. The Changes window (bottom right) now shows a data column for the district chosen in the Target drop down menu and a column for the district chosen in the Source drop down menu.
18. To move boundaries (and population) from one district into another select Target>district #, and Source>district #.
19. Use Selection tools to pick census blocks to be shifted between adjacent districts. Only blocks in the Source district can be picked. Refer to the Changes window to track population impact and % deviation from the norm which will change dynamically as you re-assign census blocks.
20. Select the Checkmark icon to implement the boundary changes. All your changes will be saved as your personal files in Maptitude online files and are available only to you when you next log in.
21. To make your map available to all other Maptitude users select Share Plan from the top menu. A drop down box will ask if you want to re-name your plan. Selecting OK will post your plan to the Maptitude online shared file.
  - Note: It appears that any new name given to your plan will be added to your original plan name and both names will appear for your plan when its listed online.
22. To submit your plan select Submit Plan at the top of the Maptitude page and notice that a box provided for insertion of descriptive text has a 250 word limit. This limit is actually and exactly 180 words.
23. To fill in the fields for personal information mouse one inch to the right of the field name to trigger a text input box. Selecting OK will submit the map to the Redistricting Commission.
24. No map number will be generated, any future reference must be by the map name preceded by your user name.

## Shortcut

I have made up a shared plan with all 9 districts defined and numbered that will save you the trouble of making up each district you want to change from scratch. To use this as a starting point do the following:

1. Login to Maptitude
2. Select New Plan
3. Select Shared (not Initial)
4. Scroll down to select **BJoy21/Current Long Beach Districts** then select Create
5. In a popup window these text lines will appear
  - Copy selected plan
  - to a new plan named
  - My Current Long Beach Districts
6. Mouse on the last line which will highlight in a blue box
7. Type in a new name that will function as an ID for your subsequent changed districts
8. Selecting OK will return you to the home screen with the new map name in the black bar at the top of the Toolbox window
9. Notice that district numbers 1-9 appear in the Target and Source drop down menus
10. To modify districts perform step 7 above then start at step 16.

**From:** charles f Ward [mailto:wardchuck1@gmail.com]

**Sent:** Friday, September 17, 2021 11:48 AM

**To:** Redistricting <Redistricting@longbeach.gov>

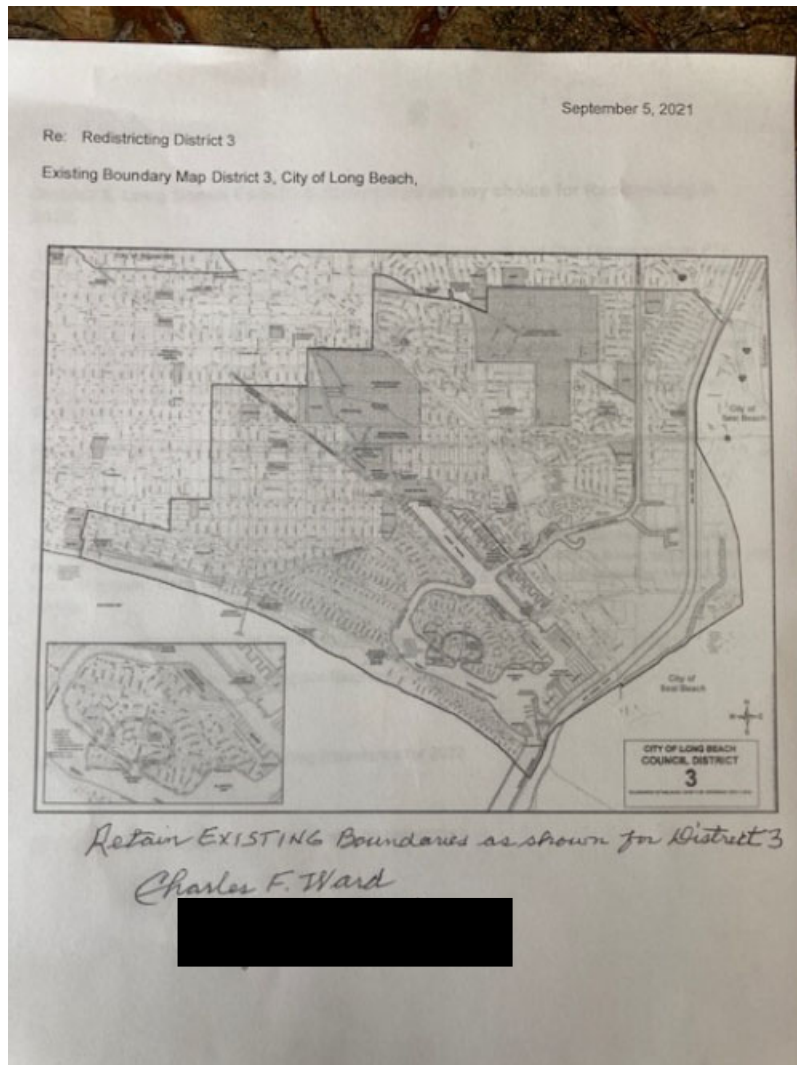
**Cc:** Kathleen Ward <kathy@rwcpas.com>; Mark Williams <MarkWilliams@geoscience-water.com>; RANDY BEERS <randy.beers.mail@verizon.net>; JOHN LEIPOLD <Johnjohn143@verizon.net>; Don Burdge <DON@Burdge.com>; Bob Luskin <flybob@verizon.net>; Jack Cunningham <Jack.Cunningham@longbeach.gov>; Joe Vivilacqua <5628820566@sms.newcingularwireless.com>; MIKE HITE <hite\_islanders@yahoo.com>; Katherine Winberg <katherine.a.winberg@aol.com>; Maureen Poe <maureenpoe@gmail.com>; Ken Trossen <kentrossen@equityre.com>; Rosemary Ryan <roseryan1227@gmail.com>

**Subject:** 3rd Districting MY Plan Choice for Charles F Ward

**-EXTERNAL-**

Please Retain Existing Boundaries for District 3.

See attached Map and My Choices for District 3 boundaries.





**District 3, Long Beach EXISTING Boundaries are my choice for Redistricting in 2022.**

The Neighborhood Associations, Business Associations, Community and Civic Groups such as P Church, Clubs and Neighborhood Watch and CERT have organized communication chains and th They are working together for the good of Long Beach City.

Our Street is residential homes. The residents are mixed racial with both seniors, families and sin Our Church, Schools and Local Businesses are within walking and bicycling. The Naples Improve Association and Naples Business Association are active in community issues and activities. We h These Community(s) Associations need to be preserved. Keep District 3, Long Beach, EXISTING Boundaries.

Major Concerns: Public Safety, Rule of Law, Homelessness, Traffic, Parking, Fire, and Disaster Preparedness.

Air Bnbs, and VRBOs are destroying our Neighbor Community. We have a Super Host Air Bnb n door. The 3 bedroom home has been converted to a full time—Air Bnb. There is now a separate k entry for guests. Each bedroom has a key pad for entry. This is a commercial operation in an R1 zoning.

The VRBO residence behind us has a separate alley key pad controlled entrance.

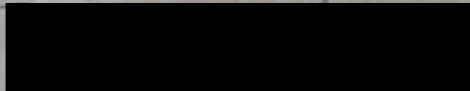
Air Bnbs, and VRBOs are destroying our Neighbor Community.

See Attached photo of my Redistricting Boundaries for 2022.

[Redistricting@longbeach.gov](mailto:Redistricting@longbeach.gov) email address for redistricting.

*Please File*

*Charles F. Ward,*



Please file my Choice for Retaining Existing Boundaries for District 3.

Thank you

Charles F Ward

Sent from my iPhone

**From:** Padric Gleason Gonzales [mailto:padric.gleason@gmail.com]  
**Sent:** Sunday, September 19, 2021 4:35 PM  
**To:** Redistricting <Redistricting@longbeach.gov>  
**Subject:** Public comment: Unite West Long Beach!

**-EXTERNAL-**

Dear Commissioners,

I'm writing to advocate that you unite West Long Beach into a single city council district during the redistricting process this year. For decades, the communities west of the LA River have been sliced up, then appended to larger districts opposite the waterway. This has clear negative impacts on the neighborhoods' ability to organize and it dilutes their voice when confronting major problems like port emissions, highways expansion, and other environmental disasters. The area is nationally known as a "Diesel Death Zone." By NOT uniting West Long Beach residents into a single district, we perpetuate the environmental racism that we claim to oppose. Please unify West Long Beach as a single city council district this year.

Regards,  
Padric

--

Padric Gleason Gonzales

(City Council District 1)

**From:** corlisslee@aol.com [mailto:corlisslee@aol.com]

**Sent:** Tuesday, September 21, 2021 11:29 PM

**To:** Redistricting <Redistricting@longbeach.gov>; Bradley Bounds <Bradley.Bounds@longbeach.gov>

**Subject:** e-Comments for tomorrow's meeting

**-EXTERNAL-**

Agenda item 3: there are 2 attachments that appear to be identical.

Agenda item 4:

There is no staff report or attachment available with this agenda item. Please post the presentation asap so attendees have a chance to study the information before commenting. If you cannot do that, the public should be allowed to hear the presentation before being called on to comment on this line item.



**From:** Laura Sellmer [mailto:laurasellmer@gmail.com]

**Sent:** Wednesday, September 22, 2021 1:33 AM

**To:** Redistricting <Redistricting@longbeach.gov>; JT Nagayama <Jonathan.Nagayama@longbeach.gov>; Bradley Bounds <Bradley.Bounds@longbeach.gov>

**Subject:** Agenda Item 4, Redistricting Commission Meeting, Sept 22

**-EXTERNAL-**

I respectfully request the Commission ensure the public comments are scheduled after the “report” is given to the Commission. This report, which you are being asked to vote on, has not been made available to anyone, in any language, to communities of interest or to the public for any review, prior to the time Agenda Item 4 is heard.

Census Blocks are a very important matter to the public. For months now, at every Commission meeting, Redistricting Partners has been misleading you, and members of the public using Maptitude, stating you cannot draw boundaries that do not conform to census blocks. These statements are patently false and untrue. In Section 2502, the City Charter provides the Commission with the ability to draw boundaries that do not follow the criteria in Section 2506 such as Census Blocks. The Charter is clear that you include a reasonable justification for not conforming to a criteria in Section 2506. Redistricting Partners is NOT telling the Commission, or the public, that this provision is in the Charter.

The Communities of Interest are relying on you to allow public comment after the report is given. An informed public voice will ensure your vote on Agenda Item 4 includes true community engagement.

Thank you for your service to Long Beach.

Laura Sellmer

**From:** Glennis Dolce [mailto:glennisd@me.com]

**Sent:** Wednesday, September 22, 2021 8:52 AM

**To:** Redistricting <Redistricting@longbeach.gov>; JT Nagayama <Jonathan.Nagayama@longbeach.gov>; Bradley Bounds <Bradley.Bounds@longbeach.gov>

**Subject:** Redistricting meeting 9/22/2021 Comments

**-EXTERNAL-**

Good Morning Redistricting Commission!

After reviewing last weeks meeting as well as today's agenda I have a few comments to make.  
(I signed up to speak virtually today but now find I had another commitment so may not be able to, hence this email.)

Please enter this email into the record.

I am glad (but a little confused now) on why the newly introduced District R mapping software is allowing the Globemaster project area to be selected as new census blocks yet the older mapping tool Maptitude was not allowing this and that Redistricting Partners has been adamant that the selection of this area was not allowed as it "split census blocks". Perhaps item 4 today can clear that up. Having two mapping software programs that don't agree with each other is problematic.

Which brings me to my final comment- Agenda Item 4.

I tried to understand how I could prepare a comment for this item since there is no report or attachments in the agenda regarding this.

I request that you have the report presented first and then allow the public to comment on it as would be the logical order of things. We cannot comment on that which we have no information.

I know I have seen the City Council require the public to comment prior to presentation and council discussion in what seems to be an effort to avoid controversy.

We need to trust the process here and being informed prior to speaking is key to this trust.

I commend the Commission and especially the Chair on running very good meetings that are respectful of the public speakers! It really has been a breath of fresh air!

Thank you!!

Sincerely,

Glennis Dolce  
District 7

**From:** BOB JOY [mailto:bob.joy@verizon.net]  
**Sent:** Wednesday, September 22, 2021 10:55 AM  
**To:** Redistricting <Redistricting@longbeach.gov>  
**Cc:** Bradley Bounds <Bradley.Bounds@longbeach.gov>; JT Nagayama <Jonathan.Nagayama@longbeach.gov>  
**Subject:** Census Block Discrepancy

**-EXTERNAL-**

Commissioners,  
Please find below the presentation I will make at tonights public forum in public comment on agenda item 4.

Thank you,

Bob Joy

## **09/22/21 Redistricting Forum**

My name is Bob Joy and I live in the 8th district. I'm here to bring to your attention the fact that the new DistrictR mapping tool contains census blocks that do not exist in Maptitude. Specifically three new blocks within the airport property and adjacent to Council District 7. On the top of the handout page is a screen dump from Maptitude showing, in red, the only two airport census blocks adjacent to District 7. They are surrounded by the single large airport census block.

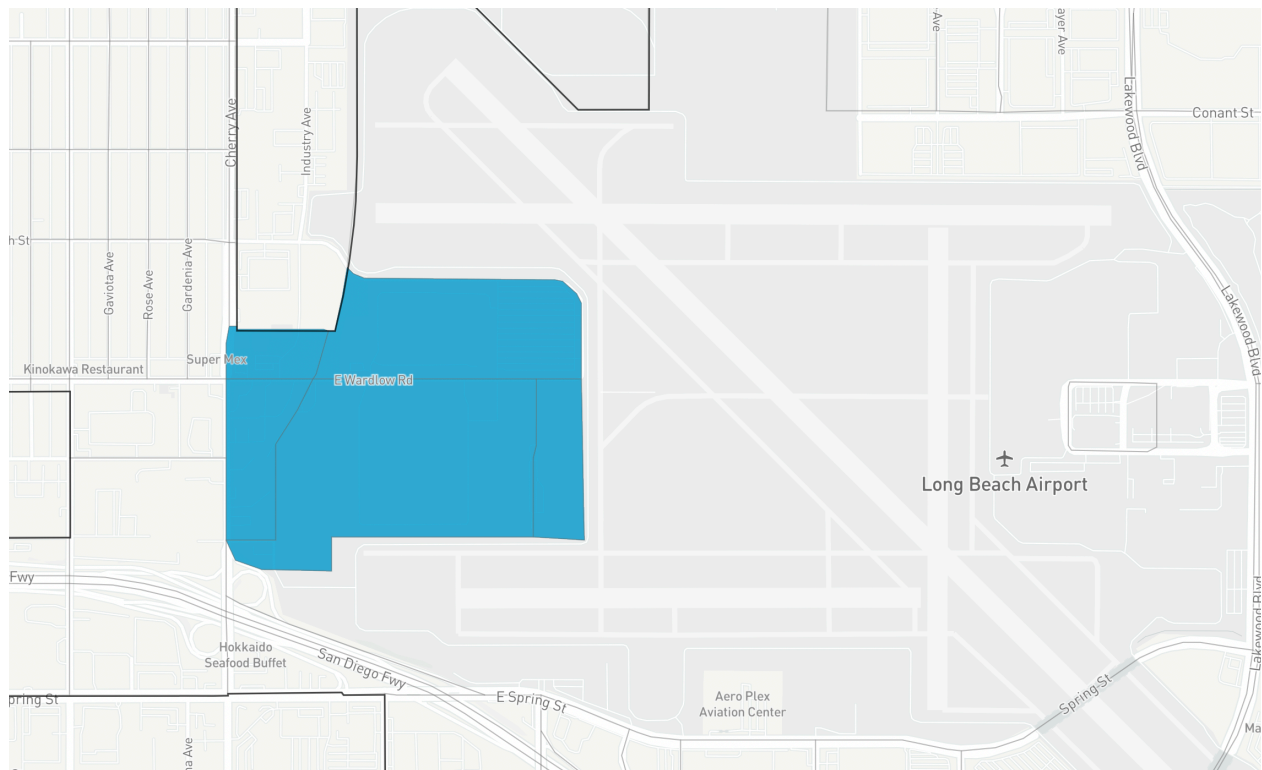
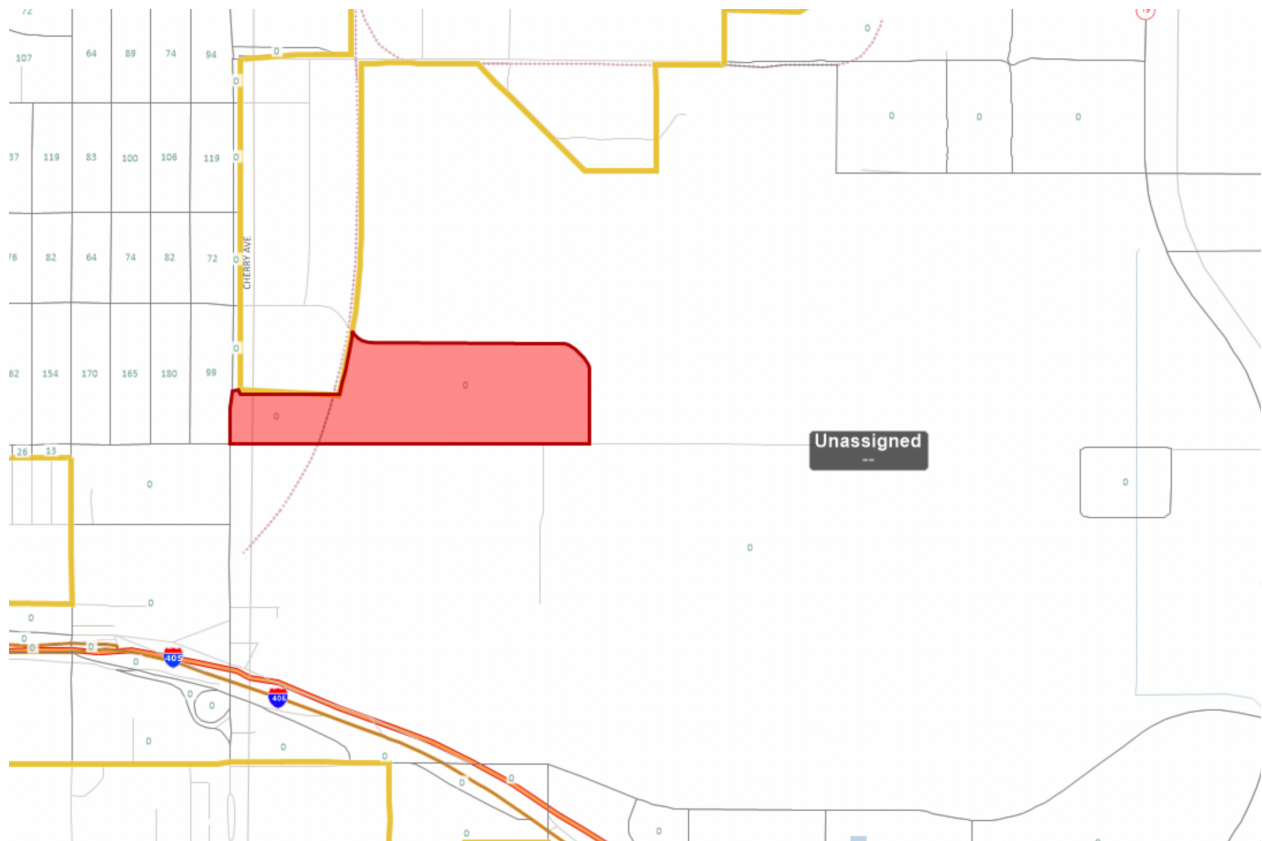
On the bottom of the handout page is a screen dump from DistrictR showing exactly the same area. As you can see new census blocks, in blue, have been added to the original two. These new blocks have been carved out of the single large airport census block, dividing that block.

This is in direct contradiction to what we have been told

repeatedly by Redistricting Partners in these forums that census blocks cannot be divided.

If these new census blocks are part of the 2020 census data then we are happy that the Globemaster Business Park, which they contain, can now be added to District 7 using available census blocks. But if the new blocks are not part of the 2020 census data then we need guidance, preferably during this meeting, on which mapping tool is correct and an explanation of why unoccupied census blocks cannot be divided since this example clearly proves that they can.

Those of us who are submitting COI definitions and/or suggested alterations to Council District boundaries need an immediate resolution to this discrepancy. We respectfully request that this issue and this example be addressed by the Commission or their staff during your comment period at the end of this meeting.



**From:** juan ovalle [mailto:jeovallec@gmail.com]  
**Sent:** Wednesday, September 22, 2021 11:49 AM  
**To:** Redistricting <Redistricting@longbeach.gov>  
**Cc:** Bradley Bounds <Bradley.Bounds@longbeach.gov>  
**Subject:** Re: Maptitude Software is not working!

**-EXTERNAL-**

Mr. Bounds and Commissioners,

Thank you for your response. It seems that the issue I had encountered has been resolved. In the previous email you also stated that the neighborhood boundaries will be included in the DistrictR tool, will this also include the numerous smaller neighborhoods within the Bixby Knolls area, for example: Bixby Highlands, Bixby Terrace and others? Also, will existing councilmanic districts be included? Since you are migrating neighborhoods to the DistrictR tool, does this mean we, including the Redistricting Commissioners will now rely on the DistrictR tool rather than the Maptitude program to draw COI or District Map Boundaries? Another area that I have noticed is that census blocks seem to be much easier to work with in the DistrictR application, an issue that also needs to be addressed and clarified.

In addition, this evening's agenda item No. 4 is not available for public review prior to the meeting. Please advise and if it will not be made available before the meeting, please discuss prior to the public comment period.

<a href="#">21-112RC</a>	1 4. 092221-RC-Redistricting	RC-Agenda	Recommendation to receive and file a report on
	Criteria Report	Item	redistricting criteria relating to census blocks.

Sincerely,

Juan E. Ovalle

On Mon, Sep 20, 2021 at 6:20 PM Bradley Bounds <[Bradley.Bounds@longbeach.gov](mailto:Bradley.Bounds@longbeach.gov)> wrote:

Hello Juan,

Thank you for your patience. I have forwarded the errors over to the tech team. Is there a more detailed description that you can provide regarding the error? Our team has tested the system, and it is operating normally. Regarding the neighborhood boundaries, we are adding them in to DistrictR no later than the end of this week. Regarding the census boundaries, we intend to update the tool once we have finished processing the census data released from the Statewide Database.



**From:** juan ovalle <[jeovallec@gmail.com](mailto:jeovallec@gmail.com)>  
**Sent:** Monday, September 20, 2021 5:49 PM  
**To:** Bradley Bounds <[Bradley.Bounds@longbeach.gov](mailto:Bradley.Bounds@longbeach.gov)>  
**Cc:** Redistricting <[Redistricting@longbeach.gov](mailto:Redistricting@longbeach.gov)>  
**Subject:** Re: Maptitude Software is not working!

**-EXTERNAL-**

Attached, please find screenshot of the latest err message.

Best,

Juan

On Mon, Sep 20, 2021 at 5:47 PM juan ovalle <[jeovallec@gmail.com](mailto:jeovallec@gmail.com)> wrote:

Greetings again Bradley and Redistricting Commissioners,

It's past 5:30 and the Maptitude software is not working properly. Can you provide me with status and could you respond to my previous emailed questions? In addition, since it seems that the DistrictR.org software is working much better than the City version of Maptitude, could the neighborhood boundaries be included in DistrictR?

Thank you,

Juan E. Ovalle

On Mon, Sep 20, 2021 at 1:30 PM juan ovalle <[jeovallec@gmail.com](mailto:jeovallec@gmail.com)> wrote:

Good afternoon Mr. Bounds,

Redistricting Commissioners

Glad to see maptitude is up and somewhat running. However, it is still not responding properly, the attached screenshot is of another err message. Also, when will the latest census and tract data be uploaded?

Thank you,

Juan E. Ovalle

On Sat, Sep 18, 2021 at 10:41 PM Jeovallec <[jeovallec@gmail.com](mailto:jeovallec@gmail.com)> wrote:

Bradley,

Actually I have been using that application. How much did DistrictR cost LB taxpayers?

Juan E Ovalle

Sent from my iPhone

On Sep 18, 2021, at 8:49 PM, Bradley Bounds <[Bradley.Bounds@longbeach.gov](mailto:Bradley.Bounds@longbeach.gov)> wrote:

Hello Juan,

I'll send this over to my tech team. In the meantime, we have an alternative mapping tool that is easier to use on our website called DistrictR. Please feel free to check that one out. You can get to it on the mapping tool page but I have linked the tool directly below.

[https://districtr.org/event/Long\\_Beach](https://districtr.org/event/Long_Beach)

DistrictR User Guide: <https://districtr.org/guide>

Bradley Bounds II

Redistricting Program Specialist

Office of the City Manager

411 West Ocean Blvd., 10th Floor | Long Beach, CA 90802

Office: 562-570-6787

---

**From:** juan ovalle <[jeovallec@gmail.com](mailto:jeovallec@gmail.com)>  
**Sent:** Saturday, September 18, 2021 8:35:15 PM  
**To:** Bradley Bounds <[Bradley.Bounds@longbeach.gov](mailto:Bradley.Bounds@longbeach.gov)>  
**Subject:** Maptitude Software is not working!

**-EXTERNAL-**

September 18th, 2021

Mr. Bradley Bounds

Redistricting Commission

Since Friday afternoon, I noticed problems opening up maps on the Maptitude application. Again today Saturday, I tried in the morning and evening and I received the same err message, see attachment. This is unacceptable, especially for those of us that work and are attempting to find some time in the weekend to work on redistricting maps.

Please have this issue reviewed and corrected immediately.

Juan E. Ovalle

**From:** corlisslee@aol.com [mailto:corlisslee@aol.com]

**Sent:** Wednesday, September 22, 2021 12:02 PM

**To:** Redistricting <Redistricting@longbeach.gov>; Bradley Bounds <Bradley.Bounds@longbeach.gov>; JT Nagayama <Jonathan.Nagayama@longbeach.gov>

**Cc:** bob.joy@verizon.net; glennisd@mac.com; hoorae1@aol.com; jeovallec@gmail.com; laurasellmer@gmail.com; lmiller853@aol.com; mello.joe@gmail.com

**Subject:** presentation for tonights meeting - district 5

**-EXTERNAL-**

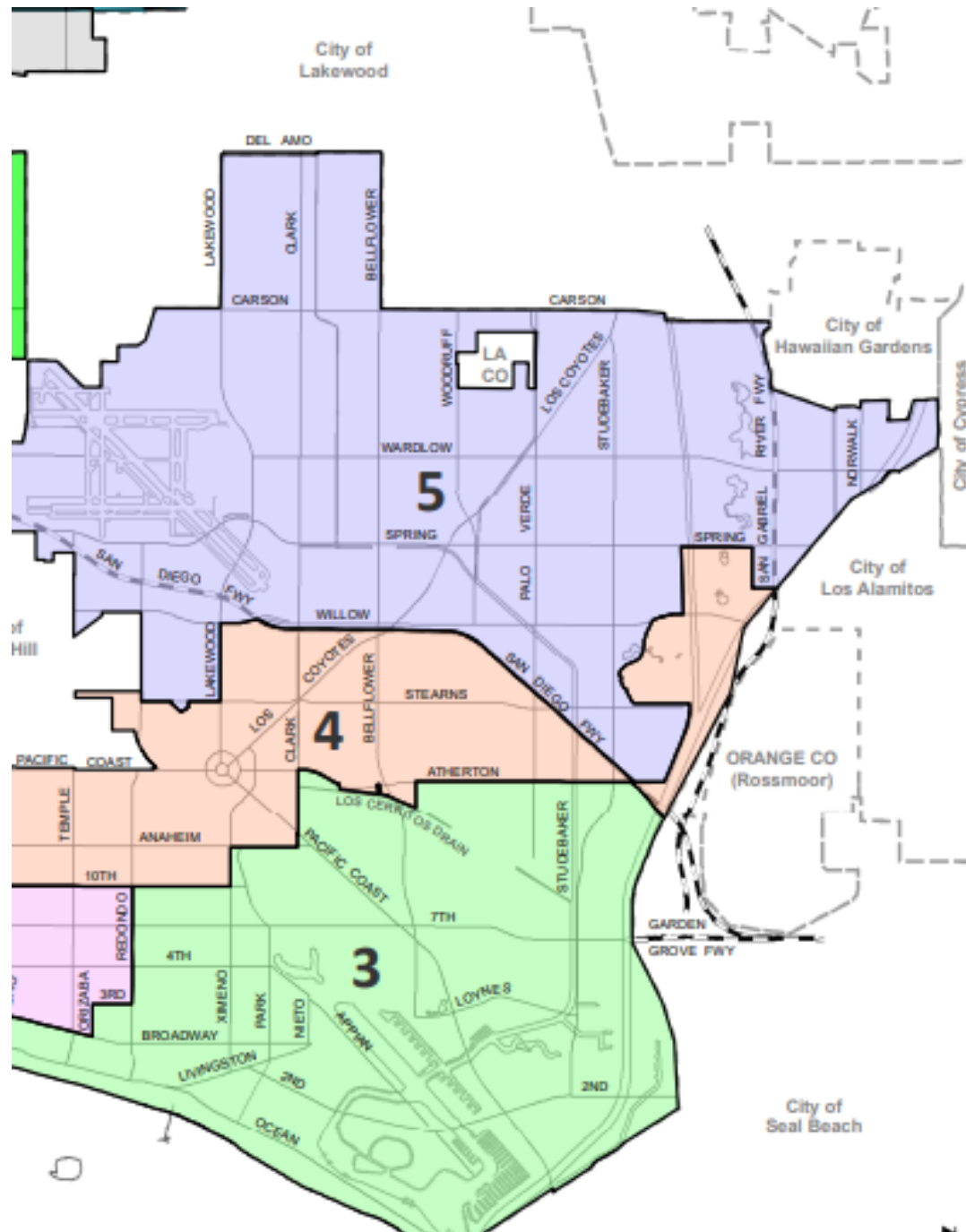
I would like to present this powerpoint file tonight at the redistricting meeting.

# District 5

## Member - Airport Adjacent Neighborhoods COI

Map by Corliss Lee  
September 22 2021

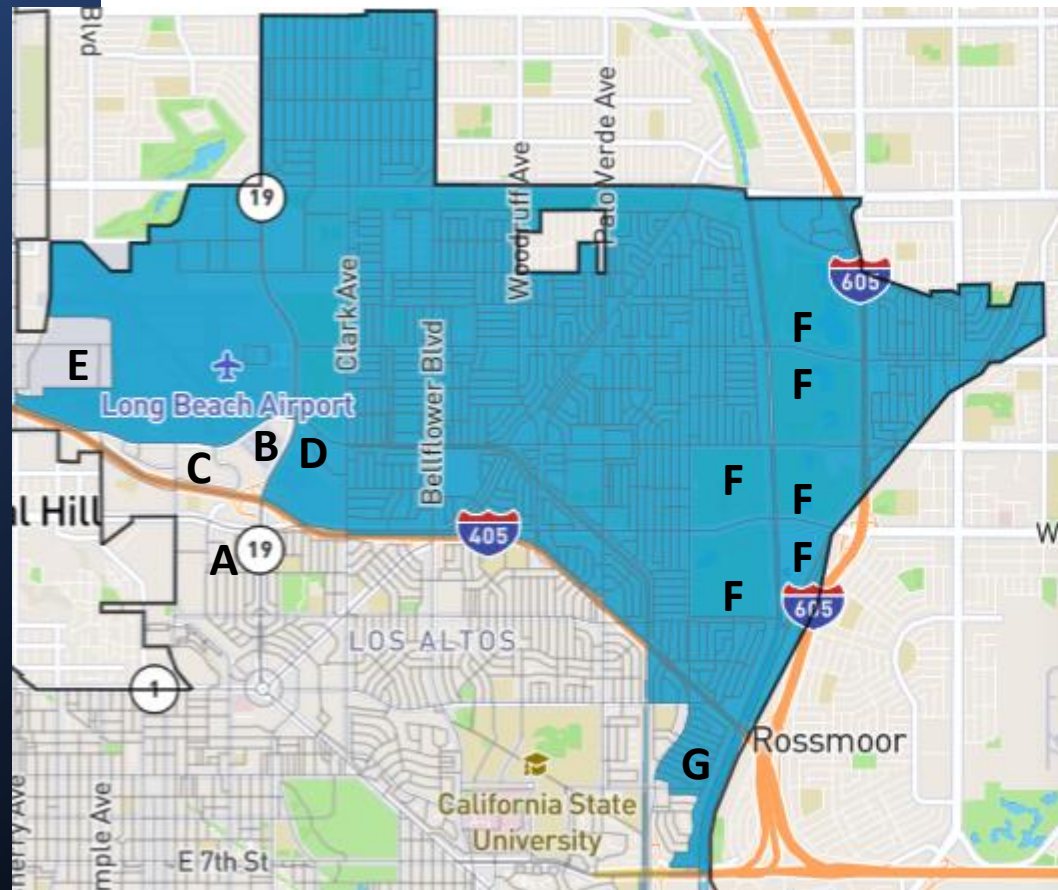
# CURRENT EASTSIDE COUNCIL DISTRICTS



4<sup>TH</sup> “Whale’s Tail” pulled golf course  
And Nature Center into 4<sup>th</sup> district



# PROPOSED: DISTRICT 5 SHARED AIRPORT CONCEPT



## Population

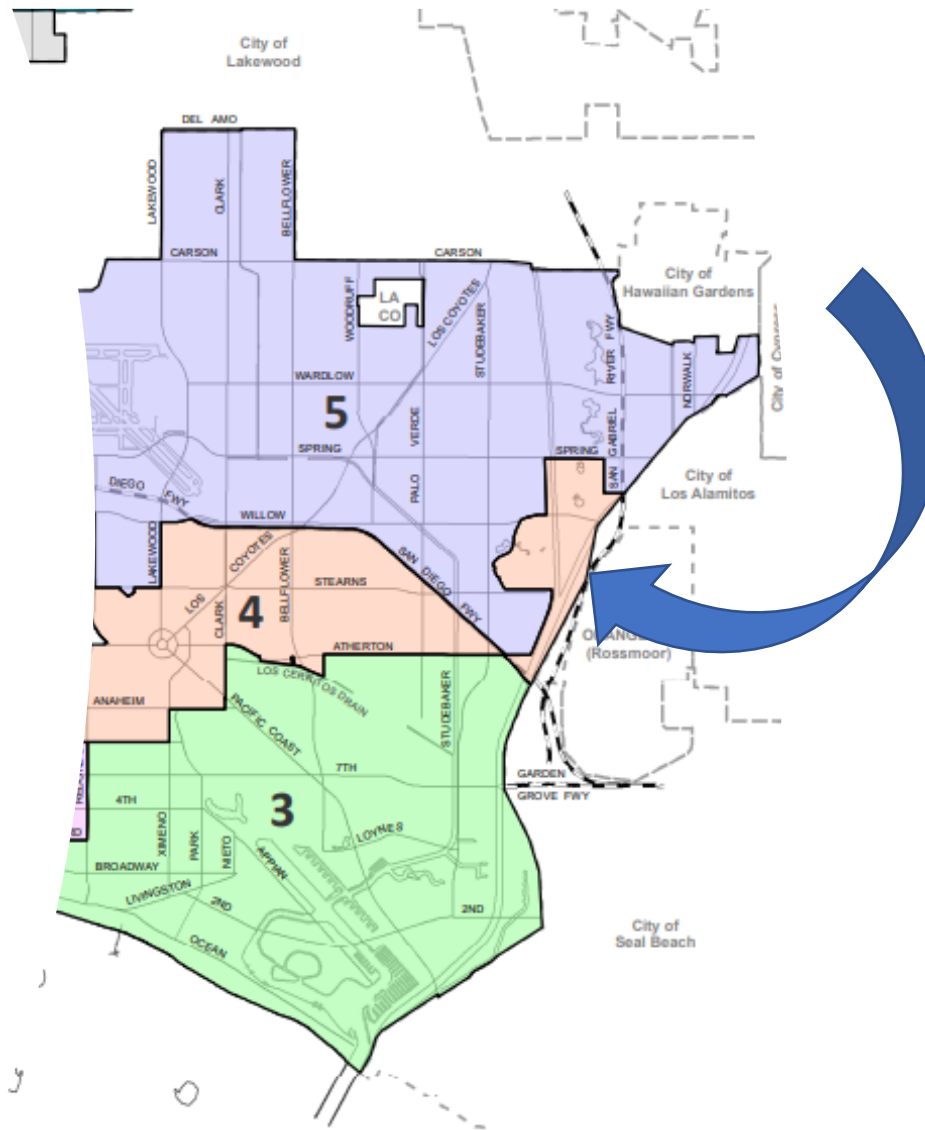
	District 5 shared airport draft 2	Long Beach
Total	51,694	466,742
Hispanic	25.5%	43.3%
White	53%	26.1%
Asian	10%	12.7%
Black	3.6%	12%
Coalition	0%	0%

51860 target population  
– 51694 (this map)  
= 166 under target population

- A) Put Artcraft Manor Neighborhood in the 4<sup>th</sup> (already has 4th on 2 sides)
- B) Add landing runway to the 4<sup>th</sup> (may require split census block but no population involved)
- C) Add airport business south of spring and Lakewood to Cherry to the 4th
- D) Leave Marriott & businesses on Spring Street in the 5<sup>th</sup>
- E) Add Globemaster business area to the 7<sup>th</sup>
- F) Leave all of El Dorado Park in the 5<sup>th</sup>
- G) Add south of 405 fwy east of flood control to 5<sup>th</sup> (or depending on population – add to 3<sup>rd</sup> or 4<sup>th</sup>)

GOAL: INCLUSION AND PARTICIPATION BY  
COMMUNITIES and DISTRICTS THAT  
SURROUND THE AIRPORT

# CURRENT EASTSIDE COUNCIL DISTRICTS



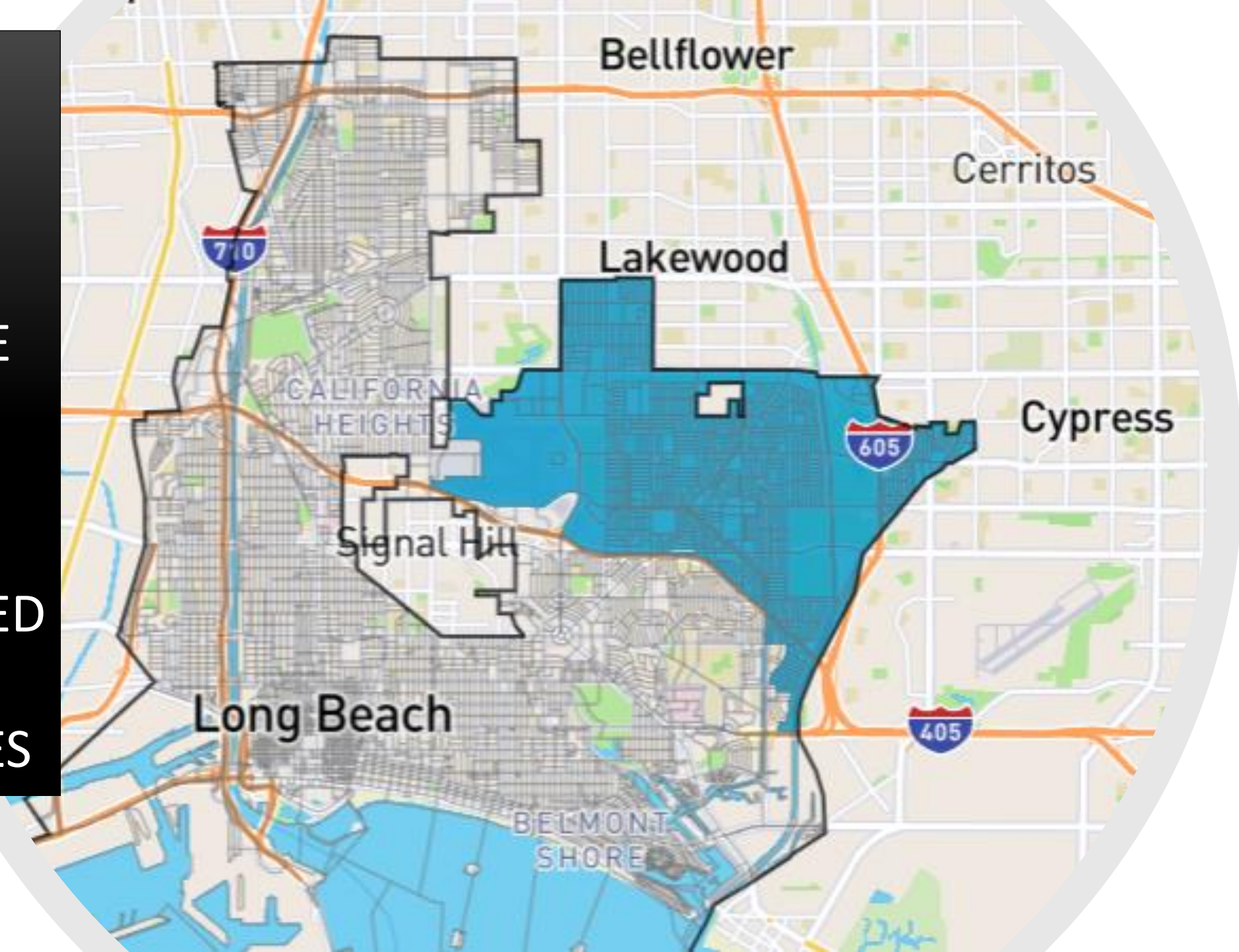
4<sup>TH</sup> district “Whale’s Tail”  
pulled golf course and  
Nature Center into 4<sup>th</sup> district

It looks “gerrymandered” but  
there is no population involved

Clearly it is allowable to draw  
council borders through census  
blocks when there is no  
population – there is precedent



THE  
BIG  
PICTURE  
WITH  
PROPOSED  
CHANGES



**From:** joe mello [mailto:mello.joe@gmail.com]  
**Sent:** Wednesday, September 22, 2021 12:36 PM  
**To:** Redistricting <Redistricting@longbeach.gov>  
**Cc:** JT Nagayama <Jonathan.Nagayama@longbeach.gov>; Bradley Bounds <Bradley.Bounds@longbeach.gov>  
**Subject:** Redistricting Agenda Item 4

**-EXTERNAL-**

Commissioners,

For transparency and to give the community a voice, it is very important that citizens are allowed to comment on the Census Block report AFTER it has been made public. We cannot comment on an agenda Item BEFORE the report has not been made public. Please allow public comments on Agenda Item 4 after the report has been made.

As of this email at 12:30 pm this is the only information under Item 4 is in the screenshot below

Regards.  
Joe Mello

The screenshot shows a web browser window displaying the 'Legislation Details (With Text)' page for item 21-112RC. The page header includes the City of Long Beach logo and address: 411 West Ocean Boulevard, Long Beach, CA 90802. The main content area displays the following information:

- File #:** 21-112RC
- Version:** 1
- Name:** 092221-RC-Redistricting Criteria Report
- Type:** RC-Agenda Item
- Status:** In Committee
- File created:** 9/16/2021
- In control:** Long Beach Independent Redistricting Commission
- On agenda:** 9/22/2021
- Final action:**
- Title:** Recommendation to receive and file a report on redistricting criteria relating to census blocks.
- Sponsors:**
- Indexes:**
- Code sections:**
- Attachments:**

Date	Ver.	Action By	Action	Result
Recommendation to receive and file a report on redistricting criteria relating to census blocks.				
Approve recommendation.				

The bottom of the screenshot shows the Windows taskbar with the date and time: 12:33 PM, 9/22/2021, and the weather: 87°F Sunny.

**From:** Rae Gabelich [mailto:longbeachneighborhoodsfirst@gmail.com]  
**Sent:** Wednesday, September 22, 2021 2:43 PM  
**To:** Redistricting <Redistricting@longbeach.gov>  
**Subject:** Questions from last week

**-EXTERNAL-**

Staff and Commissioners -

#1 - Will your map drawing process be done in public view or closed sessions?

#2 - Will your debates be available to the public?

Please respond to [hoorae1@aol.com](mailto:hoorae1@aol.com)

Thanks for your help in understanding this process.....

Rae Gabelich