

A photograph of a city street scene. In the foreground, a young child with blonde hair, wearing a yellow helmet and a white shirt, is riding a skateboard away from the camera. The child is wearing pink shorts and white sneakers. The street is paved with asphalt and has yellow lane markings. In the background, several other people are visible, including a man on a bicycle and a group of pedestrians. The scene is set in an urban environment with trees and buildings in the distance.

# Mobility Programs and Projects Update Sustainable City Commision - July 22, 2021

Department of Public Works  
Mobility Programs Division

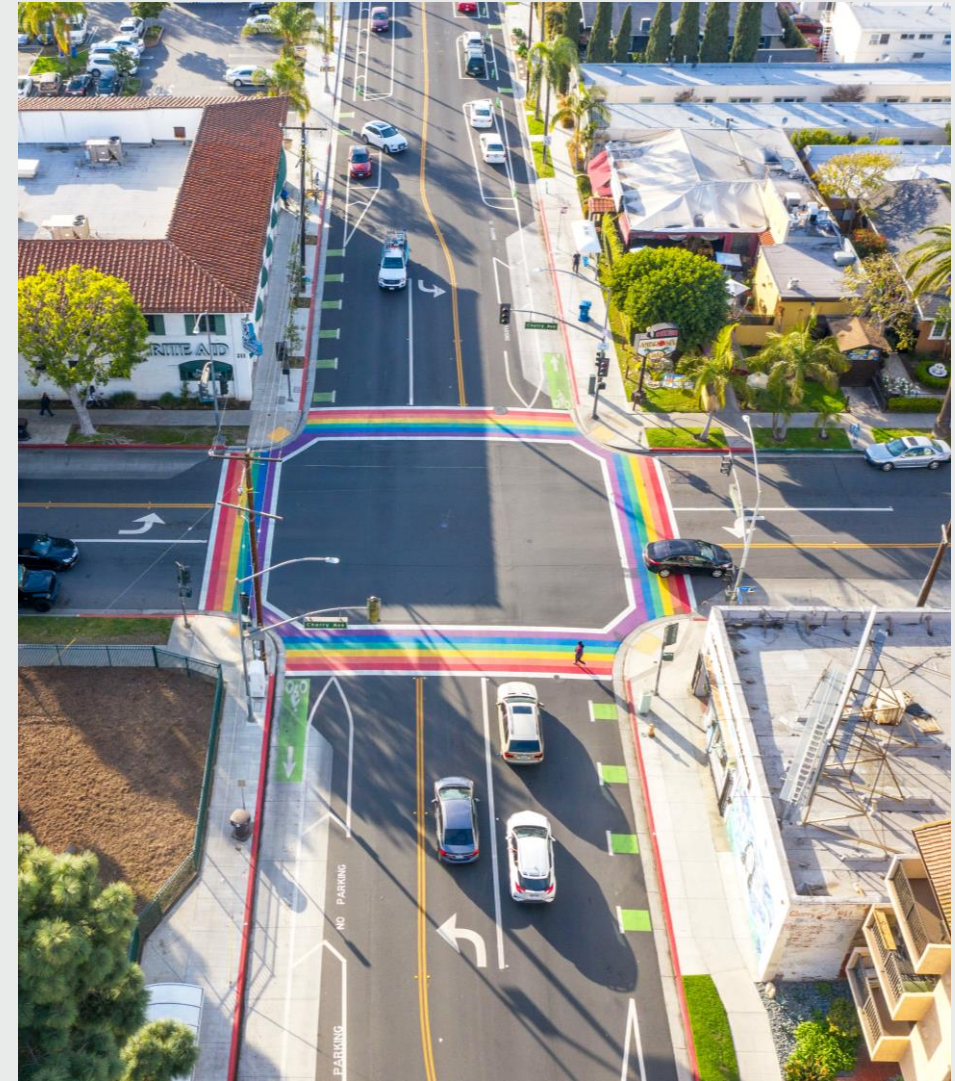


# Mobility Programs and Projects

## About the Mobility Programs Division

The Mobility Programs Division plans and promotes active transportation through infrastructure projects, programs, and events. To us all active transportation, whether by bike, foot, board, skate, or scooter, is a vital component to our city's transportation network.

We work to maximize the health and safety of all road users no matter how they choose to get around.



# COVID-19 Open Streets

## Business Open Streets

- Launched May 2020
- 120 temporary parklets deployed
  - No fee for application
  - Water-filled barricades provided at no cost
- 65% of surveyed businesses noted an increase in foot traffic
- 90% of surveyed businesses hope to make their parklets permanent





# COVID-19 Open Streets (cont.)

## Neighborhood Open Streets

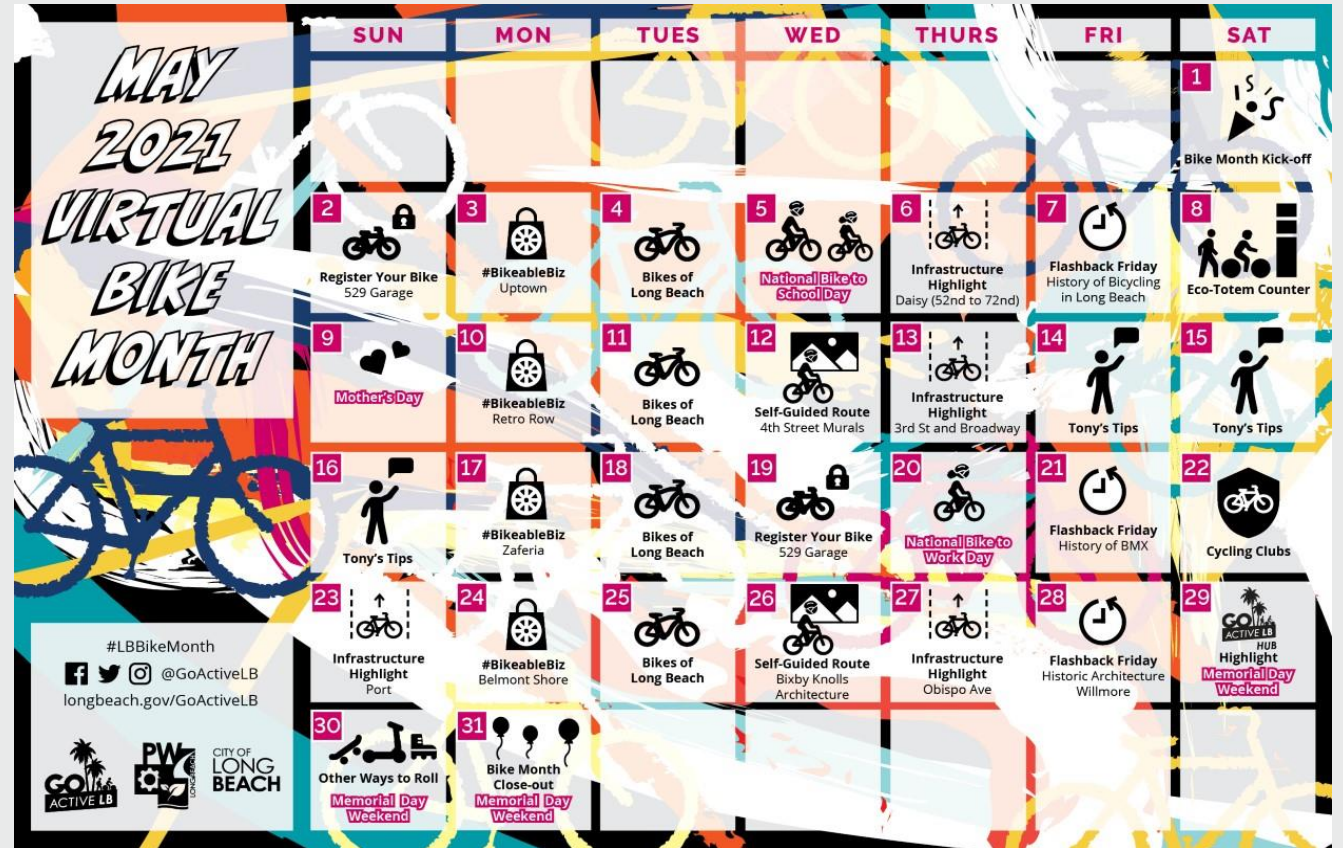
- Signage deployed to slow speeds and deter cut-through traffic
- 15 streets deployed in neighborhoods with less access to parks
- Department of Parks, Recreation and Marine utilize 8 of the streets for a Mobile Recreation Program



# Virtual Engagement During COVID-19

## Bike Month Engagement

- Self-guided tours
- Infrastructure highlights
- Bikes of Long Beach
- Bike-to-Biz Days
- Bicycle Safety Tips
- Cycling Clubs
- Free bike registration
- Promote other forms of active transportation



## Bike and Skate Boom

- 62% increase in bike sales between January – October 2020
- 85% of Americans perceive bicycling as a safer mode compared to public transportation
- 90% included biking in their top 3 primary modes of transportation within 5 miles
- 63% of Americans feel bike riding helps to relieve stress/anxiety
- 144% increase in e-bike sales
- Roller skate retailer Moxi saw a 1,000% increase in sales

### The Pandemic Bike Boom Is Here to Stay

Activity and sales data suggest that there are still more cyclists than ever before



Los Angeles Times

LIFESTYLE

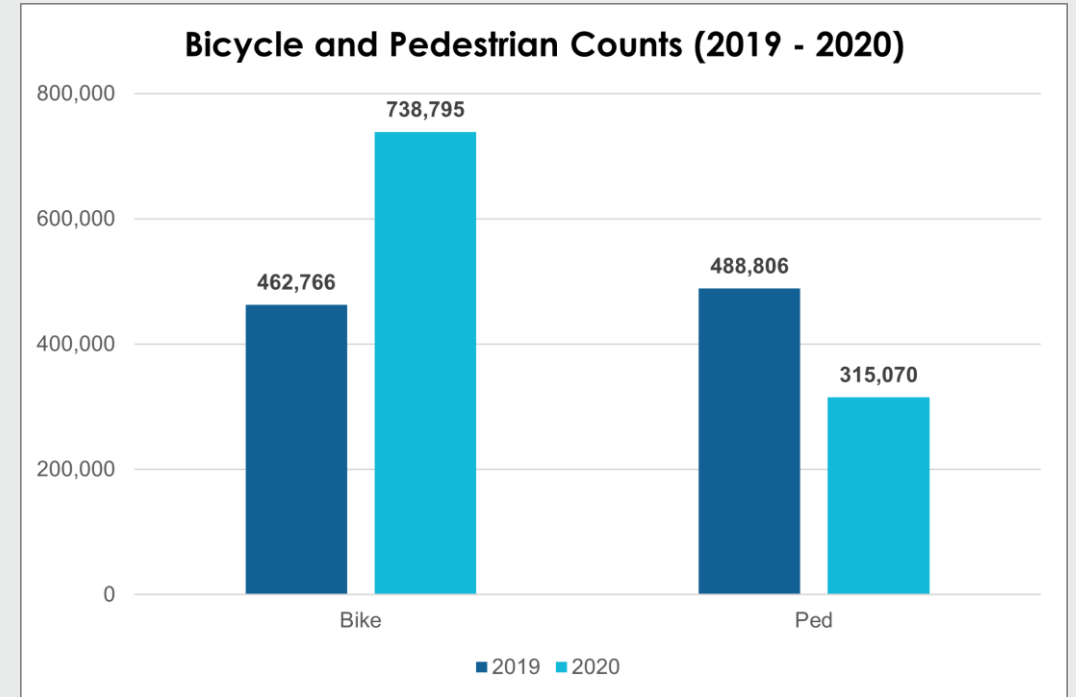
Wheel good fun: How old-school roller skates became the perfect pandemic pastime





## Eco-Totem Data (Belmont Pier Bike Path)

- Local data supports general trends of bicycle ridership and sales
- 60% increase in bicycling between 2019 – 2020
- 36% decrease in walking between 2019 – 2020
- 80% increase in bicycling between Jan – Jun from 2019 to 2021
- 34% decrease in walking between Jan – Jun from 2019 to 2021



# Bicycle Infrastructure

## Bike Master Plan Recommended Bikeways

- Protected Bike Lanes
  - Bicyclist situated between sidewalk and vertical buffer
  - Roadways with high volumes and/or speeds
- Bike Boulevards
  - Utilizes traffic calming on local streets
  - Bicyclists and drivers share road



**PROTECTED BIKE LANE**



**BICYCLE BOULEVARD**



# Bicycle and Pedestrian Projects

## Forthcoming Projects

- Education and Demonstrations
  - Traffic Safety Campaigns (e.g., All Intersections Are Crosswalks)
  - Artesia Boulevard Go Human Complete Streets Demonstration
  - South Street Quick-Build Bike Improvements
- Pedestrian Projects
  - Rectangular Rapid Flashing Beacon (RRFB) at 18 high-risk locations
  - Anaheim Street Pedestrian Improvements
- Bicycle and Pedestrian Projects
  - Artesia Great Boulevard
  - Orange Ave Backbone Bikeway
  - Queens Way Drive/Pier J Bikeway (Recently completed)
  - Obispo Ave Bike Lanes (Recently completed)
  - Citywide Complimentary Bike Racks (Ongoing)



# Caltrans ATP Cycle 5 and MAT Grant Awards

## 2021 Grants

- Caltrans Active Transportation Program (ATP)
  - Downtown Walkable Corners
  - Pacific Avenue Cycle Track
  - Pine Ave Bicycle Boulevard
- Metro Active Transportation Program (MAT)
  - 6th Street Cycle Track



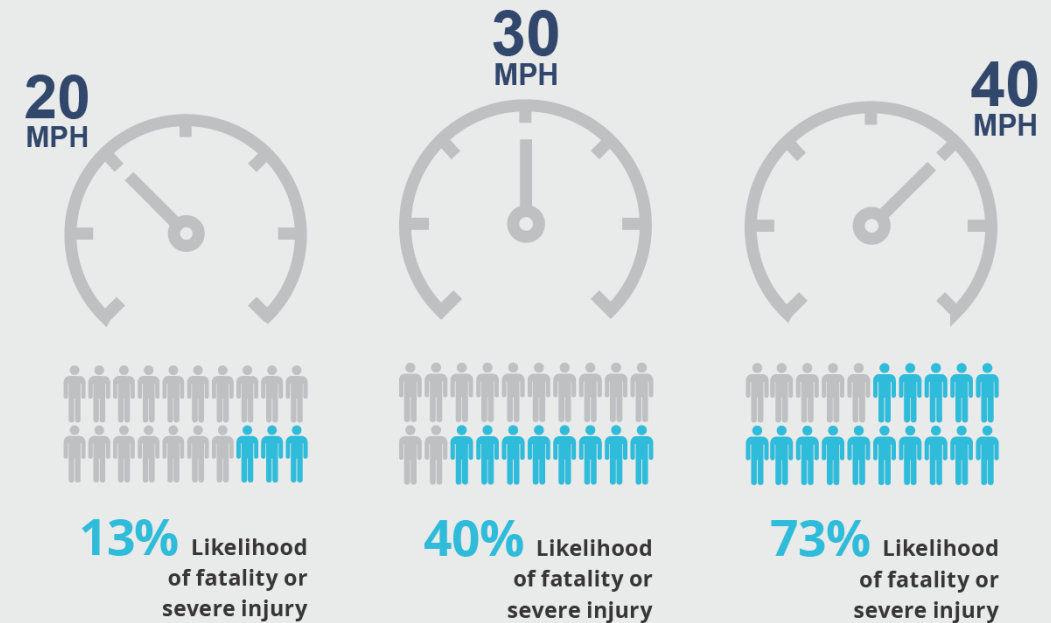


# Safe Streets Long Beach

## Overview

- Safe Streets LB Vision Zero Action Plan adopted July 2020
- Traffic fatalities claimed more lives in Long Beach than homicides last year.
  - There were 50 traffic fatalities in Long Beach in 2020 and 36 homicides.
- 2020 saw increased rates of traffic fatalities throughout the country.
  - Fatalities increased 67% between 2019 and 2020 in Long Beach

Figure 4. How Speed Kills - Relationship between Motor Vehicle Speed to Pedestrian Fatalities and Serious Injuries



**Pedestrians struck by car at 40 mph or higher  
73% likely to have fatal or severe injury**

# Safe Streets Long Beach

## Where are serious collisions occurring?

- Concentration of high-injury corridors in Central/Downtown Long Beach
- Forthcoming safety improvement projects on high-injury corridors:
  - Anaheim Street Ped Improvements
  - Long Beach Blvd Ped Improvements
  - Artesia Great Boulevard
  - 6th Street Cycle Track
  - Pacific Avenue Cycle Track

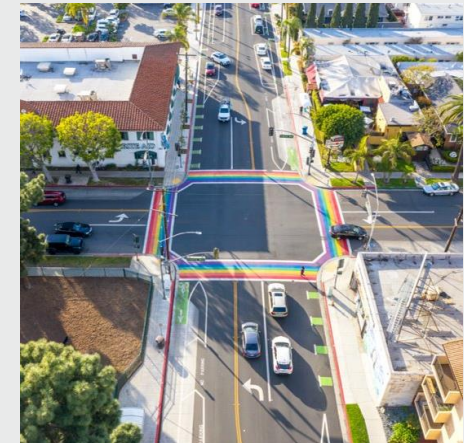




# Safe Streets Long Beach

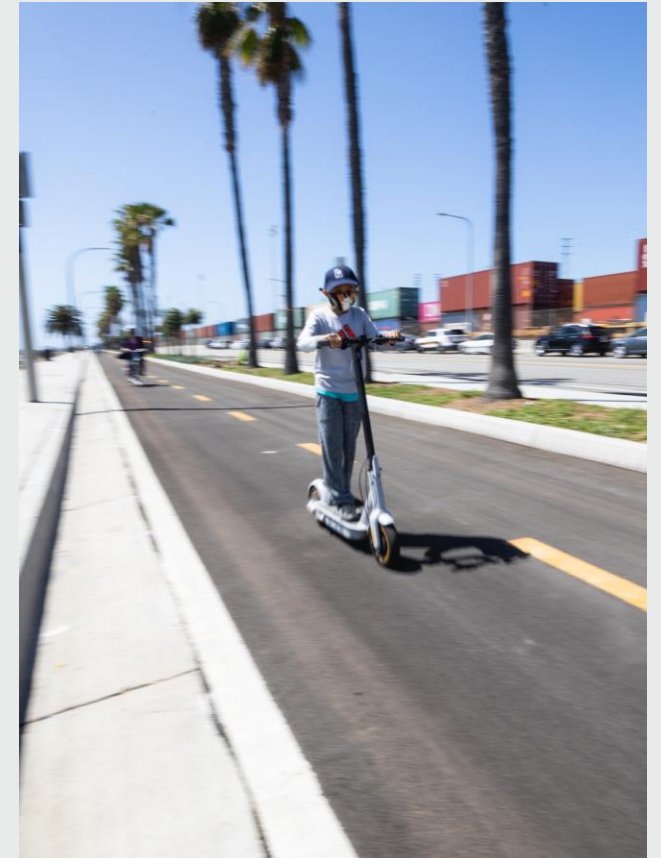
## Keystone Actions

1. Resources
2. Speed
3. Design
4. Education
5. Data
6. Partnerships
7. Equity



## Shared Micro-Mobility Permit Program

- Permit program launched in August 2020
  - Three operators launched in 2020 (Lime, Razor, and Bird)
  - Fourth operator added in January 2021 (VeoRide)
  - Program allows for 2 e-bike and 4 e-scooter permits
- Operator permit and per device fees
  - Permit fee is \$25k
  - Permits are issued for 12 months
  - \$100 per device/vehicle





## Trip Data (January to June 2021)

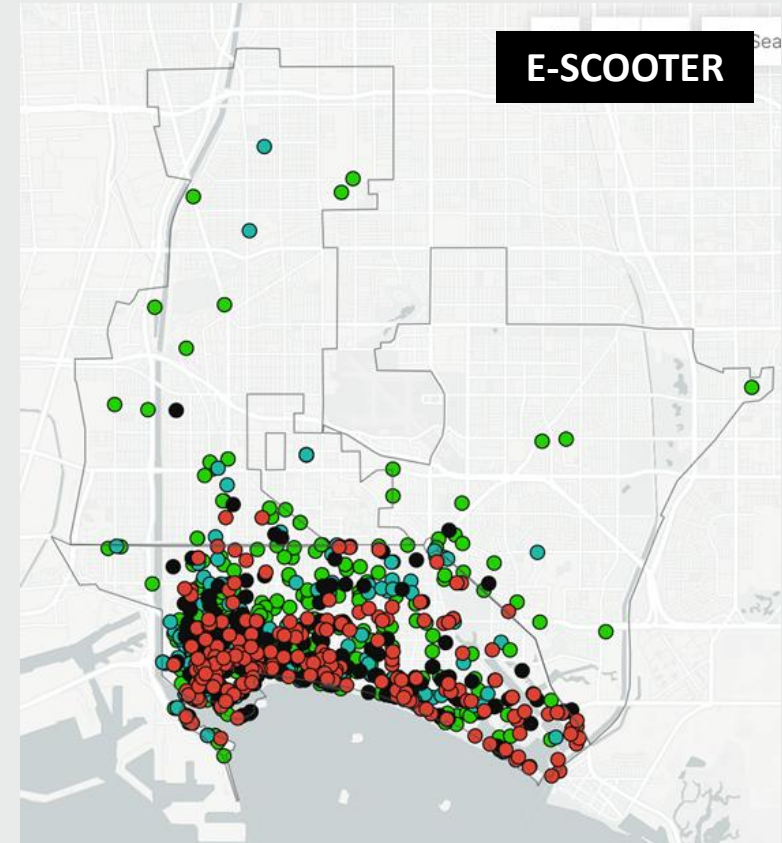
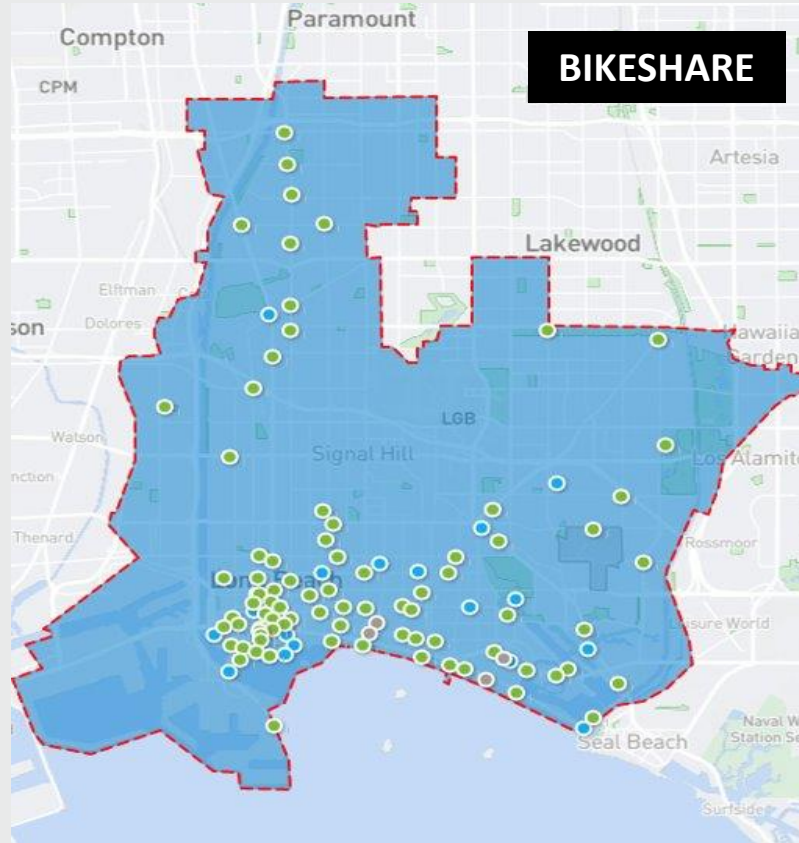
- Bikeshare
  - Average ride time: 8 minutes
  - Total miles: 76,086
  - Total trips: 24,228
- E-Scooter
  - Average trip length: 1.3 miles
  - Total miles: 454,734
  - Total trips: 398,244



# Micro-Mobility (cont.)

## System Area and Fleet Information

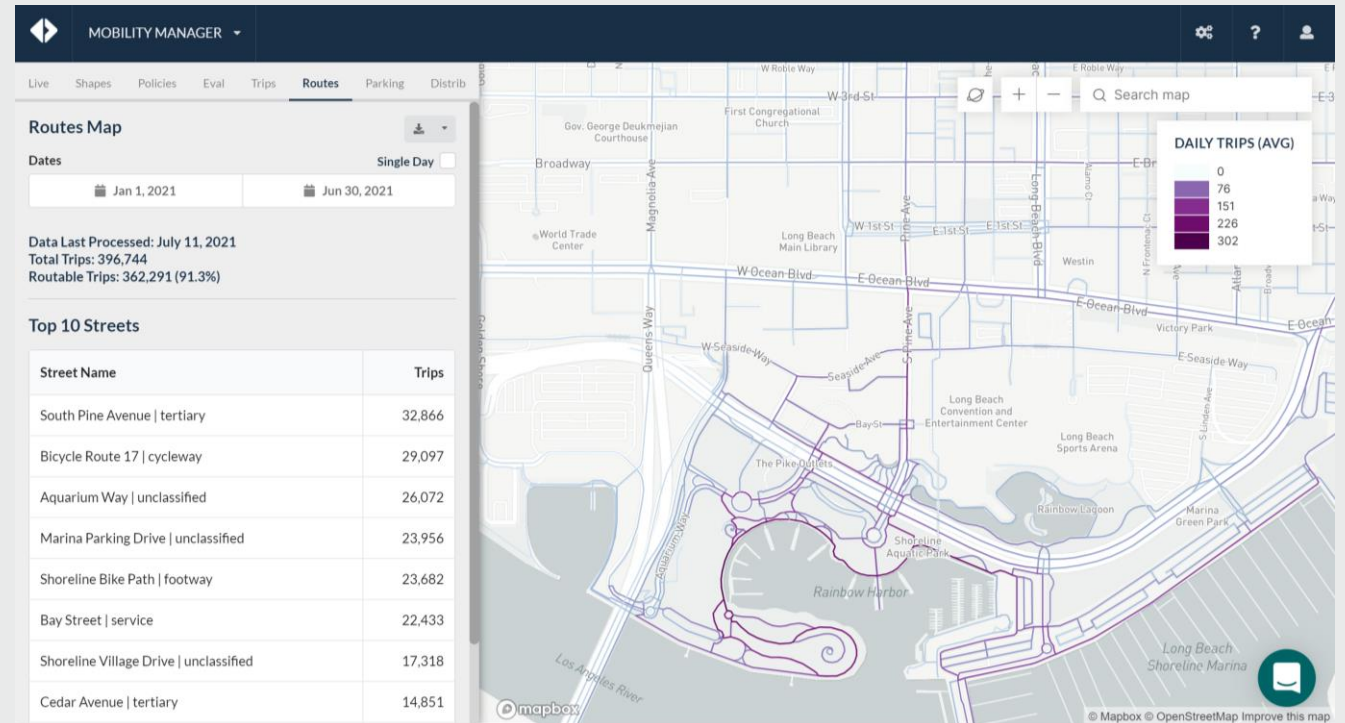
- Bikeshare
  - 668 total bicycles
  - 87 hubs (8 reopening at CSULB)
  - Operated by Pedal Movement
  - 1,450 bicycles by 2022
- E-Scooters
  - 500 scooters per operator (2,000 vehicles total)
  - Operators: Bird, Razor, Lime, and VeoRide
  - Future vehicle increase up to 1,000 per operator





## Data Management Tool

- Populus Data Aggregator
  - Vehicle trip counts
  - Geofencing rules
  - Fleet size management
  - Popular routes
  - Heatmap
  - Daily dashboard
- New Features
  - Real-time GPS data
  - Policies and rules for operators



## Micro-Mobility Education

- Collateral on E-Scooter Laws
  - No riding on beach bike path
  - No double-riding
  - No riding on private property
  - How to properly park a scooter
  - Minimum age to operate a scooter
- Sidewalk Decals
  - Drop-zone markers
  - Keep sidewalk clear (w/ DHHS)







Thank you

**Fern Nueno, Mobility Programs Officer**

[Fern.Nueno@longbeach.gov](mailto:Fern.Nueno@longbeach.gov)

Tony Cruz, Community Programs Specialist

Rachel Junken, Transportation Planner III

Ricardo Light, Transportation Planner I

Thyda Uy, Transportation Planning Intern