

ATTACHMENT C

Date: April 20, 2021

To: Megan Zabel, Commander, North Division

From: Abraham Mercado, Patrol Resource Officer, North Division

Subject: CPTED: 3917 LONG BEACH BLVD (Fire Station No. 9)

This memorandum is in response to a Crime Prevention Through Environmental Design (CPTED) assessment for Fire Station No. 9 (3917 Long Beach Blvd). The Long Beach Police Department has made the following recommendations for public safety, crime prevention for this location.

Location

- The project for 3917 Long Beach Blvd is to conduct a security assessment of Fire Station No. 9. Currently, the proposed project involves the demolition of the existing, city-owned Fire Station. The project includes two potential courses of action, Option A and Option B, both involving the demolition of the 5,548-square foot City-owned Fire Station No. 9 and eventual development on the site. Upon demolition, the site would be secured with the City-approved fencing and the placement of mulch to ensure adequate site drainage.

I. Site specific recommendations

- Installation of fencing that won't obstruct lines of sight and promotes good visibility.
- Properly install fencing around the property to promote territorial control and define property lines.
- Remove any obstructions within the property that would hinder a clear line of sight and promote hidden places.
- Installation of motion censored and/or solar-powered lighting.
- Adding No trespassing signage throughout the property.
- Trimming and maintenance of landscaping to promote better sightline and avoid dark spots.

II. Lighting - Used for illumination of human activity and security.

- Installation of lighting system to enhance police ability for surveillance.
- Use LED lights for exterior lighting.
- LED "white light" lighting enhances video surveillance.
- Luminance uniformity should be used to avoid pools of darkness.
- Property selection of lighting to minimize glare, light pollution, and light trespass.
- Security associated signs should be illuminated and/or reflective.

CPTED- Fire Station No. 9
April 20, 2021
Page 2

III. Landscaping - Defines territory, controls access and creates ownership.

- All landscaping should follow the CPTED standard 2ft by 6ft rule, with bushes not to exceed two feet in height and tree canopies a minimum of 6ft off the ground (where applicable).
- Removal of vegetation that can obstruct visual sight from the public and police.
- Care should be taken in the selection and placement of new landscape to prevent the creation of hiding places.

VI. Maintenance - Allows for the continued use of space for its intended purpose. Serves as an additional expression of ownership. Prevents reduction of visibility from landscaping overgrowth and obstruction or inoperative lighting.

- Timely repair of vandalized, worn, or damaged features.
- Proper trimming of plant growth and landscape.
- Maintain lot and surrounding area to a high standard.
- Schedule a maintenance plan to pick up litter and trash.

CPTED Disclaimer

A Long Beach Police Department Patrol Officer who has completed training at the National Institute of Crime Prevention has conducted this security survey. The information contained herein is based on guidelines set by the National Institute of Crime Prevention and the observations of the Officer conducting the survey. This survey is intended to assist in improving the overall level of security only. It is not intended to imply the existing security measures are inadequate, or the proposed security measures are absolute or perfect.

All new construction or retrofits should comply with existing building codes, zoning laws, and fire codes. Prior to installation or modifications, the proper licenses and variances should be obtained, and inspections should be conducted by the appropriate agency.

If you require further information or need clarification, please contact Officer A. Mercado at abraham.mercado@longbeach.gov.

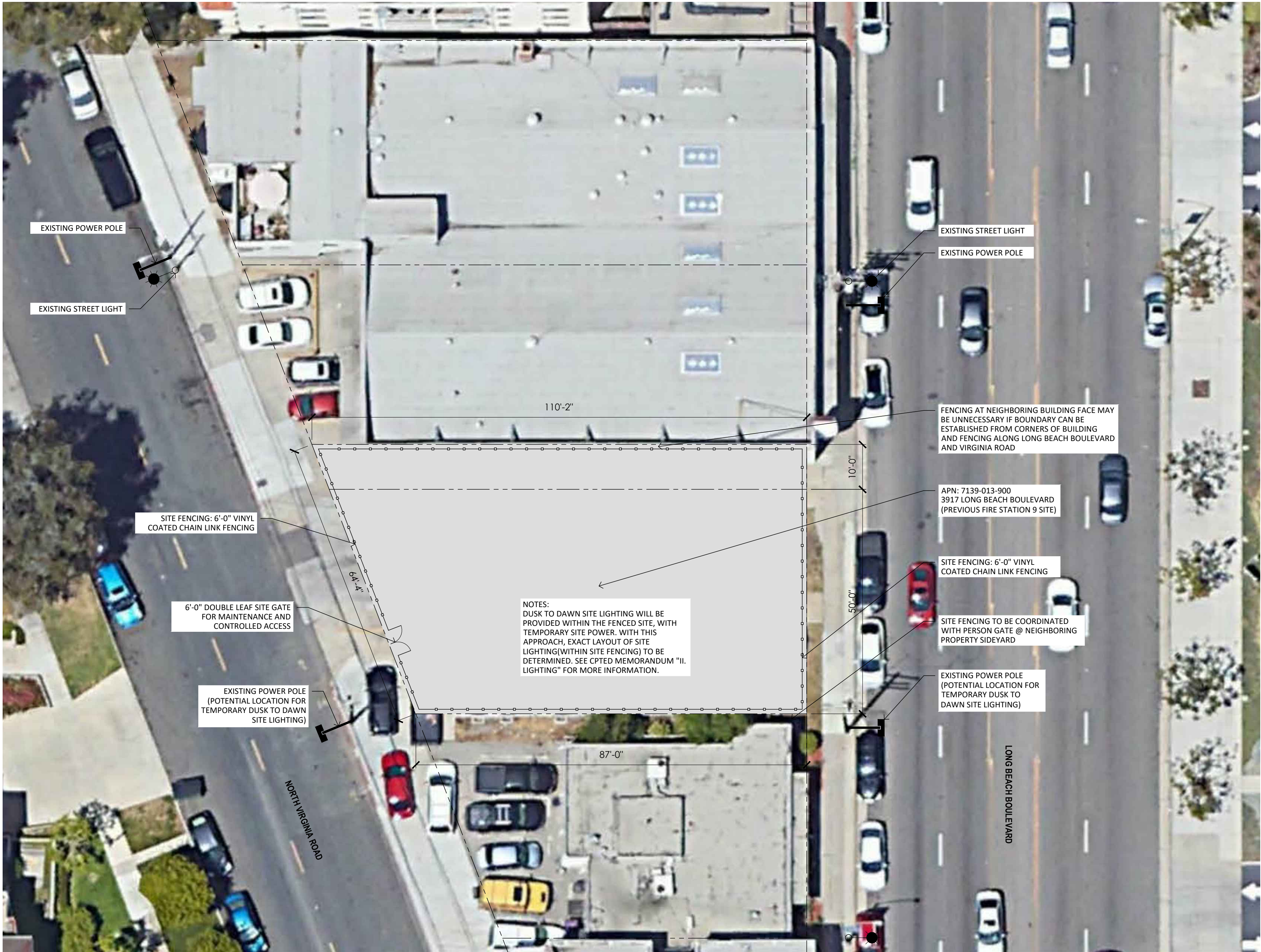
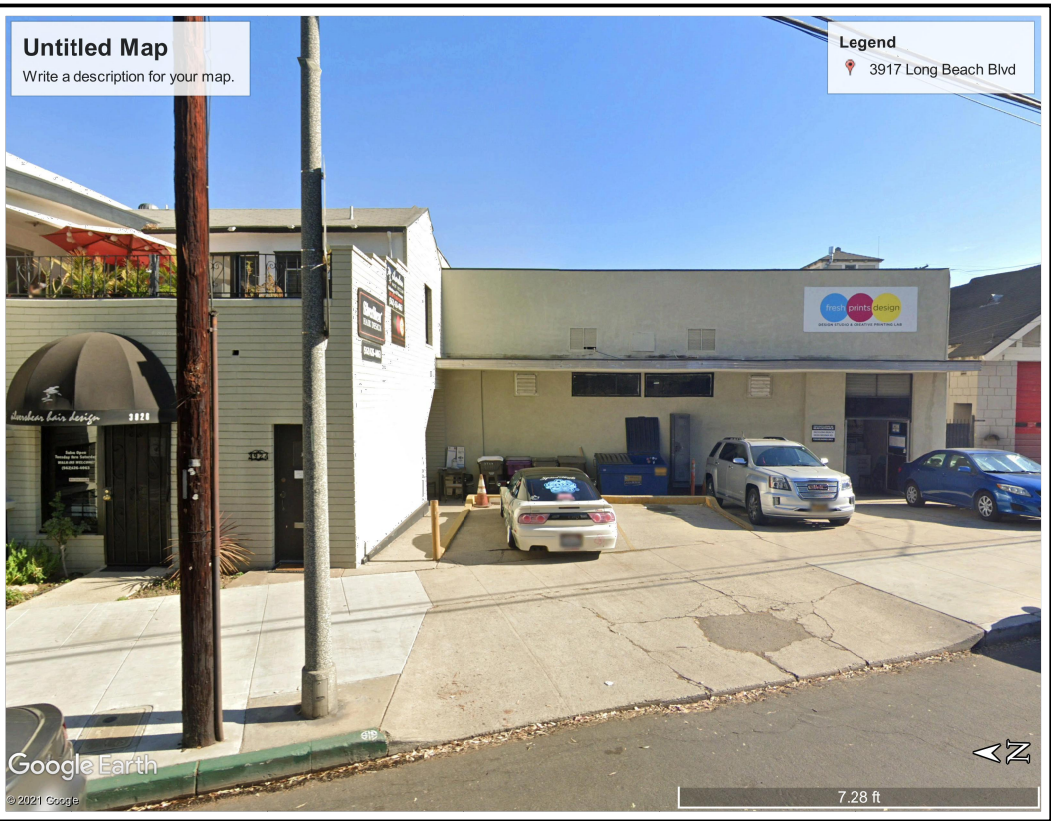
State Statute

This assessment contains sensitive site specific information. Precautions should be taken to ensure all contents are stored and/or destroyed in a manner that prevents unauthorized access.

California Government Code 6250-6270.5
- Prohibits disclosure of sensitive information that would potentially disclose security related vulnerabilities to the public, of a given location/facility.

Am:am

CPTED



FS 9: 3917 LONG BEACH BLVD
SCALE: 1/16" = 1'-0"

LEGEND:



EXISTING POWER POLE



EXISTING STREET LIGHT