

MAC Report

May 2021



SUBMITTED BY THE MARINE BUREAU



TABLE OF CONTENTS

1. Marinas and Waterways
2. Beaches and Waterways
3. Marine Maintenance Work Order Graphs
4. Pump Out Inspection Report
5. Tide Table



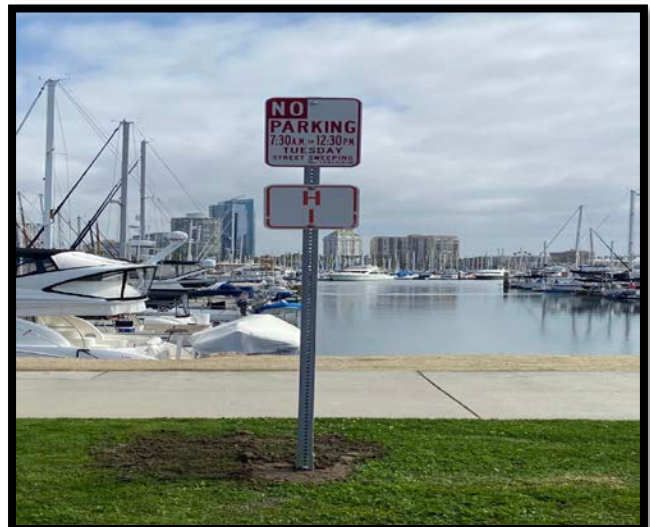
MARINAS AND WATERWAYS

Accomplishments

- ❖ Staff completed Davie's Launch Ramp slurry seal and restripe.
- ❖ Staff completed all bright work in Basin's 1, 2 & 3.
- ❖ Staff completed painting the exterior of Lifeguard Station 21.
- ❖ Staff completed the replacement of the roof at Station 31.
- ❖ Staff completed all Gangway roller bearings in Shoreline Marina.
- ❖ Staff rebuilt first pump out on Gangway A.
- ❖ Staff completed changing all roller bearings for DTM's gangways.
- ❖ Staff completed training additional staff members to obtain NCCCO crane certification.

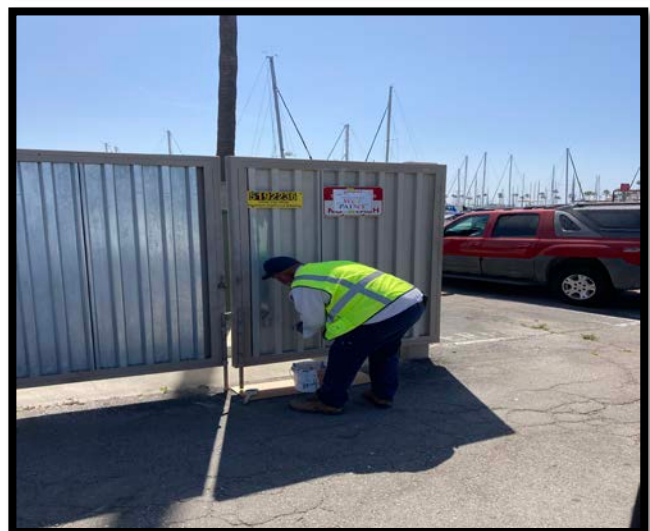
Projects in the works

- ❖ Staff is in the process of replacing all the damaged and missing signs throughout the Long Beach Shoreline Marina. Staff has already replaced all the "Gangway" and "No Visitor" signs. 90% completed
- ❖ Staff is in the process of retrofitting the existing twelve (12) booster pumps from a wet system to a dry fire suppression system in the Long Beach Shoreline Marina. 50% completed
- ❖ Staff is in the process of making improvements to the Alamitos Bay Marina office including: painting the interior of the building. 50% completed
- ❖ Staff is in the process of inspecting and tightening all the loose fingers throughout the Long Beach Shoreline Marina. 40% completed
- ❖ Staff is in the process of inspecting and replacing all the damaged gangway water supply lines throughout Long Beach Shoreline Marina, as needed. 45% completed



MARINAS AND WATERWAYS

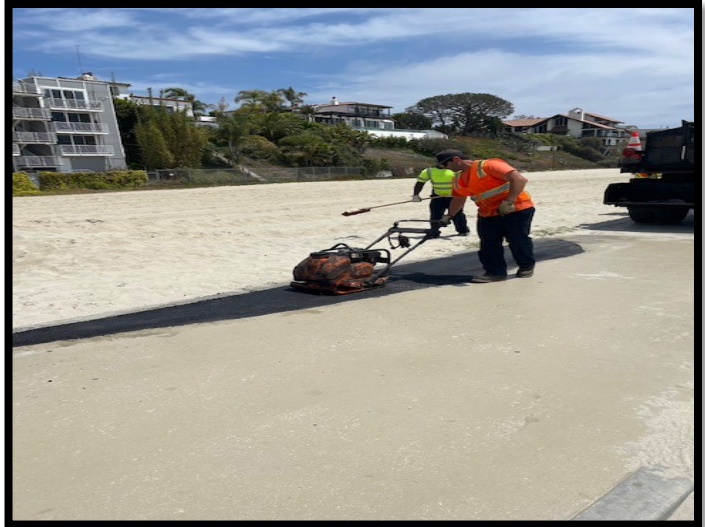
- ❖ Staff is in the process of repairing the restroom plumbing throughout Long Beach Shoreline Marina. 35% completed
- ❖ Staff is in the process of repairing concrete fingers throughout Long Beach Shoreline Marina. 10% completed
- ❖ Staff is in the process of repairing all damaged concrete behind Spinnaker Bay near the seawall. 10% completed
- ❖ Staff is in the process of replacing all electrical components (breakers, receptacles, etc.) inside the pedestals located throughout Shoreline & Rainbow Harbor Marina's. 20% completed
- ❖ Staff is in the process of replacing exterior doors at the Belmont Pool office. 50% completed
- ❖ Staff is in the process of installing two (2) new power pedestals on long dock North. 50% completed
- ❖ Staff is in the process of installing pony gates throughout Basin 2. 80% completed
- ❖ Staff is in the process of fabricating new fencing at boatowner's restroom D-6. 50% completed
- ❖ Staff is in the process of installing Teflon cart stops in Basin 1,2,3 and 4 95% completed
- ❖ Staff is in the process of painting memorial benches in ABM. 25% completed
- ❖ Staff is in the process of installing two isolation valves for all 31 Gangway's in Shoreline Marina. 5% completed
- ❖ Staff is in the process of replacing old and adding where needed "Boat owner parking only" signs as well as installing all new Bike route signs in the City. 85% completed
- ❖ Staff is in the process of installing pony gates throughout Basin 3. 20% completed
- ❖ Staff is in the process of installing two isolation valves for all 33 Gangway's in Shoreline Marina. 40% completed
- ❖ Staff is in the process of replacing old and adding where needed "Boat owner parking only" signs as well as installing all new Bike route signs on Mole Road Lot. 85% completed
- ❖ Staff is currently preparing and painting all trash enclosure doors on Mole road lot. 5% completed



BEACHES AND WATERWAYS

Accomplishments

- ❖ Beach Maintenance staff removed over 106 tons of trash and debris from the beaches and inner bays.
- ❖ Beach Maintenance staff removed trash and debris from the beach waterline.
- ❖ Beach Maintenance staff serviced 200 trash receptacles during the month of May.
- ❖ Beach Maintenance staff built up and maintained the berm on the East Peninsula beach between 62nd – 72nd place and along the bayside.
- ❖ Beach Maintenance staff swept the bike/pedestrian path.
- ❖ Beach Maintenance staff conducted weekly cleanups of several homeless encampments throughout the beach areas.
- ❖ Beach Maintenance staff raked and cleaned throughout beach areas.
- ❖ Beach Maintenance staff removed Lomandra grass from the Dolphin Fountain and planted Liriope Muscari.
- ❖ Beach Maintenance staff planted Lomandra grass in the Shoreline medians.
- ❖ Beach Maintenance staff planted succulents in the planters at Station 35 entrance.
- ❖ Beach Maintenance staff installed new irrigation clock at Basin 6 North.
- ❖ Beach Maintenance staff installed sprinkler heads at Overlook Park.
- ❖ Queensway Bay staff conducted a cleaning of all 60 basket filters in the Rainbow Lagoon; six days per week, twice per day. Staff replaces and cleans all 60 baskets once a month.
- ❖ Queensway Bay staff conducted daily removal of water borne debris and algae in the Rainbow Lagoon, Rainbow Harbor Marina and Long Beach Shoreline Marina using hand nets and a small skimmer boat.
- ❖ Queensway Bay staff removed trash from docks, three times per week.



BEACHES AND WATERWAYS

- ❖ Queensway Bay staff conducted daily cleaning and maintenance of all trash skimmers on the docks, seven days per week.
- ❖ Queensway Bay staff conducted monthly inspections on all docks throughout Rainbow Harbor Marina.
- ❖ Queensway Bay staff serviced all sewage pumps on the commercial docks.
- ❖ Queensway Bay staff conducted weekly encampment posting and cleanups.
- ❖ Queensway Bay staff cleaned and sanitized the public elevator near the bird cage.
- ❖ Queensway Bay staff completed 187 work order and 13 Go Long Beach request for the month of May.
- ❖ Queensway Bay staff coordinated the fence replacement at Horn Blower/Catalina Express parking area.
- ❖ Queensway Bay staff removed trip hazards throughout public walking areas.
- ❖ Queensway Bay staff removed a section of storm debris containment system for off season storage.
- ❖ Queensway Bay staff replaced the soap dispensers in the public restrooms throughout Rainbow Harbor Marina.
- ❖ Queensway Bay staff replaced the urinal partition in the Lighthouse restroom.
- ❖ Queensway Bay staff conducted daily graffiti removal of the entire Rainbow Harbor area, including the Queensway bridge bike path and the Pier Point parking lot.
- ❖ Queensway Bay staff painted all benches and trash cans at the Birdcage and Promenade Bridge.
- ❖ Queensway Bay staff performed routine maintenance on the Wave and Dolphin Fountain.
- ❖ Queensway Bay staff conducted routine maintenance on the Wave Fountain filter pumps.



BEACHES AND WATERWAYS

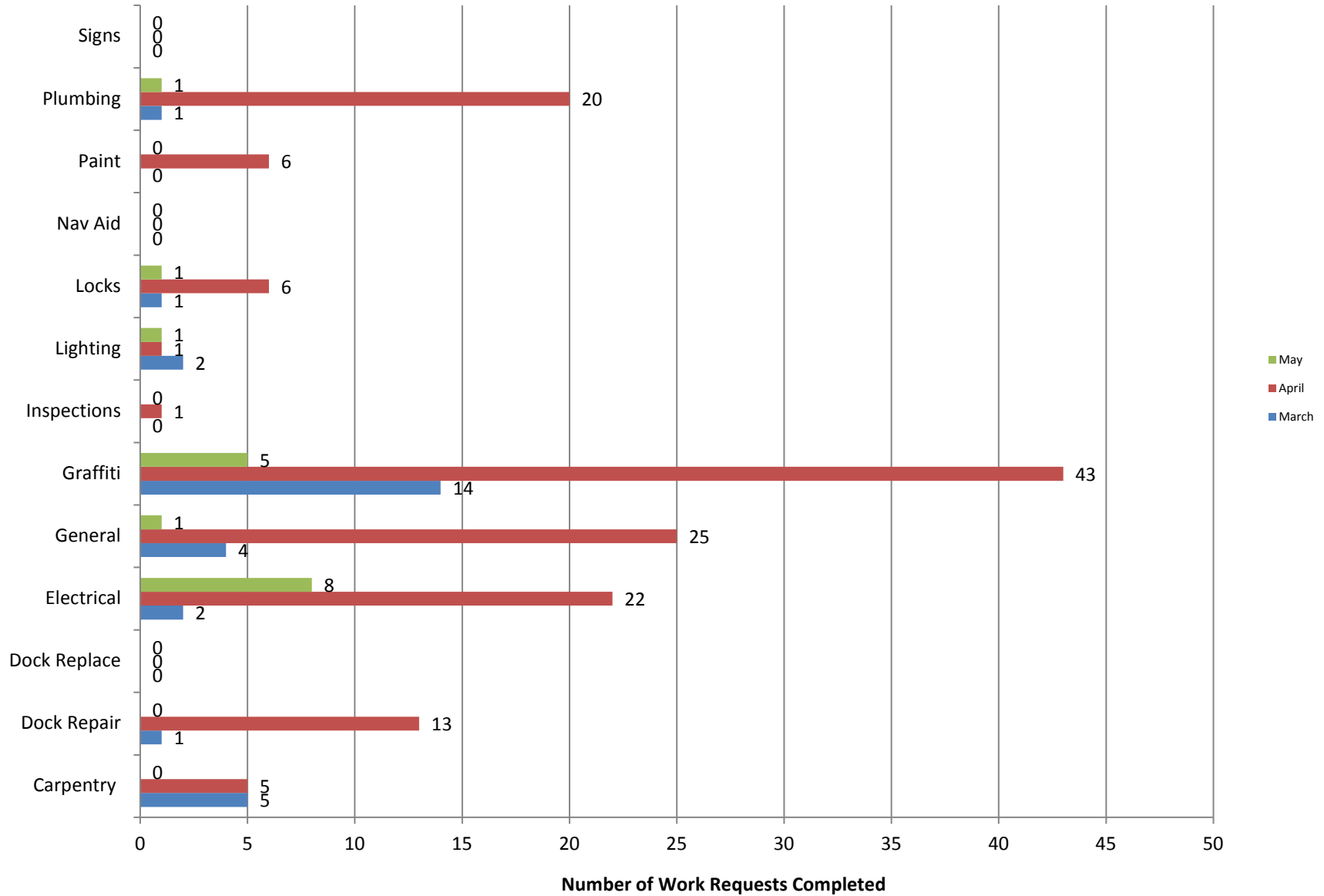
- ❖ Queensway Bay staff power washed the exterior of the Wave Fountain bi-weekly.

Projects in the works

- ❖ Beach Maintenance staff is continuing the process of rebuilding sections of the peninsula where erosion occurs.

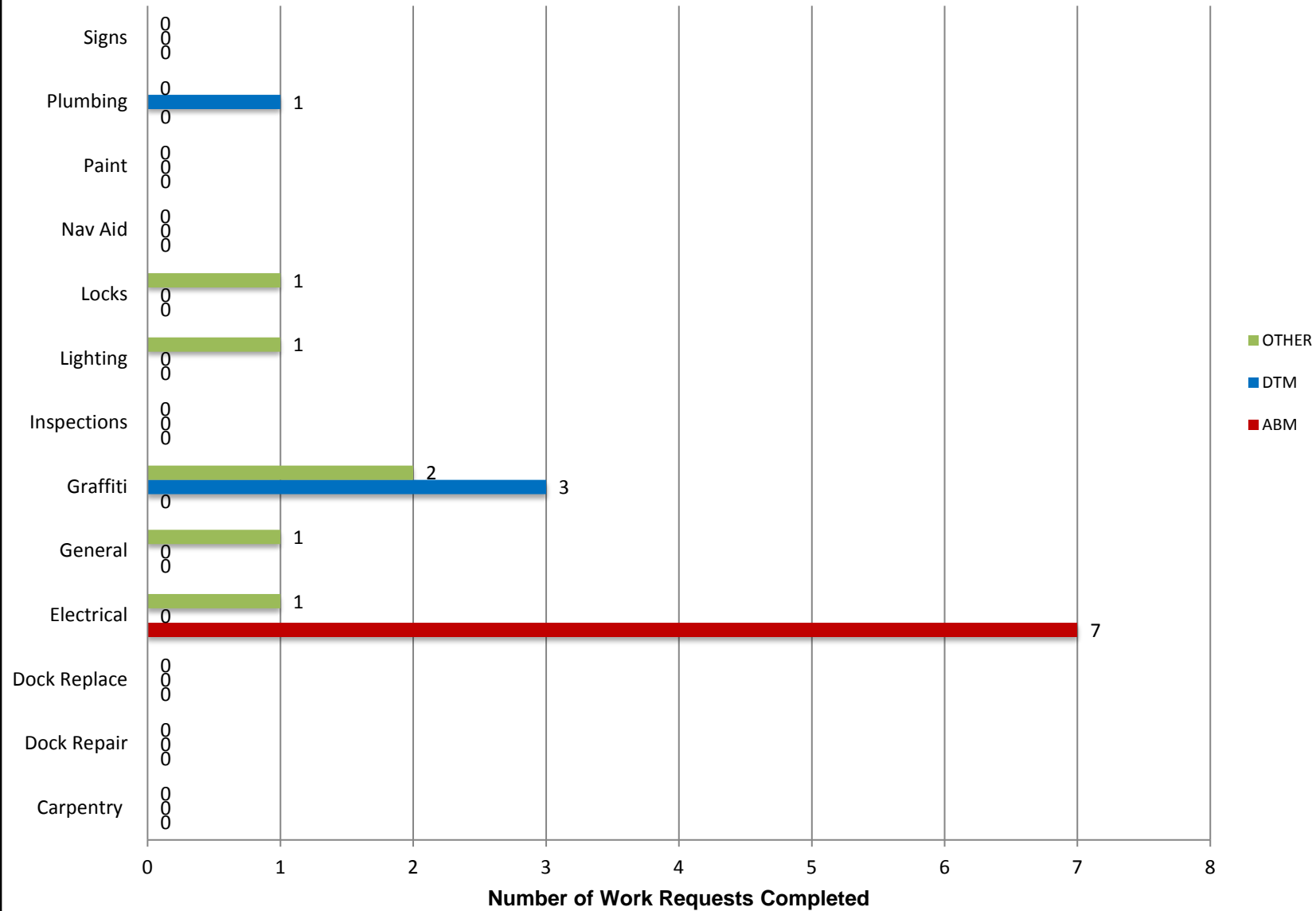
Marine Maintenance

Work Request Completed by Month



Marine Maintenance

Work Requests Completed by Location



PUMPOUT INSPECTION REPORT

Pump Out Location	Inspection Date			
	5/06/21	05/13/21	05/20/21	05/26/21
Gwy A, A	NW	W	W	W
Gwy A, B	W	NW	W	W
Parker's Public Dock, A	W	W	NW	W
Parker's Public Dock, B	W	W	W	W
Parker's Public Dock, C	W	W	W	W
Dock 9	W	W	W	W
Basin 6 South	W	W	W	W
Davie's Launch Ramp, A	W	W	W	NW
Station 31, A	W	W	W	W
Station 31, B	W	W	W	W
Station 21	W	W	W	W
Basin 1, Gwy 2	W	W	W	W
Basin 1, Gwy 4	W	W	W	W
Basin 2, Gwy 8	W	W	W	W
Basin 2, Gwy 11	W	W	W	W
Basin 3, Gwy 16	W	W	W	W
Basin 3, Gwy 19	NW	W	W	W
Basin 4, Gwy 28	W	W	W	W
Basin 4, Gwy 31	W	W	W	W
Basin 5, Gwy 33	W	N/A	W	W
Basin 5, Gwy 34	W	W	N/A	W

KEY
W = Working
NW = Not Working
N/A = Not Applicable

California, Los Angeles, Long Beach, Inner Harbor

June 2021

N 33° 46.3' / W 118° 12.6'

