

Long Beach  
Independent  
Redistricting  
Commission

Supplemental Data  
*March 17, 2021*



# Today's Presentation

## **Mindy Romero**

founder and director of the California Civic Engagement Project at the University of Southern California, and President of the Board of California Common Cause.

Dr. Romero's research in elections policy, demographics and civic engagement has made her one of the leading experts in the state. She is often called upon by the state legislature, California Secretary of State, academic institutions and the media to advise on issues of election administration and impacts on the state's most disenfranchised communities.



# Today's Presentation

## Demographics Report

Will provide analysis of multiple data sources which will be utilized during the redistricting process and provide a way for the commission to begin thinking about communities of interest.

Will include data tables and maps along with a narrative analysis.

## Final Report

Dr. Romero will assist the Commission with a report to the Mayor and City Council on the work of the commission and recommending any changes to the redistricting process in future years.



## Additional Data Sources

In addition to the required census data, we can expand to other data sources in order to illustrate known communities and where they geographically lie within the city. Some examples are:

- Voter file identified ethnic subgroups – surname matching and voter-provided birthplace information to identify ethnicities.
- LGBTQ characteristics from state data, LGBT Organizations and algorithms against voter registration data.
- Environmental data like noise and pollution mapping.
- Student data, including student housing and off-campus living.

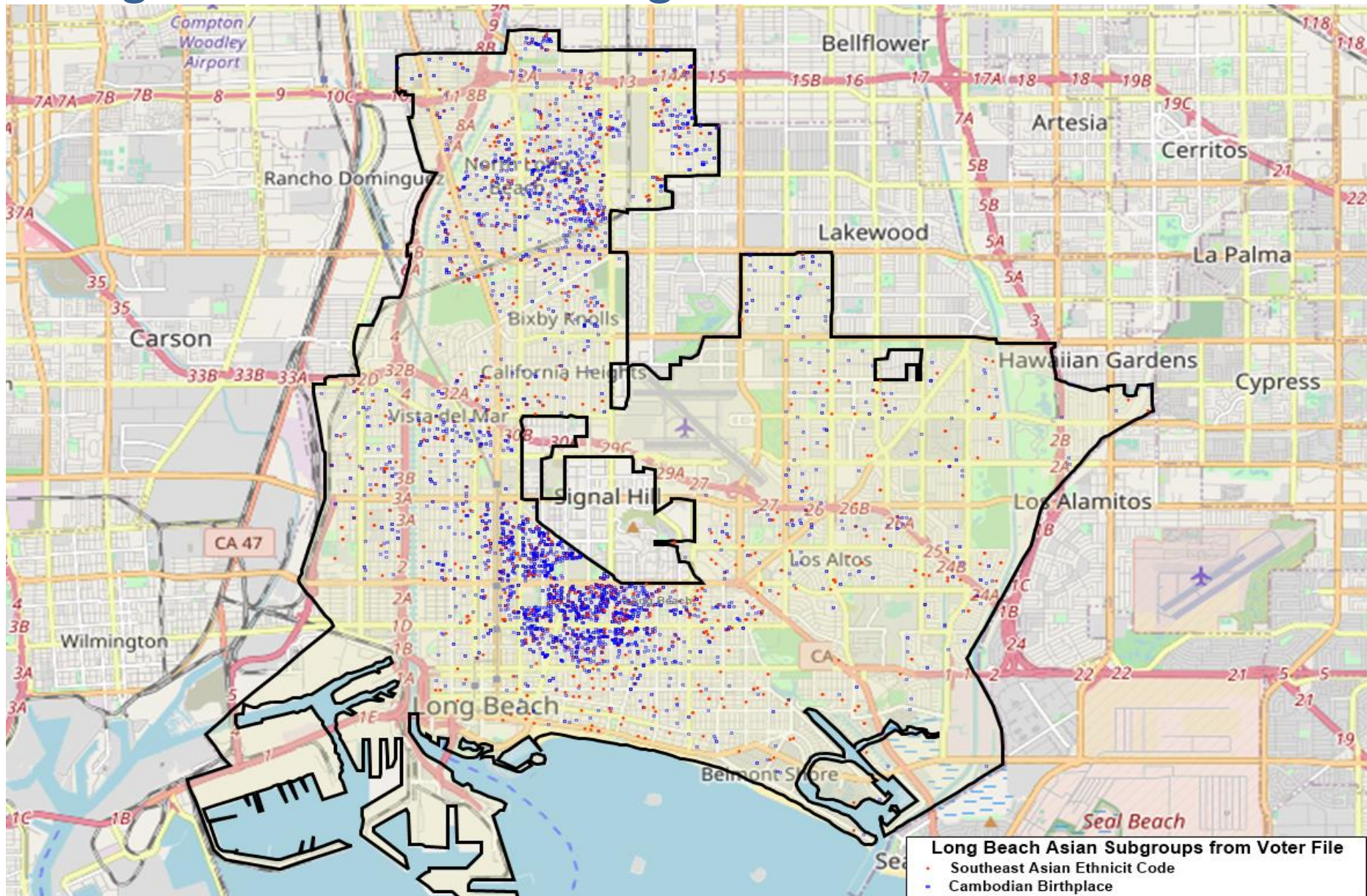
## Example: Long Beach Asian Subgroups

Census data is limited for Asian-American subgroups – we can identify the broad “Asian CVAP” for the purposes of the voting rights act, but looking deeper at subgroups by birthplace, nationality or language spoken can require additional data sources.

- Voter files include names of residents, which allows for surname matching.
- When registering to vote, Californians self-report birthplace information.
- Data on language ballots requested is maintained by the County and on the voter file.

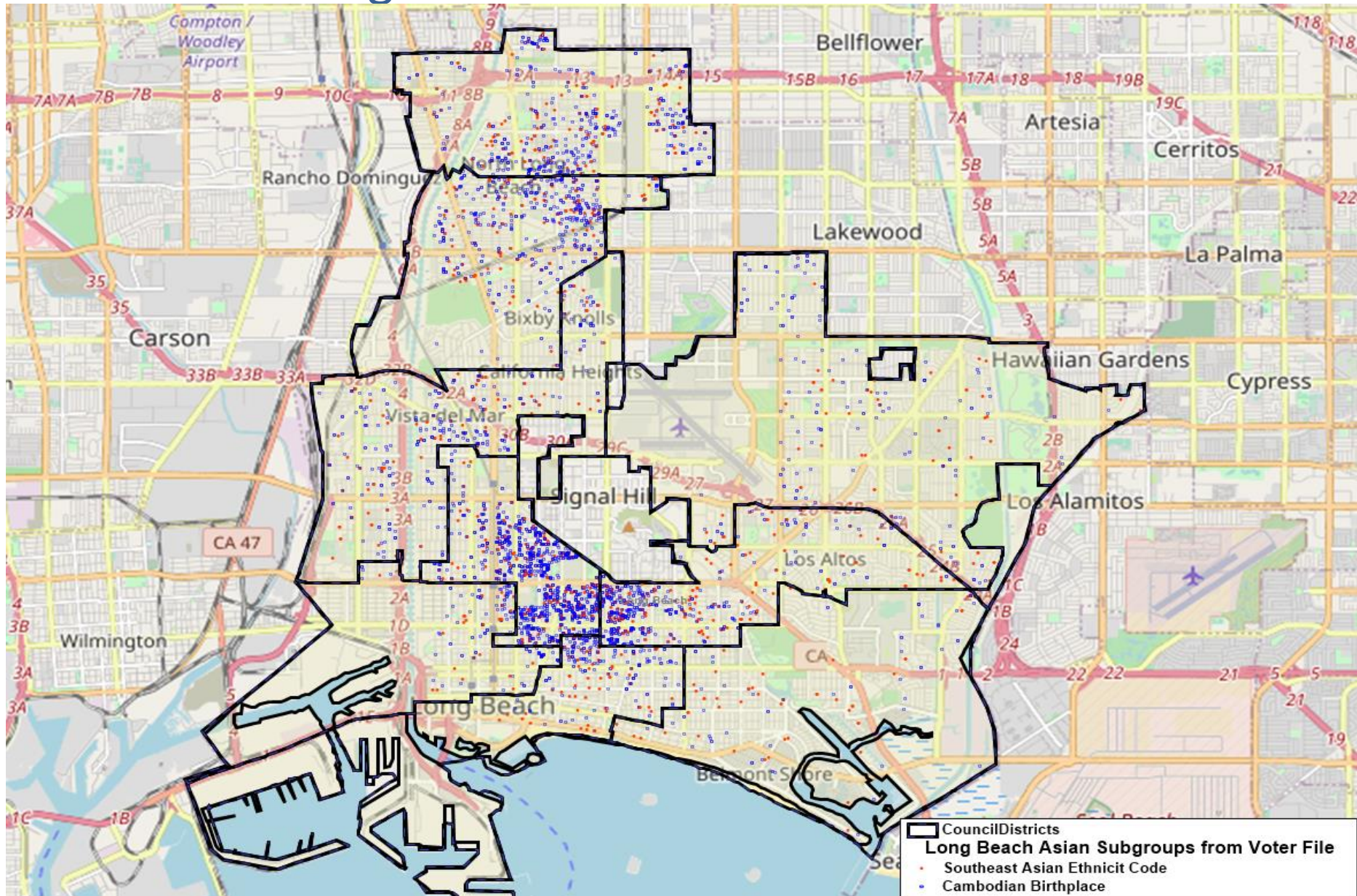


# Long Beach Cambodian Registered Voters



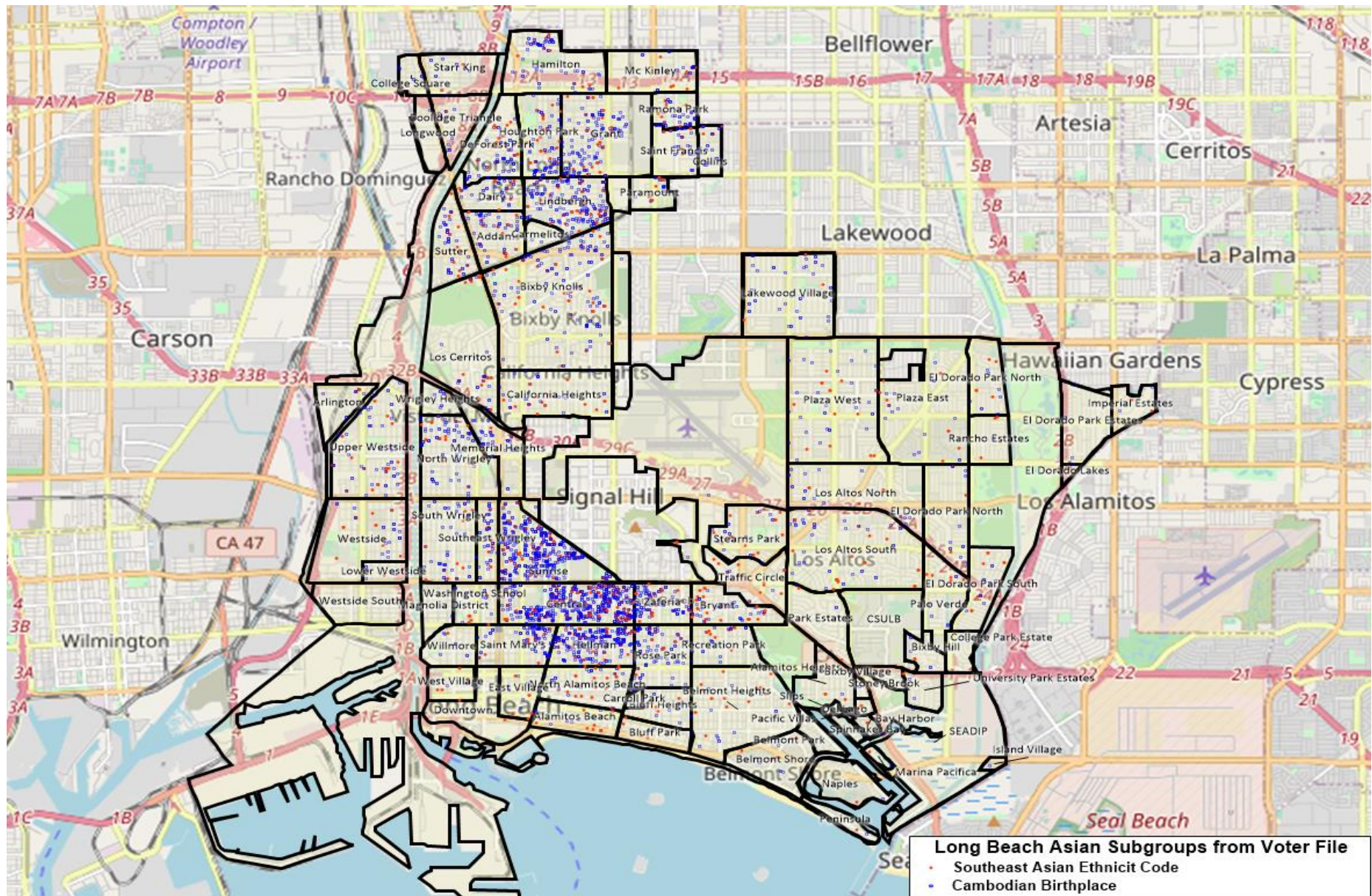


# Cambodian Registered Voters – Within Council Districts



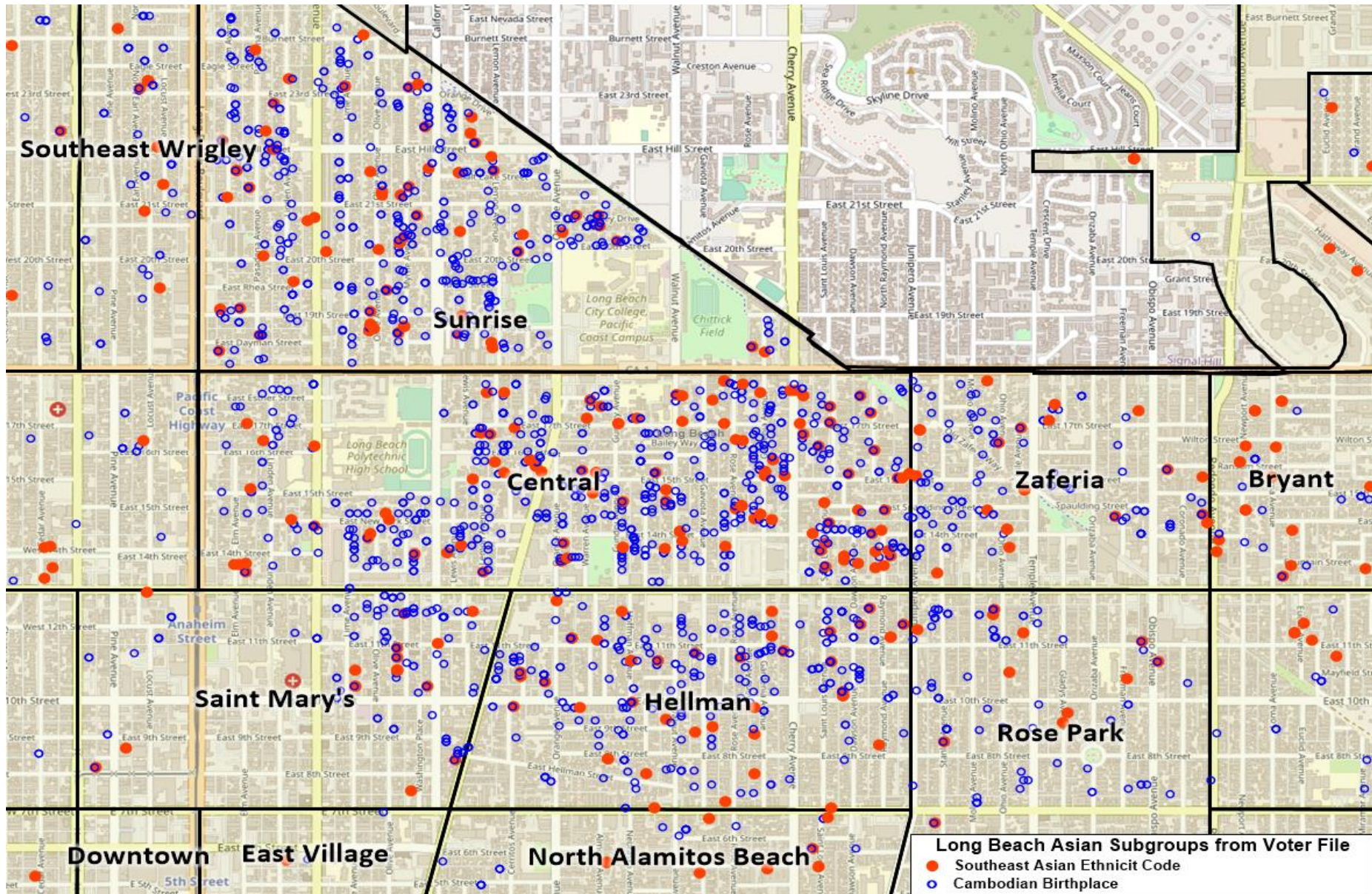


# Cambodian Registered Voters – Within Neighborhoods





# Cambodian Registered Voters – Key Neighborhoods



## Example: LGBTQ+ Population

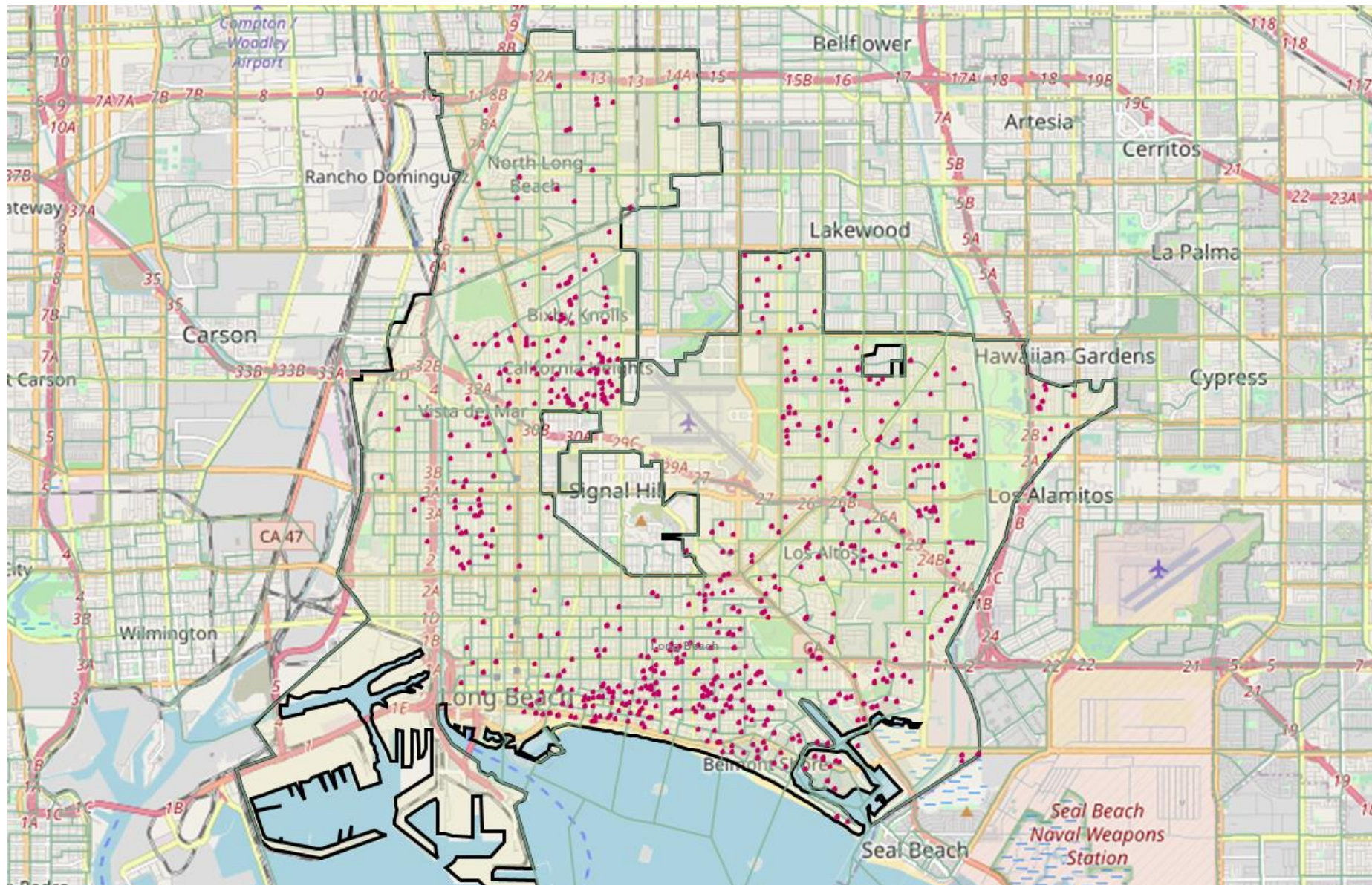
Voter File Matched data provides some LGBTQ characteristics. There are three datapoints in the file...

1. Domestic Partners (the registry is only available for over 65 or Same Sex, all under 65 on the registry)
2. POSSLQ - algorithm for identifying same-sex households used by the Census in the 1970s to find cohabitating couples.
3. Data on political donations and membership in LGBTQ organizations

We can look at this kind of data combined with Census Tract data on same-sex households and Community of Interest testimony

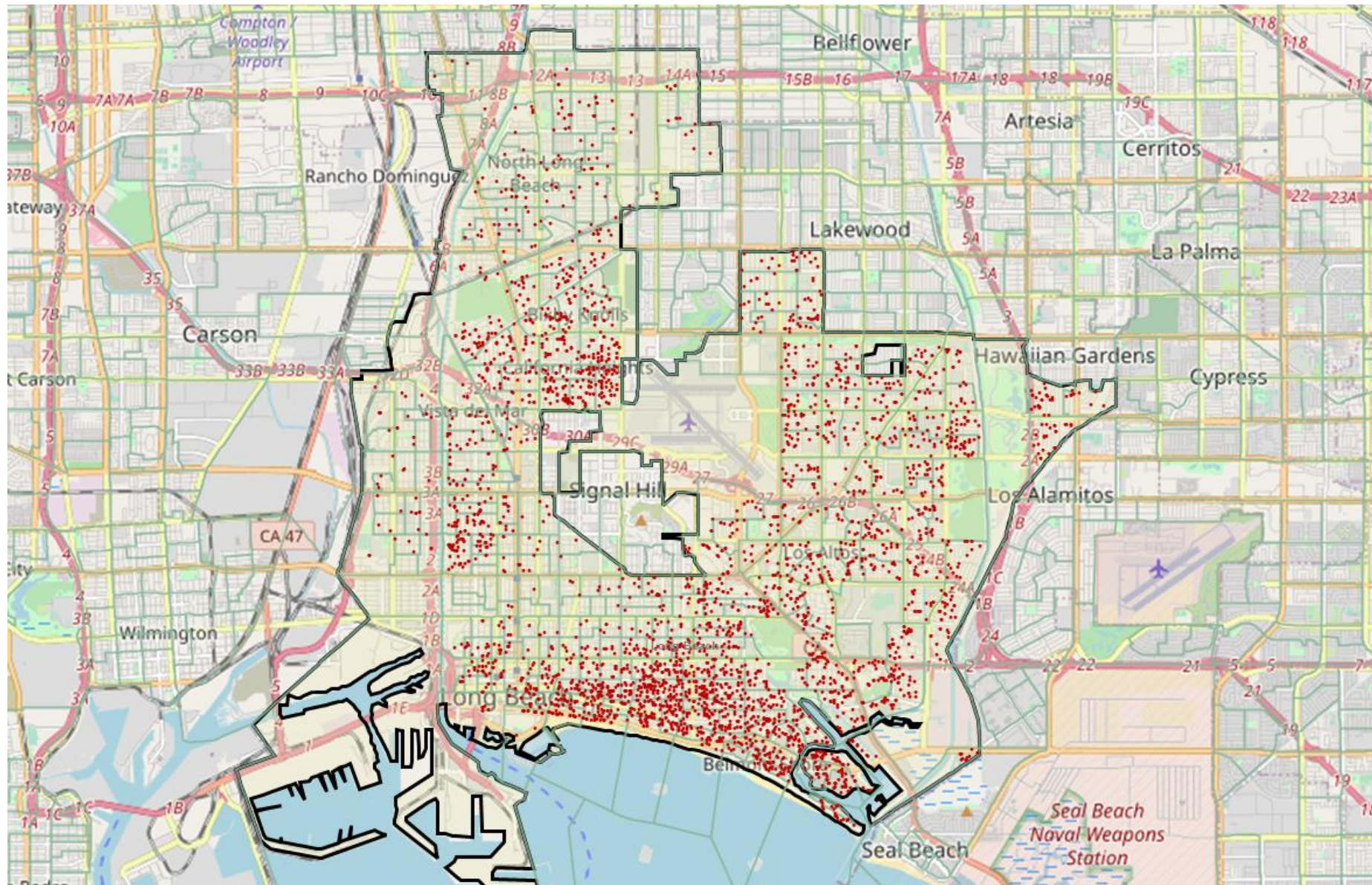


## LGBTQ Domestic Partners



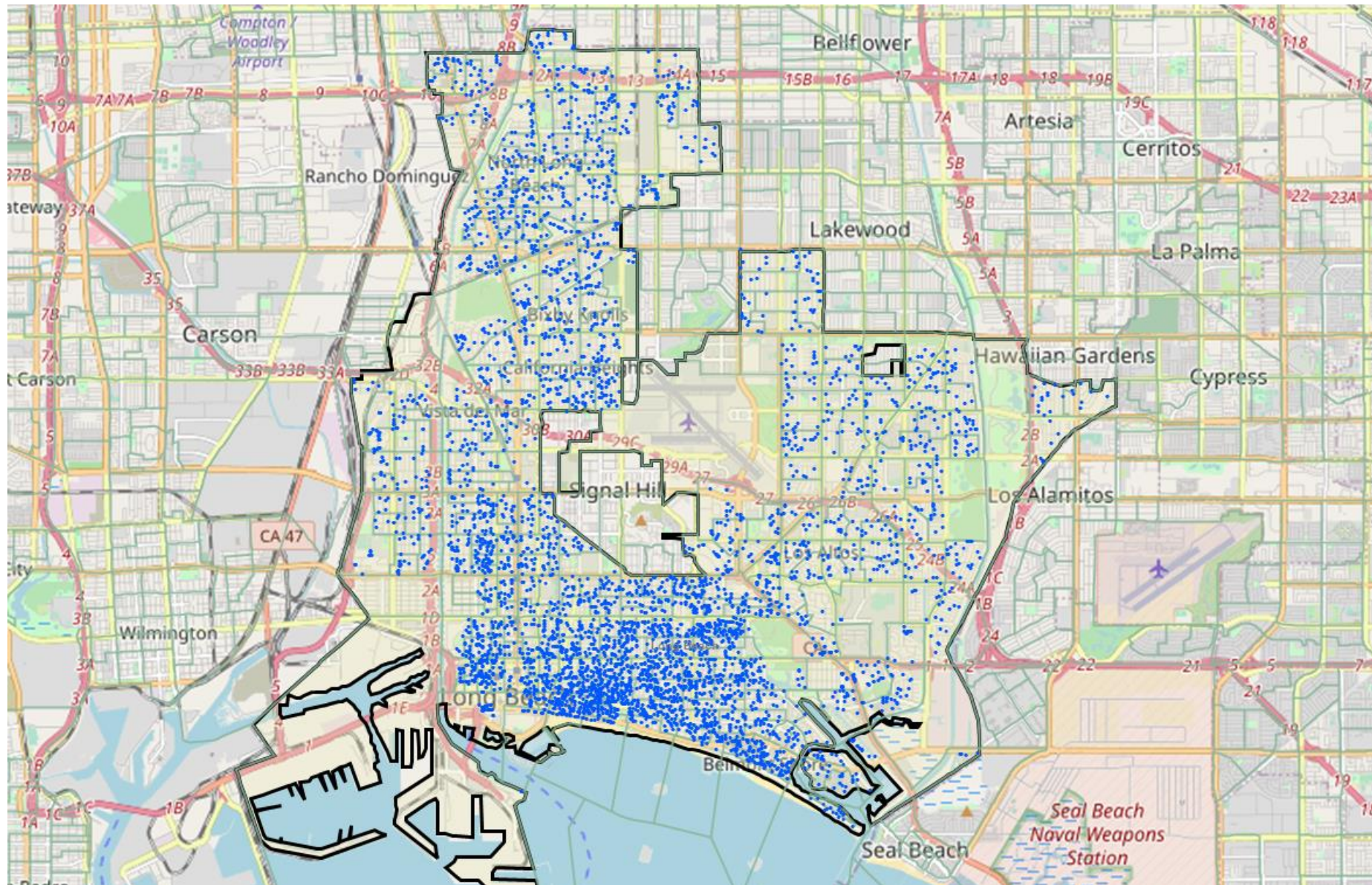


## LGBTQ Donors / Organizational Membership





## LGBTQ - POSSLQ Algorithm



## Example: Environmental Pollution

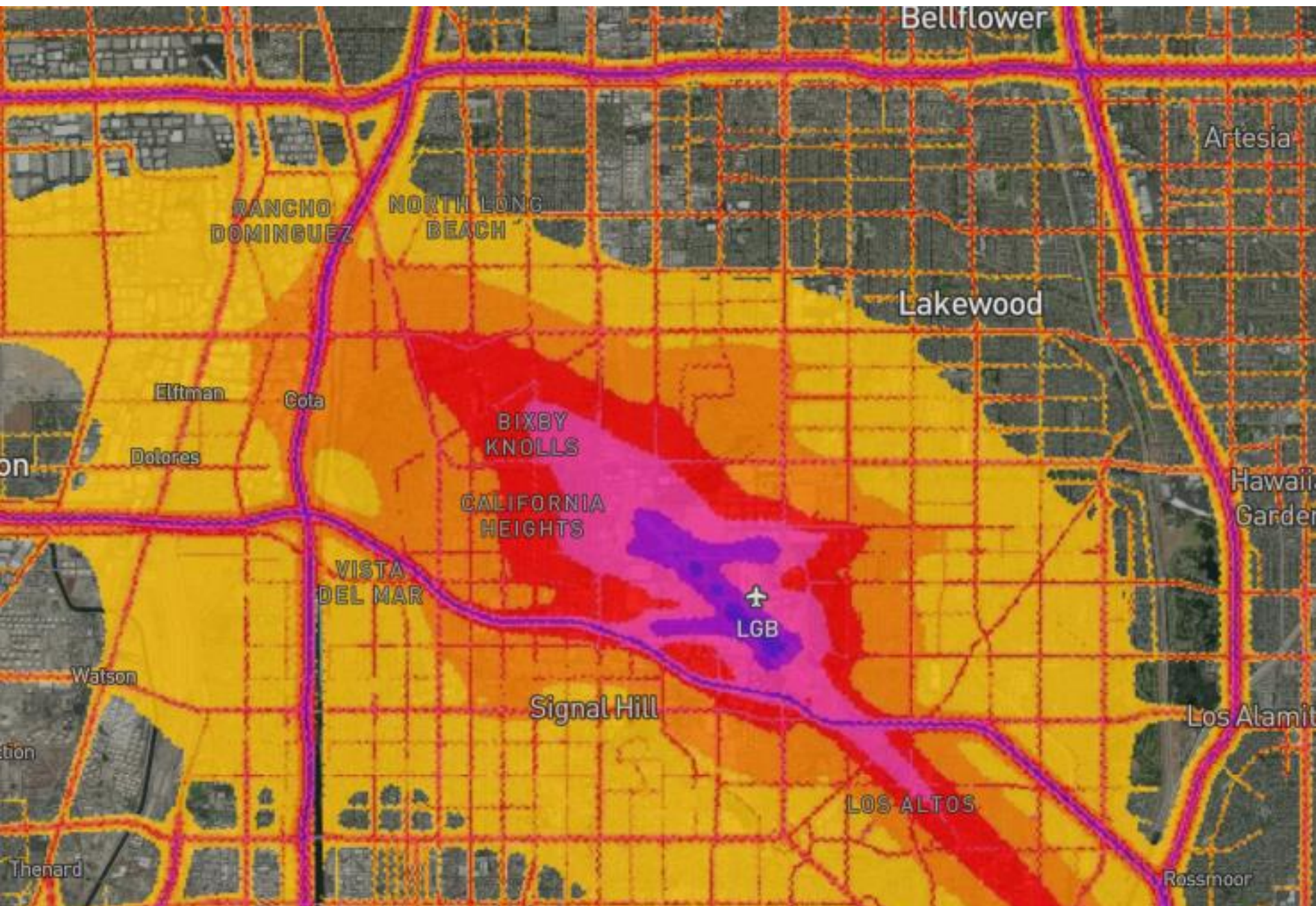
There are a number of potential environmental concerns that could become important in the understanding of communities of interest, and how they relate to city policymaking.

- **Airport Noise** – Long Beach Airport staff monitor aircraft noise levels and regulate activities such as engine maintenance run-ups, training operations, and noise level violations. The City may request certain noise abatement flight paths to reduce local impacts.









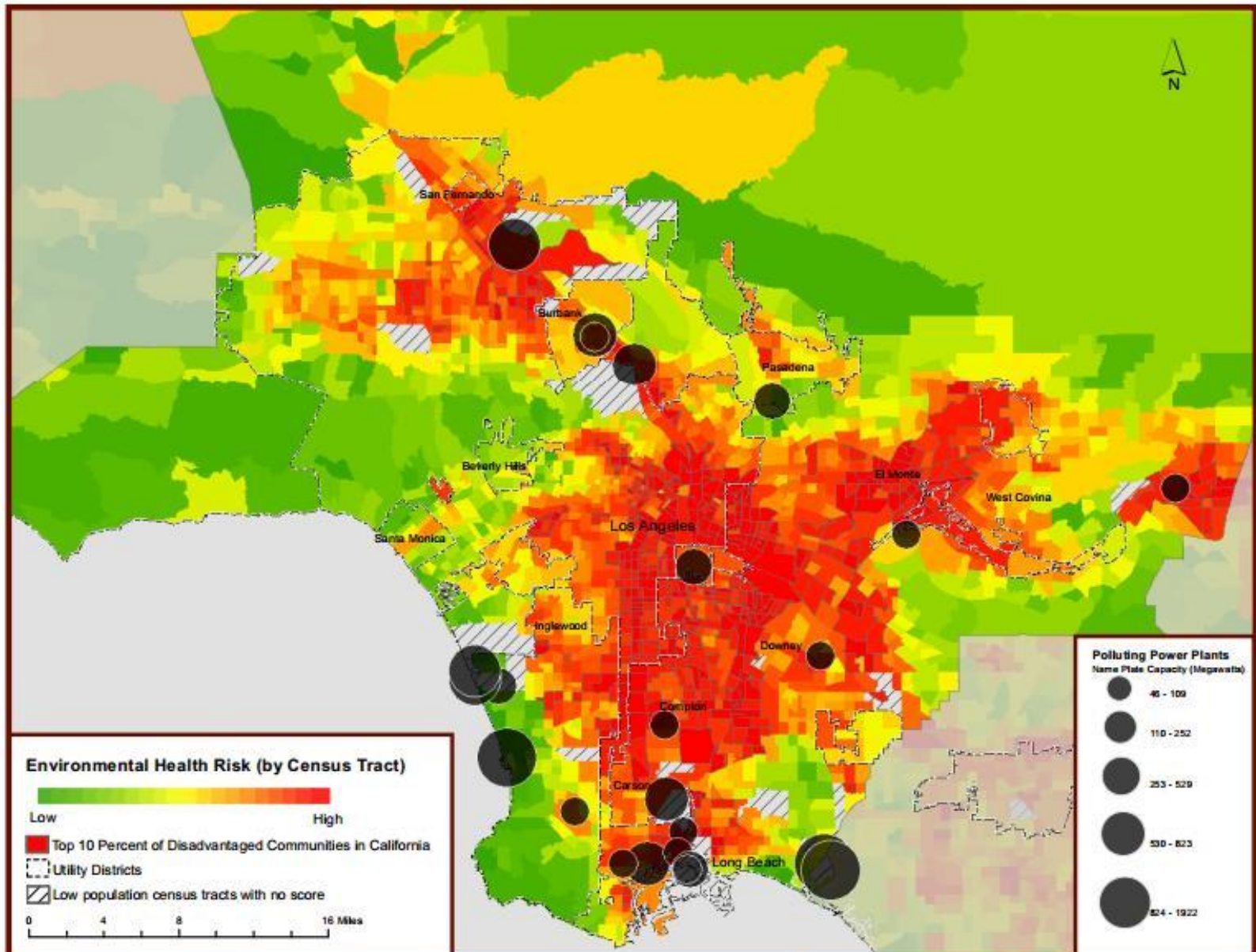


## Example: Environmental Pollution

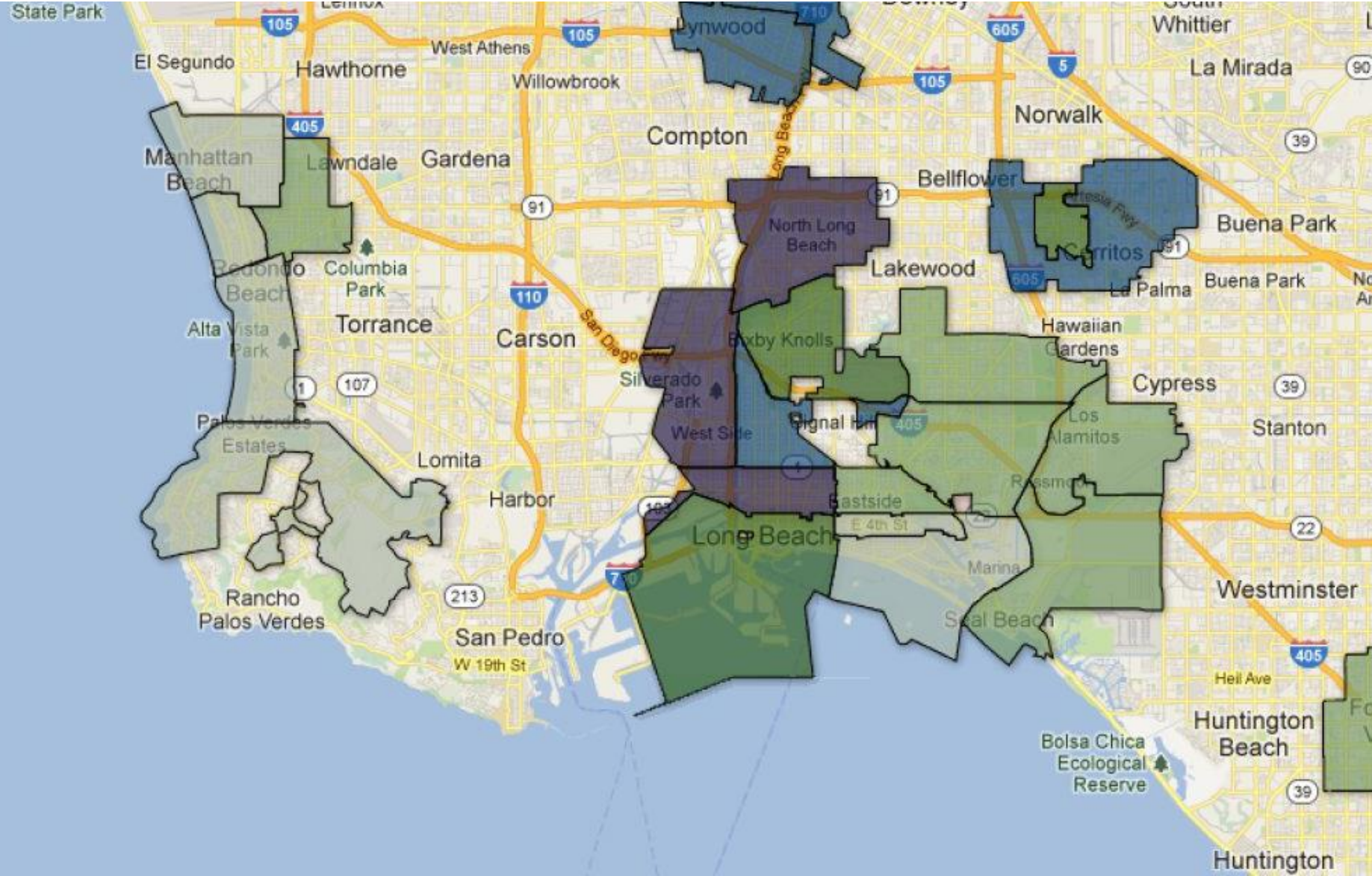
There are a number of potential environmental concerns that could become important in the understanding of communities of interest, and how they relate to city policymaking.

- **Air Quality** – According to the American Lung Association, Long Beach has significant pollution issues.
  - Ranked #1 for high ozone days out of 229 areas
  - Ranked #6 for 24-hour particle pollution out of 216 areas
  - Ranked #4 for annual particle pollution out of 204 areas

# Pollution from power plants





[illegible]

## Example: Student Population

Student population exists primarily around the CSU Long Beach Campus

- Students in on-campus housing are included in the “Group Quarters” counts by the census. These can be geocoded in the mapping software
- Students in off-campus housing can be identified a number of ways:
  - Age/Renter mapping to identify densities of these potential student populations
  - Other data sources from the campuses or student transportation data or city of Long Beach sources.





**REDISTRICTING  
PARTNERS**