

# MAC Report

## December 2020



SUBMITTED BY THE MARINE BUREAU



## TABLE OF CONTENTS

1. Marinas and Waterways
2. Beaches and Waterways
3. Marine Maintenance Work Order Graphs
4. Pump Out Inspection Report
5. Tide Table



## **MARINAS AND WATERWAYS**

### **Accomplishments**

- ❖ Staff replaced all photo cells on bike path at Shoreline Marina Gangway's Q thru GG
- ❖ Staff made multiple repairs to the top cap of the Junipero stub wall that separates the sand from the sidewalk
- ❖ Staff repaired seawall on 61<sup>st</sup>.

### **Projects in the works**

- ❖ Staff is in the process of replacing all the damaged and missing signs throughout the Long Beach Shoreline Marina. Staff has already replaced all the "Gangway" and "No Visitor" signs. 90% completed.
- ❖ Staff is in the process of retrofitting the existing twelve (12) booster pumps from a wet system to a dry fire suppression system in the Long Beach Shoreline Marina. 50% completed.
- ❖ Staff is in the process of making improvements to the Alamitos Bay Marina office including: painting the interior of the building. 50% completed.
- ❖ Staff is in the process of inspecting and tightening all the loose fingers throughout the Long Beach Shoreline Marina. 40% completed.
- ❖ Staff is in the process of inspecting and replacing all the damaged gangway water supply lines throughout Long Beach Shoreline Marina, as needed. 45% completed



## **MARINAS AND WATERWAYS**

- ❖ Staff is in the process of repairing the restroom plumbing throughout Long Beach Shoreline Marina. 35% completed.
- ❖ Staff is in the process of repairing concrete fingers throughout Long Beach Shoreline Marina. 10% complete.
- ❖ Staff is in the process of repairing all damaged concrete behind Spinnaker Bay near the seawall. 10% complete.
- ❖ Staff is in the process of replacing all electrical components (breakers, receptacles, etc.) inside the pedestals located throughout Shoreline & Rainbow Harbor Marina's. 20% complete.
- ❖ Staff is in the process of striping the boatowner's parking area throughout Basins 1-3. It is 90% complete.
- ❖ Staff is in the process of replacing exterior doors at the Belmont Pool office. 50% completed.
- ❖ Staff is in the process of installing two (2) new power pedestals on long dock North. 50% completed.
- ❖ Staff is in the process of doing all bright work in Basin's 1, 2 & 3 90% complete.
- ❖ Staff is in the process of changing all roller bearings for DTM's gangways. 25% completed.
- ❖ Staff is in the process of building a new lifeguard shed. 20% completed.
- ❖ Staff is in the process of replacing doors at Pier Point Restrooms. 50% completed





## **BEACHES AND WATERWAYS**

### **Accomplishments**

- ❖ Beach Maintenance staff removed over 75 tons of trash and debris from the beaches and inner bays.
- ❖ Beach Maintenance staff serviced 200 trash receptacles during the month of December.
- ❖ Beach Maintenance staff built up and maintained the berm on the East Peninsula beach between 62<sup>nd</sup> – 72<sup>nd</sup> place and along the bayside.
- ❖ Beach Maintenance staff swept the bike/pedestrian path.
- ❖ Beach Maintenance staff conducted weekly cleanups of several homeless encampments throughout the beach areas.
- ❖ Beach Maintenance staff raked and cleaned throughout the beach areas.
- ❖ Beach Maintenance staff installed new sod and irrigation at Treasure Island Park.
- ❖ Beach Maintenance staff upgraded irrigation clocks from 3G to 4G.
- ❖ Beach Maintenance staff repaired mainline in Basin 2 (Yacht Club).
- ❖ Queensway Bay staff conducted a cleaning of all 60 basket filters in the Rainbow Lagoon; six days per week, twice per day. Staff replaces and cleans all 60 baskets once a month.
- ❖ Queensway Bay staff conducted daily removal of water borne debris and algae in the Rainbow Lagoon, Rainbow Harbor Marina and Long Beach Shoreline Marina using hand nets and a small skimmer boat.
- ❖ Queensway Bay staff worked with Los Cerritos Wetlands Stewardship to replace the aerator for the Rainbow Lagoon.
- ❖ Queensway Bay staff removed trash from docks, three times per week.
- ❖ Queensway Bay staff conducted daily cleaning and maintenance of all trash skimmers on the docks, seven days per week.
- ❖ Queensway Bay staff conducted monthly inspections on all docks throughout Rainbow Harbor Marina.



## **BEACHES AND WATERWAYS**

- ❖ Queensway Bay staff serviced all sewage pumps on the commercial docks.
- ❖ Queensway Bay staff conducted weekly encampment posting and cleanups.
- ❖ Queensway Bay staff cleaned and sanitized the public elevator near the bird cage.
- ❖ Queensway Bay staff completed 72 work order request and 12 Go Long Beach request for the month of December.
- ❖ Queensway Bay staff worked with Lifeguards to operate the debris boom on a 24-hour schedule during the rain storm.
- ❖ Queensway Bay staff placed a new marathon bench at Shoreline Aquatic Park.
- ❖ Queensway Bay staff assembled furniture for the conference room at Rainbow Harbor office.
- ❖ Queensway Bay staff installed two red navigation lights on the Queensway Bay bridge.
- ❖ Queensway Bay staff worked with SoCal Sewer to clean out the clarifier/interceptor and replace man holes at the South Shore Launch Ramp.
- ❖ Queensway Bay staff worked with Beach Maintenance staff to remove approximately 100 tons of debris from the capture site.
- ❖ Queensway Bay staff conducted daily graffiti removal of the entire Rainbow Harbor area, including the Queensway bridge bike path and the Pier Point parking lot.
- ❖ Queensway Bay staff performed routine maintenance on the Wave and Dolphin Fountain.
- ❖ Queensway Bay staff conducted routine maintenance on the Wave Fountain filter pumps.
- ❖ Queensway Bay staff power washed the exterior of the Wave Fountain bi-weekly.
- ❖ Queensway Bay staff coordinated the installation of four (4) new pneumatic valves.



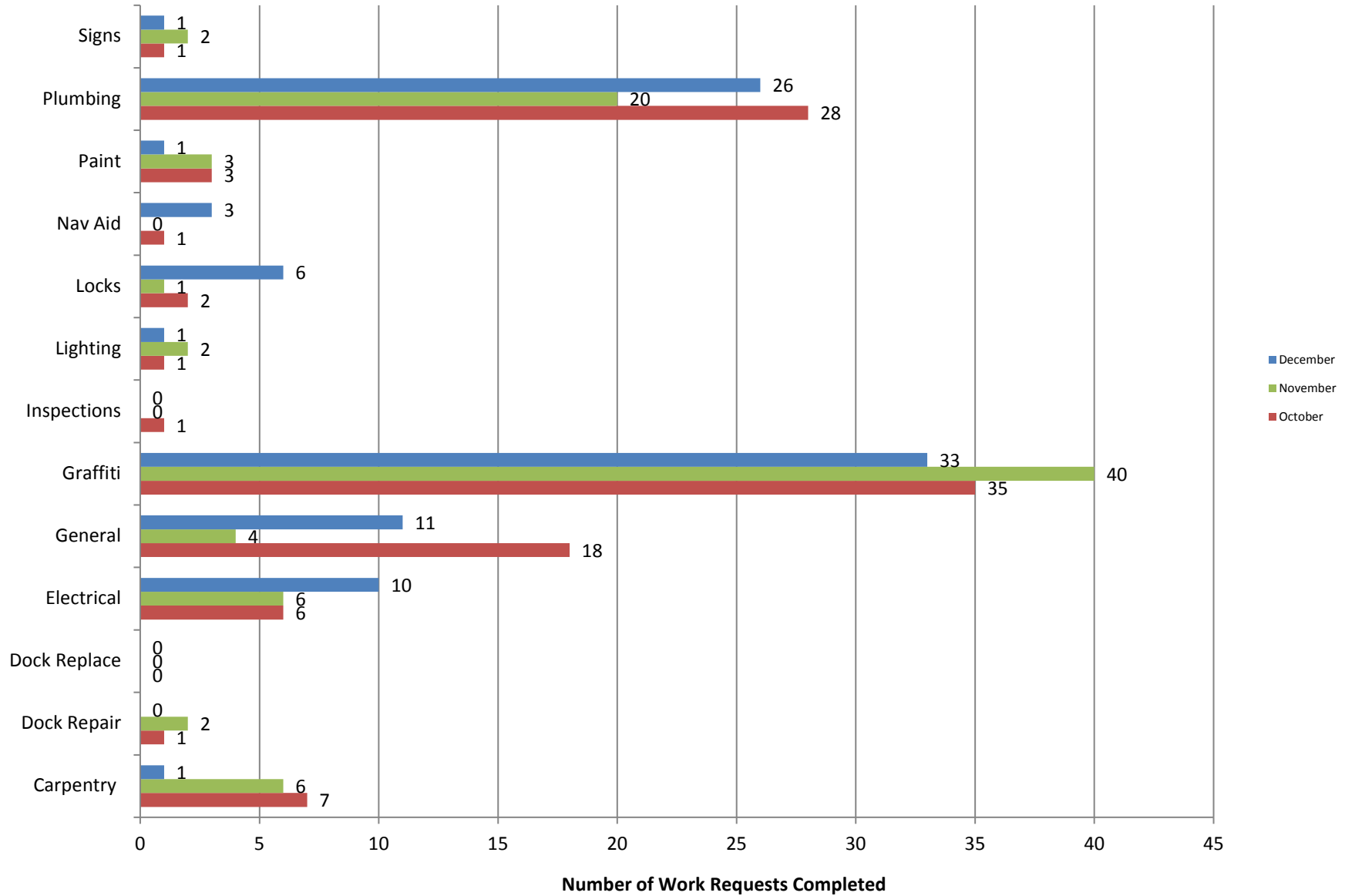
## **BEACHES AND WATERWAYS**

### **Projects in the works**

- ❖ Beach Maintenance staff is continuing the process of rebuilding sections of the peninsula where erosion occurs.

# Marine Maintenance

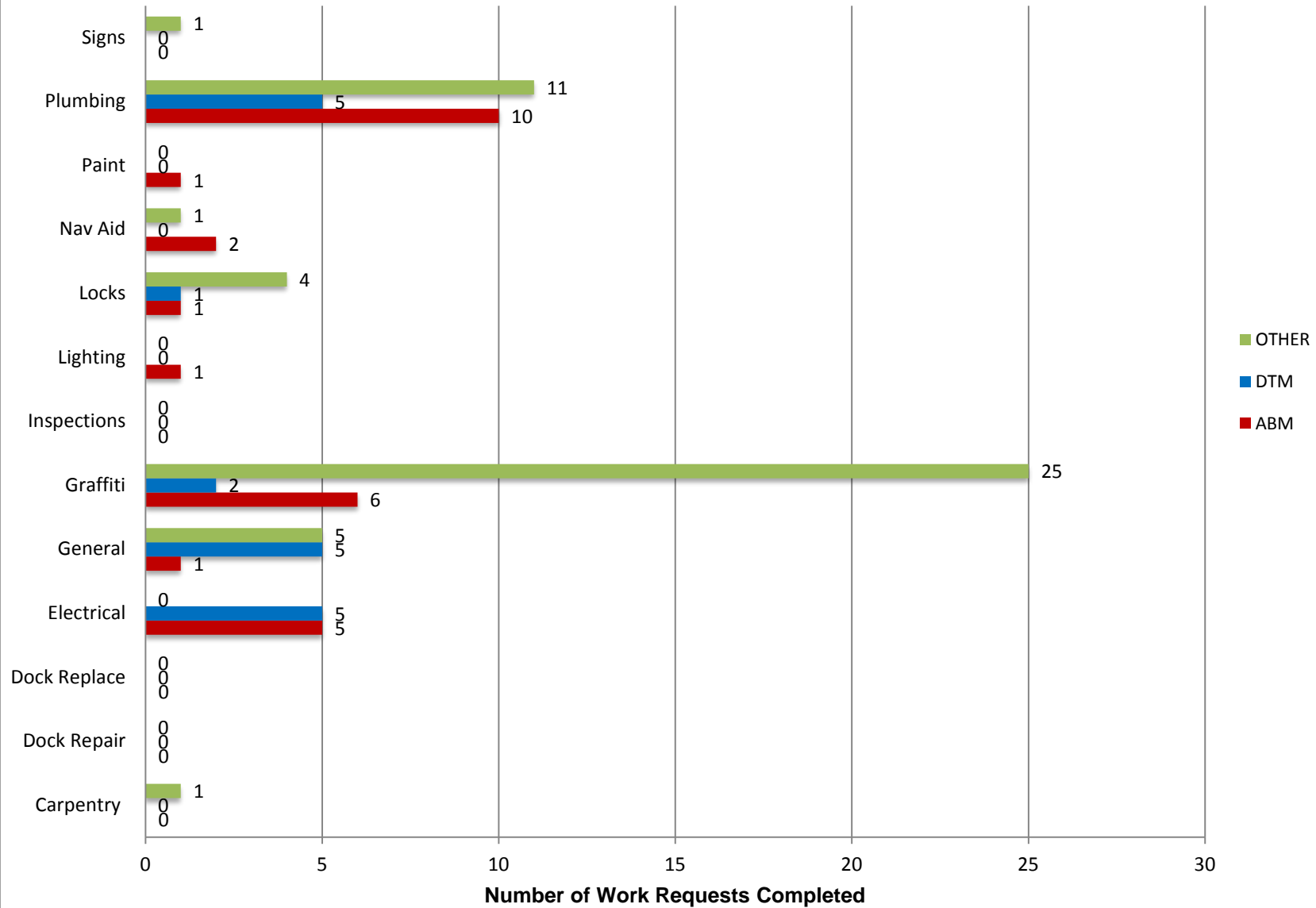
## Work Request Completed by Month





# Marine Maintenance

## Work Requests Completed by Location



## PUMPOUT INSPECTION REPORT

Pump Out Location	Inspection Date			
	12/04/20	12/10/20	12/17/20	12/31/20
Gwy A, A	W	W	W	W
Gwy A, B	W	W	W	W
Parker's Public Dock, A	W	W	NW	W
Parker's Public Dock, B	W	W	W	W
Parker's Public Dock, C	W	W	W	W
Dock 9	W	NW	NW	W
Basin 6 South	W	W	W	W
Davie's Launch Ramp, A	W	W	W	W
Station 31, A	W	W	W	W
Station 31, B	W	W	W	W
Station 21	W	W	W	W
Basin 1, Gwy 2	W	W	W	W
Basin 1, Gwy 4	W	W	W	W
Basin 2, Gwy 8	W	W	W	W
Basin 2, Gwy 11	W	W	W	W
Basin 3, Gwy 16	W	W	W	W
Basin 3, Gwy 19	W	W	W	W
Basin 4, Gwy 28	W	W	W	W
Basin 4, Gwy 31	W	W	W	W
Basin 5, Gwy 33	W	W	W	W
Basin 5, Gwy 34	N/A	W	W	N/A

KEY
W = Working
NW = Not Working
N/A = Not Applicable

# California, Los Angeles, Long Beach, Inner Harbor

January 2021

N 33° 46.3' / W 118° 12.6'

