

## Airport Advisory Commission

**Alvaro Castillo**  
Chair

**Wayne Chaney Sr.**  
Vice Chair

**Jeffrey Anderson**

**Robert L. Duarte Jr.**

**Katie Larson**

**Rita Nayak**

**Miles Nevin**

**Geetanjali Reuben**



## Airport Management

**Cynthia Guidry**  
Director

**Juan López-Rios**  
Deputy Airport Director

**Ken Mason**  
Executive Assistant

**Claudia Lewis**  
Manager of Administration  
& Finance

**Ron Reeves**  
Airport Operations & Facilities  
Manager

**Ambi Thurai**  
Engineering Officer

**Dale Worsham**  
Administrative Officer

**Karl Zittel**  
Airside Operations Officer

**Matthew Brookes**  
Airport Properties Officer

**Scott Garrett**  
Facilities Management Officer

**Mony Chhey**  
Financial Services Officer

**Scott Korobkin**  
Superintendent of Safety and  
Security

**Kate Kuykendall**  
Public Affairs Officer

**Ryan McMullan**  
Noise & Environmental Affairs  
Officer



# Long Beach Airport Monthly Noise Report September 2020

**COMMERCIAL AIRCRAFT LATE NIGHT ACTIVITY**  
**LGB Current Month & Calendar Year-To-Date Statistics (10 PM- 7AM)**  
**September 2020**

September				Calendar Year-To-Date		
10PM - 11PM Activity	2020	2019	Change	2020	2019	Change
<b>Air Carrier &amp; Commuter Operations</b>	<b>1,103</b>	<b>2,834</b>	<b>-61.1%</b>	<b>13,472</b>	<b>24,564</b>	<b>-45.2%</b>
American/Mesa/SkyWest Airlines	0	1	-100.0%	0	14	-100.0%
Delta/SkyWest/Compass Airlines	0	2	-100.0%	8	23	-65.2%
FedEx	0	0		0	0	
Hawaiian Airlines	0	0		1	3	-66.7%
JetBlue Airways	0	11	-100.0%	22	92	-76.1%
Southwest Airlines	0	1	-100.0%	0	8	-100.0%
UPS	0	0		0	0	
<b>Subtotal 10PM-11PM</b>	<b>0</b>	<b>15</b>	<b>-100.0%</b>	<b>31</b>	<b>140</b>	<b>-77.9%</b>
11PM- 7AM Activity	2020	2019	Change	2020	2019	Change
American/Mesa/SkyWest Airlines	0	0		0	10	-100.0%
Delta/SkyWest/Compass Airlines	0	0		0	4	-100.0%
FedEx	0	0		0	0	
Hawaiian Airlines	0	0		2	2	0.0%
JetBlue Airways	0	4	-100.0%	18	60	-70.0%
Southwest Airlines	0	0		0	0	
UPS	0	0		0	3	-100.0%
<b>Subtotal 11PM-7AM</b>	<b>0</b>	<b>4</b>	<b>-100.0%</b>	<b>20</b>	<b>79</b>	<b>-74.7%</b>
<b>TOTAL</b>	<b>0</b>	<b>19</b>	<b>-100.0%</b>	<b>51</b>	<b>219</b>	<b>-76.7%</b>

Notes:

0.0% (0 of 1,103) of total commercial operations occurred between 10pm - 7am.

0.0 flights - Nightly average for all late night (10:00 PM—7:00 AM) commercial flights, includes unanticipated delays.

0.0 flights - Nightly average for commercial flights after 11 PM.

<b>AIRPORT NOISE VIOLATIONS</b> <b>LGB Current Month &amp; Calendar Year-To-Date Statistics</b> <b>September 2020</b>						
September				Calendar Year-To-Date		
Air Carrier Noise Violations	2020	2019	Change	2020	2019	Change
American/Mesa Airlines	0	0		0	12	-100.0%
Delta/SkyWest/Compass	0	0		1	4	-75.0%
FedEx	0	0		0	0	
Hawaiian Airlines	0	0		2	2	0.0%
JetBlue Airways	0	4	-100.0%	16	63	-74.6%
Southwest Airlines	0	0		0	1	-100.0%
UPS	0	0		0	1	-100.0%
<b>Subtotal</b>	<b>0</b>	<b>4</b>	<b>-100.0%</b>	<b>19</b>	<b>83</b>	<b>-77.1%</b>
Commuter Noise Violations	2020	2019	Change	2020	2019	Change
American/SkyWest Airlines	0	0		0	0	
Delta/SkyWest/Compass	0	0		0	0	
<b>Subtotal</b>	<b>0</b>	<b>0</b>		<b>0</b>	<b>0</b>	
Non-Commercial Noise Violations	2020	2019	Change	2020	2019	Change
All GA, Charter & Other	11	12	-8.3%	81	119	-31.9%
<b>TOTAL</b>	<b>11</b>	<b>16</b>	<b>-31.3%</b>	<b>100</b>	<b>202</b>	<b>-50.5%</b>
Monetary Fines	2020	2019		2020	2019	
Airport Surcharges	\$100	\$1,500		\$7,700	\$29,600	
Consent Decree	\$0	\$24,000		\$78,000	\$342,000	
<b>TOTAL</b>	<b>\$100</b>	<b>\$25,500</b>		<b>\$85,700</b>	<b>\$371,600</b>	

<b>AIRPORT OPERATIONS</b> <b>LGB Current Month &amp; Calendar Year-To-Date Statistics</b> <b>September 2020</b>						
September				Calendar Year-To-Date		
Airport Operations (FAA)	2020	2019	Change	2020	2019	Change
Air Carrier + Commuter Carriers	1,103	2,834	-61.1%	13,472	24,564	-45.2%
Air Taxi + General Aviation	25,394	23,831	6.6%	199,029	215,449	-7.6%
Military Operations	89	80	11.3%	961	924	4.0%
<b>Total Aircraft Operations</b>	<b>26,586</b>	<b>26,745</b>	<b>-0.6%</b>	<b>213,462</b>	<b>240,937</b>	<b>-11.4%</b>

Notes:

0.04% (11 of 26,497) of the Airport's total aircraft operations (Commercial & GA) resulted in an aircraft noise violation.  
0.0% (0 of 1,103) of the Airport's Commercial operations (Commercial & Commuter) resulted in an aircraft noise violation.

<div>AIRCRAFT NOISE VIOLATORS</div> <div>September 2020</div>										
OWNERNAME	DATE	TIME	A/D	RWY	FLIGHT #	A/C TYPE	ORIG/DEST	SEL	LIMIT	STATUS
Qatar Airways	9/1/2020	0:19:02	A	30		GLF6		86.9	79.0	VIO
Volerjet Business Corp.	9/2/2020	22:25:12	D	30		LJ55		93.4	90.0	VIO
C2 Aviation LLC	9/5/2020	2:26:27	A	30		GLF4		91.2	79.0	VIO
Private	9/5/2020	10:13:58	D	26R		C210		94.2	92.0	VIO
Private	9/7/2020	15:52:15	T	26L		P28A		N/A	N/A	VIO
Sierra Systems	9/8/2020	20:54:04	A	26R		C337		92.0	88.0	VIO
Private	9/11/2020	20:48:00	T	26R		C172		N/A	N/A	VIO
Private	9/17/2020	21:07:30	M	30		C172		N/A	N/A	VIO
Private	9/18/2020	15:03:00	D	26R		C172		95.2	92.0	VIO
Universal Flight Operation Inc.	9/19/2020	17:50:26	M	30		C152		N/A	N/A	VIO
Priority Air Charter LLC	9/30/2020	23:19:41	A	30		PC12		90.9	79.0	VIO

**DEFINITIONS:**

- A/C Type** — Aircraft Type

**A** — Arrival

**ALT ENF** — Alternative Enforcement

**D** — Departure

**M** — Missed Approach
- RWY** — Runway

**SEL** — SENEL — Single Event Noise Exposure Level (dBA)

**VIO**—Violation

**T**—Touch and Go

**VIO**—Violation

<b>AIR CARRIER NOISE BUDGET PERFORMANCE</b> <b>October 2019 - September 2020</b>			
<b>RMT #</b>	<b>NOISE BUDGET</b>	<b>ACTUAL</b>	<b>PERCENT BUDGET USED</b>
9	70.7	26.8	37.9%
10	84.6	38.9	46.0%

Source: Long Beach Airport Staff Calculations

**DEFINITIONS:**

**RMT** — Remote Monitoring Terminal

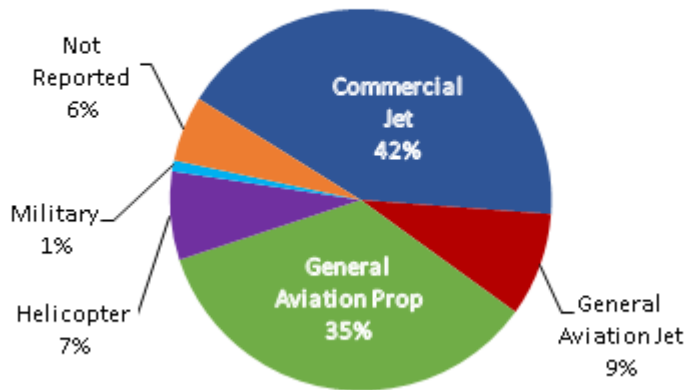
<b>TOTAL NOISE BUDGET PERFORMANCE</b> <b>October 2019 - September 2020</b>			
<b>RMT #</b>	<b>NOISE BUDGET</b>	<b>ACTUAL</b>	<b>PERCENT BUDGET USED</b>
9	102.7	33.7	32.8%
10	120.9	48.5	40.1%

Source: Long Beach Airport Staff Calculations

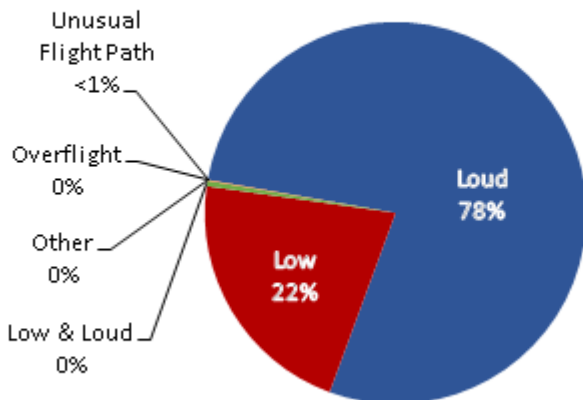
# LGB AIRCRAFT NOISE COMPLAINTS

September 2020

## Complaints by Aircraft Types



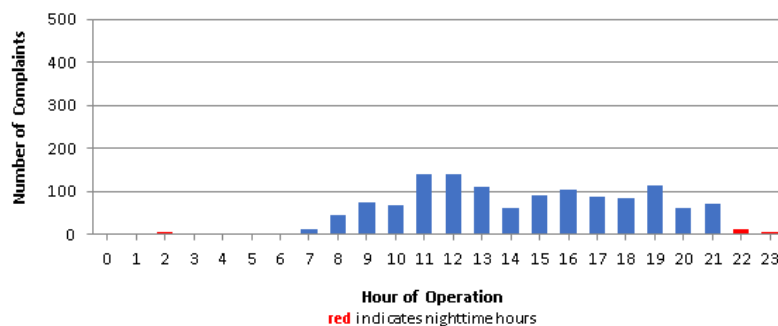
## Complaints by Concern



## Complaints by Zip Code

Zip Code	Complaints	Units
90242	3	1
90278	247	1
90712	2	2
90740	1	1
90746	1	1
90803	1	1
90805	16	3
90807	31	11
90808	4	4
90814	3	1
90815	6	2
91364	1	1
92603	1	1
92612	67	1
92615	6	1
92625	1	1
92626	206	1
92627	8	2
92629	2	1
92646	2	1
92647	474	2
92648	123	8
92649	31	4
92651	3	2
92656	1	1
92660	7	2
92661	11	2
92662	1	1
92676	1	1
92807	1	1
92869	30	1
Not Reported	4	2
<b>Grand Total</b>	<b>1,296</b>	<b>65</b>

## Complaints by Time of Operation





# long beach airport



## Long Beach Airport

4100 E. Donald Douglas Drive, Long Beach, CA 90808

[www.lgb.org](http://www.lgb.org) • [lgbapt@longbeach.gov](mailto:lgbapt@longbeach.gov)

Administration • (562) 570-2619