

MAC Report

October 2020



SUBMITTED BY THE MARINE BUREAU



TABLE OF CONTENTS

1. Marinas and Waterways
2. Beaches and Waterways
3. Marine Maintenance Work Order Graphs
4. Pump Out Inspection Report
5. Tide Table



MARINAS AND WATERWAYS

Accomplishments

- ❖ Staff has repaired many areas of damaged concrete (steps, flower beds, beach path stairs) throughout ABM marina as well as bluff park stairs leading downwards to the beach.
- ❖ Staff repaired broken pump out line at Parkers Pub Dock.
- ❖ Staff completed the process of assembling trees for the “Trees in the Bay” project.
- ❖ Staff has replaced the wooden doors with new hollow metal doors at D-3 and D-4 boat owner’s restrooms.



Projects in the works

- ❖ Staff is in the process of replacing all the damaged and missing signs throughout the Long Beach Shoreline Marina. Staff has already replaced all the “Gangway” and “No Visitor” signs. 90% completed.
- ❖ Staff is in the process of retrofitting the existing twelve (12) booster pumps from a wet system to a dry fire suppression system in the Long Beach Shoreline Marina. 50% completed.
- ❖ Staff is in the process of making improvements to the Alamitos Bay Marina office including: painting the interior of the building. 50% completed.
- ❖ Staff is in the process of inspecting and tightening all the loose fingers throughout the Long Beach Shoreline Marina. 40% completed.
- ❖ Staff is in the process of inspecting and replacing all the damaged gangway water supply lines throughout Long Beach Shoreline Marina, as needed. 45% completed.
- ❖ Staff is in the process of repairing the restroom plumbing throughout Long Beach Shoreline Marina. 35% completed.



MARINAS AND WATERWAYS

- ❖ Staff is in the process of repairing concrete fingers throughout Long Beach Shoreline Marina. 10% complete.
- ❖ Staff is in the process of repairing all damaged concrete behind Spinnaker Bay near the seawall. 10% complete.
- ❖ Staff is in the process of replacing all electrical components (breakers, receptacles, etc.) inside the pedestals located throughout Shoreline & Rainbow Harbor Marina's. 20% complete.
- ❖ Staff is in the process of striping the boatowner's parking area throughout Basins 1-3. It is 90% complete.
- ❖ Staff is in the process of replacing exterior doors at the Belmont Pool office. 50% complete.
- ❖ Staff is in the process of installing two (2) new power pedestals on long dock North. 50% complete.
- ❖ Staff is in the process of doing all bright work in Basin's 1,2 & 3 90% complete.
- ❖ Staff is in the process of changing all roller bearings for DTM's gangway's 25% complete.
- ❖ Staff is in the process of deploying and wiring trees for "Trees in the Bay" project 20% complete.
- ❖ Staff is in the process of building a new lifeguard shed 20% complete.



BEACHES AND WATERWAYS

Accomplishments

- ❖ Beach Maintenance staff removed over 78.3 tons of trash and debris from the beaches and inner bays.
- ❖ Beach Maintenance staff serviced 200 trash receptacles during the month of October.
- ❖ Beach Maintenance staff built up and maintained the berm on the East Peninsula beach between 62nd – 72nd place.
- ❖ Beach Maintenance staff swept the bike/pedestrian path.
- ❖ Beach Maintenance staff conducted weekly cleanups of several homeless encampments throughout the beach areas.
- ❖ Beach Maintenance staff raked and cleaned throughout the beach areas.
- ❖ Beach Maintenance staff opened the storm winter drains to prevent flooding along the beaches.
- ❖ Beach Maintenance staff placed decorative boulders at Shoreline Aquatic and Legacy Tree Park.
- ❖ Beach Maintenance staff repaired the irrigation at Colonnade and Treasure Island Park.
- ❖ Queensway Bay staff conducted a cleaning of all 60 basket filters in the Rainbow Lagoon; six days per week, twice per day. Staff replaces and cleans all 60 baskets once a month.
- ❖ Queensway Bay staff conducted daily removal of water borne debris and algae in the Rainbow Lagoon, Rainbow Harbor Marina and Long Beach Shoreline Marina using hand nets and a small skimmer boat.
- ❖ Queensway Bay staff installed a new air compressor for the aeration system.
- ❖ Queensway Bay staff coordinated the installation of the new main fountain connection.
- ❖ Queensway Bay staff removed trash from docks, three times per week.
- ❖ Queensway Bay staff conducted daily cleaning and maintenance of all trash skimmers on the docks, seven days per week.
- ❖ Queensway Bay staff conducted monthly inspections on all docks throughout Rainbow Harbor Marina.



BEACHES AND WATERWAYS

- ❖ Queensway Bay staff serviced all sewage pumps on the commercial docks.
- ❖ Queensway Bay staff conducted weekly encampment posting and cleanups.
- ❖ Queensway Bay staff completed and closed 100 work order request.
- ❖ Queensway Bay staff coordinated sidewalk repairs near the Residence Inn and along the Marina Green parking lot.
- ❖ Queensway Bay staff coordinated roof and interior office repairs at the Pier Point office.
- ❖ Queensway Bay staff installed the storm debris boom at the Rainbow Harbor entrance.
- ❖ Queensway Bay staff conducted daily graffiti removal of the entire Rainbow Harbor area, including the Queensway bridge bike path and the Pier Point parking lot.
- ❖ Queensway Bay staff completed and closed 28 "Go Long Beach Request" for the month of October.
- ❖ Queensway Bay staff conducted graffiti abatement at Queen Mary Event Park.
- ❖ Queensway Bay staff performed routine maintenance on the Wave and Dolphin Fountain.
- ❖ Queensway Bay staff conducted routine maintenance on the Wave Fountain filter pumps.
- ❖ Queensway Bay staff power washed the exterior of the Wave Fountain bi-weekly.

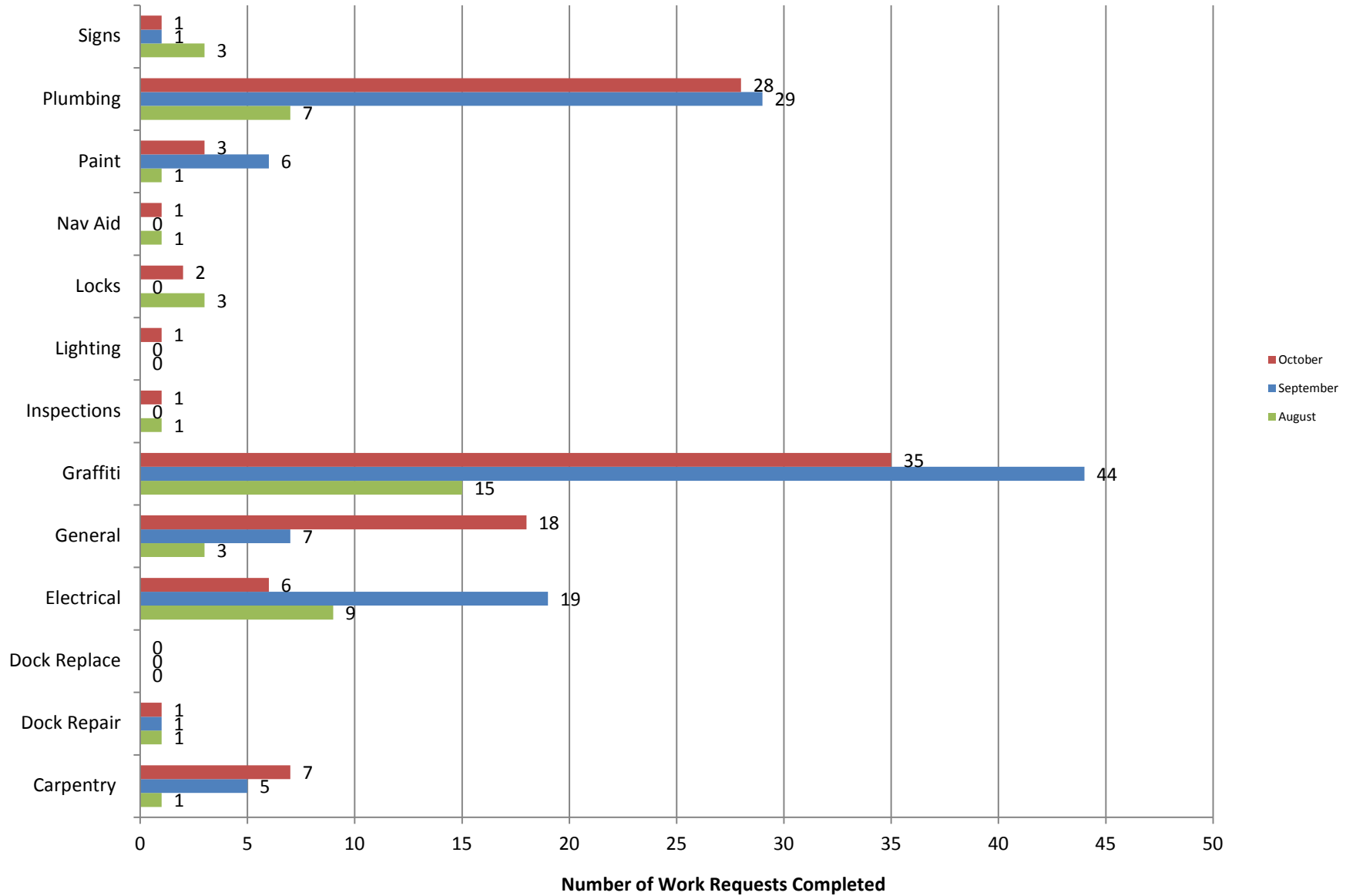
Projects in the works

- ❖ Beach Maintenance staff is continuing the process of rebuilding sections of the peninsula where erosion occurs.



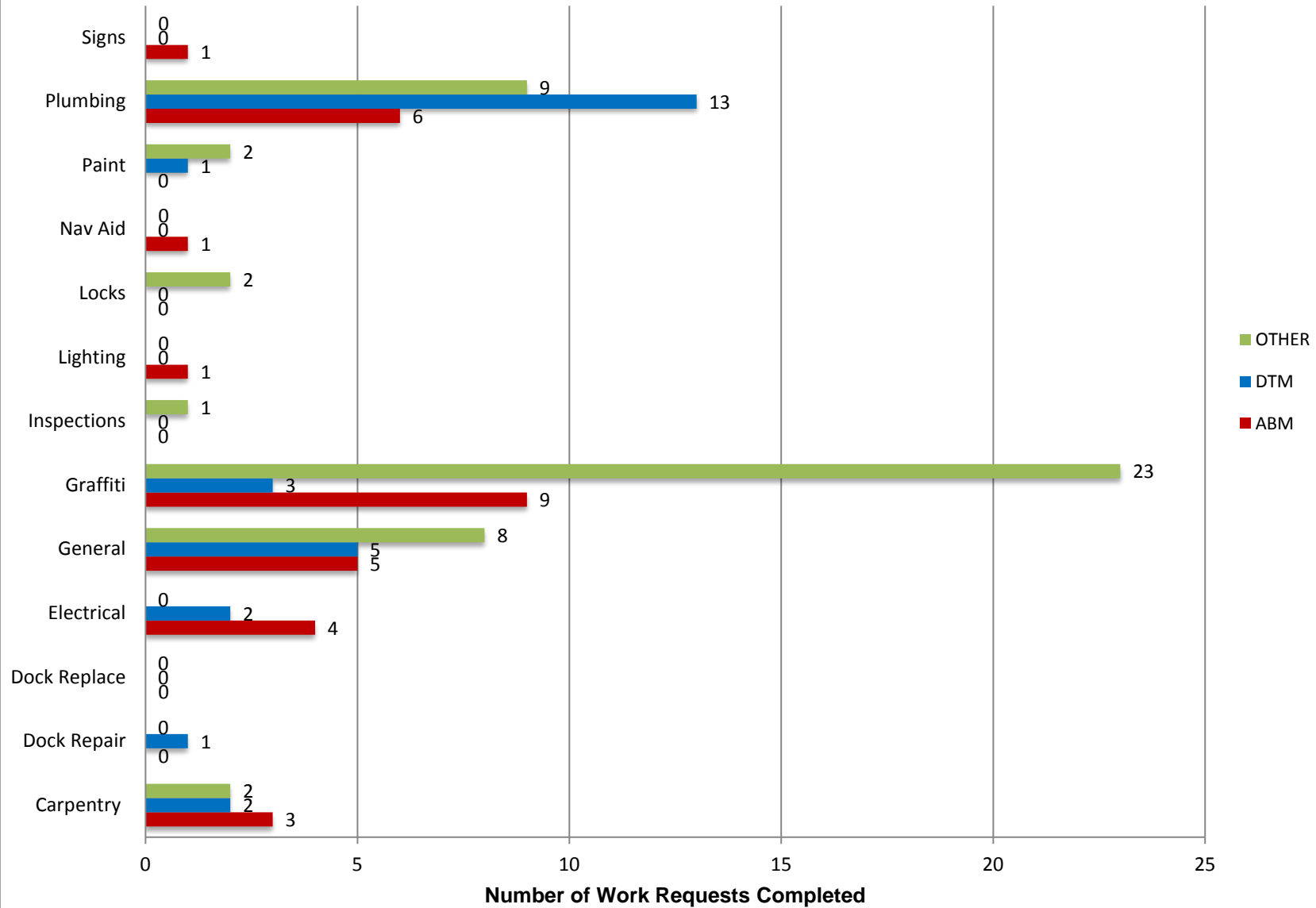
Marine Maintenance

Work Request Completed by Month



Marine Maintenance

Work Requests Completed by Location



PUMPOUT INSPECTION REPORT

Pump Out Location	Inspection Date				
	10/01/20	10/08/20	10/15/20	10/22/20	10/29/20
Gwy A, A	W	W	W	W	W
Gwy A, B	W	W	W	W	W
Parker's Public Dock, A	W	W	NW	NW	NW
Parker's Public Dock, B	W	W	NW	NW	NW
Parker's Public Dock, C	W	W	NW	NW	NW
Dock 9	W	W	W	W	W
Basin 6 South	W	W	W	W	W
Basin 6 North	W	W	W	W	W
Davie's Launch Ramp, A	W	W	W	W	W
Station 31, A	W	W	W	W	W
Station 31, B	W	W	W	W	W
Station 21	W	W	W	W	W
Basin 1, Gwy 2	W	W	W	W	W
Basin 1, Gwy 4	W	W	W	W	W
Basin 2, Gwy 8	W	W	W	W	W
Basin 2, Gwy 11	W	W	W	W	W
Basin 3, Gwy 16	W	W	W	W	W
Basin 3, Gwy 19	W	W	W	W	W
Basin 4, Gwy 28	W	W	W	W	W
Basin 4, Gwy 31	W	W	W	W	W
Basin 5, Gwy 33	W	W	W	W	W
Basin 5, Gwy 34	N/A	W	W	W	W

KEY
W = Working
NW = Not Working
N/A = Not Applicable

California, Los Angeles, Long Beach, Inner Harbor

November 2020

N 33° 46.3' / W 118° 12.6'

