



VOTING IN A TIME OF PANDEMIC

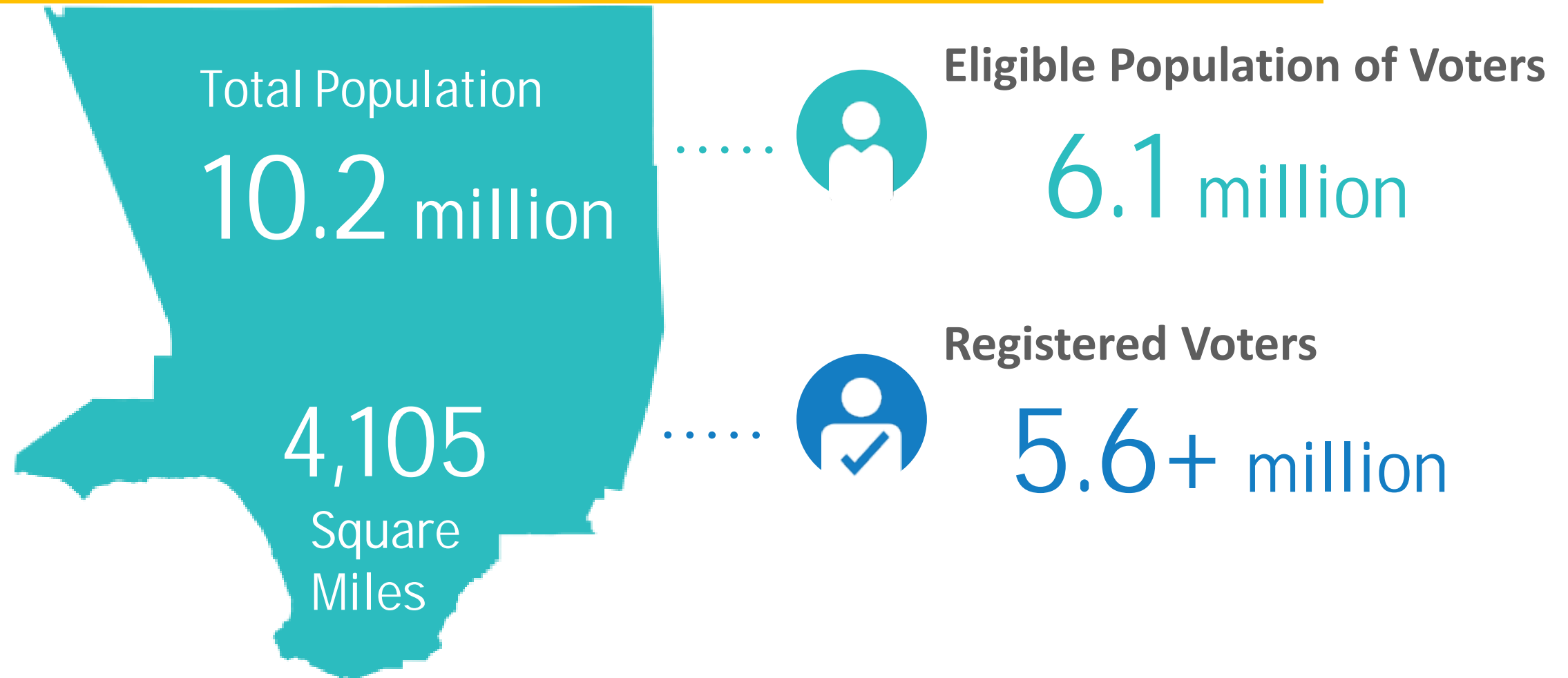
Jeff Klein

Manager of Civic Engagement, Community Relations & Legislation

October 22, 2020



LA County at a Glance

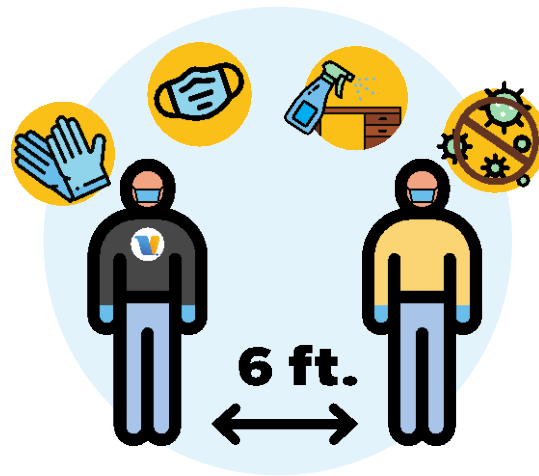


November General Election Snapshot



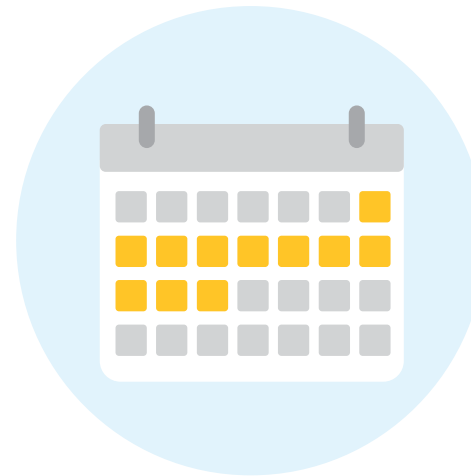
L.A. County currently has over **5.5 million** registered voters, all voters will be issued a Vote by Mail ballot.

Approximately **2.5 million** additional ballots.



Safe in-person **Vote Centers** that strictly follow State and County guidelines from public health officials.

Total of **758 Vote Centers** throughout LA County.



We are planning to have **10 days** of voting available prior to Election Day.

Combined with Election Day, creates an **11 day voting period**.

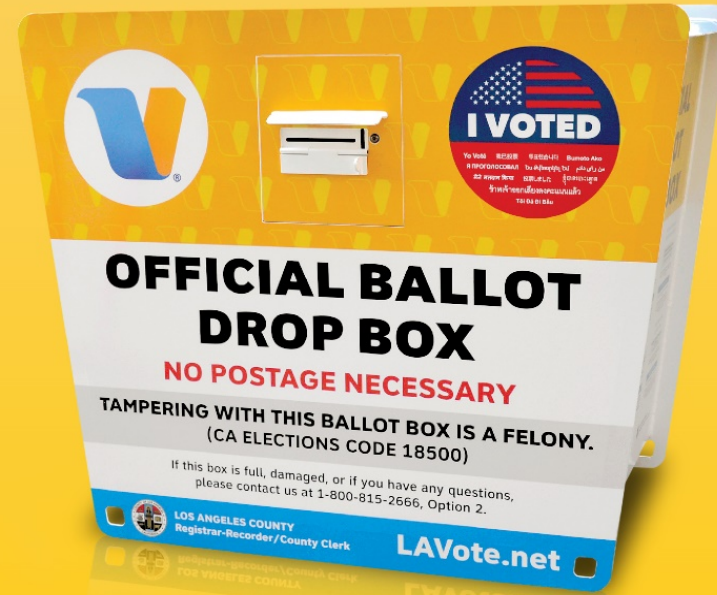


VBM Ballot Drop Box expansion.

*Established a total of **402 Drop Boxes** throughout LA County. Double the number from the Primary.*



Find a VBM
Drop Box at
www.LAVote.net



The L.A. County Registrar Recorder/County Clerk recommends returning a vote by mail (VBM) ballot to either a mailbox, official VBM Drop Box or at ballot box located at any vote center.

Before you submit your Vote by Mail ballot make sure:

- ☐ Place your voted ballot card(s) inside the Official Return Envelope
- ☐ Seal the Official Return Envelope
- ☐ Sign and date the back of the Official Return Envelope



How to Return your Vote by Mail Ballot in L.A. County

DROP BOXES

There will be hundreds of safe and secure drop boxes beginning October 5

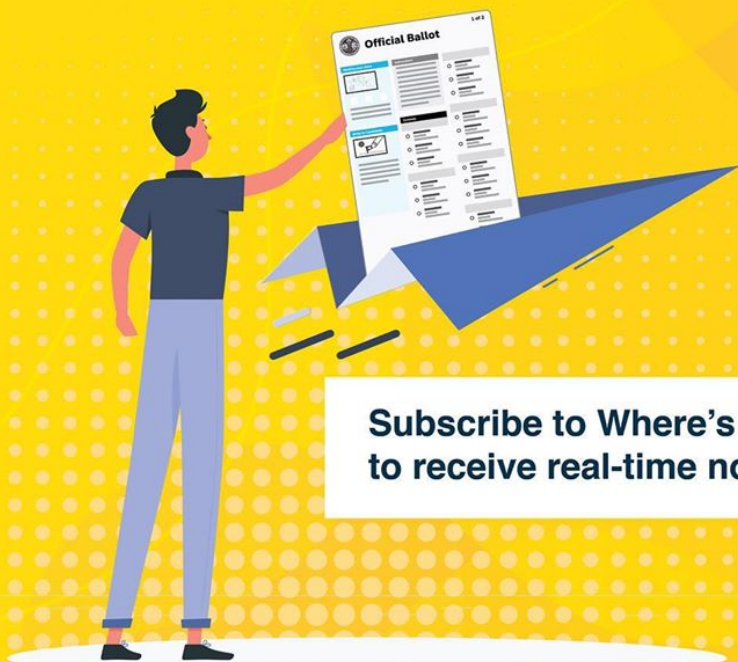
USPS RECOMMENDATION

Return your ballot early!

If your ballot is postmarked by Election Day and received within 17 days your ballot will be accepted



TRACK YOUR VOTE BY MAIL BALLOT



Subscribe to Where's My Ballot
to receive real-time notifications



Where's My Ballot?

A screenshot of the 'Where's My Ballot?' website interface displayed on a laptop screen. The website has a blue background with a white star and a white bear silhouette. The main heading is 'Where's My Ballot?'. Below the heading, there is a section titled 'Tracking your ballot - when it is mailed, received, and counted - has never been easier.' with a small icon of a ballot box. To the right, there is a 'GET STARTED' section with a note: 'Note: This system does not change or update your voter registration. Interact with ballottrax.net and vote.ca.gov'. Below this, there are input fields for 'FIRST NAME', 'LAST NAME', 'DATE OF BIRTH', and 'ZIP CODE'. At the bottom of this section is a button labeled 'REGISTER / LOG IN'. At the very bottom of the screen, there is a small copyright notice: '© 2021 by iVoting, Inc. All rights reserved. | Voter Pledge | Your Privacy & Security'.

california.ballottrax.net



LAVote.net

11-Day & 5-Day Voting Period

11-Day Locations: Over 100 – open 10/24

5-Day Locations: Over 650 – open 10/30

Total in-person vote centers: Over 750

- Strategically placed throughout LA County
- High-profile locations: Pantages Theater, Museum of Latin American Art, Dodger Stadium, STAPLES Center, The Forum, Four Seasons Hotel and others
- Hours:
 - 10AM –7PM daily through 11/2
 - 7AM –8 PM on Election Day

Also find any
Vote Center at
www.LAVote.net

County of Los Angeles
Registrar Recorder County Clerk
P.O. Box 30450
Los Angeles, CA 90030-0450

NONPROFIT ORG.
U.S. POSTAGE
PAID
COUNTY OF LOS
ANGELES REGISTRAR
RECORDER COUNTY
CLERK

**OFFICIAL
ELECTION MAIL**
Authorized by the U.S. Postal Service

USPS POSTAL ENDORSEMENTS
IMB BARCODE
VOTER FIRST AND LAST NAME
VOTER ADDRESS 1
VOTER ADDRESS 2
CITY STATE AND ZIP

Detach and take your Quick Check-in Code
with you to any Vote Center in L.A. County.

VOTER ID - ELECTION ID - BALLOT TYPE

Vote Centers Near Your Residence:
Hours: 10 AM - 7 PM, Election Day: 7 AM - 8 PM

October 24 - November 3
Vote Centers

The Village at Indian Hill
Atrium
1460 E Holt Ave #4
Pomona 91767-8418

October 30 - November 3
Vote Centers

Lincoln Avenue Community Church
Timmer Hall
1547 Lincoln Ave
Pomona 91767-8423

From the Heart Church Ministries of Pomo
Stationary West Wing
655 N Mills Ave
Pomona 91767-8423

From the Heart Church Ministries of Pomo
Stationary West Wing
655 N Mills Ave
Pomona 91767

**TAKE THIS QUICK
CHECK-IN CODE WITH
YOU TO ANY VOTE
CENTER IN L.A. COUNTY**

*Vote Centers are subject to change. Please visit LAVote.net for the most up-to-date list of Vote Centers in L.A. County.



Ballot Marking Device (BMD)



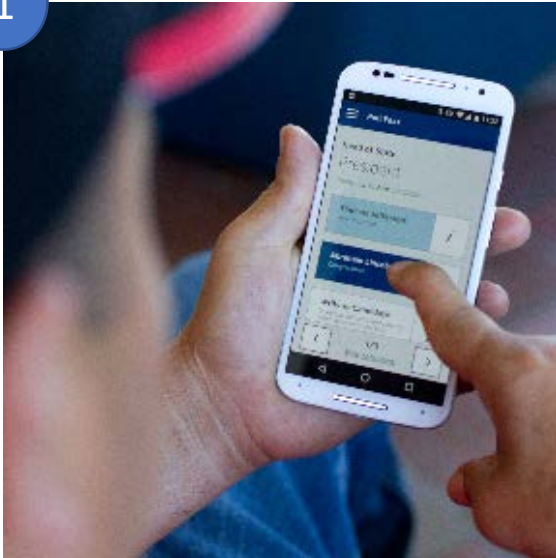
Key features:

- Paper ballot
- Fully secure – no internet or network connection
- Independent and private voting experience
- Fully accessible, attached device
- Attach audio headset, if desired
- Multilingual accessibility
- Integrated ballot box



Interactive Sample Ballot (ISB)

1



2



3



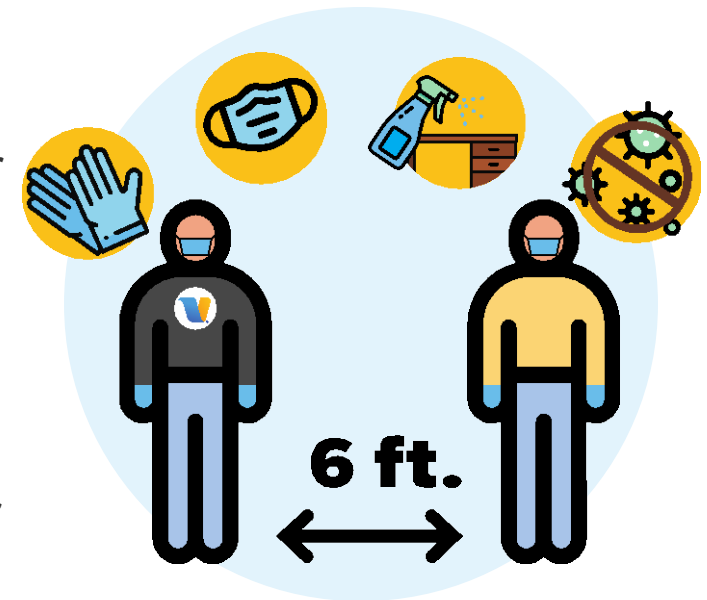
VOTER INFORMATION AND GUIDANCE RELATING TO COVID-19

All registered voters will be mailed a Vote by Mail ballot. **This is the safest method**, but in-person is available for voters who wish to utilize this method.

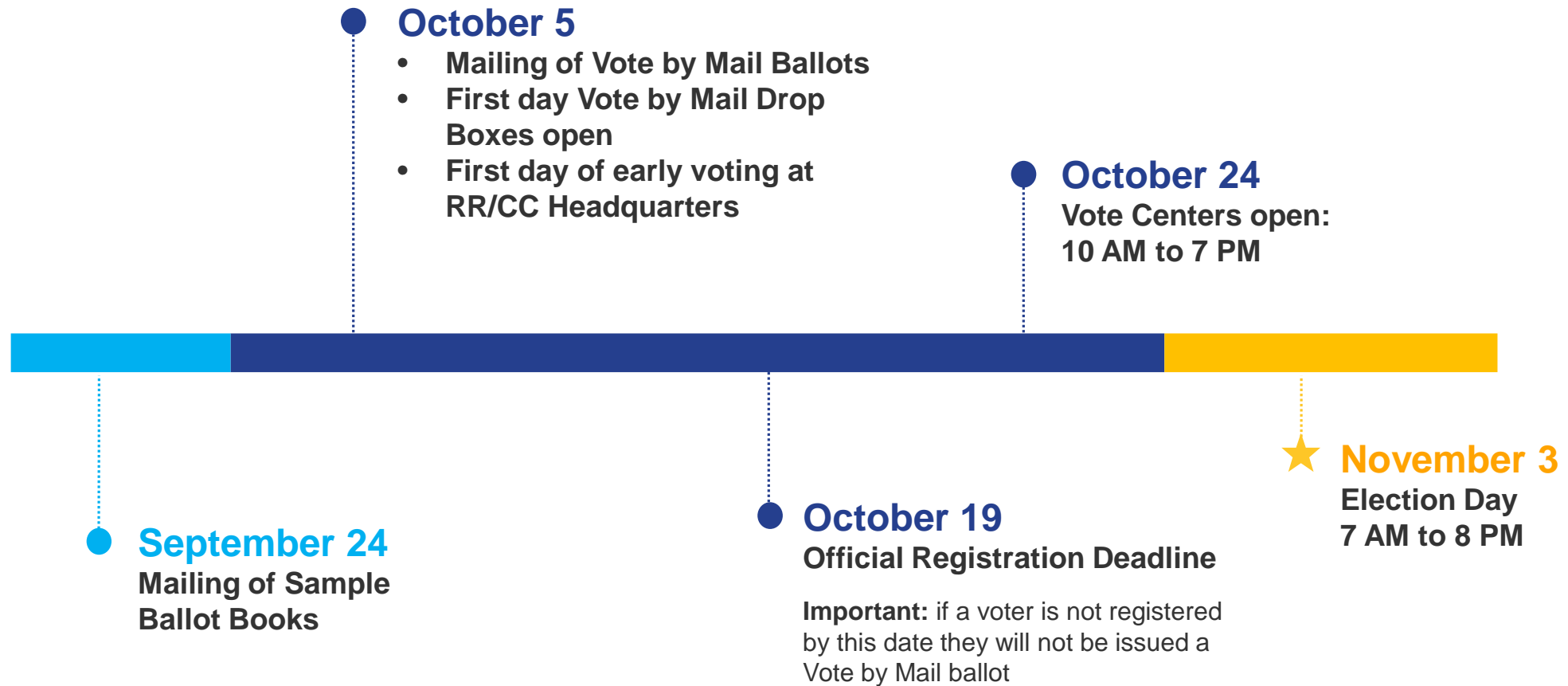
L.A. County will encourage voters to stay at home and use their mail-in ballot. Although, in this election we will offer in-person voting, and we will strictly follow the State and County's public health and safety guidelines to ensure we provide a safe voting environment.

COVID-19 Information for Voting In-Person:

- ☐ Voters should wear a clean face-covering when visiting the Vote Center
- ☐ Election Workers will be wearing protective gloves and masks
- ☐ Masks available and hand sanitizer at entry/exit
- ☐ Social distancing will be enforced at the check-in and voting process
- ☐ ePollbook and Ballot Marking Devices will be sanitized after every voter
- ☐ Gloves will be provided to voters upon request



Timeline



Stay Engaged

Social Media: [@lacountyrrcc](#)

- Follow, like and share

Website:

“Make a Plan”

www.LAVote.net

Email:

voterinfo@rrcc.lacounty.gov

