

MAC Report

September 2020



SUBMITTED BY THE MARINE BUREAU



TABLE OF CONTENTS

1. Marinas and Waterways
2. Beaches and Waterways
3. Marine Maintenance Work Order Graphs
4. Pump Out Inspection Report
5. Tide Table



MARINAS AND WATERWAYS

Accomplishments

- ✓ Staff replaced Rosie's Dog Park Sign.

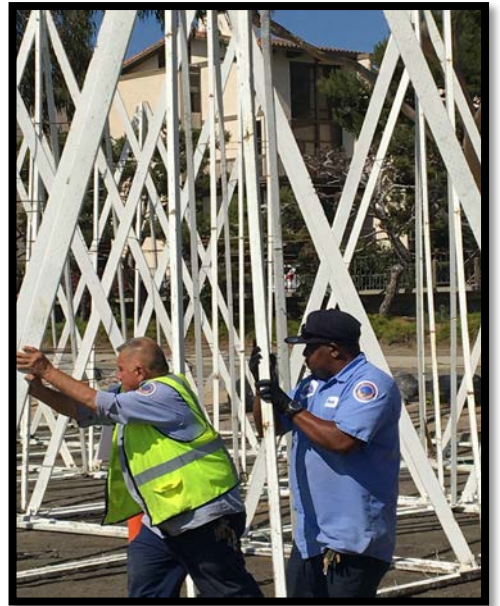
Projects in the works

- ❖ Staff is in the process of replacing all the damaged and missing signs throughout the Long Beach Shoreline Marina. Staff has already replaced all the "Gangway" and "No Visitor" signs. 90% completed.
- ❖ Staff is in the process of retrofitting the existing twelve (12) booster pumps from a wet system to a dry fire suppression system in the Long Beach Shoreline Marina. 50% completed.
- ❖ Staff is in the process of making improvements to the Alamitos Bay Marina office including: painting the interior of the building. 50% completed.
- ❖ Staff is in the process of inspecting and tightening all the loose fingers throughout the Long Beach Shoreline Marina. 40% completed.
- ❖ Staff is in the process of inspecting and replacing all the damaged gangway water supply lines throughout Long Beach Shoreline Marina, as needed. 45% completed.
- ❖ Staff is in the process of repairing the restroom plumbing throughout Long Beach Shoreline Marina. 35% completed.
- ❖ Staff is in the process of repairing concrete fingers throughout Long Beach Shoreline Marina. 10% complete.
- ❖ Staff is in the process of repairing all damaged concrete behind Spinnaker Bay near the seawall. 10% complete.
- ❖ Staff is in the process of replacing all electrical components (breakers, receptacles, etc.) inside the pedestals located throughout Shoreline & Rainbow Harbor Marina's. 20% complete.
- ❖ Staff is in the process of striping the boatowner's parking area throughout Basins 1-3. It is 90% complete.
- ❖ Staff is in the process of replacing exterior doors at the Belmont Pool office. 50% complete.
- ❖ Staff is in the process of installing two (2) new power pedestals on long dock North. 50% complete.
- ❖ Staff is in the process of doing all bright work in Basin's 1,2 & 3 90% complete.
- ❖ Staff is in the process of changing all roller bearings for DTM's gangway's 25% complete.



MARINAS AND WATERWAYS

- ❖ Staff is in the process of assembling trees for the “Trees in the Bay” project.



BEACHES AND WATERWAYS

Accomplishments

- ❖ Beach Maintenance staff removed over 89.49 tons of trash and debris from the beaches and inner bays.
- ❖ Beach Maintenance staff serviced 200 trash receptacles during the month of September.
- ❖ Beach Maintenance staff built up and maintained the berm on the East Peninsula beach between 62nd – 72nd place and at Junipero beach.
- ❖ Beach Maintenance staff swept the bike/pedestrian path.
- ❖ Beach Maintenance staff conducted weekly cleanups of several homeless encampments throughout the beach areas.
- ❖ Beach Maintenance staff raked and cleaned throughout the beach areas.
- ❖ Beach Maintenance staff assisted Facility Maintenance staff with concrete removal.
- ❖ Beach Maintenance staff repaired damaged cinderblock wall near 72nd Place Lifeguard headquarters.
- ❖ Beach Maintenance staff planted new plants in the Marina Drive medians and in the planters near the Aquarium.
- ❖ Beach Maintenance staff laid decomposed granite in the Granada lot medians.
- ❖ Queensway Bay staff conducted a cleaning of all 60 basket filters in the Rainbow Lagoon; six days per week, twice per day. Staff replaces and cleans all 60 baskets once a month.
- ❖ Queensway Bay staff conducted daily removal of water borne debris and algae in the Rainbow Lagoon, Rainbow Harbor Marina and Long Beach Shoreline Marina using hand nets and a small skimmer boat.
- ❖ Queensway Bay staff removed trash from docks, three times per week.
- ❖ Queensway Bay staff conducted daily cleaning and maintenance of all trash skimmers on the docks, seven days per week.
- ❖ Queensway Bay staff conducted monthly inspections on all docks throughout Rainbow Harbor Marina.
- ❖ Queensway Bay staff serviced all sewage pumps on the commercial docks.



BEACHES AND WATERWAYS

- ❖ Queensway Bay staff conducted weekly encampment posting and cleanups.
- ❖ Queensway Bay staff replaced four partition doors at Pier Point and Lighthouse public restroom.
- ❖ Queensway Bay staff assisted with cleaning of all trash enclosures in Shoreline Marina.
- ❖ Queensway Bay staff conducted daily graffiti removal of the entire Rainbow Harbor area, including the Queensway bridge bike path and the Pier Point parking lot.
- ❖ Queensway Bay staff completed and closed 36 "Go Long Beach Request" for the month of September.
- ❖ Queensway Bay staff conducted graffiti abatement at Queen Mary Event Park.
- ❖ Queensway Bay staff re-striped the parking lot at South Shore launch ramp.
- ❖ Queensway Bay staff performed routine maintenance on the Wave and Dolphin Fountain.
- ❖ Queensway Bay staff replaced the jet nozzles at the Wave Fountain.
- ❖ Queensway Bay staff conducted routine maintenance on the Wave Fountain filter pumps.
- ❖ Queensway Bay staff power washed the exterior of the Wave Fountain bi-weekly.

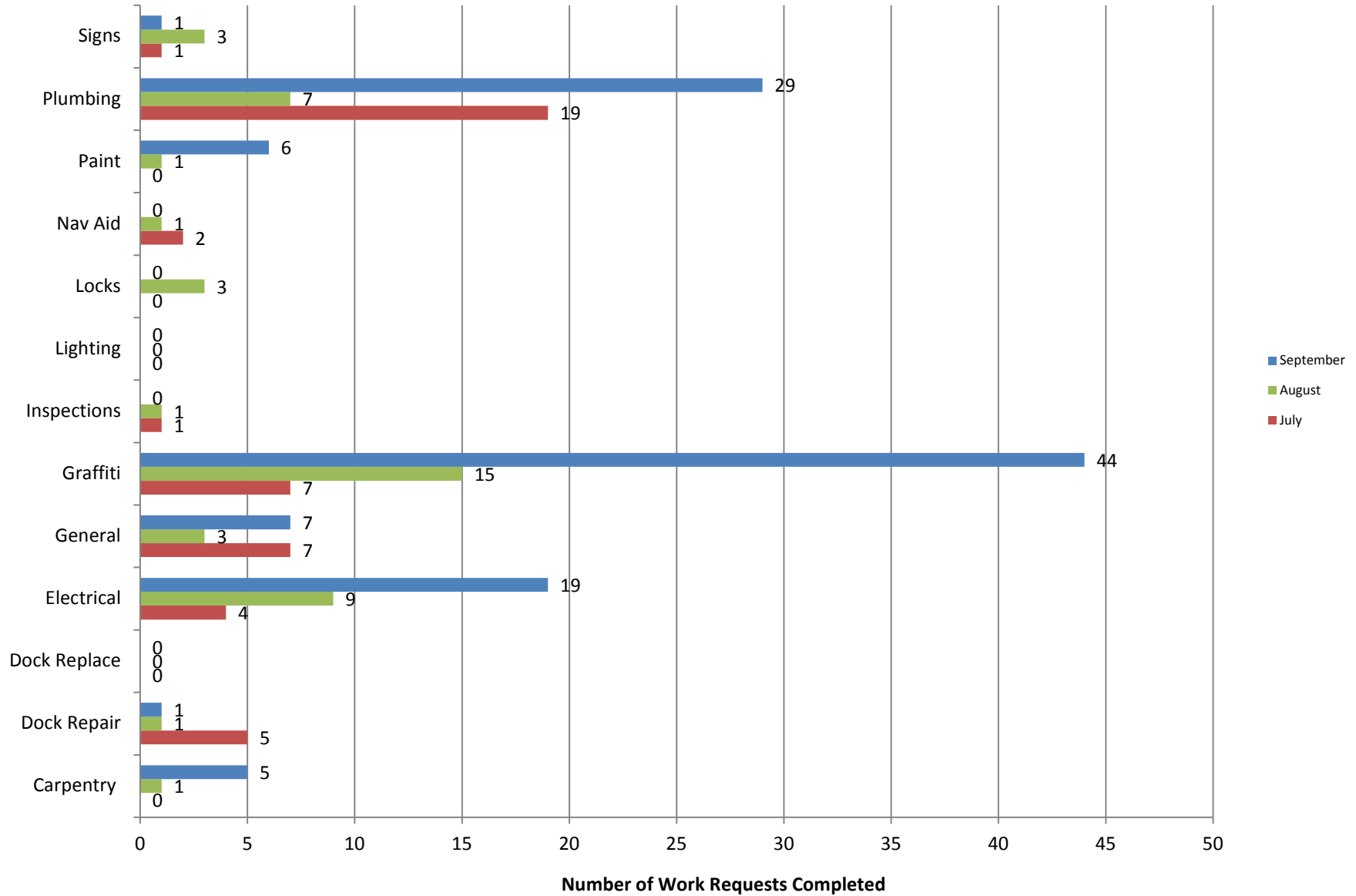
Projects in the works

- ❖ Beach Maintenance staff is continuing the process of rebuilding sections of the peninsula where erosion occurs.
- ❖ Queensway Bay staff is working to install a new air compressor for the aeration system.



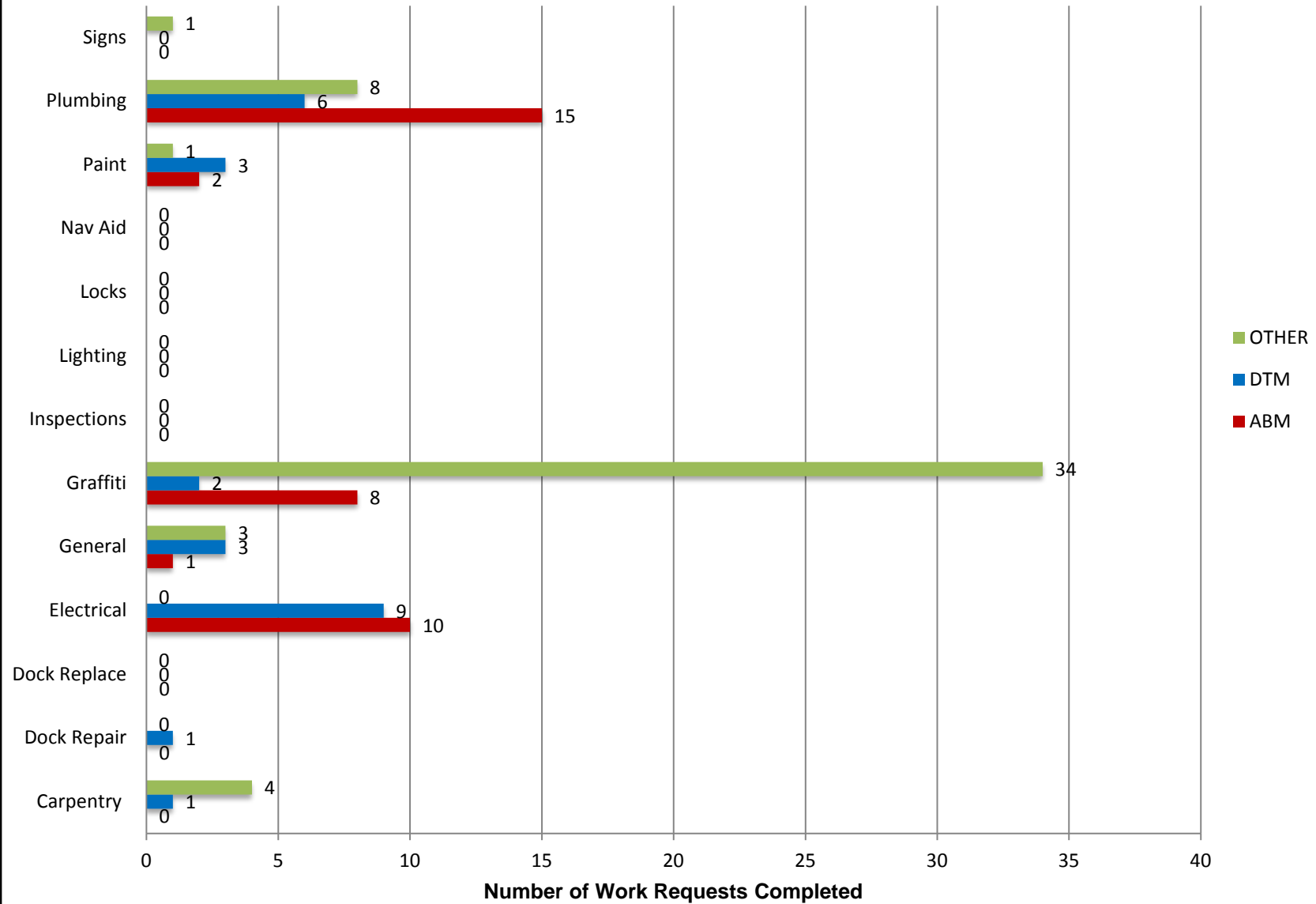
Marine Maintenance

Work Request Completed by Month



Marine Maintenance

Work Requests Completed by Location



PUMPOUT INSPECTION REPORT

Pump Out Location	Inspection Date			
	9/3/20	9/10/20	9/17/20	9/24/20
Gwy A, A	W	W	W	W
Gwy A, B	W	W	W	W
Parker's Public Dock, A	W	W	W	W
Parker's Public Dock, B	W	W	W	W
Parker's Public Dock, C	W	W	W	W
Dock 9	W	W	W	W
Basin 6 South	W	W	W	W
Davie's Launch Ramp, A	W	W	W	N/A
Station 31, A	W	W	W	W
Station 31, B	W	W	W	W
Station 21	W	W	W	W
Basin 1, Gwy 2	W	W	W	W
Basin 1, Gwy 4	W	W	W	W
Basin 2, Gwy 8	W	W	W	W
Basin 2, Gwy 11	W	W	W	W
Basin 3, Gwy 16	W	W	W	W
Basin 3, Gwy 19	W	W	W	W
Basin 4, Gwy 28	W	W	W	W
Basin 4, Gwy 31	W	W	W	W
Basin 5, Gwy 33	W	N/A	W	W
Basin 5, Gwy 34	W	N/A	W	W

KEY
W = Working
NW = Not Working
N/A = Not Applicable

California, Los Angeles, Long Beach, Inner Harbor

October 2020

N 33° 46.3' / W 118° 12.6'

