

MAC Report

July 2020



SUBMITTED BY THE MARINE BUREAU



TABLE OF CONTENTS

1. Marinas and Waterways
2. Beaches and Waterways
3. Marine Maintenance Work Order Graphs
4. Pump Out Inspection Report
5. Tide Table



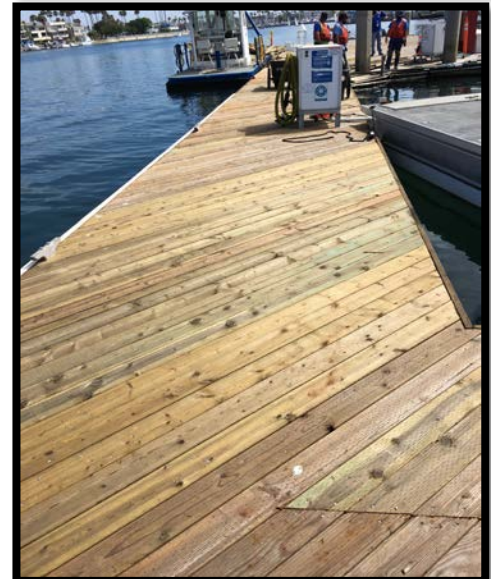
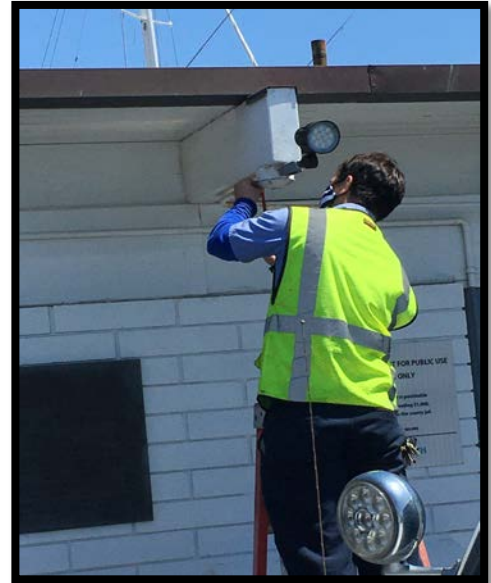
MARINAS AND WATERWAYS

Accomplishments

- ❖ Staff repaired Harbor Master dock
- ❖ Staff repaired and restriped handicap parking stalls at Rowing Center
- ❖ Staff installed new handicap parking signs at Rowing Center
- ❖ Staff installed LED exterior lighting at Marine Patrol facility
- ❖ Installed High Security keys in public restroom pipe chases
- ❖ Staff removed nine (9) backflow vaults throughout Basin's 1-3.

Projects in the works

- ❖ Staff is in the process of replacing all the damaged and missing signs throughout the Long Beach Shoreline Marina. Staff has already replaced all the "Gangway" and "No Visitor" signs. 90% completed.
- ❖ Staff is in the process of retrofitting the existing twelve (12) booster pumps from a wet system to a dry fire suppression system in the Long Beach Shoreline Marina. 50% completed.
- ❖ Staff is in the process of making improvements to the Alamitos Bay Marina office including: painting the interior of the building. 50% completed.
- ❖ Staff is in the process of inspecting and tightening all the loose fingers throughout the Long Beach Shoreline Marina. 40% completed.
- ❖ Staff is in the process of inspecting and replacing all the damaged gangway water supply lines throughout Long Beach Shoreline Marina, as needed. 45% completed.
- ❖ Staff is in the process of repairing the restroom plumbing throughout Long Beach Shoreline Marina. 35% completed.
- ❖ Staff is in the process of installing new LED lighting in the Marine Patrol building. 50% completed.
- ❖ Staff is in the process of repairing concrete fingers throughout Long Beach Shoreline Marina. 10% complete.
- ❖ Staff is in the process of repairing all damaged concrete behind Spinnaker Bay near the seawall.



MARINAS AND WATERWAYS

- ❖ Staff is in the process of replacing all electrical components (breakers, receptacles, etc.) inside the pedestals located throughout Shoreline & Rainbow Harbor Marina's. 15% complete.
- ❖ Staff is in the process of striping the boatowner's parking area throughout Basins 1-3. 35% complete.
- ❖ Staff is in the process of replacing exterior doors at the Belmont Pool office. 50% complete.
- ❖ Staff is in the process of installing two (2) new power pedestals on long dock North. 50% complete.
- ❖ Staff is in the process of doing all bright work in Basin's 1,2 & 3 50% complete.
- ❖ Staff is in the process of fabricating and installing new brow flap on ABM's fuel dock ramp. 50% complete
- ❖ Staff is in the process of changing all roller bearings for DTM's gangway's 10% complete.



BEACHES AND WATERWAYS

Accomplishments

- ❖ Beach Maintenance staff removed over 163.71 tons of trash and debris from the beaches and inner bays.
- ❖ Beach Maintenance staff serviced 200 trash receptacles during the month of July.
- ❖ Beach Maintenance staff built up and maintained the berm on the East Peninsula beach between 62nd – 72nd place and at Junipero beach.
- ❖ Beach Maintenance staff swept the bike/pedestrian path.
- ❖ Beach Maintenance staff conducted weekly cleanups of several homeless encampments throughout the beach areas.
- ❖ Beach Maintenance staff raked and cleaned throughout the beach areas.
- ❖ Beach Maintenance staff installed plants at Station 35.
- ❖ Beach Maintenance staff repaired damaged planter at Pier J.
- ❖ Queensway Bay staff conducted a cleaning of all 60 basket filters in the Rainbow Lagoon; six days per week, twice per day. Staff replaces and cleans all 60 baskets once a month.
- ❖ Queensway Bay staff conducted daily removal of water borne debris and algae in the Rainbow Lagoon, Rainbow Harbor Marina and Long Beach Shoreline Marina using hand nets and a small skimmer boat.
- ❖ Queensway Bay staff mowed and detailed the Rainbow Lagoon Island grass area.
- ❖ Queensway Bay staff coordinated the replacement of skimmer lids.
- ❖ Queensway Bay staff removed trash from docks, three times per week.
- ❖ Queensway Bay staff conducted daily cleaning and maintenance of all trash skimmers on the docks, seven days per week.
- ❖ Queensway Bay staff conducted monthly inspections on all docks throughout Rainbow Harbor Marina.
- ❖ Queensway Bay staff serviced all sewage pumps on the commercial docks.
- ❖ Queensway Bay staff conducted weekly encampment posting and cleanups.
- ❖ Queensway Bay staff replaced decking on Fishing Pier #5.

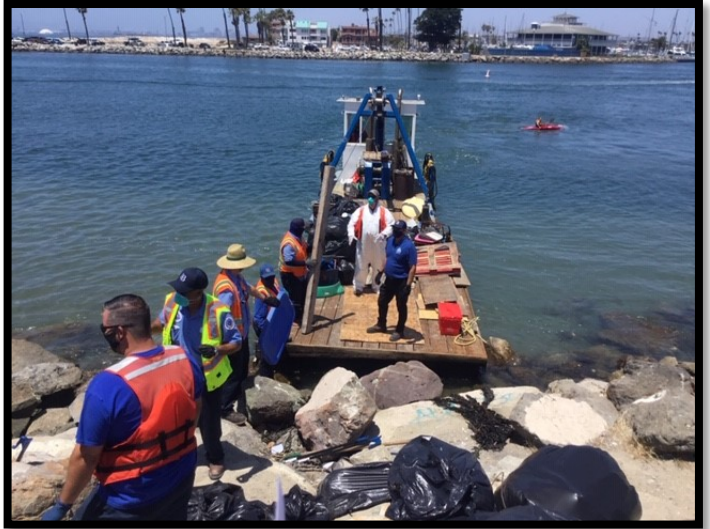


BEACHES AND WATERWAYS

- ❖ Queensway Bay staff coordinated cleaning and polishing of the statues at Navy Memorial and Lone Sailor site.
- ❖ Queensway Bay staff coordinated the removal and replacement of the light pole at Shoreline Aquatic Park.
- ❖ Queensway Bay staff removed commercial fender at Pine Ave Pier.
- ❖ Queensway Bay staff conducted daily graffiti removal of the entire Rainbow Harbor area, including the Queensway bridge bike path and the Pier Point parking lot.
- ❖ Queensway Bay staff completed and closed 36 “Go Long Beach Request” for the month of July.
- ❖ Queensway Bay staff repainted the exterior dome of the fountain.
- ❖ Queensway Bay staff coordinated repairs for the Dolphin Fountain water pump and motor.
- ❖ Queensway Bay staff performed routine maintenance on the Wave and Dolphin Fountain.
- ❖ Queensway Bay staff conducted routine maintenance on the Wave Fountain filter pumps.
- ❖ Queensway Bay staff power washed the exterior of the Wave Fountain bi-weekly.

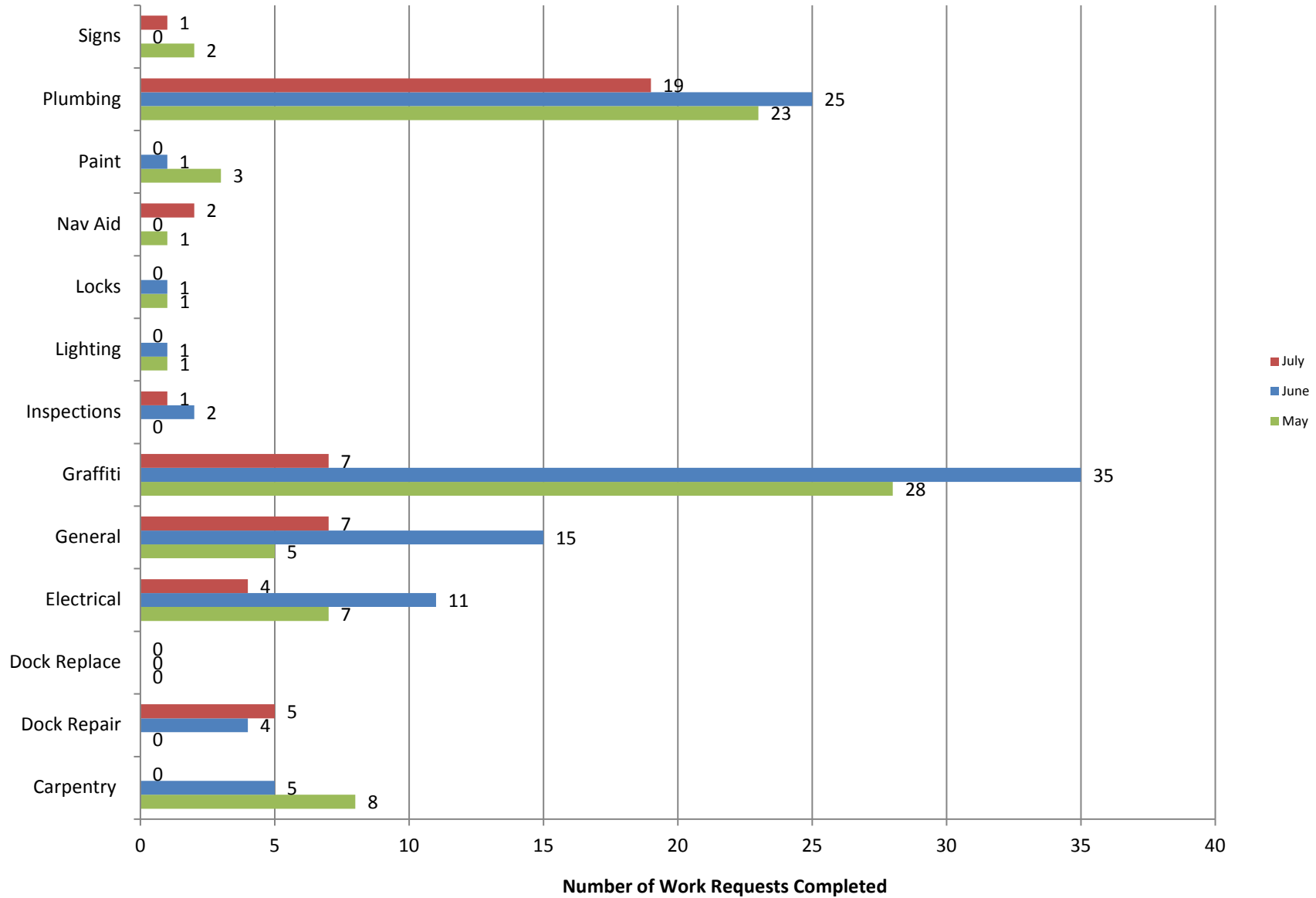
Projects in the works

- ❖ Beach Maintenance staff is continuing the process of rebuilding sections of the peninsula where erosion occurs.



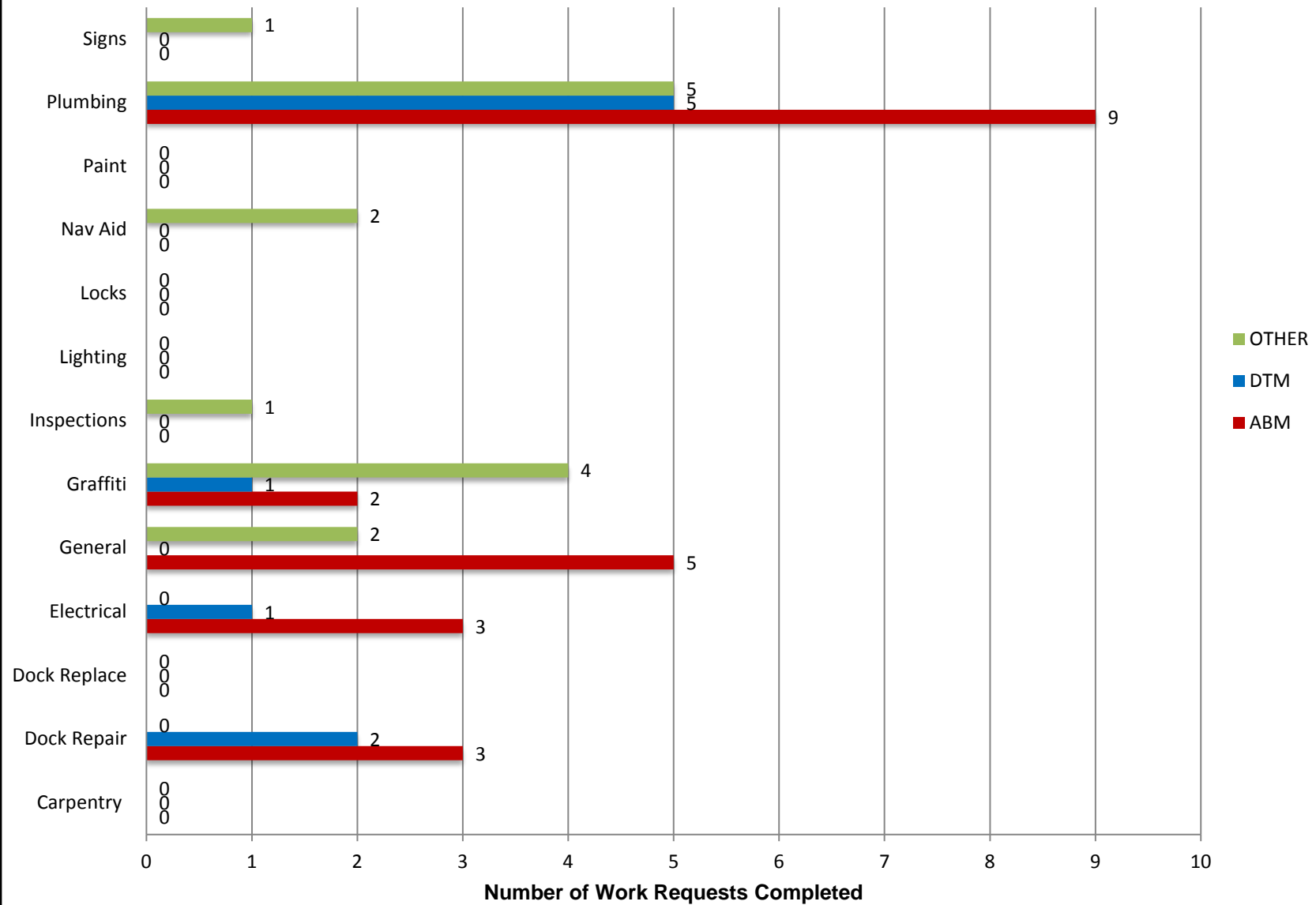
Marine Maintenance

Work Request Completed by Month



Marine Maintenance

Work Requests Completed by Location



PUMPOUT INSPECTION REPORT

Pump Out Location	Inspection Date				
	7/2/20	7/9/20	7/16/20	7/23/20	7/30/20
Gwy A, A	W	W	W	W	W
Gwy A, B	W	W	W	W	W
Parker's Public Dock, A	W	W	W	W	W
Parker's Public Dock, B	W	W	W	W	W
Parker's Public Dock, C	W	W	W	W	W
Dock 9	W	W	W	W	W
Basin 6 South	W	W	W	W	W
Basin 6 North	W	W	W	W	W
Davie's Launch Ramp, A	W	W	W	W	W
Station 31, A	W	W	W	W	W
Station 31, B	W	W	W	W	W
Station 21	W	W	W	W	W
Basin 1, Gwy 2	W	W	W	W	W
Basin 1, Gwy 4	W	W	W	W	W
Basin 2, Gwy 8	W	W	W	W	W
Basin 2, Gwy 11	W	W	W	W	W
Basin 3, Gwy 16	W	W	W	W	W
Basin 3, Gwy 19	W	W	W	W	W
Basin 4, Gwy 28	W	W	W	W	W
Basin 4, Gwy 31	W	W	W	W	W
Basin 5, Gwy 33	W	W	W	W	W
Basin 5, Gwy 34	W	W	W	W	W

KEY
W = Working
NW = Not Working
N/A = Not Applicable

California, Los Angeles, Long Beach, Inner Harbor

August 2020

N 33° 46.3' / W 118° 12.6'

