

MAC Report

January 2020



SUBMITTED BY THE MARINE BUREAU



TABLE OF CONTENTS

1. Marinas and Waterways
2. Beaches and Waterways
3. Marine Maintenance Work Order Graphs
4. Pump Out Inspection Report
5. Tide Table



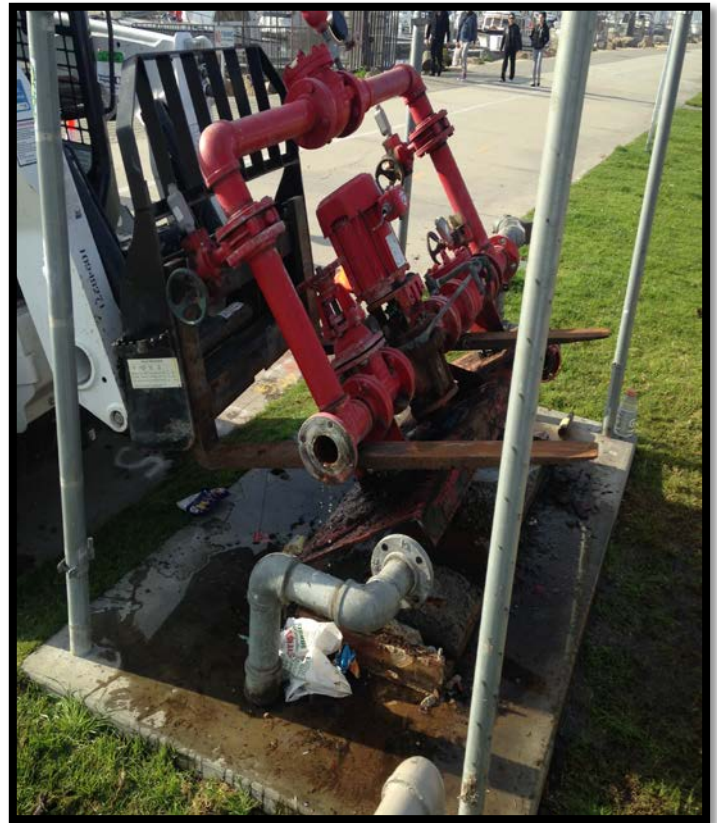
MARINAS AND WATERWAYS

Accomplishments

- ❖ Staff replaced five (5) signs around the Belmont Pool.
- ❖ Staff installed new interior doors at the Alamitos Bay Marina office.
- ❖ Staff replaced the green navigational light on the 2nd Street bridge. (North side)
- ❖ Staff coordinated the fence installation on Boat House Lane.

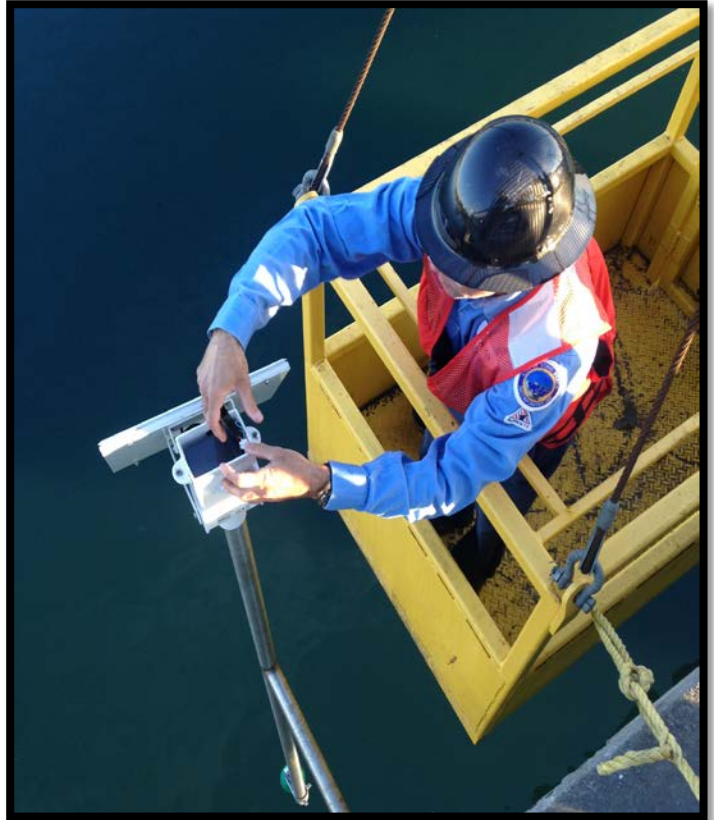
Projects in the works

- ❖ Staff is in the process of replacing all the damaged and missing signs throughout the Long Beach Shoreline Marina. Staff has already replaced all the "Gangway" and "No Visitor" signs. 90% completed.
- ❖ Staff is in the process of retrofitting the existing twelve (12) booster pumps from a wet system to a dry fire suppression system in the Long Beach Shoreline Marina.
- ❖ Staff is in the process of making improvements to the Alamitos Bay Marina office including: painting the interior of the building. 50% completed.
Staff is in the process of inspecting and tightening all the loose fingers throughout the Long Beach Shoreline Marina. 40% completed.
- ❖ Staff is in the process of inspecting and replacing all the damaged gangway water supply lines throughout Long Beach Shoreline Marina, as needed. 45% completed.
- ❖ Staff is in the process of repairing the restroom plumbing throughout Long Beach Shoreline Marina. 35% completed.
- ❖ Staff is in the process of installing new LED lighting in the Marine Patrol building. 50% completed.
- ❖ Staff is in the process of repairing concrete fingers throughout Long Beach Shoreline Marina. 10% complete.
- ❖ Staff is in the process of repairing all the damaged concrete behind Spinnaker Bay near the seawall.
- ❖ Staff is in the process of replacing all electrical components (breakers, receptacles, etc.) inside the pedestals located throughout Shoreline & Rainbow Harbor Marina's. 15% complete.



MARINAS AND WATERWAYS

- ❖ Staff is in the process of striping the boatowner's parking area in Basins 1-3. 35% complete.
- ❖ Staff is in the process of replacing exterior doors at the Belmont Pool office.
- ❖ Staff is in the process of replacing the boat owner's restroom doors 6-South.
- ❖ Staff is in the process of replacing the fencing at boat owner's restroom D-7.
- ❖ Staff is in the process of installing six (6) new power pedestals at Basin 8.
- ❖ Staff is in the process of installing two (2) new power pedestals on long dock North. 50% complete.
- ❖ Staff is in the process of removing, disassembling, and storing all the Christmas tree platforms for the trees in the bay. 25% complete.



BEACHES AND WATERWAYS

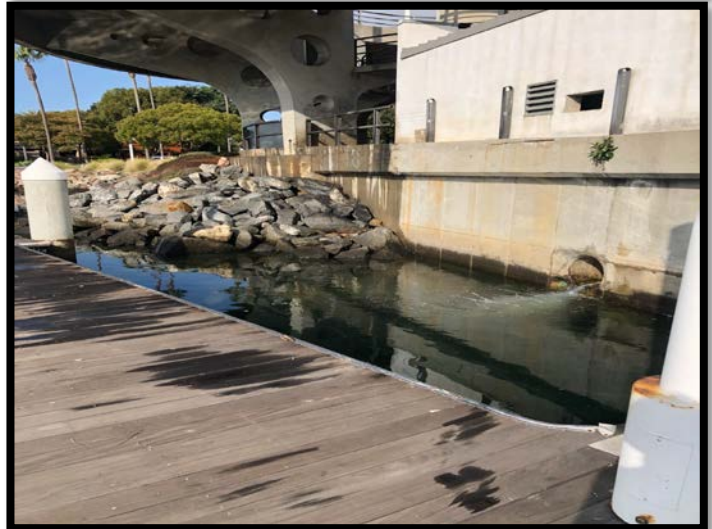
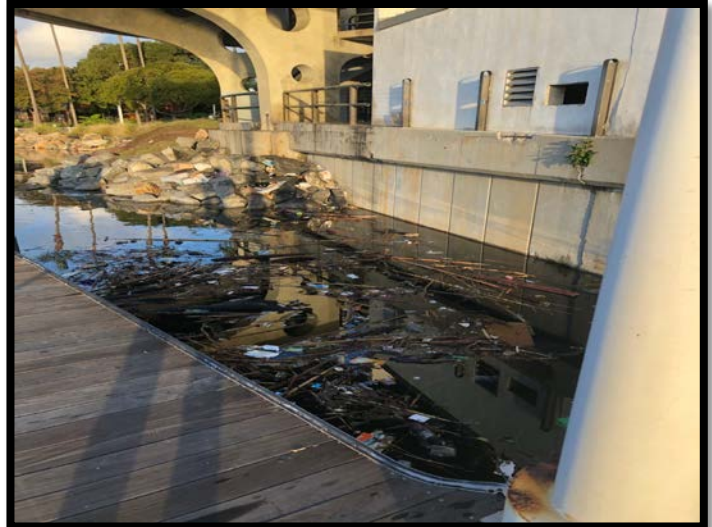
Accomplishments

- ❖ Beach Maintenance staff removed over 63 tons of trash and debris from the beaches and inner bays.
- ❖ Beach Maintenance staff serviced over 100 trash receptacles during the month of January.
- ❖ Beach Maintenance staff built up and maintained the berm on the East Peninsula beach between 62nd – 72nd place, depositing over 2,500 tons of sand for the month of January.
- ❖ Beach Maintenance staff swept the bike/pedestrian path.
- ❖ Beach Maintenance staff conducted weekly cleanups of several homeless encampments throughout the beach areas.
- ❖ Beach Maintenance staff raked and cleaned areas throughout the beach daily.
- ❖ Beach Maintenance staff mobilized the dredge pilot test by assisting with fusing the pipe, prepping work areas and discharge areas, operating the dredge pump, excavators and other equipment for the Peninsula dredge pilot test project.
- ❖ Beach Maintenance staff replaced irrigation clock at South Shore and Basin 3.
- ❖ Beach Maintenance staff planted new plants in the Rainbow Harbor Esplanade and along Queensway Pier J planters.
- ❖ Queensway Bay staff conducted a cleaning of all 60 basket filters in the Rainbow Lagoon; six days per week, twice per day. Staff replaces and cleans all 60 baskets once a month.
- ❖ Queensway Bay staff conducted daily removal of water borne debris and algae in the Rainbow Lagoon, Rainbow Harbor Marina and Long Beach Shoreline Marina using hand nets and a small skimmer boat.
- ❖ Queensway Bay staff mowed and detailed the Rainbow Lagoon Island grass area.
- ❖ Queensway Bay staff replaced and installed new plumbing for the sump pumps in Circulation Vault A and B.
- ❖ Queensway Bay staff removed trash from all the docks, three times per week.



BEACHES AND WATERWAYS

- ❖ Queensway Bay staff conducted daily cleaning and maintenance of all trash skimmers on the docks, seven days per week.
- ❖ Queensway Bay staff conducted daily removal of water borne debris in both marinas by use of hand nets.
- ❖ Queensway Bay staff serviced and conducted daily cleaning of the public elevator.
- ❖ Queensway Bay staff replaced the partition door in the Lighthouse women's restroom.
- ❖ Queensway Bay staff conducted weekly encampment cleanups.
- ❖ Queensway Bay staff worked to fill and barricade void in rip rap at Shoreline Park.
- ❖ Queensway Bay staff removed trash & debris from the water utility area.
- ❖ Queensway Bay staff installed guards on the palm trees at the Shoreline Yacht Club.
- ❖ Queensway Bay staff installed a security lock on the Pier Point parking lot gate.
- ❖ Queensway Bay staff conducted daily graffiti removal of the entire Rainbow Harbor area, including the Queensway bridge bike path and the Pier Point parking lot.
- ❖ Queensway Bay staff completed and closed 32 "Go Long Beach Request for graffiti removal in the month of January.
- ❖ Queensway Bay staff painted 9 trash cans in Rainbow Harbor Marina.
- ❖ Queensway Bay staff painted 12 informative kiosk signs and replaced the protective glass.
- ❖ Queensway Bay staff cleaned and painted all stalls in the Rainbow Harbor restroom.
- ❖ Queensway Bay staff performed routine maintenance on the Wave and Dolphin Fountain 2-3 times per week.
- ❖ Queensway Bay staff conducted maintenance on the Wave Fountain filter pumps.
- ❖ Queensway Bay staff power washed the exterior of the Wave Fountain bi-weekly.
- ❖ Queensway Bay staff inspected and repaired the Wave Fountain.



BEACHES AND WATERWAYS

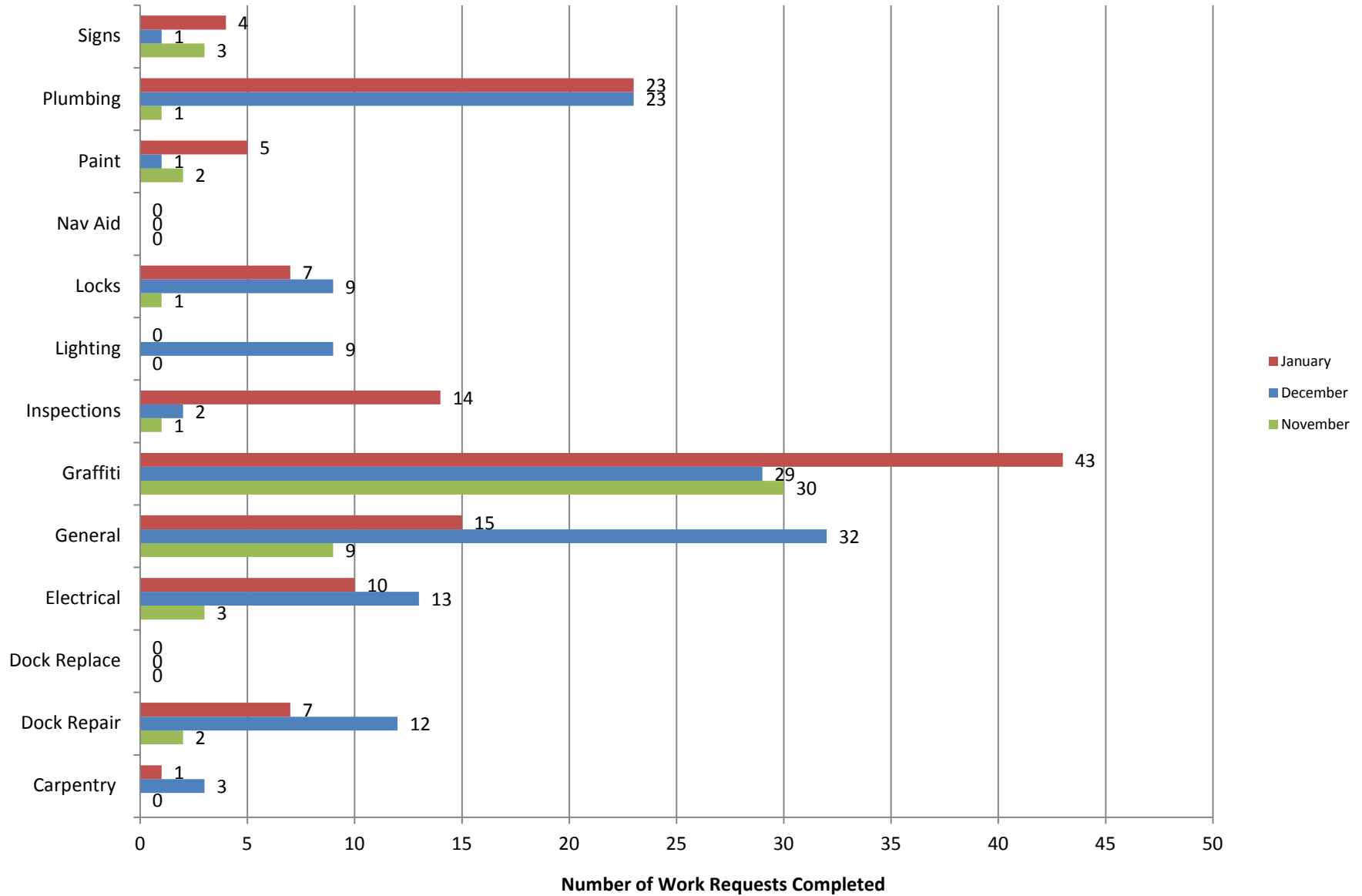
Projects in the works

- ❖ Beach Maintenance staff is continuing the process of rebuilding sections of the peninsula where erosion occurs.



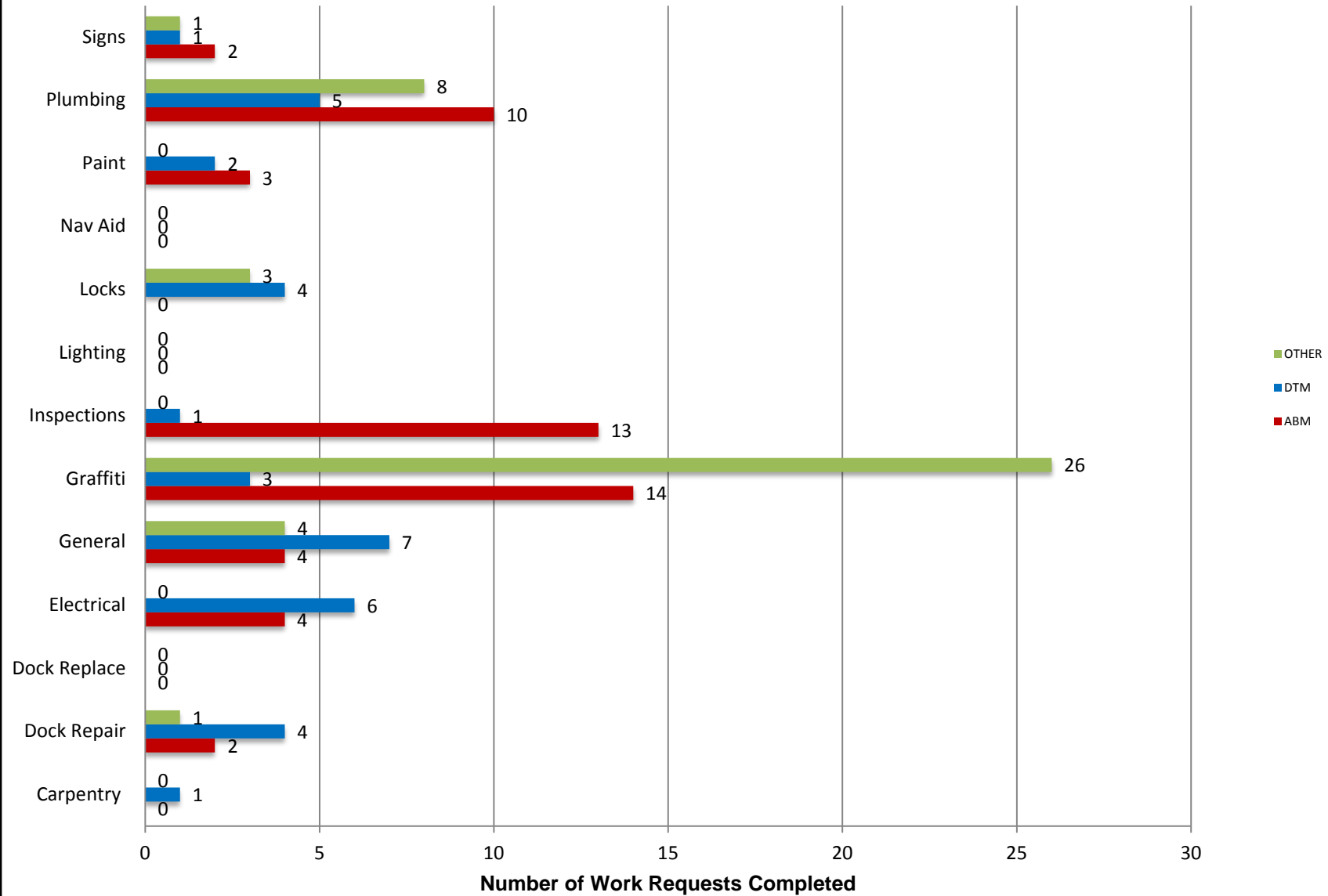
Marine Maintenance

Work Request Completed by Month



Marine Maintenance

Work Requests Completed by Location



PUMPOUT INSPECTION REPORT

Pump Out Location	Inspection Date			
	1/3/20	1/16/20	1/23/20	1/30/20
Gwy A, A	W	NW	W	W
Gwy A, B	NW	NW	NW	NW
Parker's Public Dock, A	W	W	W	W
Parker's Public Dock, B	W	W	W	W
Parker's Public Dock, C	W	W	W	W
Dock 9	W	W	W	W
Basin 6 South	W	W	W	W
Davie's Launch Ramp, A	W	W	W	W
Station 31, A	W	W	W	W
Station 31, B	W	W	W	W
Station 21	W	W	W	W
Basin 1, Gwy 2	W	W	W	W
Basin 1, Gwy 4	W	W	W	W
Basin 2, Gwy 8	W	W	W	W
Basin 2, Gwy 11	W	W	W	W
Basin 3, Gwy 16	W	W	W	W
Basin 3, Gwy 19	W	W	W	W
Basin 4, Gwy 28	W	W	W	W
Basin 4, Gwy 31	W	W	W	W
Basin 5, Gwy 33	W	N/A	W	W
Basin 5, Gwy 34	W	W	W	W

KEY
W = Working
NW = Not Working
N/A = Not Applicable

California, Los Angeles, Long Beach, Inner Harbor

February 2020

N 33° 46.3' / W 118° 12.6'

